



San Diego Community College District

San Diego City College Fact Book 2008



November 2008

Prepared by:
Office of Institutional Research and Planning

City College Fact Book 2008: Table of Contents

Fact Book Overview.....1

Highlights.....2

Section I: Headcount and Student Characteristics.....5

City

- Overall.....6
- Gender.....7
- Ethnicity.....8
- Age.....9
- Enrollment Status.....10
- Education Objective.....11
- Primary Language.....13
- Prior Education Level.....14
- Residence by Service Area.....15
- Units Attempted.....16
- First Generation.....17
- Income Level.....18
- DSPS.....19
- EOPS.....20

ECC

- Overall ECC.....21
- Gender ECC.....22
- Ethnicity ECC.....23
- Age ECC.....24
- Enrollment Status ECC.....25
- Education Goal ECC.....26
- Primary Language ECC.....28
- Prior Education Level ECC.....29
- Residence by Service Area ECC.....30
- Units Attempted ECC.....31

- First Generation ECC.....32
- Income Level ECC.....33
- DSPS ECC.....34
- EOPS ECC.....35

Section II. Fall to Spring Term Persistence Rates.....36

- Overall.....37
- By Gender.....38
- By Ethnicity.....39
- By Age.....41

Section III. Student Outcomes.....43

- Annual Success Rates
 - Overall.....44
 - By Gender.....45
 - By Ethnicity.....46
 - By Age.....47
- Annual Retention Rates
 - Overall.....48
 - By Gender.....49
 - By Ethnicity.....50
 - By Age.....51
- Annual GPA
 - Overall.....52
 - By Gender.....53
 - By Ethnicity54
 - By Age.....55
- Annual Awards Conferred
 - Overall.....56
 - By Gender.....57
 - By Ethnicity.....60
 - By Age.....64

City College Fact Book 2008: Table of Contents

- Annual Transfer
 - Overall.....68
 - By Gender.....69
 - By Ethnicity.....70
 - By Age.....71
 - UC/CSU.....72
 - Private vs. Public.....73
 - In-state vs. Out of State.....74

Section IV. Productivity and Efficiency.....75

- Annual FTES.....76
- Fall Enrollments: Online and On Campus77
- Fill Rates.....78

Section V. Human Resources.....80

- Fall 2007 Employees by Gender and Ethnicity.....81

City College Fact Book 2008: Overview

This Fact Book is a publication of the Office of Institutional Research and Planning for the San Diego Community College District. It is designed to serve the information needs of the college with a primary focus on student enrollment, demographics and outcomes.

The Fact Book is a rich source of collegewide trend information that may be used for planning an decision making. The book contains the following five sections:

- 1) Headcount and Student Characteristics. Provides information on student demographic characteristics (e.g., age, ethnicity and educational objective) over five years.
- 2) Term Persistence Rates. Provides information about students who complete a fall term and enroll in the subsequent spring term. The information is also broken down by demographic characteristics of interest.
- 3) Student Outcomes. Provides information on students' successful course completion rates, retention rates, GPA, awards conferred and transfer volume. All of the information is provided in summary form as well as broken down by demographic characteristics of interest.
- 4) Productivity and Efficiency. Provides information on annual FTES, enrollment and fill rates.
- 5) Human Resources. Provides information on the number of employees and is broken down by ethnicity and gender by employee classification.

Each of the sections contains the following benchmarks: 1) The percentage change over the five year period being reported, 2) The collegewide average and 3) The districtwide (includes Continuing Education) or all colleges in the district averages (excludes Continuing Education).

Throughout this Fact Book, the Educational Cultural Complex (ECC) data are included with City College, except for Headcount and Student Characteristics.

City College Fact Book 2008: Highlights

Headcount and Student Characteristics for City College

- Unduplicated student headcount for City College showed a 14% increase between Fall 03 and Fall 07.
- The ethnic groups that comprised the highest headcount between Fall 2003 and Fall 2007 were White students (32%), Latino students (29%) and African American students (13%).
- Students who were between ages 18-24, on average, constituted exactly half of the City student population.
- Almost half of the City student population (48%) selected transfer with or without an AA degree as their educational objective.
- From Fall 2003 to Fall 2007, on average, 30% of the students reported being first generation college students.

Headcount and Student Characteristics for ECC

- Unduplicated student headcount for ECC showed a 7% decrease between Fall 03 and Fall 07.
- On average, the female student headcount (71%) was higher than their male counterpart (29%), which has remained consistent from Fall 2003 to Fall 2007.
- The ethnic groups that comprised the highest headcount between Fall 2003 and Fall 2007 were Latino students (36%), African American students (28%) and White students (14%).
- Almost half of the ECC student population (44%) selected transfer with or without an AA degree as their educational objective

Term Persistence Rates

- The average term persistence rate for first-time City College students was 57% between Fall 2003 and Fall 2007 cohorts.
- On average, persistence rates of female students (60%) were higher than their male student counterpart (54%) between Fall 2003 and Fall 2007 cohorts.
- The ethnic groups with the highest persistence rates on average were Latino students (63%), students categorized as 'Other' ethnicities (61%) and Filipino students (59%).

City College Fact Book 2008: Highlights

- From the Fall 2003 cohort to the Fall 2007 cohort, term persistence rates were the highest for students under age 18 (70%), followed by students between ages 18-24 (59%), and for students ages 30 to 39 (53%) on average.

Student Outcomes

- A general trend showed that the City College student population had lower success rates compared to the success rates of the general student population within all colleges in the district across gender, ethnicity and age between 2003/04 and 2007/08.
- The annual retention rates for City College remained relatively stable from 2003/04 to 2007/08, with an average of 82%.
- The annual GPA for City College remained relatively stable between 2003/04 and 2007/08, with an average of 2.70.
- A general trend between 2003/04 and 2007/08 showed, as age increased so did GPA.

Annual Awards Conferred

- On average, 62% of the total awards conferred at City College were associate degrees.
- Of the total awards conferred at City College, female students (61%) received more associate degrees, on average, than their male student (39%) counterpart between 2003/04 and 2007/08.
- The number of associate degrees conferred at City College increased for Filipino and Latino students (14% and 8%, respectively) between 2003/04 to 2007/08.
- On average, students between ages 30 and 39 years old consistently displayed a general trend of receiving the highest amount of awards within each category across all award categories.

Annual Transfer

- The annual transfer volume for City College increased 94%, from 2,457 in 2003/04 to 4,769 in 2007/08.
- Of all the students who transferred to a CSU/UC from City College, 88% transferred into the California State University (CSU) system and 12% transferred into the University of California (UC) system.
- Of all the students who transferred from City College, 22% transferred to a private institution and 78% transferred to a public institution.

City College Fact Book 2008: Highlights

- Of all the students who transferred from City College, 79% transferred to an In-State institution and 21% transferred to an Out-of-State institution.

Productivity and Efficiency

- Between 2003/04 and 2007/08, City College had a 12% increase in FTES.
- The average fill rates for City College were the highest for the fall cohorts when compared to spring and summer cohorts (72% vs. 71% and 66%, respectively) between 2003/04 and 2007/08.
- The enrollment trend for the online mode of instruction increased tremendously for summer (246%), fall (579%) and spring (734%) cohorts between 2003/04 and 2007/08.

Human Resources

- There were a total of 1,327 total employees working at City College during Fall 2007.
- The ethnic breakdown showed that White employees comprised 49% of the total employee population, followed by Latino employees (19%) and African American employees comprised 13% of the City College workforce.

City College Section I: Headcount and Student Characteristics

This section of the Fact Book contains student headcount by various student characteristics. The headcount figures are based on official census counts at the end of the semester (all students who dropped or never attended prior to the class census date are not included). The headcount information is reported over a period of five years to analyze trends and establish benchmarks. Headcount information is broken down into the following segments:

- Overall
- Gender
- Ethnicity
- Age
- Education Goal
- Enrollment Status
- Primary Language
- Prior Education Level
- Residence by Service Area
- Units Attempted
- First Generation
- Income Level
- DSPS
- EOPS

City College Section I: Headcount and Student Characteristics

Overall Headcount: Unduplicated student headcount for City College showed a 14% increase between Fall 03 and Fall 07.

Figure 1.1: City College Overall Headcount

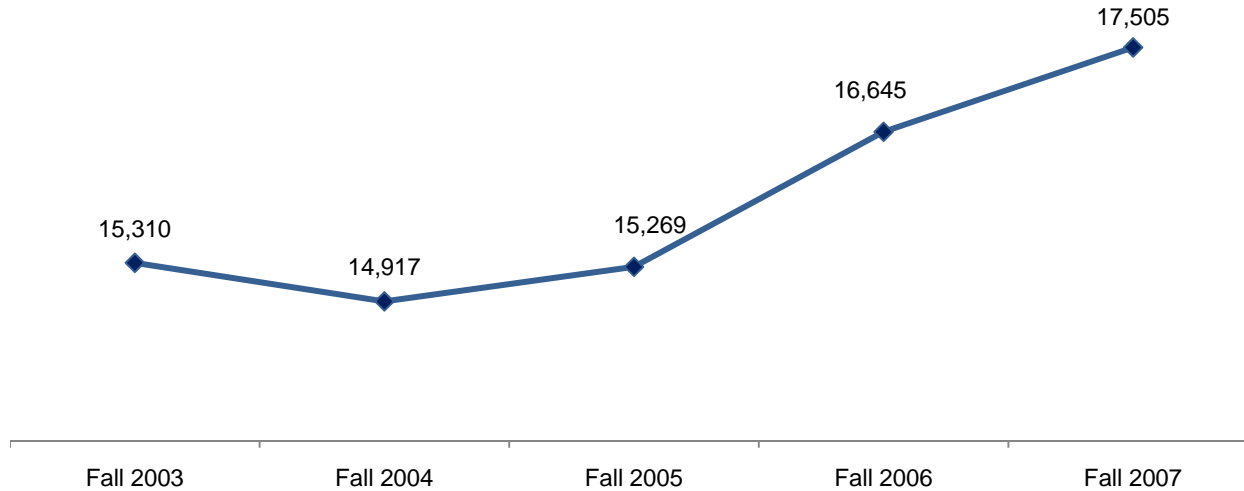


Table 1.1: City College Overall Headcount

	Fall 2003	Fall 2004	Fall 2005	Fall 2006	Fall 2007	% Change Fall 03 and 07
	#	#	#	#	#	
Total	15,310	14,917	15,269	16,645	17,505	14%

Source: SDCCD Information System

City College Section I: Headcount and Student Characteristics

Headcount by Gender: On average, the female student headcount (54%) was higher than their male counterpart (46%), which has remained consistent from Fall 2003 to Fall 2007. Both male and female student headcounts increased between Fall 2003 and Fall 2007, which was consistent with the overall student population trend.

Figure 1.2: City College Headcount by Gender

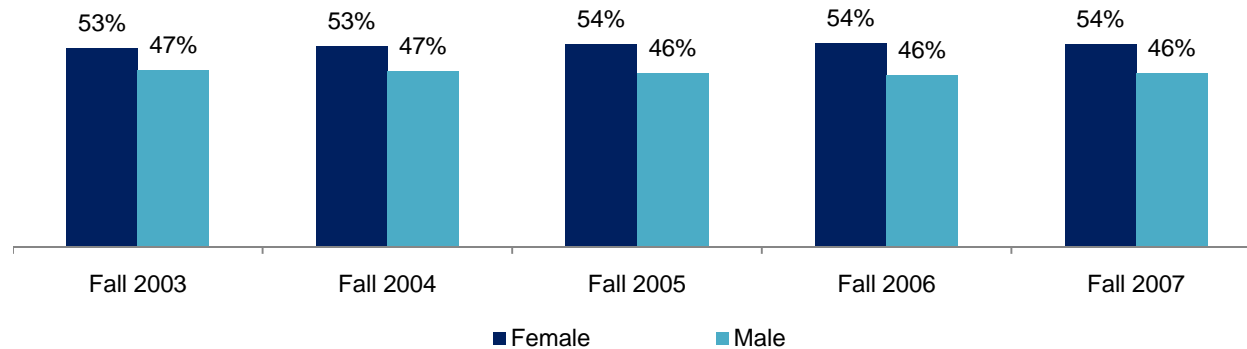


Table 1.2: City College Headcount by Gender

	Fall 2003		Fall 2004		Fall 2005		Fall 2006		Fall 2007		% Change Fall 03 and 07	College Average Fall 03-07	Districtwide Average Fall 03-07
	#	%	#	%	#	%	#	%	#	%			
Female	8,097	53%	7,953	53%	8,223	54%	9,027	54%	9,429	54%	16%	54%	55%
Male	7,199	47%	6,960	47%	7,041	46%	7,614	46%	8,075	46%	12%	46%	44%
Unreported	14	0%	4	0%	5	0%	4	0%	1	0%	-93%	0%	0%
Total	15,310	100%	14,917	100%	15,269	100%	16,645	100%	17,505	100%	14%	100%	100%

Source: SDCCD Information System

City College Section I: Headcount and Student Characteristics

Headcount by Ethnicity: The ethnic groups that comprised the largest headcounts between Fall 2003 and Fall 2007 were White students (32%), Latino students (29%) and African American students (13%). At City College, the Latino student population increased 30% in contrast to students who were categorized as 'Other' ethnicities, which declined 26% between Fall 2003 and Fall 2007. Both the Asian/Pacific Islander and White student headcount at City College (7% and 32%, respectively) were underrepresented when compared to the districtwide Asian/Pacific Islander and White population headcount (12% and 37%, respectively).

Figure 1.3: City College Headcount by Ethnicity

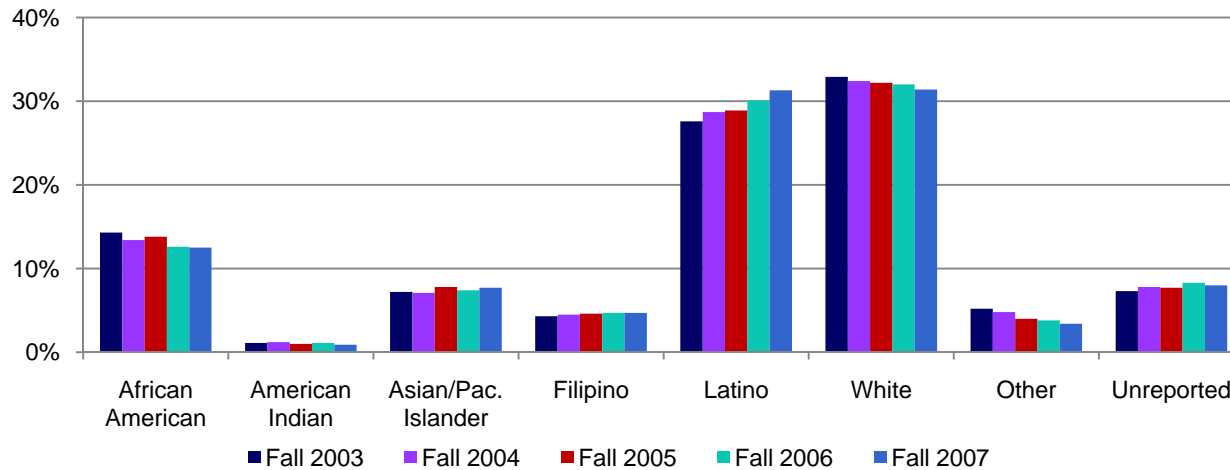


Table 1.3: City College Headcount by Ethnicity

	Fall 2003		Fall 2004		Fall 2005		Fall 2006		Fall 2007		% Change Fall 03 and 07	College Average Fall 03-07	Districtwide Average Fall 03-07
	#	%	#	%	#	%	#	%	#	%			
African American	2,188	14%	2,004	13%	2,104	14%	2,098	13%	2,196	13%	0%	13%	8%
American Indian	175	1%	174	1%	160	1%	180	1%	158	1%	-10%	1%	1%
Asian/Pac. Islander	1,108	7%	1,063	7%	1,185	8%	1,231	7%	1,354	8%	22%	7%	12%
Filipino	663	4%	674	5%	704	5%	784	5%	831	5%	25%	5%	5%
Latino	4,222	28%	4,288	29%	4,412	29%	5,012	30%	5,473	31%	30%	29%	28%
White	5,043	33%	4,835	32%	4,910	32%	5,334	32%	5,500	31%	9%	32%	37%
Other	798	5%	715	5%	614	4%	628	4%	589	3%	-26%	4%	3%
Unreported	1,113	7%	1,164	8%	1,180	8%	1,378	8%	1,404	8%	26%	8%	6%
Total	15,310	100%	14,917	100%	15,269	100%	16,645	100%	17,505	100%	14%	100%	100%

Source: SDCCD Information System

City College Section I: Headcount and Student Characteristics

Headcount by Age: Students who were between ages 18-24, on average, constituted exactly half of the City student population. The same age cohort increased 28% from Fall 2003 to Fall 2007. Student headcount for those who were 50 years and older displayed the greatest disparity at City College when compared to the districtwide student population (5% and 18%, respectively). However, student headcount for those students ages 18-24 (50%) were overrepresented when compared to the districtwide student population (37%).

Figure 1.4: City College Headcount by Age

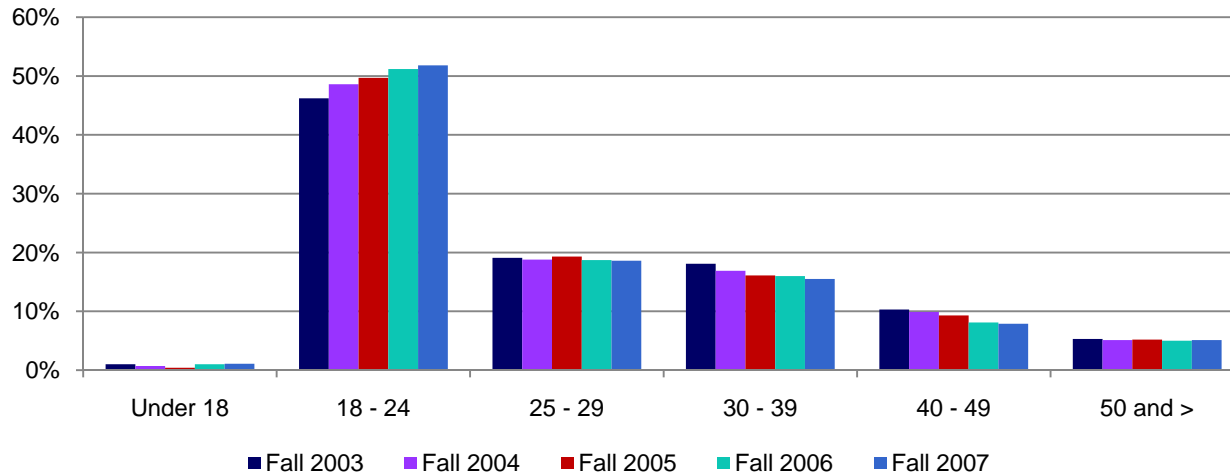


Table 1.4: City College Headcount by Age

	Fall 2003		Fall 2004		Fall 2005		Fall 2006		Fall 2007		% Change Fall 03 and 07	College Average Fall 03-07	Districtwide Average Fall 03-07
	#	%	#	%	#	%	#	%	#	%			
Under 18	156	1%	99	1%	67	0%	163	1%	190	1%	22%	1%	2%
18 - 24	7,068	46%	7,245	49%	7,596	50%	8,522	51%	9,075	52%	28%	50%	37%
25 - 29	2,930	19%	2,797	19%	2,944	19%	3,113	19%	3,253	19%	11%	19%	15%
30 - 39	2,769	18%	2,526	17%	2,462	16%	2,671	16%	2,709	16%	-2%	16%	17%
40 - 49	1,575	10%	1,483	10%	1,413	9%	1,341	8%	1,380	8%	-12%	9%	11%
50 and >	812	5%	767	5%	787	5%	835	5%	896	5%	10%	5%	18%
Unreported	0	0%	0	0%	0	0%	0	0%	2	0%	--	0%	0%
Total	15,310	100%	14,917	100%	15,269	100%	16,645	100%	17,505	100%	14%	100%	100%

Source: SDCCD Information System

City College Section I: Headcount and Student Characteristics

Headcount by Enrollment Status: Sixty-three percent of the student population were continuing students. All enrollment status types showed an overall increase. In particular, the number of current high school students who were enrolled at City College increased by 65%, from 189 students in Fall 2003 to 312 in Fall 2007. Furthermore, the number of returning transfer students also increased by 63% between Fall 2003 and Fall 2007.

Figure 1.5: City College Headcount by Enrollment Status

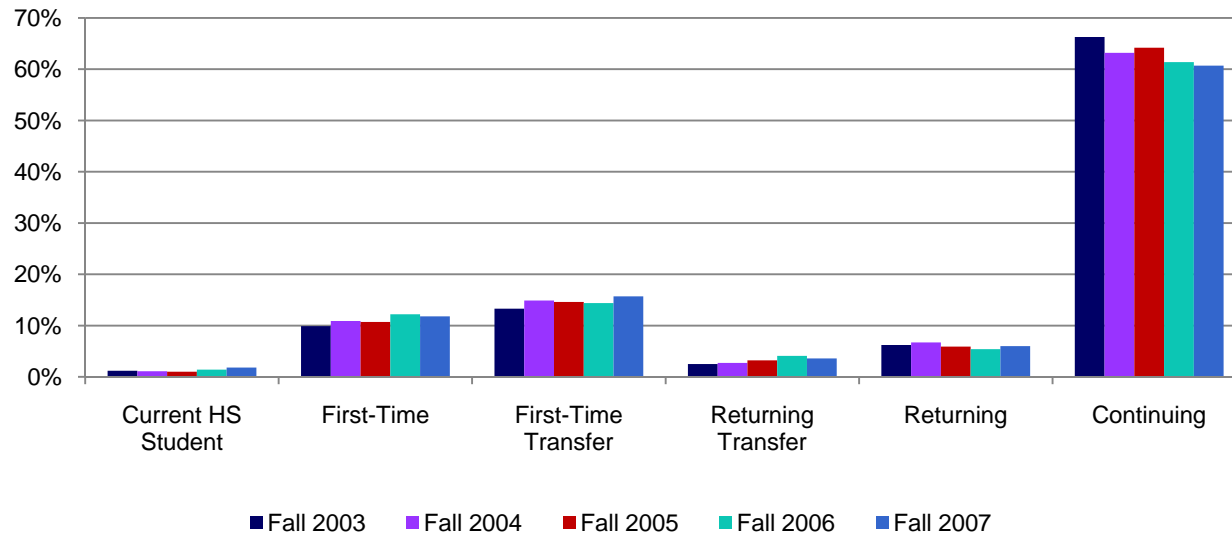


Table 1.5: City College Headcount by Enrollment Status

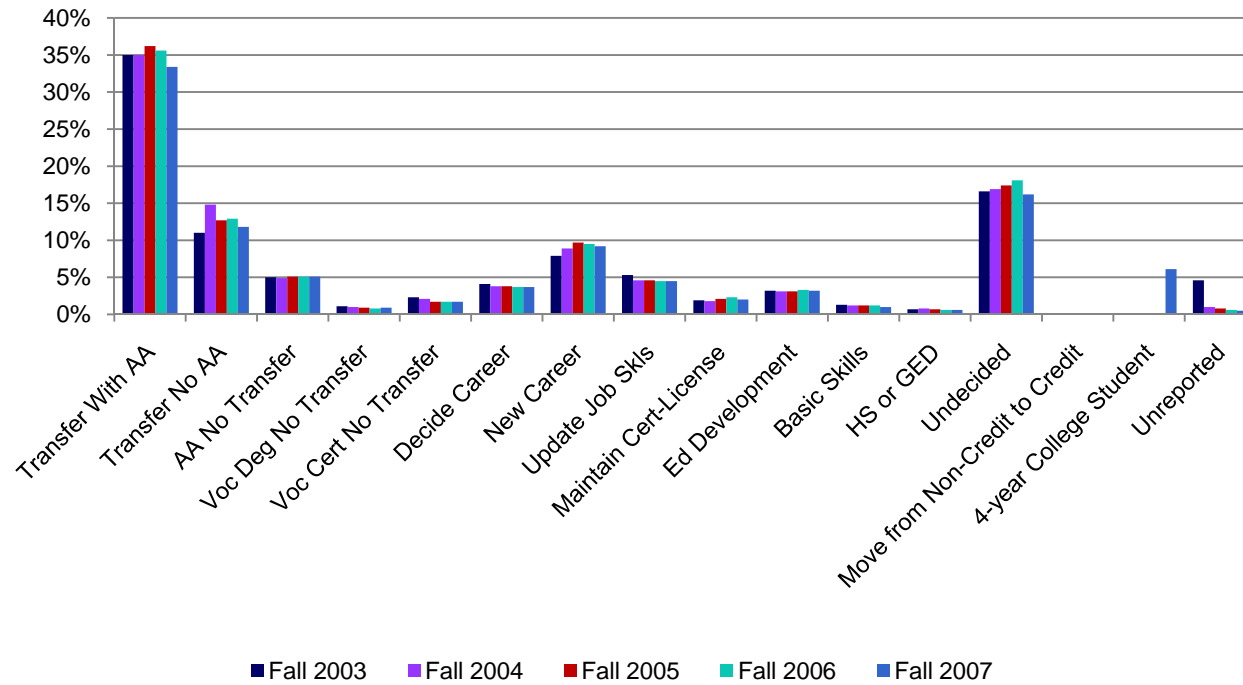
	Fall 2003		Fall 2004		Fall 2005		Fall 2006		Fall 2007		% Change Fall 03 and 07	College Average Fall 03-07	All Colleges Average Fall 03-07
	#	%	#	%	#	%	#	%	#	%			
Current HS Student	189	1%	167	1%	146	1%	228	1%	312	2%	65%	1%	3%
First-Time	1,519	10%	1,628	11%	1,629	11%	2,037	12%	2,070	12%	36%	11%	10%
First-Time Transfer	2,034	13%	2,226	15%	2,222	15%	2,397	14%	2,756	16%	35%	15%	14%
Returning Transfer	385	3%	399	3%	484	3%	683	4%	626	4%	63%	3%	4%
Returning	950	6%	994	7%	899	6%	895	5%	1,045	6%	10%	6%	6%
Continuing	10,144	66%	9,429	63%	9,801	64%	10,218	61%	10,628	61%	5%	63%	62%
Unreported	89	1%	74	1%	88	1%	187	1%	68	0%	-24%	1%	0%
Total	15,310	100%	14,917	100%	15,269	100%	16,645	100%	17,505	100%	14%	100%	100%

Source: SDCCD Information System

City College Section I: Headcount and Student Characteristics

Headcount by Educational Objective: Almost half of the City student population (48%) selected transfer with or without an AA degree as their educational objective. New Career, as an educational objective, increased 33% among students from Fall 2003 to Fall 2007.

Figure 1.6: City College Headcount by Educational Objective



City College Section I: Headcount and Student Characteristics

Table 1.6: City College Headcount by Educational Objective

	Fall 2003		Fall 2004		Fall 2005		Fall 2006		Fall 2007		% Change Fall 03 and 07	College Average Fall 03-07	All Colleges Average Fall 03-07
	#	%	#	%	#	%	#	%	#	%			
Transfer With AA	5,361	35%	5,218	35%	5,524	36%	5,918	36%	5,846	33%	9%	35%	35%
Transfer No AA	1,680	11%	2,212	15%	1,933	13%	2,155	13%	2,059	12%	23%	13%	13%
AA No Transfer	769	5%	728	5%	785	5%	851	5%	892	5%	16%	5%	5%
Voc Deg No Transfer	173	1%	155	1%	142	1%	140	1%	151	1%	-13%	1%	1%
Voc Cert No Transfer	358	2%	318	2%	260	2%	291	2%	294	2%	-18%	2%	1%
Decide Career	631	4%	573	4%	576	4%	611	4%	651	4%	3%	4%	4%
New Career	1,213	8%	1,325	9%	1,482	10%	1,585	10%	1,614	9%	33%	9%	7%
Update Job Skills	810	5%	687	5%	701	5%	747	5%	790	5%	-2%	5%	5%
Maintain Cert-License	294	2%	268	2%	322	2%	376	2%	349	2%	19%	2%	2%
Ed Development	483	3%	455	3%	475	3%	549	3%	555	3%	15%	3%	4%
Basic Skills	193	1%	184	1%	181	1%	204	1%	180	1%	-7%	1%	1%
HS or GED	104	1%	118	1%	107	1%	104	1%	113	1%	9%	1%	1%
Undecided	2,541	17%	2,522	17%	2,656	17%	3,010	18%	2,838	16%	12%	17%	19%
Move from Non-Credit to Credit	0	0%	0	0%	0	0%	0	0%	23	0%	--	0%	0%
4-year College Student	0	0%	0	0%	0	0%	0	0%	1,065	6%	--	1%	1%
Unreported	700	5%	154	1%	125	1%	104	1%	85	1%	-88%	1%	1%
Total	15,310	100%	14,917	100%	15,269	100%	16,645	100%	17,505	100%	14%	100%	100%

Source: SDCCD Information System

City College Section I: Headcount and Student Characteristics

Headcount by Primary Language: On average, 93% of the City student population spoke English as their primary language. This was comparable to the overall student population for all colleges in the district (93%). There was an increase for those who reported speaking English and those who spoke a language other than English (16% and 5%, respectively) between Fall 2003 and Fall 2007.

Figure 1.7: City College Headcount by Primary Language

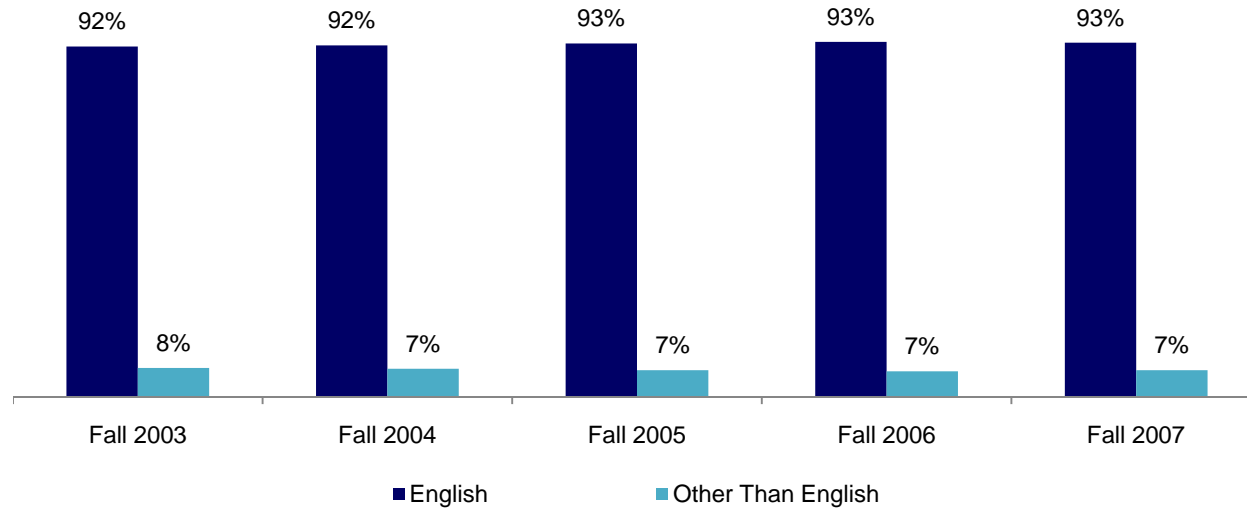


Table 1.7: City College Headcount by Primary Language

	Fall 2003		Fall 2004		Fall 2005		Fall 2006		Fall 2007		% Change Fall 03 and 07	College Average Fall 03-07	All Colleges Average Fall 03-07
	#	%	#	%	#	%	#	%	#	%			
English	14,069	92%	13,759	92%	14,159	93%	15,504	93%	16,262	93%	16%	93%	93%
Other Than English	1,163	8%	1,106	7%	1,076	7%	1,121	7%	1,225	7%	5%	7%	7%
Unreported	78	1%	52	0%	34	0%	20	0%	18	0%	-77%	0%	0%
Total	15,310	100%	14,917	100%	15,269	100%	16,645	100%	17,505	100%	14%	100%	100%

Source: SDCCD Information System

City College Section I: Headcount and Student Characteristics

Headcount by Prior Education Level: From Fall 2003 to Fall 2007, 69% of the City College student population reported that they were high school graduates. City students who were current high school students increased 92% between Fall 2003 and Fall 2007. Eight percent of the City student population had a bachelor's degree or higher and 7% passed the GED.

Figure 1.8: City College Headcount by Prior Education Level

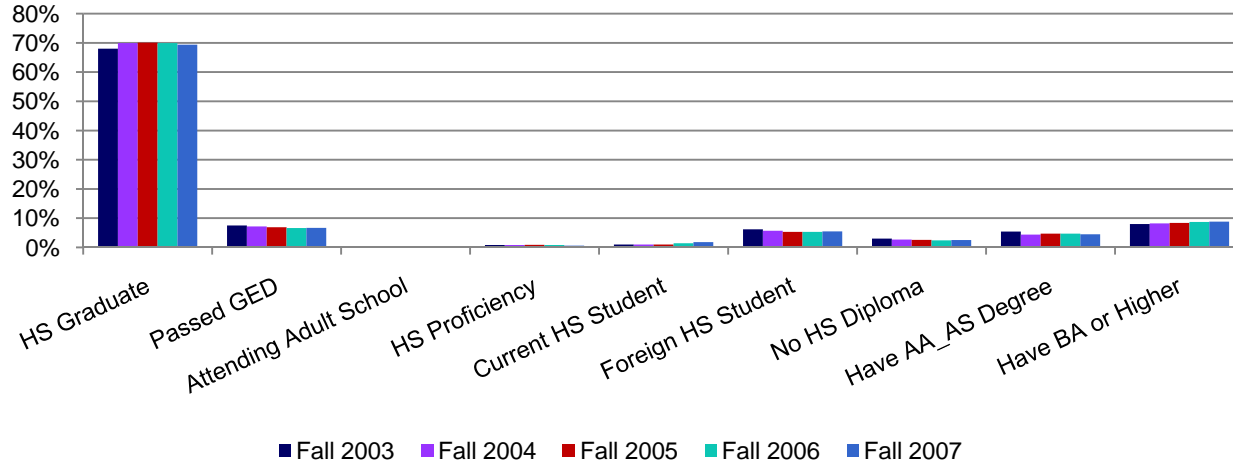


Table 1.8: City College Headcount by Prior Education Level

	Fall 2003		Fall 2004		Fall 2005		Fall 2006		Fall 2007		% Change Fall 03 and 07	College Average Fall 03-07	All Colleges Average Fall 03-07
	#	%	#	%	#	%	#	%	#	%			
HS Graduate	10,411	68%	10,425	70%	10,700	70%	11,639	70%	12,149	69%	17%	69%	67%
Passed GED	1,143	8%	1,070	7%	1,059	7%	1,093	7%	1,179	7%	3%	7%	5%
Attending Adult School	23	0%	29	0%	22	0%	28	0%	37	0%	61%	0%	0%
HS Proficiency	122	1%	119	1%	135	1%	136	1%	111	1%	-9%	1%	1%
Current HS Student	160	1%	146	1%	149	1%	231	1%	307	2%	92%	1%	3%
Foreign HS Student	942	6%	843	6%	805	5%	885	5%	961	6%	2%	6%	5%
No HS Diploma	464	3%	402	3%	397	3%	407	2%	442	3%	-5%	3%	2%
Have AA_AS Degree	826	5%	662	4%	718	5%	778	5%	782	5%	-5%	5%	5%
Have BA or Higher	1,218	8%	1,221	8%	1,284	8%	1,448	9%	1,537	9%	26%	8%	11%
Unreported	1	0%	0	0%	0	0%	0	0%	0	0%	-100%	0%	0%
Total	15,310	100%	14,917	100%	15,269	100%	16,645	100%	17,505	100%	14%	100%	100%

Source: SDCCD Information System

City College Section I: Headcount and Student Characteristics

Headcount by Service Areas: Between Fall 2003 and Fall 2007, on average, 51% of students who resided within the City service area attended City College. Among the three college service areas, the greatest proportion of City students resided within its service area. Approximately, 35% percent of students who resided outside the City service area attended City College.

Figure 1.9: City College Headcount by Service Area

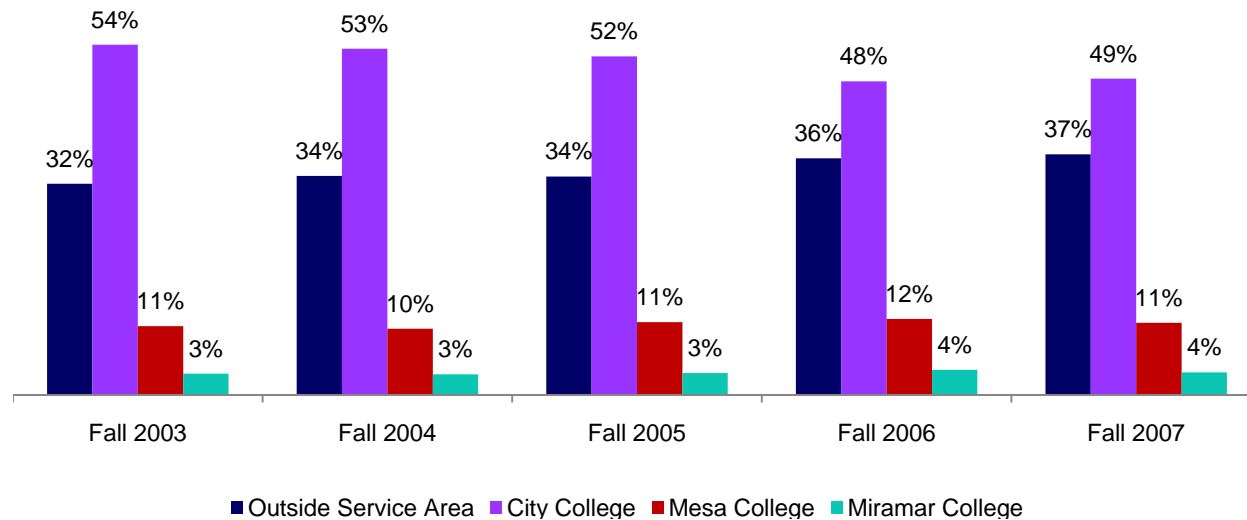


Table 1.9: City College Headcount by Service Area

	Fall 2003		Fall 2004		Fall 2005		Fall 2006		Fall 2007		% Change Fall 03 and 07	College Average Fall 03-07	All Colleges Average Fall 03-07
	#	%	#	%	#	%	#	%	#	%			
Outside Service Area	4,964	32%	5,005	34%	5,115	34%	6,034	36%	6,466	37%	30%	35%	35%
City College	8,229	54%	7,927	53%	7,918	52%	8,011	48%	8,494	49%	3%	51%	30%
Mesa College	1,617	11%	1,515	10%	1,713	11%	1,945	12%	1,941	11%	20%	11%	22%
Miramar College	500	3%	470	3%	523	3%	655	4%	604	4%	21%	3%	12%
Total	15,310	100%	14,917	100%	15,269	100%	16,645	100%	17,505	100%	14%	100%	100%

Source: SDCCD Information System

City College Section I: Headcount and Student Characteristics

Headcount by Units Attempted: On average, almost three-quarters (64%) of the students attempted between 3 to 8.9 units between Fall 2003 and Fall 2007. About one in five City College students (18%) attempted 12 units or more on average, which decreased 6% between Fall 2003 and Fall 2007.

Figure 1.10: City College Headcount by Units Attempted

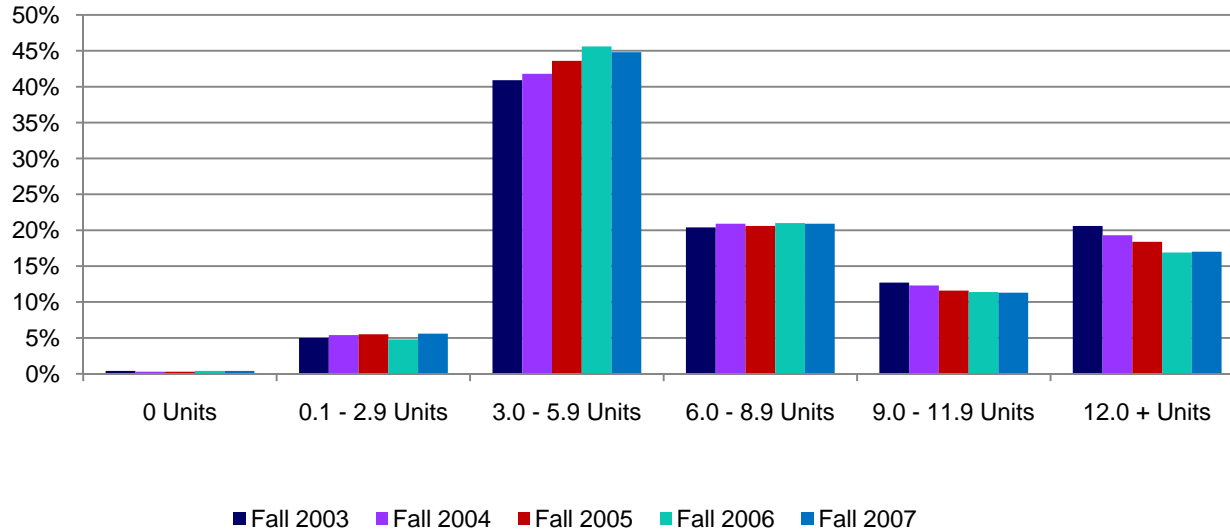


Table 1.10: City College Headcount by Units Attempted

	Fall 2003		Fall 2004		Fall 2005		Fall 2006		Fall 2007		% Change Fall 03 and 07	College Average Fall 03-07	All Colleges Average Fall 03-07
	#	%	#	%	#	%	#	%	#	%			
0 Units	58	0%	49	0%	49	0%	65	0%	77	0%	33%	0%	0%
0.1 - 2.9 Units	760	5%	808	5%	835	6%	800	5%	988	6%	30%	5%	8%
3.0 - 5.9 Units	6,258	41%	6,230	42%	6,653	44%	7,593	46%	7,837	45%	25%	43%	31%
6.0 - 8.9 Units	3,125	20%	3,120	21%	3,152	21%	3,490	21%	3,650	21%	17%	21%	19%
9.0 - 11.9 Units	1,951	13%	1,828	12%	1,773	12%	1,891	11%	1,981	11%	2%	12%	13%
12.0 + Units	3,158	21%	2,882	19%	2,807	18%	2,806	17%	2,972	17%	-6%	18%	29%
Total	15,310	100%	14,917	100%	15,269	100%	16,645	100%	17,505	100%	14%	100%	100%

Source: SDCCD Information System

City College Section I: Headcount and Student Characteristics

Headcount by First Generation: From Fall 2003 to Fall 2007, on average, 30% of the City students reported being first generation college students. Both groups of students, those who were and those who were not first generation college students, displayed an increase in headcount between Fall 03 and Fall 07 (30% and 21%, respectively).

Figure 1.11: City College Headcount by First Generation

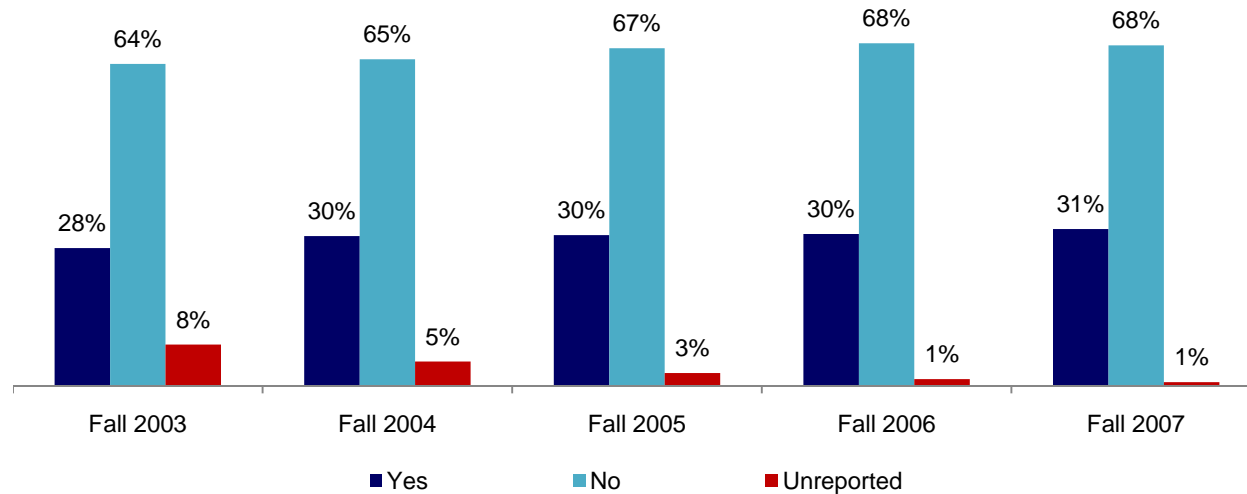


Table 1.11: City College Headcount by First Generation

	Fall 2003		Fall 2004		Fall 2005		Fall 2006		Fall 2007		% Change Fall 03 and 07	College Average Fall 03-07	All Colleges Average Fall 03-07
	#	%	#	%	#	%	#	%	#	%			
Yes	4,209	28%	4,466	30%	4,591	30%	5,049	30%	5,476	31%	30%	30%	24%
No	9,827	64%	9,716	65%	10,275	67%	11,367	68%	11,884	68%	21%	67%	73%
Unreported	1,274	8%	735	5%	403	3%	229	1%	145	1%	-89%	3%	3%
Total	15,310	100%	14,917	100%	15,269	100%	16,645	100%	17,505	100%	14%	100%	100%

Source: SDCCD Information System

City College Section I: Headcount and Student Characteristics

Headcount by Income: Between Fall 2003 and Fall 2007, among those who reported their income levels, almost one-fifth (18%) of the City student population reported making over \$33,000 or more a year on average. The number of students who reported making between \$0-2,999 a year on average increased 78% between Fall 2003 and Fall 2007. It should be noted that there was a large percentage of students who did not report their income level. Consequently, the data may not be representative of the income level of students at City College.

Figure 1.12: City College Headcount by Income

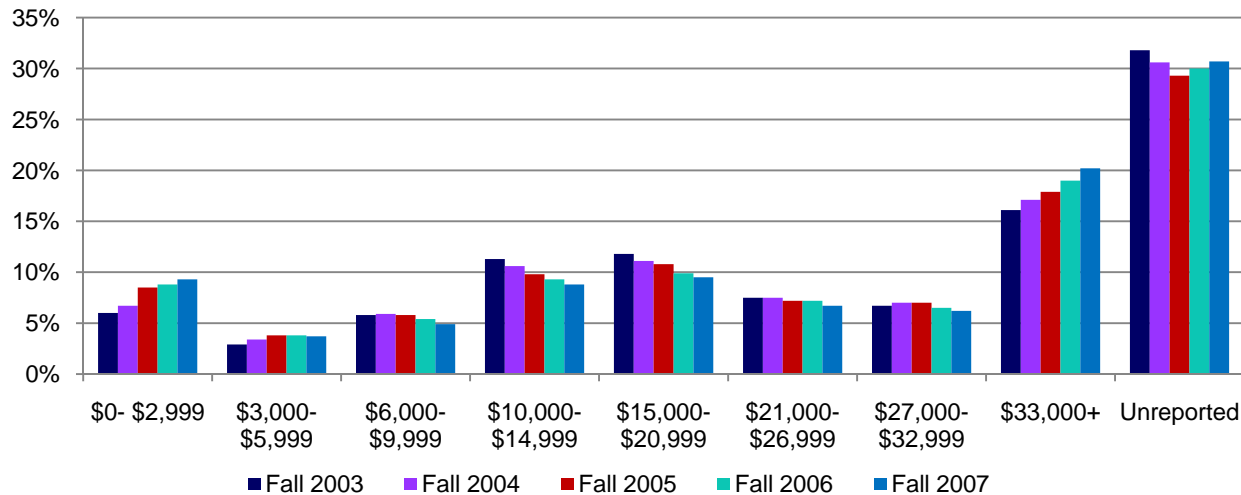


Table 1.12: City College Headcount by Income

	Fall 2003		Fall 2004		Fall 2005		Fall 2006		Fall 2007		% Change Fall 03 and 07	College Average Fall 03-07	All Colleges Average Fall 03-07
	#	%	#	%	#	%	#	%	#	%			
\$0-2,999	917	6%	1,003	7%	1,293	9%	1,460	9%	1,631	9%	78%	8%	7%
\$3,000-5,999	445	3%	510	3%	573	4%	636	4%	646	4%	45%	4%	3%
\$6,000-9,999	893	6%	877	6%	889	6%	905	5%	859	5%	-4%	6%	4%
\$10,000-14,999	1,731	11%	1,588	11%	1,503	10%	1,556	9%	1,544	9%	-11%	10%	8%
\$15,000-20,999	1,813	12%	1,649	11%	1,653	11%	1,647	10%	1,657	10%	-9%	11%	9%
\$21,000-26,999	1,146	8%	1,120	8%	1,096	7%	1,195	7%	1,171	7%	2%	7%	6%
\$27,000-32,999	1,030	7%	1,046	7%	1,064	7%	1,090	7%	1,088	6%	6%	7%	6%
\$33,000+	2,468	16%	2,558	17%	2,731	18%	3,165	19%	3,530	20%	43%	18%	24%
Unreported	4,867	32%	4,566	31%	4,467	29%	4,991	30%	5,379	31%	11%	30%	32%
Total	15,310	100%	14,917	100%	15,269	100%	16,645	100%	17,505	100%	14%	100%	100%

Source: SDCCD Information System

City College Section I: Headcount and Student Characteristics

Disability Support Programs and Services (DSPS): On average, 97% of the City student population had not received any type of disability support services between Fall 2003 and Fall 2007. Moreover, students at City who had received disability services and those who had not received disability services increased 9% and 15%, respectively, from Fall 2003 to Fall 2007.

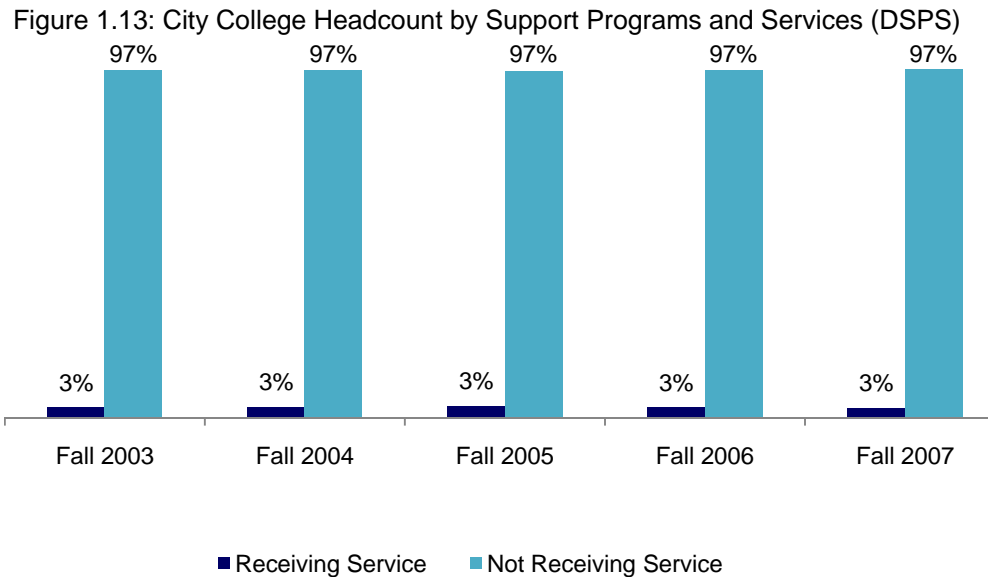


Table 1.13: City College Headcount by Disability Support Programs and Services (DSPS)

	Fall 2003		Fall 2004		Fall 2005		Fall 2006		Fall 2007		% Change Fall 03 and 07	College Average Fall 03-07	All Colleges Average Fall 03-07
	#	%	#	%	#	%	#	%	#	%			
Receiving Service	464	3%	479	3%	506	3%	501	3%	505	3%	9%	3%	3%
Not Receiving Service	14,846	97%	14,438	97%	14,763	97%	16,144	97%	17,000	97%	15%	97%	97%
Total	15,310	100%	14,917	100%	15,269	100%	16,645	100%	17,505	100%	14%	100%	100%

Source: SDCCD Information System

City College Section I: Headcount and Student Characteristics

Headcount by Extended Opportunity Programs and Services (EOPS): Ninety-six percent of the City student population had not received EOPS services between Fall 2003 and Fall 2007. This is comparable to the overall student population for all colleges in the district (97%). However, there was a 28% decrease in the number of students who received EOPS services from Fall 2003 to Fall 2007.

Figure 1.14: City College Headcount by Extended Opportunity Programs and Services (EOPS)

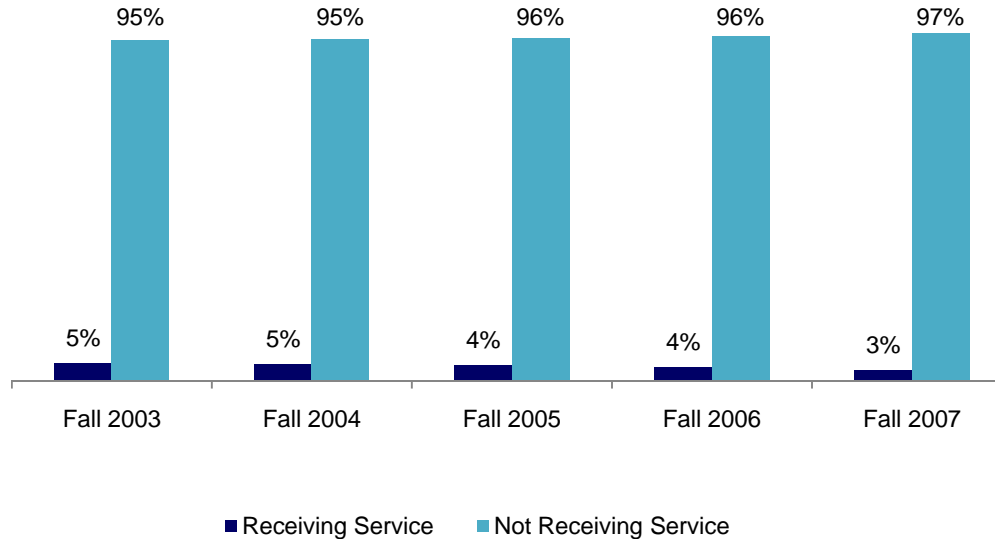


Table 1.14: City College Headcount by Extended Opportunity Programs and Services (EOPS)

	Fall 2003		Fall 2004		Fall 2005		Fall 2006		Fall 2007		% Change Fall 03 and 07	College Average Fall 03-07	All Colleges Average Fall 03-07
	#	%	#	%	#	%	#	%	#	%			
Receiving Service	782	5%	713	5%	670	4%	653	4%	562	3%	-28%	4%	3%
Not Receiving Service	14,528	95%	14,204	95%	14,599	96%	15,992	96%	16,943	97%	17%	96%	97%
Total	15,310	100%	14,917	100%	15,269	100%	16,645	100%	17,505	100%	14%	100%	100%

Source: SDCCD Information System

City College Section I: Headcount and Student Characteristics

Overall Headcount: Unduplicated student headcount for ECC showed a 7% decrease between Fall 03 and Fall 07.

Figure 1.15: Educational Cultural Complex (ECC) Overall Headcount

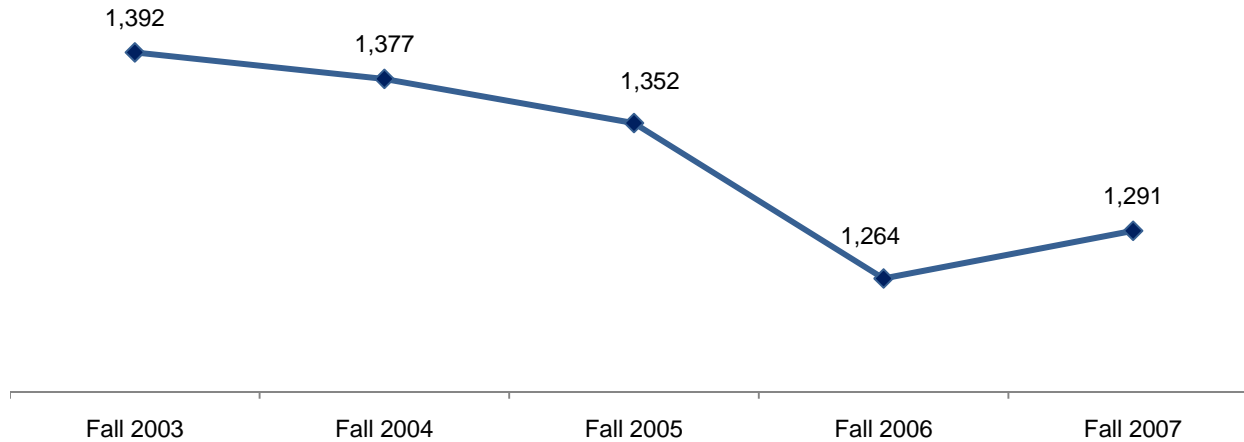


Table 1.15: Educational Cultural Complex (ECC) Overall Headcount

	Fall 2003	Fall 2004	Fall 2005	Fall 2006	Fall 2007	% Change Fall 03 and 07
	#	#	#	#	#	
Total	1,392	1,377	1,352	1,264	1,291	-7%

Source: SDCCD Information System

City College Section I: Headcount and Student Characteristics

Headcount by Gender: On average, the female student headcount (71%) was higher than their male counterpart (29%), which has remained consistent from Fall 2003 to Fall 2007. Both male and female student headcounts decreased between Fall 2003 and Fall 2007 (6% and 9%, respectively), which was consistent with the overall student population trend.

Figure 1.16: Educational Cultural Complex (ECC) Headcount by Gender

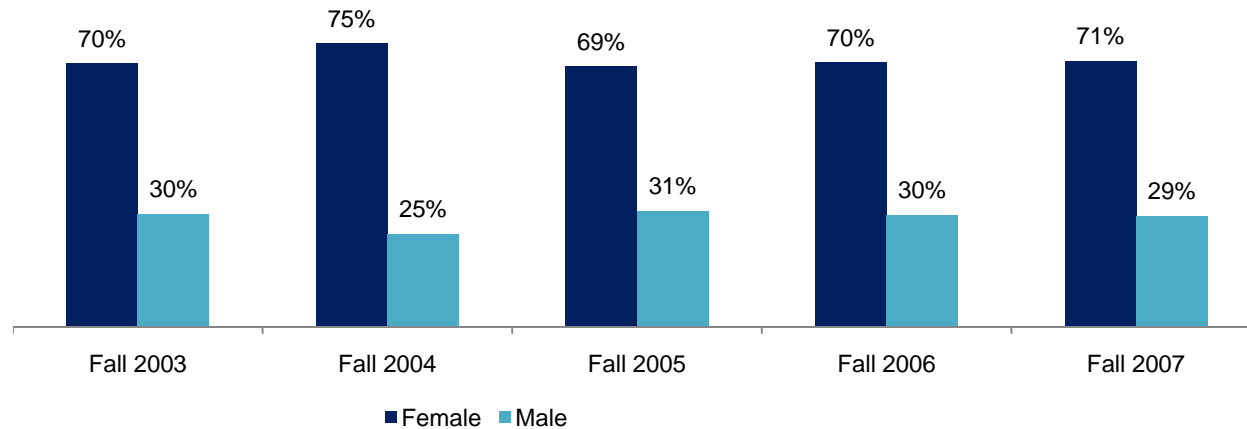


Table 1.16: Educational Cultural Complex (ECC) Headcount by Gender

	Fall 2003		Fall 2004		Fall 2005		Fall 2006		Fall 2007		% Change Fall 03 and 07	College Average Fall 03-07	Districtwide Average Fall 03-07
	#	%	#	%	#	%	#	%	#	%			
Female	974	70%	1,037	75%	936	69%	889	70%	912	71%	-6%	71%	55%
Male	417	30%	339	25%	415	31%	374	30%	379	29%	-9%	29%	44%
Unreported	1	0%	1	0%	1	0%	1	0%	0	0%	-100%	0%	0%
Total	1,392	100%	1,377	100%	1,352	100%	1,264	100%	1,291	100%	-7%	100%	100%

Source: SDCCD Information System

City College Section I: Headcount and Student Characteristics

Headcount by Ethnicity: The ethnic groups that comprised the highest headcount between Fall 2003 and Fall 2007 were Latino students (36%), African American students (28%) and White students (14%). At ECC, the White student population increased by 7% in contrast to students who were categorized as 'Other' ethnicities, which declined 24% between Fall 2003 and Fall 2007. The White student headcount at ECC (14%) was underrepresented when compared to the districtwide White population headcount (37%). However, both the Latino and the African American student headcount at ECC (36% and 28%, respectively) were overrepresented when compared to the districtwide Latino and African American population headcount (36% and 28%, respectively).

Figure 1.17: Educational Cultural Complex (ECC) Headcount by Ethnicity

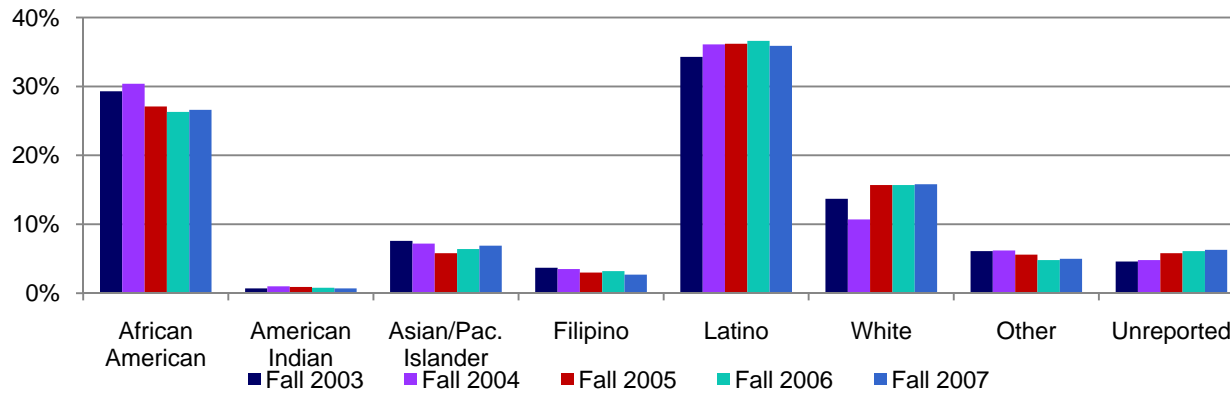


Table 1.17: Educational Cultural Complex (ECC) Headcount by Ethnicity

	Fall 2003		Fall 2004		Fall 2005		Fall 2006		Fall 2007		% Change Fall 03 and 07	College Average Fall 03-07	Districtwide Average Fall 03-07
	#	%	#	%	#	%	#	%	#	%			
African American	408	29%	419	30%	366	27%	333	26%	344	27%	-16%	28%	8%
American Indian	10	1%	14	1%	12	1%	10	1%	9	1%	-10%	1%	1%
Asian/Pac. Islander	106	8%	99	7%	78	6%	81	6%	89	7%	-16%	7%	12%
Filipino	51	4%	48	4%	40	3%	40	3%	35	3%	-31%	3%	5%
Latino	477	34%	497	36%	490	36%	463	37%	464	36%	-3%	36%	28%
White	191	14%	148	11%	212	16%	199	16%	204	16%	7%	14%	37%
Other	85	6%	86	6%	76	6%	61	5%	65	5%	-24%	6%	3%
Unreported	64	5%	66	5%	78	6%	77	6%	81	6%	27%	5%	6%
Total	1,392	100%	1,377	100%	1,352	100%	1,264	100%	1,291	100%	-7%	100%	100%

Source: SDCCD Information System

City College Section I: Headcount and Student Characteristics

Headcount by Age: Students who were between ages 18-24, on average, constituted 37% of the ECC student population. Students who were 50 years and older increased 12%, while students who were under 18 years old decreased 63% from Fall 2003 to Fall 2007. Student headcount for those who were 50 years and older displayed the greatest disparity at ECC when compared to the districtwide student population (7% and 18%, respectively). However, student headcount for those students ages 30-39 (22%) were overrepresented when compared to the districtwide student population (17%).

Figure 1.18: Educational Cultural Complex (ECC) Headcount by Age

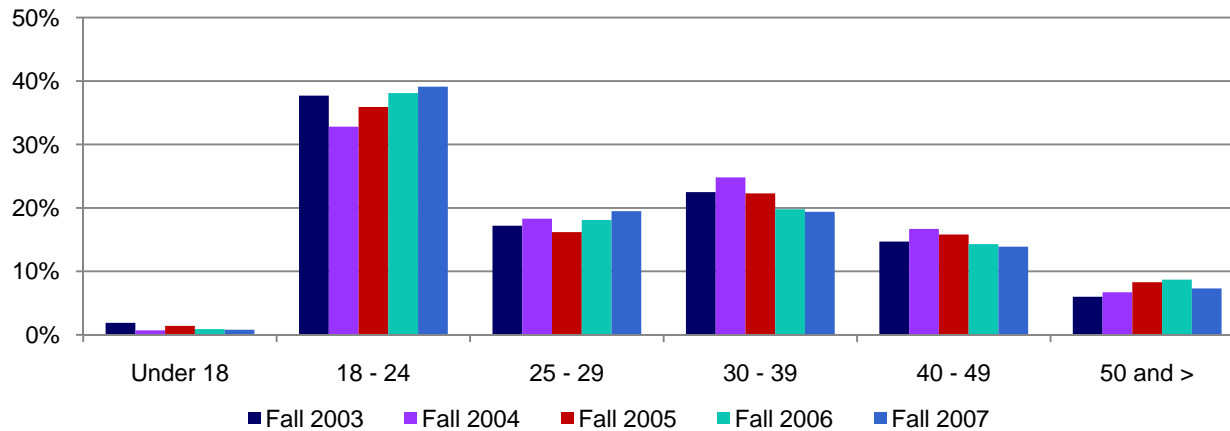


Table 1.18: Educational Cultural Complex (ECC) Headcount by Age

	Fall 2003		Fall 2004		Fall 2005		Fall 2006		Fall 2007		% Change Fall 03 and 07	College Average Fall 03-07	Districtwide Average Fall 03-07
	#	%	#	%	#	%	#	%	#	%			
Under 18	27	2%	9	1%	19	1%	12	1%	10	1%	-63%	1%	2%
18 - 24	525	38%	452	33%	486	36%	482	38%	505	39%	-4%	37%	37%
25 - 29	239	17%	252	18%	219	16%	229	18%	252	20%	5%	18%	15%
30 - 39	313	23%	342	25%	302	22%	250	20%	251	19%	-20%	22%	17%
40 - 49	204	15%	230	17%	214	16%	181	14%	179	14%	-12%	15%	11%
50 and >	84	6%	92	7%	112	8%	110	9%	94	7%	12%	7%	18%
Unreported	0	0%	0	0%	0	0%	0	0%	0	0%	--	0%	0%
Total	1,392	100%	1,377	100%	1,352	100%	1,264	100%	1,291	100%	-7%	100%	100%

Source: SDCCD Information System

City College Section I: Headcount and Student Characteristics

Headcount by Enrollment Status: Sixty-seven percent of the student population were continuing students. The number of returning transfer students increased 51% between Fall 2003 and Fall 2007. However, the number of current high school students decreased 64% between Fall 2003 and Fall 2007.

Figure 1.19: Educational Cultural Complex (ECC) Headcount by Enrollment Status

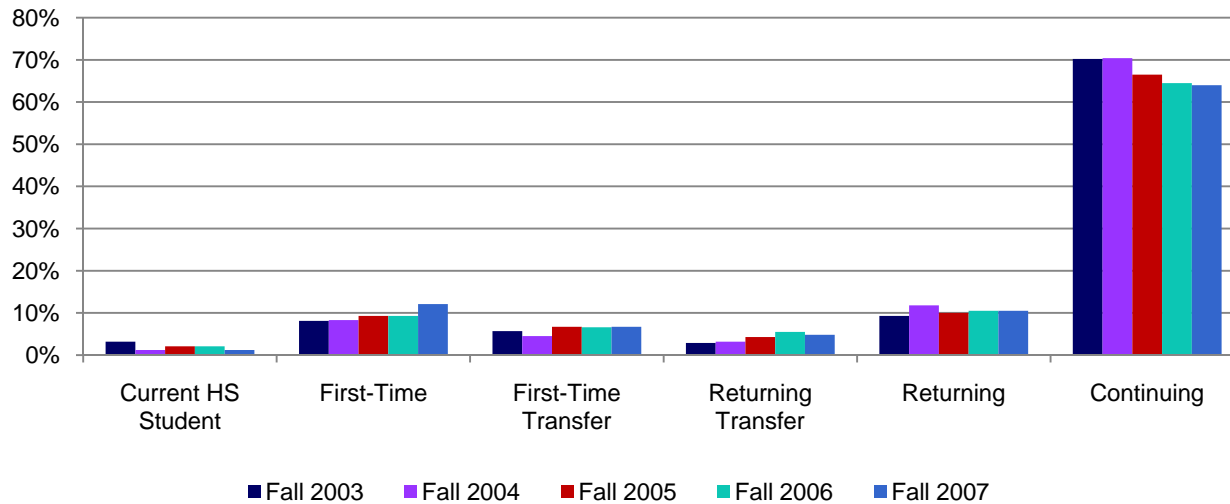


Table 1.19: Educational Cultural Complex (ECC) Headcount by Enrollment Status

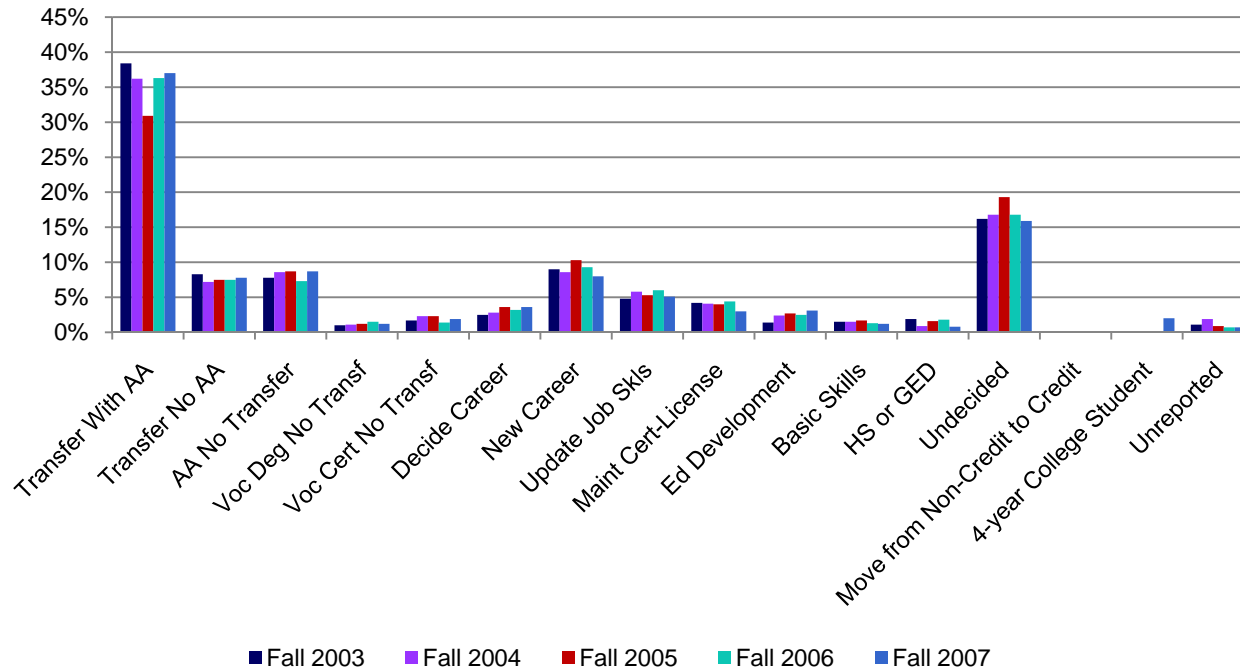
	Fall 2003		Fall 2004		Fall 2005		Fall 2006		Fall 2007		% Change Fall 03 and 07	College Average Fall 03-07	All Colleges Average Fall 03-07
	#	%	#	%	#	%	#	%	#	%			
Current HS Student	44	3%	17	1%	28	2%	27	2%	16	1%	-64%	2%	3%
First-Time	113	8%	114	8%	126	9%	117	9%	156	12%	38%	9%	10%
First-Time Transfer	80	6%	62	5%	91	7%	84	7%	86	7%	8%	6%	14%
Returning Transfer	41	3%	44	3%	58	4%	69	6%	62	5%	51%	4%	4%
Returning	130	9%	162	12%	135	10%	133	11%	135	11%	4%	10%	6%
Continuing	977	70%	970	70%	899	67%	815	65%	826	64%	-15%	67%	62%
Unreported	7	1%	8	1%	15	1%	19	2%	10	1%	43%	1%	0%
Total	1,392	100%	1,377	100%	1,352	100%	1,264	100%	1,291	100%	-7%	100%	100%

Source: SDCCD Information System

City College Section I: Headcount and Student Characteristics

Headcount by Educational Objective: Almost half of the ECC student population (44%) selected transfer with or without an AA degree as their educational objective. Educational development, as an educational objective, increased 100% among ECC students from Fall 2003 to Fall 2007. In contrast, high school or GED, as an educational objective, decreased 63% among ECC students.

Figure 1.20: Educational Cultural Complex (ECC) Headcount by Educational Objective



City College Section I: Headcount and Student Characteristics

Table 1.20: Educational Cultural Complex (ECC) Headcount by Educational Objective

	Fall 2003		Fall 2004		Fall 2005		Fall 2006		Fall 2007		% Change Fall 03 and 07	College Average Fall 03-07	All Colleges Average Fall 03-07
	#	%	#	%	#	%	#	%	#	%			
Transfer With AA	534	38%	498	36%	418	31%	459	36%	478	37%	-10%	36%	35%
Transfer No AA	115	8%	99	7%	102	8%	95	8%	101	8%	-12%	8%	13%
AA No Transfer	109	8%	119	9%	118	9%	92	7%	112	9%	3%	8%	5%
Voc Deg No Transfer	14	1%	15	1%	16	1%	19	2%	15	1%	7%	1%	1%
Voc Cert No Transfer	24	2%	31	2%	31	2%	18	1%	25	2%	4%	2%	1%
Decide Career	35	3%	38	3%	49	4%	40	3%	47	4%	34%	3%	4%
New Career	125	9%	118	9%	139	10%	118	9%	103	8%	-18%	9%	7%
Update Job Skills	67	5%	80	6%	71	5%	76	6%	66	5%	-1%	5%	5%
Maintain Cert-License	59	4%	56	4%	54	4%	55	4%	39	3%	-34%	4%	2%
Ed Development	20	1%	33	2%	36	3%	31	3%	40	3%	100%	2%	4%
Basic Skills	21	2%	21	2%	23	2%	17	1%	15	1%	-29%	1%	1%
HS or GED	27	2%	12	1%	22	2%	23	2%	10	1%	-63%	1%	1%
Undecided	226	16%	231	17%	261	19%	212	17%	205	16%	-9%	17%	19%
Move from Non-Credit to Credit	0	0%	0	0%	0	0%	0	0%	0	0%	--	0%	0%
4-year College Student	0	0%	0	0%	0	0%	0	0%	26	2%	--	0%	1%
Unreported	16	1%	26	2%	12	1%	9	1%	9	1%	-44%	1%	1%
Total	1,392	100%	1,377	100%	1,352	100%	1,264	100%	1,291	100%	-7%	100%	100%

Source: SDCCD Information System

City College Section I: Headcount and Student Characteristics

Headcount by Primary Language: On average, 89% of the ECC student population spoke English as their primary language. There was a decrease for those who reported speaking English and those who spoke a language other than English (4% and 33%, respectively) between Fall 2003 and Fall 2007.

Figure 1.21: Educational Cultural Complex (ECC) Headcount by Primary Language

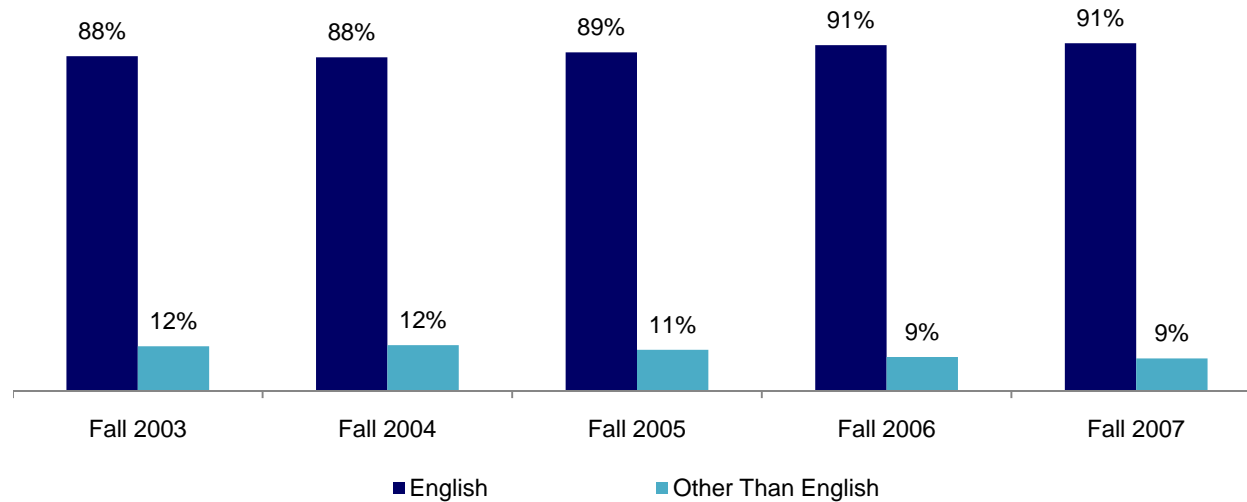


Table 1.21: Educational Cultural Complex (ECC) Headcount by Primary Language

	Fall 2003		Fall 2004		Fall 2005		Fall 2006		Fall 2007		% Change Fall 03 and 07	College Average Fall 03-07	All Colleges Average Fall 03-07
	#	%	#	%	#	%	#	%	#	%			
English	1,222	88%	1,205	88%	1,201	89%	1,147	91%	1,177	91%	-4%	89%	93%
Other Than English	163	12%	165	12%	146	11%	112	9%	110	9%	-33%	10%	7%
Unreported	7	1%	7	1%	5	0%	5	0%	4	0%	-43%	0%	0%
Total	1,392	100%	1,377	100%	1,352	100%	1,264	100%	1,291	100%	-7%	100%	100%

Source: SDCCD Information System

City College Section I: Headcount and Student Characteristics

Headcount by Prior Education Level: From Fall 2003 to Fall 2007, 64% of the ECC student population reported that they were high school graduates. ECC students who were current high school students decreased by 55% between Fall 2003 and Fall 2007. Seven percent of the ECC student population had a bachelor's degree or higher and 8% passed the GED.

Figure 1.22: Educational Cultural Complex (ECC) Headcount by Prior Education Level

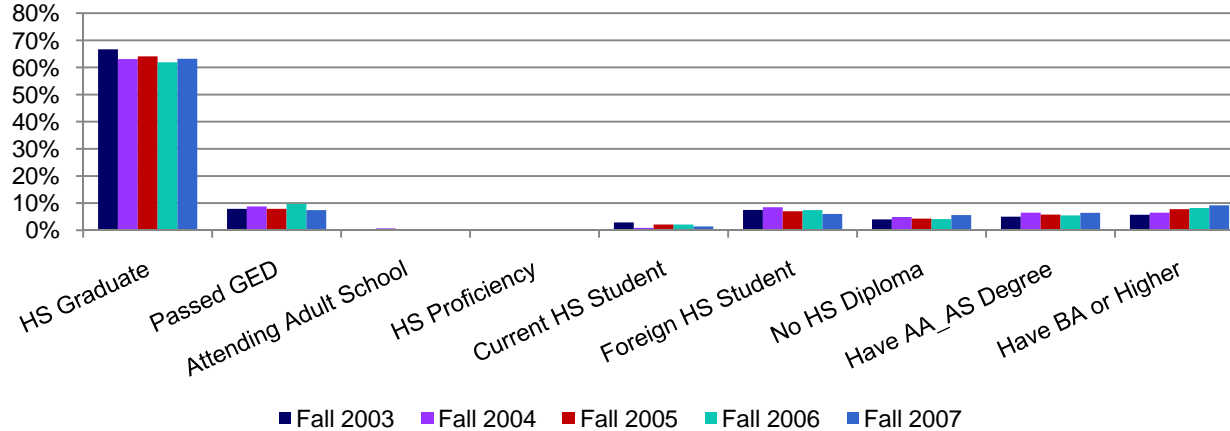


Table 1.22: Educational Cultural Complex (ECC) Headcount by Prior Education Level

	Fall 2003		Fall 2004		Fall 2005		Fall 2006		Fall 2007		% Change Fall 03 and 07	College Average Fall 03-07	All Colleges Average Fall 03-07
	#	%	#	%	#	%	#	%	#	%			
HS Graduate	928	67%	869	63%	866	64%	783	62%	816	63%	-12%	64%	67%
Passed GED	110	8%	121	9%	107	8%	122	10%	96	7%	-13%	8%	5%
Attending Adult School	1	0%	10	1%	7	1%	6	1%	4	0%	300%	0%	0%
HS Proficiency	5	0%	1	0%	7	1%	6	1%	6	1%	20%	0%	1%
Current HS Student	40	3%	13	1%	29	2%	27	2%	18	1%	-55%	2%	3%
Foreign HS Student	105	8%	117	9%	94	7%	94	7%	78	6%	-26%	7%	5%
No HS Diploma	55	4%	67	5%	58	4%	52	4%	72	6%	31%	5%	2%
Have AA_AS Degree	69	5%	89	7%	78	6%	70	6%	82	6%	19%	6%	5%
Have BA or Higher	79	6%	90	7%	106	8%	104	8%	119	9%	51%	7%	11%
Unreported	0	0%	0	0%	0	0%	0	0%	0	0%	--	0%	0%
Total	1,392	100%	1,377	100%	1,352	100%	1,264	100%	1,291	100%	-7%	100%	100%

Source: SDCCD Information System

City College Section I: Headcount and Student Characteristics

Headcount by Service Areas: Between Fall 2003 and Fall 2007, on average, 64% of students who resided within the City College service area attended ECC. Among all three college service areas, City College had the greatest proportion of students who resided within its service area that attended ECC.

Figure 1.23: Educational Cultural Complex (ECC) Headcount by Service Area

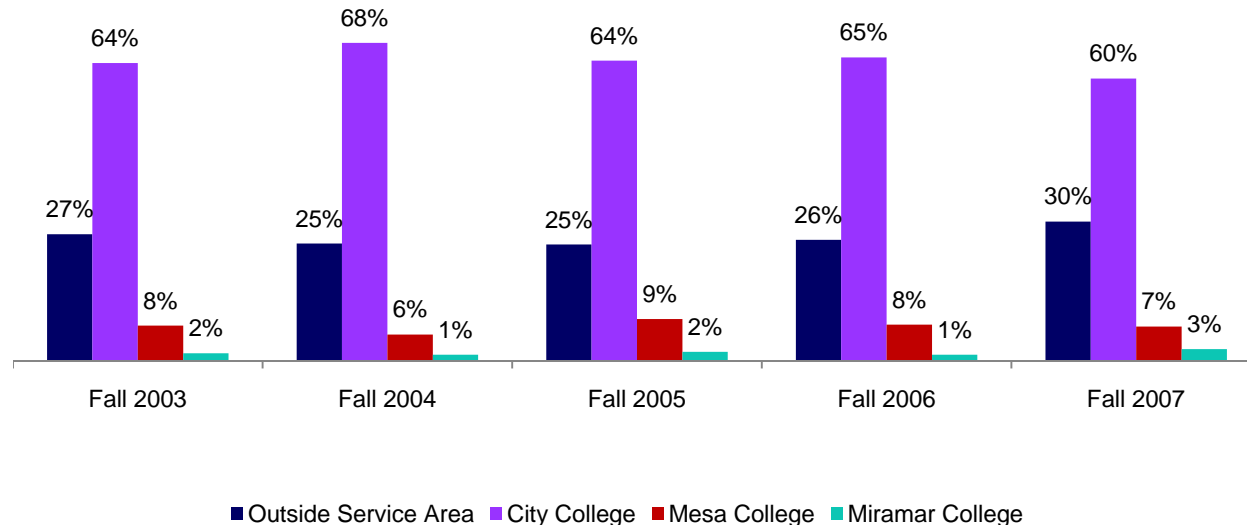


Table 1.23: Educational Cultural Complex (ECC) Headcount by Service Area

	Fall 2003		Fall 2004		Fall 2005		Fall 2006		Fall 2007		% Change Fall 03 and 07	College Average Fall 03-07	All Colleges Average Fall 03-07
	#	%	#	%	#	%	#	%	#	%			
Outside Service Area	377	27%	345	25%	336	25%	328	26%	385	30%	2%	27%	35%
City College	886	64%	935	68%	867	64%	819	65%	778	60%	-12%	64%	30%
Mesa College	106	8%	78	6%	122	9%	99	8%	95	7%	-10%	7%	22%
Miramar College	23	2%	19	1%	27	2%	18	1%	33	3%	43%	2%	12%
Total	1,392	100%	1,377	100%	1,352	100%	1,264	100%	1,291	100%	-7%	100%	100%

Source: SDCCD Information System

City College Section I: Headcount and Student Characteristics

Headcount by Units Attempted: On average, almost all of the students (93%) attempted between 3 to 8.9 units between Fall 2003 and Fall 2007. Only 1% of ECC students attempted 12 units or more on average, which decreased 30% between Fall 2003 and Fall 2007. ECC students that attempted 0.1 to 2.9 units increased 680% from Fall 2003 to Fall 2007.

Figure 1.24: Educational Cultural Complex (ECC) Headcount by Units Attempted

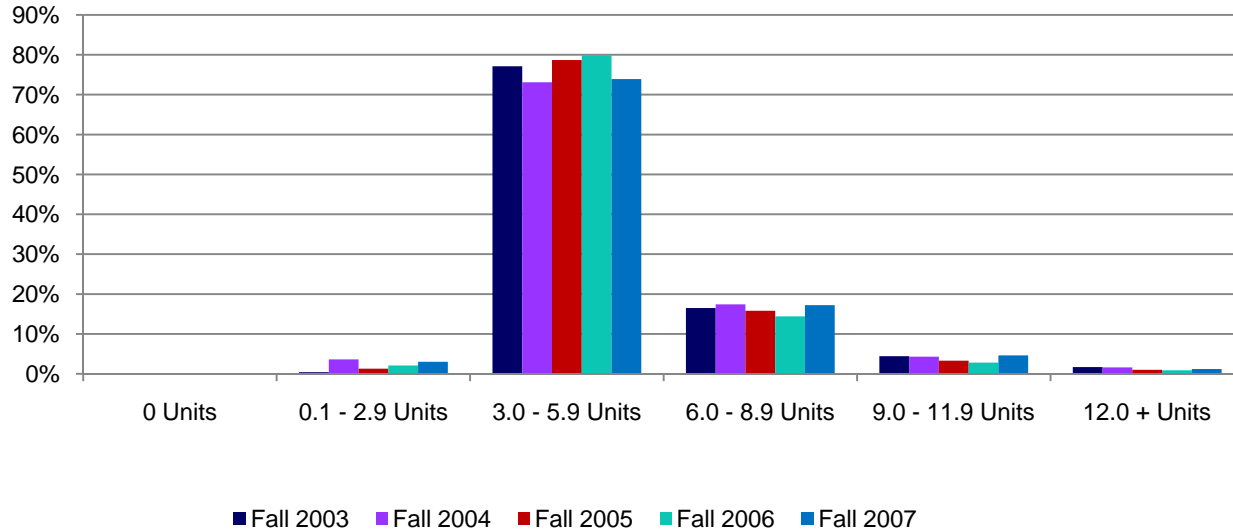


Table 1.24: Educational Cultural Complex (ECC) Headcount by Units Attempted

	Fall 2003		Fall 2004		Fall 2005		Fall 2006		Fall 2007		% Change Fall 03 and 07	College Average Fall 03-07	All Colleges Average Fall 03-07
	#	%	#	%	#	%	#	%	#	%			
0 Units	0	0%	0	0%	0	0%	0	0%	0	0%	--	0%	0%
0.1 - 2.9 Units	5	0%	49	4%	17	1%	26	2%	39	3%	680%	2%	8%
3.0 - 5.9 Units	1,073	77%	1,007	73%	1,064	79%	1,010	80%	954	74%	-11%	77%	31%
6.0 - 8.9 Units	230	17%	240	17%	213	16%	182	14%	222	17%	-3%	16%	19%
9.0 - 11.9 Units	61	4%	59	4%	45	3%	35	3%	60	5%	-2%	4%	13%
12.0 + Units	23	2%	22	2%	13	1%	11	1%	16	1%	-30%	1%	29%
Total	1,392	100%	1,377	100%	1,352	100%	1,264	100%	1,291	100%	-7%	100%	100%

Source: SDCCD Information System

City College Section I: Headcount and Student Characteristics

Headcount by First Generation: From Fall 2003 to Fall 2007, on average, 36% of the students reported being first generation college students. Both groups of students, those who were and those who were not first generation college students, displayed an increase between Fall 03 and Fall 07 (4% and 1%, respectively).

Figure 1.25: Educational Cultural Complex (ECC) Headcount by First Generation

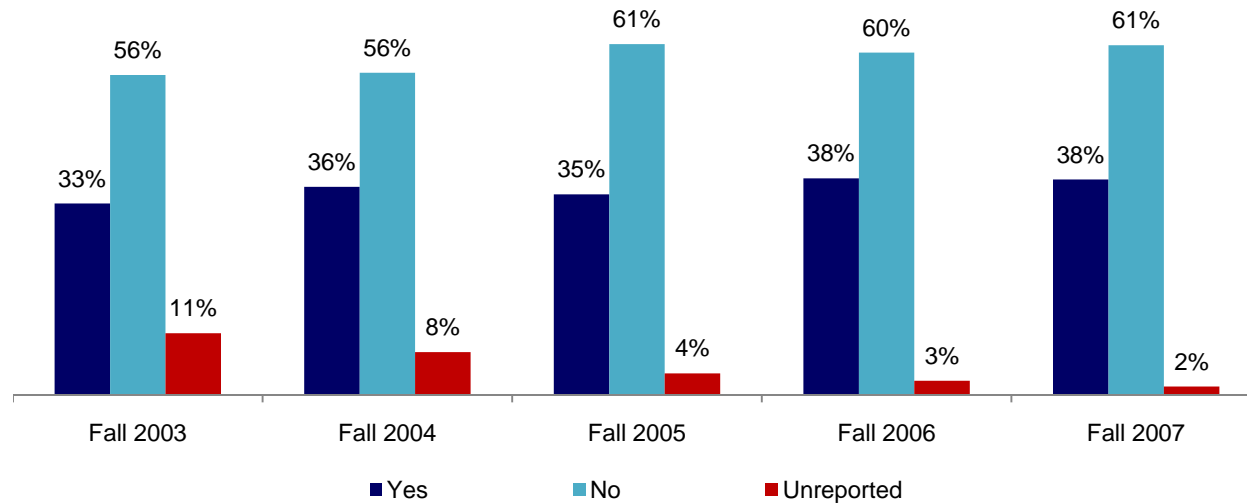


Table 1.25: Educational Cultural Complex (ECC) Headcount by First Generation

	Fall 2003		Fall 2004		Fall 2005		Fall 2006		Fall 2007		% Change Fall 03 and 07	College Average Fall 03-07	All Colleges Average Fall 03-07
	#	%	#	%	#	%	#	%	#	%			
Yes	465	33%	500	36%	473	35%	478	38%	485	38%	4%	36%	24%
No	777	56%	774	56%	828	61%	755	60%	787	61%	1%	59%	73%
Unreported	150	11%	103	8%	51	4%	31	3%	19	2%	-87%	5%	3%
Total	1,392	100%	1,377	100%	1,352	100%	1,264	100%	1,291	100%	-7%	100%	100%

Source: SDCCD Information System

City College Section I: Headcount and Student Characteristics

Headcount by Income: Between Fall 2003 and Fall 2007, among those who reported their income levels, 14% of the ECC student population reported making either \$15,000-20,999 or over \$33,000 or more a year on average. The number of students who reported making between \$0-2,999 a year on average increased 73% between Fall 2003 and Fall 2007. It should be noted that there was a large percentage of students who did not report their income level. Consequently, the data may not be representative of the income level of students at ECC.

Figure 1.26: Educational Cultural Complex (ECC) Headcount by Income

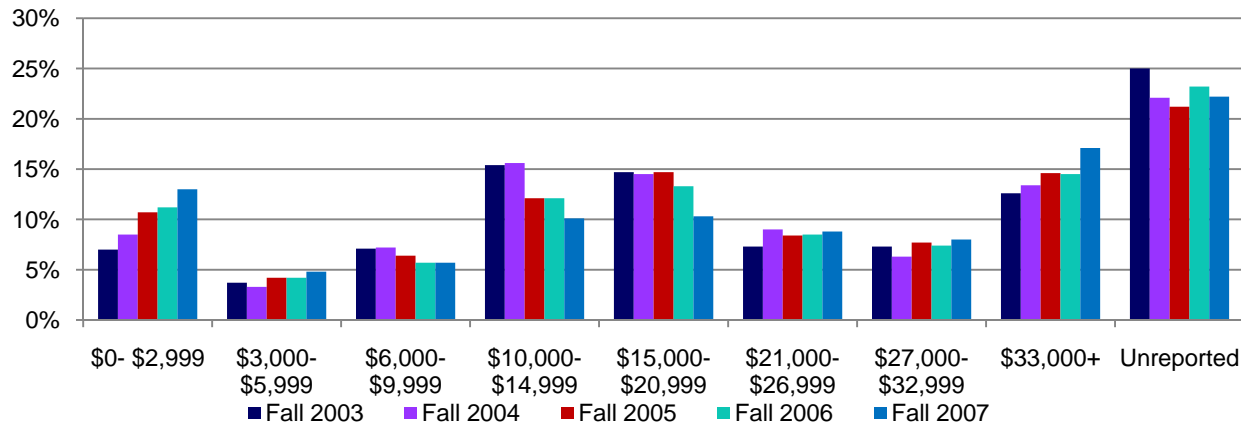


Table 1.26: Educational Cultural Complex (ECC) Headcount by Income

	Fall 2003		Fall 2004		Fall 2005		Fall 2006		Fall 2007		% Change Fall 03 and 07	College Average Fall 03-07	All Colleges Average Fall 03-07
	#	%	#	%	#	%	#	%	#	%			
\$0-2,999	97	7%	117	9%	145	11%	142	11%	168	13%	73%	10%	7%
\$3,000-5,999	51	4%	46	3%	57	4%	53	4%	62	5%	22%	4%	3%
\$6,000-9,999	99	7%	99	7%	87	6%	72	6%	74	6%	-25%	6%	4%
\$10,000-14,999	215	15%	215	16%	164	12%	153	12%	130	10%	-40%	13%	8%
\$15,000-20,999	204	15%	200	15%	199	15%	168	13%	133	10%	-35%	14%	9%
\$21,000-26,999	102	7%	124	9%	113	8%	107	9%	114	9%	12%	8%	6%
\$27,000-32,999	101	7%	87	6%	104	8%	93	7%	103	8%	2%	7%	6%
\$33,000+	175	13%	185	13%	197	15%	183	15%	221	17%	26%	14%	24%
Unreported	348	25%	304	22%	286	21%	293	23%	286	22%	-18%	23%	32%
Total	1,392	100%	1,377	100%	1,352	100%	1,264	100%	1,291	100%	-7%	100%	100%

Source: SDCCD Information System

City College Section I: Headcount and Student Characteristics

Disability Support Programs and Services (DSPS): On average, 97% of the student population had not received any type of disability support services between Fall 2003 and Fall 2007. Moreover, the number of students who received disability services increased 93%, while those students who had not received disability services decreased 9% from Fall 2003 to Fall 2007.

Figure 1.27: Educational Cultural Complex (ECC) Headcount by Support Programs and Services (DSPS)

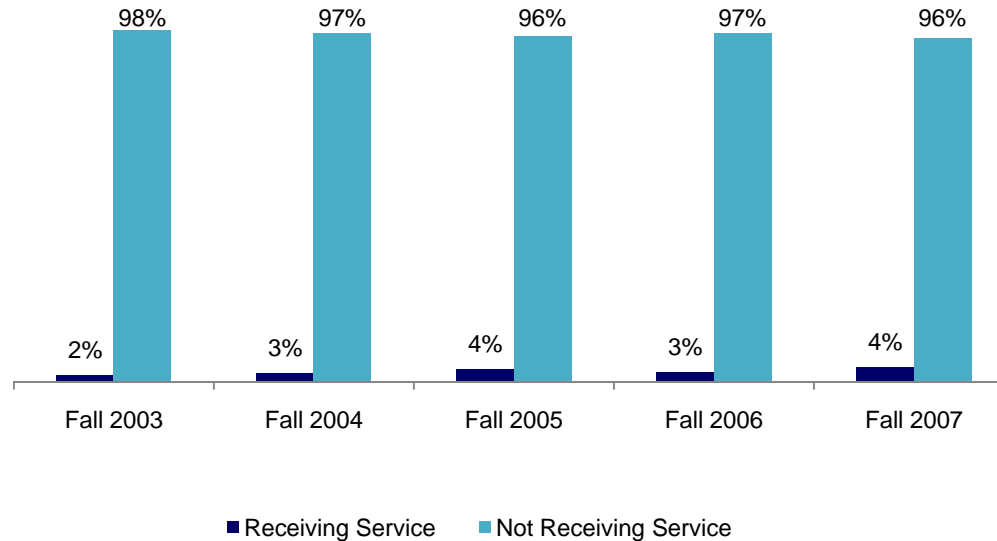


Table 1.27: Educational Cultural Complex (ECC) Headcount by Disability Support Programs and Services (DSPS)

	Fall 2003		Fall 2004		Fall 2005		Fall 2006		Fall 2007		% Change Fall 03 and 07	College Average Fall 03-07	All Colleges Average Fall 03-07
	#	%	#	%	#	%	#	%	#	%			
Receiving Service	29	2%	37	3%	48	4%	37	3%	56	4%	93%	3%	3%
Not Receiving Service	1,363	98%	1,340	97%	1,304	96%	1,227	97%	1,235	96%	-9%	97%	97%
Total	1,392	100%	1,377	100%	1,352	100%	1,264	100%	1,291	100%	-7%	100%	100%

Source: SDCCD Information System

City College Section I: Headcount and Student Characteristics

Headcount by Extended Opportunity Programs and Services (EOPS): Ninety-four percent of the ECC student population had not received EOPS services between Fall 2003 and Fall 2007. This is comparable to the overall student population for all colleges in the district. However, students at ECC who received EOPS services and those who had not received EOPS services decreased 42% and 4%, respectively, from Fall 2003 to Fall 2007.

Figure 1.28: Educational Cultural Complex (ECC) Headcount by Extended Opportunity Programs and Services (EOPS)

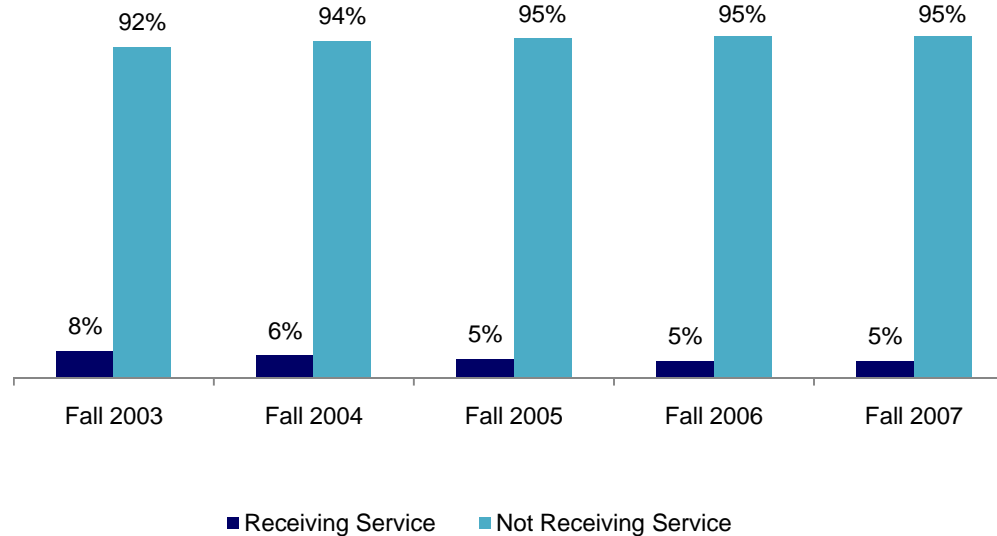


Table 1.28: Educational Cultural Complex (ECC) Headcount by Extended Opportunity Programs and Services (EOPS)

	Fall 2003		Fall 2004		Fall 2005		Fall 2006		Fall 2007		% Change Fall 03 and 07	College Average Fall 03-07	All Colleges Average Fall 03-07
	#	%	#	%	#	%	#	%	#	%			
Receiving Service	107	8%	87	6%	73	5%	60	5%	62	5%	-42%	6%	3%
Not Receiving Service	1,285	92%	1,290	94%	1,279	95%	1,204	95%	1,229	95%	-4%	94%	97%
Total	1,392	100%	1,377	100%	1,352	100%	1,264	100%	1,291	100%	-7%	100%	100%

Source: SDCCD Information System

City College Section II: Term Persistence Rates

This section of the Fact Book contains information on student term persistence rates. For purposes of this report, term persistence rate is the measure of students who were enrolled in a fall term as of census (eliminating drops and never attends prior to census) and who completed the term with a grade notation of (A, B, C, CR, D, F, I, NC, RD), then were enrolled as of census in the subsequent spring term and received a grade notation for that term. The information in this section includes five years of data and is broken down by gender, age and ethnicity.

City College Section II: Term Persistence Rates

Overall Term Persistence: The average term persistence rate for first-time City College students was 57% between Fall 2003 and Fall 2007 cohorts. Persistence rates peaked to a high of 58% for the Fall 2004 cohort and dipped to a low of 56% in the Fall 2003 and 2007 cohorts. Overall, persistence rates remained relatively stable from the Fall 2003 cohort to the Fall 2007 cohort.

Figure 2.1: City College First-Time Student Term Persistence

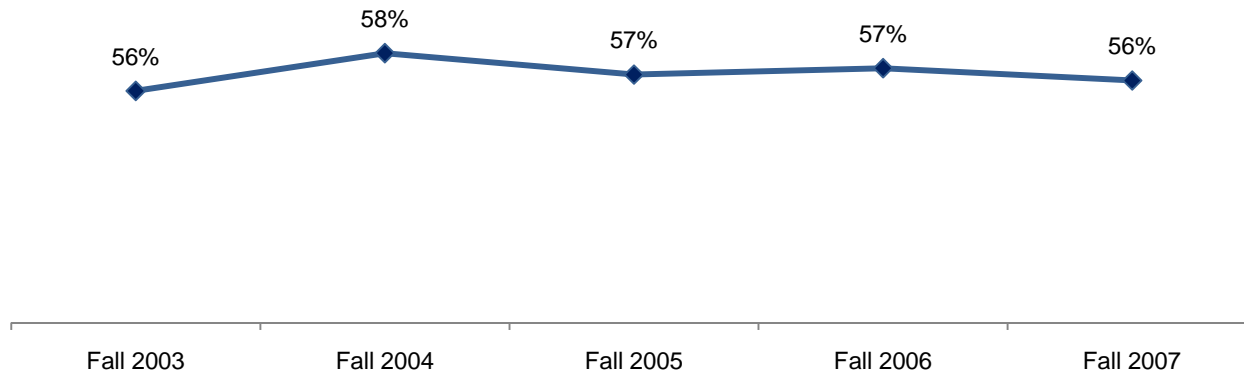


Table 2.1: City College First-Time Student Term Persistence

Cohort	Fall	Spring	Persistence
Fall 2003	1,343	749	56%
Fall 2004	1,469	857	58%
Fall 2005	1,482	843	57%
Fall 2006	1,874	1,074	57%
Fall 2007	1,921	1,085	56%
Average			57%

Source: SDCCD Information System

City College Section II: Term Persistence Rates

Term Persistence by Gender: On average, term persistence rates of female students (60%) were higher than their male student counterpart (54%) between Fall 2003 and Fall 2007 cohorts. The persistence rates trend for females showed a 2% increase, while males showed a 2% decrease from the Fall 2003 cohort to the Fall 2007 cohort.

Figure 2.2: City College First-Time Student Term Persistence by Gender

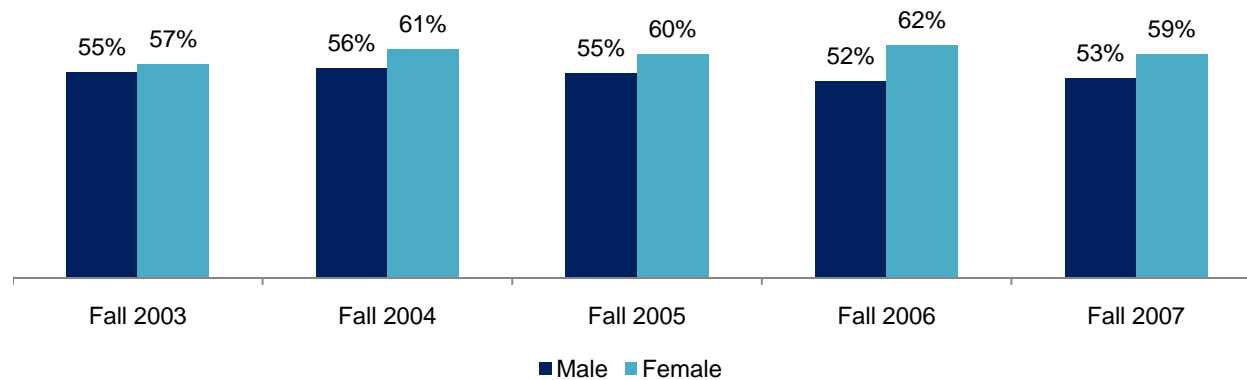


Table 2.2: City College First-Time Student Term Persistence by Gender

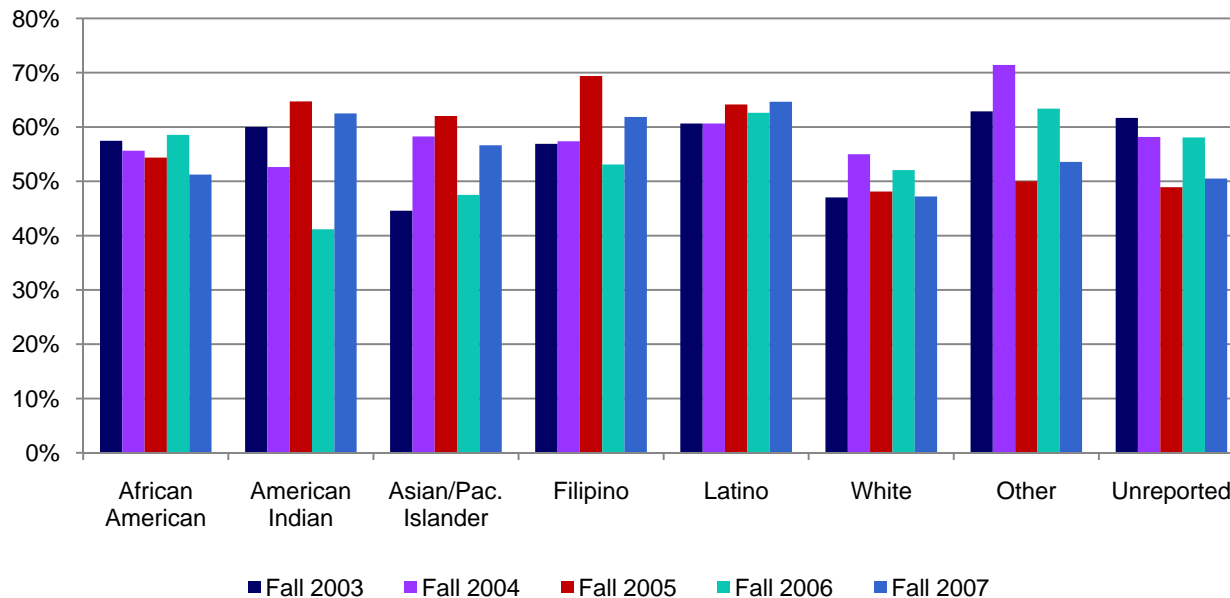
Cohort	Male			Female			Unreported		
	Fall	Spring	Persistence	Fall	Spring	Persistence	Fall	Spring	Persistence
Fall 2003	726	397	55%	615	350	57%	2	2	100%
Fall 2004	705	393	56%	764	464	61%	0	0	--
Fall 2005	785	428	55%	697	415	60%	0	0	--
Fall 2006	882	461	52%	992	613	62%	0	0	--
Fall 2007	901	479	53%	1,020	606	59%	0	0	--
Average			54%			60%			100%

Source: SDCCD Information System

City College Section II: Term Persistence Rates

Term Persistence by Ethnicity: The ethnic groups with the highest term persistence rates on average were Latino students (63%), students categorized as 'Other' ethnicities (61%) and Filipino students (59%). Persistence rates peaked to a high of 71% for students who were categorized as "Other" ethnicities in the Fall 2004 cohort among all ethnic groups. Persistence rates for Latino and African American students peaked to a high of 65% and 59% respectively in the Fall 2007 and Fall 2006 cohorts. Persistence rates for students who were categorized as 'Other' ethnicities decreased 9%, while persistence rates for Asian/Pacific Islander students increased 12%, from 45% in the Fall 2003 cohort to 57% in the Fall 2007 cohort.

Figure 2.3: City College First-Time Student Term Persistence by Ethnicity



City College Section II: Term Persistence Rates

Table 2.3: City College First-Time Student Term Persistence by Ethnicity

Cohort	African American			American Indian			Asian/Pac. Islander			Filipino		
	Fall	Spring	Persistence	Fall	Spring	Persistence	Fall	Spring	Persistence	Fall	Spring	Persistence
Fall 2003	188	108	57%	20	12	60%	74	33	45%	58	33	57%
Fall 2004	178	99	56%	19	10	53%	91	53	58%	61	35	57%
Fall 2005	206	112	54%	17	11	65%	79	49	62%	49	34	69%
Fall 2006	205	120	59%	17	7	41%	120	57	48%	81	43	53%
Fall 2007	240	123	51%	16	10	63%	143	81	57%	76	47	62%
Average			55%			56%			54%			59%

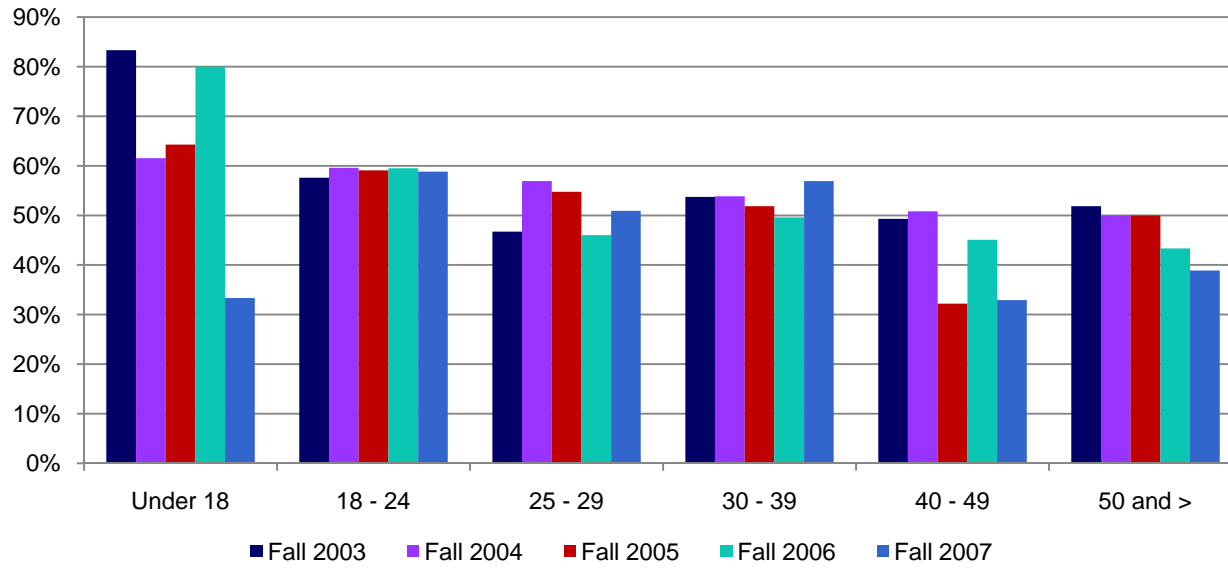
Cohort	Latino			White			Other			Unreported		
	Fall	Spring	Persistence	Fall	Spring	Persistence	Fall	Spring	Persistence	Fall	Spring	Persistence
Fall 2003	493	299	61%	353	166	47%	97	61	63%	60	37	62%
Fall 2004	564	342	61%	402	221	55%	56	40	71%	98	57	58%
Fall 2005	569	365	64%	428	206	48%	42	21	50%	92	45	49%
Fall 2006	722	452	63%	534	278	52%	71	45	63%	124	72	58%
Fall 2007	772	499	65%	519	245	47%	56	30	54%	99	50	51%
Average			63%			50%			61%			55%

Source: SDCCD Information System

City College Section II: Term Persistence Rates

Term Persistence by Age: From the Fall 2003 cohort to the Fall 2007 cohort, term persistence rates were the highest for students under age 18 (70%), followed by students ages 18-24 (59%), and students between ages 30 to 39 (53%) on average. For students under age 18, persistence rates peaked to a high of 83% in the Fall 2003 cohort and decreased by 50% to 33% in the Fall 2007 cohort.

Figure 2.4: City College First-Time Student Term Persistence by Age



City College Section II: Term Persistence Rates

Table 2.4: City College First-Time Student Term Persistence by Age

Cohort	Under 18			18 - 24			25 - 29		
	Fall	Spring	Persistence	Fall	Spring	Persistence	Fall	Spring	Persistence
Fall 2003	18	15	83%	939	541	58%	152	71	47%
Fall 2004	13	8	62%	1,119	667	60%	123	70	57%
Fall 2005	14	9	64%	1,129	667	59%	126	69	55%
Fall 2006	15	12	80%	1,511	899	59%	126	58	46%
Fall 2007	6	2	33%	1,506	886	59%	161	82	51%
Average			70%			59%			51%

Cohort	30 - 39			40 - 49			50 and >		
	Fall	Spring	Persistence	Fall	Spring	Persistence	Fall	Spring	Persistence
Fall 2003	134	72	54%	73	36	49%	27	14	52%
Fall 2004	117	63	54%	61	31	51%	36	18	50%
Fall 2005	108	56	52%	59	19	32%	46	23	50%
Fall 2006	121	60	50%	71	32	45%	30	13	43%
Fall 2007	130	74	57%	82	27	33%	36	14	39%
Average			53%			42%			47%

Source: SDCCD Information System

City College Section III: Student Outcomes

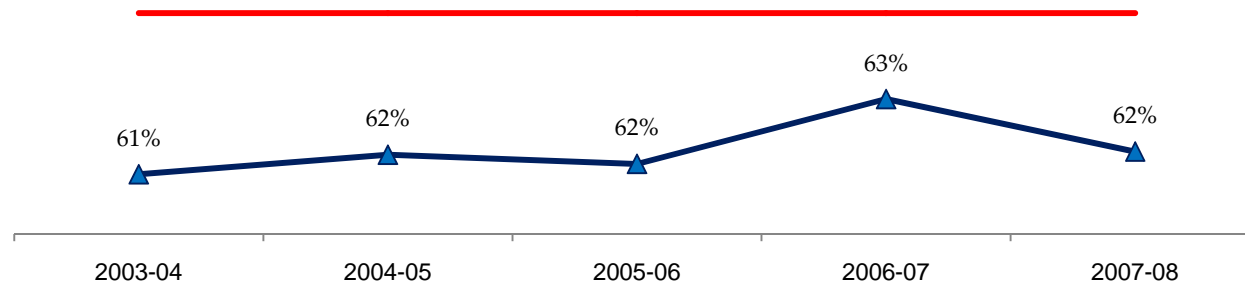
This section of the Fact Book contains information on various student outcomes which may be considered indirect assessments of student learning. The outcomes included in this section are: 1) Annual Student Success Rates, 2) Annual Retention Rates, 3) Annual GPA, 4) Annual Awards Conferred, and 5) Annual Transfers. All of the information in this section includes five years of data and is broken down by gender, age and ethnicity. The following describes in detail each of the outcomes listed.

- 1) **Success Rates.** The first outcome reported in this section is successful course completion, or student success rate. For purposes of this report, the success rate is the percentage of students who completed a course with a grade of A, B, C, or CR out of total enrollments as of census.
- 2) **Retention Rates.** The second outcome reported in this section is retention. For purposes of this report, the retention rate is the percentage of students who completed a course with a grade of A, B, C, D, F, CR, NC, I or RD out of total enrollments as of census.
- 3) **Annual GPA.** The third outcome reported in this section is annual GPA. For purposes of this report, the annual GPA is the cumulative grade point average of all courses taken for a grade in one academic year.
- 4) **Annual Awards Conferred.** The fourth outcome reported in this section is the annual awards conferred. For purposes of this report, the annual awards conferred are the total number of associate degrees and certificates awarded in a single academic year (summer, fall and spring).
- 5) **Annual Transfers.** The last outcome reported in this section is the number of annual students who transfer annually. For purposes of this report, the annual transfers are the total number of students who transferred during an academic year to either a CSU, UC, private or out-of-state four-year institution.

City College Section III: Student Outcomes (Success Rates)

Overall Success Rates: City College annual success rates slightly increased from 2003/04 to 2007/08, with an average of 62%. This success rate average was below the average success rate of all colleges districtwide (65%).

Figure 3.1: City College Success Rates



*Red line marks All Colleges average 2003-08 success rate.

Table 3.1: City College Success Rates

	2003-04	2004-05	2005-06	2006-07	2007-08	College Average 2003-08	All Colleges Average 2003-08
	%	%	%	%	%		
Average	61%	62%	62%	63%	62%	62%	65%

Source: SDCCD Information System

Note: Tutoring classes are excluded.

City College Section III: Student Outcomes (Success Rates)

Success Rates by Gender On average, both male and female students (62% each) had comparable success rate averages between 2003/04 and 2007/08. At City College, both male and female students had lower success rate averages than male and female students (64% and 66%, respectively) within all colleges in the district. However, both gender success rate averages fell below the success rate average of all colleges in the district (65%).

Figure 3.2: City College Success Rates by Gender

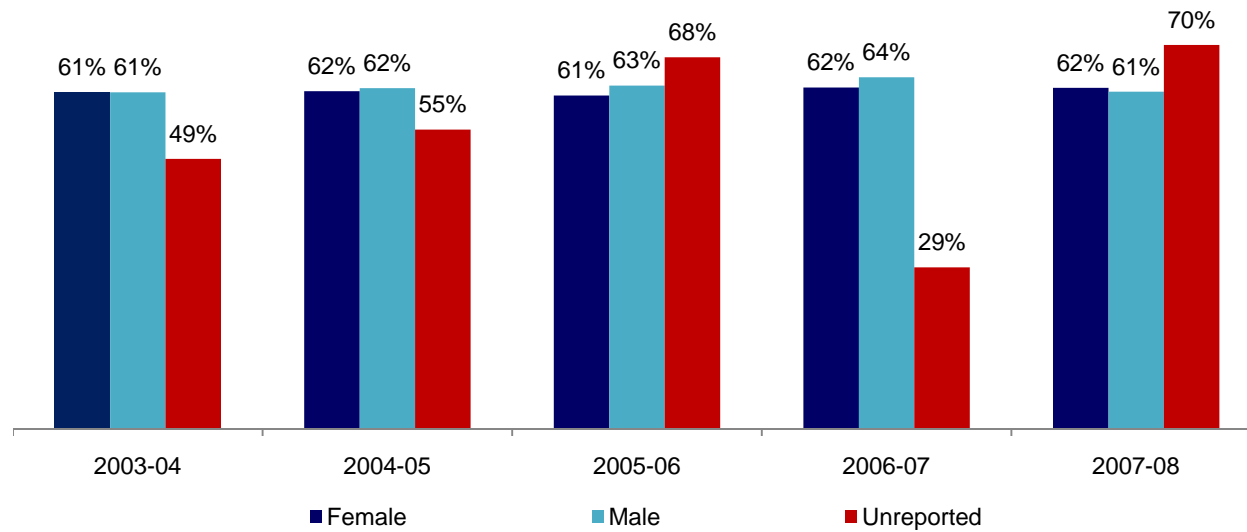


Table 3.2: City College Success Rates by Gender

	2003-04	2004-05	2005-06	2006-07	2007-08	College Average 2003-08	All Colleges Average 2003-08
	%	%	%	%	%		
Female	61%	62%	61%	62%	62%	62%	66%
Male	61%	62%	63%	64%	61%	62%	64%
Unreported	49%	55%	68%	29%	70%	53%	62%
Average	61%	62%	62%	63%	62%	62%	65%

Source: SDCCD Information System

Note: Tutoring classes are excluded.

City College Section III: Student Outcomes (Success Rates)

Success Rates by Ethnicity: On average, the ethnic groups with the highest success rates were White students (68%), Asian/Pacific Islander students (67%) and Filipino students (65%) between 2003/04 and 2007/08. Success rates for African American, American Indian, Latino and students categorized as 'Other' ethnicities fell below the success rate averages of both City College and all colleges in the district (62% and 65%, respectively).

Figure 3.3: City College Success Rates by Ethnicity

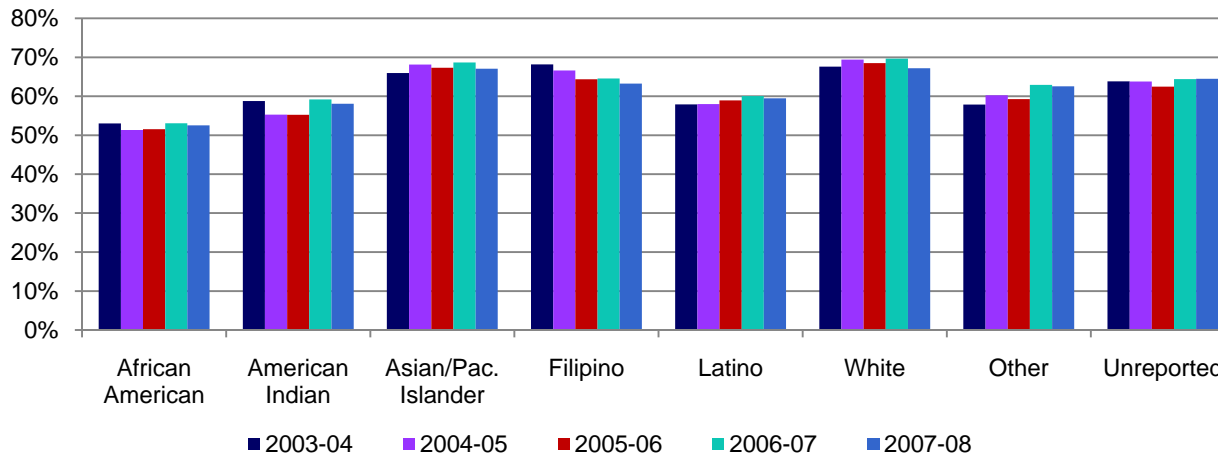


Table 3.3: City College Success Rates by Ethnicity

	2003-04	2004-05	2005-06	2006-07	2007-08	College Average 2003-08	All Colleges Average 2003-08
	%	%	%	%	%		
African American	53%	51%	52%	53%	53%	52%	54%
American Indian	59%	55%	55%	59%	58%	57%	61%
Asian/Pac. Islander	66%	68%	67%	69%	67%	67%	69%
Filipino	68%	67%	64%	65%	63%	65%	65%
Latino	58%	58%	59%	60%	59%	59%	60%
White	68%	69%	69%	70%	67%	68%	69%
Other	58%	60%	59%	63%	63%	60%	63%
Unreported	64%	64%	62%	64%	64%	64%	66%
Average	61%	62%	62%	63%	62%	62%	65%

Source: SDCCD Information System

Note: Tutoring classes are excluded.

City College Section III: Student Outcomes (Success Rates)

Success Rates by Age: From 2003/04 to 2007/08, the age cohorts with the highest success rates, on average, were students between ages 40 to 49 (65%), student ages 30-39 (65%) and students 25 to 29 years old (65%). Students ages 30-39 generally showed a mild upward trend in success rates, from 64% in 2003/04 to 66% in 2007/08.

Figure 3.4: City College Success Rates by Age

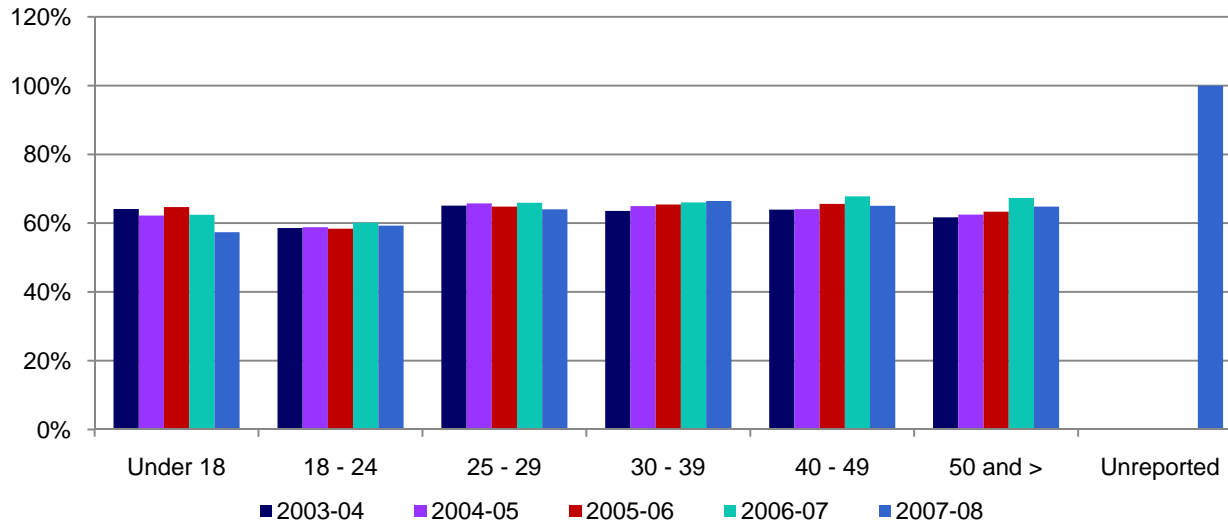


Table 3.4: City College Success Rates by Age

	2003-04	2004-05	2005-06	2006-07	2007-08	College Average 2003-08	All Colleges Average 2003-08
	%	%	%	%	%		
Under 18	64%	62%	65%	62%	57%	62%	60%
18 - 24	59%	59%	58%	60%	59%	59%	62%
25 - 29	65%	66%	65%	66%	64%	65%	68%
30 - 39	64%	65%	65%	66%	66%	65%	70%
40 - 49	64%	64%	66%	68%	65%	65%	71%
50 and >	62%	62%	63%	67%	65%	64%	69%
Unreported	--	--	--	--	100%	100%	65%
Average	61%	62%	62%	63%	62%	62%	65%

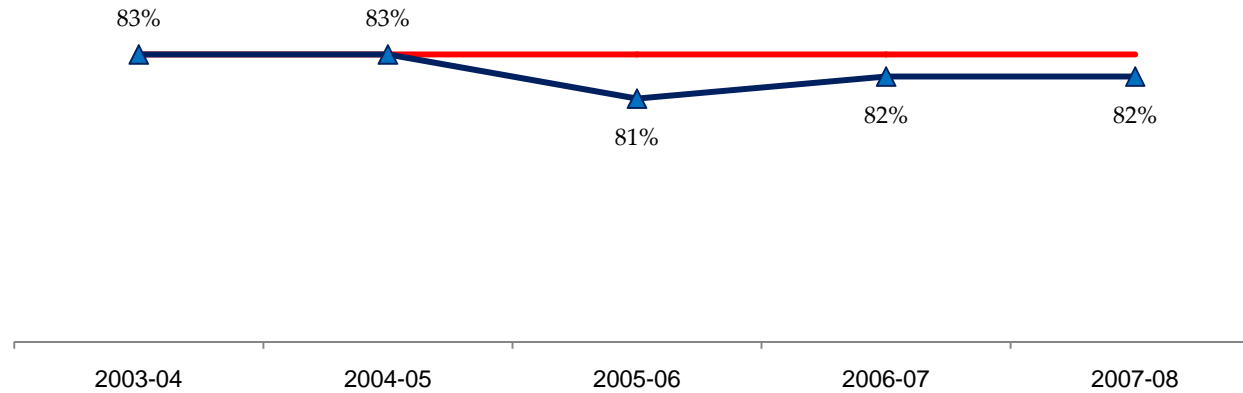
Source: SDCCD Information System

Note: Tutoring classes are excluded.

City College Section III: Student Outcomes (Retention Rates)

Overall Retention Rates: The annual retention rates for City College remained relatively stable from 2003/04 to 2007/08, with an average of 82%. This retention rate average was slightly lower than the average retention rate of all colleges in the district (83%).

Figure 3.5: City College Retention Rates



*Red line marks All Colleges average 2003-08 retention rate.

Table 3.5: City College Retention Rates

	2003-04	2004-05	2005-06	2006-07	2007-08	College Average 2003-08	All Colleges Average 2003-08
	%	%	%	%	%		
Average	83%	83%	81%	82%	82%	82%	83%

Source: SDCCD Information System

Note: Tutoring classes are excluded.

City College Section III: Student Outcomes (Retention Rates)

Retention Rates by Gender: For both male and female students, retention rates showed a downward trend from 2003/04 to 2007/08. On average, male retention rates (83%) were slightly higher compared to their female counterpart (82%)

Figure 3.6: City College Retention Rates by Gender

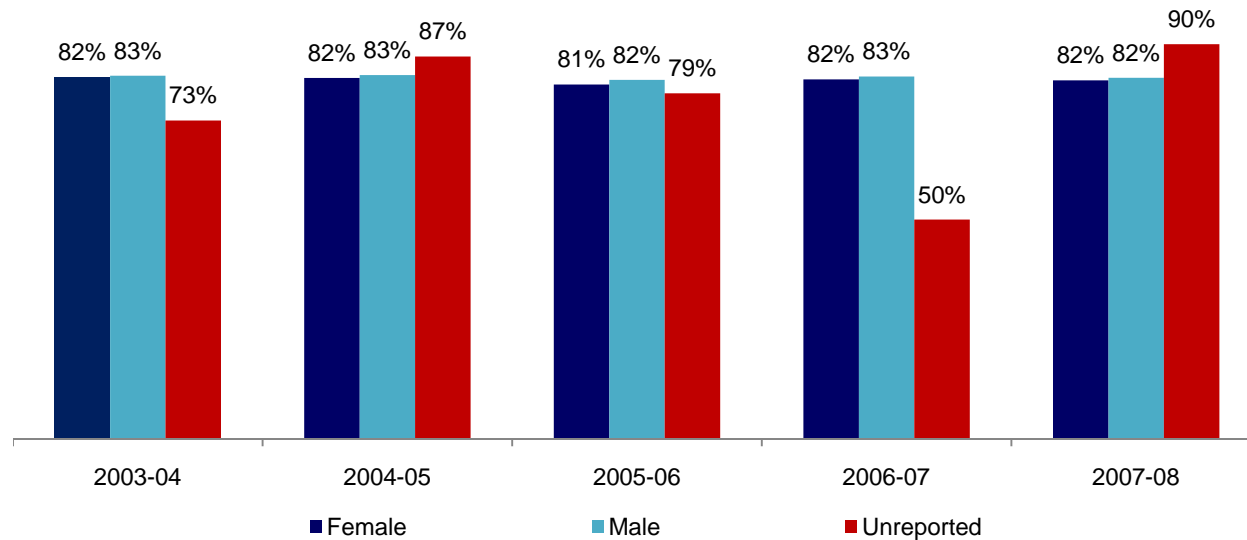


Table 3.6: City College Retention Rates by Gender

	2003-04	2004-05	2005-06	2006-07	2007-08	College Average 2003-08	All Colleges Average 2003-08
	%	%	%	%	%		
Female	82%	82%	81%	82%	82%	82%	83%
Male	83%	83%	82%	83%	82%	83%	83%
Unreported	73%	87%	79%	50%	90%	75%	83%
Average	83%	83%	81%	82%	82%	82%	83%

Source: SDCCD Information System

Note: Tutoring classes are excluded.

City College Section III: Student Outcomes (Retention Rates)

Retention Rates by Ethnicity: Ethnic groups with the highest retention rates on average were Asian/Pacific Islander students (84%), White students (84%) and Filipino students (84%) between 2003/04 and 2007/08. Retention rates for Latino students were lower compared to the average retention rate of all colleges in the district (83%) and equaled the average retention rate of the City College student population (82%). Retention rates of American Indian and African American students were lower compared to the same averages. Retention rates for Asian/Pacific Islander, Filipino and White students exceeded the same averages.

Figure 3.7: City College Retention Rates by Ethnicity

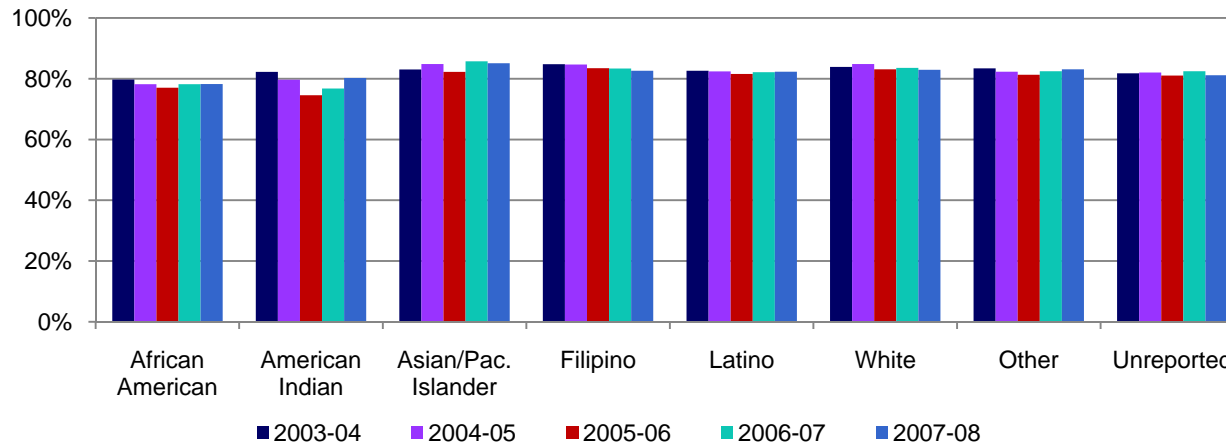


Table 3.7: City College Retention Rates by Ethnicity

	2003-04	2004-05	2005-06	2006-07	2007-08	College Average 2003-08	All Colleges Average 2003-08
	%	%	%	%	%		
African American	80%	78%	77%	78%	78%	78%	79%
American Indian	82%	80%	75%	77%	80%	79%	81%
Asian/Pac. Islander	83%	85%	82%	86%	85%	84%	84%
Filipino	85%	85%	83%	83%	83%	84%	83%
Latino	83%	82%	82%	82%	82%	82%	82%
White	84%	85%	83%	84%	83%	84%	84%
Other	83%	82%	81%	82%	83%	83%	83%
Unreported	82%	82%	81%	82%	81%	82%	82%
Average	83%	83%	81%	82%	82%	82%	83%

Source: SDCCD Information System

Note: Tutoring classes are excluded.

City College Section III: Student Outcomes (Retention Rates)

Retention Rates by Age: From 2003/04 to 2007/08, students under age 18 had the highest retention rates (88%) on average. All the other age cohorts had the same retention rate of 82% on average. Students who were between ages 25-29 generally showed a downward trend in retention rates. Most of the age cohorts at City College showed lower retention rates, on average, compared to the retention rates of the age cohorts within all colleges in the district.

Figure 3.8: City College Retention Rates by Age

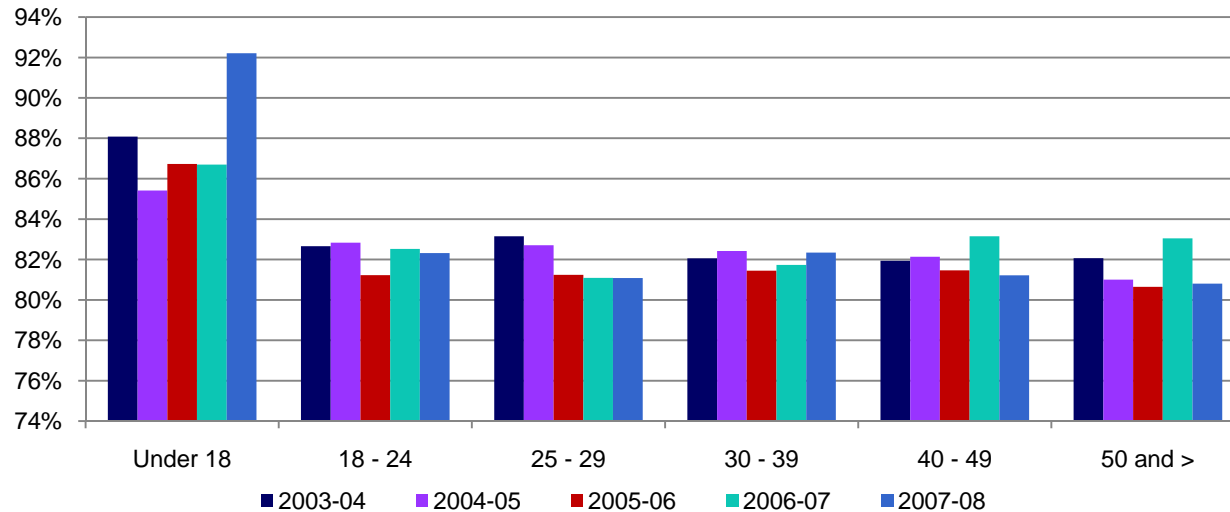


Table 3.8: City College Retention Rates by Age

	2003-04	2004-05	2005-06	2006-07	2007-08	College Average 2003-08	All Colleges Average 2003-08
	%	%	%	%	%		
Under 18	88%	85%	87%	87%	92%	88%	93%
18 - 24	83%	83%	81%	83%	82%	82%	83%
25 - 29	83%	83%	81%	81%	81%	82%	82%
30 - 39	82%	82%	81%	82%	82%	82%	83%
40 - 49	82%	82%	81%	83%	81%	82%	84%
50 and >	82%	81%	81%	83%	81%	82%	84%
Unreported	--	--	--	--	100%	100%	81%
Average	83%	83%	81%	82%	82%	82%	83%

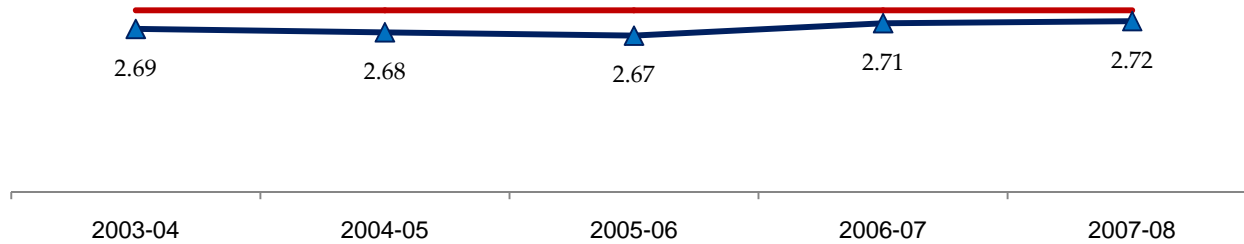
Source: SDCCD Information System

Note: Tutoring classes are excluded.

City College Section III: Student Outcomes (Annual GPA)

Overall Annual GPA: The annual GPA for City College remained relatively stable between 2003/04 and 2007/08, with an average of 2.70. The annual GPA average for City College was slightly lower than the average GPA of all colleges in the district (2.75).

Figure 3.9: City College Annual GPA



*Red line marks All Colleges average 2003-08 GPA.

Table 3.9: City College Annual GPA

	2003-04	2004-05	2005-06	2006-07	2007-08	College Average 2003-08	All Colleges Average 2003-08
	#	#	#	#	#		
Average	2.69	2.68	2.67	2.71	2.72	2.70	2.75

Source: SDCCD Information System

City College Section III: Student Outcomes (Annual GPA)

Annual GPA by Gender: From 2003/04 to 2007/08, male students, on average, had higher GPAs than their female counterpart (2.72 and 2.68, respectively). The annual GPA for female students fell below the annual GPAs for the City College student population and all colleges in the district averages (2.70 and 2.75, respectively). The annual GPA for males exceeded the City College annual GPA average. However, it fell below the annual GPA average of all colleges in the district.

Figure 3.10: City College Annual GPA by Gender

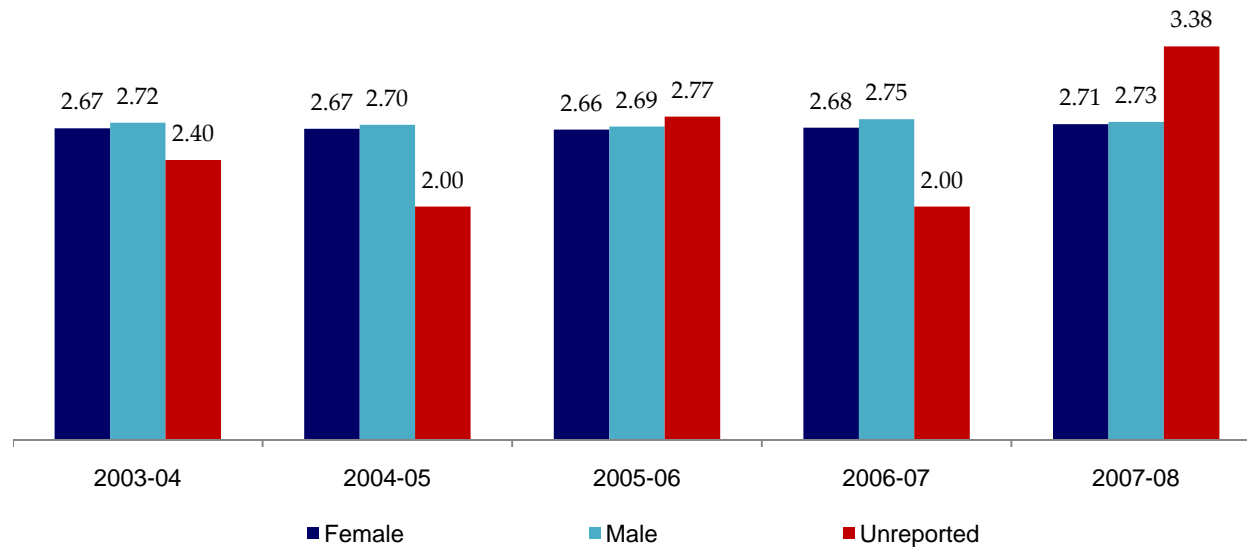


Table 3.10: City College Annual GPA by Gender

	2003-04	2004-05	2005-06	2006-07	2007-08	College Average 2003-08	All Colleges Average 2003-08
	#	#	#	#	#		
Female	2.67	2.67	2.66	2.68	2.71	2.68	2.78
Male	2.72	2.70	2.69	2.75	2.73	2.72	2.71
Unreported	2.40	2.00	2.77	2.00	3.38	2.42	2.49
Average	2.69	2.68	2.67	2.71	2.72	2.70	2.75

Source: SDCCD Information System

City College Section III: Student Outcomes (Annual GPA)

Annual GPA by Ethnicity: White students (3.03) and Asian/Pacific Islander students (2.88) had the highest GPAs on average between 2003/04 and 2007/08. Annual GPAs for African American, American Indian, students categorized as ‘Other’ ethnicities, and Latino students fell below the average annual GPAs for the City College student population and all colleges in the district (2.70 and 2.75, respectively), while GPAs for Asian/Pacific Islander and White students exceeded the same averages. Students categorized as ‘Other’ ethnicities showed an upward trend in annual GPA, from 2.47 in 2003/04 to 2.66 in 2007/08.

Figure 3.11: City College Annual GPA by Ethnicity

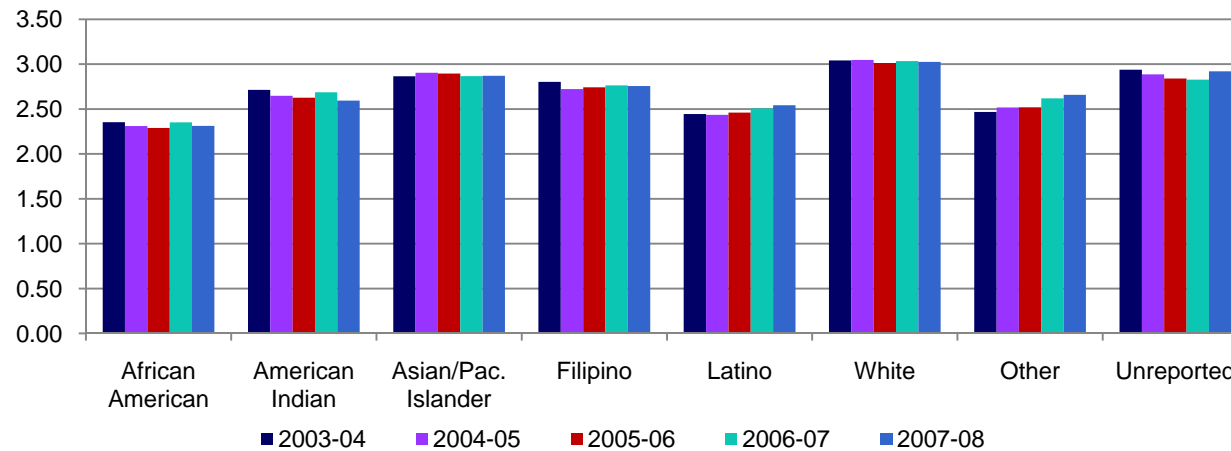


Table 3.11: City Annual GPA by Ethnicity

	2003-04	2004-05	2005-06	2006-07	2007-08	College Average 2003-08	All Colleges Average 2003-08
	#	#	#	#	#		
African American	2.35	2.31	2.29	2.35	2.31	2.32	2.36
American Indian	2.71	2.65	2.63	2.69	2.59	2.65	2.68
Asian/Pac. Islander	2.87	2.91	2.89	2.87	2.87	2.88	2.82
Filipino	2.80	2.72	2.74	2.76	2.76	2.76	2.66
Latino	2.45	2.44	2.46	2.51	2.54	2.48	2.52
White	3.04	3.05	3.01	3.04	3.03	3.03	2.93
Other	2.47	2.52	2.52	2.62	2.66	2.55	2.61
Unreported	2.94	2.89	2.84	2.83	2.92	2.88	2.88
Average	2.69	2.68	2.67	2.71	2.72	2.70	2.75

Source: SDCCD Information System

City College Section III: Student Outcomes (Annual GPA)

Annual GPA by Age: A general trend between 2003/04 and 2007/08 showed, as age increased so did GPA. Students who ranged between under 18 and 24 years old fell below the City College student population and all colleges in the district GPA averages (2.70 and 2.75, respectively). For students between ages 30 and 39, there was an upward trend in annual GPA of 2.90 in 2003/04 to 2.97 in 2007/08.

Figure 3.12: City College Annual GPA by Age

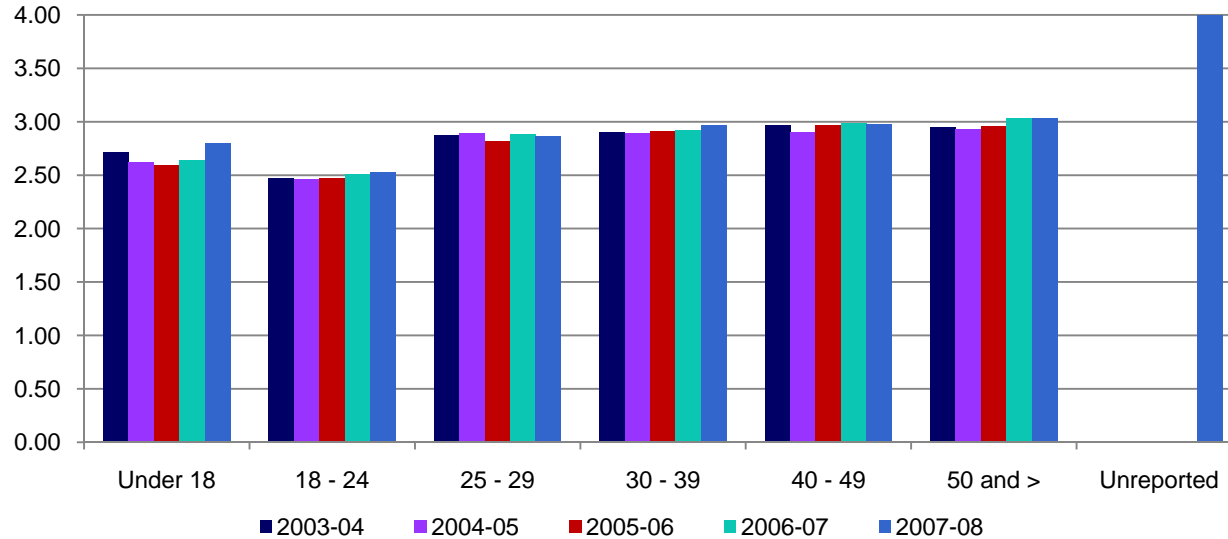


Table 3.12: City College Annual GPA by Age

	2003-04	2004-05	2005-06	2006-07	2007-08	College Average 2003-08	All Colleges Average 2003-08
	#	#	#	#	#		
Under 18	2.72	2.62	2.59	2.64	2.80	2.68	2.90
18 - 24	2.48	2.46	2.47	2.51	2.53	2.49	2.56
25 - 29	2.88	2.89	2.81	2.88	2.86	2.87	2.93
30 - 39	2.90	2.90	2.91	2.93	2.97	2.92	3.07
40 - 49	2.97	2.90	2.97	2.98	2.98	2.96	3.18
50 and >	2.95	2.93	2.96	3.03	3.03	2.98	3.18
Unreported	--	--	--	--	4.00	4.00	3.25
Average	2.69	2.68	2.67	2.71	2.72	2.70	2.75

Source: SDCCD Information System

City College Section III: Student Outcomes (Annual Awards Conferred)

Annual Awards Conferred: Overall, the trends for the type of awards conferred showed a mild downward trend between 2003/04 and 2007/08. Sixty-two percent of the City/ECC student population received associate degrees on average. The number of mini-certificates requiring 18 or fewer units, showed the greatest increase of 47%, from 171 in 2003/04 to 251 in 2007/08. In contrast, the certificates that require 60 units or more decreased 100%, from 15 in 2003/04 to 0 in 2007/08. The number of associate degrees awarded at City/ECC College, on average, was 6% less than the number of associate degrees conferred within all colleges in the district.

Figure 3.13: City College Annual Awards Conferred

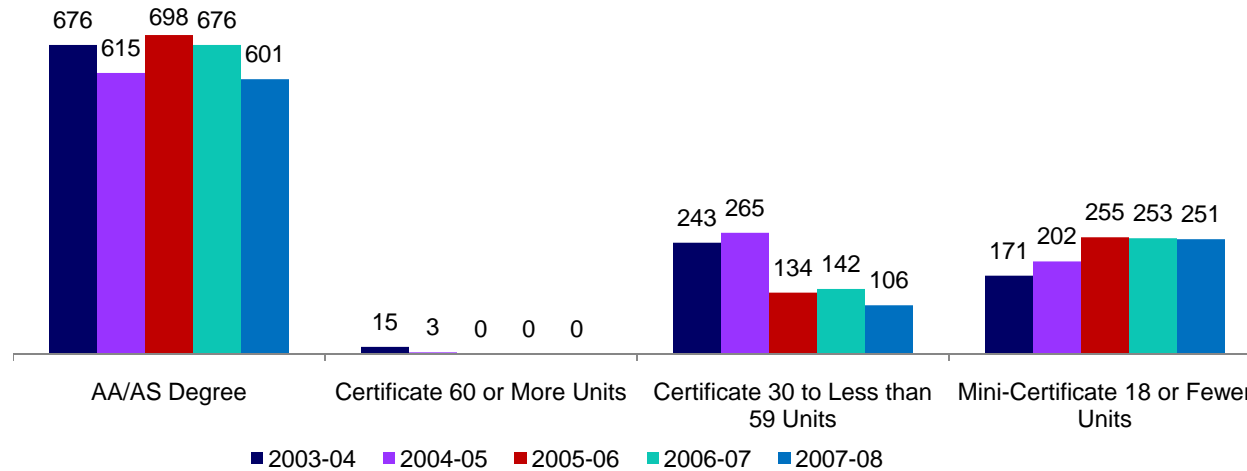


Table 3.13: City College Annual Awards Conferred

	2003-04		2004-05		2005-06		2006-07		2007-08		% Change Fall 03 and 07	College Average Fall 03-07	All Colleges Average Fall 03-07
	#	%	#	%	#	%	#	%	#	%			
AA/AS Degree	676	61%	615	57%	698	64%	676	63%	601	63%	-11%	62%	68%
Certificate 60 or More Units	15	1%	3	0%	0	0%	0	0%	0	0%	-100%	0%	1%
Certificate 30 to Less than 59 Units	243	22%	265	24%	134	12%	142	13%	106	11%	-56%	17%	14%
Mini-Certificate 18 or Fewer Units	171	15%	202	19%	255	23%	253	24%	251	26%	47%	21%	18%
Total	1,105	100%	1,085	100%	1,087	100%	1,071	100%	958	100%	-13%	100%	100%

Source: SDCCD Information System

City College Section III: Student Outcomes (Annual Awards Conferred)

Annual Awards Conferred by Gender: Female students (61%) at City/ECC College received more associate degrees, on average, than their male student (39%) counterpart between 2003/04 and 2007/08. Both males and females students displayed a decreased trend of 11% and 12%, respectively, for the number of associate degrees awarded between 2003/04 and 2007/08. However, for mini-certificates requiring 18 or fewer units, male students showed a 126% increase between 2003/04 and 2007/08. From 2003/04 to 2007/08, male students (39%) earned a disproportionately low number of associate degrees at City/ECC College compared to all colleges in the district (43%). Females exhibited the opposite pattern.

Figure 3.14.1: City College Annual AA/AS Degrees by Gender

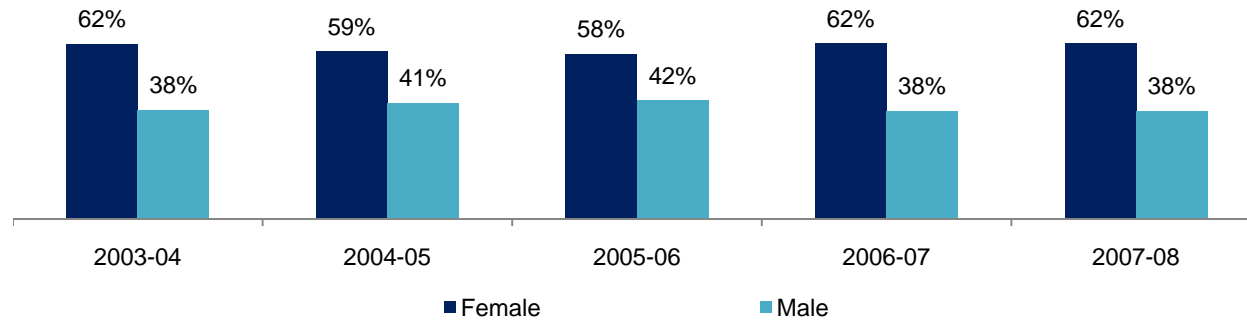
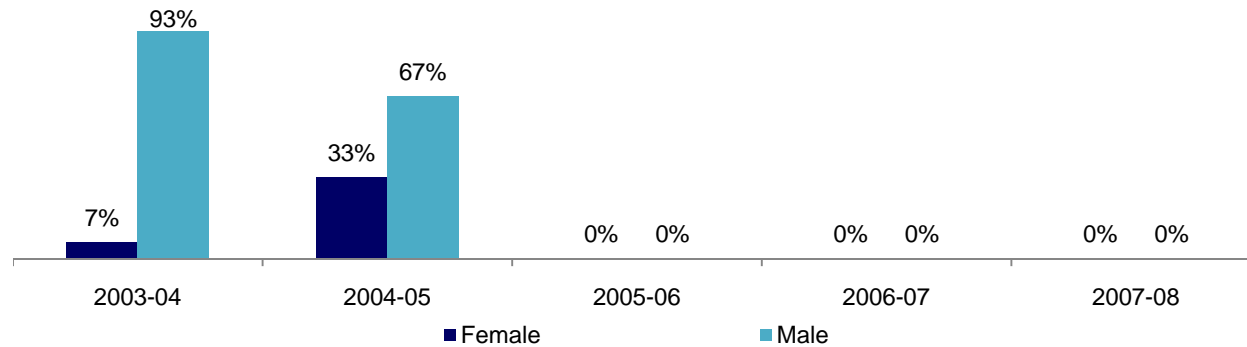


Figure 3.14.2: City College Annual Certificates 60 or More Units by Gender



City College Section III: Student Outcomes (Annual Awards Conferred)

Figure 3.14.3: City College Annual Certificates 30 to Less than 59 Units by Gender

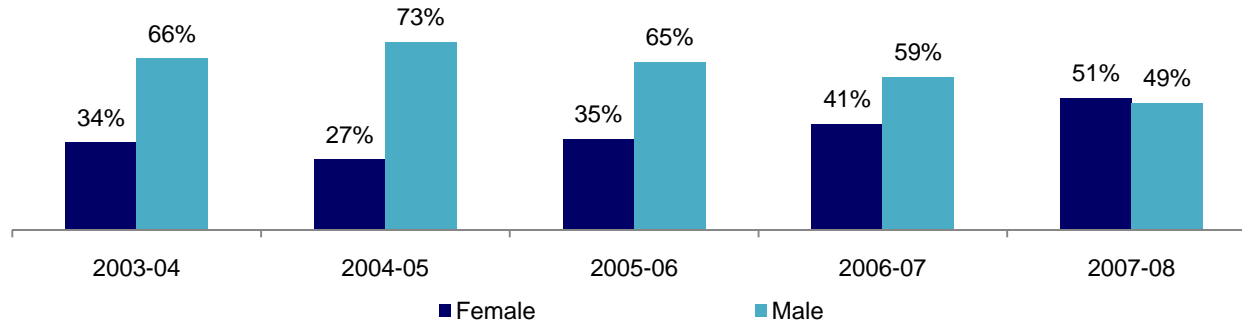
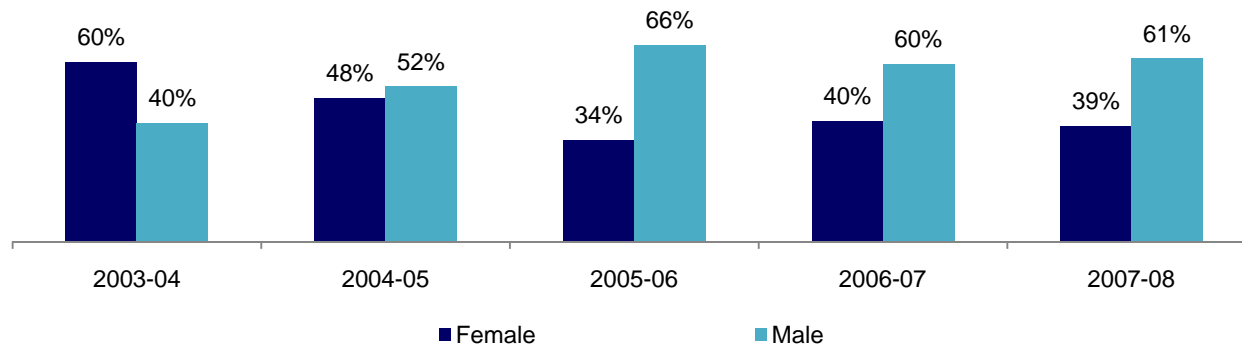


Figure 3.14.4: City College Annual Mini-Certificates 18 or Fewer Units by Gender



City College Section III: Student Outcomes (Annual Awards Conferred)

Table 3.14: City College Annual Awards Conferred by Gender

		2003-04		2004-05		2005-06		2006-07		2007-08		% Change Fall 03 and 07	College Average Fall 03-07	All Colleges Average Fall 03-07
		#	%	#	%	#	%	#	%	#	%			
AA/AS Degree	Female	417	62%	363	59%	406	58%	418	62%	372	62%	-11%	61%	57%
	Male	259	38%	252	41%	292	42%	258	38%	229	38%	-12%	39%	43%
	Total	676	100%	615	100%	698	100%	676	100%	601	100%	-11%	100%	100%
Certificate 60 or More Units	Female	1	7%	1	33%	0	0%	0	0%	0	0%	-100%	11%	50%
	Male	14	93%	2	67%	0	0%	0	0%	0	0%	-100%	89%	50%
	Total	15	100%	3	100%	0	0%	0	0%	0	0%	-100%	100%	100%
Certificate 30 to Less than 59 Units	Female	82	34%	72	27%	47	35%	58	41%	54	51%	-34%	35%	47%
	Male	161	66%	193	73%	87	65%	84	59%	52	49%	-68%	65%	53%
	Total	243	100%	265	100%	134	100%	142	100%	106	100%	-56%	100%	100%
Mini-Certificate 18 or Fewer Units	Female	103	60%	97	48%	87	34%	102	40%	97	39%	-6%	43%	45%
	Male	68	40%	105	52%	168	66%	151	60%	154	61%	126%	57%	55%
	Total	171	100%	202	100%	255	100%	253	100%	251	100%	47%	100%	100%

Source: SDCCD Information System

City College Section III: Student Outcomes (Annual Awards Conferred)

Annual Awards Conferred by Ethnicity: The number of associate degrees conferred increased for Filipino and Latino students (14% and 8%, respectively) between 2003/04 to 2007/08. From 2003/04 to 2007/08, White students received the most awards, followed by Latino students, and then African American students across all award categories. Asian/Pacific Islander students at City/ECC College were consistently underrepresented across all types of awards conferred when compared to all colleges in the district, while Latino students were overrepresented.

Figure 3.15.1: City College Annual AA/AS Degrees by Ethnicity

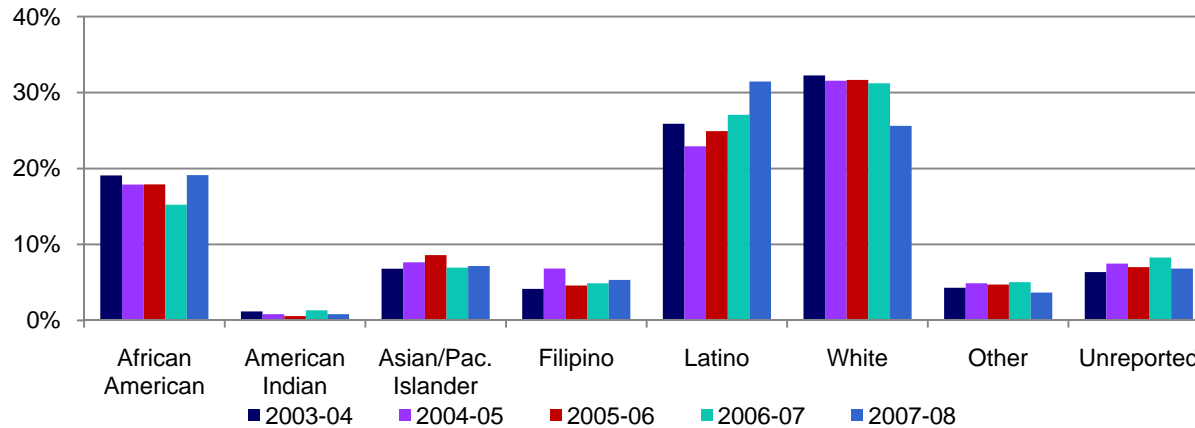
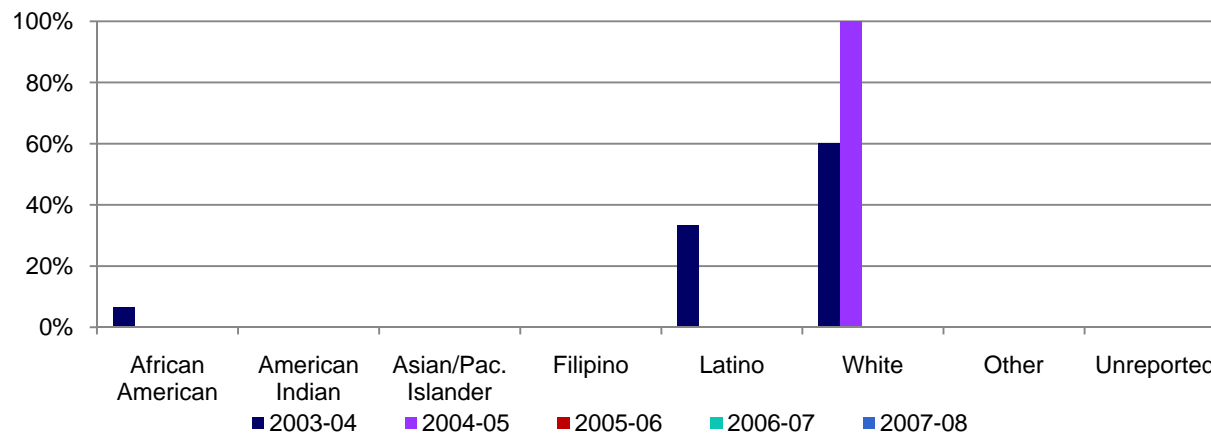


Figure 3.15.2: City College Annual Certificates 60 or More Units by Ethnicity



City College Section III: Student Outcomes (Annual Awards Conferred)

Figure 3.15.3: City College Annual Certificates 30 to Less than 59 Units by Ethnicity

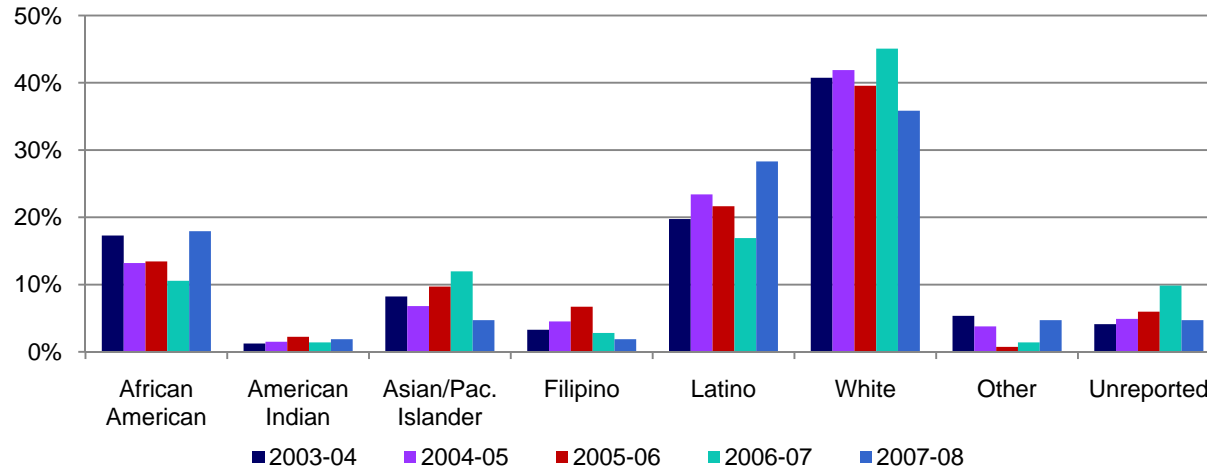
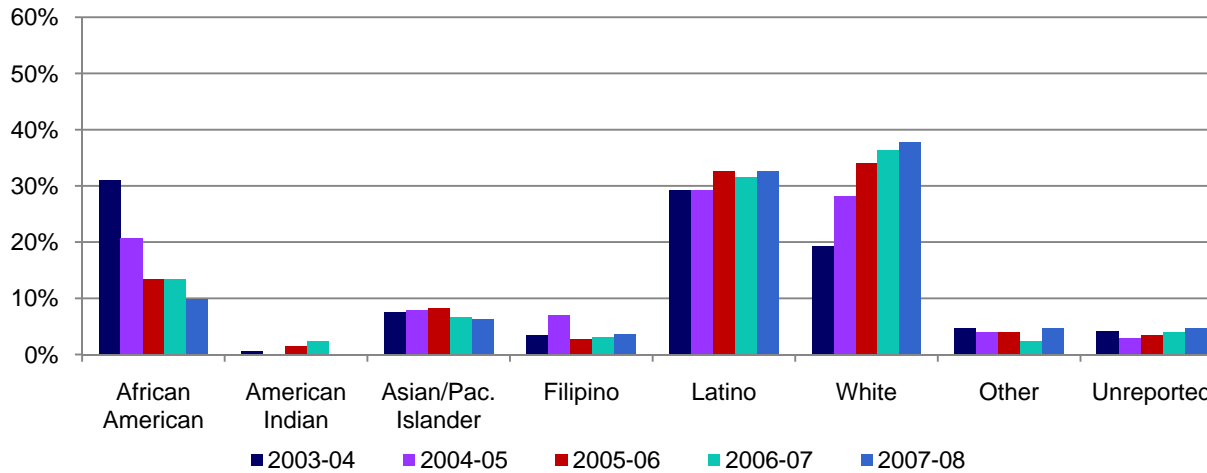


Figure 3.15.4: City College Annual Mini-Certificates 18 or Fewer Units by Ethnicity



City College Section III: Student Outcomes (Annual Awards Conferred)

Table 3.15.1: City College Annual Awards Conferred by Ethnicity

		2003-04		2004-05		2005-06		2006-07		2007-08		% Change Fall 03 and 07	College Average Fall 03-07	All Colleges Average Fall 03-07
		#	%	#	%	#	%	#	%	#	%			
AA/AS Degree	African Amer.	129	19%	110	18%	125	18%	103	15%	115	19%	-11%	18%	9%
	Amer. Indian	8	1%	5	1%	4	1%	9	1%	5	1%	-38%	1%	1%
	Asian/Pac. Islander	46	7%	47	8%	60	9%	47	7%	43	7%	-7%	7%	13%
	Filipino	28	4%	42	7%	32	5%	33	5%	32	5%	14%	5%	7%
	Latino	175	26%	141	23%	174	25%	183	27%	189	31%	8%	26%	17%
	White	218	32%	194	32%	221	32%	211	31%	154	26%	-29%	31%	41%
	Other	29	4%	30	5%	33	5%	34	5%	22	4%	-24%	5%	4%
	Unreported	43	6%	46	7%	49	7%	56	8%	41	7%	-5%	7%	8%
	Total	676	100%	615	100%	698	100%	676	100%	601	100%	-11%	100%	100%
Certificate 60 or More Units	African Amer.	1	7%	0	0%	0	0%	0	0%	0	0%	-100%	6%	5%
	Amer. Indian	0	0%	0	0%	0	0%	0	0%	0	0%	--	0%	0%
	Asian/Pac. Islander	0	0%	0	0%	0	0%	0	0%	0	0%	--	0%	11%
	Filipino	0	0%	0	0%	0	0%	0	0%	0	0%	--	0%	10%
	Latino	5	33%	0	0%	0	0%	0	0%	0	0%	-100%	28%	15%
	White	9	60%	3	100%	0	0%	0	0%	0	0%	-100%	67%	48%
	Other	0	0%	0	0%	0	0%	0	0%	0	0%	--	0%	2%
	Unreported	0	0%	0	0%	0	0%	0	0%	0	0%	--	0%	9%
	Total	15	100%	3	100%	0	0%	0	0%	0	0%	-100%	100%	100%

Source: SDCCD Information System

City College Section III: Student Outcomes (Annual Awards Conferred)

Table 3.15.2: City College Annual Awards Conferred by Ethnicity

		2003-04		2004-05		2005-06		2006-07		2007-08		% Change Fall 03 and 07	College Average Fall 03-07	All Colleges Average Fall 03-07
		#	%	#	%	#	%	#	%	#	%			
Certificate 30 to Less than 59 Units	African Amer.	42	17%	35	13%	18	13%	15	11%	19	18%	-55%	14%	9%
	Amer. Indian	3	1%	4	2%	3	2%	2	1%	2	2%	-33%	2%	1%
	Asian/Pac. Islander	20	8%	18	7%	13	10%	17	12%	5	5%	-75%	8%	13%
	Filipino	8	3%	12	5%	9	7%	4	3%	2	2%	-75%	4%	5%
	Latino	48	20%	62	23%	29	22%	24	17%	30	28%	-38%	22%	17%
	White	99	41%	111	42%	53	40%	64	45%	38	36%	-62%	41%	45%
	Other	13	5%	10	4%	1	1%	2	1%	5	5%	-62%	3%	3%
	Unreported	10	4%	13	5%	8	6%	14	10%	5	5%	-50%	6%	7%
	Total	243	100%	265	100%	134	100%	142	100%	106	100%	-56%	100%	100%
Mini-Certificate 18 or Fewer Units	African Amer.	53	31%	42	21%	34	13%	34	13%	25	10%	-53%	17%	9%
	Amer. Indian	1	1%	0	0%	4	2%	6	2%	0	0%	-100%	1%	1%
	Asian/Pac. Islander	13	8%	16	8%	21	8%	17	7%	16	6%	23%	7%	13%
	Filipino	6	4%	14	7%	7	3%	8	3%	9	4%	50%	4%	5%
	Latino	50	29%	59	29%	83	33%	80	32%	82	33%	64%	31%	21%
	White	33	19%	57	28%	87	34%	92	36%	95	38%	188%	32%	40%
	Other	8	5%	8	4%	10	4%	6	2%	12	5%	50%	4%	3%
	Unreported	7	4%	6	3%	9	4%	10	4%	12	5%	71%	4%	6%
	Total	171	100%	202	100%	255	100%	253	100%	251	100%	47%	100%	100%

Source: SDCCD Information System

City College Section III: Student Outcomes (Annual Awards Conferred)

Annual Awards Conferred by Age: On average, students between ages 30 and 39 years old consistently displayed a general trend of receiving the highest amount of awards within each category across all award categories. Furthermore, the same age cohort of students was overrepresented in the number of awards received at City/ECC College when compared to all colleges in the district. However, students ages 18-24 showed the greatest disparity in the number of awards received between 2003/04 and 2007/08.

Figure 3.16.1: City College Annual AA/AS Degrees by Age

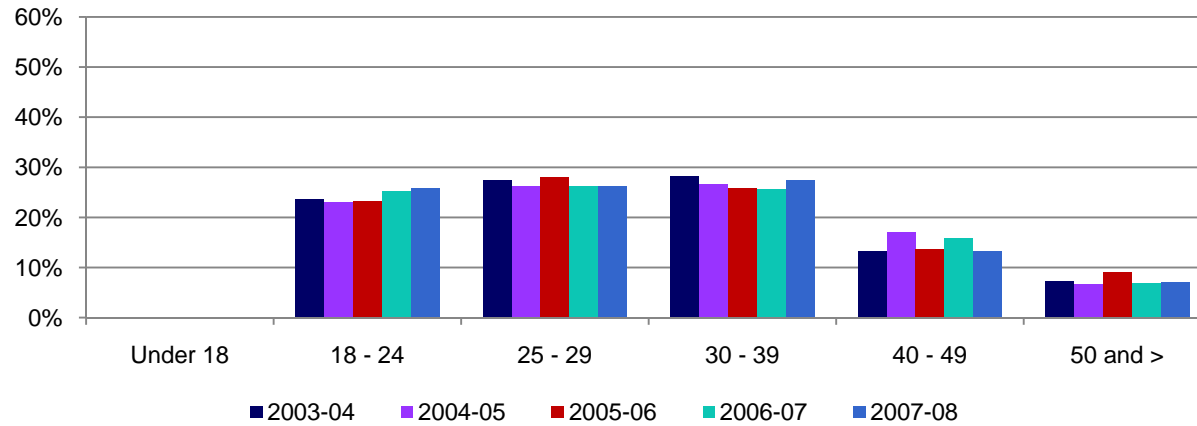
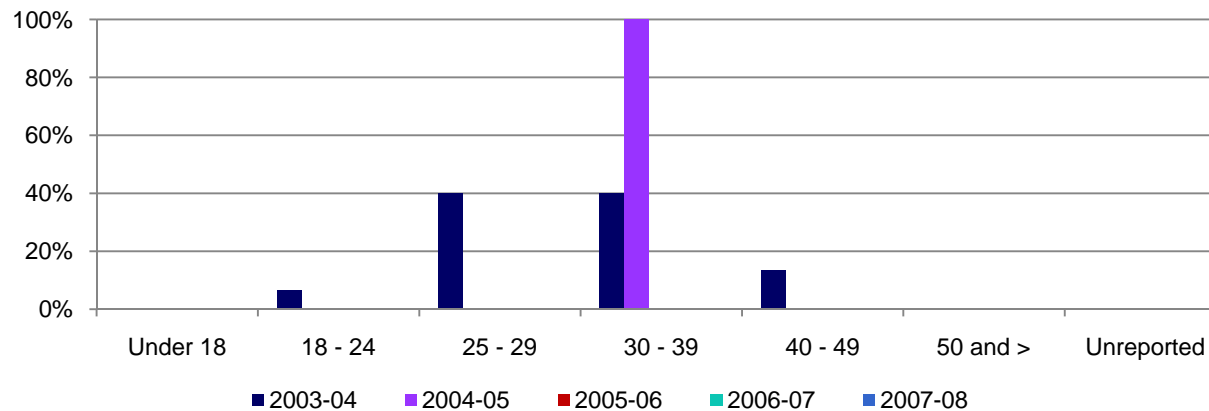


Figure 3.16.2: City College Annual Certificates 60 or More Units by Age



City College Section III: Student Outcomes (Annual Awards Conferred)

Figure 3.16.3: City College Annual Certificates 30 to Less than 59 Units by Age

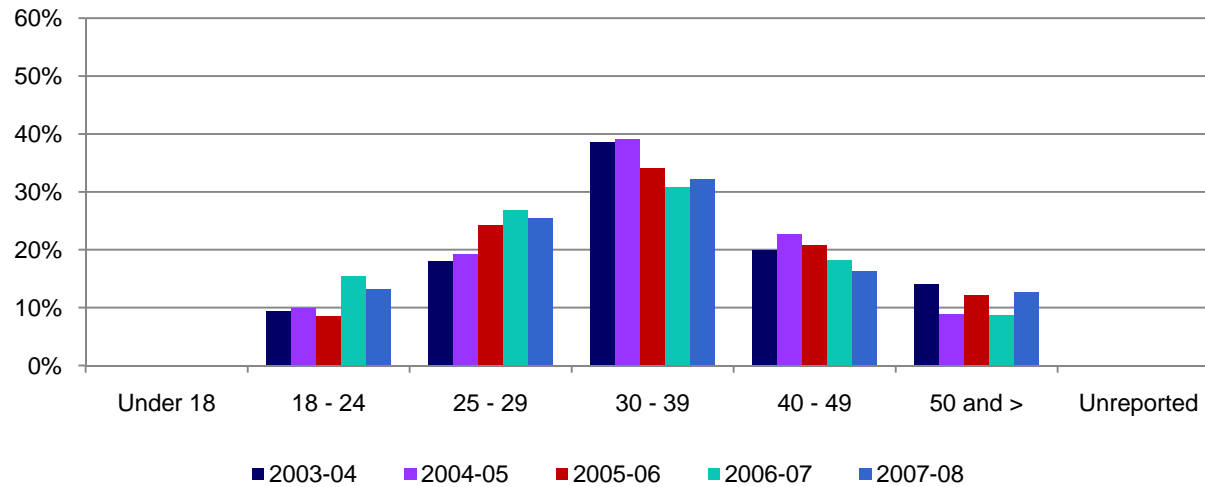
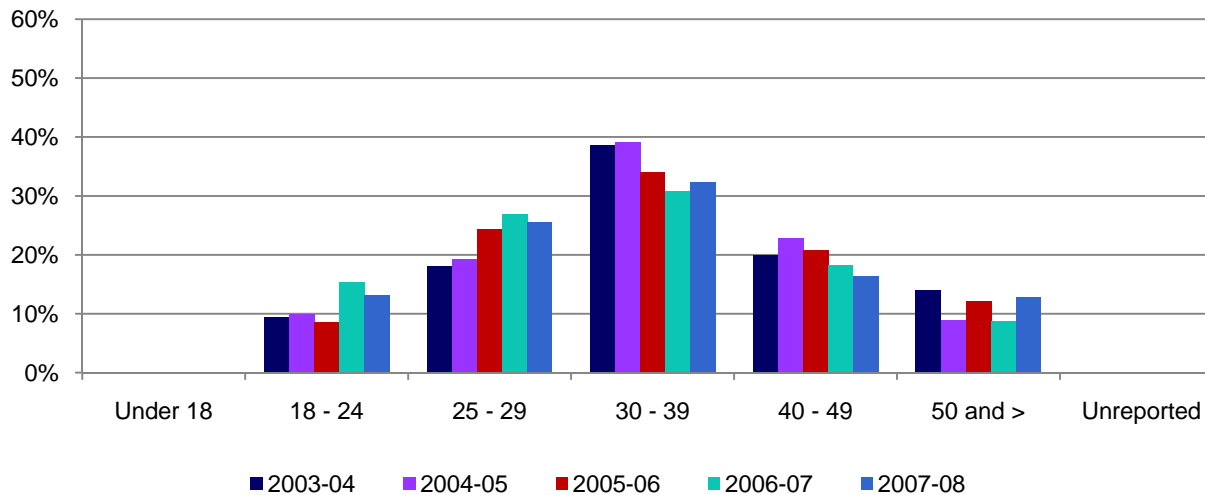


Figure 3.16.4: City College Annual Mini-Certificates 18 or Fewer Units by Age



City College Section III: Student Outcomes (Annual Awards Conferred)

Table 3.16.1: City College Annual Awards Conferred by Age

		2003-04		2004-05		2005-06		2006-07		2007-08		% Change Fall 03 and 07	College Average Fall 03-07	All Colleges Average Fall 03-07
		#	%	#	%	#	%	#	%	#	%			
AA/AS Degree	Under 18	0	0%	1	0%	0	0%	0	0%	0	0%	--	0%	0%
	18 - 24	160	24%	142	23%	163	23%	171	25%	155	26%	-3%	24%	40%
	25 - 29	186	28%	162	26%	196	28%	177	26%	158	26%	-15%	27%	26%
	30 - 39	191	28%	164	27%	181	26%	173	26%	165	27%	-14%	27%	20%
	40 - 49	90	13%	105	17%	95	14%	108	16%	80	13%	-11%	15%	10%
	50 and >	49	7%	41	7%	63	9%	47	7%	43	7%	-12%	7%	5%
	Unreported	0	0%	0	0%	0	0%	0	0%	0	0%	--	0%	0%
	Total	676	100%	615	100%	698	100%	676	100%	601	100%	-11%	100%	100%
Certificate 60 or More Units	Under 18	0	0%	0	0%	0	0%	0	0%	0	0%	--	0%	0%
	18 - 24	1	7%	0	0%	0	0%	0	0%	0	0%	-100%	6%	16%
	25 - 29	6	40%	0	0%	0	0%	0	0%	0	0%	-100%	33%	29%
	30 - 39	6	40%	3	100%	0	0%	0	0%	0	0%	-100%	50%	37%
	40 - 49	2	13%	0	0%	0	0%	0	0%	0	0%	-100%	11%	15%
	50 and >	0	0%	0	0%	0	0%	0	0%	0	0%	--	0%	4%
	Unreported	0	0%	0	0%	0	0%	0	0%	0	0%	--	0%	0%
	Total	15	100%	3	100%	0	0%	0	0%	0	0%	-100%	100%	100%

Source: SDCCD Information System

City College Section III: Student Outcomes (Annual Awards Conferred)

Table 3.16.2: City College Annual Awards Conferred by Age

		2003-04		2004-05		2005-06		2006-07		2007-08		% Change Fall 03 and 07	College Average Fall 03-07	All Colleges Average Fall 03-07
		#	%	#	%	#	%	#	%	#	%			
Certificate 30 to Less than 59 Units	Under 18	0	0%	0	0%	0	0%	0	0%	0	0%	--	0%	0%
	18 - 24	19	8%	31	12%	7	5%	18	13%	9	8%	-53%	9%	17%
	25 - 29	49	20%	53	20%	18	13%	27	19%	13	12%	-73%	18%	22%
	30 - 39	77	32%	81	31%	40	30%	34	24%	28	26%	-64%	29%	30%
	40 - 49	66	27%	64	24%	45	34%	42	30%	37	35%	-44%	29%	21%
	50 and >	32	13%	36	14%	24	18%	21	15%	19	18%	-41%	15%	10%
	Unreported	0	0%	0	0%	0	0%	0	0%	0	0%	--	0%	0%
	Total	243	100%	265	100%	134	100%	142	100%	106	100%	-56%	100%	100%
Mini-Certificate 18 or Fewer Units	Under 18	0	0%	0	0%	0	0%	0	0%	0	0%	--	0%	0%
	18 - 24	16	9%	20	10%	22	9%	39	15%	33	13%	106%	11%	22%
	25 - 29	31	18%	39	19%	62	24%	68	27%	64	25%	106%	23%	24%
	30 - 39	66	39%	79	39%	87	34%	78	31%	81	32%	23%	35%	27%
	40 - 49	34	20%	46	23%	53	21%	46	18%	41	16%	21%	19%	17%
	50 and >	24	14%	18	9%	31	12%	22	9%	32	13%	33%	11%	9%
	Unreported	0	0%	0	0%	0	0%	0	0%	0	0%	--	0%	0%
	Total	171	100%	202	100%	255	100%	253	100%	251	100%	47%	100%	100%

Source: SDCCD Information System

City College Section III: Student Outcomes (Annual Transfers)

Annual Transfers: The annual transfer volume for City College increased 94%, from 2,457 in 2003/04 to 4,769 in 2007/08.

Figure 3.17: City College Annual Transfers

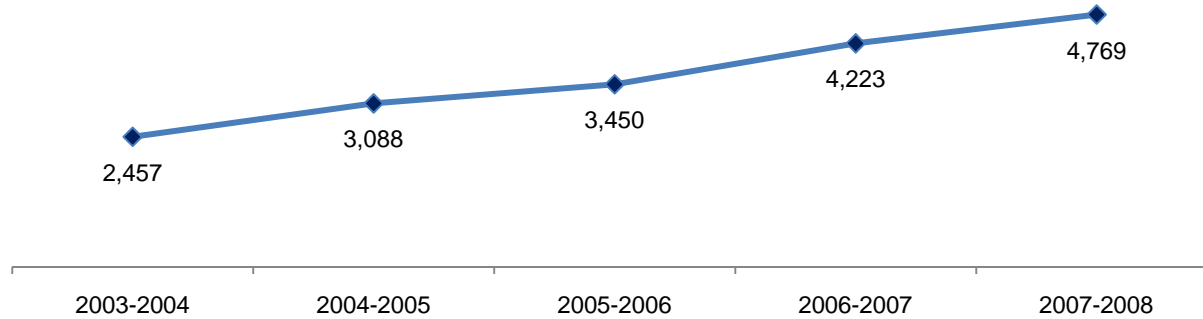


Table 3.17: City College Annual Transfers

	2003-2004	2004-2005	2005-2006	2006-2007	2007-2008	% Change 2003-04 and 2007-08
Total	2,457	3,088	3,450	4,223	4,769	94%

Source: SDCCD Information System

City College Section III: Student Outcomes (Annual Transfers)

Annual Transfers by Gender: From 2003/04 to 2007/08, female students (60%) had a higher transfer volume, on average, compared to their male student counterpart (40%). The transfer volume for both male and female students increased between 2003/04 and 2007/08 (88% and 98%, respectively).

Figure 3.18: City College Annual Transfers by Gender

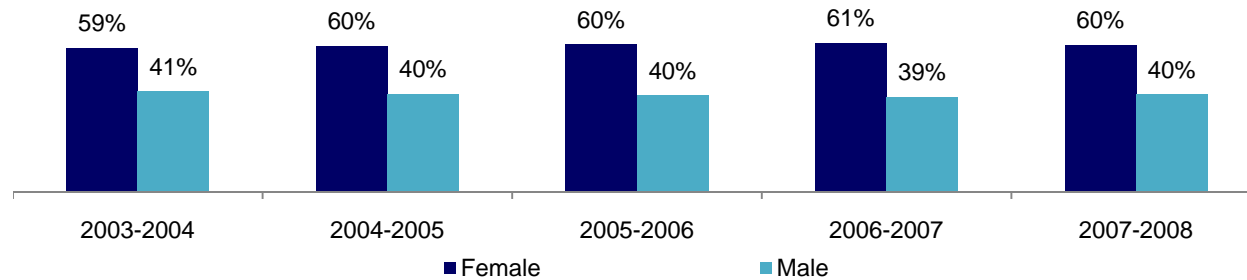


Figure 3.18: City College Annual Transfers by Gender

	2003-2004		2004-2005		2005-2006		2006-2007		2007-2008		% Change 03/04 and 07/08	College Average 03/04- 07/08	Districtwide Average 03/04-07/08
	#	%	#	%	#	%	#	%	#	%			
Female	1,447	59%	1,844	60%	2,085	60%	2,579	61%	2,866	60%	98%	60%	57%
Male	1,010	41%	1,242	40%	1,363	40%	1,643	39%	1,903	40%	88%	40%	43%
Unreported	0	0%	2	0%	2	0%	1	0%	0	0%	0%	0%	0%
Total	2,457	100%	3,088	100%	3,450	100%	4,223	100%	4,769	100%	94%	100%	100%

Source: SDCCD Information System

City College Section III: Student Outcomes (Annual Transfers)

Annual Transfers by Ethnicity: White students accounted for approximately one-third of those who transferred from City College, Latino students (25%) accounted for one-quarter of those who transferred from City College and African American students (10%) accounted for one-tenth of those who transferred from City College between 2003/04 and 2007/08. All the ethnic groups displayed an increased trend in transfer volume. Latino students increased the most by 151%, from 535 in 2003/04 to 1,343 in 2007/08.

Figure 3.19: City College Annual Transfers by Ethnicity

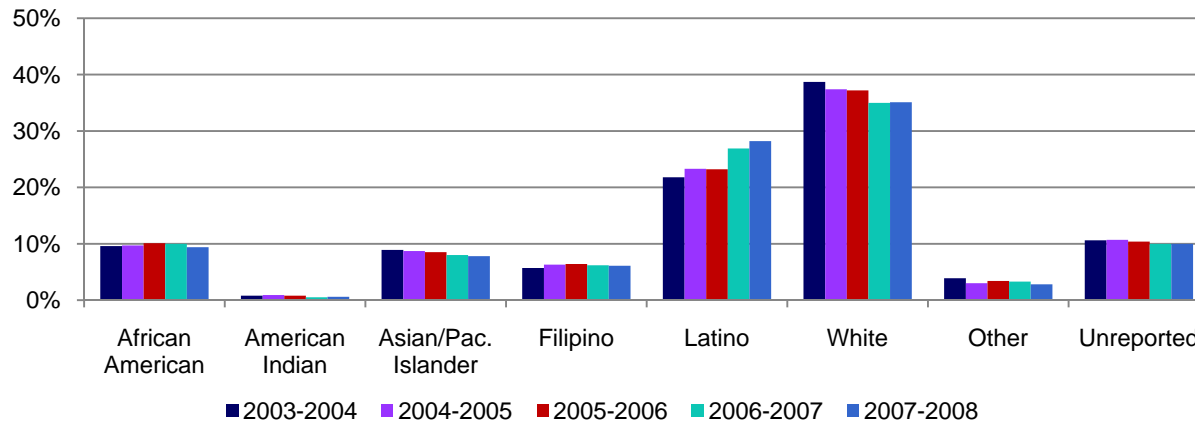


Table 3.19: City College Annual Transfers by Ethnicity

	2003-2004		2004-2005		2005-2006		2006-2007		2007-2008		% Change 03/04 and 07/08	College Average 03/04- 07/08	Districtwide Average 03/04-07/08
	#	%	#	%	#	%	#	%	#	%			
African American	235	10%	300	10%	348	10%	421	10%	447	9%	90%	10%	6%
American Indian	19	1%	28	1%	27	1%	22	1%	30	1%	58%	1%	1%
Asian/Pac. Islander	219	9%	269	9%	294	9%	336	8%	372	8%	70%	8%	15%
Filipino	139	6%	193	6%	221	6%	263	6%	293	6%	111%	6%	6%
Latino	535	22%	721	23%	799	23%	1,138	27%	1,343	28%	151%	25%	16%
White	952	39%	1,155	37%	1,285	37%	1,480	35%	1,673	35%	76%	36%	42%
Other	97	4%	92	3%	118	3%	140	3%	135	3%	0%	3%	3%
Unreported	261	11%	330	11%	358	10%	423	10%	476	10%	0%	10%	11%
Total	2,457	100%	3,088	100%	3,450	100%	4,223	100%	4,769	100%	0%	100%	100%

Source: SDCCD Information System

City College Section III: Student Outcomes (Annual Transfers)

Annual Transfers by Age: The age cohorts with the highest transfer volume on average were students ages 18-24 years old (69%), students between ages 25 and 29 years old (17%) and students ages 30 to 39 years old (10%) between 2003/04 and 2007/08. All the age cohorts displayed an increased trend in transfer volume with students under age 18 increasing the most by 126%, from 19 in 2003/04 to 43 in 2007/08.

Figure 3.20: City College Annual Transfers by Age

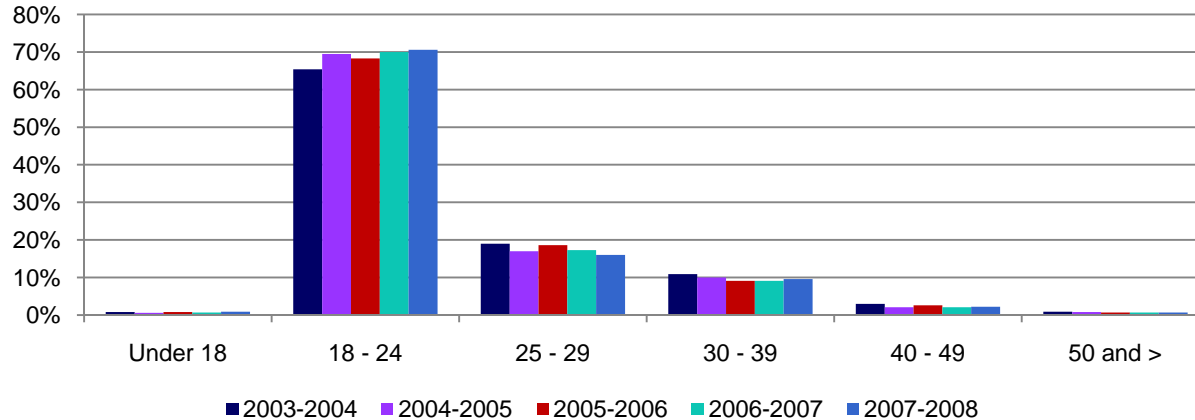


Table 3.20: City College Annual Awards by Age

	2003-2004		2004-2005		2005-2006		2006-2007		2007-2008		% Change 03/04 and 07/08	College Average 03/04- 07/08	Districtwide Average 03/04-07/08
	#	%	#	%	#	%	#	%	#	%			
Under 18	19	1%	18	1%	26	1%	30	1%	43	1%	126%	1%	1%
18 - 24	1,607	65%	2,146	70%	2,357	68%	2,958	70%	3,366	71%	109%	69%	69%
25 - 29	467	19%	526	17%	641	19%	731	17%	765	16%	64%	17%	18%
30 - 39	267	11%	309	10%	314	9%	386	9%	457	10%	71%	10%	9%
40 - 49	74	3%	65	2%	89	3%	87	2%	107	2%	45%	2%	2%
50 and >	23	1%	24	1%	23	1%	31	1%	31	1%	35%	1%	1%
Unreported	0	0%	0	0%	0	0%	0	0%	0	0%	0%	0%	0%
Total	2,457	100%	3,088	100%	3,450	100%	4,223	100%	4,769	100%	94%	100%	100%

Source: SDCCD Information System

City College Section III: Student Outcomes (Annual Transfers)

Annual Transfers by CSU/UC: Of all the students who transferred to a CSU/UC from City College, 88% transferred into the California State University (CSU) system and 12% transferred into the University of California (UC) system. Both the CSU and UC systems saw an increased trend in the number of students that transferred from City College (100% and 69%, respectively) to their respective systems between 2003/04 and 2007/08.

Figure 3.21: City College Annual Transfers by CSU/UC

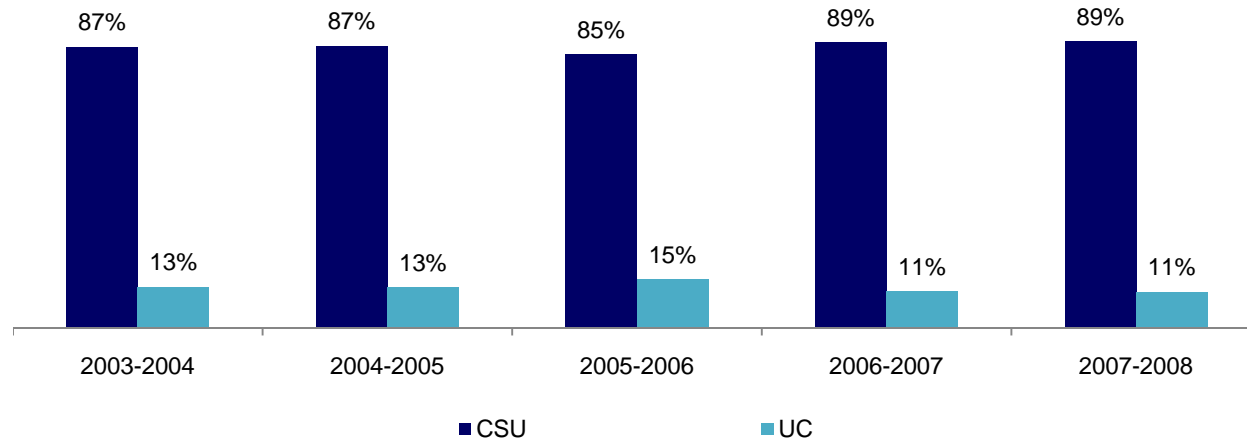


Table 3.21: City College Annual Awards by CSU/UC

	2003-2004		2004-2005		2005-2006		2006-2007		2007-2008		% Change 03/04 and 07/08	College Average 03/04- 07/08	Districtwide Average 03/04-07/08
	#	%	#	%	#	%	#	%	#	%			
CSU	1,453	87%	1,832	87%	2,048	85%	2,631	89%	2,902	89%	100%	88%	66%
UC	213	13%	265	13%	365	15%	340	11%	361	11%	69%	12%	35%
Total	1,666	100%	2,097	100%	2,413	100%	2,971	100%	3,263	100%	96%	100%	100%

Source: SDCCD Information System

City College Section III: Student Outcomes (Annual Transfers)

Annual Transfers by Institution Type: Of all the students who transferred from City College, 22% transferred to a private institution and 78% transferred to a public institution. Both public and private institutions saw an increased trend in the number of students that transferred from City College (93% and 96%, respectively) to their respective institutions between 2003/04 and 2007/08.

Figure 3.22: City College Annual Transfers by Institution Type

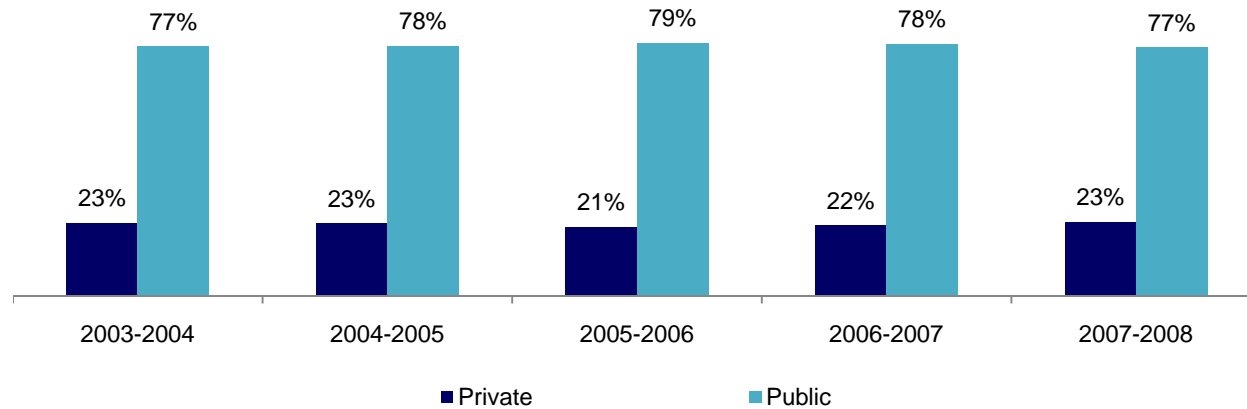


Table 3.22: City College Annual Awards by Institution Type

	2003-2004		2004-2005		2005-2006		2006-2007		2007-2008		% Change 03/04 and 07/08	College Average 03/04- 07/08	Districtwide Average 03/04-07/08
	#	%	#	%	#	%	#	%	#	%			
Private	555	23%	695	23%	738	21%	926	22%	1,090	23%	96%	22%	25%
Public	1,902	77%	2,393	78%	2,712	79%	3,297	78%	3,679	77%	93%	78%	75%
Total	2,457	100%	3,088	100%	3,450	100%	4,223	100%	4,769	100%	94%	100%	100%

Source: SDCCD Information System

City College Section III: Student Outcomes (Annual Transfers)

Annual Transfers by Institution Location: Of all the students who transferred from City College, 79% transferred to an In-State institution and 21% transferred to an Out-of-State institution. Both In-State and Out-of-State institutions saw an increased trend in the number of students that transferred from City College (104% and 61%, respectively) to their respective institutions between 2003/04 and 2007/08.

Figure 3.23: City College Annual Transfers by Institution Location

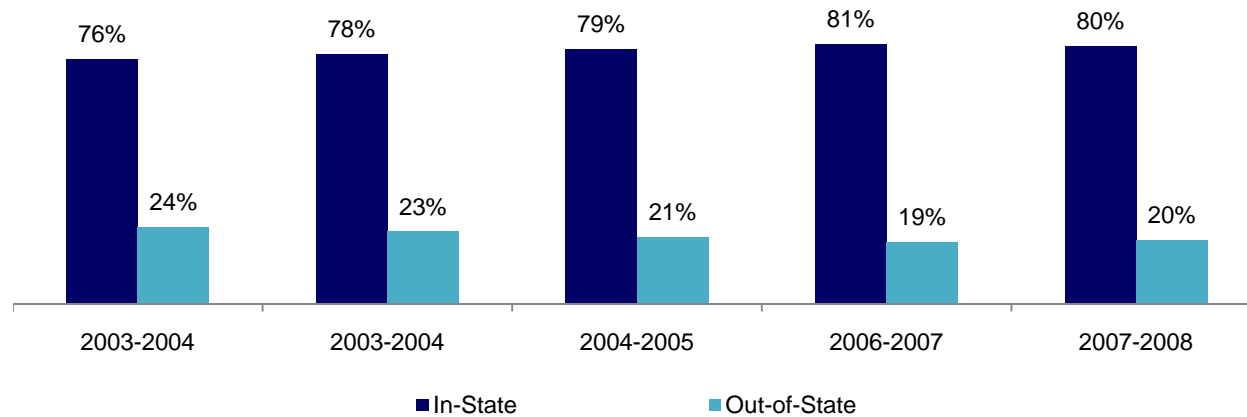


Table 3.23: City College Annual Awards by Institution Location

	2003-2004		2004-2005		2005-2006		2006-2007		2007-2008		% Change 03/04 and 07/08	College Average 03/04- 07/08	Districtwide Average 03/04-07/08
	#	%	#	%	#	%	#	%	#	%			
In-State	1,871	76%	2,392	78%	2,734	79%	3,408	81%	3,825	80%	104%	79%	79%
Out-of-State	586	24%	696	23%	716	21%	815	19%	944	20%	61%	21%	21%
Total	2,457	100%	3,088	100%	3,450	100%	4,223	100%	4,769	100%	94%	100%	100%

Source: SDCCD Information System

City College Section IV: Productivity and Efficiency

This section of the Fact Book contains information on 1 productivity and efficiency measures. The following describes in detail each of the measures:

- 1) FTES. The first measure reported in this section is a measure of productivity. FTES is a calculation of full-time equivalent students and is based on the total number of student contact hours.
- 2) Enrollments. The second measure in this section of the report is also a measure of productivity. Enrollments are duplicated counts of students. The measure counts all of the classes a single student is enrolled in compared to unduplicated headcount which counts the student only once regardless of the number of classes he/she may be enrolled in.
- 3) Fill Rates. The third measure reported in this section is a measure of efficiency. Fill rates are a calculation of the total enrollment capacity of a class over the total enrollments in the class.

City College Section IV: Productivity and Efficiency

Annual FTES: Between 2003/04 and 2007/08, City College had a 12% increase in FTES. For credit FTES, there was an increase by 13% from 9,567 in 2003/04 to 10,854 in 2007/08. College non-credit FTES has seen a 55% decrease between 2003/04 to 2007/08.

Figure 4.1: City College Annual FTES

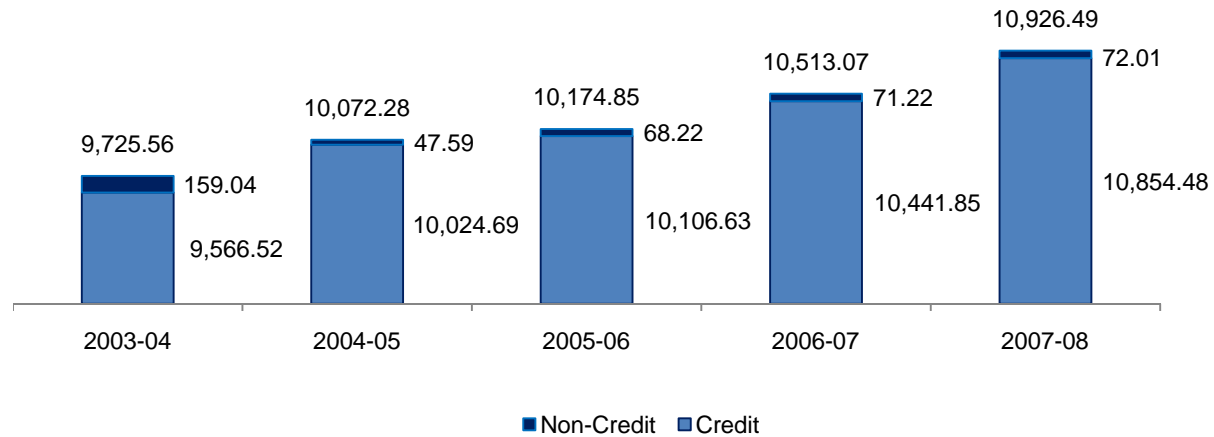


Table 4.1: City College Annual FTES

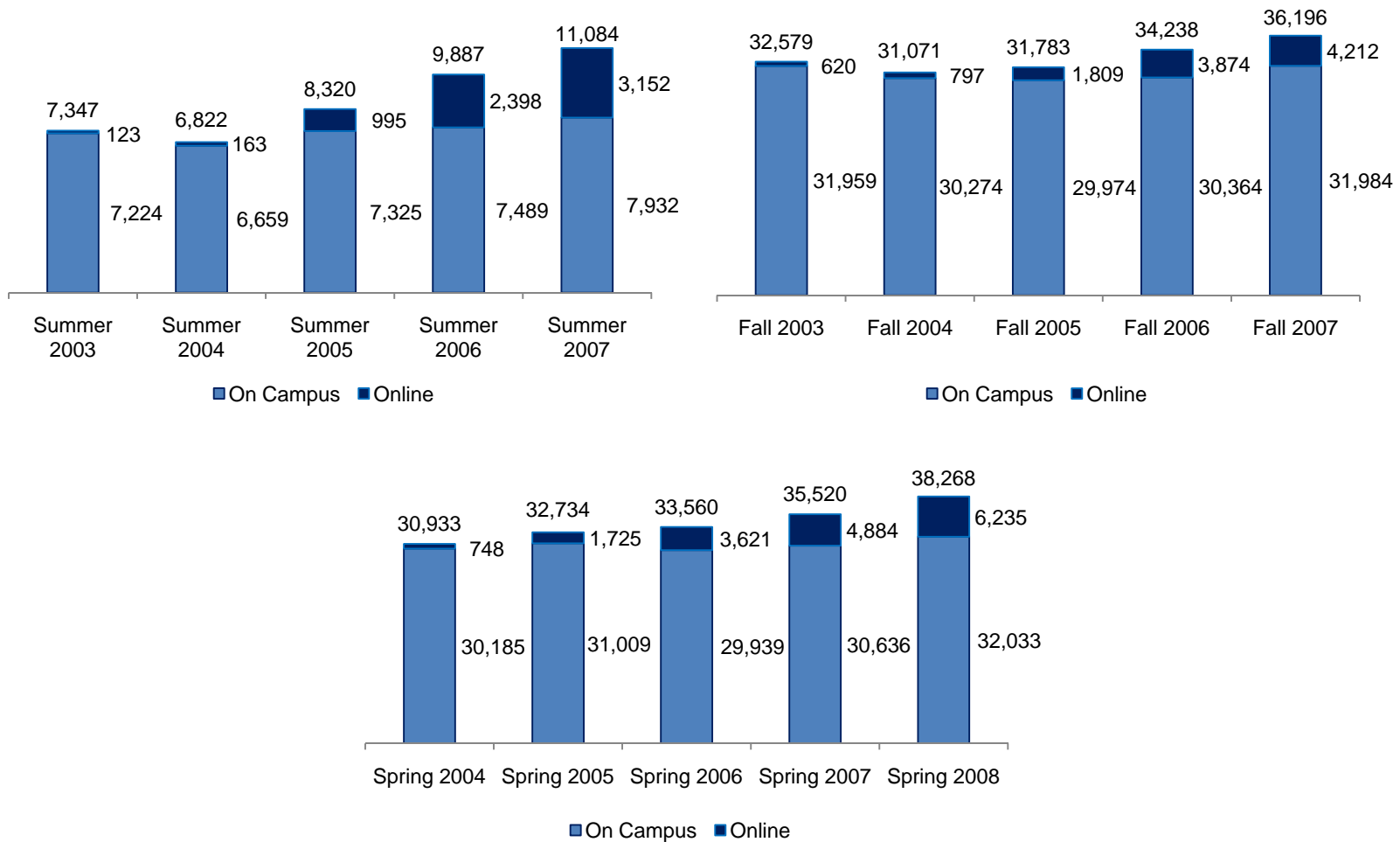
	2003-04	2004-05	2005-06	2006-07	2007-08
Credit	9,566.52	10,024.69	10,106.63	10,441.85	10,854.48
Non-Credit	159.04	47.59	68.22	71.22	72.01
Total	9,725.56	10,072.28	10,174.85	10,513.07	10,926.49

Source: SDCCD Information System

City College Section IV: Productivity and Efficiency

Enrollments: The enrollment trend for the online mode of instruction increased tremendously for summer (246%), fall (579%) and spring (734%) cohorts between 2003/04 and 2007/08. The on campus mode of instruction enrollment trend also increased for the summer (10%), fall (<.01%) and spring (6%) cohorts between 2003/04 and 2007/08. The online mode of instruction enrollment trend for all colleges in the district was consistent with the online mode of instruction enrollment trend for City College.

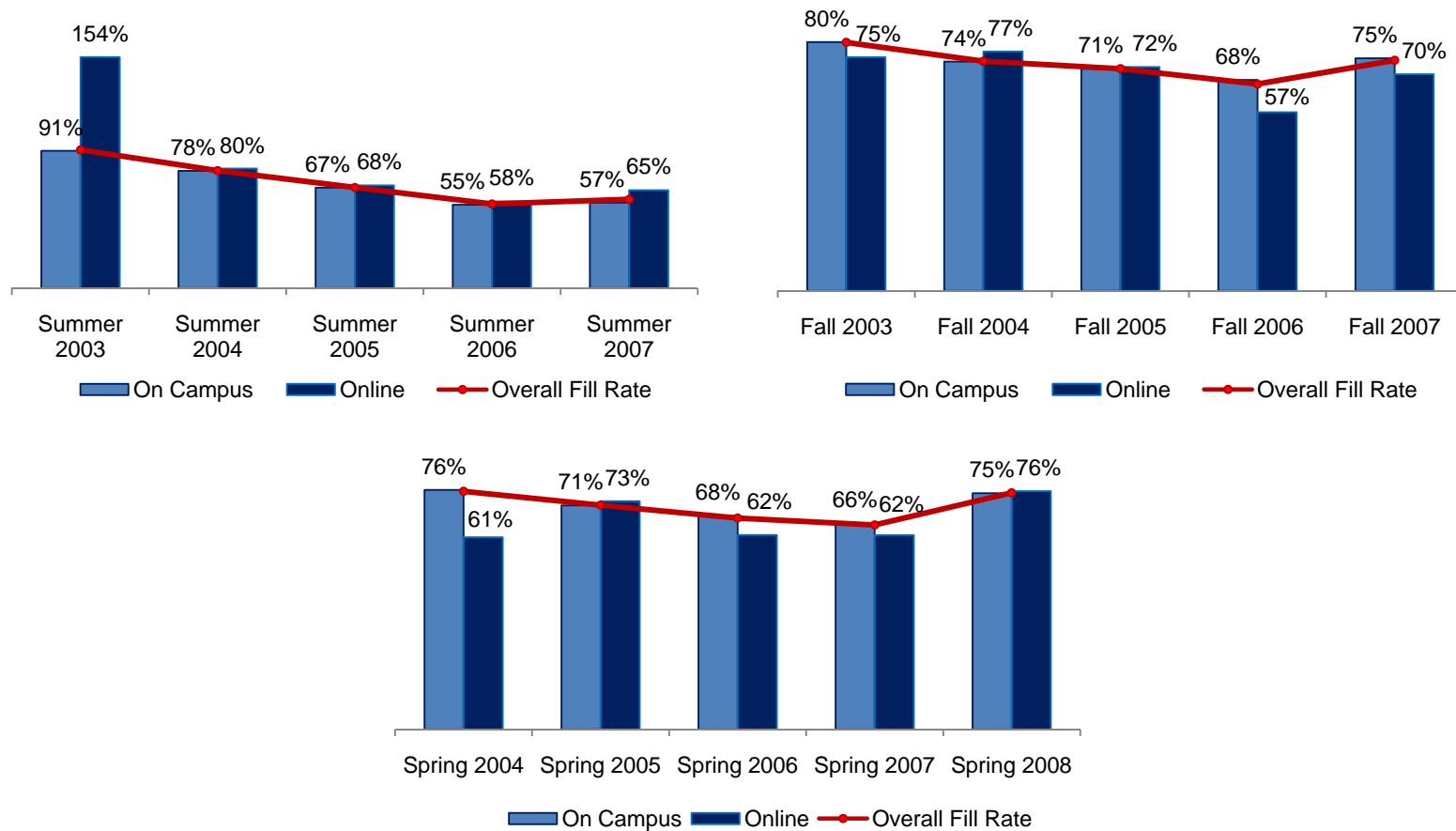
Figure 4.2.1: City College Enrollments



City College Section IV: Productivity and Efficiency

Fill Rates: The overall fill rates for City College were the highest for the fall cohorts, on average, when compared to spring and summer cohorts (72% vs. 71% and 66%, respectively) between 2003/04 and 2007/08. Overall fill rates for all colleges in the district followed the same pattern. On average, most fill rates were the highest for the on campus mode of instruction across summer, fall and spring cohorts (66%, 72%, and 71%) compared to the online mode of instruction (summer 68%, fall 71%, and spring 70% cohorts). City College had lower fill rates, on average, compared to the fill rates of all colleges in the district across all modes of instruction.

Figure 4.2.2: City College Fill Rate



City College Section IV: Productivity and Efficiency

Table 4.2: City College Enrollments and Fill Rates

Term	On Campus			Online			Total		
	Enrollment	Capacity	Fill Rate	Enrollment	Capacity	Fill Rate	Enrollment	Capacity	Fill Rate
Summer 2003	7,224	7,909	91%	123	80	154%	7,347	7,989	92%
Summer 2004	6,659	8,526	78%	163	205	80%	6,822	8,731	78%
Summer 2005	7,325	10,960	67%	995	1,455	68%	8,320	12,415	67%
Summer 2006	7,489	13,509	55%	2,398	4,155	58%	9,887	17,664	56%
Summer 2007	7,932	13,939	57%	3,152	4,837	65%	11,084	18,776	59%
Total & Average	36,629	54,843	67%	6,831	10,732	64%	43,460	65,575	66%
Fall 2003	31,959	39,936	80%	620	825	75%	32,579	40,761	80%
Fall 2004	30,274	41,032	74%	797	1,035	77%	31,071	42,067	74%
Fall 2005	29,974	41,960	71%	1,809	2,512	72%	31,783	44,472	71%
Fall 2006	30,364	44,733	68%	3,874	6,740	57%	34,238	51,473	67%
Fall 2007	31,984	42,756	75%	4,212	6,043	70%	36,196	48,799	74%
Total & Average	154,555	210,417	73%	11,312	17,155	66%	165,867	227,572	73%
Spring 2004	30,185	39,493	76%	748	1,220	61%	30,933	40,713	76%
Spring 2005	31,009	43,383	71%	1,725	2,368	73%	32,734	45,751	72%
Spring 2006	29,939	43,926	68%	3,621	5,836	62%	33,560	49,762	67%
Spring 2007	30,636	46,563	66%	4,884	7,879	62%	35,520	54,442	65%
Spring 2008	32,033	42,493	75%	6,235	8,200	76%	38,268	50,693	75%
Total & Average	153,802	215,858	71%	17,213	25,503	67%	171,015	241,361	71%

Source: SDCCD Information System

City College Section V: Human Resources

This section of the Fact Book contains information on the number and classification of employees during the Fall 2007 semester. The information is broken down by gender and ethnicity.

City College Section V: Human Resources

Fall 2007 Employees by Ethnicity: There were a total of 1,327 employees working at City College during Fall 2007. The ethnic breakdown showed that White employees comprised 49% of the total employee population, followed by Latino employees (19%) and African American employees comprised 13% of the City College workforce. Among classified staff, White employees comprised 27% of the employees and made up almost two-thirds of the teaching faculty positions (63%) compared to other ethnic groups. Although White employees generally constituted a higher percentage of the workforce at City College, the trend decreased with management and supervisory positions. White employees comprised only one-third (33%) of management positions. Latinos comprised 25% of the management positions followed by African Americans with 8%. Among supervisory staff positions, White employees comprised 39%, while African American employees comprised one-third (33%) and Latino employees constituted 11%.

Figure 5.1: City College Fall 2007 Employees by Ethnicity

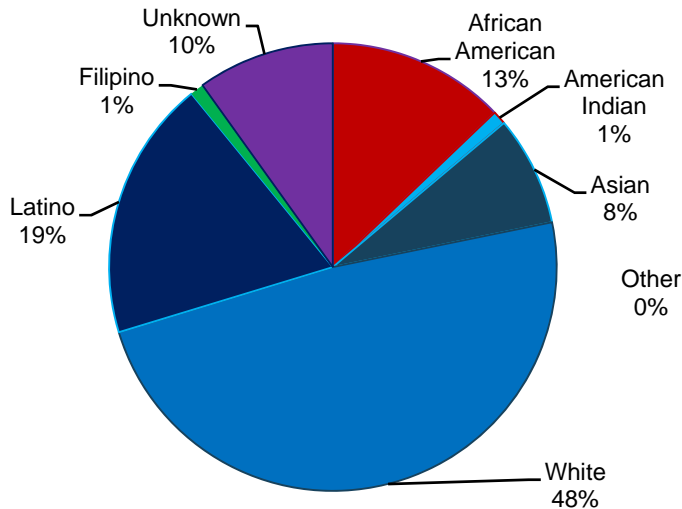
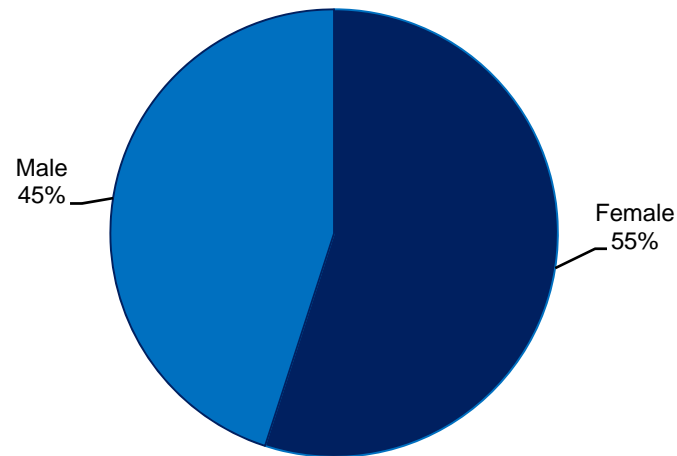


Figure 5.2: City College Fall 2007 Employees by Gender



City College Section V: Human Resources

Table 5.1: City College Fall 2007 Employees by Ethnicity

	African American		American Indian		Asian		White		Latino		Filipino		Other		Unknown		Total
Total Employees	169	13%	7	1%	102	8%	653	49%	258	19%	8	1%	4	<1%	126	10%	1,327
Male	67	11%	2	<1%	53	9%	320	54%	101	17%	3	1%	-	-	52	9%	598
Female	102	14%	5	<1%	49	7%	333	46%	157	22%	5	1%	4	1%	74	10%	729
Classified Staff	21	16%	2	2%	11	9%	34	27%	36	28%	5	4%	2	2%	17	14%	128
Non-Academic Hourly	61	19%	3	1%	27	8%	109	33%	111	34%	-	-	-	-	17	5%	328
Teaching Faculty	66	9%	2	<1%	49	7%	450	63%	82	11%	1	<1%	1	<1%	69	10%	720
Contract	18	11%	-	-	16	10%	85	54%	19	12%	-	-	-	-	21	13%	159
Adjunct	48	9%	2	<1%	33	6%	365	65%	63	11%	1	<1%	1	<1%	48	9%	561
Counseling Faculty	9	21%	-	-	5	12%	5	12%	11	26%	1	2%	1	2%	10	24%	42
Contract	5	22%	-	-	1	4%	4	17%	6	26%	-	-	1	4%	6	26%	23
Adjunct	4	21%	-	-	4	21%	1	5%	5	26%	1	5%	-	-	4	21%	19
Library Faculty	1	9%	-	-	2	18%	6	55%	1	9%	-	-	-	-	1	9%	11
Contract	-	-	-	-	1	20%	2	40%	1	20%	-	-	-	-	1	20%	5
Adjunct	1	17%	-	-	1	17%	4	67%	-	-	-	-	-	-	-	-	6
Police Officers	-	-	-	-	3	30%	5	50%	1	10%	1	10%	-	-	-	-	10
Community Service Officers	1	33%	-	-	-	-	1	33%	-	-	-	-	-	-	1	33%	3
Management	1	8%	-	-	-	-	4	33%	3	25%	-	-	-	-	4	33%	12
Supervisory Staff	6	33%	-	-	2	11%	7	39%	2	11%	-	-	-	-	1	6%	18

Source: SDCCD Information System

Table 5.2: City College Employee Overall Gender and Job Status

Gender		Job Status	
Male	45%	Full-Time/Contract	28%
Female	55%	Hourly/Adjunct	72%

Source: SDCCD Information System