



San Diego Community College District

San Diego Mesa College Fact Book 2008



November 2008

Prepared by:
Office of Institutional Research and Planning

Mesa College Fact Book 2008: Table of Contents

Overview.....1

Highlights.....2

Section I: Headcount and Student Characteristics.....4

- Overall.....5
- Gender.....6
- Ethnicity.....7
- Age.....8
- Enrollment Status.....9
- Education Objective.....10
- Primary Language.....12
- Prior Education Level.....13
- Residence by Service Area.....14
- Units Attempted.....15
- First Generation.....16
- Income Level.....17
- DSPS.....18
- EOPS.....19

Section II. Fall to Spring Term Persistence Rates.....20

- Overall.....21
- Gender.....22
- Ethnicity.....23
- Age.....25

Section III. Student Outcomes.....27

- Annual Success Rates
 - Overall.....28
 - Gender.....29
 - Ethnicity.....30
 - Age.....31

- Annual Retention Rates
 - Overall.....32
 - Gender.....33
 - Ethnicity.....34
 - Age.....35
- Annual GPA
 - Overall.....36
 - Gender.....37
 - Ethnicity38
 - Age.....39
- Annual Awards Conferred
 - Overall.....40
 - Gender.....41
 - Ethnicity.....44
 - Age.....48
- Annual Transfer
 - Overall.....52
 - Gender.....53
 - Ethnicity.....54
 - Age.....55
 - UC/CSU.....56
 - Institution Type.....57
 - Institution Location.....58

Section IV. Productivity and Efficiency.....59

- Annual FTES.....60
- Fall Enrollments: Online and On Campus.....61
- Fill Rates.....62

Section V. Human Resources.....64

- Fall 2007 Employees by Gender and Ethnicity.....65

Mesa College Fact Book 2008: Overview

This Fact Book is a publication of the Office of Institutional Research and Planning for the San Diego Community College District. It is designed to serve the information needs of the college with a primary focus on student enrollment, demographics and outcomes.

The Fact Book is a rich source of college-wide trend information that may be used for planning and decision making. The book contains the following five sections:

- 1) Headcount and Student Characteristics. Provides information on student demographic characteristics (e.g., age, ethnicity and educational objective) over five years.
- 2) Term Persistence Rates. Provides information about students who complete a fall term and enroll in the subsequent spring term. The information is also broken down by demographic characteristics of interest.
- 3) Student Outcomes. Provides information on students' successful course completion rates, retention rates, GPA, awards conferred and transfer volume. All of the information is provided in summary form as well as broken down by demographic characteristics of interest.
- 4) Productivity and Efficiency. Provides information on annual FTES, enrollment and fill rates.
- 5) Human Resources. Provides information on the number of employees and is broken down by ethnicity and gender by employee classification.

Each of the sections contain the following benchmarks: 1) The percentage change over the five year period being reported, 2) The collegewide average and 3) The districtwide (includes Continuing Education) or all colleges in the district averages (excludes Continuing Education).

Mesa College Fact Book 2008: Highlights

Headcount and Student Characteristics

- Unduplicated student headcount for Mesa College showed a 3% decline between Fall 03 and Fall 07.
- The Latino student headcount at Mesa College (17%) was underrepresented when compared to the district-wide Latino student population (28%).
- Students that were between ages 18-24, on average, comprised more than half of the Mesa student population.
- About half of the Mesa student population (53%) selected transfer with or without an AA degree as their educational objective.
- From Fall 2003 to Fall 2007, on average, one-quarter of the students reported being first generation college students.

Term Persistence Rates

- Overall, student age increased as term persistence rates decreased, with an average persistence rate of 58% for first-time Mesa students between Fall 2003 and Fall 2007 cohorts.
- Persistence rates for African American and Filipino students showed a downward trend from 61% in the Fall 2003 cohort to 56% in the Fall 2007 cohort.
- Students 50 years and older declined from a 47% average term persistence rate in Fall 2003 cohort to 15% in Fall 2007 cohort.

Student Outcomes

- A general trend showed as age increased so did success rate between 2003/04 and 2007/08.
- A general trend between 2003/04 and 2007/08 showed, as age increased so did GPA.
- A general trend between 2003/04 and 2007/08 showed student learning outcomes of African American, American Indian, Filipino and Latino students were lower in success/retention rates and overall GPA compared to their Asian/Pacific Islander and White student counterparts.

Annual Awards Conferred

- On average, 78% of the total awards conferred at Mesa College were associate degrees.

Mesa College Fact Book 2008: Highlights

- Of the total awards conferred at Mesa College, female students (58%) received more associate degrees, on average, than their male student counterpart (42%) between 2003/04 and 2007/08.
- The number of associate degrees conferred at Mesa College increased for American Indians, African Americans, and Latinos (38%, 20% and 9%, respectively) between 2003/04 and 2007/08.
- Approximately three-quarters of the total number of associate degrees awarded were to students between ages 18-29 years old.

Annual Transfer

- The annual transfer volume for Mesa College increased 14%, from 6,144 in 2003/04 to 7,025 in 2007/08.
- Of all the students who transferred to a CSU/UC from Mesa College, 54% transferred into the California State University (CSU) system and 46% transferred into the University of California (UC) system.
- Of all the students who transferred from Mesa College, 24% transferred to a private institution and 76% transferred to a public institution.
- Of all the students who transferred from Mesa College, 82% transferred to an In-State institution and 18% transferred to an Out-of-State institution.

Productivity and Efficiency

- Mesa College had declining FTES between 2003/04 and 2006/07 with a slight increase in 2007/08. Between 2003/04 and 2007/08, there was a 5% decrease in FTES.
- The overall fill rates for Mesa College were the highest for the fall cohorts when compared to spring and summer cohorts (85% vs. 80% and 75%, respectively) between 2003/04 and 2007/08.
- The enrollment trend for the online mode of instruction increased tremendously for summer (568%), fall (293%) and spring (332%) cohorts between 2003/04 and 2007/08.

Human Resources Highlights

- There were a total of 1,432 total employees working at Mesa College during Fall 2007.
- The ethnic breakdown showed that White employees comprised 57% of the total employee population, followed by Latino and Asian (12% each) employees and African American employees comprising 8% of the Mesa College workforce.

Mesa College Section I: Headcount and Student Characteristics

This section of the Fact Book contains student headcount by various student characteristics. The headcount figures are based on official census counts at the end of the semester (all students who dropped or never attended prior to the class census date are not included). The headcount information is reported over a period of five years to analyze trends and establish benchmarks. Headcount information is broken down into the following segments:

- Overall
- Gender
- Ethnicity
- Age
- Education Goal
- Enrollment Status
- Primary Language
- Prior Education Level
- Residence by Service Area
- Units Attempted
- First Generation
- Income Level
- DSPS
- EOPS

Mesa College Section I: Headcount and Student Characteristics

Overall Headcount: Unduplicated student headcount for Mesa College showed a 3% decline between Fall 03 and Fall 07.

Figure 1.1: Mesa College Overall Headcount

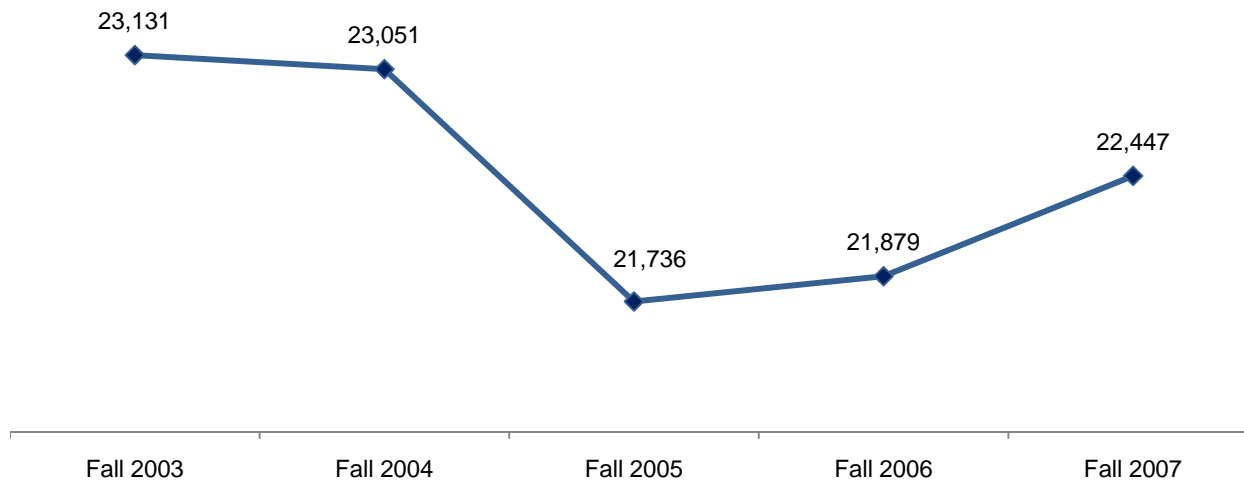


Table 1.1: Mesa College Overall Headcount

	Fall 2003	Fall 2004	Fall 2005	Fall 2006	Fall 2007	% Change Fall 03 and 07
	#	#	#	#	#	
Total	23,131	23,051	21,736	21,879	22,447	-3%

Source: SDCCD Information System

Mesa College Section I: Headcount and Student Characteristics

Headcount by Gender: On average, the female student headcount (54%) was higher than their male counterpart (46%), which has remained consistent from Fall 2003 to Fall 2007. Both male and female student headcounts declined between Fall 2003 and Fall 2007, which was consistent with the overall student population trend.

Figure 1.2: Mesa College Headcount by Gender

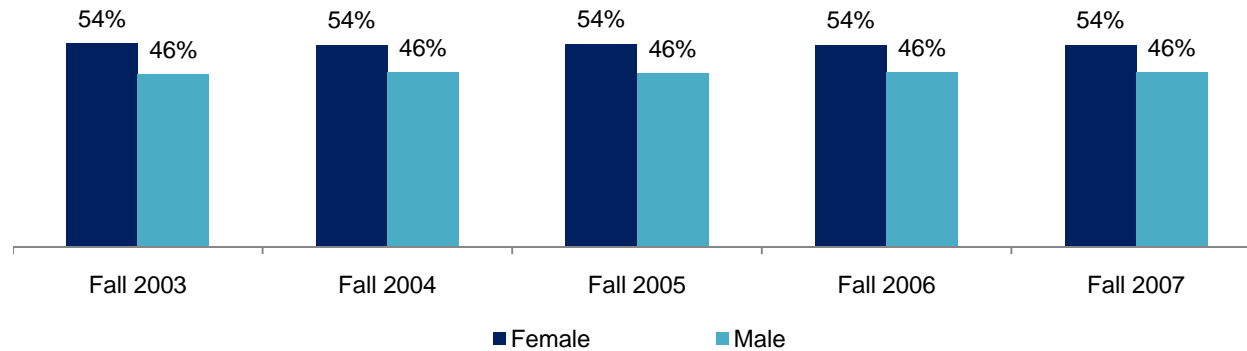


Table 1.2: Mesa College Headcount by Gender

	Fall 2003		Fall 2004		Fall 2005		Fall 2006		Fall 2007		% Change Fall 03 and 07	College Average Fall 03-07	Districtwide Average Fall 03-07
	#	%	#	%	#	%	#	%	#	%			
Female	12,516	54%	12,352	54%	11,708	54%	11,727	54%	12,057	54%	-4%	54%	55%
Male	10,591	46%	10,681	46%	10,018	46%	10,148	46%	10,388	46%	-2%	46%	44%
Unreported	24	0%	18	0%	10	0%	4	0%	2	0%	-92%	0%	0%
Total	23,131	100%	23,051	100%	21,736	100%	21,879	100%	22,447	100%	-3%	100%	100%

Source: SDCCD Information System

Mesa College Section I: Headcount and Student Characteristics

Headcount by Ethnicity: The ethnic groups that comprised the highest headcount between Fall 2003 and Fall 2007 were White students (41%), Latino students (17%) and Asian/Pacific Islander students (16%). At Mesa College, the Latino student population increased 19% in contrast to students who were categorized as ‘Other’ ethnicities, which declined 25% between Fall 2003 and Fall 2007. The Latino student headcount at Mesa College (17%) was underrepresented when compared to the districtwide Latino population headcount (28%).

Figure 1.3: Mesa College Headcount by Ethnicity

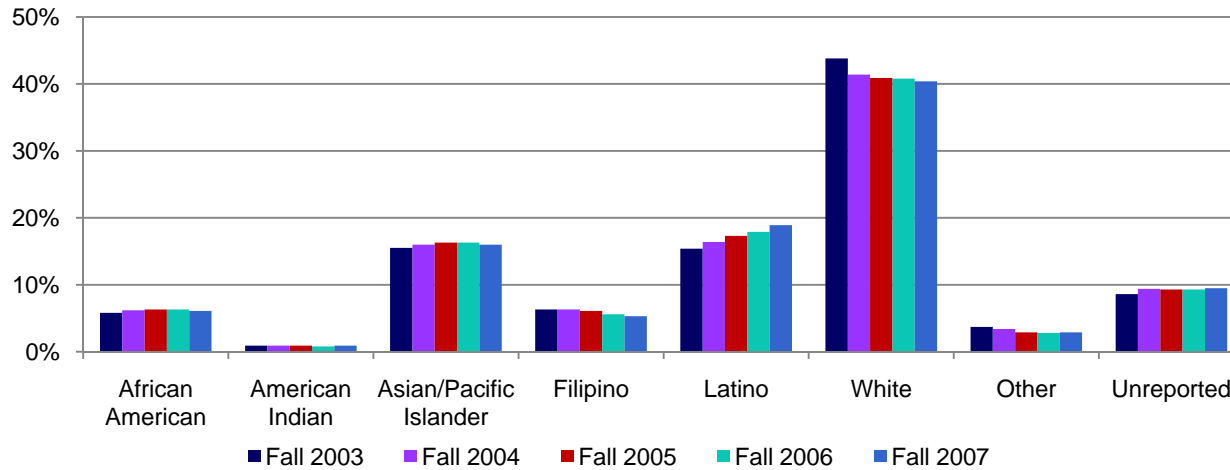


Table 1.3: Mesa College Headcount by Ethnicity

	Fall 2003		Fall 2004		Fall 2005		Fall 2006		Fall 2007		% Change Fall 03 and 07	College Average Fall 03-07	Districtwide Average Fall 03-07
	#	%	#	%	#	%	#	%	#	%			
African American	1,347	6%	1,432	6%	1,373	6%	1,389	6%	1,363	6%	1%	6%	8%
American Indian	213	1%	217	1%	192	1%	181	1%	204	1%	-4%	1%	1%
Asian/Pacific Islander	3,578	16%	3,682	16%	3,538	16%	3,565	16%	3,586	16%	0%	16%	12%
Filipino	1,448	6%	1,461	6%	1,318	6%	1,236	6%	1,193	5%	-18%	6%	5%
Latino	3,565	15%	3,789	16%	3,762	17%	3,912	18%	4,250	19%	19%	17%	28%
White	10,127	44%	9,535	41%	8,899	41%	8,931	41%	9,062	40%	-11%	41%	37%
Other	865	4%	778	3%	626	3%	621	3%	653	3%	-25%	3%	3%
Unreported	1,988	9%	2,157	9%	2,028	9%	2,044	9%	2,136	10%	7%	9%	6%
Total	23,131	100%	23,051	100%	21,736	100%	21,879	100%	22,447	100%	-3%	100%	100%

Source: SDCCD Information System

Mesa College Section I: Headcount and Student Characteristics

Headcount by Age: Students who were between ages 18-24, on average, constituted more than half of the Mesa student population. Of the total student population, students under age 18 had nearly doubled (63%) from Fall 2003 to Fall 2007. With the exception of students under 18 years old, all other age cohorts exhibited a downward trend in student enrollment between Fall 2003 and Fall 2007. Student headcount for those who were 50 years and older displayed the greatest disparity at Mesa College when compared to the districtwide student population (3% and 18%, respectively).

Figure 1.4: Mesa College Headcount by Age

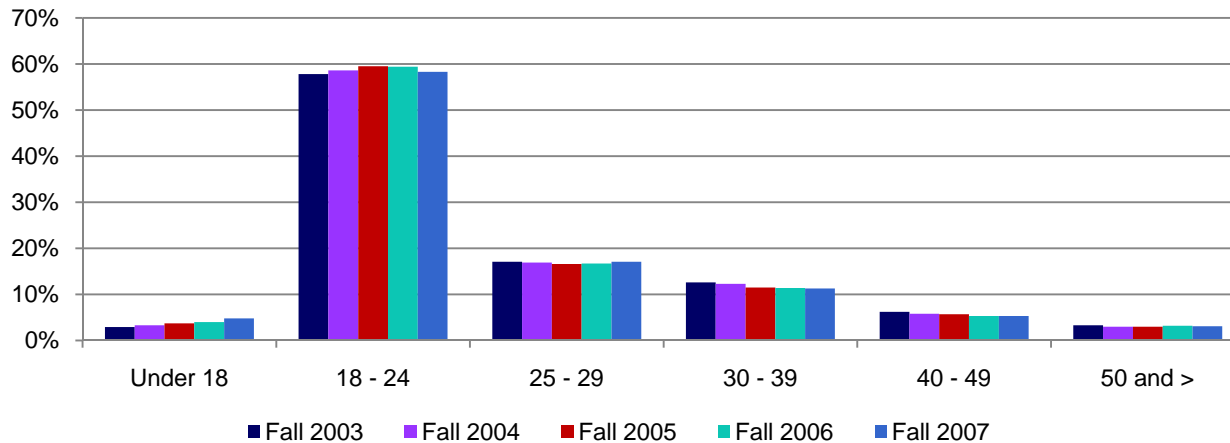


Table 1.4: Mesa College Headcount by Age

	Fall 2003		Fall 2004		Fall 2005		Fall 2006		Fall 2007		% Change Fall 03 and 07	College Average Fall 03-07	Districtwide Average Fall 03-07
	#	%	#	%	#	%	#	%	#	%			
Under 18	668	3%	772	3%	794	4%	875	4%	1,086	5%	63%	4%	2%
18 - 24	13,377	58%	13,515	59%	12,940	60%	12,989	59%	13,096	58%	-2%	59%	37%
25 - 29	3,956	17%	3,904	17%	3,600	17%	3,659	17%	3,842	17%	-3%	17%	15%
30 - 39	2,923	13%	2,832	12%	2,494	12%	2,500	11%	2,539	11%	-13%	12%	17%
40 - 49	1,444	6%	1,329	6%	1,246	6%	1,165	5%	1,182	5%	-18%	6%	11%
50 and >	763	3%	697	3%	661	3%	691	3%	701	3%	-8%	3%	18%
Unreported	0	0%	2	0%	1	0%	0	0%	1	0%	--	0%	0%
Total	23,131	100%	23,051	100%	21,736	100%	21,879	100%	22,447	100%	-3%	100%	100%

Source: SDCCD Information System

Mesa College Section I: Headcount and Student Characteristics

Headcount by Enrollment Status: Sixty-four percent of the student population were continuing students. The number of current high school students who were enrolled at Mesa College increased by 43%, from 977 students in Fall 2003 to 1,404 in Fall 2007.

Figure 1.5: Mesa College Headcount by Enrollment Status

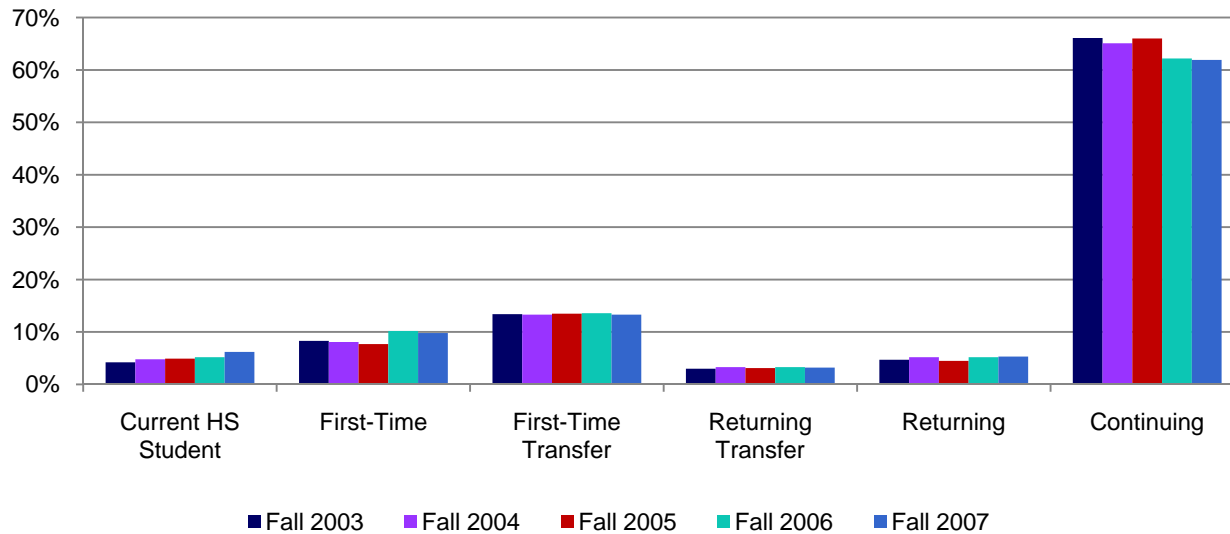


Table 1.5: Mesa College Headcount by Enrollment Status

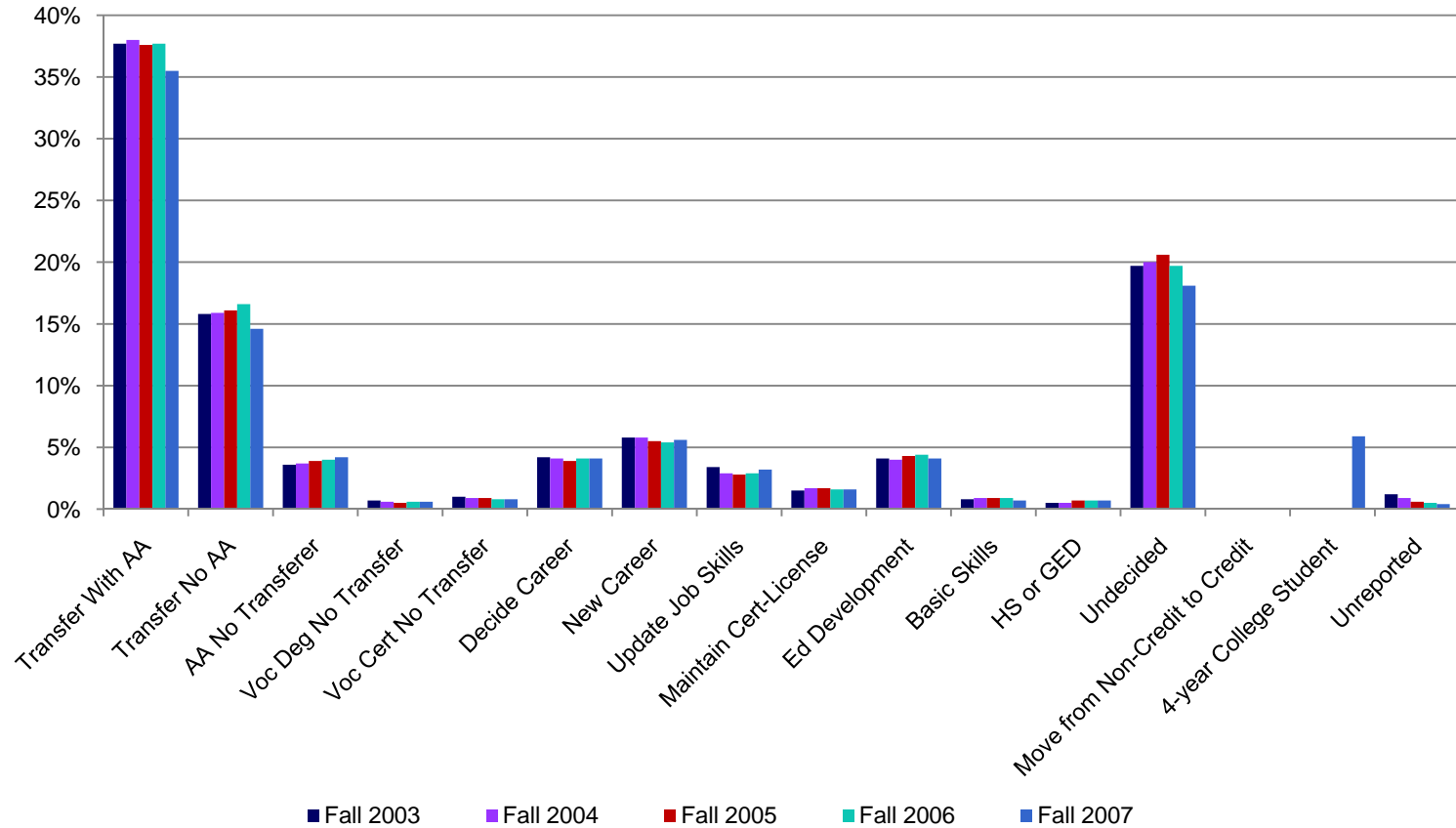
	Fall 2003		Fall 2004		Fall 2005		Fall 2006		Fall 2007		% Change Fall 03 and 07	College Average Fall 03-07	All Colleges Average Fall 03-07
	#	%	#	%	#	%	#	%	#	%			
Current HS Student	977	4%	1,102	5%	1,062	5%	1,143	5%	1,401	6%	43%	5%	3%
First-Time	1,928	8%	1,858	8%	1,673	8%	2,238	10%	2,207	10%	14%	9%	10%
First-Time Transfer	3,109	13%	3,076	13%	2,929	14%	2,984	14%	2,987	13%	-4%	13%	14%
Returning Transfer	702	3%	763	3%	683	3%	717	3%	727	3%	4%	3%	4%
Returning	1,078	5%	1,197	5%	979	5%	1,145	5%	1,188	5%	10%	5%	6%
Continuing	15,295	66%	15,014	65%	14,349	66%	13,598	62%	13,899	62%	-9%	64%	62%
Unreported	42	0%	41	0%	61	0%	54	0%	38	0%	-10%	0%	0%
Total	23,131	100%	23,051	100%	21,736	100%	21,879	100%	22,447	100%	-3%	100%	100%

Source: SDCCD Information System

Mesa College Section I: Headcount and Student Characteristics

Headcount by Educational Objective: Almost half of the Mesa student population (53%) selected transfer with or without an AA degree as their educational objective. Obtaining a High school diploma or GED, as an educational objective, increased 32% among students from Fall 2003 to Fall 2007.

Figure 1.6: Mesa College Headcount by Educational Objective



Mesa College Section I: Headcount and Student Characteristics

Table 1.6: Mesa College Headcount by Educational Objective

	Fall 2003		Fall 2004		Fall 2005		Fall 2006		Fall 2007		% Change Fall 03 and 07	College Average Fall 03-07	All Colleges Average Fall 03-07
	#	%	#	%	#	%	#	%	#	%			
Transfer With AA	8,721	38%	8,758	38%	8,169	38%	8,249	38%	7,968	36%	-9%	37%	35%
Transfer No AA	3,660	16%	3,665	16%	3,497	16%	3,629	17%	3,267	15%	-11%	16%	13%
AA No Transfer	833	4%	864	4%	854	4%	879	4%	936	4%	12%	4%	5%
Voc Deg No Transfer	155	1%	149	1%	117	1%	133	1%	133	1%	-14%	1%	1%
Voc Cert No Transfer	228	1%	215	1%	186	1%	176	1%	189	1%	-17%	1%	1%
Decide Career	980	4%	935	4%	849	4%	905	4%	918	4%	-6%	4%	4%
New Career	1,341	6%	1,338	6%	1,201	6%	1,191	5%	1,246	6%	-7%	6%	7%
Update Job Skills	783	3%	677	3%	602	3%	635	3%	708	3%	-10%	3%	5%
Maintain Cert-License	338	2%	395	2%	366	2%	341	2%	357	2%	6%	2%	2%
Ed Development	950	4%	928	4%	943	4%	966	4%	911	4%	-4%	4%	4%
Basic Skills	184	1%	199	1%	189	1%	194	1%	162	1%	-12%	1%	1%
HS or GED	123	1%	121	1%	143	1%	160	1%	162	1%	32%	1%	1%
Undecided	4,559	20%	4,603	20%	4,483	21%	4,307	20%	4,068	18%	-11%	20%	19%
Move from Non-Credit to Credit	0	0%	0	0%	0	0%	0	0%	12	0%	--	0%	0%
4-year College Student	0	0%	0	0%	0	0%	0	0%	1,318	6%	--	1%	1%
Unreported	276	1%	204	1%	137	1%	114	1%	92	0%	-67%	1%	1%
Total	23,131	100%	23,051	100%	21,736	100%	21,879	100%	22,447	100%	-3%	100%	100%

Source: SDCCD Information System

Mesa College Section I: Headcount and Student Characteristics

Headcount by Primary Language: On average, 94% of the Mesa student population spoke English as their primary language. There was a slight decrease for those who reported speaking English and those who spoke a language other than English (2% and 6%, respectively) between Fall 2003 and Fall 2007, which was consistent with the overall decline in headcount from Fall 2003 to Fall 2007.

Figure 1.7: Mesa College Headcount by Primary Language

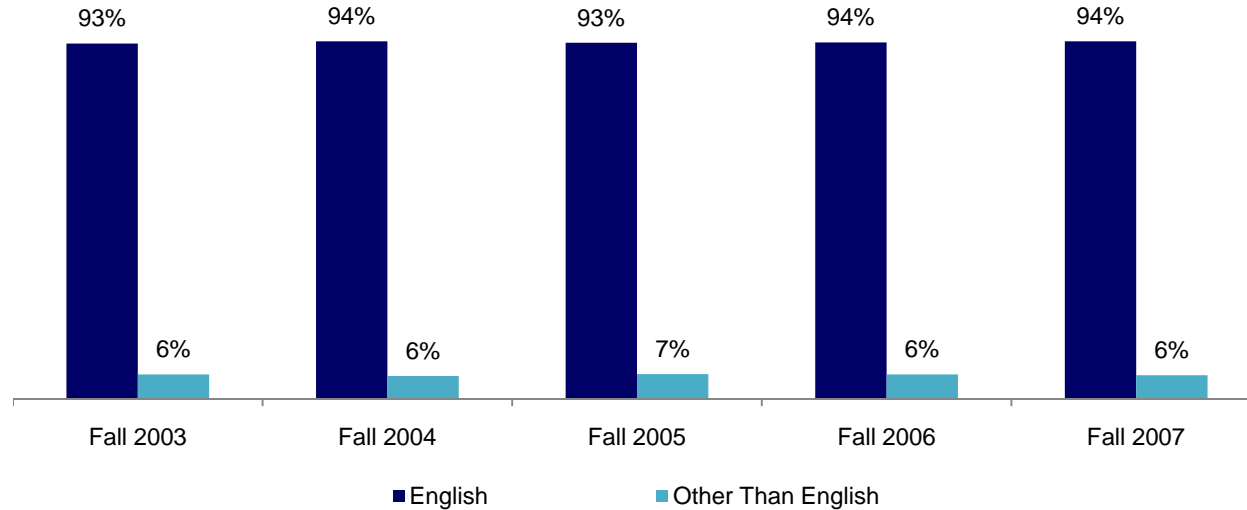


Table 1.7: Mesa College Headcount by Primary Language

	Fall 2003		Fall 2004		Fall 2005		Fall 2006		Fall 2007		% Change Fall 03 and 07	College Average Fall 03-07	All Colleges Average Fall 03-07
	#	%	#	%	#	%	#	%	#	%			
English	21,567	93%	21,614	94%	20,304	93%	20,455	94%	21,045	94%	-2%	94%	93%
Other Than English	1,475	6%	1,394	6%	1,409	7%	1,408	6%	1,388	6%	-6%	6%	7%
Unreported	89	0%	43	0%	23	0%	16	0%	14	0%	-84%	0%	0%
Total	23,131	100%	23,051	100%	21,736	100%	21,879	100%	22,447	100%	-3%	100%	100%

Source: SDCCD Information System

Mesa College Section I: Headcount and Student Characteristics

Headcount by Prior Education Level: From Fall 2003 to Fall 2007, 68% of the Mesa College student population reported that they were high school graduates. Mesa students who were high school proficient increased 34% between Fall 2003 and Fall 2007. Eleven percent of the Mesa student population had a bachelor's degree or higher and one-tenth were either current high school students (5%) or graduated from a foreign high school (5%).

Figure 1.8: Mesa College Headcount by Prior Education Level

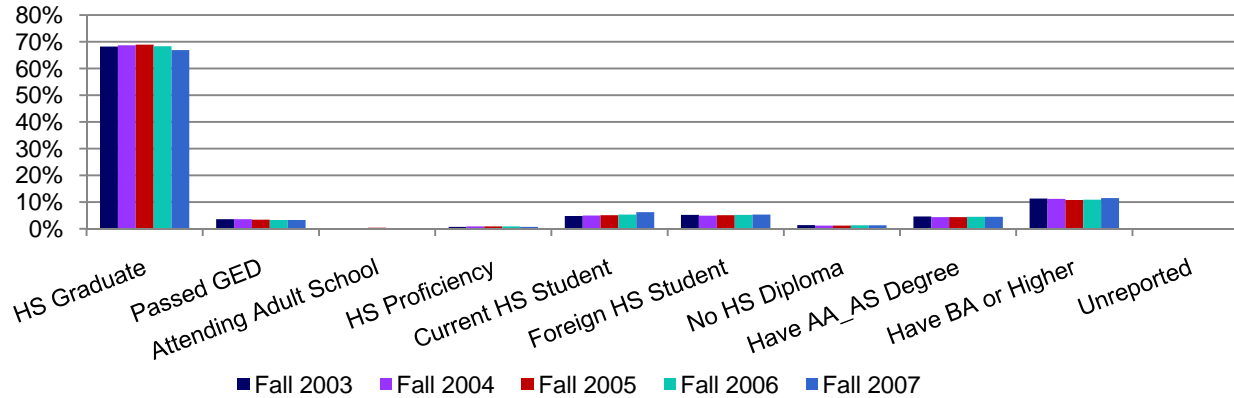


Table 1.8: Mesa College Headcount by Prior Education Level

	Fall 2003		Fall 2004		Fall 2005		Fall 2006		Fall 2007		% Change Fall 03 and 07	College Average Fall 03-07	All Colleges Average Fall 03-07
	#	%	#	%	#	%	#	%	#	%			
HS Graduate	15,778	68%	15,834	69%	14,968	69%	14,941	68%	15,011	67%	-5%	68%	67%
Passed GED	836	4%	820	4%	741	3%	732	3%	745	3%	-11%	3%	5%
Attending Adult School	32	0%	46	0%	78	0%	55	0%	43	0%	34%	0%	0%
HS Proficiency	169	1%	197	1%	198	1%	197	1%	167	1%	-1%	1%	1%
Current HS Student	1,117	5%	1,162	5%	1,102	5%	1,165	5%	1,399	6%	25%	5%	3%
Foreign HS Student	1,199	5%	1,118	5%	1,098	5%	1,138	5%	1,192	5%	-1%	5%	5%
No HS Diploma	318	1%	278	1%	255	1%	278	1%	297	1%	-7%	1%	2%
Have AA_AS Degree	1,059	5%	1,007	4%	949	4%	978	5%	1,018	5%	-4%	4%	5%
Have BA or Higher	2,621	11%	2,589	11%	2,347	11%	2,395	11%	2,575	12%	-2%	11%	11%
Unreported	2	0%	0	0%	0	0%	0	0%	0	0%	-100%	0%	0%
Total	23,131	100%	23,051	100%	21,736	100%	21,879	100%	22,447	100%	-3%	100%	100%

Source: SDCCD Information System

Mesa College Section I: Headcount and Student Characteristics

Headcount by Service Areas: Between Fall 2003 and Fall 2007, on average, 35% of students who resided within the Mesa service area attended Mesa College. Among the three college service areas, the greatest proportion of Mesa students resided within its service area. Twenty-nine percent of students who resided outside the Mesa service area attended Mesa College.

Figure 1.9: Mesa College Headcount by Service Area

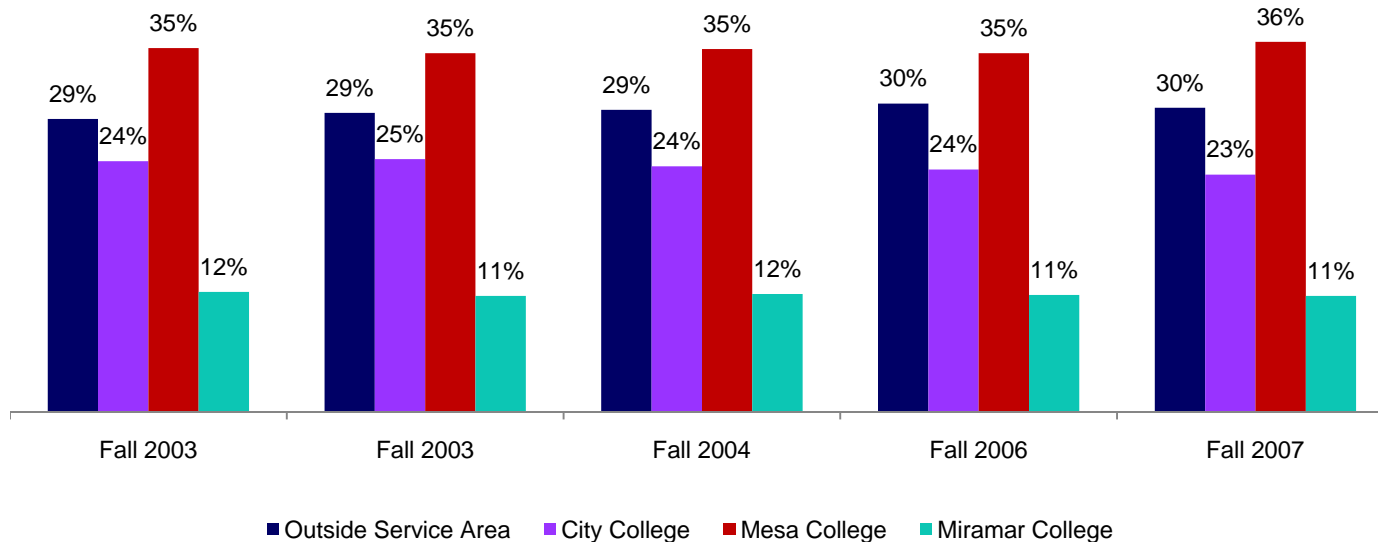


Table 1.9: Mesa College Headcount by Service Area

	Fall 2003		Fall 2004		Fall 2005		Fall 2006		Fall 2007		% Change Fall 03 and 07	College Average Fall 03-07	All Colleges Average Fall 03-07
	#	%	#	%	#	%	#	%	#	%			
Outside Service Area	6,584	29%	6,717	29%	6,391	29%	6,574	30%	6,636	30%	1%	29%	35%
City College	5,649	24%	5,671	25%	5,189	24%	5,171	24%	5,176	23%	-8%	24%	30%
Mesa College	8,183	35%	8,047	35%	7,662	35%	7,645	35%	8,089	36%	-1%	35%	22%
Miramar College	2,715	12%	2,616	11%	2,494	12%	2,489	11%	2,546	11%	-6%	11%	12%
Total	23,131	100%	23,051	100%	21,736	100%	21,879	100%	22,447	100%	-3%	100%	100%

Source: SDCCD Information System

Mesa College Section I: Headcount and Student Characteristics

Headcount by Units Attempted: On average, half (53%) of the students attempted between 3 to 8.9 units between Fall 2003 and Fall 2007. About one-quarter of the students at Mesa College attempted 12 units or more on average.

Figure 1.10: Mesa College Headcount by Units Attempted

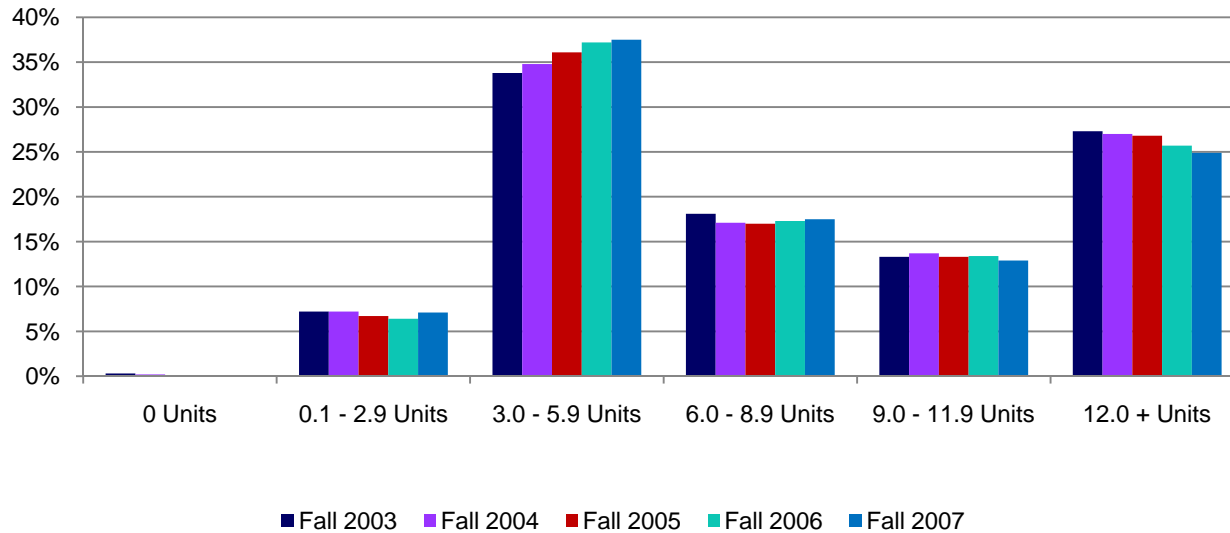


Table 1.10: Mesa College Headcount by Units Attempted

	Fall 2003		Fall 2004		Fall 2005		Fall 2006		Fall 2007		% Change Fall 03 and 07	College Average Fall 03-07	All Colleges Average Fall 03-07
	#	%	#	%	#	%	#	%	#	%			
0 Units	68	0%	42	0%	18	0%	31	0%	19	0%	-72%	0%	0%
0.1 - 2.9 Units	1,659	7%	1,656	7%	1,451	7%	1,401	6%	1,588	7%	-4%	7%	8%
3.0 - 5.9 Units	7,827	34%	8,020	35%	7,855	36%	8,129	37%	8,428	38%	8%	36%	31%
6.0 - 8.9 Units	4,180	18%	3,947	17%	3,689	17%	3,776	17%	3,925	18%	-6%	17%	19%
9.0 - 11.9 Units	3,072	13%	3,165	14%	2,899	13%	2,924	13%	2,895	13%	-6%	13%	13%
12.0 + Units	6,325	27%	6,221	27%	5,824	27%	5,618	26%	5,592	25%	-12%	26%	29%
Total	23,131	100%	23,051	100%	21,736	100%	21,879	100%	22,447	100%	-3%	100%	100%

Source: SDCCD Information System

Mesa College Section I: Headcount and Student Characteristics

Headcount by First Generation: From Fall 2003 to Fall 2007, on average, one-quarter of the Mesa students reported being first generation college students. Both groups of students, those who were and those who were not first generation college students, displayed an increase in headcount between Fall 03 and Fall 07 (10% and 2%, respectively).

Figure 1.11: Mesa College Headcount by First Generation

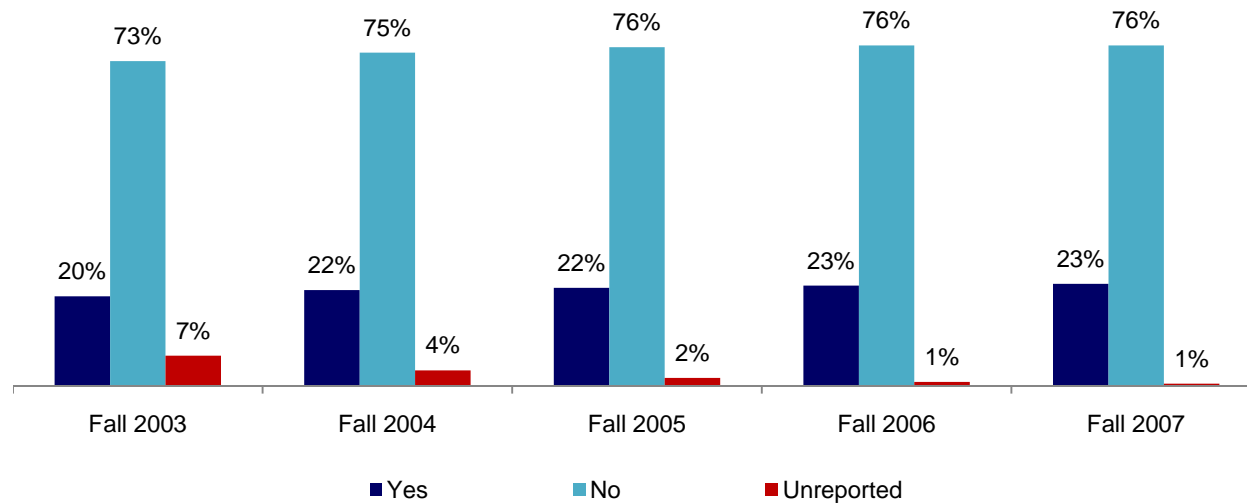


Table 1.11: Mesa College Headcount by First Generation

	Fall 2003		Fall 2004		Fall 2005		Fall 2006		Fall 2007		% Change Fall 03 and 07	College Average Fall 03-07	All Colleges Average Fall 03-07
	#	%	#	%	#	%	#	%	#	%			
Yes	4,680	20%	4,976	22%	4,814	22%	4,947	23%	5,167	23%	10%	22%	24%
No	16,860	73%	17,240	75%	16,517	76%	16,710	76%	17,143	76%	2%	75%	73%
Unreported	1,591	7%	835	4%	405	2%	222	1%	137	1%	-91%	3%	3%
Total	23,131	100%	23,051	100%	21,736	100%	21,879	100%	22,447	100%	-3%	100%	100%

Source: SDCCD Information System

Mesa College Section I: Headcount and Student Characteristics

Headcount by Income: Between Fall 2003 and Fall 2007, among those who reported their income levels, one-quarter (26%) of the Mesa student population reported making over \$33,000 or more a year on average. The number of students who reported making between \$0-2,999 a year on average increased 68% Fall 2003 and Fall 2007. It should be noted that there was a large percentage of students who did not report their income level. Consequently, the data may not be representative of the income level of students at Mesa College.

Figure 1.12: Mesa College Headcount by Income

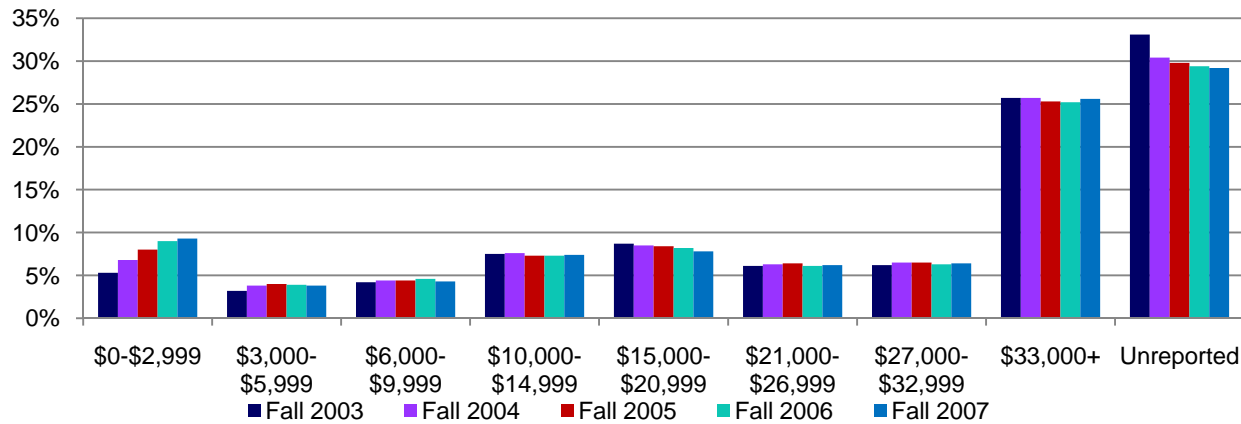


Table 1.12: Mesa College Headcount by Income

	Fall 2003		Fall 2004		Fall 2005		Fall 2006		Fall 2007		% Change Fall 03 and 07	College Average Fall 03-07	All Colleges Average Fall 03-07
	#	%	#	%	#	%	#	%	#	%			
\$0-2,999	1,237	5%	1,565	7%	1,735	8%	1,959	9%	2,082	9%	68%	8%	7%
\$3,000-5,999	743	3%	866	4%	877	4%	863	4%	863	4%	16%	4%	3%
\$6,000-9,999	960	4%	1,009	4%	967	4%	1,002	5%	976	4%	2%	4%	4%
\$10,000-14,999	1,730	8%	1,758	8%	1,576	7%	1,591	7%	1,658	7%	-4%	7%	8%
\$15,000-20,999	2,012	9%	1,970	9%	1,817	8%	1,802	8%	1,748	8%	-13%	8%	9%
\$21,000-26,999	1,405	6%	1,458	6%	1,385	6%	1,334	6%	1,385	6%	-1%	6%	6%
\$27,000-32,999	1,432	6%	1,492	7%	1,406	7%	1,372	6%	1,429	6%	0%	6%	6%
\$33,000+	5,951	26%	5,934	26%	5,493	25%	5,520	25%	5,746	26%	-3%	26%	24%
Unreported	7,661	33%	6,999	30%	6,480	30%	6,436	29%	6,560	29%	-14%	30%	32%
Total	23,131	100%	23,051	100%	21,736	100%	21,879	100%	22,447	100%	-3%	100%	100%

Source: SDCCD Information System

Mesa College Section I: Headcount and Student Characteristics

Disability Support Programs and Services (DSPS): On average, 98% of the Mesa student population had not received any type of disability support services between Fall 2003 and Fall 2007. Moreover, the number of students who had not received disability services decreased 3% from Fall 2003 to Fall 2007.

Figure 1.13: Mesa College Headcount by Support Programs and Services (DSPS)

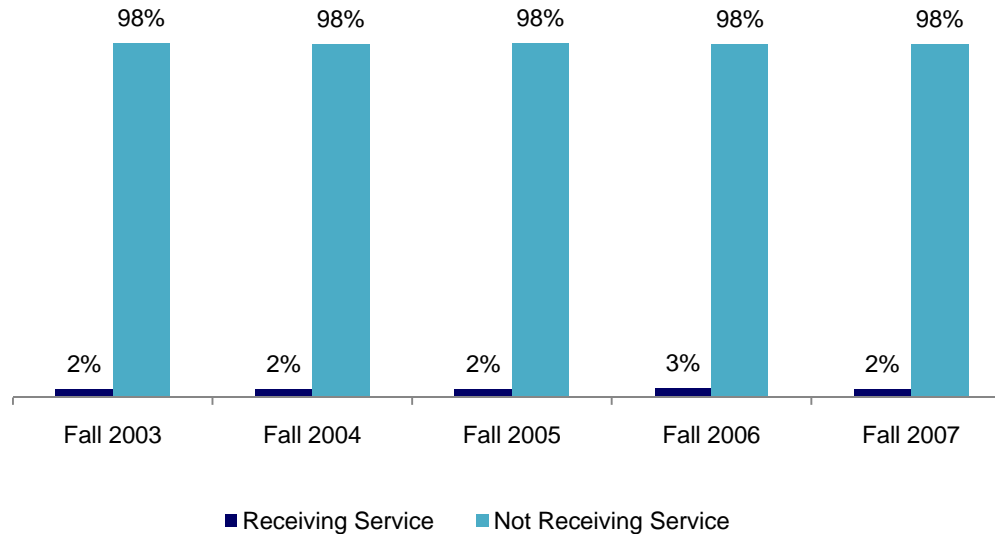


Table 1.13: Mesa College Headcount by Disability Support Programs and Services (DSPS)

	Fall 2003		Fall 2004		Fall 2005		Fall 2006		Fall 2007		% Change Fall 03 and 07	College Average Fall 03-07	All Colleges Average Fall 03-07
	#	%	#	%	#	%	#	%	#	%			
Receiving Service	540	2%	554	2%	510	2%	545	3%	546	2%	1%	2%	3%
Not Receiving Service	22,591	98%	22,497	98%	21,226	98%	21,334	98%	21,901	98%	-3%	98%	97%
Total	23,131	100%	23,051	100%	21,736	100%	21,879	100%	22,447	100%	-3%	100%	100%

Source: SDCCD Information System

Mesa College Section I: Headcount and Student Characteristics

Headcount by Extended Opportunity Programs and Services (EOPS): Ninety-seven percent of the Mesa student population had not received EOPS services between Fall 2003 and Fall 2007. However, there was a 21% increase in the number of students who received EOPS services from Fall 2003 to Fall 2007.

Figure 1.14: Mesa College Headcount by Extended Opportunity Programs and Services (EOPS)

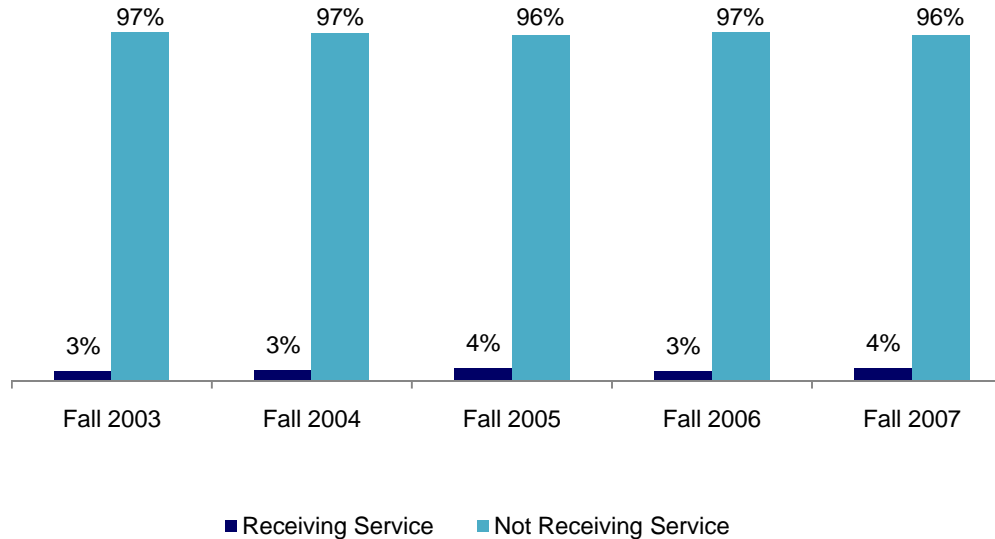


Table 1.14: Mesa College Headcount by Extended Opportunity Programs and Services (EOPS)

	Fall 2003		Fall 2004		Fall 2005		Fall 2006		Fall 2007		% Change Fall 03 and 07	College Average Fall 03-07	All Colleges Average Fall 03-07
	#	%	#	%	#	%	#	%	#	%			
Receiving Service	658	3%	731	3%	774	4%	626	3%	797	4%	21%	3%	3%
Not Receiving Service	22,473	97%	22,320	97%	20,962	96%	21,253	97%	21,650	96%	-4%	97%	97%
Total	23,131	100%	23,051	100%	21,736	100%	21,879	100%	22,447	100%	-3%	100%	100%

Source: SDCCD Information System

Mesa College Section II: Term Persistence Rates

This section of the Fact Book contains information on student term persistence rates. For purposes of this report, term persistence rate is the measure of students who were enrolled in a fall term as of census (eliminating drops and never attends prior to census) and who completed the term with a grade notation of (A, B, C, CR, D, F, I, NC, RD), then were enrolled as of census in the subsequent spring term and received a grade notation for that term. The information in this section includes five years of data and is broken down by gender, age and ethnicity.

Mesa College Section II: Term Persistence Rates

Overall Term Persistence: The average term persistence rate for first-time Mesa students was 58% between Fall 2003 and Fall 2007. Persistence rates dipped to a low of 54% in the Fall 2005 cohort and peaked to a high of 60% for the Fall 2006 cohort. Overall, persistence rates increased 1% from the Fall 2003 cohort to the Fall 2007 cohort.

Figure 2.1: Mesa College First-Time Student Term Persistence

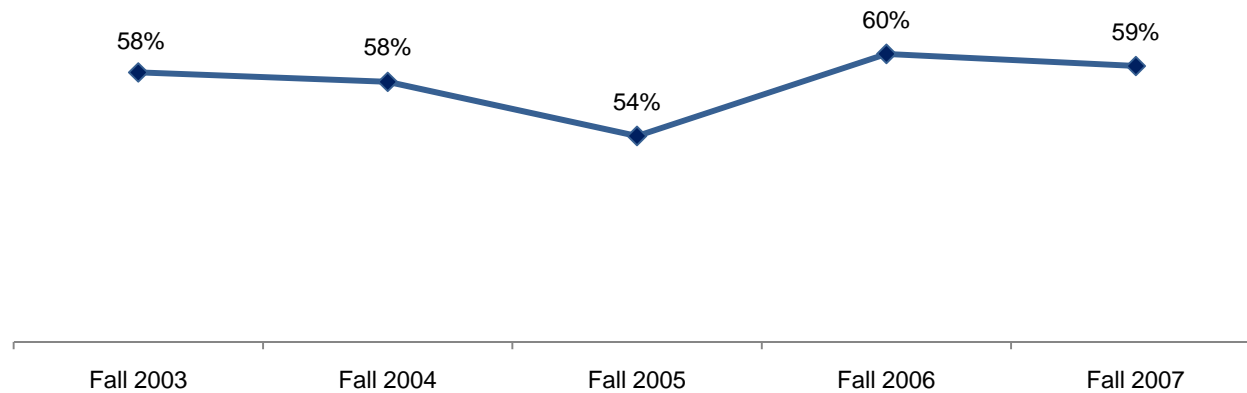


Table 2.1: Mesa College First-Time Student Term Persistence

Cohort	Fall	Spring	Persistence
Fall 2003	1,671	974	58%
Fall 2004	1,608	927	58%
Fall 2005	1,434	774	54%
Fall 2006	1,933	1,151	60%
Fall 2007	1,914	1,124	59%
Average			58%

Source: SDCCD Information System

Mesa College Section II: Term Persistence Rates

Term Persistence by Gender: On average, term persistence rates were comparable for males (58%) and females (57%) between Fall 2003 and Fall 2007 cohorts. The persistence rates trend for males and females was relatively the same compared to the overall Mesa student population persistence rates trend.

Figure 2.2: Mesa College First-Time Student Term Persistence by Gender

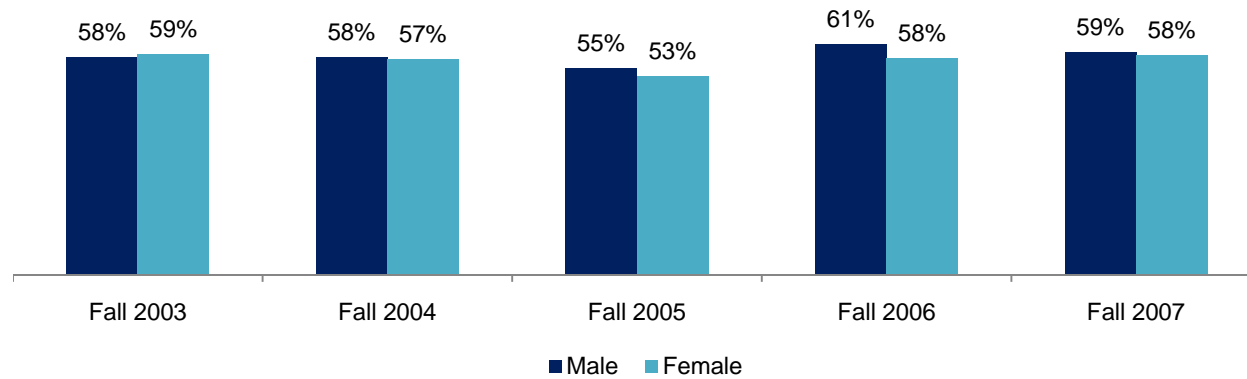


Table 2.2: Mesa College First-Time Student Term Persistence by Gender

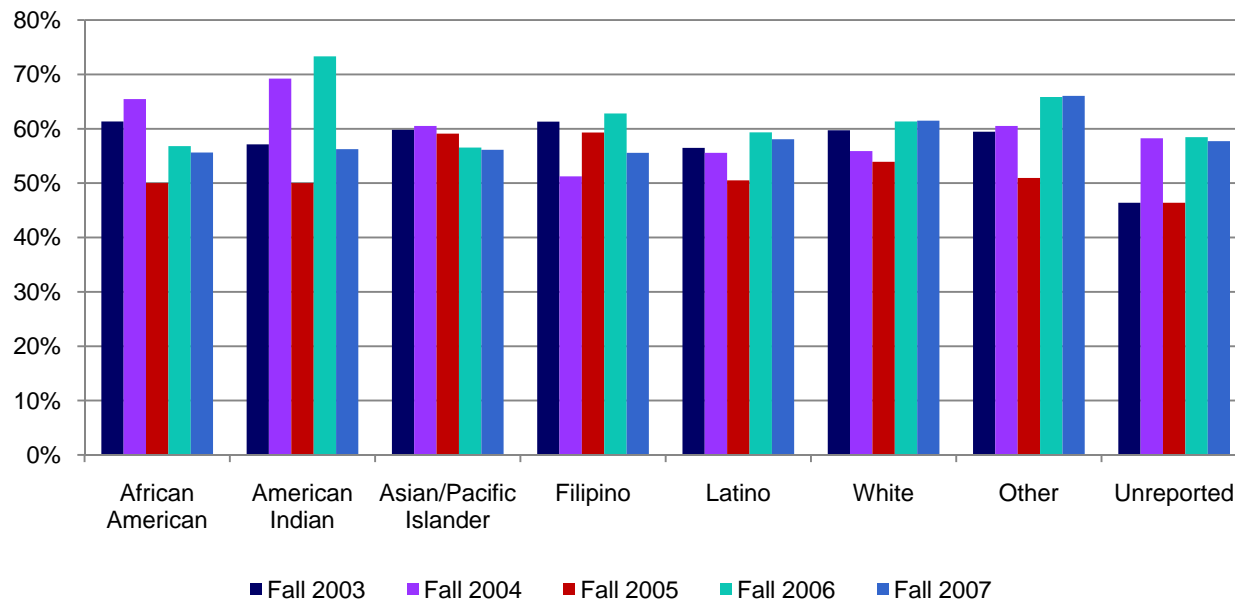
Cohort	Male			Female			Unreported		
	Fall	Spring	Persistence	Fall	Spring	Persistence	Fall	Spring	Persistence
Fall 2003	837	484	58%	831	488	59%	3	2	67%
Fall 2004	797	461	58%	810	465	57%	1	1	100%
Fall 2005	732	403	55%	702	371	53%	0	0	--
Fall 2006	975	598	61%	958	553	58%	0	0	--
Fall 2007	942	557	59%	972	567	58%	0	0	--
Average			58%			57%			75%

Source: SDCCD Information System

Mesa College Section II: Term Persistence Rates

Term Persistence by Ethnicity: The ethnic groups with the highest term persistence rates, on average, were American Indian students (63%), students who were categorized as 'Other' ethnicities (60%), and White students (59%). Persistence rates for African American and Filipino students showed a downward trend from 61% in the Fall 2003 cohort to 56% in the Fall 2007 cohort. Persistence rates peaked to a high of 73% for American Indians in the Fall 2006 cohort among all ethnic groups. Persistence rates for Latino and African American students peaked to a high of 59% and 65% respectively in Fall 2006 and Fall 2004 cohorts.

Figure 2.3: Mesa College First-Time Student Term Persistence by Ethnicity



Mesa College Section II: Term Persistence Rates

Table 2.3: Mesa College First-Time Student Term Persistence by Ethnicity

Cohort	African American			American Indian			Asian/Pacific Islander			Filipino		
	Fall	Spring	Persistence	Fall	Spring	Persistence	Fall	Spring	Persistence	Fall	Spring	Persistence
Fall 2003	119	73	61%	14	8	57%	316	189	60%	106	65	61%
Fall 2004	110	72	65%	13	9	69%	352	213	61%	80	41	51%
Fall 2005	76	38	50%	6	3	50%	379	224	59%	59	35	59%
Fall 2006	125	71	57%	15	11	73%	444	251	57%	78	49	63%
Fall 2007	133	74	56%	16	9	56%	408	229	56%	72	40	56%
Average			58%			63%			58%			58%

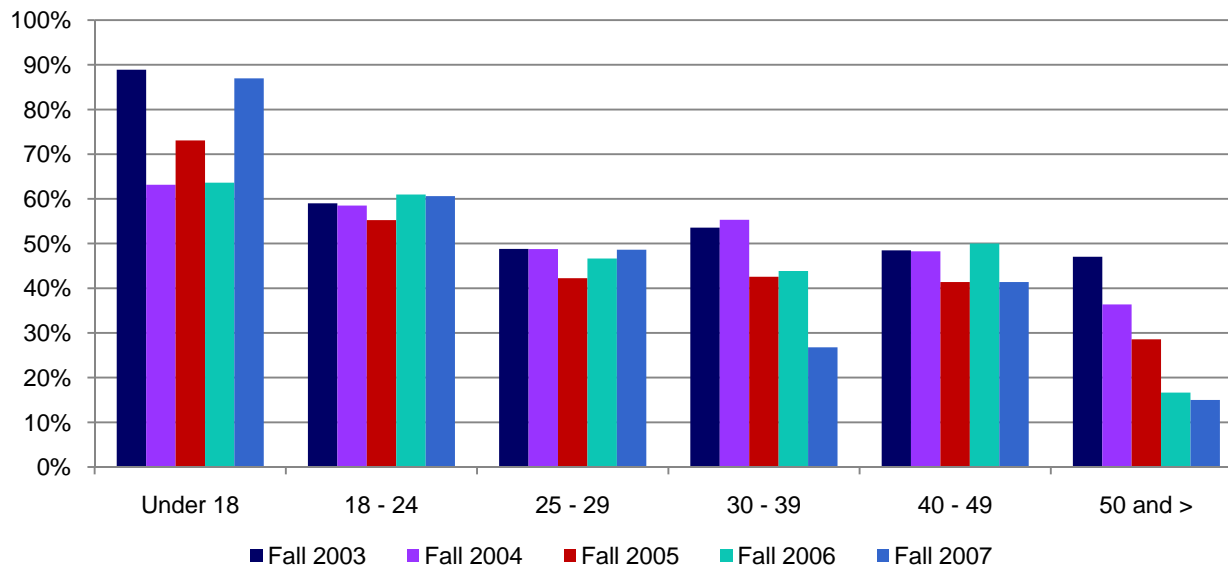
Cohort	Latino			White			Other			Unreported		
	Fall	Spring	Persistence	Fall	Spring	Persistence	Fall	Spring	Persistence	Fall	Spring	Persistence
Fall 2003	331	187	56%	623	372	60%	37	22	59%	125	58	46%
Fall 2004	324	180	56%	576	322	56%	38	23	61%	115	67	58%
Fall 2005	291	147	51%	473	255	54%	53	27	51%	97	45	46%
Fall 2006	401	238	59%	675	414	61%	41	27	66%	154	90	58%
Fall 2007	465	270	58%	644	396	61%	53	35	66%	123	71	58%
Average			56%			59%			60%			54%

Source: SDCCD Information System

Mesa College Section II: Term Persistence Rates

Term Persistence by Age: From the Fall 2003 cohort to the Fall 2007 cohort, term persistence rates were the highest for students under age 18 (75%), followed by students between ages 18-24 (59%), and students between ages 25 to 29 (47%), on average. With the exception of students between ages 18 and 24 years old, the other age groups displayed a general decreasing trend with students 50 years and older declining from a 47% average persistence rate in the Fall 2003 cohort to 15% in Fall 2007 cohort. Students ages 30-39 also displayed a 27% decline in persistence rates between Fall 2003 and Fall 2007 cohorts.

Figure 2.4: Mesa College First-Time Student Term Persistence by Age



Mesa College Section II: Term Persistence Rates

Table 2.4: Mesa College First-Time Student Term Persistence by Age

Cohort	Under 18			18 - 24			25 - 29		
	Fall	Spring	Persistence	Fall	Spring	Persistence	Fall	Spring	Persistence
Fall 2003	18	16	89%	1,463	863	59%	84	41	49%
Fall 2004	19	12	63%	1,420	831	59%	82	40	49%
Fall 2005	26	19	73%	1,247	689	55%	71	30	42%
Fall 2006	22	14	64%	1,743	1,063	61%	75	35	47%
Fall 2007	23	20	87%	1,714	1,039	61%	72	35	49%
Average			75%			59%			47%

Cohort	30 - 39			40 - 49			50 and >		
	Fall	Spring	Persistence	Fall	Spring	Persistence	Fall	Spring	Persistence
Fall 2003	56	30	54%	33	16	48%	17	8	47%
Fall 2004	47	26	55%	29	14	48%	11	4	36%
Fall 2005	47	20	43%	29	12	41%	14	4	29%
Fall 2006	57	25	44%	24	12	50%	12	2	17%
Fall 2007	56	15	27%	29	12	41%	20	3	15%
Average			44%			46%			28%

Source: SDCCD Information System

Mesa College Section III: Student Outcomes

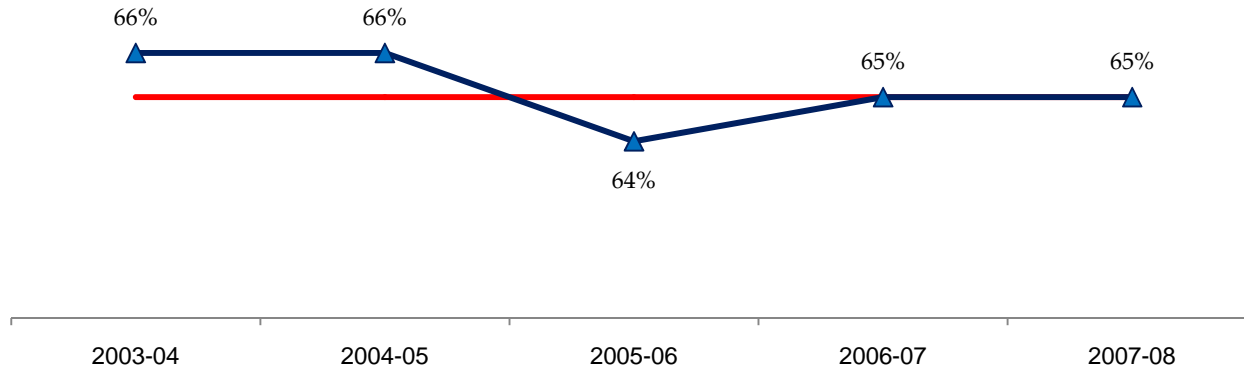
This section of the Fact Book contains information on various student outcomes which may be considered indirect assessments of student learning. The outcomes included in this section are: 1) Annual Student Success Rates, 2) Annual Retention Rates, 3) Annual GPA, 4) Annual Awards Conferred, and 5) Annual Transfers. All of the information in this section includes five years of data and is broken down by gender, age and ethnicity. The following describes in detail each of the outcomes listed.

- 1) **Success Rates.** The first outcome reported in this section is successful course completion, or student success rate. For purposes of this report, the success rate is the percentage of students who completed a course with a grade of A, B, C, or CR out of total enrollments as of census.
- 2) **Retention Rates.** The second outcome reported in this section is retention. For purposes of this report, the retention rate is the percentage of students who completed a course with a grade of A, B, C, D, F, CR, NC, I or RD out of total enrollments as of census.
- 3) **Annual GPA.** The third outcome reported in this section is annual GPA. For purposes of this report, the annual GPA is the cumulative grade point average of all courses taken for a grade in one academic year.
- 4) **Annual Awards Conferred.** The fourth outcome reported in this section is the annual awards conferred. For purposes of this report, the annual awards conferred are the total number of associate degrees and certificates awarded in a single academic year (summer, fall and spring).
- 5) **Annual Transfers.** The last outcome reported in this section is the number of annual students who transfer annually. For purposes of this report, the annual transfers are the total number of students who transferred during an academic year to either a CSU, UC, private or Out-of-State four-year institution.

Mesa College Section III: Student Outcomes (Success Rates)

Overall Success Rates: The annual success rates for Mesa College remained relatively stable from 2003/04 to 2007/08, with an average of 65%. This success rate average was comparable to the average success rate of all colleges districtwide (65%).

Figure 3.1: Mesa College Success Rates



*Red line marks All Colleges average 2003-08 success rate.

Table 3.1: Mesa College Success Rates

	2003-04	2004-05	2005-06	2006-07	2007-08	College Average 2003-08	All Colleges Average 2003-08
	%	%	%	%	%		
Average	66%	66%	64%	65%	65%	65%	65%

Source: SDCCD Information System

Note: Tutoring classes are excluded.

Mesa College Section III: Student Outcomes (Success Rates)

Success Rates by Gender: On average, female students (67%) had higher success rates compared to their male counterpart (63%) between 2003/04 and 2007/08. At Mesa College, female students had a slightly higher success rate than female students within all colleges in the district, while males had a slightly lower success rate when compared to male students within all colleges in the district. The success rates for female students at Mesa, on average, exceeded both the Mesa and the collegewide success rate averages of 65%, while success rates for male students fell below the same averages.

Figure 3.2: Mesa College Success Rates by Gender

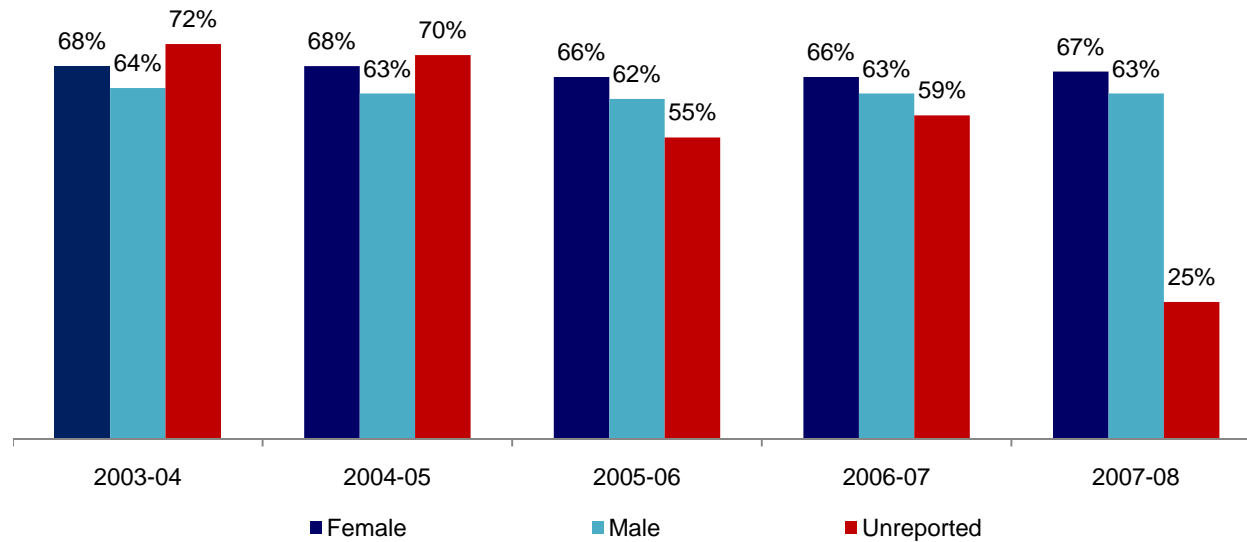


Table 3.2: Mesa College Success Rates by Gender

	2003-04	2004-05	2005-06	2006-07	2007-08	College Average 2003-08	All Colleges Average 2003-08
	%	%	%	%	%		
Female	68%	68%	66%	66%	67%	67%	66%
Male	64%	63%	62%	63%	63%	63%	64%
Unreported	72%	70%	55%	59%	25%	67%	62%
Average	66%	66%	64%	65%	65%	65%	65%

Source: SDCCD Information System

Note: Tutoring classes are excluded.

Mesa College Section III: Student Outcomes (Success Rates)

Success Rates by Ethnicity: On average, the ethnic groups with the highest success rates were Asian/Pacific Islander students (68%), White students (68%) and students categorized as ‘Other’ ethnicities (64%) between 2003/04 and 2007/08. Success rates for African American, American Indian, Filipino and Latino students fell below both the Mesa College and the all colleges in the district success rate average of 65%.

Figure 3.3: Mesa College Success Rates by Ethnicity

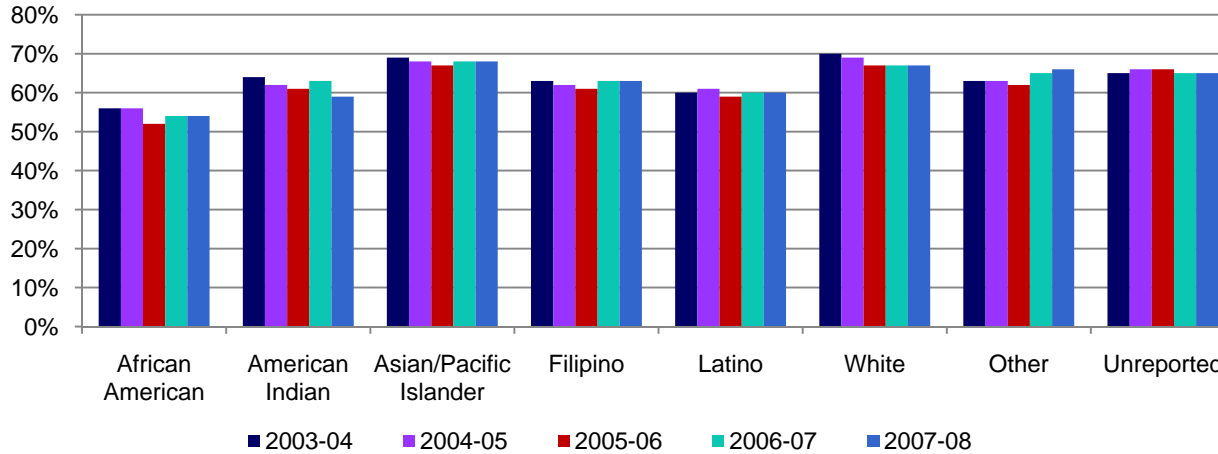


Table 3.3: Mesa College Success Rates by Ethnicity

	2003-04	2004-05	2005-06	2006-07	2007-08	College Average 2003-08	All Colleges Average 2003-08
	%	%	%	%	%		
African American	56%	56%	52%	54%	54%	55%	54%
American Indian	64%	62%	61%	63%	59%	62%	61%
Asian/Pacific Islander	69%	68%	67%	68%	68%	68%	69%
Filipino	63%	62%	61%	63%	63%	63%	65%
Latino	60%	61%	59%	60%	60%	60%	60%
White	70%	69%	67%	67%	67%	68%	69%
Other	63%	63%	62%	65%	66%	64%	63%
Unreported	65%	66%	66%	65%	65%	65%	66%
Average	66%	66%	64%	65%	65%	65%	65%

Source: SDCCD Information System

Note: Tutoring classes are excluded.

Mesa College Section III: Student Outcomes (Success Rates)

Success Rates by Age: On average, success rates increased as age increased. Students under age 18 generally showed a downward trend in success rates from 88% in 2003/04 to 51% in 2007/08.

Figure 3.4: Mesa College Success Rates by Age

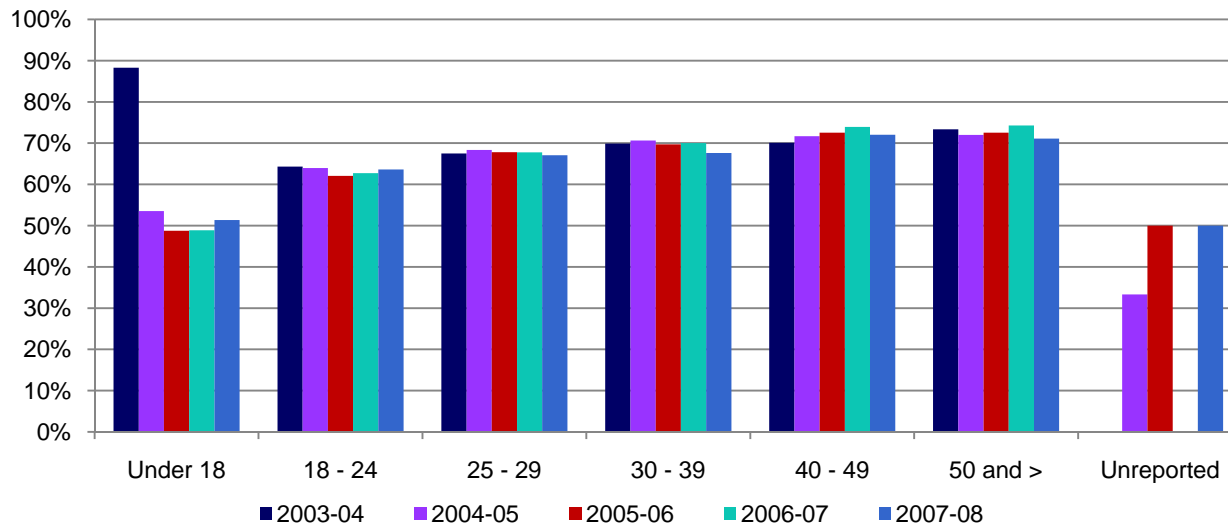


Table 3.4: Mesa College Success Rates by Age

	2003-04	2004-05	2005-06	2006-07	2007-08	College Average Average 2003-08	All Colleges Average 2003-08
	%	%	%	%	%		
Under 18	88%	54%	49%	49%	51%	57%	60%
18 - 24	64%	64%	62%	63%	64%	63%	62%
25 - 29	67%	68%	68%	68%	67%	68%	68%
30 - 39	70%	71%	70%	70%	68%	70%	70%
40 - 49	70%	72%	73%	74%	72%	72%	71%
50 and >	73%	72%	73%	74%	71%	73%	69%
Unreported	--	33%	50%	--	50%	43%	65%
Average	66%	66%	64%	65%	65%	65%	65%

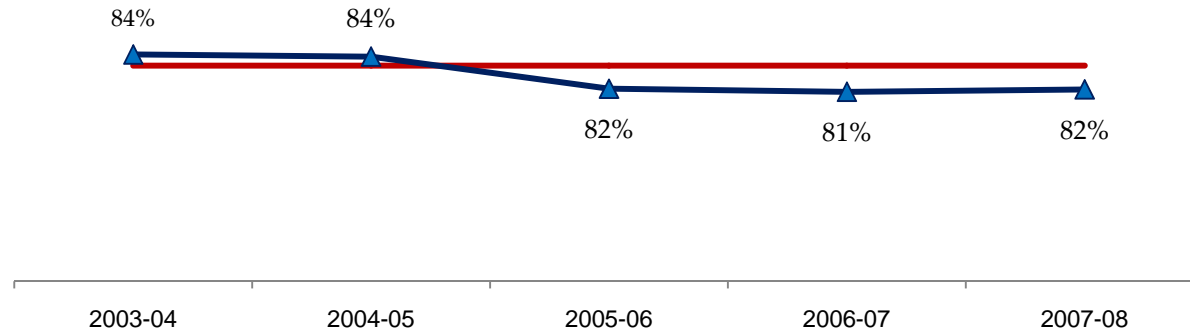
Source: SDCCD Information System

Note: Tutoring classes are excluded.

Mesa College Section III: Student Outcomes (Retention Rates)

Overall Retention Rates: The annual retention rates for Mesa College slightly dropped between 2003/04 and 2007/08, with an average of 82%. This retention rate average was comparable to the average retention rate for all colleges in the district (83%).

Figure 3.5: Mesa College Retention Rates



*Red line marks All Colleges average 2003-08 retention rate.

Table 3.5: Mesa College Retention Rates

	2003-04	2004-05	2005-06	2006-07	2007-08	College Average 2003-08	All Colleges Average 2003-08
	%	%	%	%	%		
Average	84%	84%	82%	81%	82%	82%	83%

Source: SDCCD Information System

Note: Tutoring classes are excluded.

Mesa College Section III: Student Outcomes (Retention Rates)

Retention Rates by Gender: For both male and female students, retention rates showed a downward trend from 2003/04 to 2007/08.

Figure 3.6: Mesa College Retention Rates by Gender

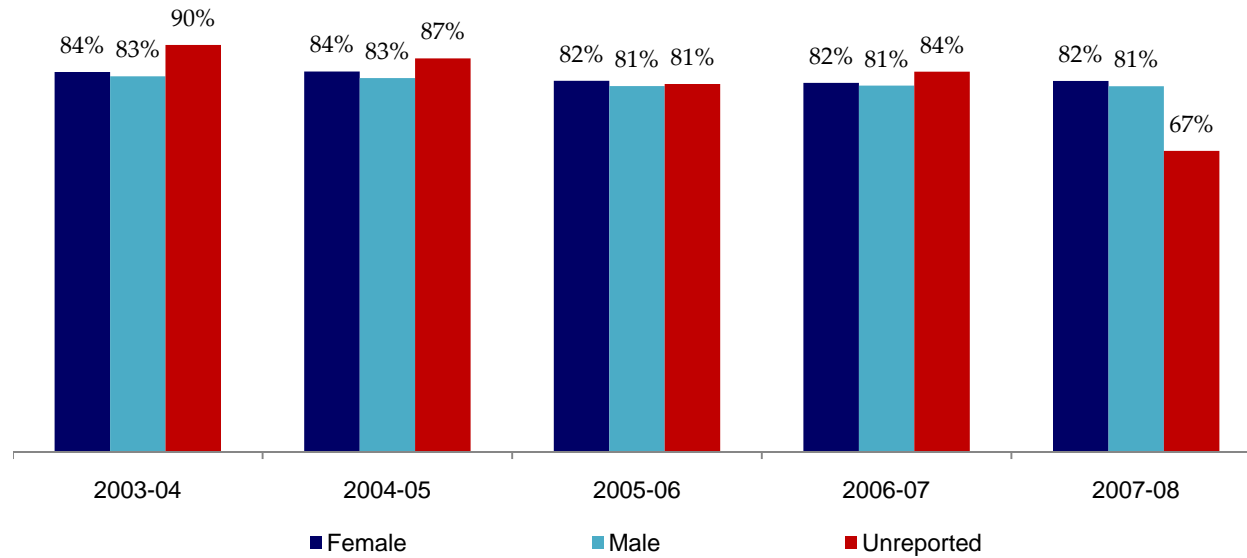


Table 3.6: Mesa College Retention Rates by Gender

	2003-04	2004-05	2005-06	2006-07	2007-08	College Average 2003-08	All Colleges Average 2003-08
	%	%	%	%	%		
Female	84%	84%	82%	82%	82%	83%	83%
Male	83%	83%	81%	81%	81%	82%	83%
Unreported	90%	87%	81%	84%	67%	87%	83%
Average	84%	84%	82%	81%	82%	82%	83%

Source: SDCCD Information System
 Note: Tutoring classes are excluded.

Mesa College Section III: Student Outcomes (Retention Rates)

Retention Rates by Ethnicity: From 2003/04 to 2007/08, the ethnic groups with the highest retention rates on average were Asian/Pacific Islander students (84%), White students (83%) and students categorized as 'Other' ethnicities (64%). African American, American Indian, Filipino and Latino students had lower retention rates compared to both the overall averages at Mesa and all colleges in the district (82% and 83%, respectively). Retention rates for Asian/Pacific Islander and White students equaled or exceeded the same averages. On average, when compared to all colleges in the district, Mesa College displayed similar retention rates among all ethnic groups.

Figure 3.7: Mesa College Retention Rates by Ethnicity

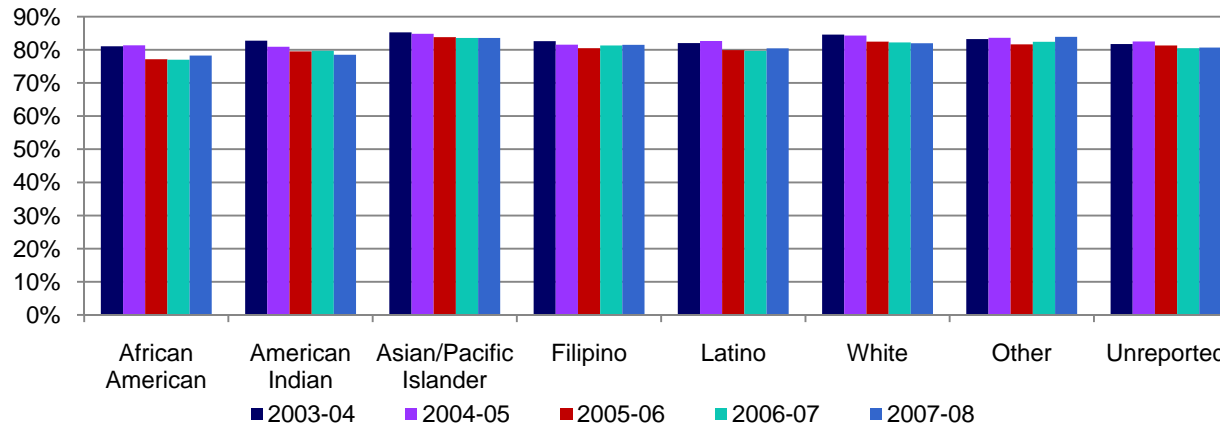


Table 3.7: Mesa College Retention Rates by Ethnicity

	2003-04	2004-05	2005-06	2006-07	2007-08	College Average 2003-08	All Colleges Average 2003-08
	%	%	%	%	%		
African American	81%	81%	77%	77%	78%	79%	79%
American Indian	83%	81%	80%	80%	79%	80%	81%
Asian/Pacific Islander	85%	85%	84%	84%	84%	84%	84%
Filipino	83%	82%	80%	81%	82%	82%	83%
Latino	82%	83%	80%	80%	80%	81%	82%
White	85%	84%	82%	82%	82%	83%	84%
Other	83%	84%	82%	82%	84%	83%	83%
Unreported	82%	82%	81%	80%	81%	81%	82%
Average	84%	84%	82%	81%	82%	82%	83%

Source: SDCCD Information System
 Note: Tutoring classes are excluded.

Mesa College Section III: Student Outcomes (Retention Rates)

Retention Rates by Age: From 2003/04 to 2007/08, students under age 18 and older than 50 years old, on average, had the highest retention rates of 94% and 84%, respectively. Students who were between ages 18-39 generally showed a downward trend in retention rates.

Figure 3.8: Mesa College Retention Rates by Age

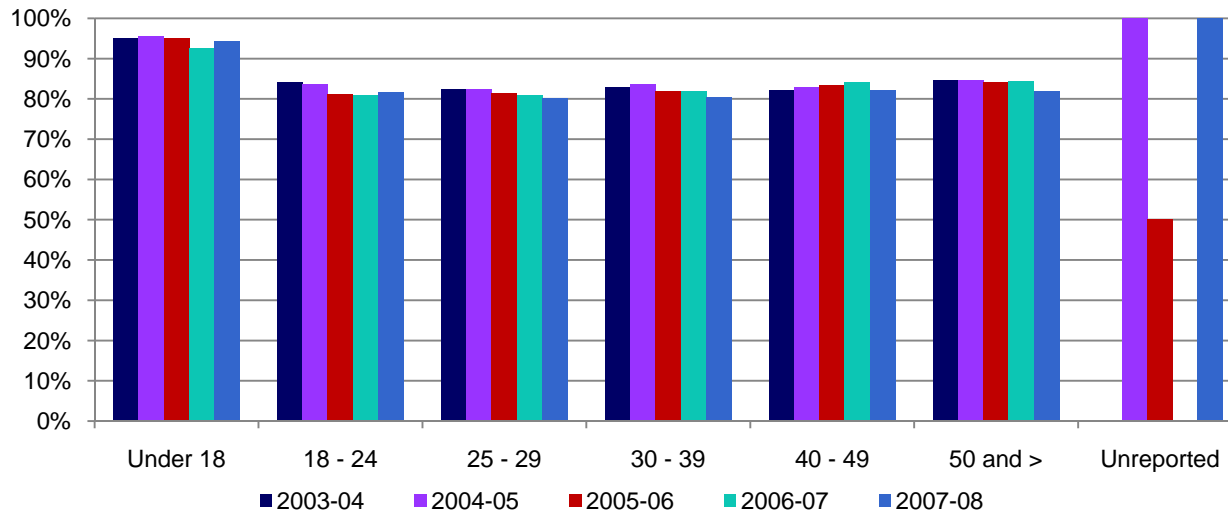


Table 3.8: Mesa College Retention Rates by Age

	2003-04	2004-05	2005-06	2006-07	2007-08	College Average 2003-08	All Colleges Average 2003-08
	%	%	%	%	%		
Under 18	95%	95%	95%	93%	94%	94%	93%
18 - 24	84%	84%	81%	81%	82%	82%	83%
25 - 29	82%	82%	81%	81%	80%	82%	82%
30 - 39	83%	83%	82%	82%	80%	82%	83%
40 - 49	82%	83%	83%	84%	82%	83%	84%
50 and >	85%	85%	84%	84%	82%	84%	84%
Unreported	--	100%	50%	--	100%	86%	81%
Average	84%	84%	82%	81%	82%	82%	83%

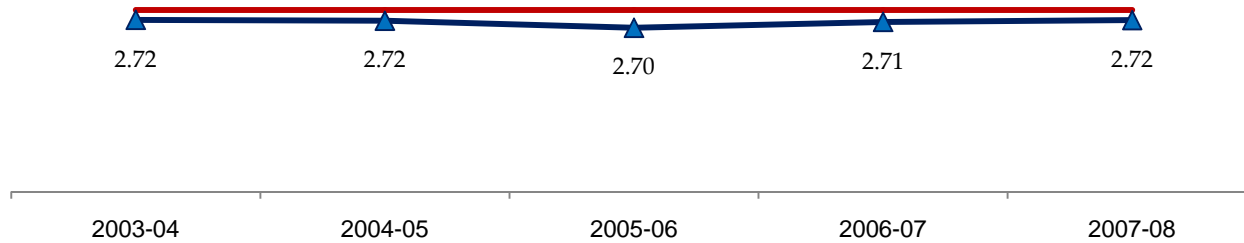
Source: SDCCD Information System

Note: Tutoring classes are excluded.

Mesa College Section III: Student Outcomes (Annual GPA)

Overall Annual GPA: The annual GPA for Mesa College remained relatively stable between 2003/04 and 2007/08, with an average of 2.71. Mesa's collegewide annual GPA average was slightly lower than the average GPA of all colleges in the district (2.75).

Figure 3.9: Mesa College Annual GPA



*Red line marks All Colleges average 2003-08 GPA.

Table 3.9: Mesa College Annual GPA

	2003-04	2004-05	2005-06	2006-07	2007-08	College Average 2003-08	All Colleges Average 2003-08
	#	#	#	#	#		
Average	2.72	2.72	2.70	2.71	2.72	2.71	2.75

Source: SDCCD Information System

Mesa College Section III: Student Outcomes (Annual GPA)

Annual GPA by Gender: From 2003/04 to 2007/08, female students, on average, had higher GPAs than their male counterpart (2.81 and 2.60, respectively). The annual GPA for male students fell below annual GPAs for the Mesa student population and all colleges in the district averages, while annual GPA for females exceeded both averages.

Figure 3.10: Mesa College Annual GPA by Gender

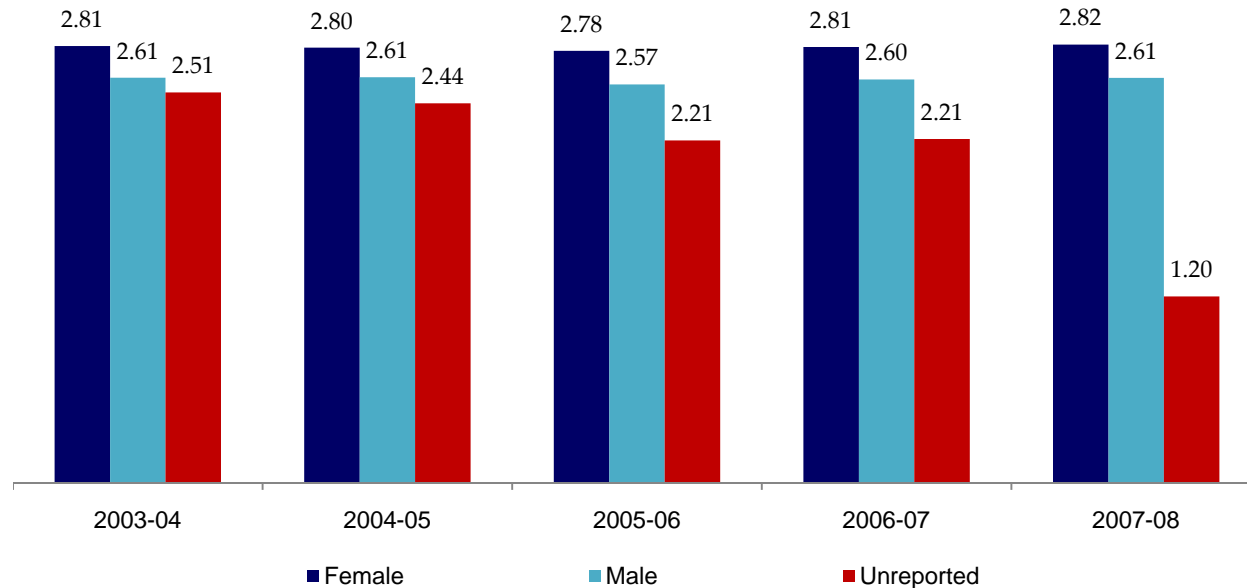


Table 3.10: Mesa College Annual GPA by Gender

	2003-04	2004-05	2005-06	2006-07	2007-08	College Average 2003-08	All Colleges Average 2003-08
	#	#	#	#	#		
Female	2.81	2.80	2.78	2.81	2.82	2.81	2.78
Male	2.61	2.61	2.57	2.60	2.61	2.60	2.71
Unreported	2.51	2.44	2.21	2.21	1.20	2.41	2.49
Average	2.72	2.71	2.68	2.71	2.72	2.71	2.75

Source: SDCCD Information System

Mesa College Section III: Student Outcomes (Annual GPA)

Annual GPA by Ethnicity: White students (2.83) and Asian/Pacific Islander students (2.77) had the highest GPAs on average between 2003/04 and 2007/08. Annual GPAs for African American, American Indian, Filipino and Latino students fell below the average annual GPAs for the Mesa student population and all colleges in the district (2.71 and 2.75, respectively), while GPAs for Asian/Pacific Islander and White students exceeded the same averages.

Figure 3.11: Mesa College Annual GPA by Ethnicity

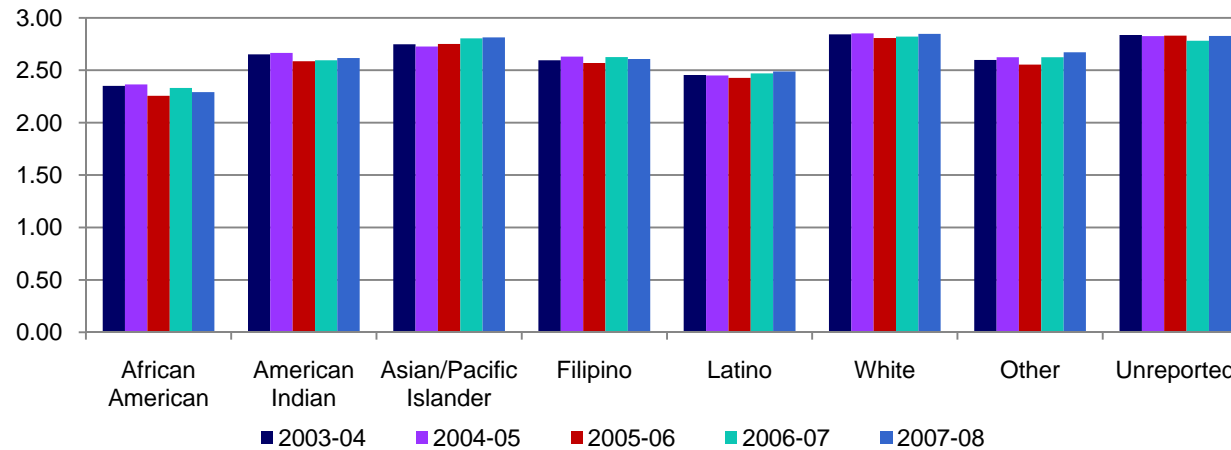


Table 3.11: Mesa Annual GPA by Ethnicity

	2003-04	2004-05	2005-06	2006-07	2007-08	College Average 2003-08	All Colleges Average 2003-08
	#	#	#	#	#		
African American	2.35	2.36	2.26	2.33	2.29	2.32	2.36
American Indian	2.65	2.67	2.59	2.60	2.62	2.63	2.68
Asian/Pacific Islander	2.75	2.73	2.75	2.80	2.81	2.77	2.82
Filipino	2.60	2.63	2.57	2.63	2.61	2.61	2.66
Latino	2.46	2.45	2.43	2.47	2.49	2.46	2.52
White	2.84	2.85	2.81	2.82	2.85	2.83	2.93
Other	2.60	2.62	2.55	2.62	2.67	2.61	2.61
Unreported	2.84	2.83	2.83	2.78	2.83	2.82	2.88
Average	2.72	2.71	2.68	2.71	2.72	2.71	2.75

Source: SDCCD Information System

Mesa College Section III: Student Outcomes (Annual GPA)

Annual GPA by Age: A general trend between 2003/04 and 2007/08 showed as age increased so did GPA. Students who were between ages 18-24 fell below the Mesa student population and all colleges in the district GPA averages (2.71 and 2.75, respectively). For students between ages 40 and 49, there was an upward trend in annual GPA of 3.11 in 2003/04 to 3.22 in 2007/08.

Figure 3.12: Mesa College Annual GPA by Age

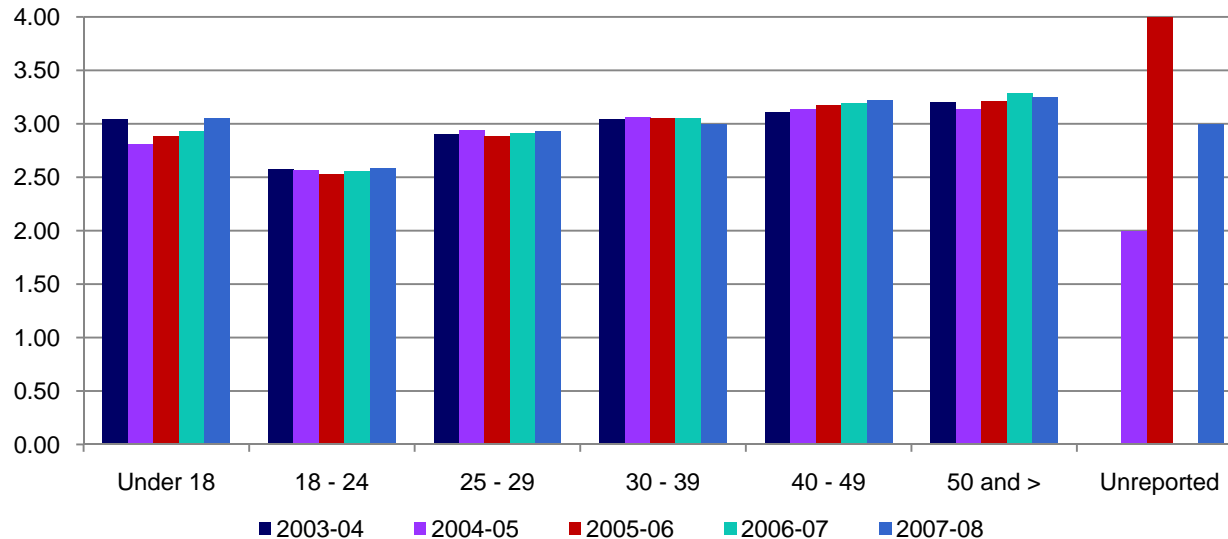


Table 3.12: Mesa College Annual GPA by Age

	2003-04	2004-05	2005-06	2006-07	2007-08	College Average 2003-08	All Colleges Average 2003-08
	#	#	#	#	#		
Under 18	3.04	2.81	2.88	2.93	3.06	2.97	2.90
18 - 24	2.58	2.57	2.53	2.56	2.58	2.56	2.56
25 - 29	2.90	2.94	2.89	2.92	2.93	2.92	2.93
30 - 39	3.04	3.06	3.05	3.06	3.00	3.04	3.07
40 - 49	3.11	3.14	3.18	3.19	3.22	3.17	3.18
50 and >	3.20	3.14	3.22	3.29	3.25	3.22	3.18
Unreported	--	2.00	4.00	--	3.00	3.00	3.25
Average	2.72	2.71	2.68	2.71	2.72	2.71	2.75

Source: SDCCD Information System

Mesa College Section III: Student Outcomes (Annual Awards Conferred)

Annual Awards Conferred: Overall, the trends for the type of awards conferred showed large fluctuations between 2003/04 and 2007/08. On average, 78% of the total awards conferred at Mesa College were associate degrees. The number of certificates requiring 30, to less than 59 units, showed the greatest increase of 59%, from 102 in 2003/04 to 162 in 2007/08. In contrast, the mini-certificates that require 18 units or less decreased 46%, from 188 in 2003/04 to 101 in 2007/08 and showed the greatest disparity of awards conferred at Mesa College (10%) compared to all colleges in the district (18%). However, the number of associate degrees conferred at Mesa College, on average, was 10% higher than the number of associate degrees conferred within all colleges in the district.

Figure 3.13: Mesa College Annual Awards Conferred

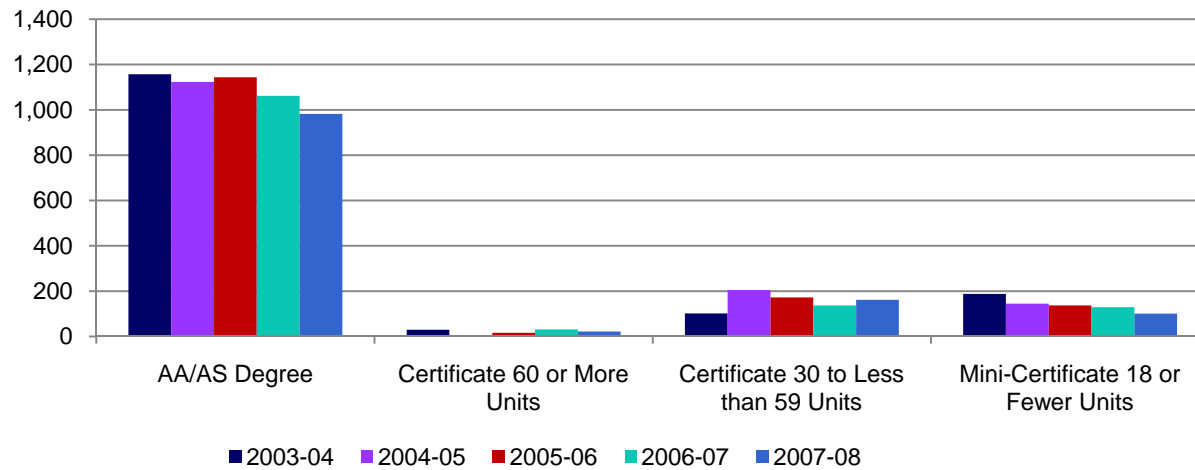


Table 3.13: Mesa College Annual Conferred Awards

	2003-04		2004-05		2005-06		2006-07		2007-08		% Change Fall 03 and 07	College Average Fall 03-07	All Colleges Average Fall 03-07
	#	%	#	%	#	%	#	%	#	%			
AA/AS Degree	1,157	78%	1,123	76%	1,144	78%	1,062	78%	982	78%	-15%	78%	68%
Certificate 60 or More Units	30	2%	5	0%	16	1%	31	2%	22	2%	-27%	1%	1%
Certificate 30 to Less than 59 Units	102	7%	205	14%	172	12%	137	10%	162	13%	59%	11%	14%
Mini-Certificate 18 or Fewer Units	188	13%	145	10%	137	9%	129	9%	101	8%	-46%	10%	18%
Total	1,477	100%	1,478	100%	1,469	100%	1,359	100%	1,267	100%	-14%	100%	100%

Source: SDCCD Information System

Mesa College Section III: Student Outcomes (Annual Awards Conferred)

Annual Awards Conferred by Gender: Of the total awards conferred at Mesa College, female students (58%) received more associate degrees, on average, than their male student (42%) counterpart between 2003/04 and 2007/08. For certificates requiring 30 to less than 59 units, both males and females showed an increased trend of 33% and 73%, respectively, between 2003/04 and 2007/08. This was in contrast to all the other types of awards conferred, which displayed a decreasing trend between 2003/04 and 2007/08. From 2003/04 to 2007/08, male students consistently earned a disproportionately low number of awards at Mesa College compared to all colleges in the district. Females exhibited the opposite pattern.

Figure 3.14.1: Mesa College Annual AA/AS Degrees by Gender

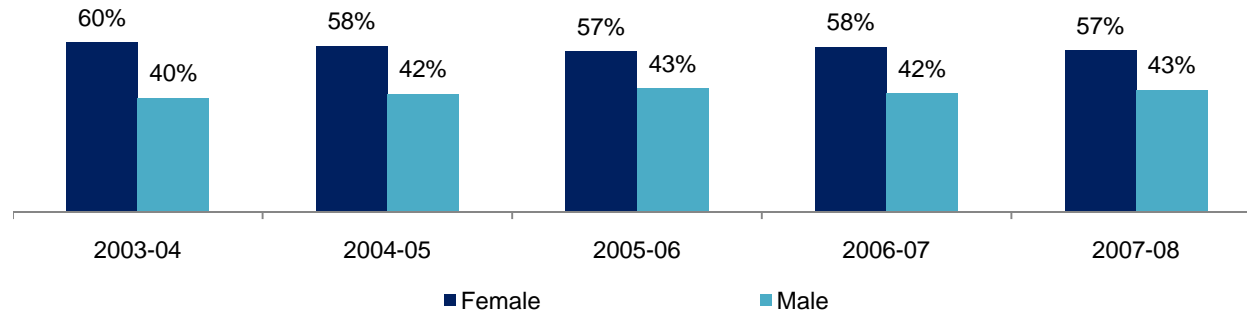
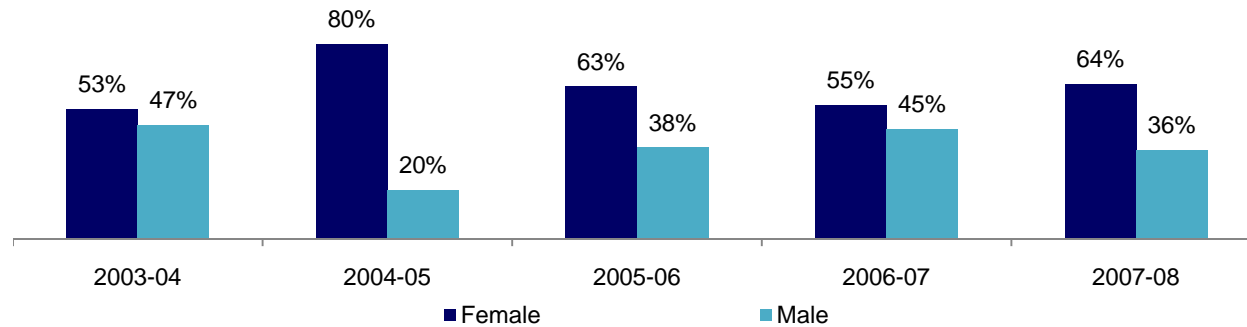


Figure 3.14.2: Mesa College Annual Certificates 60 or More Units by Gender



Mesa College Section III: Student Outcomes (Annual Awards Conferred)

Figure 3.14.3: Mesa College Annual Certificates 30 to Less than 59 Units by Gender

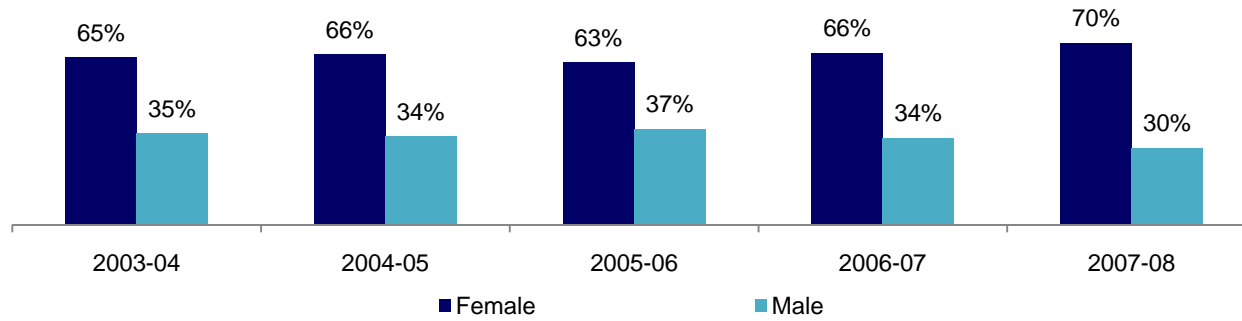
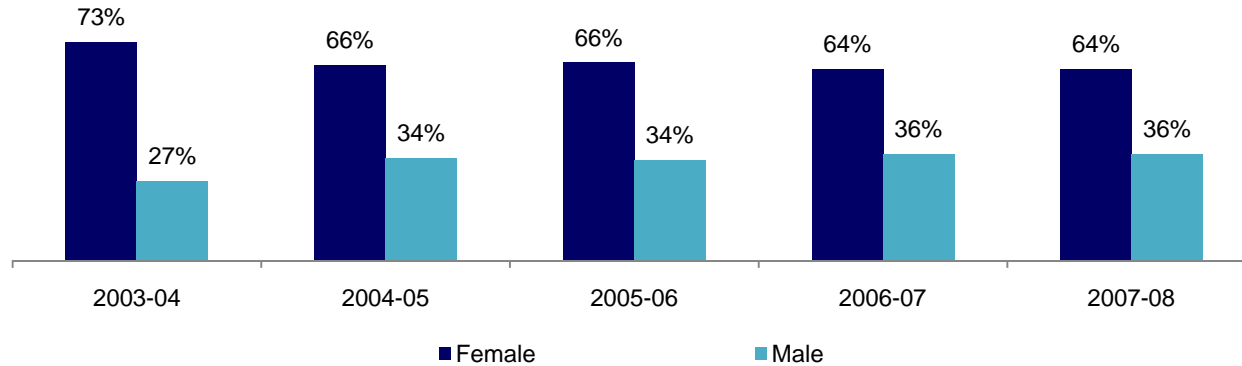


Figure 3.14.4: Mesa College Annual Mini-Certificates 18 or Fewer Units by Gender



Mesa College Section III: Student Outcomes (Annual Awards Conferred)

Table 3.14: Mesa College Annual Awards Conferred by Gender

		2003-04		2004-05		2005-06		2006-07		2007-08		% Change Fall 03 and 07	College Average Fall 03-07	All Colleges Average Fall 03-07
		#	%	#	%	#	%	#	%	#	%			
AA/AS Degree	Female	692	60%	656	58%	647	57%	619	58%	559	57%	-19%	58%	57%
	Male	465	40%	467	42%	497	43%	443	42%	423	43%	-9%	42%	43%
	Total	1,157	100%	1,123	100%	1,144	100%	1,062	100%	982	100%	-15%	100%	100%
Certificate 60 or More Units	Female	16	53%	4	80%	10	63%	17	55%	14	64%	-13%	59%	50%
	Male	14	47%	1	20%	6	38%	14	45%	8	36%	-43%	41%	50%
	Total	30	100%	5	100%	16	100%	31	100%	22	100%	-27%	100%	100%
Certificate 30 to Less than 59 Units	Female	66	65%	135	66%	108	63%	91	66%	114	70%	73%	66%	47%
	Male	36	35%	70	34%	64	37%	46	34%	48	30%	33%	34%	53%
	Total	102	100%	205	100%	172	100%	137	100%	162	100%	59%	100%	100%
Mini- Certificate 18 or Fewer Units	Female	138	73%	95	66%	91	66%	83	64%	65	64%	-53%	67%	45%
	Male	50	27%	50	34%	46	34%	46	36%	36	36%	-28%	33%	55%
	Total	188	100%	145	100%	137	100%	129	100%	101	100%	-46%	100%	100%

Source: SDCCD Information System

Mesa College Section III: Student Outcomes (Annual Awards Conferred)

Annual Awards Conferred by Ethnicity: The number of associate degrees conferred at Mesa College increased for American Indians, African Americans, and Latinos (38%, 20% and 9%, respectively) between 2003/04 and 2007/08. From 2003/04 to 2007/08, White students received the most awards across all award categories. Asian/Pacific Islanders students and Latino students had the second highest number of associate degrees and certificates requiring 60 or more units conferred. These trends reflect the fact that these three ethnicities (White, Asian/Pacific Islanders and Latino students) constitute the greatest proportions of the student headcount population at Mesa College. Latino students at Mesa College were consistently underrepresented across all types of awards conferred when compared to all colleges in the district, while Asian/Pacific Islanders were overrepresented.

Figure 3.15.1: Mesa College Annual AA/AS Degrees by Ethnicity

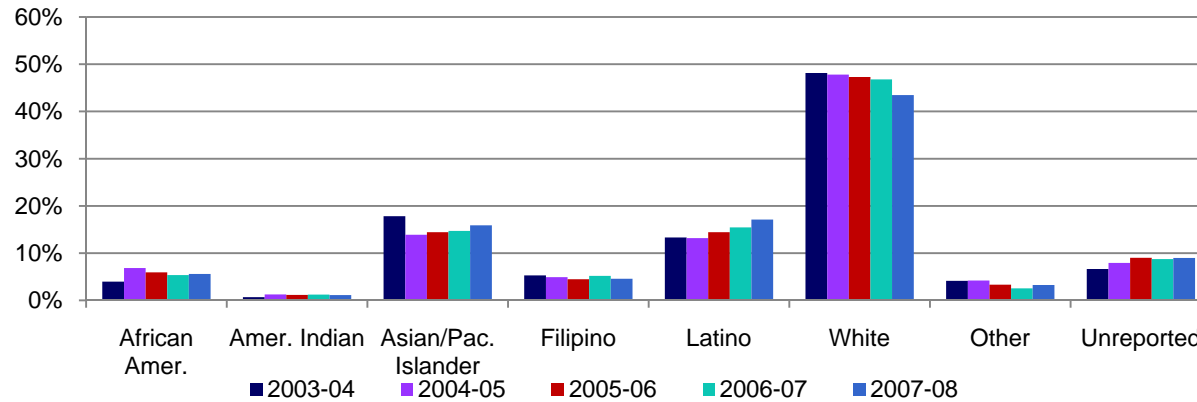
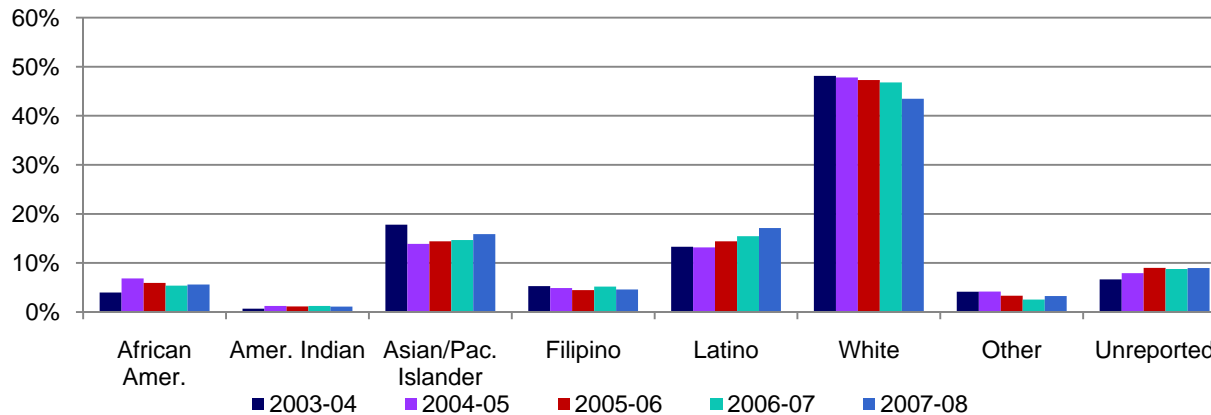


Figure 3.15.2: Mesa College Annual Certificates 60 or More Units by Ethnicity



Mesa College Section III: Student Outcomes (Annual Awards Conferred)

Figure 3.15.3: Mesa College Annual Certificates 30 to Less than 59 Units by Ethnicity

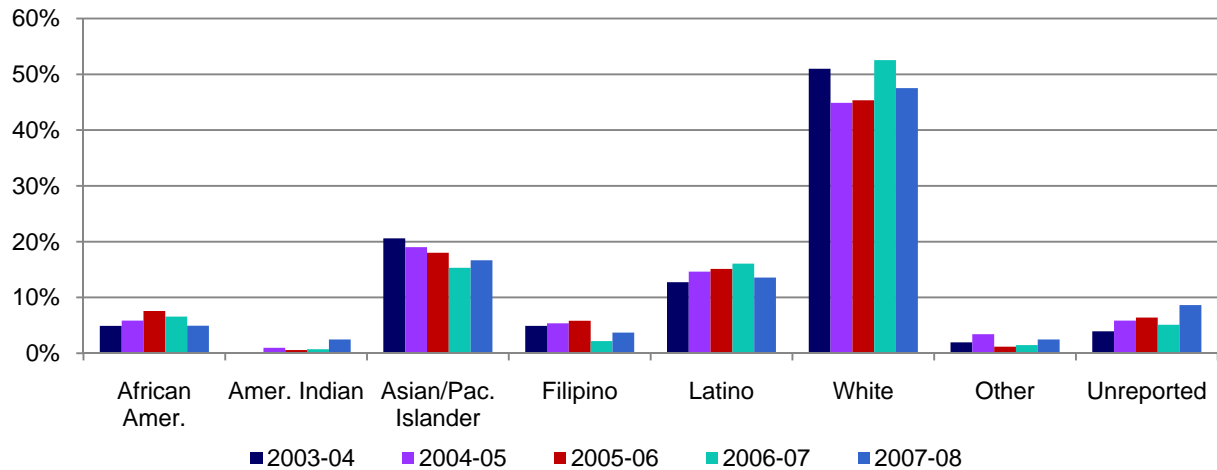
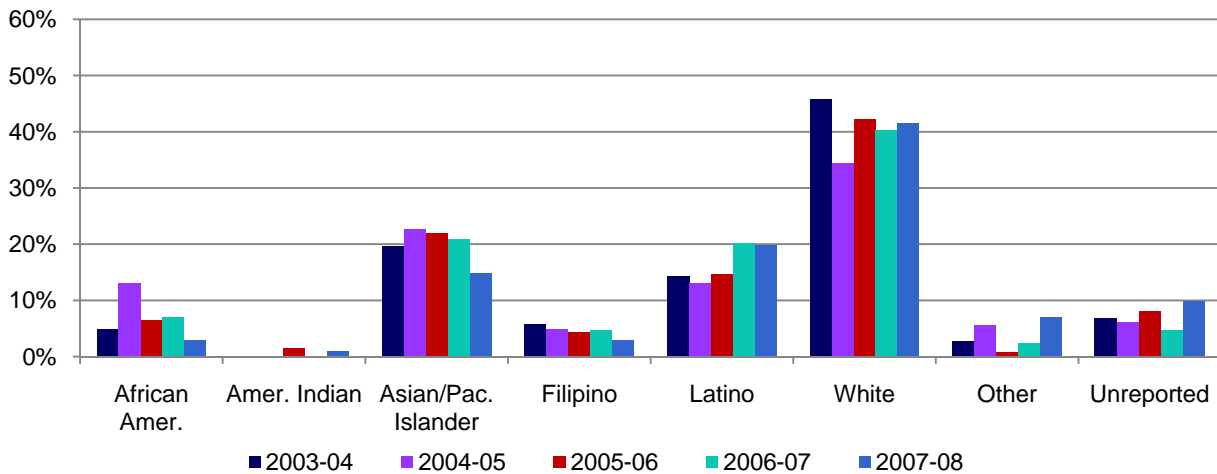


Figure 3.15.4: Mesa College Annual Mini-Certificates 18 or Fewer Units by Ethnicity



Mesa College Section III: Student Outcomes (Annual Awards Conferred)

Table 3.15.1: Mesa College Annual Awards Conferred by Ethnicity

		2003-04		2004-05		2005-06		2006-07		2007-08		% Change Fall 03 and 07	College Average Fall 03-07	All Colleges Average Fall 03-07
		#	%	#	%	#	%	#	%	#	%			
AA/AS Degree	African Amer.	46	4%	77	7%	68	6%	57	5%	55	6%	20%	6%	9%
	Amer. Indian	8	1%	14	1%	13	1%	13	1%	11	1%	38%	1%	1%
	Asian/Pac. Islander	206	18%	156	14%	165	14%	156	15%	156	16%	-24%	15%	13%
	Filipino	61	5%	55	5%	51	4%	55	5%	45	5%	-26%	5%	7%
	Latino	154	13%	148	13%	165	14%	164	15%	168	17%	9%	15%	17%
	White	557	48%	537	48%	541	47%	497	47%	427	43%	-23%	47%	41%
	Other	48	4%	47	4%	38	3%	27	3%	32	3%	-33%	4%	4%
	Unreported	77	7%	89	8%	103	9%	93	9%	88	9%	14%	8%	8%
	Total	1,157	100%	1,123	100%	1,144	100%	1,062	100%	982	100%	-15%	100%	100%
Certificate 60 or More Units	African Amer.	2	7%	0	0%	1	6%	1	3%	1	5%	-50%	5%	5%
	Amer. Indian	0	0%	0	0%	0	0%	0	0%	0	0%	--	0%	0%
	Asian/Pac. Islander	3	10%	1	20%	3	19%	4	13%	3	14%	0%	13%	11%
	Filipino	4	13%	0	0%	0	0%	4	13%	4	18%	0%	12%	10%
	Latino	3	10%	0	0%	4	25%	3	10%	3	14%	0%	13%	15%
	White	17	57%	4	80%	4	25%	14	45%	7	32%	-59%	44%	48%
	Other	1	3%	0	0%	0	0%	1	3%	1	5%	0%	3%	2%
	Unreported	0	0%	0	0%	4	25%	4	13%	3	14%	--	11%	9%
	Total	30	100%	5	100%	16	100%	31	100%	22	100%	-27%	100%	100%

Source: SDCCD Information System

Mesa College Section III: Student Outcomes (Annual Awards Conferred)

Table 3.15.2: Mesa College Annual Awards Conferred by Ethnicity

		2003-04		2004-05		2005-06		2006-07		2007-08		% Change Fall 03 and 07	College Average Fall 03-07	All Colleges Average Fall 03-07
		#	%	#	%	#	%	#	%	#	%			
Certificate 30 to Less than 59 Units	African Amer.	5	5%	12	6%	13	8%	9	7%	8	5%	60%	6%	9%
	Amer. Indian	0	0%	2	1%	1	1%	1	1%	4	2%	--	1%	1%
	Asian/Pac. Islander	21	21%	39	19%	31	18%	21	15%	27	17%	29%	18%	13%
	Filipino	5	5%	11	5%	10	6%	3	2%	6	4%	20%	4%	5%
	Latino	13	13%	30	15%	26	15%	22	16%	22	14%	69%	15%	17%
	White	52	51%	92	45%	78	45%	72	53%	77	48%	48%	48%	45%
	Other	2	2%	7	3%	2	1%	2	1%	4	2%	100%	2%	3%
	Unreported	4	4%	12	6%	11	6%	7	5%	14	9%	250%	6%	7%
	Total	102	100%	205	100%	172	100%	137	100%	162	100%	59%	100%	100%
Mini- Certificate 18 or Fewer Units	African Amer.	9	5%	19	13%	9	7%	9	7%	3	3%	-67%	7%	9%
	Amer. Indian	0	0%	0	0%	2	1%	0	0%	1	1%	--	0%	1%
	Asian/Pac. Islander	37	20%	33	23%	30	22%	27	21%	15	15%	-59%	20%	13%
	Filipino	11	6%	7	5%	6	4%	6	5%	3	3%	-73%	5%	5%
	Latino	27	14%	19	13%	20	15%	26	20%	20	20%	-26%	16%	21%
	White	86	46%	50	34%	58	42%	52	40%	42	42%	-51%	41%	40%
	Other	5	3%	8	6%	1	1%	3	2%	7	7%	40%	3%	3%
	Unreported	13	7%	9	6%	11	8%	6	5%	10	10%	-23%	7%	6%
	Total	188	100%	145	100%	137	100%	129	100%	101	100%	-46%	100%	100%

Source: SDCCD Information System

Mesa College Section III: Student Outcomes (Annual Awards Conferred)

Annual Awards Conferred by Age: Approximately three-quarters of the total number of associate degrees awarded between 2003/04 and 2007/08 were to students between ages 18-29 years old. Students between ages 25 and 29 years old consistently displayed a trend of receiving approximately one-quarter of the awards within each award category. Students ages 18-24 were overrepresented in the number of awards received at Mesa College when compared to all colleges in the district. However, students ages 40-49 showed the greatest disparity in the number of awards received between 2003/04 and 2007/08.

Figure 3.16.1: Mesa College Annual AA/AS Degrees by Age

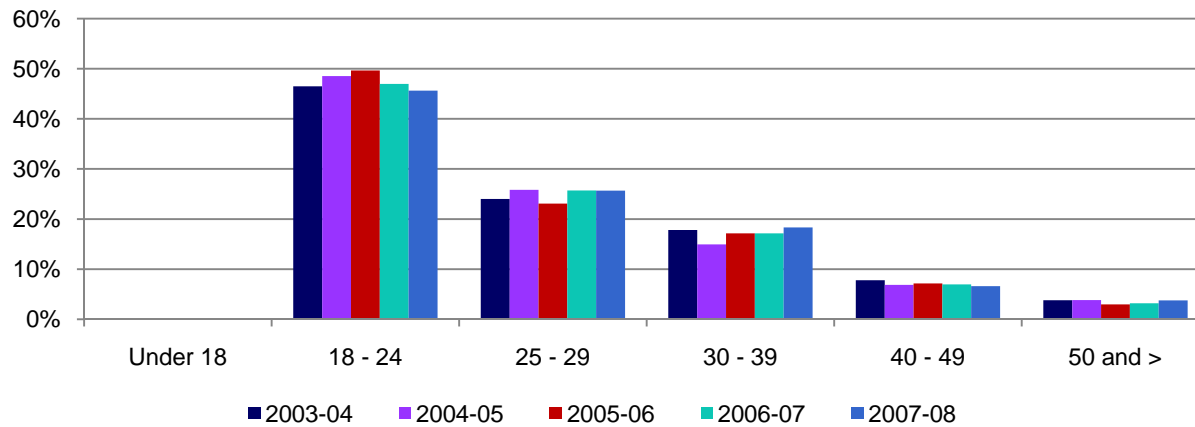
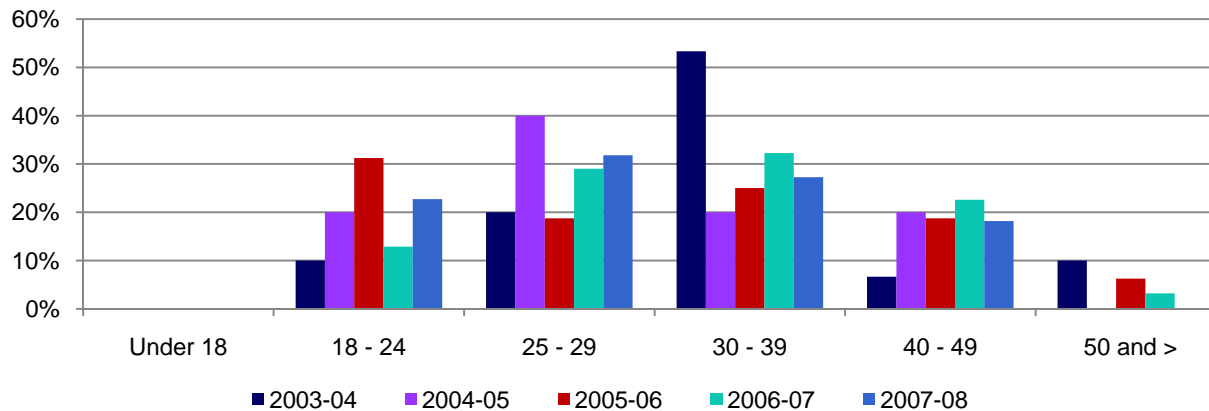


Figure 3.16.2: Mesa College Annual Certificates 60 or More Units by Age



Mesa College Section III: Student Outcomes (Annual Awards Conferred)

Figure 3.16.3: Mesa College Annual Certificates 30 to Less than 59 Units by Age

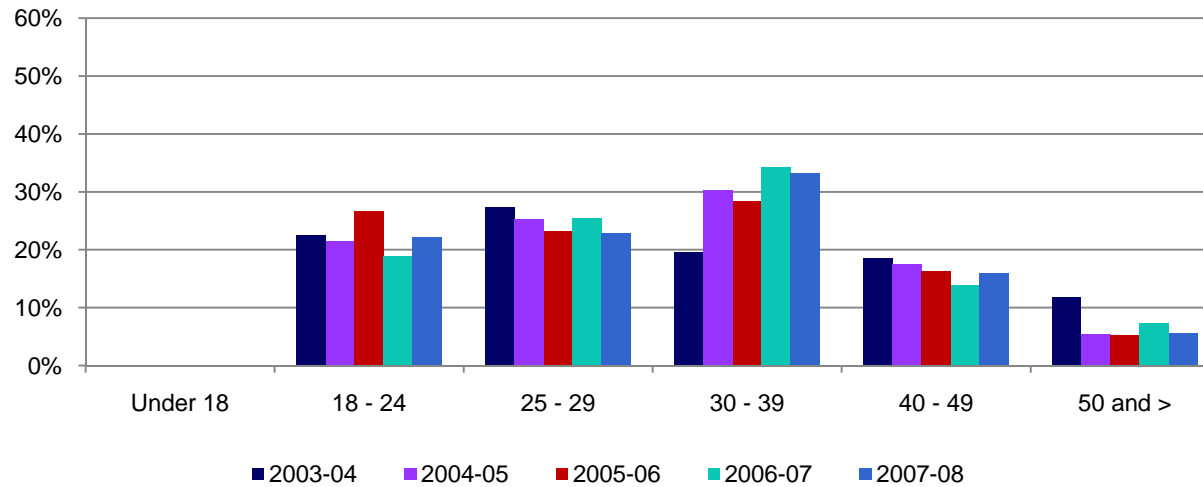
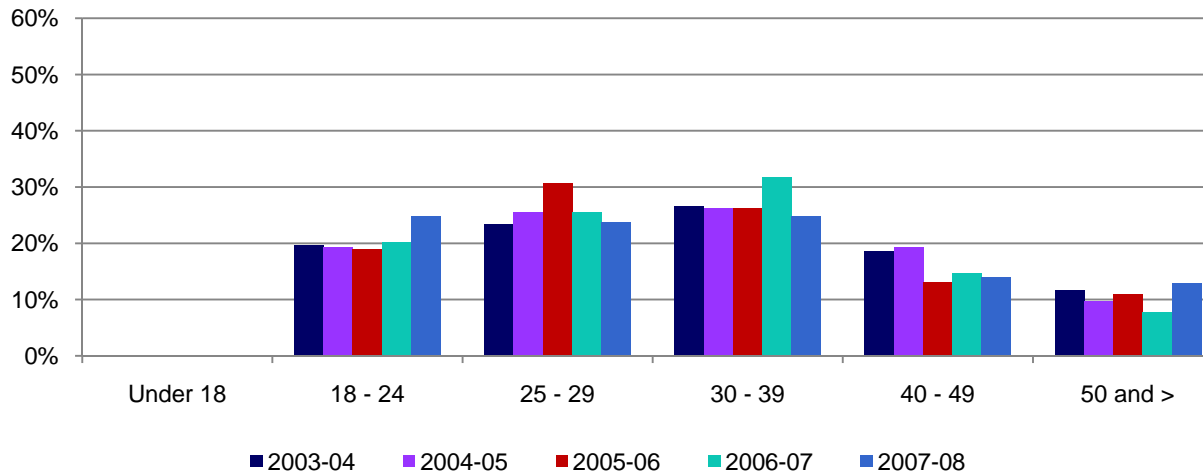


Figure 3.16.4: Mesa College Annual Mini-Certificates 18 or Fewer Units by Age



Mesa College Section III: Student Outcomes (Annual Awards Conferred)

Table 3.16.1: Mesa College Annual Awards Conferred by Age

		2003-04		2004-05		2005-06		2006-07		2007-08		% Change Fall 03 and 07	College Average Fall 03-07	All Colleges Average Fall 03-07
		#	%	#	%	#	%	#	%	#	%			
AA/AS Degree	Under 18	0	0%	0	0%	0	0%	0	0%	0	0%	--	0%	0%
	18 - 24	538	46%	545	49%	568	50%	499	47%	448	46%	-17%	48%	40%
	25 - 29	278	24%	290	26%	264	23%	273	26%	252	26%	-9%	25%	26%
	30 - 39	206	18%	168	15%	196	17%	182	17%	180	18%	-13%	17%	20%
	40 - 49	90	8%	77	7%	82	7%	74	7%	65	7%	-28%	7%	10%
	50 and >	44	4%	43	4%	34	3%	34	3%	37	4%	-16%	4%	5%
	Unreported	1	0%	0	0%	0	0%	0	0%	0	0%	-100%	0%	0%
	Total	1,157	100%	1,123	100%	1,144	100%	1,062	100%	982	100%	-15%	100%	100%
Certificate 60 or More Units	Under 18	0	0%	0	0%	0	0%	0	0%	0	0%	--	0%	0%
	18 - 24	3	10%	1	20%	5	31%	4	13%	5	23%	67%	17%	16%
	25 - 29	6	20%	2	40%	3	19%	9	29%	7	32%	17%	26%	29%
	30 - 39	16	53%	1	20%	4	25%	10	32%	6	27%	-63%	36%	37%
	40 - 49	2	7%	1	20%	3	19%	7	23%	4	18%	100%	16%	15%
	50 and >	3	10%	0	0%	1	6%	1	3%	0	0%	-100%	5%	4%
	Unreported	0	0%	0	0%	0	0%	0	0%	0	0%	--	0%	0%
	Total	30	100%	5	100%	16	100%	31	100%	22	100%	-27%	100%	100%

Source: SDCCD Information System

Mesa College Section III: Student Outcomes (Annual Awards Conferred)

Table 3.16.2: Mesa College Annual Awards Conferred by Age

		2003-04		2004-05		2005-06		2006-07		2007-08		% Change Fall 03 and 07	College Average Fall 03-07	All Colleges Average Fall 03-07
		#	%	#	%	#	%	#	%	#	%			
Certificate 30 to Less than 59 Units	Under 18	0	0%	0	0%	0	0%	0	0%	0	0%	--	0%	0%
	18 - 24	23	23%	44	21%	46	27%	26	19%	36	22%	57%	22%	17%
	25 - 29	28	27%	52	25%	40	23%	35	26%	37	23%	32%	25%	22%
	30 - 39	20	20%	62	30%	49	28%	47	34%	54	33%	170%	30%	30%
	40 - 49	19	19%	36	18%	28	16%	19	14%	26	16%	37%	16%	21%
	50 and >	12	12%	11	5%	9	5%	10	7%	9	6%	-25%	7%	10%
	Unreported	0	0%	0	0%	0	0%	0	0%	0	0%	--	0%	0%
	Total	102	100%	205	100%	172	100%	137	100%	162	100%	59%	100%	100%
Mini- Certificate 18 or Fewer Units	Under 18	0	0%	0	0%	0	0%	0	0%	0	0%	--	0%	0%
	18 - 24	37	20%	28	19%	26	19%	26	20%	25	25%	-32%	20%	22%
	25 - 29	44	23%	37	26%	42	31%	33	26%	24	24%	-45%	26%	24%
	30 - 39	50	27%	38	26%	36	26%	41	32%	25	25%	-50%	27%	27%
	40 - 49	35	19%	28	19%	18	13%	19	15%	14	14%	-60%	16%	17%
	50 and >	22	12%	14	10%	15	11%	10	8%	13	13%	-41%	11%	9%
	Unreported	0	0%	0	0%	0	0%	0	0%	0	0%	--	0%	0%
	Total	188	100%	145	100%	137	100%	129	100%	101	100%	-46%	100%	100%

Source: SDCCD Information System

Mesa College Section III: Student Outcomes (Annual Transfers)

Annual Transfers: The annual transfer volume for Mesa College increased 14%, from 6,144 in 2003/04 to 7,025 in 2007/08.

Figure 3.17: Mesa College Annual Transfers

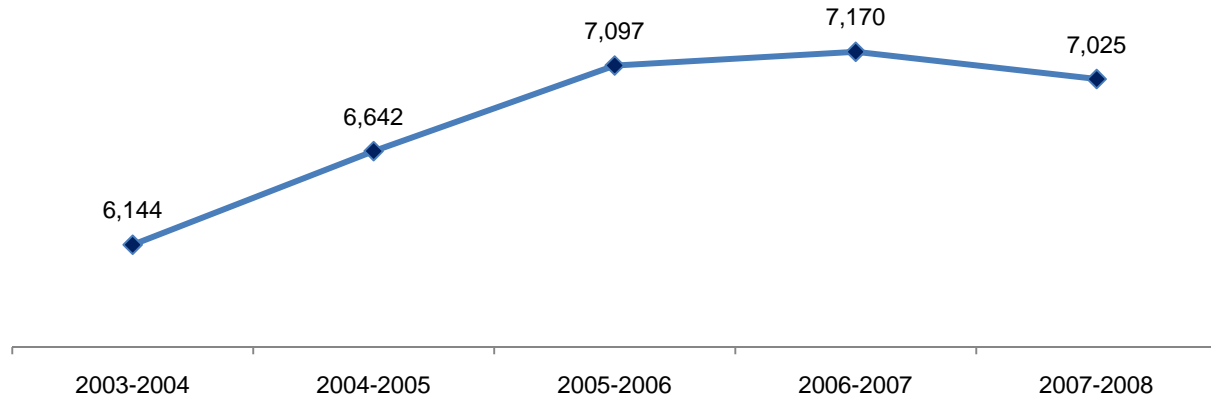


Table 3.17: Mesa College Annual Transfers

	2003-2004	2004-2005	2005-2006	2006-2007	2007-2008	% Change 2003-04 and 2007-08
	#	#	#	#	#	
Total	6,144	6,642	7,097	7,170	7,025	14%

Source: SDCCD Information System

Mesa College Section III: Student Outcomes (Annual Transfers)

Annual Transfers by Gender: From 2003/04 to 2007/08, female students (57%) had a higher transfer volume, on average, compared to their male student (43%) counterpart. The transfer volumes for both male and female students increased between 2003/04 and 2007/08 (19% and 11%, respectively).

Figure 3.18: Mesa College Annual Transfers by Gender

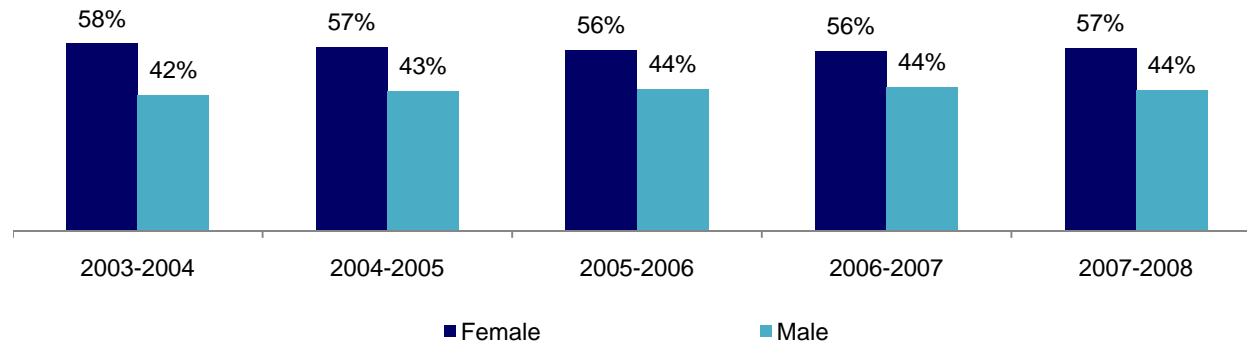


Figure 3.18: Mesa College Annual Transfers by Gender

	2003-2004		2004-2005		2005-2006		2006-2007		2007-2008		% Change 03/04 and 07/08	College Average 03/04- 07/08	Districtwide Average 03/04-07/08
	#	%	#	%	#	%	#	%	#	%			
Female	3,564	58%	3,773	57%	3,983	56%	3,988	56%	3,970	57%	11%	57%	57%
Male	2,576	42%	2,867	43%	3,111	44%	3,181	44%	3,054	44%	19%	43%	43%
Unreported	4	0%	2	0%	3	0%	1	0%	1	0%	-75%	0%	0%
Total	6,144	100%	6,642	100%	7,097	100%	7,170	100%	7,025	100%	14%	100%	0%

Source: SDCCD Information System

Mesa College Section III: Student Outcomes (Annual Transfers)

Annual Transfers by Ethnicity: Of all the students who transferred from Mesa College, almost half were White students (45%) on average. Ethnic groups with the second and third highest transfer volumes were Asian/Pacific Islanders students (19%) and Latino students (13%) between 2003/04 and 2007/08. Most of the ethnic groups displayed an increased trend in transfer volume with the exception of students categorized as 'Others' who displayed a decrease of 9%. African American students showed a 47% increase, from 213 in 2003/04 to 314 in 2007/08.

Figure 3.19: Mesa College Annual Transfers by Ethnicity

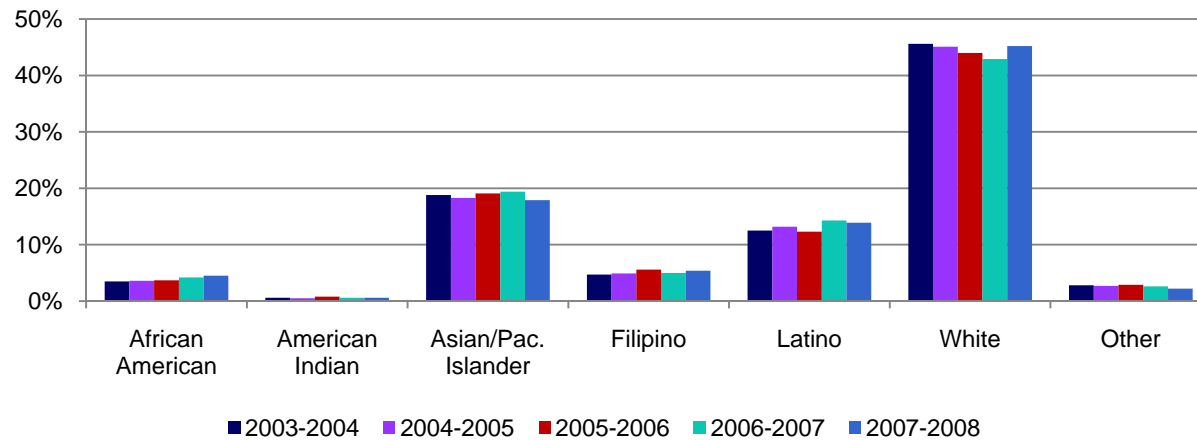


Table 3.19: Mesa College Annual Transfers by Ethnicity

	2003-2004		2004-2005		2005-2006		2006-2007		2007-2008		% Change 03/04 and 07/08	College Average 03/04- 07/08	Districtwide Average 03/04-07/08
	#	%	#	%	#	%	#	%	#	%			
African American	213	4%	237	4%	260	4%	298	4%	314	5%	47%	4%	6%
American Indian	38	1%	31	1%	57	1%	45	1%	45	1%	18%	1%	1%
Asian/Pac. Islander	1,155	19%	1,216	18%	1,357	19%	1,393	19%	1,257	18%	9%	19%	15%
Filipino	291	5%	326	5%	396	6%	361	5%	376	5%	29%	5%	6%
Latino	770	13%	876	13%	871	12%	1,024	14%	978	14%	27%	13%	16%
White	2,800	46%	2,993	45%	3,123	44%	3,075	43%	3,173	45%	13%	45%	42%
Other	173	3%	180	3%	208	3%	185	3%	157	2%	-9%	3%	3%
Unreported	704	12%	783	12%	825	12%	789	11%	725	10%	3%	11%	11%
Subtotal	6,144	100%	6,642	100%	7,097	100%	7,170	100%	7,025	100%	14%	100%	100%

Source: SDCCD Information System

Mesa College Section III: Student Outcomes (Annual Transfers)

Annual Transfers by Age: The age cohorts with the highest transfer volume on average were students ages 18-24 (72%), students between ages 25 and 29 years old (17%) and students ages 30 to 39 years old (8%) between 2003/04 and 2007/08. Students who were under 18 years old showed a 43% decrease in transfer volume, while students who were 50 years and older displayed a 54% increase in transfer volume between 2003/04 and 2007/08.

Figure 3.20: Mesa College Annual Transfers by Age

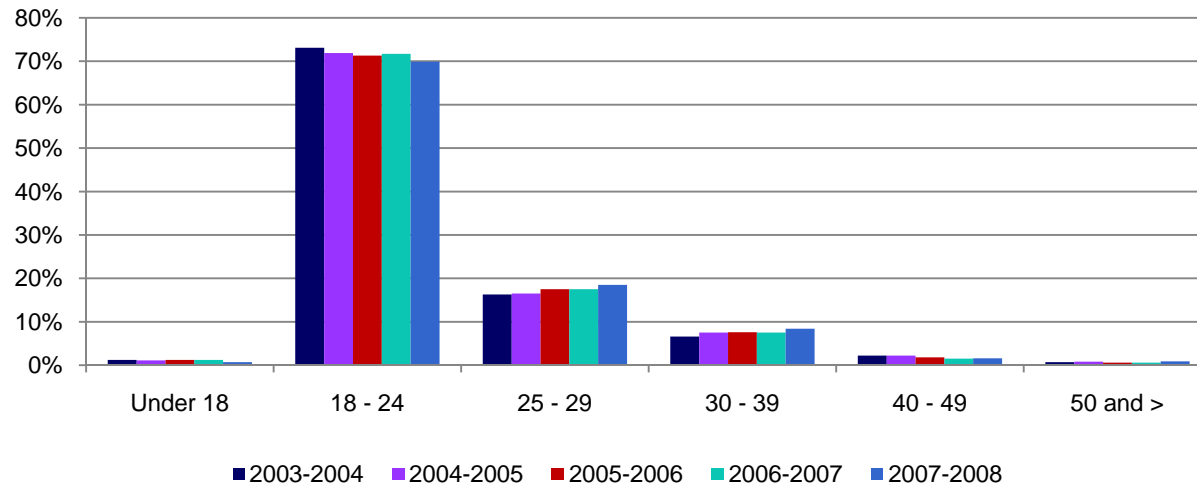


Table 3.20: Mesa College Annual Awards by Age

	2003-2004		2004-2005		2005-2006		2006-2007		2007-2008		% Change 03/04 and 07/08	College Average 03/04- 07/08	Districtwide Average 03/04-07/08
	#	%	#	%	#	%	#	%	#	%			
Under 18	74	1%	76	1%	87	1%	83	1%	51	1%	-31%	1%	1%
18 - 24	4,491	73%	4,776	72%	5,063	71%	5,142	72%	4,911	70%	9%	72%	69%
25 - 29	1,001	16%	1,094	17%	1,241	18%	1,257	18%	1,298	19%	30%	17%	18%
30 - 39	404	7%	495	8%	536	8%	538	8%	591	8%	46%	8%	9%
40 - 49	133	2%	145	2%	129	2%	109	2%	111	2%	-17%	2%	2%
50 and >	41	1%	56	1%	41	1%	41	1%	63	1%	54%	1%	1%
Unreported	0	0%	0	0%	0	0%	0	0%	0	0%	0%	0%	0%
Total	6,144	100%	6,642	100%	7,097	100%	7,170	100%	7,025	100%	14%	100%	100%

Source: SDCCD Information System

Mesa College Section III: Student Outcomes (Annual Transfers)

Annual Transfers by CSU/UC: Of all the students who transferred from Mesa College, 54% transferred into the California State University (CSU) system and 46% transferred into the University of California (UC) system. The CSU system saw a 19% increase in the number of students that transferred from Mesa College, while the UC system saw a 7% decrease in the number of students that transferred from Mesa College to their respective systems between 2003/04 and 2007/08.

Figure 3.21: Mesa College Annual Transfers by CSU/UC

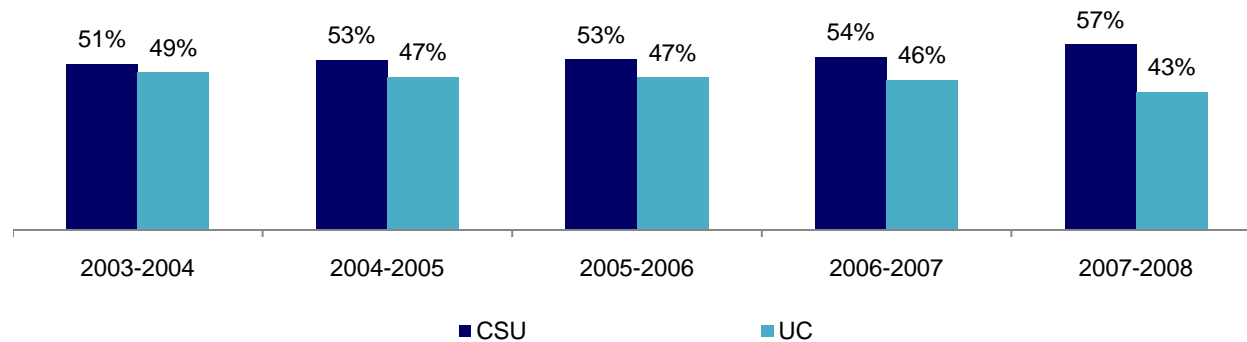


Table 3.21: Mesa College Annual Awards by CSU/UC

	2003-2004		2004-2005		2005-2006		2006-2007		2007-2008		% Change 03/04 and 07/08	College Average 03/04- 07/08	Districtwide Average 03/04-07/08
	#	%	#	%	#	%	#	%	#	%			
CSU	2,182	51%	2,402	53%	2,693	53%	2,603	54%	2,592	57%	19%	54%	66%
UC	2,070	49%	2,153	47%	2,405	47%	2,254	46%	1,920	43%	-7%	46%	35%
Total	4,252	100%	4,555	100%	5,098	100%	4,857	100%	4,512	100%	6%	100%	100%

Source: SDCCD Information System

Mesa College Section III: Student Outcomes (Annual Transfers)

Annual Transfers by Institution Type: Of all the students who transferred from Mesa College, 24% transferred to a private institution and 76% transferred to a public institution. Both public and private institutions saw an increased trend in the number of students that transferred from Mesa College (9% and 32%, respectively) to their respective institutions between 2003/04 and 2007/08.

Figure 3.22: Mesa College Annual Transfers by Institution Type

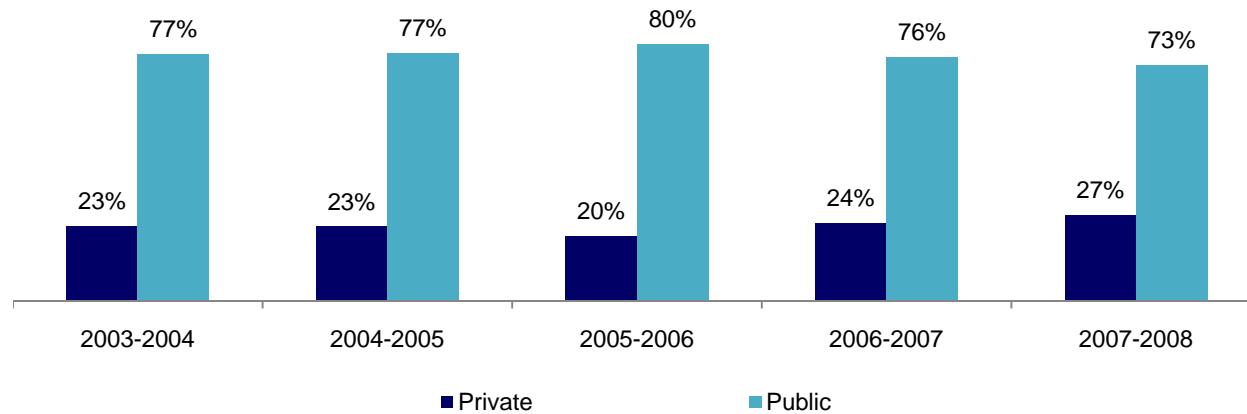


Table 3.22: Mesa College Annual Awards by Institution Type

	2003-2004		2004-2005		2005-2006		2006-2007		2007-2008		% Change 03/04 and 07/08	College Average 03/04- 07/08	Districtwide Average 03/04-07/08
	#	%	#	%	#	%	#	%	#	%			
Private	1,431	23%	1,534	23%	1,436	20%	1,743	24%	1,884	27%	32%	24%	25%
Public	4,713	77%	5,108	77%	5,661	80%	5,427	76%	5,141	73%	9%	76%	75%
Total	6,144	100%	6,642	100%	7,097	100%	7,170	100%	7,025	100%	14%	100%	100%

Source: SDCCD Information System

Mesa College Section III: Student Outcomes (Annual Transfers)

Annual Transfers by Institution Location: Of all the students who transferred from Mesa College, 82% transferred to an In-State institution and 18% transferred to an Out-of-State institution. Both In-State and Out-of-State institutions saw an increased trend in the number of students that transferred from Mesa College (10% and 35%, respectively) to their respective institutions between 2003/04 and 2007/08.

Figure 3.23: Mesa College Annual Transfers by Institution Location

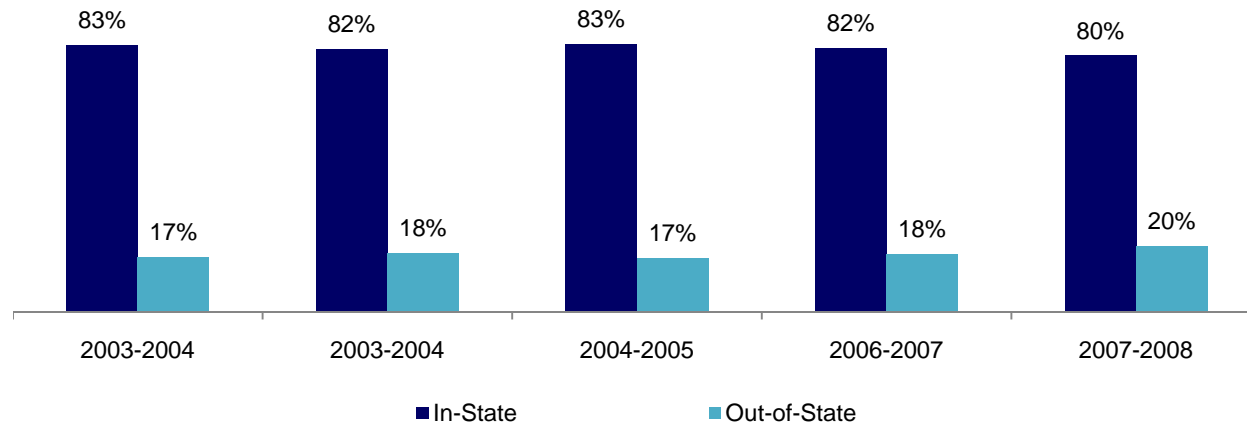


Table 3.23: Mesa College Annual Awards by Institution Location

	2003-2004		2004-2005		2005-2006		2006-2007		2007-2008		% Change 03/04 and 07/08	College Average 03/04- 07/08	Districtwide Average 03/04-07/08
	#	%	#	%	#	%	#	%	#	%			
In-State	5,085	83%	5,425	82%	5,908	83%	5,880	82%	5,592	80%	10%	82%	79%
Out-of-State	1,059	17%	1,217	18%	1,189	17%	1,290	18%	1,433	20%	35%	18%	21%
Total	6,144	100%	6,642	100%	7,097	100%	7,170	100%	7,025	100%	14%	100%	100%

Source: SDCCD Information System

Mesa College Section IV: Productivity and Efficiency

This section of the Fact Book contains information on productivity and efficiency measures. The following describes in detail each of the measures.

- 1) FTES. The first measure reported in this section is a measure of productivity. FTES is a calculation of full-time equivalent students and is based on the total number of student contact hours.
- 2) Enrollments. The second measure in this section of the report is also a measure of productivity. Enrollments are duplicated counts of students. The measure counts all of the classes a single student is enrolled in compared to unduplicated headcount which counts the student only once regardless of the number of classes he/she may be enrolled in.
- 3) Fill Rates. The third measure reported in this section is a measure of efficiency. Fill rates are a calculation of the total enrollment capacity of a class over the total enrollments in the class.

Mesa College Section IV: Productivity and Efficiency

Annual FTES: Mesa College had declining FTES between 2003/04 and 2006/07 with a slight increase in 2007/08. Between 2003/04 and 2007/08, there was a 5% decrease in FTES. For credit FTES, there was a decrease by 5% from 15,665 in 2003/04 to 14,906 in 2007/08. College non-credit FTES has seen a 65% decrease between 2003/04 to 2007/08. This was largely due to the elimination of open labs by the State Chancellor's Office.

Figure 4.1: Mesa College Annual FTES

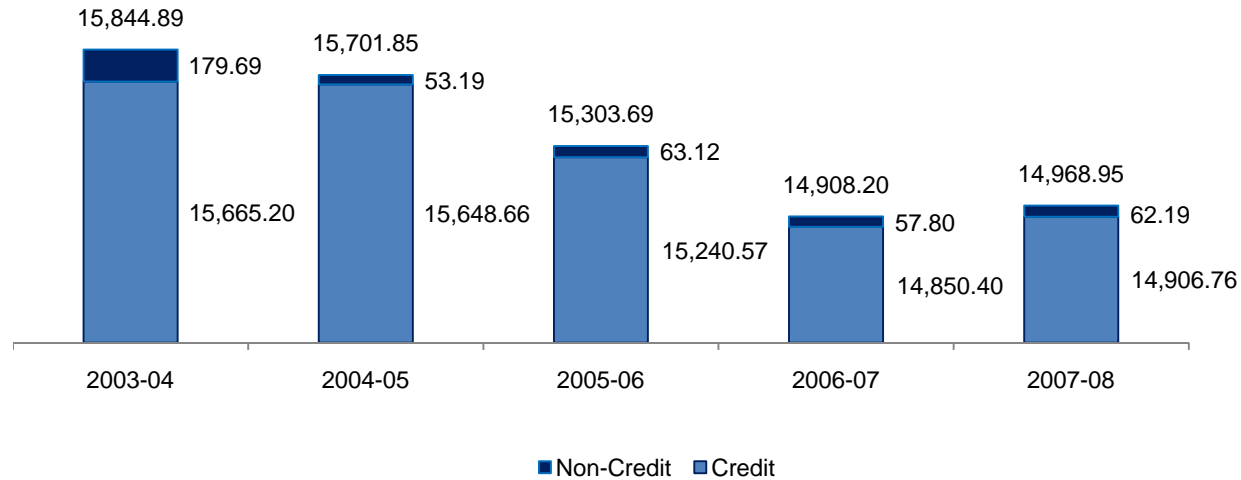


Table 4.1: Mesa College Annual FTES

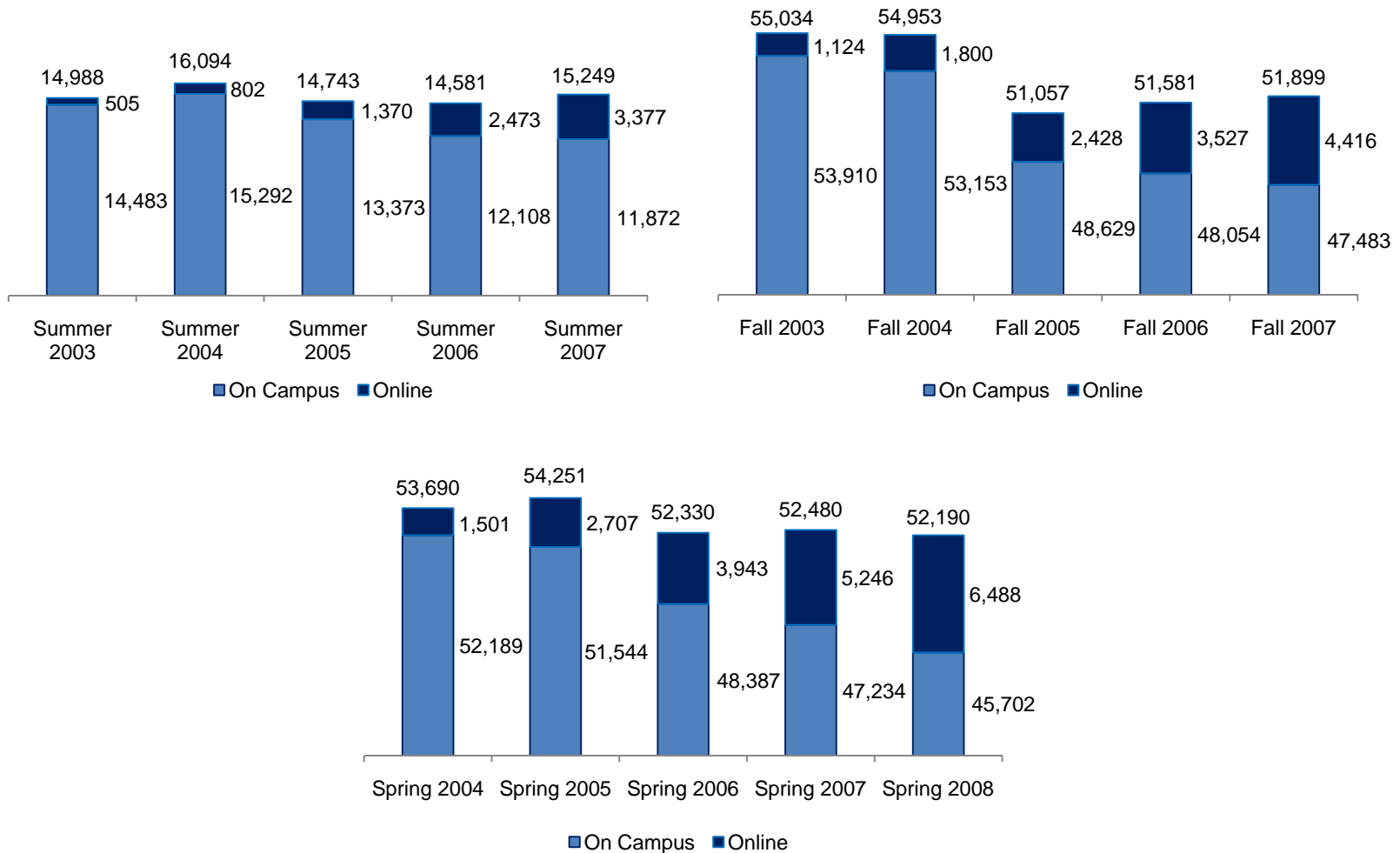
	2003-04	2004-05	2005-06	2006-07	2007-08
Credit	15,665.20	15,648.66	15,240.57	14,850.40	14,906.76
Non-Credit	179.69	53.19	63.12	57.80	62.19
Total	15,844.89	15,701.85	15,303.69	14,908.20	14,968.95

Source: SDCCD Information System

Mesa College Section IV: Productivity and Efficiency

Enrollments: The enrollment trend for the online mode of instruction had increased tremendously for summer (568%), fall (293%) and spring (332%) cohorts between 2003/04 and 2007/08. However, the on campus mode of instruction enrollment trend had consistently decreased for the summer (18%), fall (12%) and spring cohorts (12%) between 2003/04 and 2007/08. Enrollment trends for all colleges in the district were consistent with the enrollment trends for Mesa College.

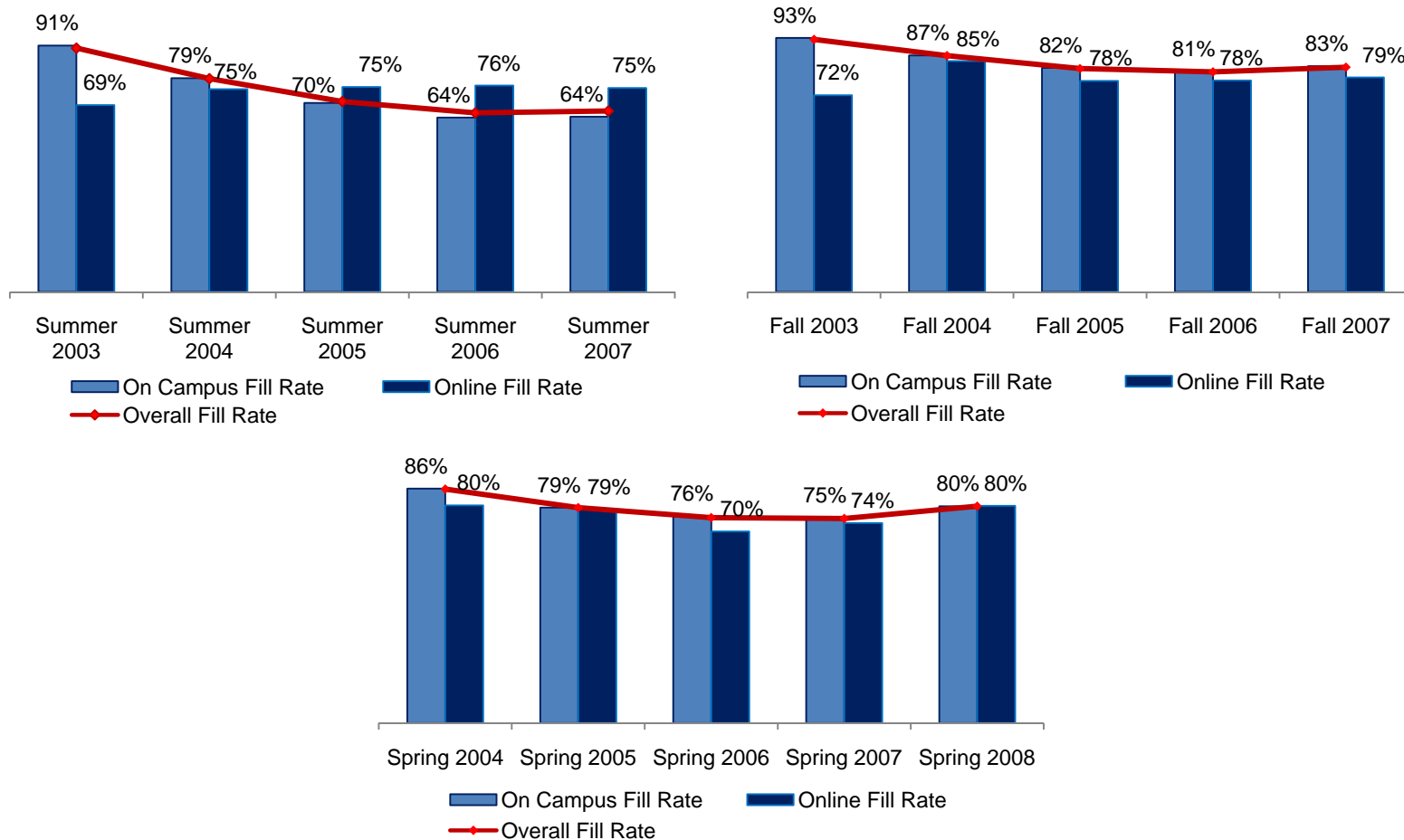
Figure 4.2.1: Mesa College Enrollments



Mesa College Section IV: Productivity and Efficiency

Fill Rates: Mesa College's overall fill rates were the highest for the fall cohorts, on average, when compared to spring and summer cohorts (85% vs. 80% and 75%, respectively) between 2003/04 and 2007/08. Overall fill rates for all colleges in the district followed the same pattern. On average, fill rates were the highest for the on campus mode of instruction across summer, fall and spring cohorts (74%, 85%, and 80%) compared to the online mode of instruction (summer 75%, fall 79%, and spring 76% cohorts). Mesa College had higher fill rates, on average, compared to the fill rates of all colleges in the district across all modes of instruction.

Figure 4.2.2: Mesa College Fill Rates



Mesa College Section IV: Productivity and Efficiency

Table 4.2: Mesa College Enrollments and Fill Rates

Term	On Campus			Online			Total		
	Enrollment	Capacity	Fill Rate	Enrollment	Capacity	Fill Rate	Enrollment	Capacity	Fill Rate
Summer 2003	14,483	15,977	91%	505	735	69%	14,988	16,712	90%
Summer 2004	15,292	19,443	79%	802	1,075	75%	16,094	20,518	78%
Summer 2005	13,373	19,237	70%	1,370	1,817	75%	14,743	21,054	70%
Summer 2006	12,108	18,877	64%	2,473	3,258	76%	14,581	22,135	66%
Summer 2007	11,872	18,414	64%	3,377	4,501	75%	15,249	22,915	67%
Total & Average	67,128	91,948	73%	8,527	11,386	75%	75,655	103,334	73%
Fall 2003	53,910	57,693	93%	1,124	1,554	72%	55,034	59,247	93%
Fall 2004	53,153	61,087	87%	1,800	2,120	85%	54,953	63,207	87%
Fall 2005	48,629	59,014	82%	2,428	3,128	78%	51,057	62,142	82%
Fall 2006	48,054	59,180	81%	3,527	4,533	78%	51,581	63,713	81%
Fall 2007	47,483	57,182	83%	4,416	5,597	79%	51,899	62,779	83%
Total & Average	251,229	294,156	85%	13,295	16,932	79%	264,524	311,088	85%
Spring 2004	52,189	60,523	86%	1,501	1,874	80%	53,690	62,397	86%
Spring 2005	51,544	65,034	79%	2,707	3,443	79%	54,251	68,477	79%
Spring 2006	48,387	63,650	76%	3,943	5,595	70%	52,330	69,245	76%
Spring 2007	47,234	62,606	75%	5,246	7,129	74%	52,480	69,735	75%
Spring 2008	45,702	57,319	80%	6,488	8,116	80%	52,190	65,435	80%
Total & Average	245,056	309,132	79%	19,885	26,157	76%	264,941	335,289	79%

Source: SDCCD Information System

Mesa College Section V: Human Resources

This section of the Fact Book contains information on the number and classification of employees during the Fall 2007 semester. The information is broken down by gender and ethnicity.

Mesa College Section V: Human Resources

Fall 2007 Employees by Ethnicity: There were a total of 1,432 total employees working at Mesa College during Fall 2007. The ethnic breakdown showed that White employees comprised 57% of the total employee population, followed by Latino and Asian (12% each) employees and African American employees comprising 8% of the Mesa College workforce. Among classified staff, White employees comprised nearly half of the employees and made up two-thirds of the teaching faculty positions compared to other ethnic groups. Although White employees generally constituted a higher percentage of the workforce at Mesa College, the trend decreased with management. White employees comprised only one-third (33%) of management positions. Latinos comprised 17% of the management positions followed by Asians with 8%.

Figure 5.1: Mesa College Fall 2007 Employees by Ethnicity

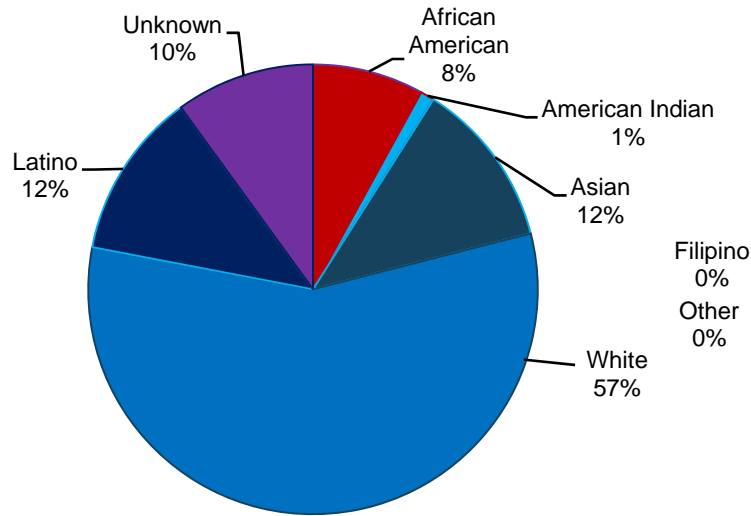
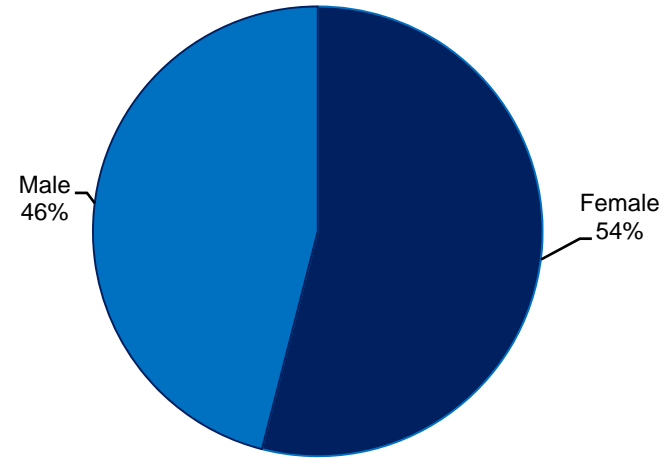


Figure 5.2: Mesa College Fall 2007 Employees by Gender



Mesa College Section V: Human Resources

Table 5.1: Mesa College Fall 2007 Employees by Ethnicity

	African American		American Indian		Asian		White		Latino		Filipino		Other		Unknown		Total
Total Employees	109	8%	9	1%	178	12%	815	57%	172	12%	6	<1%	4	<1%	139	10%	1,432
Male	50	8%	6	1%	69	11%	386	59%	70	11%	2	<1%	2	<1%	71	11%	656
Female	59	8%	3	<1%	109	14%	429	55%	102	13%	4	1%	2	<1%	68	9%	776
Classified Staff	21	12%	-	-	20	11%	85	48%	32	18%	4	2%	2	1%	13	7%	177
Non-Academic Hourly	22	10%	2	1%	72	31%	78	34%	25	11%	-	-	-	-	32	14%	231
Teaching Faculty	45	5%	6	1%	72	9%	556	66%	86	10%	-	-	2	<1%	78	9%	845
Contract	15	7%	2	1%	16	8%	130	62%	25	12%	-	-	1	1%	21	10%	210
Adjunct	30	5%	4	1%	56	9%	426	67%	61	10%	-	-	1	<1%	57	9%	635
Counseling Faculty	6	10%	1	2%	7	12%	26	43%	15	25%	1	2%	-	-	4	7%	60
Contract	4	13%	-	-	4	13%	14	45%	7	23%	1	3%	-	-	1	3%	31
Adjunct	2	7%	1	3%	3	10%	12	41%	8	28%	-	-	-	-	3	10%	29
Library Faculty	-	-	-	-	-	-	11	85%	-	-	-	-	-	-	2	16%	13
Contract	-	-	-	-	-	-	6	86%	-	-	-	-	-	-	1	14%	7
Adjunct	-	-	-	-	-	-	5	83%	-	-	-	-	-	-	1	17%	6
Police Officers	3	33%	-	-	-	-	5	56%	1	11%	-	-	-	-	-	-	9
Community Service Officers	1	14%	-	-	-	-	4	57%	2	29%	-	-	-	-	-	-	7
Management	2	11%	-	-	1	6%	6	33%	3	17%	-	-	-	-	6	33%	18
Supervisory Staff	4	18%	-	-	1	5%	9	41%	5	23%	1	5%	-	-	2	9%	22

Source: SDCCD Information System

Table 5.2: Mesa College Employee Overall Gender and Job Status

Gender		Job Status	
Male	46%	Full-Time/Contract	34%
Female	54%	Hourly/Adjunct	66%

Source: SDCCD Information System