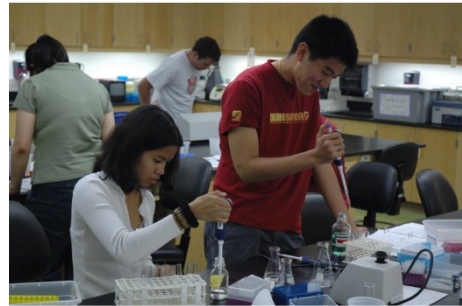




San Diego Community College District

District Fact Book 2008



November 2008

Prepared by:
Office of Institutional Research and Planning

SDCCD Fact Book 2008: Table of Contents

Overview.....1

Highlights.....2

Section I: Headcount and Student Characteristics.....5

- Overall.....6
- Gender.....7
- Ethnicity.....8
- Age.....9
- Enrollment Status.....10
- Education Objective.....11
- Primary Language.....13
- Prior Education Level.....14
- Residence by Service Area.....15
- Units Attempted.....16
- First Generation.....17
- Income Level.....18
- DSPS.....19
- EOPS.....20

Section II. Fall to Spring Term Persistence Rates.....21

- Overall.....22
- Gender.....23
- Ethnicity.....24
- Age.....26

Section III. Student Outcomes.....28

- Annual Success Rates
 - Overall.....29
 - Gender.....30
 - Ethnicity.....31
 - Age.....32

- Annual Retention Rates
 - Overall.....33
 - Gender.....34
 - Ethnicity.....35
 - Age.....36
- Annual GPA
 - Overall.....37
 - Gender.....38
 - Ethnicity39
 - Age.....40
- Annual Awards Conferred
 - Overall.....41
 - Gender.....42
 - Ethnicity.....45
 - Age.....49
- Annual Transfer
 - Overall.....53
 - Gender.....54
 - Ethnicity.....55
 - Age.....56
 - UC/CSU.....57
 - Institution Type.....58
 - Institution Location.....59

Section IV. Productivity and Efficiency.....60

- Annual FTES.....61
- Fall Enrollments: Online and On Campus.....62
- Fill Rates.....63

Section V. Human Resources.....65

- Fall 2007 Employees by Ethnicity.....66

SDCCD Fact Book 2008: Overview

This Fact Book is a publication of the Office of Institutional Research and Planning for the San Diego Community College District. It is designed to serve the information needs of the college with a primary focus on student enrollment, demographics and outcomes.

The Fact Book is a rich source of collegewide trend information that may be used for planning and decision making. The book contains the following five sections:

- 1) **Headcount and Student Characteristics.** Provides information on student demographic characteristics (e.g., age, ethnicity and educational objective) over five years.
- 2) **Term Persistence Rates.** Provides information about students who complete a fall term and enroll in the subsequent spring term. The information is also broken down by demographic characteristics of interest.
- 3) **Student Outcomes.** Provides information on students' successful course completion rates, retention rates, GPA, awards conferred and transfer volume. All of the information is provided in summary form as well as broken down by demographic characteristics of interest.
- 4) **Productivity and Efficiency.** Provides information on annual FTES, enrollment and fill rates.
- 5) **Human Resources.** Provides information on the number of employees and is broken down by ethnicity and gender by employee classification.

Each of the sections contains the following benchmarks: 1) The percentage change over the five year period being reported, 2) The collegewide average and 3) The districtwide (includes Continuing Education) or all colleges in the district averages (excludes Continuing Education).

SDCCD Fact Book 2008: Highlights

Headcount and Student Characteristics

- Districtwide unduplicated student headcount showed a 4% increase between Fall 2003 and Fall 2007.
- On average, the female student headcount (55%) was higher than their male counterpart (44%), which has remained consistent from Fall 2003 to Fall 2007.
- The ethnic groups that comprised the largest headcounts between Fall 2003 and Fall 2007 were White students (37%), Latino students (28%) and Asian/Pacific Islander students (12%)
- Students under 18 years old increased 52%, while students between ages 30 and 39 years old decreased 7% from Fall 2003 to Fall 2007.
- Almost half of the district colleges general student population (48%) selected transfer with or without an AA degree as their educational objective.
- From Fall 2003 to Fall 2007, on average, 24% of the students reported being first generation college students.

Term Persistence Rates

- The average term persistence rate for first-time students from the district colleges was 62% between Fall 2003 and Fall 2007 cohorts.
- On average, term persistence rates of female students (64%) were higher than their male student counterpart (60%) between Fall 2003 and Fall 2007 cohorts.
- The ethnic groups with the highest persistence rates on average were Filipino students (70%), students categorized as 'Other' ethnicities (65%) and Asian/Pacific Islander students (64%).
- A general trend among Fall 2003 to Fall 2007 cohorts showed, as age increased, persistence rates decreased.

Student Outcomes

- A general trend showed, on average, as age increased so did success rates.
- The annual retention rates for all colleges in the district displayed a mild decreasing trend from 84% in 2003/04 to 82% in 2007/08, with an average of 83%.

SDCCD Fact Book 2008: Highlights

- Between 2003/04 and 2007/08, ethnic groups with the highest retention rates on average were Asian/Pacific Islander students (84%), White students (84%), students categorized as 'Other' ethnicities (83%), and Filipino students (83%).
- The annual GPA for all colleges in the district remained relatively stable between 2003/04 and 2007/08, with an average of 2.75.
- A general trend between 2003/04 and 2007/08 showed as age increased so did annual GPA.

Annual Awards Conferred

- On average, 68% of the total awards conferred within all colleges in the district were associate degrees.
- Of the total awards conferred within all colleges in the district, female students (57%) received more associate degrees, on average, than their male student counterpart (43%) between 2003/04 and 2007/08.
- The number of associate degrees conferred within all colleges in the district increased for African American and Latino students (1% and 9%, respectively) between 2003/04 to 2007/08.
- Between 2003/04 and 2007/08, students between ages 18 and 24 years old received the highest number of associate degrees (40%) on average.

Annual Transfer

- The annual transfer volume for all colleges in the district increased 39%, from 10,252 in 2003/04 to 14,232 in 2007/08.
- Of all the students who transferred to a CSU/UC from the district, on average, 66% transferred into the California State University (CSU) system and 35% transferred into the University of California (UC) system.
- Of all the students who transferred from the district, on average, 25% transferred to a private institution and 75% transferred to a public institution.
- Of all the students who transferred from the district, on average, 79% transferred to an In-State institution and 21% transferred to an Out-of-State institution.

Productivity and Efficiency

- Between 2003/04 and 2007/08, the district had a 3% increase in FTES.

SDCCD Fact Book 2008: Highlights

- The average fill rates for all colleges in the district were the highest for the fall cohort when compared to spring and summer cohorts (81% vs. 76% and 72%, respectively) between 2003/04 and 2007/08.
- The enrollment trend for the online mode of instruction increased tremendously for summer (687%), fall (242%) and spring (286%) cohorts between 2003/04 and 2007/08.

Human Resources Summary Highlights

- There were a total of 4,904 total employees working within the district during Fall 2007.
- The ethnic breakdown showed that White employees comprised 53% of the total employee population, followed by Latino employees (16%) and Asian employees comprised 11% of the districtwide workforce.

SDCCD Section I: Headcount and Student Characteristics

This section of the Fact Book contains student headcount by various student characteristics. The headcount figures are based on official census counts at the end of the semester (all students who dropped or never attended prior to the class census date are not included). The headcount information is reported over a period of five years to analyze trends and establish benchmarks. Headcount information is broken down into the following segments:

- Overall
- Gender
- Ethnicity
- Age
- Education Goal
- Enrollment Status
- Primary Language
- Prior Education Level
- Residence by Service Area
- Units Attempted
- First Generation
- Income Level
- DSPS
- EOPS

SDCCD Section I: Headcount and Student Characteristics

Overall Headcount: Districtwide unduplicated student headcount showed a 4% increase between Fall 2003 and Fall 2007.

Figure 1.1: Districtwide Overall Headcount

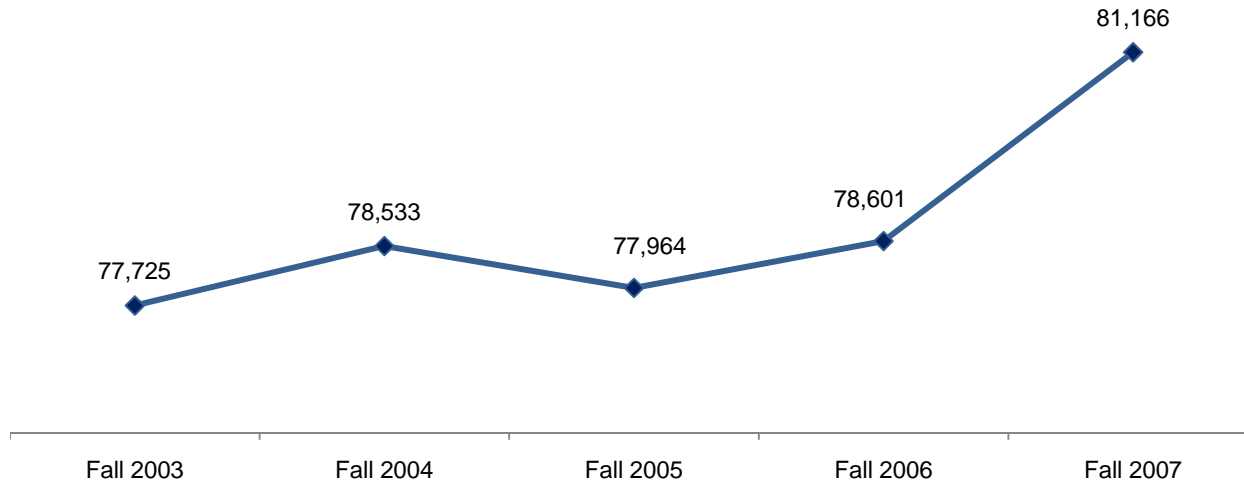


Table 1.1: Districtwide Overall Headcount

	Fall 2003	Fall 2004	Fall 2005	Fall 2006	Fall 2007	% Change Fall 03 and 07
	#	#	#	#	#	
Total	77,725	78,533	77,964	78,601	81,166	4%

Source: SDCCD Information System

SDCCD Section I: Headcount and Student Characteristics

Headcount by Gender: On average, the female student headcount (55%) was higher than their male counterpart (44%), which has remained consistent from Fall 2003 to Fall 2007. Both male and female student headcounts increased between Fall 2003 and Fall 2007, which was consistent with the districtwide student population trend.

Figure 1.2: Districtwide Headcount by Gender

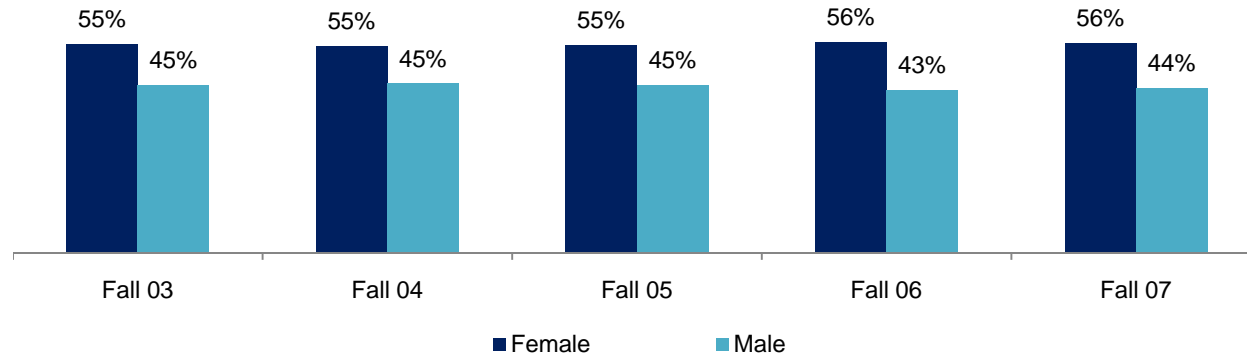


Table 1.2: Districtwide Headcount by Gender

	Fall 03		Fall 04		Fall 05		Fall 06		Fall 07		% Change Fall 03 and 07	Districtwide Average Fall 03-07
	#	%	#	%	#	%	#	%	#	%		
Female	43,031	55%	43,112	55%	43,122	55%	44,077	56%	45,309	56%	5%	55%
Male	34,628	45%	35,367	45%	34,799	45%	34,008	43%	35,648	44%	3%	44%
Unreported	66	0%	54	0%	43	0%	516	1%	209	0%	217%	0%
Total	77,725	100%	78,533	100%	77,964	100%	78,601	100%	81,166	100%	4%	100%

Source: SDCCD Information System

SDCCD Section I: Headcount and Student Characteristics

Headcount by Ethnicity: The ethnic groups that comprised the largest headcounts between Fall 2003 and Fall 2007 were White students (37%), Latino students (28%) and Asian/Pacific Islander students (12%). The Asian/Pacific Islander student population increased 9% in contrast to students who were categorized as 'Other' ethnicities, which declined 14% between Fall 2003 and Fall 2007.

Figure 1.3: Districtwide Headcount by Ethnicity

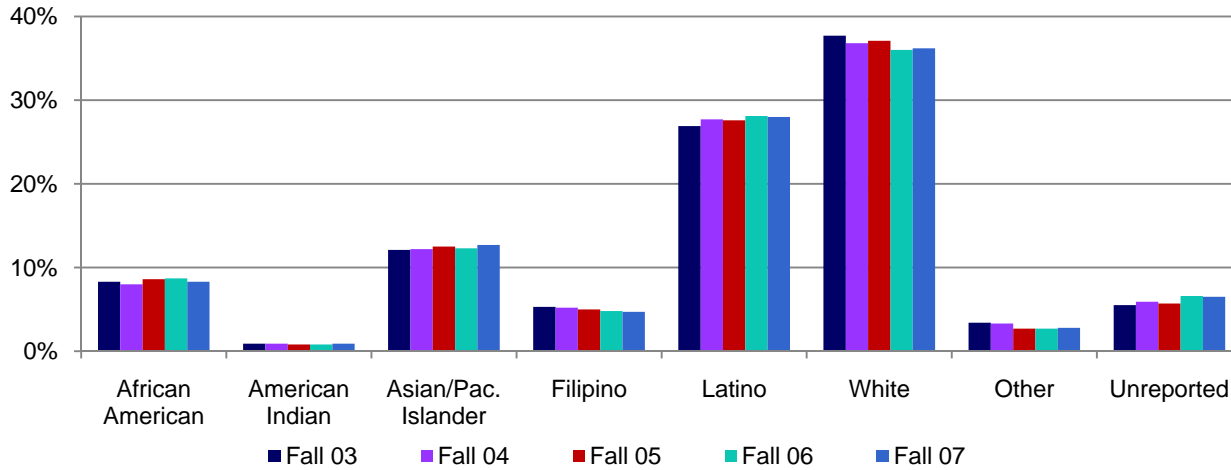


Table 1.3: Districtwide Headcount by Ethnicity

	Fall 03		Fall 04		Fall 05		Fall 06		Fall 07		% Change Fall 03 and 07	Districtwide Average Fall 03-07
	#	%	#	%	#	%	#	%	#	%		
African American.	6,416	8%	6,321	8%	6,683	9%	6,824	9%	6,730	8%	5%	8%
American Indian	689	1%	701	1%	661	1%	619	1%	710	1%	3%	1%
Asian/Pac. Islander	9,394	12%	9,570	12%	9,717	13%	9,697	12%	10,279	13%	9%	12%
Filipino	4,094	5%	4,104	5%	3,923	5%	3,799	5%	3,786	5%	-8%	5%
Latino	20,943	27%	21,747	28%	21,526	28%	22,090	28%	22,701	28%	8%	28%
White	29,274	38%	28,880	37%	28,911	37%	28,267	36%	29,419	36%	0%	37%
Other	2,640	3%	2,592	3%	2,091	3%	2,090	3%	2,270	3%	-14%	3%
Unreported	4,275	6%	4,618	6%	4,452	6%	5,215	7%	5,271	7%	23%	6%
Total	77,725	100%	78,533	100%	77,964	100%	78,601	100%	81,166	100%	4%	100%

Source: SDCCD Information System

SDCCD Section I: Headcount and Student Characteristics

Headcount by Age: From Fall 2003 to Fall 2007, the districtwide age cohorts with the largest headcounts, on average, were students between ages 18 to 24 years old (37%), students age 50 and older (18%) and students ages 30-39 (17%). Students under 18 years old increased 52%, while students between ages 30 and 39 years old decreased 7% from Fall 2003 to Fall 2007.

Figure 1.4: Districtwide Headcount by Age

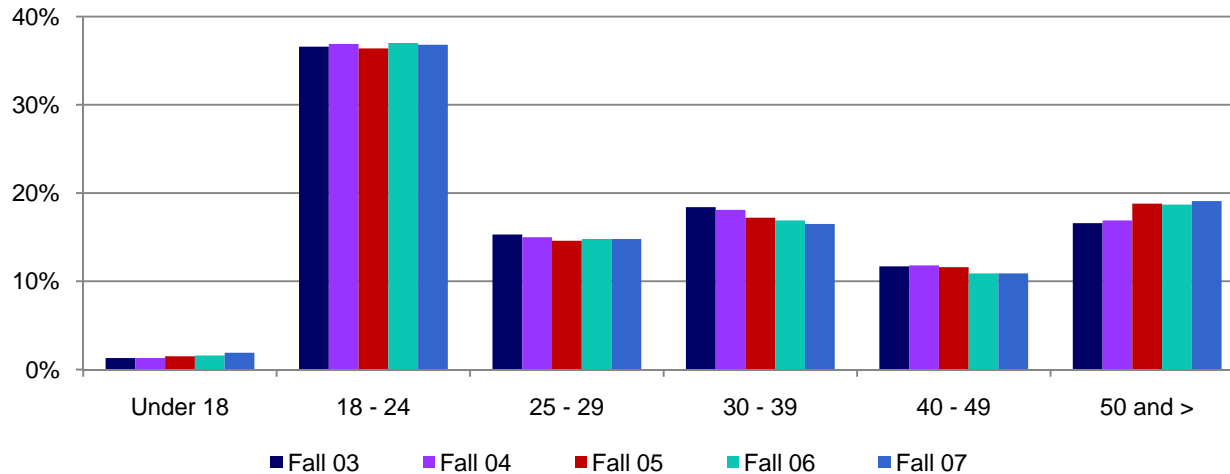


Table 1.4: Districtwide Headcount by Age

	Fall 03		Fall 04		Fall 05		Fall 06		Fall 07		% Change Fall 03 and 07	Districtwide Average Fall 03-07
	#	%	#	%	#	%	#	%	#	%		
Under 18	1,039	1%	1,059	1%	1,142	2%	1,289	2%	1,579	2%	52%	2%
18 - 24	28,435	37%	28,942	37%	28,381	36%	29,107	37%	29,853	37%	5%	37%
25 - 29	11,901	15%	11,791	15%	11,403	15%	11,608	15%	12,034	15%	1%	15%
30 - 39	14,291	18%	14,192	18%	13,377	17%	13,286	17%	13,360	17%	-7%	17%
40 - 49	9,119	12%	9,261	12%	9,011	12%	8,570	11%	8,836	11%	-3%	11%
50 and >	12,929	17%	13,283	17%	14,644	19%	14,728	19%	15,499	19%	20%	18%
Unreported	11	0%	5	0%	6	0%	13	0%	5	0%	-55%	0%
Total	77,725	100%	78,533	100%	77,964	100%	78,601	100%	81,166	100%	4%	100%

Source: SDCCD Information System

SDCCD Section I: Headcount and Student Characteristics

Headcount by Enrollment Status: Sixty-two percent of the student population were continuing students. The number of returning transfer students who were enrolled at the district colleges increased 54%, from 1,485 students in Fall 2003 to 2,285 in Fall 2007. In contrast, the number of continuing students decreased 3% between Fall 2003 and Fall 2007.

Figure 1.5: District Colleges Headcount by Enrollment Status

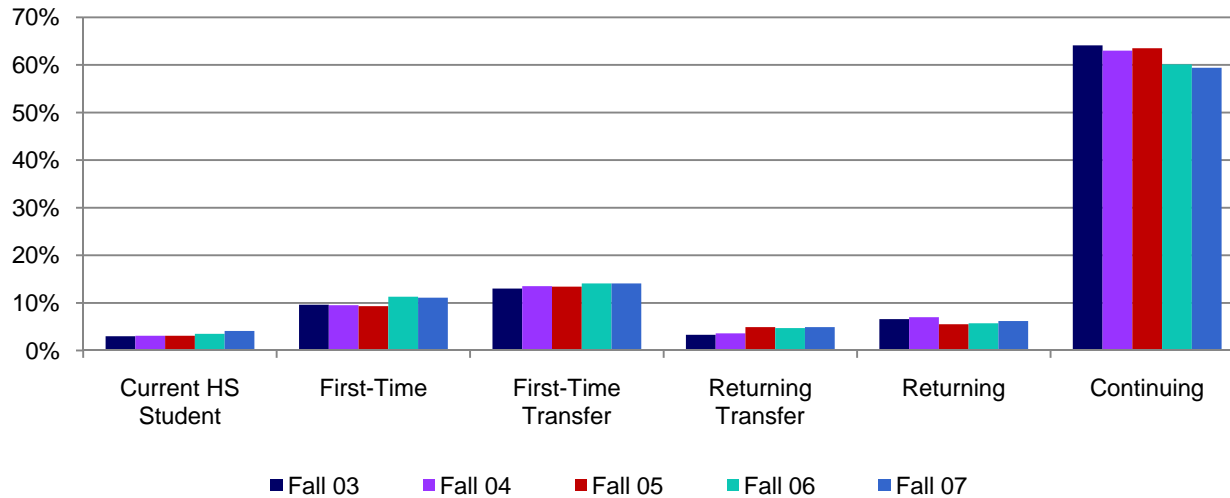


Table 1.5: District Colleges Headcount by Enrollment Status

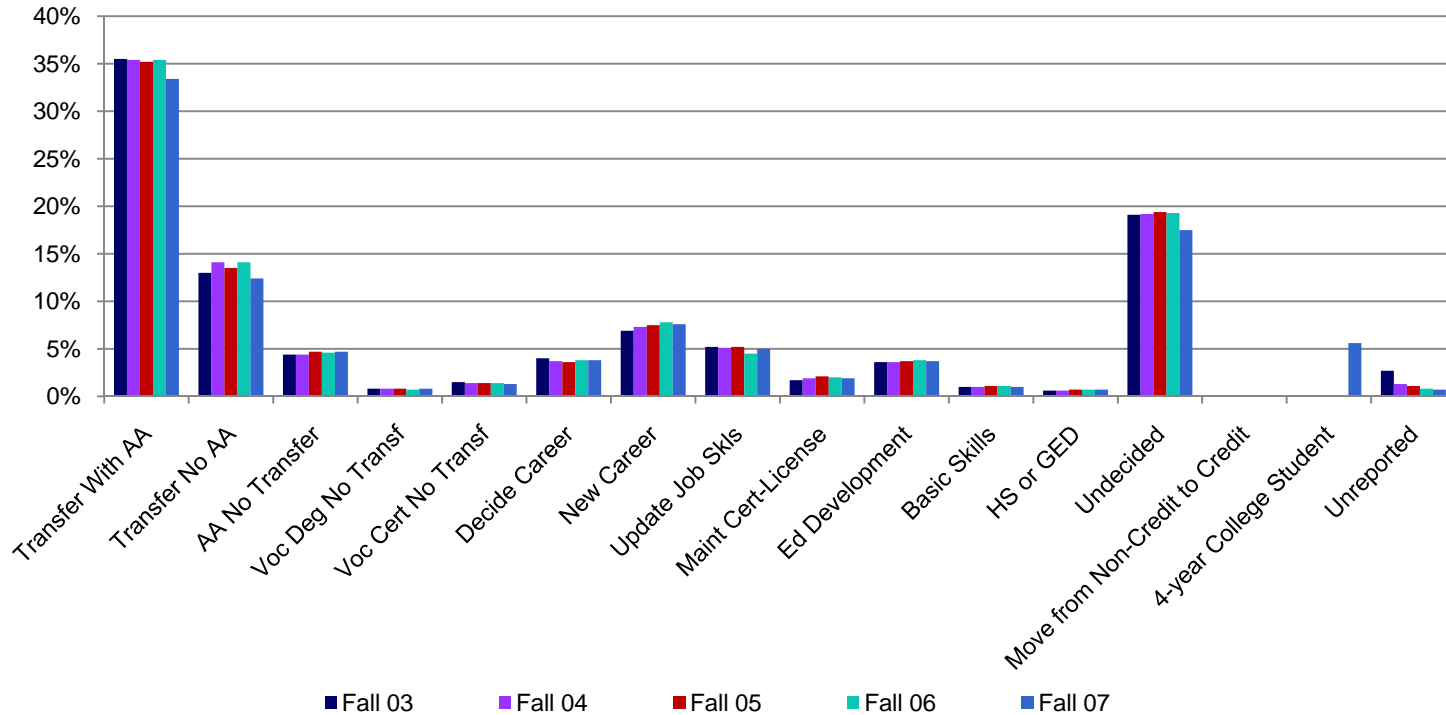
	Fall 03		Fall 04		Fall 05		Fall 06		Fall 07		% Change Fall 03 and 07	All Colleges Average Fall 03-07
	#	%	#	%	#	%	#	%	#	%		
Current HS Student	1,332	3%	1,383	3%	1,355	3%	1,529	4%	1,923	4%	44%	3%
First-Time	4,282	10%	4,215	10%	4,054	9%	5,012	11%	5,192	11%	21%	10%
First-Time Transfer	5,812	13%	6,002	14%	5,864	13%	6,232	14%	6,589	14%	13%	14%
Returning Transfer	1,485	3%	1,606	4%	2,134	5%	2,091	5%	2,285	5%	54%	4%
Returning	2,947	7%	3,115	7%	2,403	6%	2,537	6%	2,878	6%	-2%	6%
Continuing	28,659	64%	28,043	63%	27,811	64%	26,623	60%	27,743	59%	-3%	62%
Unreported	164	0%	145	0%	179	0%	268	1%	130	0%	-21%	0%
Total	44,681	100%	44,509	100%	43,800	100%	44,292	100%	46,740	100%	5%	100%

Source: SDCCD Information System

SDCCD Section I: Headcount and Student Characteristics

Headcount by Educational Objective: Almost half of the district colleges general student population (48%) selected transfer with or without an AA degree as their educational objective. Obtaining a high school degree or GED, as an educational objective, increased 22% among students from Fall 2003 to Fall 2007.

Figure 1.6: District Colleges Headcount by Educational Objective



SDCCD Section I: Headcount and Student Characteristics

Table 1.6: District Colleges Headcount by Educational Objective

	Fall 03		Fall 04		Fall 05		Fall 06		Fall 07		% Change Fall 03 and 07	All Colleges Average Fall 03-07
	#	%	#	%	#	%	#	%	#	%		
Transfer With AA	15,883	36%	15,737	35%	15,417	35%	15,691	35%	15,622	33%	-2%	35%
Transfer No AA	5,796	13%	6,293	14%	5,931	14%	6,231	14%	5,783	12%	0%	13%
AA No Transfer	1,963	4%	1,978	4%	2,070	5%	2,018	5%	2,199	5%	12%	5%
Voc Deg No Transfer	359	1%	362	1%	334	1%	327	1%	358	1%	0%	1%
Voc Cert No Transfer	658	2%	612	1%	603	1%	609	1%	611	1%	-7%	1%
Decide Career	1,794	4%	1,668	4%	1,583	4%	1,664	4%	1,767	4%	-2%	4%
New Career	3,079	7%	3,259	7%	3,285	8%	3,455	8%	3,546	8%	15%	7%
Update Job Skills	2,327	5%	2,289	5%	2,280	5%	1,990	5%	2,328	5%	0%	5%
Maintain Cert-License	762	2%	844	2%	918	2%	884	2%	872	2%	14%	2%
Ed Development	1,618	4%	1,586	4%	1,600	4%	1,696	4%	1,719	4%	6%	4%
Basic Skills	468	1%	458	1%	462	1%	504	1%	447	1%	-4%	1%
HS or GED	264	1%	273	1%	297	1%	314	1%	323	1%	22%	1%
Undecided	8,514	19%	8,557	19%	8,517	19%	8,569	19%	8,178	18%	-4%	19%
Move from Non-Credit to Credit	0	0%	0	0%	0	0%	0	0%	41	0%	--	0%
4-year College Student	0	0%	0	0%	0	0%	0	0%	2,599	6%	--	1%
Unreported	1,196	3%	593	1%	503	1%	340	1%	347	1%	-71%	1%
Total	44,681	100%	44,509	100%	43,800	100%	44,292	100%	46,740	100%	5%	100%

Source: SDCCD Information System

SDCCD Section I: Headcount and Student Characteristics

Headcount by Primary Language: On average, 93% of the district colleges general student population spoke English as their primary language. There was a 5% increase for those who reported speaking English between Fall 2003 and Fall 2007.

Figure 1.7: District Colleges Headcount by Primary Language

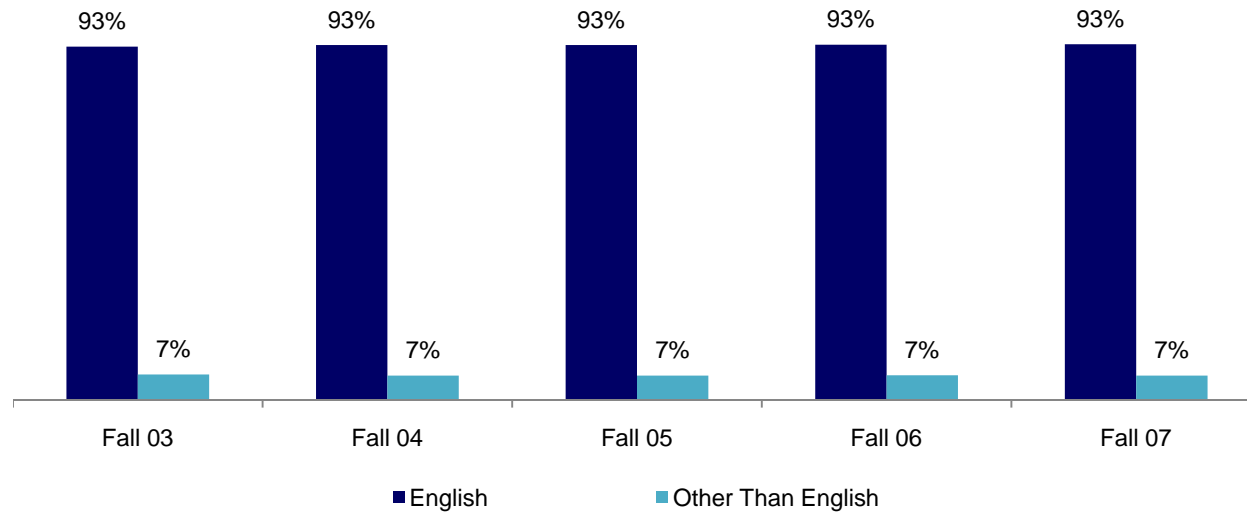


Table 1.7: District Colleges Headcount by Primary Language

	Fall 03		Fall 04		Fall 05		Fall 06		Fall 07		% Change Fall 03 and 07	All Colleges Average Fall 03-07
	#	%	#	%	#	%	#	%	#	%		
English	41,443	93%	41,499	93%	40,837	93%	41,321	93%	43,673	93%	5%	93%
Other Than English	3,023	7%	2,884	7%	2,856	7%	2,925	7%	3,034	7%	0%	7%
Unreported	215	1%	126	0%	107	0%	46	0%	33	0%	-85%	0%
Total	44,681	100%	44,509	100%	43,800	100%	44,292	100%	46,740	100%	5%	100%

Source: SDCCD Information System

SDCCD Section I: Headcount and Student Characteristics

Headcount by Prior Education Level: From Fall 2003 to Fall 2007, 67% of the district colleges general student population reported they were high school graduates. The students who were current high school students increased 38% between Fall 2003 and Fall 2007. Eleven percent of the district colleges general student population had a bachelor's degree or higher.

Figure 1.8: District Colleges Headcount by Prior Education Level

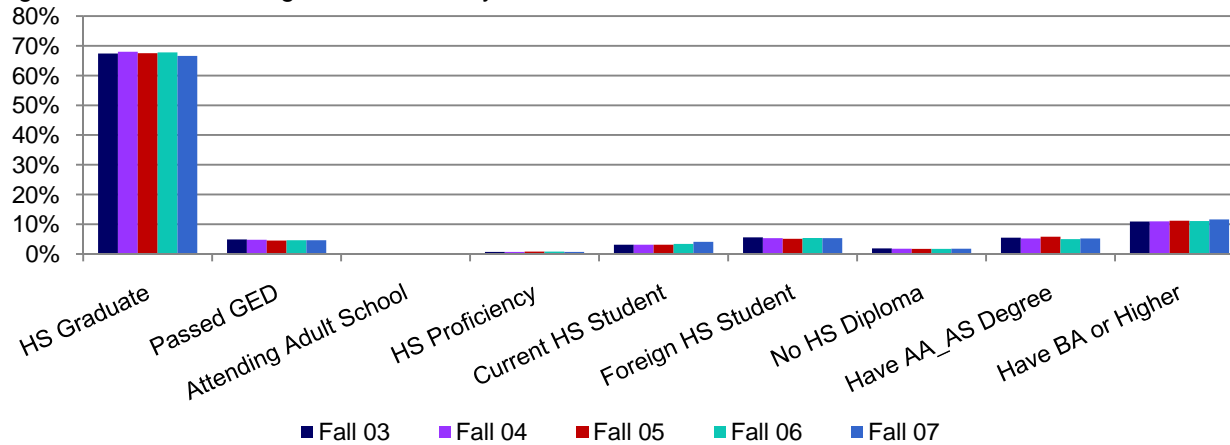


Table 1.8: District Colleges Headcount by Prior Education Level

	Fall 03		Fall 04		Fall 05		Fall 06		Fall 07		% Change Fall 03 and 07	All Colleges Average Fall 03-07
	#	%	#	%	#	%	#	%	#	%		
HS Graduate	30,095	67%	30,259	68%	29,549	68%	30,032	68%	31,108	67%	3%	67%
Passed GED	2,169	5%	2,122	5%	1,974	5%	2,024	5%	2,165	5%	0%	5%
Attending Adult School	75	0%	84	0%	113	0%	101	0%	95	0%	27%	0%
HS Proficiency	312	1%	332	1%	353	1%	342	1%	305	1%	-2%	1%
Current HS Student	1,377	3%	1,371	3%	1,365	3%	1,521	3%	1,897	4%	38%	3%
Foreign HS Student	2,480	6%	2,339	5%	2,252	5%	2,371	5%	2,473	5%	0%	5%
No HS Diploma	862	2%	788	2%	750	2%	754	2%	835	2%	-3%	2%
Have AA_AS Degree	2,451	6%	2,334	5%	2,524	6%	2,223	5%	2,436	5%	-1%	5%
Have BA or Higher	4,857	11%	4,880	11%	4,920	11%	4,924	11%	5,426	12%	12%	11%
Unreported	3	0%	0	0%	0	0%	0	0%	0	0%	-100%	0%
Total	44,681	100%	44,509	100%	43,800	100%	44,292	100%	46,740	100%	5%	100%

Source: SDCCD Information System

SDCCD Section I: Headcount and Student Characteristics

Headcount by Service Areas: Between Fall 2003 and Fall 2007, on average, 30% of students of all district colleges resided within the City service area, 22% of students resided within the Mesa service area and 12% of students resided within the Miramar service area. Thirty-five percent of students lived outside of all of the district college service areas.

Figure 1.9: District Colleges Headcount by Service Area

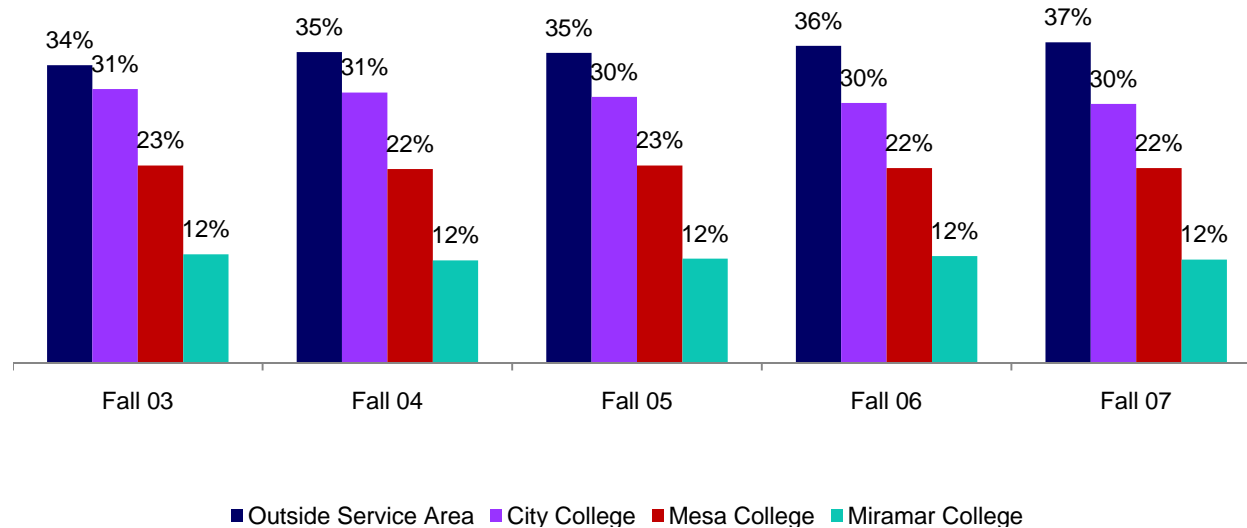


Table 1.9: District Colleges Headcount by Service Area

	Fall 03		Fall 04		Fall 05		Fall 06		Fall 07		% Change Fall 03 and 07	All Colleges Average Fall 03-07
	#	%	#	%	#	%	#	%	#	%		
Outside Service Area	15,138	34%	15,761	35%	15,465	35%	15,969	36%	17,056	37%	13%	35%
City College	13,926	31%	13,694	31%	13,271	30%	13,121	30%	13,799	30%	-1%	30%
Mesa College	10,075	23%	9,853	22%	9,835	23%	9,811	22%	10,386	22%	3%	22%
Miramar College	5,542	12%	5,201	12%	5,229	12%	5,391	12%	5,499	12%	-1%	12%
Total	44,681	100%	44,509	100%	43,800	100%	44,292	100%	46,740	100%	5%	100%

Source: SDCCD Information System

SDCCD Section I: Headcount and Student Characteristics

Headcount by Units Attempted: On average, exactly half (50%) of the students attempted between 3 to 8.9 units between Fall 2003 and Fall 2007. Twenty-nine percent of the district colleges general student population attempted 12 units or more on average, which decreased 3% between Fall 2003 and Fall 2007.

Figure 1.10: District Colleges Headcount by Units Attempted

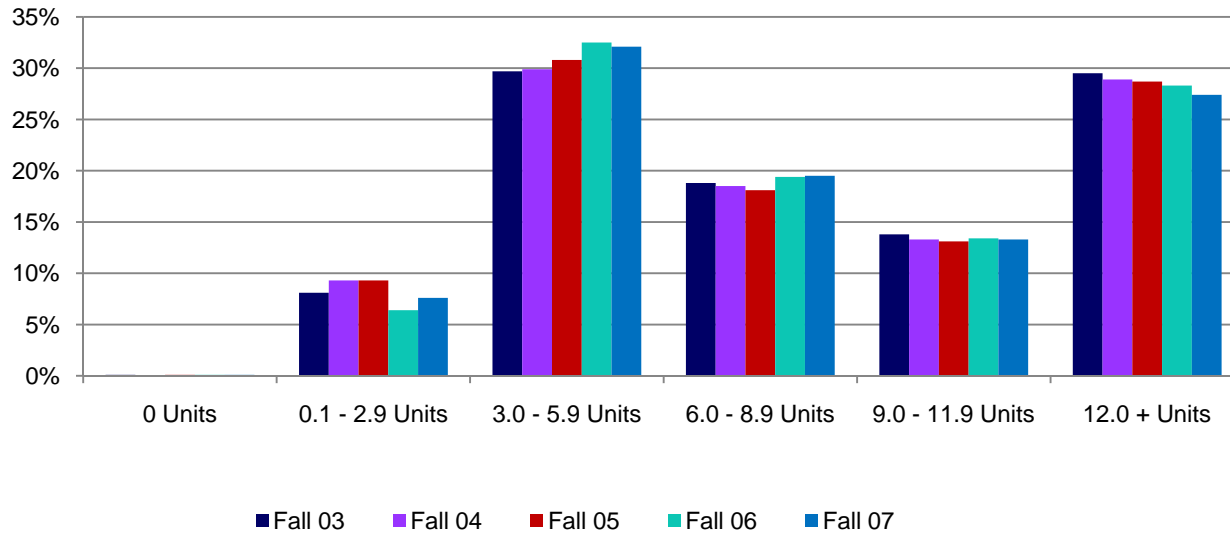


Table 1.10: District Colleges Headcount by Units Attempted

	Fall 03		Fall 04		Fall 05		Fall 06		Fall 07		% Change Fall 03 and 07	All Colleges Average Fall 03-07
	#	%	#	%	#	%	#	%	#	%		
0 Units	30	0%	9	0%	28	0%	40	0%	56	0%	87%	0%
0.1 - 2.9 Units	3,631	8%	4,155	9%	4,067	9%	2,814	6%	3,566	8%	-2%	8%
3.0 - 5.9 Units	13,270	30%	13,305	30%	13,486	31%	14,374	33%	14,989	32%	13%	31%
6.0 - 8.9 Units	8,417	19%	8,250	19%	7,926	18%	8,571	19%	9,110	20%	8%	19%
9.0 - 11.9 Units	6,165	14%	5,929	13%	5,719	13%	5,950	13%	6,219	13%	1%	13%
12.0 + Units	13,168	30%	12,861	29%	12,574	29%	12,543	28%	12,800	27%	-3%	29%
Total	44,681	100%	44,509	100%	43,800	100%	44,292	100%	46,740	100%	5%	100%

Source: SDCCD Information System

SDCCD Section I: Headcount and Student Characteristics

Headcount by First Generation: From Fall 2003 to Fall 2007, on average, 24% of the students reported being first generation college students. Both groups of students, those who were and those who were not first generation college students, displayed an increase in headcount between Fall 2003 and Fall 2007 (18% and 10%, respectively).

Figure 1.11: District Colleges Headcount by First Generation

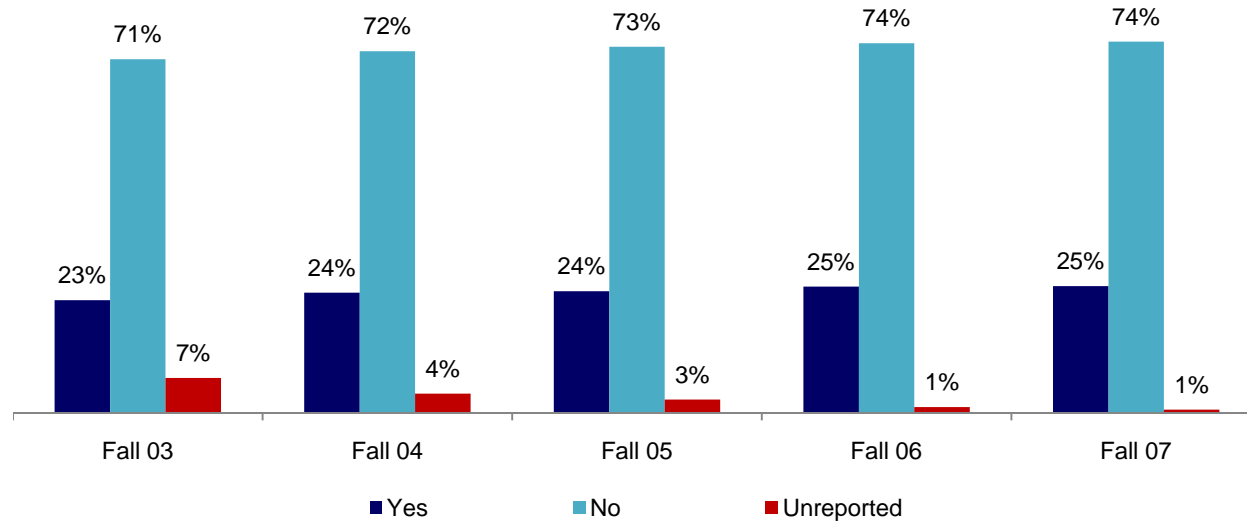


Table 1.11: District Colleges Headcount by First Generation

	Fall 03		Fall 04		Fall 05		Fall 06		Fall 07		% Change Fall 03 and 07	All Colleges Average Fall 03-07
	#	%	#	%	#	%	#	%	#	%		
Yes	10,033	23%	10,686	24%	10,648	24%	11,144	25%	11,839	25%	18%	24%
No	31,522	71%	32,100	72%	31,965	73%	32,628	74%	34,575	74%	10%	73%
Unreported	3,126	7%	1,723	4%	1,187	3%	520	1%	326	1%	-90%	3%
Total	44,681	100%	44,509	100%	43,800	100%	44,292	100%	46,740	100%	5%	100%

Source: SDCCD Information System

SDCCD Section I: Headcount and Student Characteristics

Headcount by Income: Between Fall 2003 and Fall 2007, among those who reported their income levels, almost one-quarter (24%) of the district colleges student population reported making over \$33,000 or more a year on average. The number of students who reported making between \$0-2,999 a year on average increased 72% between 2003/04 and 2007/08. It should be noted that there was a large percentage of students who did not report their income level. Consequently, the data may not be representative of the income level of students at the district colleges.

Figure 1.12: District Colleges Headcount by Income

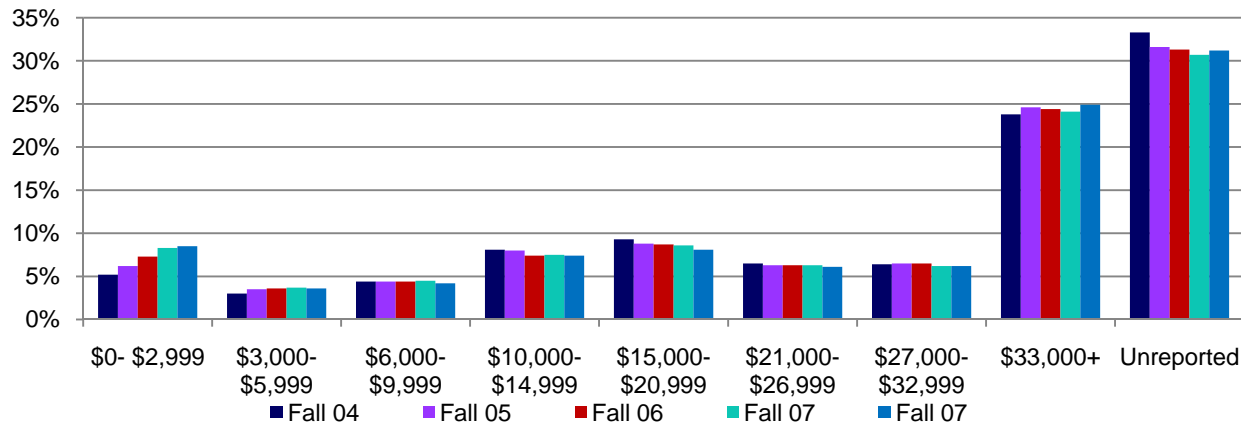


Table 1.12: District Colleges Headcount by Income

	Fall 03		Fall 04		Fall 05		Fall 06		Fall 07		% Change Fall 03 and 07	All Colleges Average Fall 03-07
	#	%	#	%	#	%	#	%	#	%		
\$0-2,999	2,325	5%	2,764	6%	3,211	7%	3,667	8%	3,995	9%	72%	7%
\$3,000-5,999	1,326	3%	1,539	4%	1,566	4%	1,633	4%	1,669	4%	26%	3%
\$6,000-9,999	1,944	4%	1,970	4%	1,938	4%	1,998	5%	1,944	4%	0%	4%
\$10,000-14,999	3,631	8%	3,539	8%	3,263	7%	3,336	8%	3,438	7%	-5%	8%
\$15,000-20,999	4,137	9%	3,937	9%	3,816	9%	3,812	9%	3,783	8%	-9%	9%
\$21,000-26,999	2,917	7%	2,824	6%	2,765	6%	2,792	6%	2,852	6%	-2%	6%
\$27,000-32,999	2,871	6%	2,910	7%	2,829	7%	2,764	6%	2,877	6%	0%	6%
\$33,000+	10,639	24%	10,945	25%	10,703	24%	10,690	24%	11,617	25%	9%	24%
Unreported	14,891	33%	14,081	32%	13,709	31%	13,600	31%	14,565	31%	-2%	32%
Total	44,681	100%	44,509	100%	43,800	100%	44,292	100%	46,740	100%	5%	100%

Source: SDCCD Information System

SDCCD Section I: Headcount and Student Characteristics

Disability Support Programs and Services (DSPS): On average, 97% of the district colleges student population had not received any type of disability support services between Fall 2003 and Fall 2007. Moreover, students within all colleges in the district who had not received disability services increased 5% from Fall 2003 to Fall 2007.

Figure 1.13: District Colleges Headcount by Support Programs and Services (DSPS)

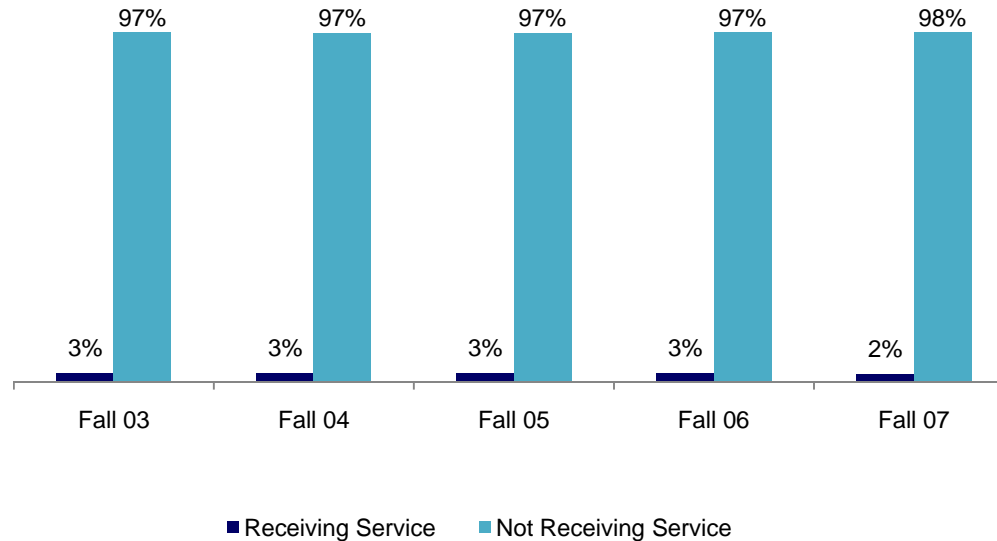


Table 1.13: District Colleges Headcount by Disability Support Programs and Services (DSPS)

	Fall 03		Fall 04		Fall 05		Fall 06		Fall 07		% Change Fall 03 and 07	All Colleges Average Fall 03-07
	#	%	#	%	#	%	#	%	#	%		
Receiving Service	1,146	3%	1,206	3%	1,177	3%	1,173	3%	1,145	2%	0%	3%
Not Receiving Service	43,535	97%	43,303	97%	42,623	97%	43,119	97%	45,595	98%	5%	97%
Total	44,681	100%	44,509	100%	43,800	100%	44,292	100%	46,740	100%	5%	100%

Source: SDCCD Information System

SDCCD Section I: Headcount and Student Characteristics

Headcount by Extended Opportunity Programs and Services (EOPS): Ninety-seven percent of the district colleges student population had not received EOPS services between Fall 2003 and Fall 2007. There was a 2% decrease in the number of students who received EOPS services from Fall 2003 to Fall 2007. In contrast, there was a 5% increase in the number of students who had not received EOPS services.

Figure 1.14: District Colleges Headcount by Extended Opportunity Programs and Services (EOPS)

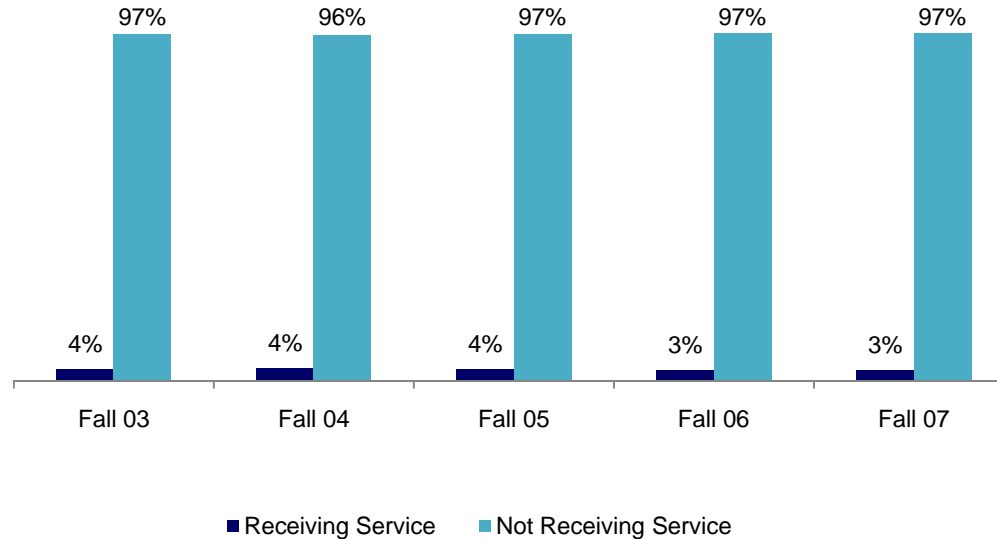


Table 1.14: District Colleges Headcount by Extended Opportunity Programs and Services (EOPS)

	Fall 03		Fall 04		Fall 05		Fall 06		Fall 07		% Change Fall 03 and 07	All Colleges Average Fall 03-07
	#	%	#	%	#	%	#	%	#	%		
Receiving Service	1,554	4%	1,595	4%	1,544	4%	1,396	3%	1,519	3%	-2%	3%
Not Receiving Service	43,127	97%	42,914	96%	42,256	97%	42,896	97%	45,221	97%	5%	97%
Total	44,681	100%	44,509	100%	43,800	100%	44,292	100%	46,740	100%	5%	100%

Source: SDCCD Information System

SDCCD Section II: Term Persistence Rates

This section of the Fact Book contains information on student term persistence rates. For purposes of this report, term persistence rate is the measure of students who were enrolled in a fall term as of census (eliminating drops and never attends prior to census) and who completed the term with a grade notation of (A, B, C, CR, D, F, I, NC, RD), then were enrolled as of census in the subsequent spring term and received a grade notation for that term. The information in this section includes five years of data and is broken down by gender, age and ethnicity.

SDCCD Section II: Term Persistence Rates

Overall Term Persistence: The average term persistence rate for first-time students from the district colleges was 62% between Fall 2003 and Fall 2007 cohorts. Overall, persistence rates increased by 3%, from a low of 60% in the Fall 2003 cohort to a high of 63% in the Fall 2007 cohort.

Figure 2.1: District Colleges First-Time Student Term Persistence

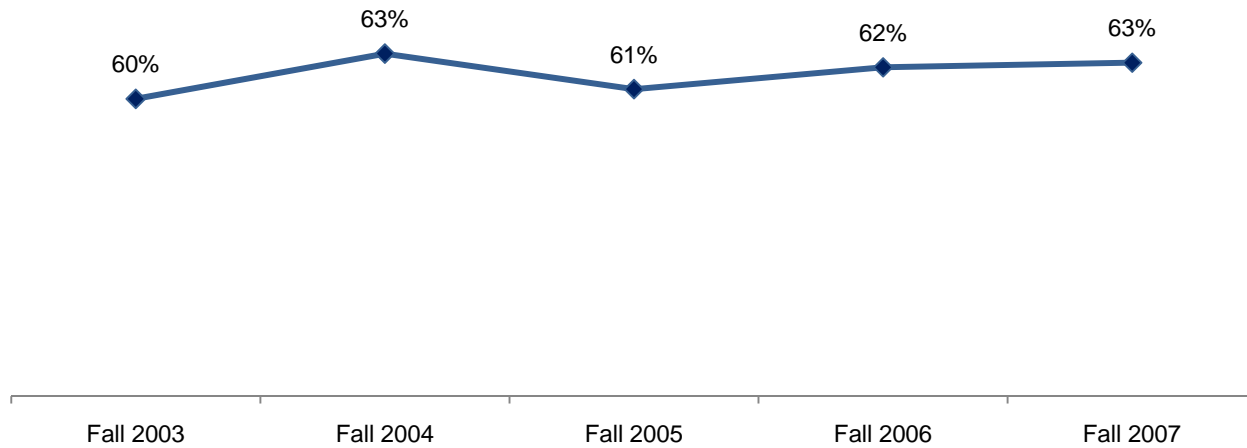


Table 2.1: District Colleges First-Time Student Term Persistence

Cohort	Fall	Spring	Persistence
Fall 2003	3,923	2,363	60%
Fall 2004	3,884	2,459	63%
Fall 2005	3,698	2,252	61%
Fall 2006	4,636	2,892	62%
Fall 2007	4,823	3,024	63%
Average			62%

Source: SDCCD Information System

SDCCD Section II: Term Persistence Rates

Term Persistence by Gender: On average, term persistence rates of female students (64%) were higher than their male student counterpart (60%) between Fall 2003 and Fall 2007 cohorts. The trend for both male and female students increased between the Fall 2003 and Fall 2007 cohorts (4% and 1%, respectively).

Figure 2.2: District Colleges First-Time Student Term Persistence by Gender

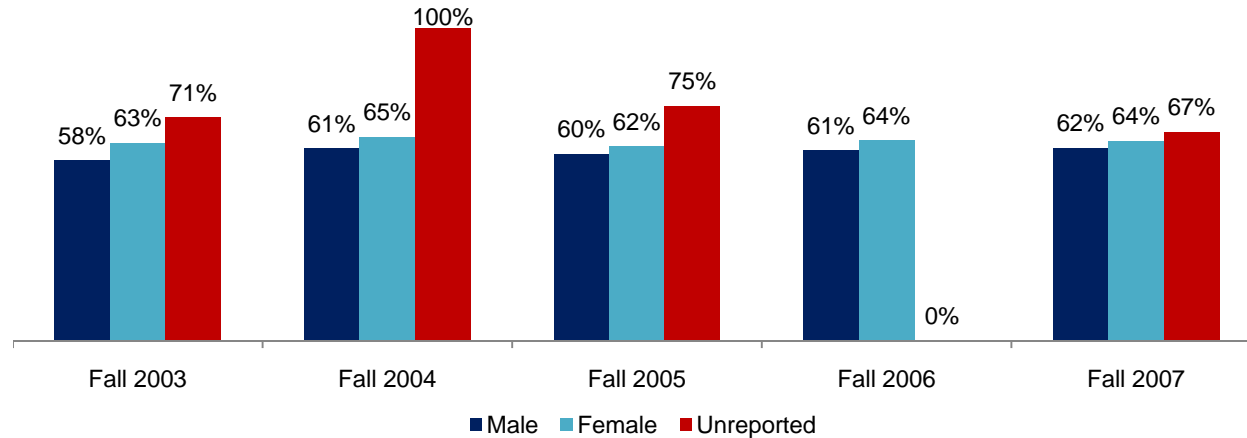


Table 2.2: District Colleges First-Time Student Term Persistence by Gender

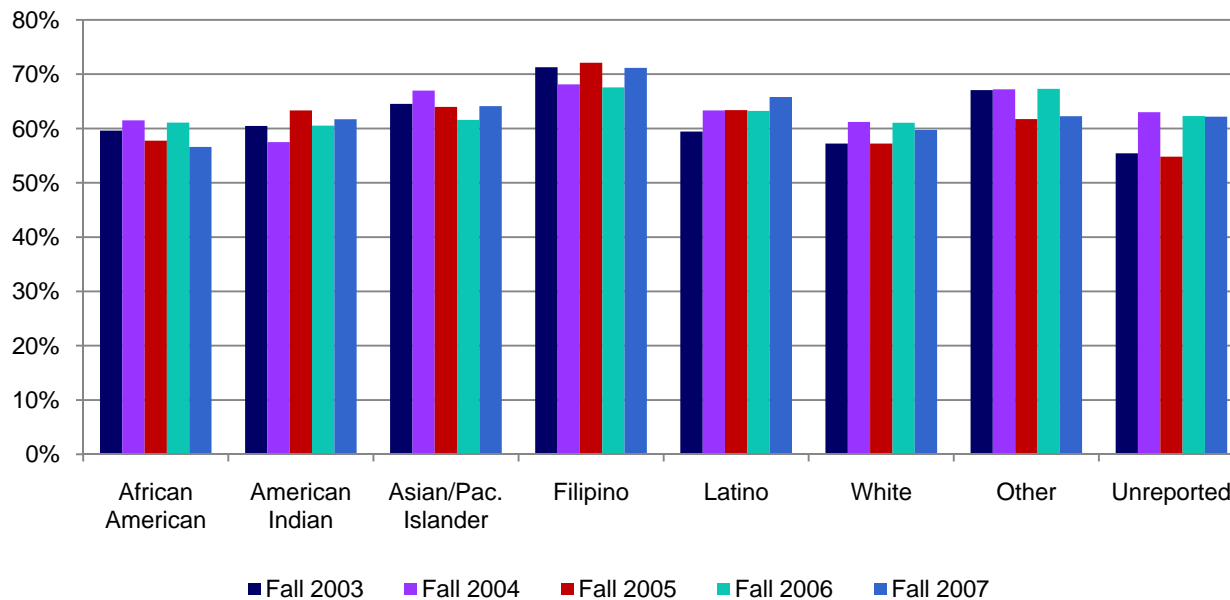
Cohort	Male			Female			Unreported		
	Fall	Spring	Persistence	Fall	Spring	Persistence	Fall	Spring	Persistence
Fall 2003	2,105	1,213	58%	1,811	1,145	63%	7	5	71%
Fall 2004	1,983	1,219	61%	1,899	1,238	65%	2	2	100%
Fall 2005	1,986	1,187	60%	1,708	1,062	62%	4	3	75%
Fall 2006	2,354	1,431	61%	2,282	1,461	64%	0	0	--
Fall 2007	2,458	1,514	62%	2,362	1,508	64%	3	2	67%
Average			60%			64%			75%

Source: SDCCD Information System

SDCCD Section II: Term Persistence Rates

Term Persistence by Ethnicity: The ethnic groups with the highest term persistence rates on average were Filipino students (70%), students categorized as 'Other' ethnicities (65%) and Asian/Pacific Islander students (64%). Persistence rates peaked to a high of 72% for Filipino students in the Fall 2005 cohort among all ethnic groups. Persistence rates for Latino and African American students peaked to a high of 66% and 61% respectively in the Fall 2007 and Fall 2004 and 2006 cohorts. Persistence rates for students who were categorized as 'Other' ethnicities decreased 5%, while persistence rates for Latino students increased 7%, from 59% in the Fall 2003 cohort to 66% in the Fall 2007 cohort.

Figure 2.3: District Colleges First-Time Student Term Persistence by Ethnicity



SDCCD Section II: Term Persistence Rates

Table 2.3: District Colleges First-Time Student Term Persistence by Ethnicity

Cohort	African American			American Indian			Asian/Pac. Islander			Filipino		
	Fall	Spring	Persistence	Fall	Spring	Persistence	Fall	Spring	Persistence	Fall	Spring	Persistence
Fall 2003	359	214	60%	43	26	60%	482	311	65%	282	201	71%
Fall 2004	322	198	61%	40	23	58%	551	369	67%	251	171	68%
Fall 2005	322	186	58%	30	19	63%	569	364	64%	233	168	72%
Fall 2006	388	237	61%	38	23	61%	682	420	62%	259	175	68%
Fall 2007	431	244	57%	47	29	62%	697	447	64%	260	185	71%
Average			59%			61%			64%			70%

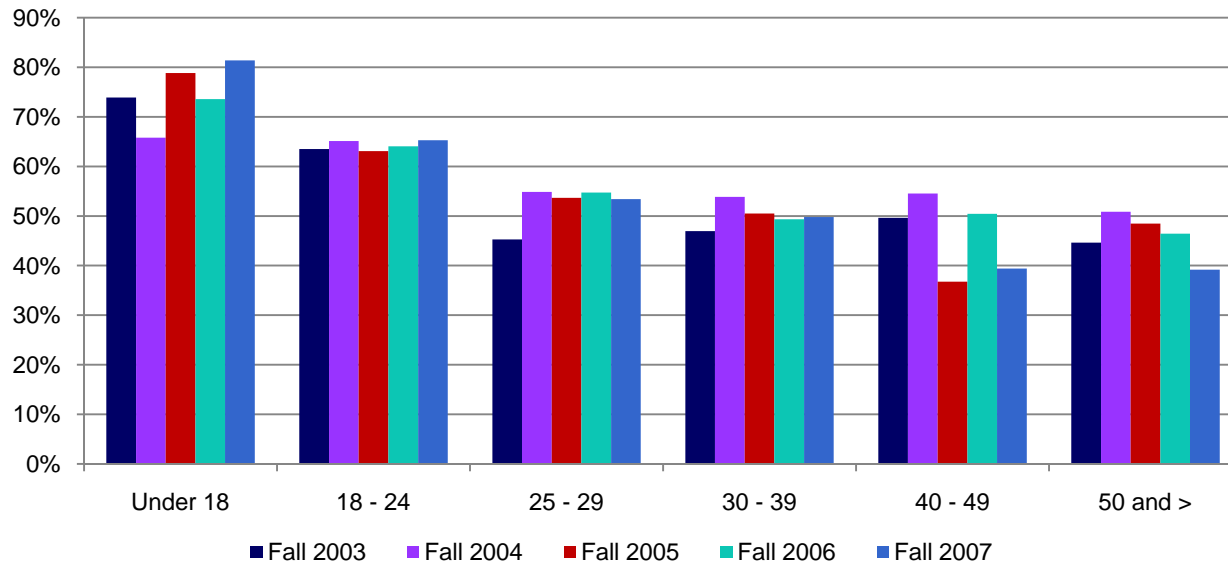
Cohort	Latino			White			Other			Unreported		
	Fall	Spring	Persistence	Fall	Spring	Persistence	Fall	Spring	Persistence	Fall	Spring	Persistence
Fall 2003	966	574	59%	1,384	792	57%	167	112	67%	240	133	55%
Fall 2004	1,006	637	63%	1,338	819	61%	122	82	67%	254	160	63%
Fall 2005	964	611	63%	1,213	694	57%	128	79	62%	239	131	55%
Fall 2006	1,251	791	63%	1,541	941	61%	156	105	67%	321	200	62%
Fall 2007	1,398	920	66%	1,564	934	60%	151	94	62%	275	171	62%
Average			63%			59%			65%			60%

Source: SDCCD Information System

SDCCD Section II: Term Persistence Rates

Term Persistence by Age: A general trend among Fall 2003 to Fall 2007 cohorts showed as age increased, term persistence rates decreased. For students under age 18, persistence rates peaked to a high of 81% in the Fall 2007 cohort. Persistence rates for students ages 25-29 increased 8%, from 45% in the Fall 2003 cohort to 53% in the Fall 2007 cohort. However, persistence rates for students between ages 40 and 49 years old decreased 11%, from 50% in the Fall 2003 cohort to 39% in the Fall 2007 cohort.

Figure 2.4: District Colleges First-Time Student Term Persistence by Age



SDCCD Section II: Term Persistence Rates

Table 2.4: District Colleges First-Time Student Term Persistence by Age

Cohort	Under 18			18 - 24			25 - 29		
	Fall	Spring	Persistence	Fall	Spring	Persistence	Fall	Spring	Persistence
Fall 2003	46	34	74%	3,093	1,964	63%	327	148	45%
Fall 2004	38	25	66%	3,201	2,085	65%	268	147	55%
Fall 2005	52	41	79%	3,017	1,903	63%	246	132	54%
Fall 2006	53	39	74%	3,924	2,514	64%	265	145	55%
Fall 2007	43	35	81%	4,002	2,612	65%	322	172	53%
Average			75%			64%			52%

Cohort	30 - 39			40 - 49			50 and >		
	Fall	Spring	Persistence	Fall	Spring	Persistence	Fall	Spring	Persistence
Fall 2003	262	123	47%	139	69	50%	56	25	45%
Fall 2004	208	112	54%	110	60	55%	59	30	51%
Fall 2005	200	101	51%	117	43	37%	66	32	48%
Fall 2006	223	110	49%	115	58	50%	56	26	46%
Fall 2007	245	122	50%	137	54	39%	74	29	39%
Average			50%			46%			46%

Source: SDCCD Information System

SDCCD Section III: Student Outcomes

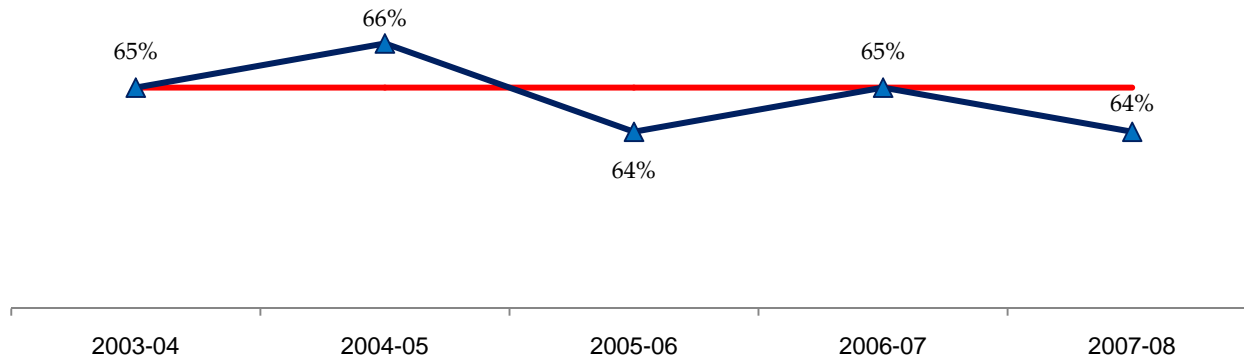
This section of the Fact Book contains information on various student outcomes which may be considered indirect assessments of student learning. The outcomes included in this section are: 1) Annual Student Success Rates, 2) Annual Retention Rates, 3) Annual GPA, 4) Annual Awards Conferred, and 5) Annual Transfers. All of the information in this section includes five years of data and is broken down by gender, age and ethnicity. The following describes in detail each of the outcomes listed.

- 1) **Success Rates.** The first outcome reported in this section is successful course completion, or student success rate. For purposes of this report, the success rate is the percentage of students who completed a course with a grade of A, B, C, or CR out of total enrollments as of census.
- 2) **Retention Rates.** The second outcome reported in this section is retention. For purposes of this report, the retention rate is the percentage of students who completed a course with a grade of A, B, C, D, F, CR, NC, I or RD out of total enrollments as of census.
- 3) **Annual GPA.** The third outcome reported in this section is annual GPA. For purposes of this report, the annual GPA is the cumulative grade point average of all courses taken for a grade in one academic year.
- 4) **Annual Awards Conferred.** The fourth outcome reported in this section is the annual awards conferred. For purposes of this report, the annual awards conferred are the total number of associate degrees and certificates awarded in a single academic year (summer, fall and spring).
- 5) **Annual Transfers.** The last outcome reported in this section is the number of annual students who transfer annually. For purposes of this report, the annual transfers are the total number of students who transferred during an academic year to either a CSU, UC, private or Out-of-State four-year institution.

SDCCD Section III: Student Outcomes (Success Rates)

Overall Success Rates: The annual success rates for all colleges in the district remained relatively stable from 2003/04 to 2007/08, with an average of 65%.

Figure 3.1: District Colleges Success Rates



*Red line marks District Colleges average 2003-08 success rate.

Table 3.1: District Colleges Success Rates

	2003-04	2004-05	2005-06	2006-07	2007-08	All Colleges Average 2003-08
	%	%	%	%	%	
Average	65%	66%	64%	65%	64%	65%

Source: SDCCD Information System

Note: Tutoring classes are excluded.

SDCCD Section III: Student Outcomes (Success Rates)

Success Rates by Gender: The average success rate of female students (66%) was higher compared to the average success rate of their male student counterpart (64%) between 2003/04 and 2007/08. Female students had a higher success rate average compared to the average success rate of the general student population (65%), while male students average success rate fell below the same average.

Figure 3.2: District Colleges Success Rates by Gender

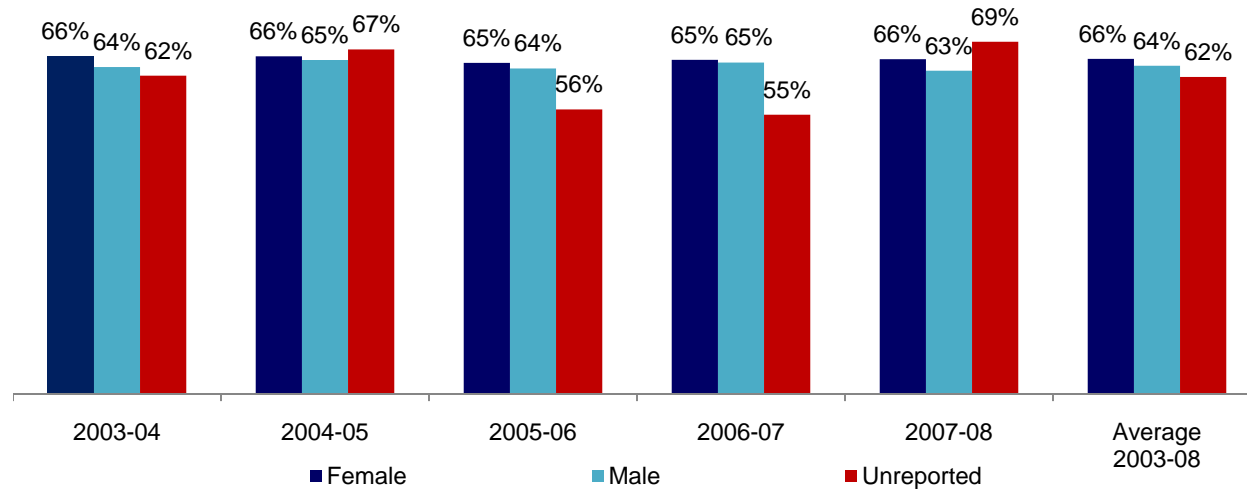


Table 3.2: District Colleges Success Rates by Gender

	2003-04	2004-05	2005-06	2006-07	2007-08	All Colleges Average 2003-08
	%	%	%	%	%	
Female	66%	66%	65%	65%	66%	66%
Male	64%	65%	64%	65%	63%	64%
Unreported	62%	67%	56%	55%	69%	62%
Average	65%	66%	64%	65%	64%	65%

Source: SDCCD Information System
 Note: Tutoring classes are excluded.

SDCCD Section III: Student Outcomes (Success Rates)

Success Rates by Ethnicity: On average, the ethnic groups with the highest success rates were White students (69%), Asian/Pacific Islander students (69%) and Filipino students (65%) between 2003/04 and 2007/08. Success rates for African American, American Indian, Latino and students categorized as 'Other' ethnicities fell below the success rate average of the district colleges general student population (65%).

Figure 3.3: District Colleges Success Rates by Ethnicity

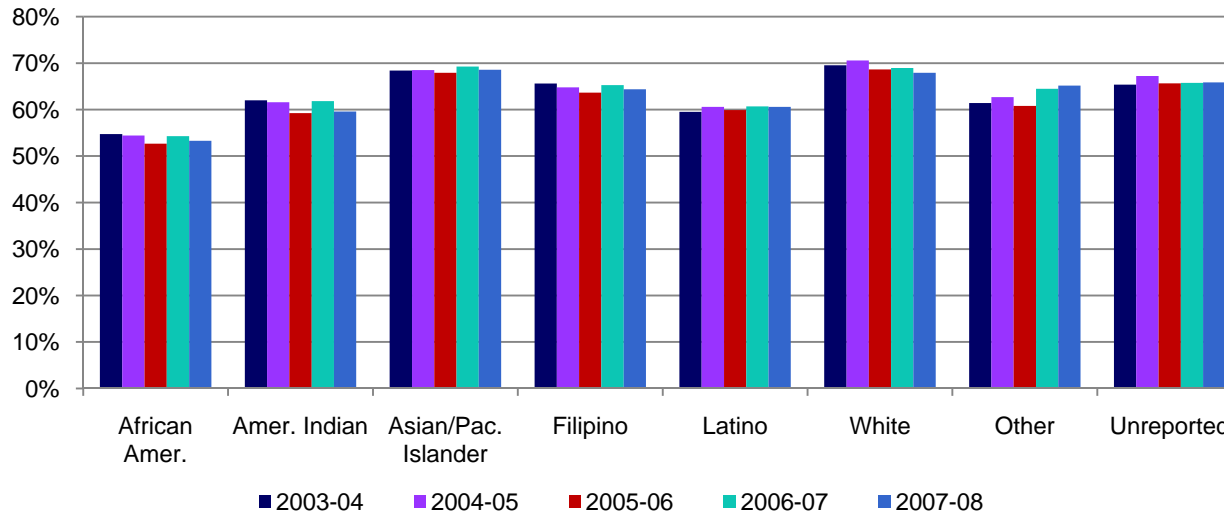


Table 3.3: District Colleges Success Rates by Ethnicity

	2003-04	2004-05	2005-06	2006-07	2007-08	All Colleges Average 2003-08
	%	%	%	%	%	
African American	55%	54%	53%	54%	53%	54%
American Indian	62%	62%	59%	62%	60%	61%
Asian/Pac. Islander	68%	69%	68%	69%	69%	69%
Filipino	66%	65%	64%	65%	64%	65%
Latino	60%	61%	60%	61%	61%	60%
White	70%	71%	69%	69%	68%	69%
Other	61%	63%	61%	64%	65%	63%
Unreported	65%	67%	66%	66%	66%	66%
Average	65%	66%	64%	65%	64%	65%

Source: SDCCD Information System

Note: Tutoring classes are excluded.

SDCCD Section III: Student Outcomes (Success Rates)

Success Rates by Age: A general trend showed, on average, as age increased so did success rates. Students under age 18 generally displayed a downward trend in success rates, from 79% in 2003/04 to 56% in 2007/08. Students under the age of 24 fell below the success rate average of the district colleges general student population (65%).

Figure 3.4: District Colleges Success Rates by Age

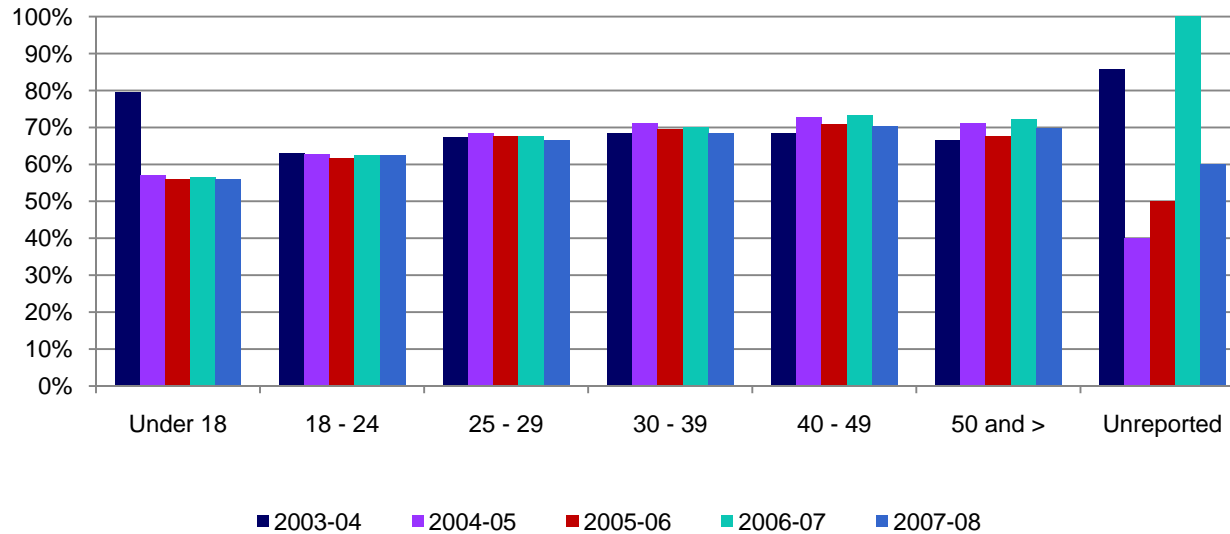


Table 3.4: District Colleges Success Rates by Age

	2003-04	2004-05	2005-06	2006-07	2007-08	All Colleges Average 2003-08
	%	%	%	%	%	
Under 18	79%	57%	56%	56%	56%	60%
18 - 24	63%	63%	62%	63%	62%	62%
25 - 29	67%	68%	68%	68%	67%	68%
30 - 39	68%	71%	69%	70%	68%	70%
40 - 49	68%	73%	71%	73%	70%	71%
50 and >	66%	71%	68%	72%	70%	69%
Unreported	86%	40%	50%	100%	60%	65%
Average	65%	66%	64%	65%	64%	65%

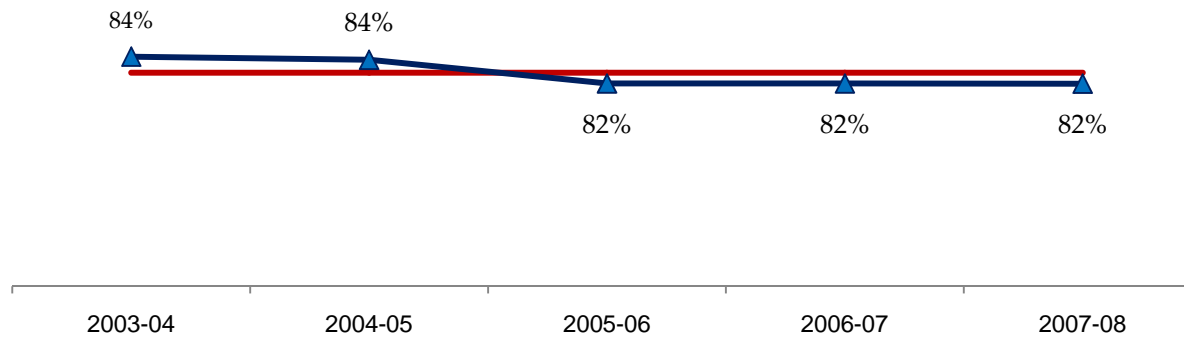
Source: SDCCD Information System

Note: Tutoring classes are excluded.

SDCCD Section III: Student Outcomes (Retention Rates)

Overall Retention Rates: The annual retention rates for all colleges in the district displayed a mild decreasing trend from 84% in 2003/04 to 82% in 2007/08, with an average of 83%.

Figure 3.5: District Colleges Retention Rates



*Red line marks District Colleges average 2003-08 retention rate.

Table 3.5: District Colleges Retention Rates

	2003-04	2004-05	2005-06	2006-07	2007-08	All Colleges Average 2003-08
	%	%	%	%	%	
Average	84%	84%	82%	82%	82%	83%

Source: SDCCD Information System

Note: Tutoring classes are excluded.

SDCCD Section III: Student Outcomes (Retention Rates)

Retention Rates by Gender: For both male and female students, retention rates showed a downward trend from 2003/04 to 2007/08. On average, male retention rates (83%) were comparable to their female counterpart (83%).

Figure 3.6: District Colleges Retention Rates by Gender

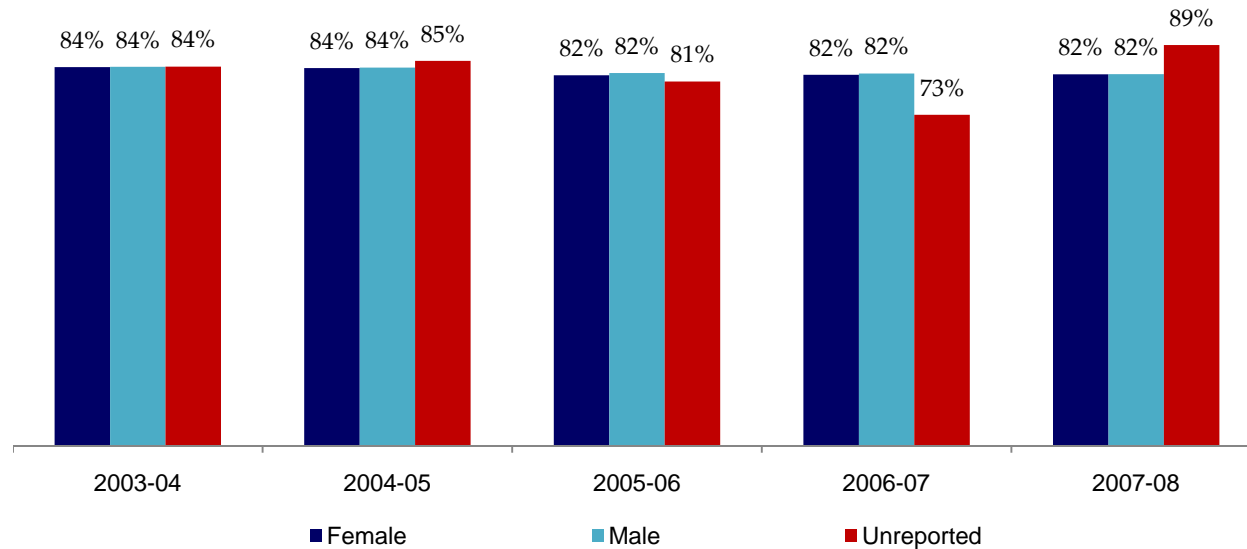


Table 3.6: District Colleges Retention Rates by Gender

	2003-04	2004-05	2005-06	2006-07	2007-08	All Colleges Average 2003-08
	%	%	%	%	%	
Female	84%	84%	82%	82%	82%	83%
Male	84%	84%	82%	82%	82%	83%
Unreported	84%	85%	81%	73%	89%	83%
Average	84%	84%	82%	82%	82%	83%

Source: SDCCD Information System
Note: Tutoring classes are excluded.

SDCCD Section III: Student Outcomes (Retention Rates)

Retention Rates by Ethnicity: Between 2003/04 and 2007/08, ethnic groups with the highest retention rates on average were Asian/Pacific Islander students (84%), White students (84%), students categorized as 'Other' ethnicities (83%), and Filipino students (83%). Retention rates for African American, American Indian, and Latino students were lower compared to the average retention rate of the district colleges general student population (83%). Most of the ethnicities showed a general decreasing trend in retention rates between 2003/04 and 2007/08.

Figure 3.7: District Colleges Retention Rates by Ethnicity

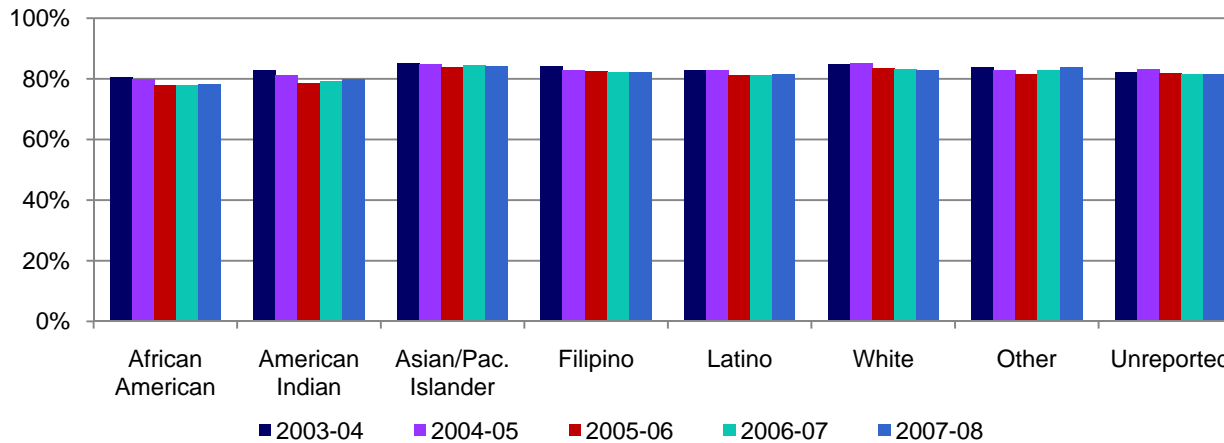


Table 3.7: District Colleges Retention Rates by Ethnicity

	2003-04	2004-05	2005-06	2006-07	2007-08	All Colleges Average 2003-08
	%	%	%	%	%	
African Amer.	80%	80%	78%	78%	78%	79%
Amer. Indian	83%	81%	79%	79%	80%	81%
Asian/Pac. Islander	85%	85%	84%	84%	84%	84%
Filipino	84%	83%	82%	82%	82%	83%
Latino	83%	83%	81%	81%	82%	82%
White	85%	85%	83%	83%	83%	84%
Other	84%	83%	82%	83%	84%	83%
Unreported	82%	83%	82%	82%	82%	82%
Average	84%	84%	82%	82%	82%	83%

Source: SDCCD Information System
Note: Tutoring classes are excluded.

SDCCD Section III: Student Outcomes (Retention Rates)

Retention Rates by Age: From 2003/04 to 2007/08, the age cohorts with the highest retention rates, on average, were students who were below 18 years old (93%), students between ages 40 to 49 years old (84%), and students who were age 50 years and older (84%). Students who were between ages 18-39 years old generally showed a downward trend in retention rates.

Figure 3.8: District Colleges Retention Rates by Age

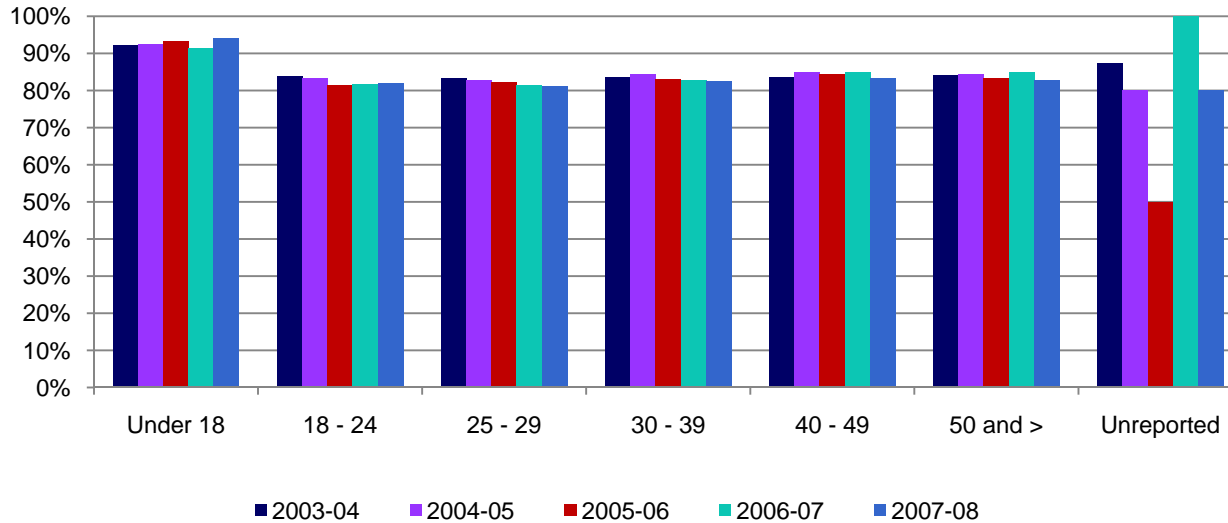


Table 3.8: District Colleges Retention Rates by Age

	2003-04	2004-05	2005-06	2006-07	2007-08	All Colleges Average 2003-08
	%	%	%	%	%	
Under 18	92%	93%	93%	91%	94%	93%
18 - 24	84%	83%	82%	82%	82%	83%
25 - 29	83%	83%	82%	81%	81%	82%
30 - 39	84%	84%	83%	83%	82%	83%
40 - 49	84%	85%	85%	85%	83%	84%
50 and >	84%	85%	83%	85%	83%	84%
Unreported	88%	80%	50%	100%	80%	81%
Average	84%	84%	82%	82%	82%	83%

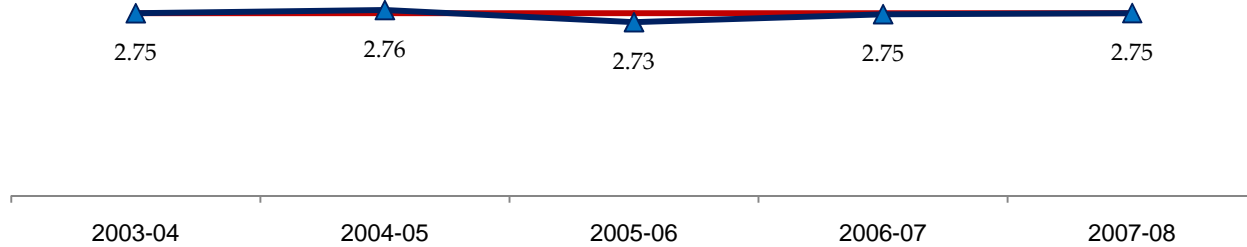
Source: SDCCD Information System

Note: Tutoring classes are excluded.

SDCCD Section III: Student Outcomes (Annual GPA)

Overall Annual GPA: The annual GPA for all colleges in the district remained relatively stable between 2003/04 and 2007/08, with an average of 2.75.

Figure 3.9: District Colleges Annual GPA



*Red line marks District Colleges average 2003-08 GPA.

Table 3.9: District Colleges Annual GPA

	2003-04	2004-05	2005-06	2006-07	2007-08	All Colleges Average 2003-08
	#	#	#	#	#	
Average	2.75	2.76	2.73	2.75	2.75	2.75

Source: SDCCD Information System

SDCCD Section III: Student Outcomes (Annual GPA)

Annual GPA by Gender: From 2003/04 to 2007/08, female students, on average, had higher GPAs than their male counterpart (2.78 and 2.71, respectively). The annual average GPA for female students was higher than the annual average GPA of the district colleges general student population (2.75). The annual average GPA for males fell below the same average.

Figure 3.10: District Colleges Annual GPA by Gender

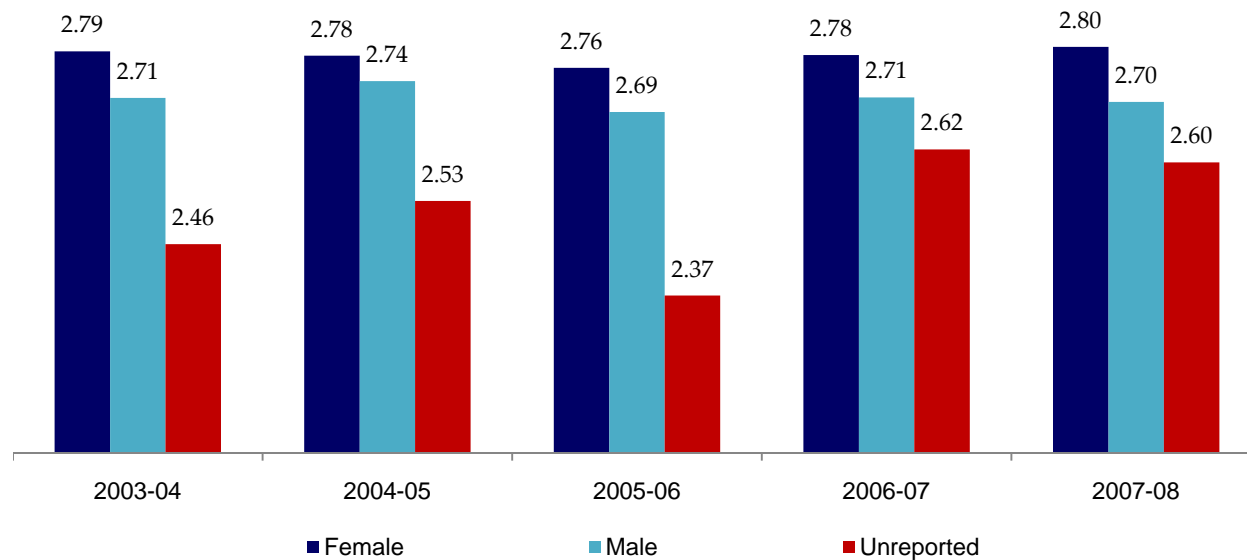


Table 3.10: District Colleges Annual GPA by Gender

	2003-04	2004-05	2005-06	2006-07	2007-08	All Colleges Average 2003-08
	#	#	#	#	#	
Female	2.79	2.78	2.76	2.78	2.80	2.78
Male	2.71	2.74	2.69	2.71	2.70	2.71
Unreported	2.46	2.53	2.37	2.62	2.60	2.49
Average	2.75	2.76	2.73	2.75	2.75	2.75

Source: SDCCD Information System

SDCCD Section III: Student Outcomes (Annual GPA)

Annual GPA by Ethnicity: White students (2.93) and Asian/Pacific Islander students (2.82) had the highest GPAs on average between 2003/04 and 2007/08. Annual GPAs for African American, American Indian, Filipino, Latino and students categorized as 'Other' ethnicities fell below the annual average GPA of the district colleges general student population (2.75), while GPAs for Asian/Pacific Islander and White students exceeded the same average.

Figure 3.11: District Colleges Annual GPA by Ethnicity

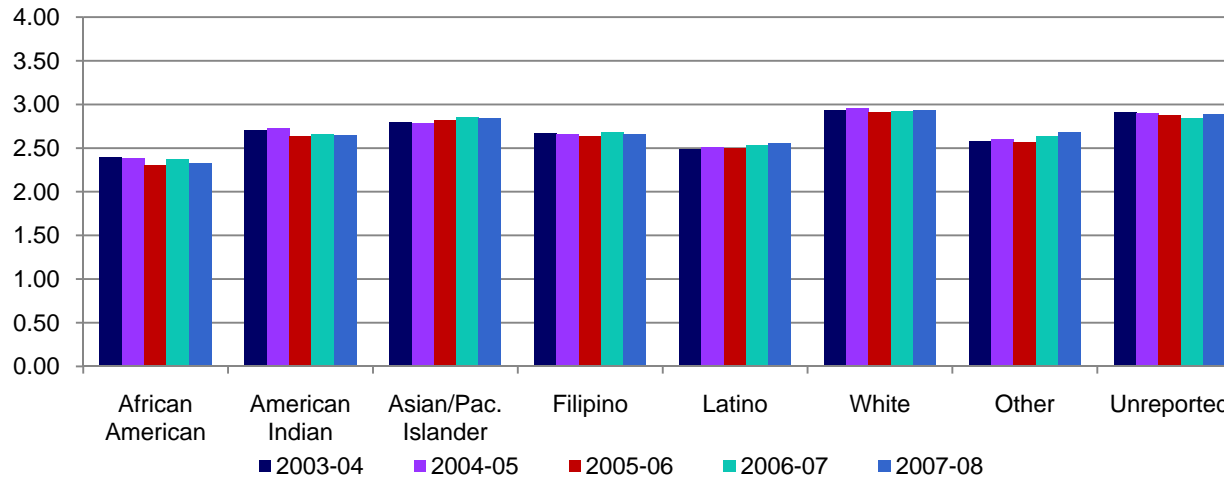


Table 3.11: District Colleges GPA by Ethnicity

	2003-04	2004-05	2005-06	2006-07	2007-08	All Colleges Average 2003-08
	#	#	#	#	#	
African Amer.	2.39	2.39	2.30	2.37	2.32	2.36
Amer. Indian	2.70	2.73	2.64	2.66	2.65	2.68
Asian/Pac. Islander	2.79	2.79	2.82	2.85	2.84	2.82
Filipino	2.67	2.66	2.64	2.68	2.66	2.66
Latino	2.49	2.51	2.50	2.53	2.55	2.52
White	2.94	2.96	2.91	2.92	2.93	2.93
Other	2.58	2.61	2.56	2.64	2.68	2.61
Unreported	2.91	2.90	2.88	2.84	2.88	2.88
Average	2.75	2.76	2.73	2.75	2.75	2.75

Source: SDCCD Information System

SDCCD III: Student Outcomes (Annual GPA)

Annual GPA by Age: A general trend between 2003/04 and 2007/08 showed, on average, as age increased so did GPA. Students who ranged between 18 and 24 years old fell below the district colleges general student population annual GPA average of 2.75.

Figure 3.12: District Colleges Annual GPA by Age

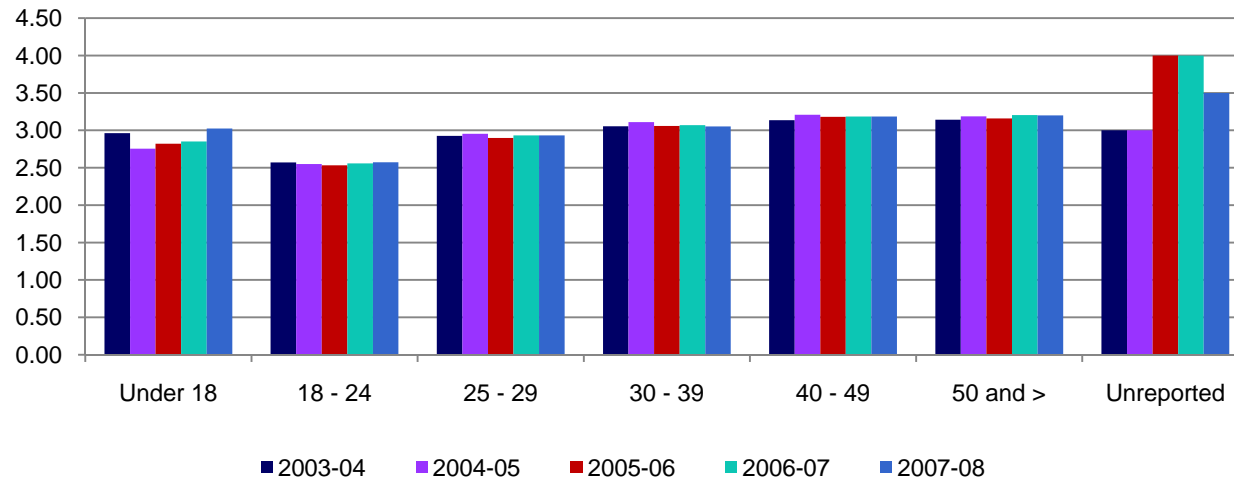


Table 3.12: District Colleges Annual GPA by Age

	2003-04	2004-05	2005-06	2006-07	2007-08	All Colleges Average 2003-08
	#	#	#	#	#	
Under 18	2.96	2.75	2.82	2.85	3.03	2.90
18 - 24	2.57	2.55	2.53	2.56	2.57	2.56
25 - 29	2.93	2.95	2.90	2.93	2.93	2.93
30 - 39	3.05	3.11	3.06	3.07	3.05	3.07
40 - 49	3.14	3.21	3.18	3.19	3.19	3.18
50 and >	3.14	3.19	3.16	3.20	3.20	3.18
Unreported	3.00	3.00	4.00	4.00	3.50	3.25
Average	2.75	2.76	2.73	2.75	2.75	2.75

Source: SDCCD Information System

SDCCD Section III: Student Outcomes (Annual Awards Conferred)

Annual Awards Conferred: On average, 68% of the total awards conferred within all colleges in the district were associate degrees. The number of mini-certificates requiring 18 or fewer units, showed a 3% increase from 2003/04 to 2007/08. In contrast, the certificates that require 60 units or more decreased 53%, from 47 in 2003/04 to 22 in 2007/08.

Figure 3.13: District Colleges Annual Awards Conferred

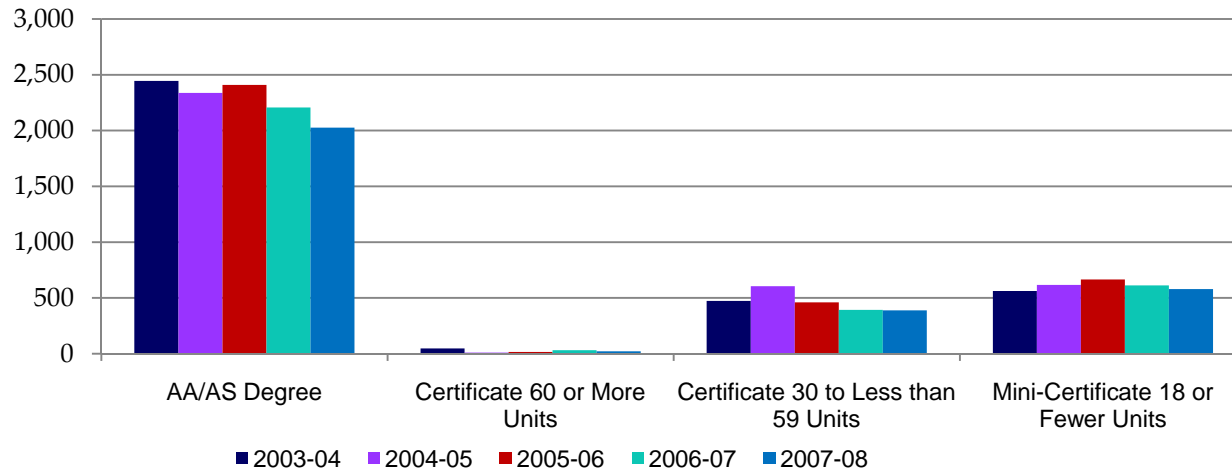


Table 3.13: District Colleges Annual Awards Conferred

	2003-04		2004-05		2005-06		2006-07		2007-08		% Change Fall 03 and 07	All Colleges Average Fall 03-07
	#	%	#	%	#	%	#	%	#	%		
AA/AS Degree	2,445	69%	2,337	65%	2,409	68%	2,207	68%	2,026	67%	-17%	68%
Certificate 60 or More Units	47	1%	10	0%	16	0%	31	1%	22	1%	-53%	1%
Certificate 30 to Less than 59 Units	473	13%	605	17%	460	13%	393	12%	389	13%	-18%	14%
Mini-Certificate 18 or Fewer Units	562	16%	617	17%	665	19%	612	19%	580	19%	3%	18%
Total	3,527	100%	3,569	100%	3,550	100%	3,243	100%	3,017	100%	-14%	100%

Source: SDCCD Information System

SDCCD Section III: Student Outcomes (Annual Awards Conferred)

Annual Awards Conferred by Gender: Of the total awards conferred within all colleges in the district, female students (57%) received more associate degrees, on average, than their male student counterpart (43%) between 2003/04 and 2007/08. Both male and female students displayed a decreased trend of 15% and 19%, respectively, for the number of associate degrees awarded between 2003/04 and 2007/08. For mini-certificates requiring 18 or fewer units, male students showed a 34% increase between 2003/04 and 2007/08. In contrast, the certificates that require 60 units or more decreased 38% between 2003/04 and 2007/08.

Figure 3.14.1: District Colleges Annual AA/AS Degrees by Gender

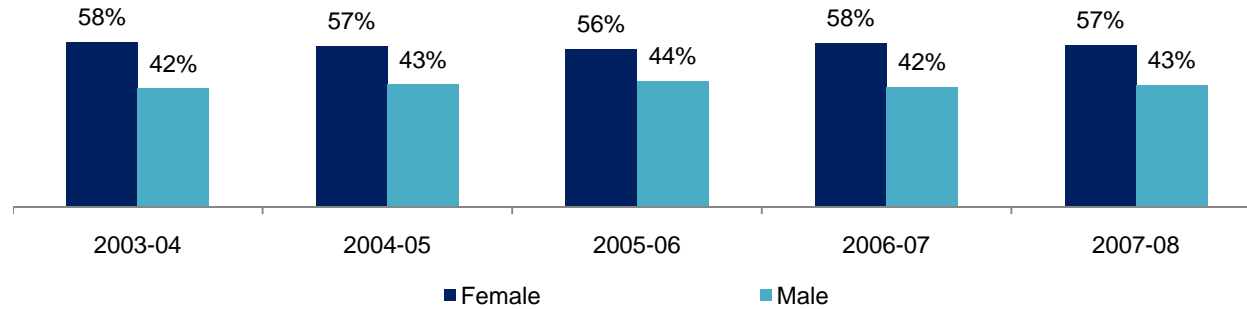
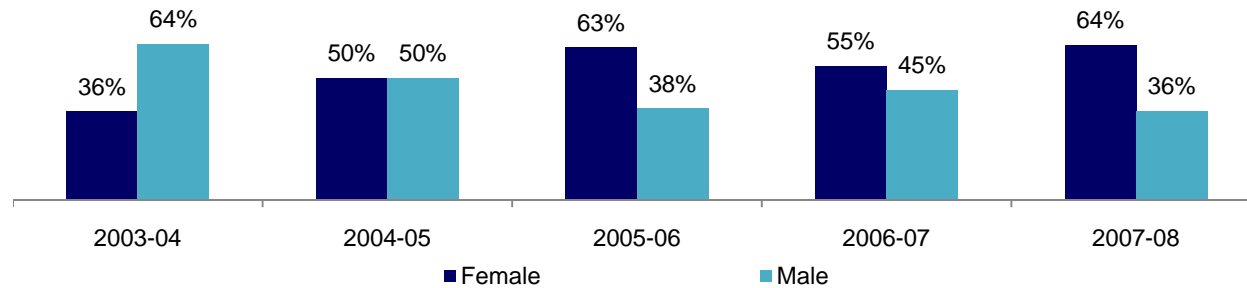


Figure 3.14.2: District Colleges Annual Certificates 60 or More Units by Gender



SDCCD Section III: Student Outcomes (Annual Awards Conferred)

Figure 3.14.3: District Colleges Annual Certificates 30 to Less than 59 Units by Gender

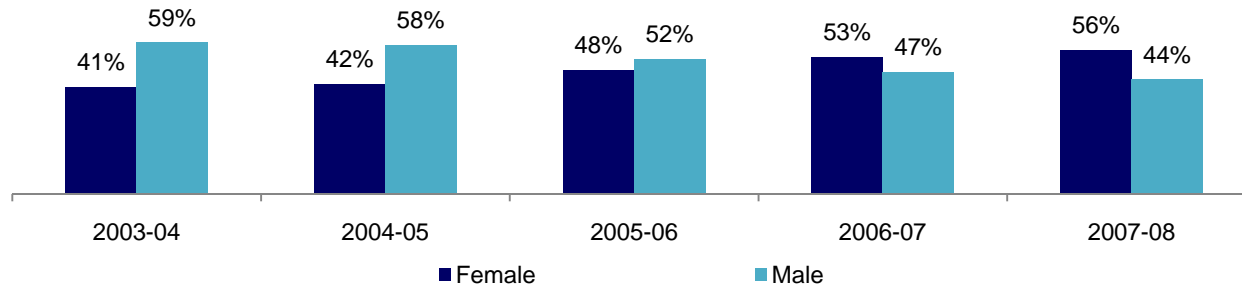
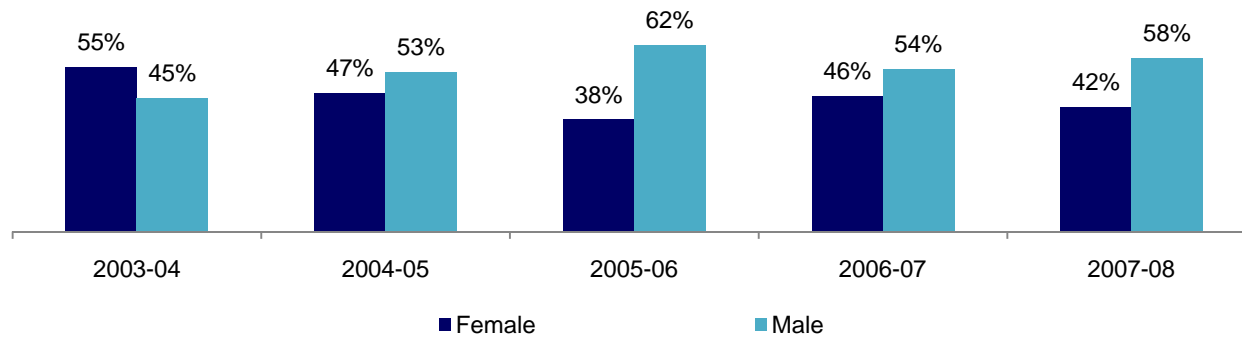


Figure 3.14.4: District Colleges Annual Mini-Certificates 18 or Fewer Units by Gender



SDCCD Section III: Student Outcomes (Annual Awards Conferred)

Table 3.14: District Colleges Annual Awards Conferred by Gender

		2003-04		2004-05		2005-06		2006-07		2007-08		% Change Fall 03 and 07	All Colleges Average Fall 03-07
		#	%	#	%	#	%	#	%	#	%		
AA/AS Degree	Female	1,422	58%	1,329	57%	1,341	56%	1,275	58%	1,155	57%	-19%	57%
	Male	1,023	42%	1,008	43%	1,068	44%	932	42%	871	43%	-15%	43%
	Total	2,445	100%	2,337	100%	2,409	100%	2,207	100%	2,026	100%	-17%	100%
Certificate 60 or More Units	Female	17	36%	5	50%	10	63%	17	55%	14	64%	-18%	50%
	Male	30	64%	5	50%	6	38%	14	45%	8	36%	-73%	50%
	Total	47	100%	10	100%	16	100%	31	100%	22	100%	-53%	100%
Certificate 30 to Less than 59 Units	Female	196	41%	257	42%	220	48%	208	53%	217	56%	11%	47%
	Male	277	59%	348	58%	240	52%	185	47%	172	44%	-38%	53%
	Total	473	100%	605	100%	460	100%	393	100%	389	100%	-18%	100%
Mini-Certificate 18 or Fewer Units	Female	310	55%	287	47%	250	38%	279	46%	242	42%	-22%	45%
	Male	252	45%	330	53%	415	62%	333	54%	338	58%	34%	55%
	Total	562	100%	617	100%	665	100%	612	100%	580	100%	3%	100%

Source: SDCCD Information System

SDCCD Section III: Student Outcomes (Annual Awards Conferred)

Annual Awards Conferred by Ethnicity: The number of associate degrees conferred within all colleges in the district increased for African American and Latino students (1% and 9%, respectively) between 2003/04 to 2007/08. From 2003/04 to 2007/08, White students received the most awards, followed by Latino students, and then Asian/Pacific Islander students across all award categories. These trends reflect the fact that these three ethnicities (White, Latino and Asian/Pacific Islanders students) constitute the greatest proportions of the districtwide student headcount population.

Figure 3.15.1: District Colleges Annual AA/AS Degrees by Ethnicity

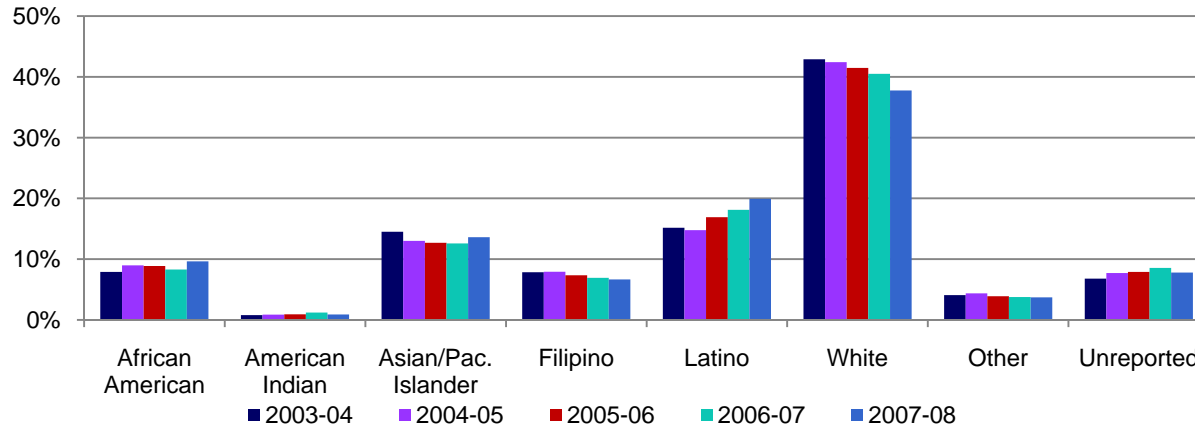
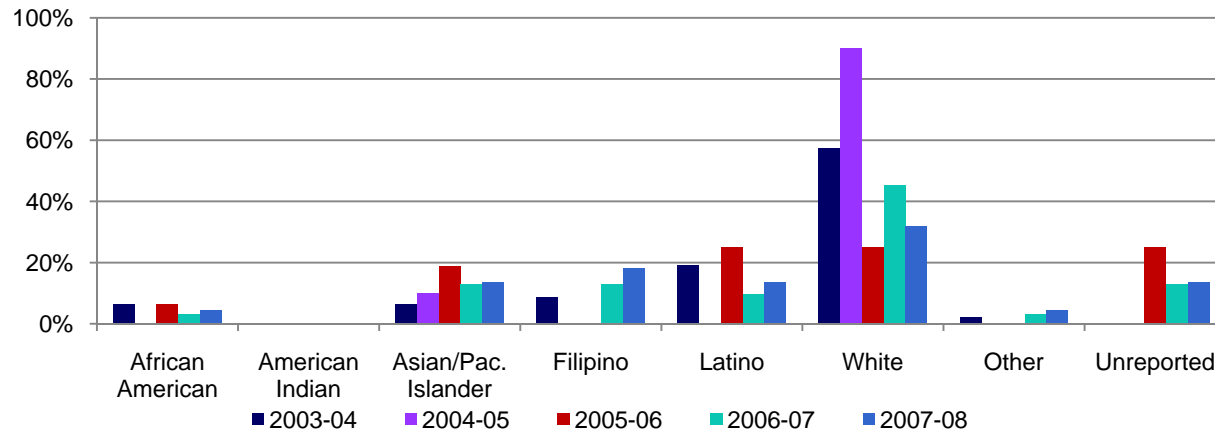


Figure 3.15.2: District Colleges Annual Certificates 60 or More Units by Ethnicity



SDCCD Section III: Student Outcomes (Annual Awards Conferred)

Figure 3.15.3: District Colleges Annual Certificates 30 to Less than 59 Units by Ethnicity

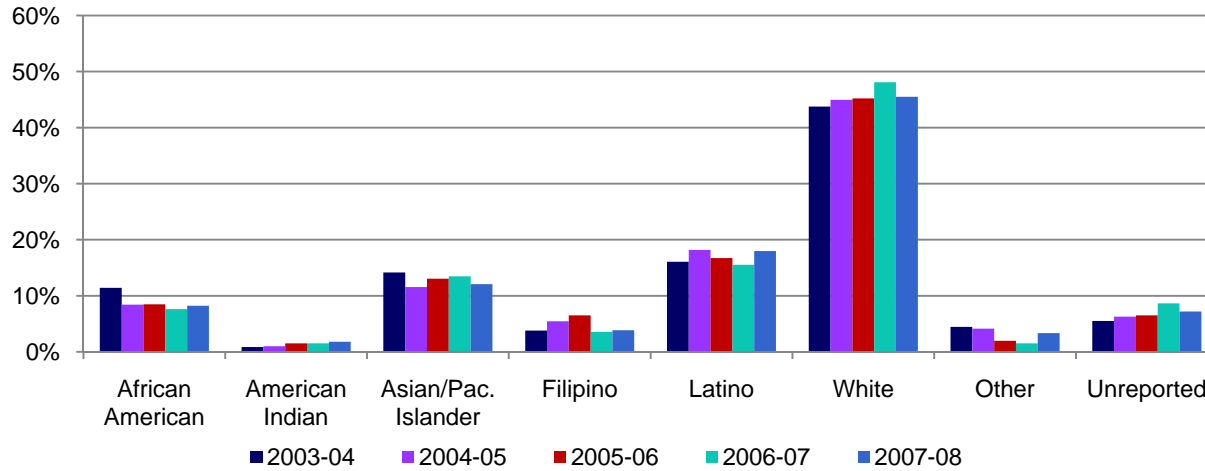
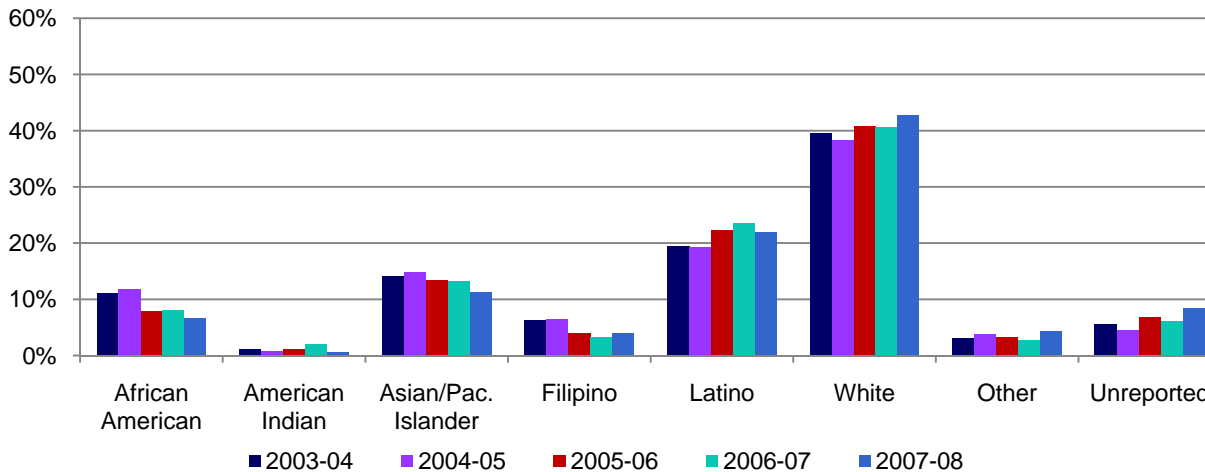


Figure 3.15.4: District Colleges Annual Mini-Certificates 18 or Fewer Units by Ethnicity



SDCCD Section III: Student Outcomes (Annual Awards Conferred)

Table 3.15.1: District Colleges Annual Awards Conferred by Ethnicity

		2003-04		2004-05		2005-06		2006-07		2007-08		% Change Fall 03 and 07	All Colleges Average Fall 03-07
		#	%	#	%	#	%	#	%	#	%		
AA/AS Degree	African American	193	8%	210	9%	214	9%	183	8%	195	10%	1%	9%
	American Indian	19	1%	20	1%	22	1%	27	1%	18	1%	-5%	1%
	Asian/Pac. Islander	355	15%	304	13%	306	13%	278	13%	276	14%	-22%	13%
	Filipino	192	8%	185	8%	177	7%	153	7%	135	7%	-30%	7%
	Latino	371	15%	345	15%	407	17%	400	18%	404	20%	9%	17%
	White	1,049	43%	991	42%	999	41%	894	41%	765	38%	-27%	41%
	Other	100	4%	102	4%	94	4%	83	4%	75	4%	-25%	4%
	Unreported	166	7%	180	8%	190	8%	189	9%	158	8%	-5%	8%
	Total	2,445	100%	2,337	100%	2,409	100%	2,207	100%	2,026	100%	-17%	100%
Certificate 60 or More Units	African American	3	6%	0	0%	1	6%	1	3%	1	5%	-67%	5%
	American Indian	0	0%	0	0%	0	0%	0	0%	0	0%	--	0%
	Asian/Pac. Islander	3	6%	1	10%	3	19%	4	13%	3	14%	0%	11%
	Filipino	4	9%	0	0%	0	0%	4	13%	4	18%	0%	10%
	Latino	9	19%	0	0%	4	25%	3	10%	3	14%	-67%	15%
	White	27	57%	9	90%	4	25%	14	45%	7	32%	-74%	48%
	Other	1	2%	0	0%	0	0%	1	3%	1	5%	0%	2%
	Unreported	0	0%	0	0%	4	25%	4	13%	3	14%	--	9%
	Total	47	100%	10	100%	16	100%	31	100%	22	100%	-53%	100%

Source: SDCCD Information System

SDCCD Section III: Student Outcomes (Annual Awards Conferred)

Table 3.15.2: District Colleges Annual Awards Conferred by Ethnicity

		2003-04		2004-05		2005-06		2006-07		2007-08		% Change Fall 03 and 07	All Colleges Average Fall 03-07
		#	%	#	%	#	%	#	%	#	%		
Certificate 30 to Less than 59 Units	African American	54	11%	51	8%	39	8%	30	8%	32	8%	-41%	9%
	American Indian	4	1%	6	1%	7	2%	6	2%	7	2%	75%	1%
	Asian/Pac. Islander	67	14%	70	12%	60	13%	53	13%	47	12%	-30%	13%
	Filipino	18	4%	33	5%	30	7%	14	4%	15	4%	-17%	5%
	Latino	76	16%	110	18%	77	17%	61	16%	70	18%	-8%	17%
	White	207	44%	272	45%	208	45%	189	48%	177	46%	-14%	45%
	Other	21	4%	25	4%	9	2%	6	2%	13	3%	-38%	3%
	Unreported	26	5%	38	6%	30	7%	34	9%	28	7%	8%	7%
	Total	473	100%	605	100%	460	100%	393	100%	389	100%	-18%	100%
Mini-Certificate 18 or Fewer Units	African American	62	11%	73	12%	53	8%	50	8%	39	7%	-37%	9%
	American Indian	6	1%	5	1%	8	1%	13	2%	3	1%	-50%	1%
	Asian/Pac. Islander	79	14%	92	15%	89	13%	81	13%	66	11%	-16%	13%
	Filipino	35	6%	40	6%	27	4%	20	3%	23	4%	-34%	5%
	Latino	109	19%	119	19%	148	22%	144	24%	127	22%	17%	21%
	White	222	40%	236	38%	272	41%	249	41%	248	43%	12%	40%
	Other	17	3%	24	4%	22	3%	17	3%	25	4%	47%	3%
	Unreported	32	6%	28	5%	46	7%	38	6%	49	8%	53%	6%
	Total	562	100%	617	100%	665	100%	612	100%	580	100%	3%	100%

Source: SDCCD Information System

SDCCD Section III: Student Outcomes (Annual Awards Conferred)

Annual Awards Conferred by Age: On average, students between ages 30 and 39 years old consistently displayed a general trend of receiving the highest amount of awards within each category across most of the award categories with the exception of associate degrees. Between 2003/04 and 2007/08, students between ages 18 and 24 years old received the highest number of associate degrees (40%) on average. All the age cohorts displayed an overall downward trend of receiving associate degrees.

Figure 3.16.1: District Colleges Annual AA/AS Degrees by Age

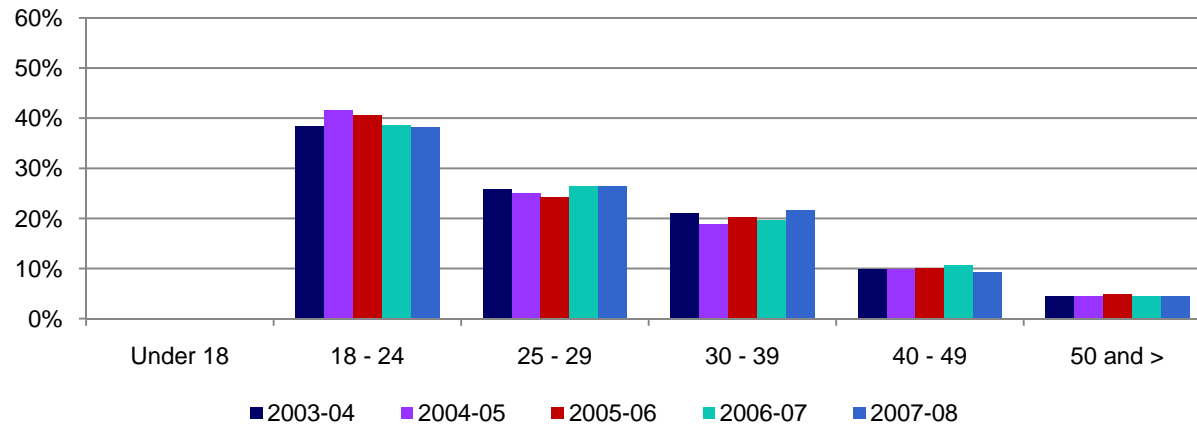
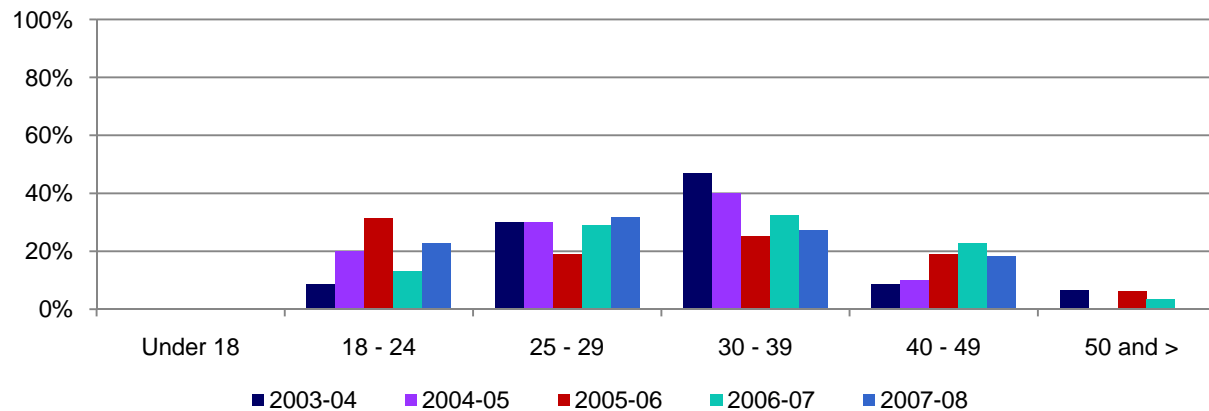


Figure 3.16.2: District Colleges Annual Certificates 60 or More Units by Age



SDCCD Section III: Student Outcomes (Annual Awards Conferred)

Figure 3.16.3: District Colleges Annual Certificates 30 to Less than 59 Units by Age

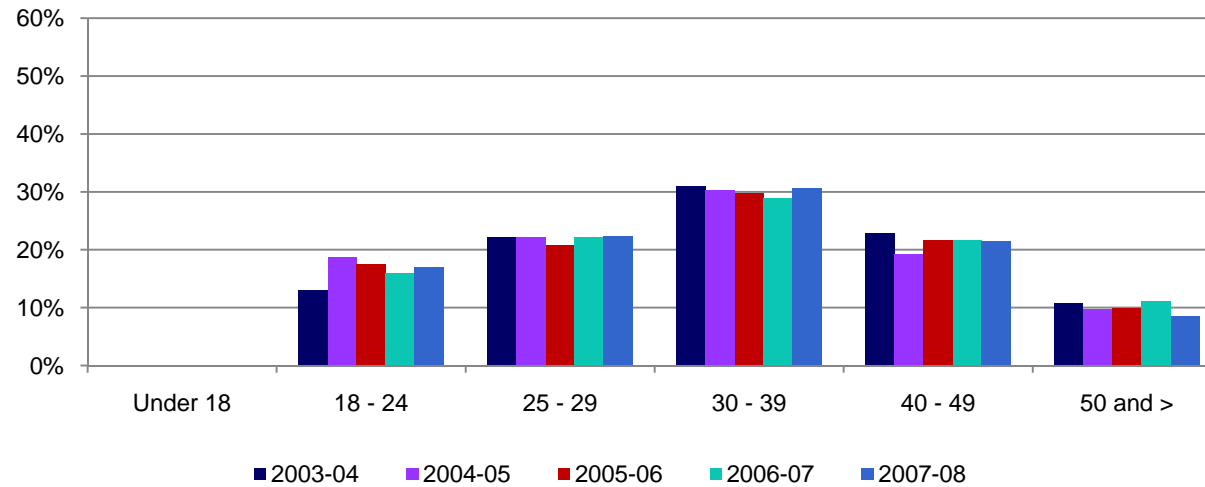
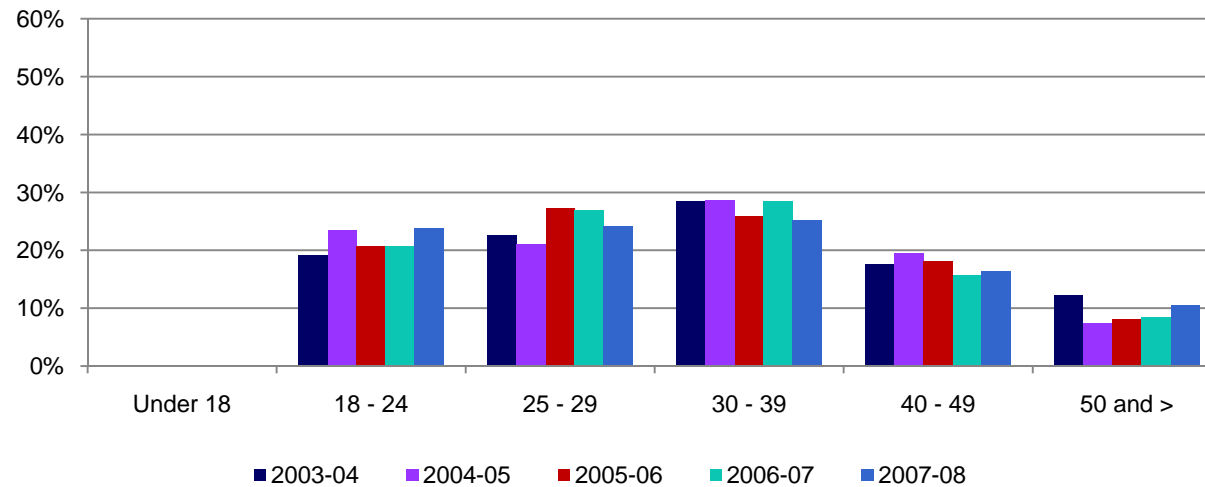


Figure 3.16.4: District Colleges Annual Mini-Certificates 18 or Fewer Units by Age



SDCCD Section III: Student Outcomes (Annual Awards Conferred)

Table 3.16.1: District Colleges Annual Awards Conferred by Age

		2003-04		2004-05		2005-06		2006-07		2007-08		% Change Fall 03 and 07	All Colleges Average Fall 03-07
		#	%	#	%	#	%	#	%	#	%		
AA/AS Degree	Under 18	0	0%	1	0%	0	0%	1	0%	0	0%	--	0%
	18 - 24	942	39%	971	42%	978	41%	854	39%	773	38%	-18%	40%
	25 - 29	633	26%	587	25%	586	24%	586	27%	536	26%	-15%	26%
	30 - 39	516	21%	441	19%	486	20%	434	20%	439	22%	-15%	20%
	40 - 49	242	10%	233	10%	241	10%	235	11%	187	9%	-23%	10%
	50 and >	111	5%	104	4%	118	5%	97	4%	91	4%	-18%	5%
	Unreported	1	0%	0	0%	0	0%	0	0%	0	0%	-100%	0%
	Total	2,445	100%	2,337	100%	2,409	100%	2,207	100%	2,026	100%	-17%	100%
Certificate 60 or More Units	Under 18	0	0%	0	0%	0	0%	0	0%	0	0%	--	0%
	18 - 24	4	9%	2	20%	5	31%	4	13%	5	23%	25%	16%
	25 - 29	14	30%	3	30%	3	19%	9	29%	7	32%	-50%	29%
	30 - 39	22	47%	4	40%	4	25%	10	32%	6	27%	-73%	37%
	40 - 49	4	9%	1	10%	3	19%	7	23%	4	18%	0%	15%
	50 and >	3	6%	0	0%	1	6%	1	3%	0	0%	-100%	4%
	Unreported	0	0%	0	0%	0	0%	0	0%	0	0%	--	0%
	Total	47	100%	10	100%	16	100%	31	100%	22	100%	-53%	100%

Source: SDCCD Information System

SDCCD Section III: Student Outcomes (Annual Awards Conferred)

Table 3.16.2: District Colleges Annual Awards Conferred by Age

		2003-04		2004-05		2005-06		2006-07		2007-08		% Change Fall 03 and 07	All Colleges Average Fall 03-07
		#	%	#	%	#	%	#	%	#	%		
Certificate 30 to Less than 59 Units	Under 18	0	0%	0	0%	0	0%	0	0%	0	0%	--	0%
	18 - 24	62	13%	113	19%	81	18%	63	16%	66	17%	6%	17%
	25 - 29	105	22%	134	22%	96	21%	87	22%	87	22%	-17%	22%
	30 - 39	147	31%	183	30%	137	30%	114	29%	119	31%	-19%	30%
	40 - 49	108	23%	116	19%	100	22%	85	22%	84	22%	-22%	21%
	50 and >	51	11%	59	10%	46	10%	44	11%	33	8%	-35%	10%
	Unreported	0	0%	0	0%	0	0%	0	0%	0	0%	--	0%
	Total	473	100%	605	100%	460	100%	393	100%	389	100%	-18%	100%
Mini-Certificate 18 or Fewer Units	Under 18	0	0%	0	0%	0	0%	0	0%	0	0%	--	0%
	18 - 24	107	19%	145	24%	138	21%	126	21%	138	24%	29%	22%
	25 - 29	127	23%	130	21%	181	27%	165	27%	140	24%	10%	24%
	30 - 39	160	28%	177	29%	172	26%	174	28%	146	25%	-9%	27%
	40 - 49	99	18%	120	19%	120	18%	96	16%	95	16%	-4%	17%
	50 and >	69	12%	45	7%	54	8%	51	8%	61	11%	-12%	9%
	Unreported	0	0%	0	0%	0	0%	0	0%	0	0%	--	0%
	Total	562	100%	617	100%	665	100%	612	100%	580	100%	3%	100%

Source: SDCCD Information System

SDCCD Section III: Student Outcomes (Annual Transfers)

Annual Transfers: The annual transfer volume for all colleges in the district increased 39%, from 10,252 in 2003/04 to 14,232 in 2007/08.

Figure 3.17: District Colleges Annual Transfers

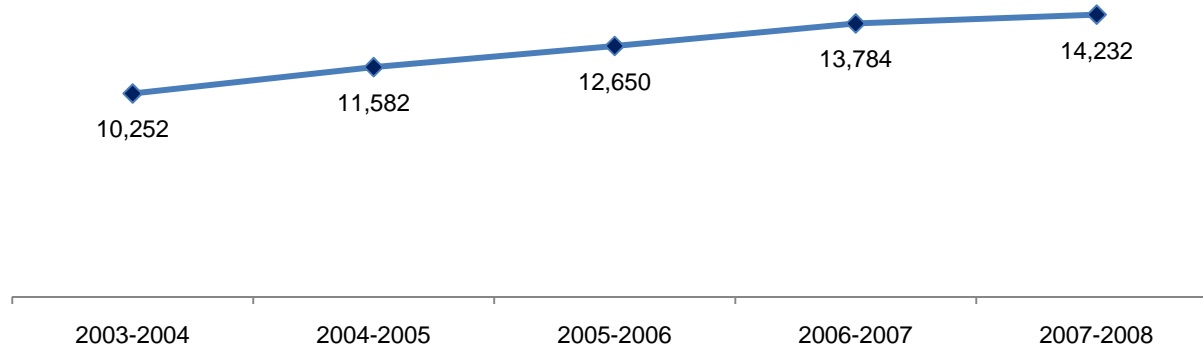


Table 3.17: District Colleges Annual Transfers

	2003-2004	2004-2005	2005-2006	2006-2007	2007-2008	% Change 2003-04 and 2007-08
Total	10,252	11,582	12,650	13,784	14,232	39%

Source: SDCCD Information System

SDCCD Section III: Student Outcomes (Annual Transfers)

Annual Transfers by Gender: From 2003/04 to 2007/08, female students (57%) had a higher transfer volume, on average, compared to their male student counterpart (43%). The transfer volume for both male and female students increased between 2003/04 and 2007/08 (38% and 39%, respectively).

Figure 3.18: District Colleges Annual Transfers by Gender

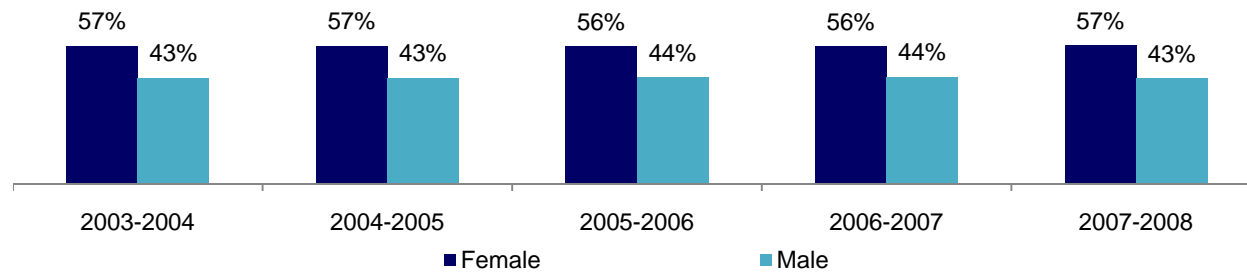


Figure 3.18: District Colleges Annual Transfers by Gender

	2003-2004		2004-2005		2005-2006		2006-2007		2007-2008		% Change 03/04 and 07/08	All Colleges Average 03/04- 07/08
	#	%	#	%	#	%	#	%	#	%		
Female	5,805	57%	6,547	57%	7,128	56%	7,763	56%	8,085	57%	39%	57%
Male	4,439	43%	5,029	43%	5,514	44%	6,017	44%	6,142	43%	38%	43%
Unreported	8	0%	6	0%	8	0%	4	0%	5	0%	-38%	0%
Total	10,252	100%	11,582	100%	12,650	100%	13,784	100%	14,232	100%	39%	100%

Source: SDCCD Information System

SDCCD Section III: Student Outcomes (Annual Transfers)

Annual Transfers by Ethnicity: The ethnic group with the highest transfer volume on average was White students (42%). Latino students (16%) and Asian/Pacific Islander students (15%) had the next highest transfer volume between 2003/04 and 2007/08. All the ethnic groups displayed an increased trend in transfer volume. Latino students increased the most by 75%, from 1,500 in 2003/04 to 2,618 in 2007/08.

Figure 3.19: District Colleges Annual Transfers by Ethnicity

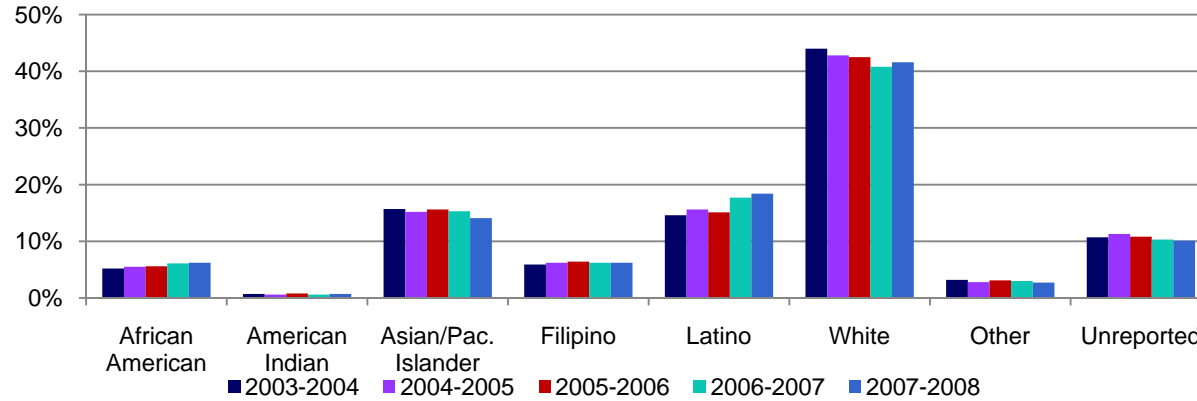


Table 3.19: District Colleges Annual Transfers by Ethnicity

	2003-2004		2004-2005		2005-2006		2006-2007		2007-2008		% Change 03/04 and 07/08	All Colleges Average 03/04- 07/08
	#	%	#	%	#	%	#	%	#	%		
African American	538	5%	636	6%	714	6%	838	6%	884	6%	64%	6%
American Indian	67	1%	70	1%	98	1%	89	1%	94	1%	40%	1%
Asian/Pac. Islander	1,613	16%	1,763	15%	1,978	16%	2,109	15%	2,006	14%	24%	15%
Filipino	602	6%	715	6%	808	6%	858	6%	886	6%	47%	6%
Latino	1,500	15%	1,802	16%	1,913	15%	2,443	18%	2,618	18%	75%	16%
White	4,507	44%	4,957	43%	5,380	43%	5,617	41%	5,924	42%	31%	42%
Other	331	3%	327	3%	392	3%	408	3%	378	3%	14%	3%
Unreported	1,094	11%	1,312	11%	1,367	11%	1,422	10%	1,442	10%	32%	11%
Total	10,252	100%	11,582	100%	12,650	100%	13,784	100%	14,232	100%	39%	100%

Source: SDCCD Information System

SDCCD Section III: Student Outcomes (Annual Transfers)

Annual Transfers by Age: The age cohort with the highest transfer volume on average was students ages 18-24 (69%). Students between ages 25 and 29 years old (18%) and students ages 30 to 39 years old (9%) had the next highest transfer volume between 2003/04 and 2007/08. All of the age cohorts displayed an increased trend in transfer volume with students between ages 30 and 39 years old increasing the most by 61%, from 885 in 2003/04 1,421 in 2007/08.

Figure 3.20: District Colleges Annual Transfers by Age

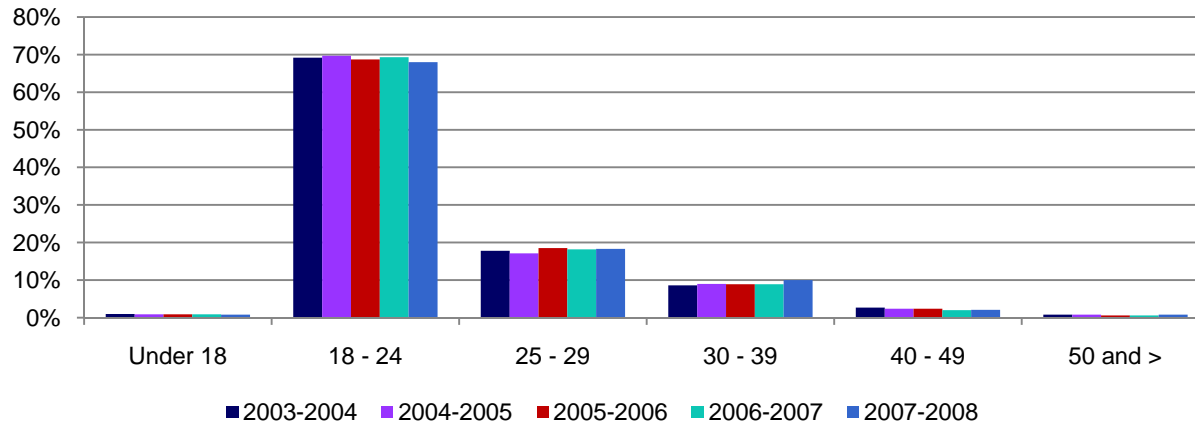


Table 3.20: District Colleges Annual Awards by Age

	2003-2004		2004-2005		2005-2006		2006-2007		2007-2008		% Change 03/04 and 07/08	All Colleges Average 03/04- 07/08
	#	%	#	%	#	%	#	%	#	%		
Under 18	100	1%	100	1%	120	1%	123	1%	117	1%	17%	1%
18 - 24	7,090	69%	8,076	70%	8,689	69%	9,552	69%	9,674	68%	36%	69%
25 - 29	1,820	18%	1,986	17%	2,334	19%	2,513	18%	2,603	18%	43%	18%
30 - 39	885	9%	1,046	9%	1,129	9%	1,230	9%	1,421	10%	61%	9%
40 - 49	273	3%	281	2%	299	2%	277	2%	297	2%	9%	2%
50 and >	84	1%	93	1%	79	1%	89	1%	120	1%	43%	1%
Unreported	0	0%	0	0%	0	0%	0	0%	0	0%	0%	0%
Total	10,252	100%	11,582	100%	12,650	100%	13,784	100%	14,232	100%	39%	100%

Source: SDCCD Information System

SDCCD Section III: Student Outcomes (Annual Transfers)

Annual Transfers by CSU/UC: Of all the students who transferred to a CSU/UC from the district, on average, 66% transferred into the California State University (CSU) system and 35% transferred into the University of California (UC) system. Both the CSU and UC systems saw an increased trend in the number of students that transferred from the district (50% and 6%, respectively) between 2003/04 and 2007/08.

Figure 3.21: District Colleges Annual Transfers by CSU/UC

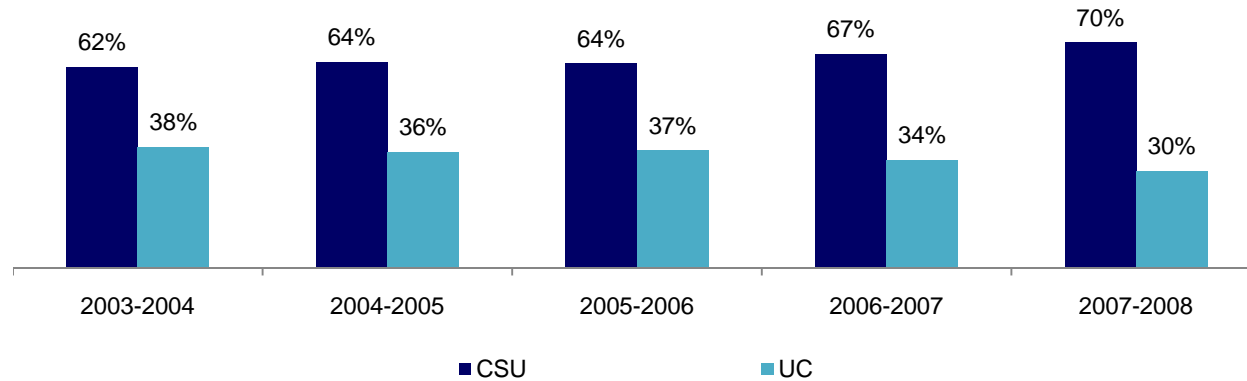


Table 3.21: District Colleges Annual Awards by CSU/UC

	2003-2004		2004-2005		2005-2006		2006-2007		2007-2008		% Change 03/04 and 07/08	All Colleges Average 03/04- 07/08
	#	%	#	%	#	%	#	%	#	%		
CSU	4,232	62%	4,882	64%	5,538	64%	6,091	67%	6,334	70%	50%	66%
UC	2,551	38%	2,751	36%	3,187	37%	3,063	34%	2,714	30%	6%	35%
Total	6,783	100%	7,633	100%	8,725	100%	9,154	100%	9,048	100%	33%	100%

Source: SDCCD Information System

SDCCD Section III: Student Outcomes (Annual Transfers)

Annual Transfers by Institution Type: Of all the students who transferred from the district, on average, 25% transferred to a private institution and 75% transferred to a public institution. Both public and private institutions saw an increased trend in the number of students that transferred from the district (36% and 49%, respectively) to their respective institutions between 2003/04 and 2007/08.

Figure 3.22: District Colleges Annual Transfers by Institution Type

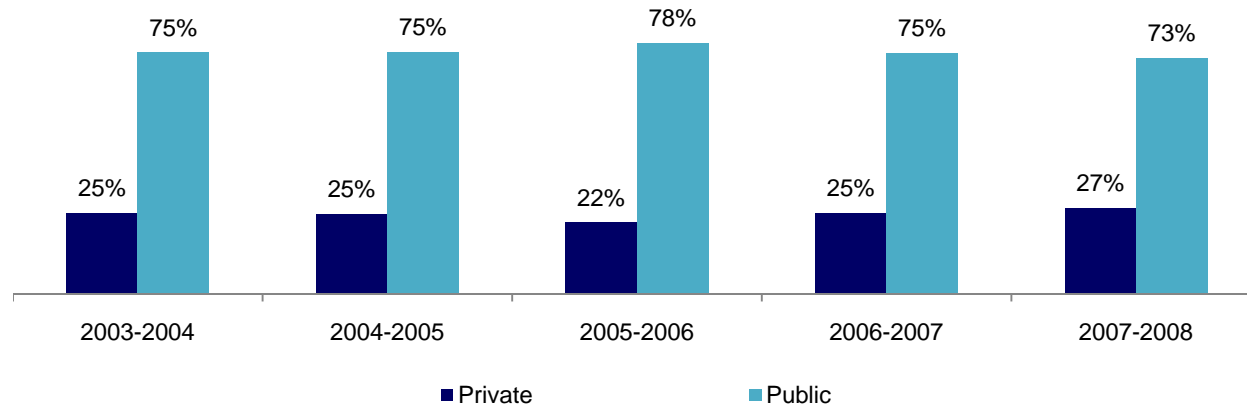


Table 3.22: District Colleges Annual Awards by Institution Type

	2003-2004		2004-2005		2005-2006		2006-2007		2007-2008		% Change 03/04 and 07/08	All Colleges Average 03/04- 07/08
	#	%	#	%	#	%	#	%	#	%		
Private	2,572	25%	2,888	25%	2,812	22%	3,475	25%	3,820	27%	49%	25%
Public	7,680	75%	8,694	75%	9,838	78%	10,309	75%	10,412	73%	36%	75%
Total	10,252	100%	11,582	100%	12,650	100%	13,784	100%	14,232	100%	39%	100%

Source: SDCCD Information System

SDCCD Section III: Student Outcomes (Annual Transfers)

Annual Transfers by Institution Location: Of all the students who transferred from the district, on average, 79% transferred to an In-State institution and 21% transferred to an Out-of-State institution. Both In-State and Out-of-State institutions saw an increased trend in the number of students that transferred from the district (38% and 43%, respectively) to their respective institutions between 2003/04 and 2007/08.

Figure 3.23: District Colleges Annual Transfers by Institution Location

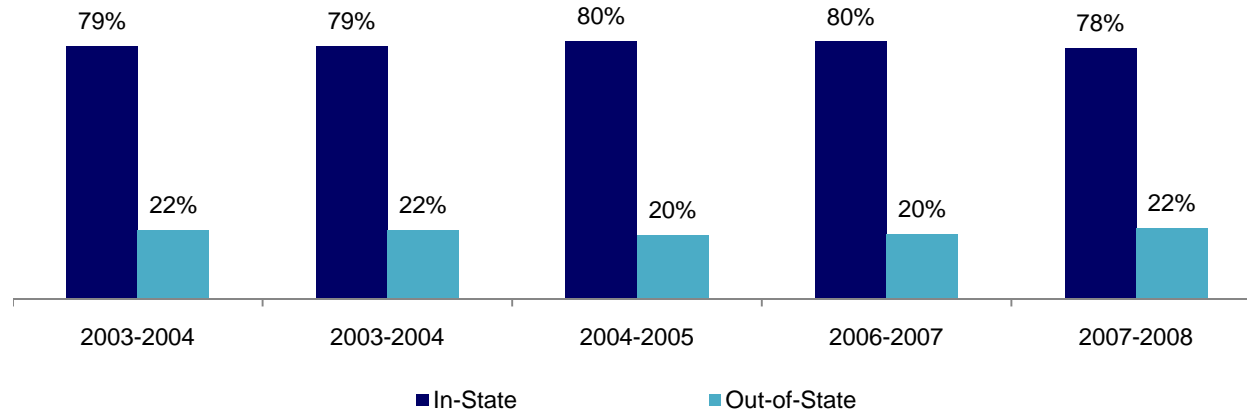


Table 3.23: District Colleges Annual Awards by Institution Location

	2003-2004		2004-2005		2005-2006		2006-2007		2007-2008		% Change 03/04 and 07/08	All Colleges Average 03/04- 07/08
	#	%	#	%	#	%	#	%	#	%		
In-State	8,048	79%	9,087	79%	10,141	80%	11,013	80%	11,086	78%	38%	79%
Out-of-State	2,204	22%	2,495	22%	2,509	20%	2,771	20%	3,146	22%	43%	21%
Total	10,252	100%	11,582	100%	12,650	100%	13,784	100%	14,232	100%	39%	100%

Source: SDCCD Information System

SDCCD Section IV: Productivity and Efficiency

This section of the Fact Book contains information on productivity and efficiency measures. The following describes in detail each of the measures.

- 1) FTES. The first measure reported in this section is a measure of productivity. FTES is a calculation of full-time equivalent students and is based on the total number of student contact hours.
- 2) Enrollments. The second measure in this section of the report is also a measure of productivity. Enrollments are duplicated counts of students. The measure counts all of the classes a single student is enrolled in compared to unduplicated headcount which counts the student only once regardless of the number of classes he/she may be enrolled in.
- 3) Fill Rates. The third measure reported in this section is a measure of efficiency. Fill rates are a calculation of the total enrollment capacity of a class over the total enrollments in the class.

SDCCD Section IV: Productivity and Efficiency

Annual FTES: Between 2003/04 and 2007/08, the District had a 3% increase in FTES. For credit FTES, there was an increase by 7% from 31,158 in 2003/04 to 33,187 in 2007/08. Districtwide non-credit FTES has seen an 8% decrease between 2003/04 to 2007/08.

Figure 4.1: District Colleges Annual FTES

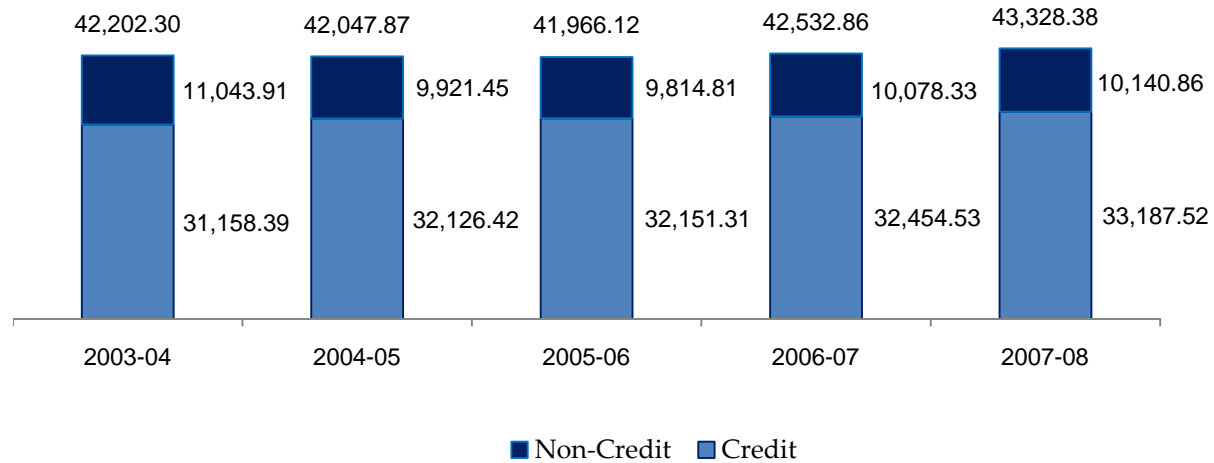


Table 4.1: District Colleges Annual FTES

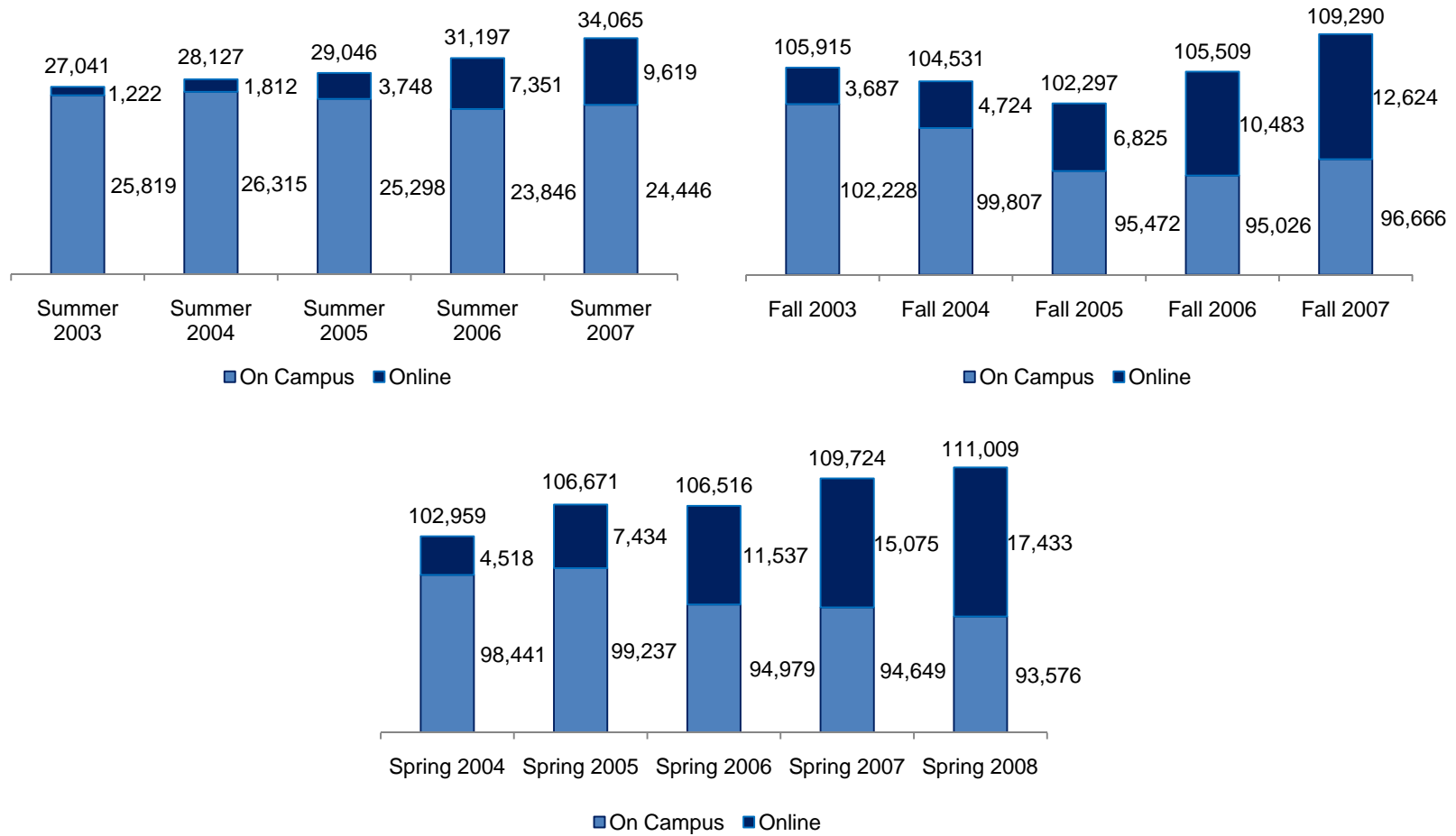
	2003-04	2004-05	2005-06	2006-07	2007-08
Credit	31,158.39	32,126.42	32,151.31	32,454.53	33,187.52
Non-Credit	11,043.91	9,921.45	9,814.81	10,078.33	10,140.86
Total	42,202.30	42,047.87	41,966.12	42,532.86	43,328.38

Source: SDCCD Information System

SDCCD Section IV: Productivity and Efficiency

Enrollments: The enrollment trend for the online mode of instruction increased tremendously for summer (687%), fall (242%) and spring (286%) cohorts between 2003/04 and 2007/08. However, the on campus mode of instruction enrollment trend had consistently decreased for the summer, fall and spring cohorts (5% each) between 2003/04 and 2007/08.

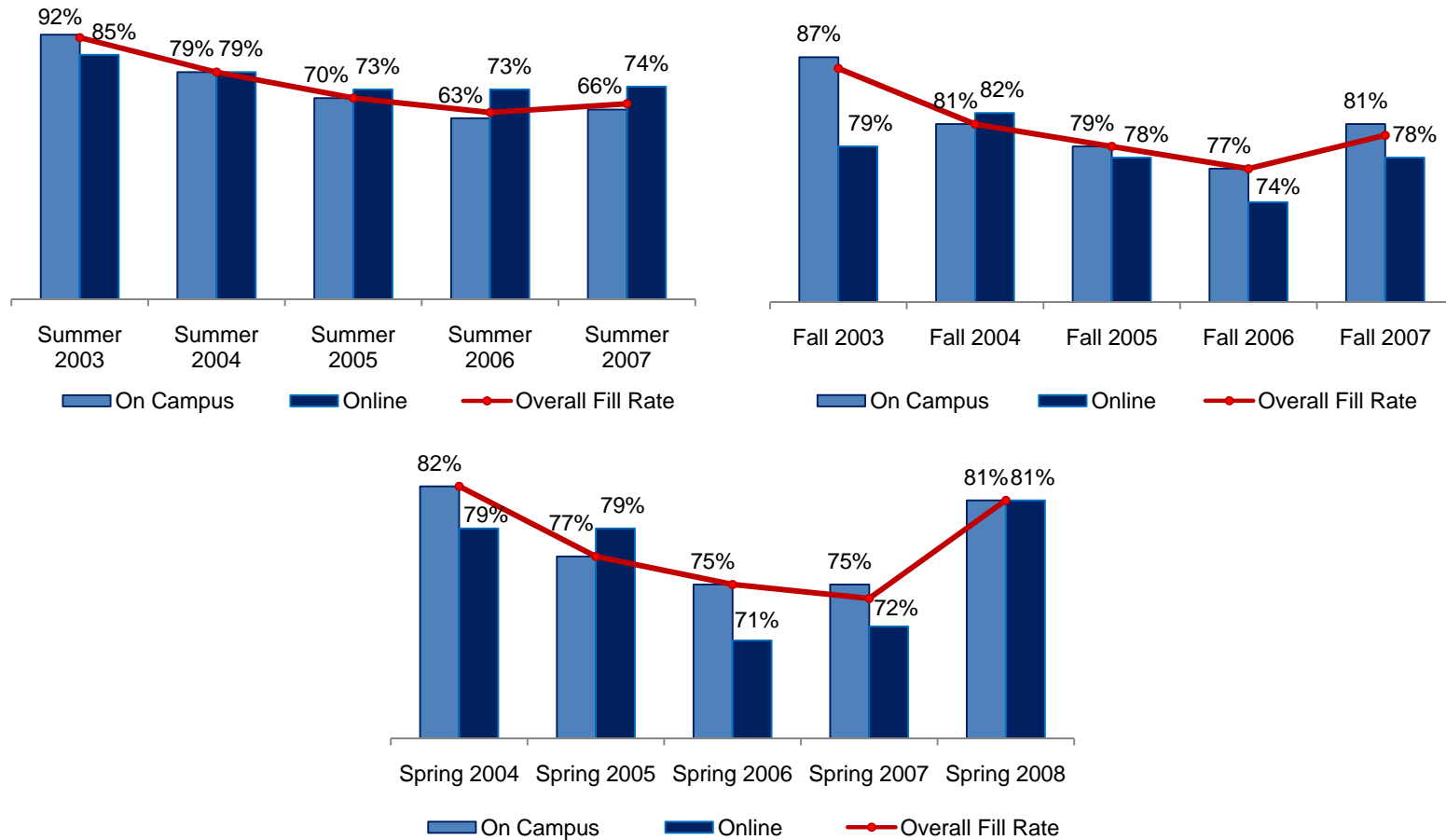
Figure 4.2.1: District Colleges Enrollments



SDCCD Section IV: Productivity and Efficiency

Fill Rates: The average fill rates for all colleges in the district were the highest for the fall cohorts when compared to spring and summer cohorts (81% vs. 76% and 72%, respectively) between 2003/04 and 2007/08. On average, fill rates were the highest for the on campus mode of instruction across summer, fall and spring cohorts (72%, 81%, and 77%) compared to the online mode of instruction (summer 72%, fall 76%, and spring 75% cohorts).

Figure 4.2.2: District Colleges Fill Rate



SDCCD Section IV: Productivity and Efficiency

Table 4.2: District Colleges Enrollments and Fill Rates

Term	On Campus			Online			Total		
	Enrollment	Capacity	Fill Rate	Enrollment	Capacity	Fill Rate	Enrollment	Capacity	Fill Rate
Summer 2003	25,819	27,906	93%	1,222	1,441	85%	27,041	29,347	92%
Summer 2004	26,315	33,079	80%	1,812	2,315	78%	28,127	35,394	79%
Summer 2005	25,298	36,737	69%	3,748	5,107	73%	29,046	41,844	69%
Summer 2006	23,846	38,780	61%	7,351	10,662	69%	31,197	49,442	63%
Summer 2007	24,446	39,088	63%	9,619	13,247	73%	34,065	52,335	65%
Total & Average	125,724	175,590	72%	23,752	32,772	72%	149,476	208,362	72%
Fall 2003	102,228	115,470	89%	3,687	4,702	78%	105,915	120,172	88%
Fall 2004	99,807	121,248	82%	4,724	5,762	82%	104,531	127,010	82%
Fall 2005	95,472	121,721	78%	6,825	8,839	77%	102,297	130,560	78%
Fall 2006	95,026	124,882	76%	10,483	15,105	69%	105,509	139,987	75%
Fall 2007	96,666	121,155	80%	12,624	16,315	77%	109,290	137,470	80%
Total & Average	489,199	604,476	81%	38,343	50,723	76%	527,542	655,199	81%
Spring 2004	98,441	118,875	83%	4,518	5,872	77%	102,959	124,747	83%
Spring 2005	99,237	129,447	77%	7,434	9,437	79%	106,671	138,884	77%
Spring 2006	94,979	129,990	73%	11,537	16,718	69%	106,516	146,708	73%
Spring 2007	94,649	131,418	72%	15,075	21,302	71%	109,724	152,720	72%
Spring 2008	93,576	118,059	79%	17,433	21,561	81%	111,009	139,620	80%
Total & Average	480,882	627,789	77%	55,997	74,890	75%	536,879	702,679	76%

Source: SDCCD Information System

SDCCD Section V: Human Resources

This section of the Fact Book contains information on the number and classification of employees during the Fall 2007 semester. The information is broken down by gender and ethnicity.

SDCCD Section V: Human Resources

Fall 2007 Employees by Ethnicity: There were a total of 4,904 total employees working within the District during Fall 2007. The ethnic breakdown showed that White employees comprised 53% of the total employee population, followed by Latino employees (16%) and Asian employees comprised 11% of the districtwide workforce. Among classified staff, White employees comprised 36% of the employees and made up two-thirds of the teaching faculty positions (66%) compared to other ethnic groups. White employees comprised approximately half (46%) of management positions and supervisory positions (50%). African American employees comprised one-tenth (10%) of the management positions and 16% of the supervisory positions. Latino employees comprised approximately one-tenth (11%) of the supervisory positions and 15% of the management positions.

Figure 5.1: District Colleges Fall 2007 Employees by Ethnicity

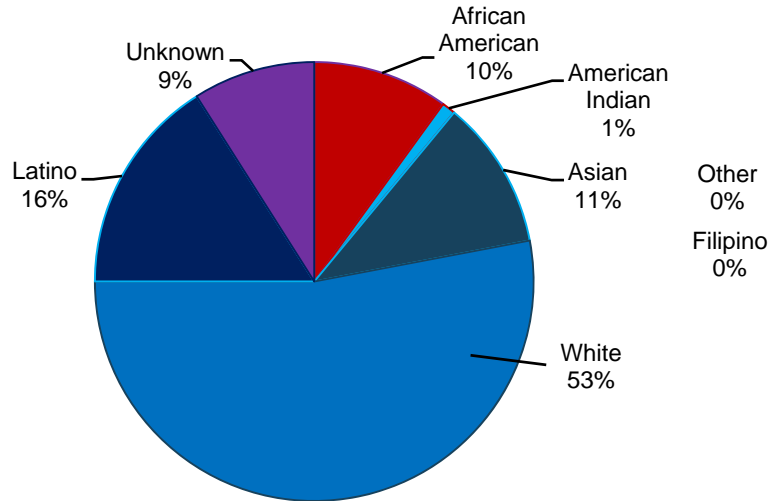
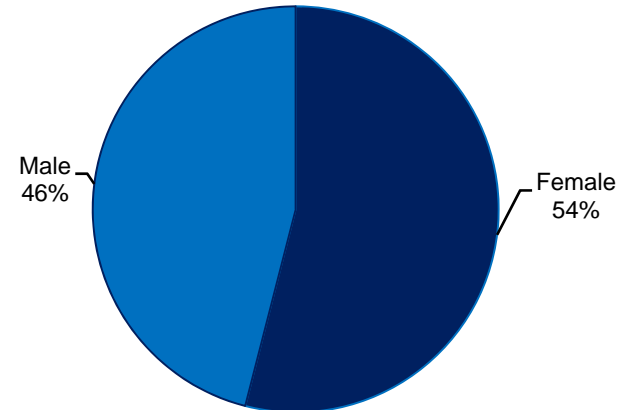


Figure 5.2: District Colleges Fall 2007 Employees by Gender



SDCCD Section V: Human Resources

Table 5.1: District Colleges Fall 2007 Employees by Ethnicity

	African American		American Indian		Asian		White		Latino		Filipino		Other		Unknown		Total
Total Employees	475	10%	24	1%	519	11%	2580	53%	785	16%	56	1%	15	<1%	450	9%	4,904
Male	201	9%	12	1%	231	10%	1221	55%	331	15%	27	1%	7	<1%	213	10%	2243
Female	274	10%	12	1%	288	11%	1359	51%	454	17%	29	1%	8	<1%	237	9%	2661
Classified Staff	116	13%	4	1%	123	14%	313	36%	183	21%	36	4%	6	1%	82	10%	863
Non-Academic Hourly	120	13%	5	1%	184	19%	329	35%	227	24%	1	<1%	2	<1%	84	9%	952
Teaching Faculty	126	5%	11	1%	161	7%	1533	66%	276	12%	2	<1%	3	<1%	204	9%	2316
Contract	42	7%	3	1%	38	7%	350	62%	62	11%	2	<1%	1	<1%	66	12%	564
Adjunct	84	5%	8	1%	123	7%	1183	68%	214	12%	-	-	2	<1%	138	8%	1752
Counseling Faculty	27	17%	2	1%	15	9%	58	36%	37	23%	3	2%	1	1%	18	11%	161
Contract	15	16%	1	1%	7	8%	37	40%	22	24%	2	2%	1	1%	8	9%	93
Adjunct	12	18%	1	2%	8	12%	21	31%	15	22%	1	2%	-	-	10	15%	68
Library Faculty	1	3%	-	-	2	7%	22	71%	1	3%	-	-	-	-	5	16%	31
Contract	-	-	-	-	1	7%	10	67%	1	7%	-	-	-	-	3	20%	15
Adjunct	1	6%	-	-	1	6%	12	75%	-	-	-	-	-	-	2	13%	16
Police Officers	3	12%	-	-	3	12%	14	54%	3	12%	1	4%	-	-	2	8%	26
Community Service Officers	3	18%	-	-	1	6%	7	41%	3	18%	1	6%	1	6%	1	6%	17
Management	9	10%	-	-	3	3%	43	46%	14	15%	1	1%	-	-	25	26%	95
Supervisory Staff	25	16%	-	-	12	8%	80	50%	18	11%	6	4%	-	-	19	12%	160

Source: SDCCD Information System

Table 5.2: District Colleges Employee Overall Gender and Job Status

Gender		Job Status	
Female	54%	Full-Time/Contract	41%
Male	46%	Hourly/Adjunct	59%

Source: SDCCD Information System