

2
0
1
2

Fact Book

Continuing Education



Prepared by:
Office of Institutional Research and Planning
September 2012

Continuing Education Fact Book 2012

Overview.....	1
Section I. Headcount and Student Characteristics	2
Section Overview.....	3
Overall.....	4
By Gender.....	5
By Ethnicity	6
By Age.....	7
By Service Area of Residence.....	8
By Income Level.....	9
By Educational Objective.....	10
By Primary Language	12
By DSPS.....	13
By Day, Evening, and Online Status.....	14
Section II. Annual Awards Conferred	15
Section Overview	16
Overall	17
By Gender.....	18
By Ethnicity.....	20
By Age.....	23
Section III. Productivity.....	26
Section Overview	27
Annual FTES.....	28
Enrollments.....	29
Section IV. Human Resources	31
Section Overview	32
Fall 2011 Employee Breakdown.....	33

Continuing Education Fact Book 2012

OVERVIEW

This Fact Book is a publication of the Office of Institutional Research and Planning for the San Diego Community College District. It is designed to serve the information needs of the community with a primary focus on student enrollment, demographics, and outcomes.

The Fact Book is a rich source of Continuing Education trend information that may be used for planning and decision making. The book contains the following five sections:

- 1) **Headcount and Student Characteristics.** Provides information on student demographic characteristics (e.g., age, ethnicity, and residence by service area) over five years.
- 2) **Awards Conferred.** Provides information about certificates of completion, high school diplomas, and GEDs awarded. All of the information is provided in summary form, as well as demographic characteristics of interest.
- 3) **Productivity.** Provides information on annual FTES and enrollment.
- 4) **Human Resources.** Provides information on the number of employees by ethnicity, gender, and employment type.

Each section contains the following benchmarks: 1) The percentage change over the five year period being reported, 2) The Continuing Education campuswide average and 3) The “Districtwide” averages (includes credit colleges and Continuing Education).

Section I
Headcount and Student Characteristics

Continuing Education Fact Book 2012

This section of the Fact Book contains student headcount by various student characteristics. The headcount figures are based on students who attended classes for one or more hours (all students who have less than one attendance hour or never attended are not included). The headcount information is reported over a period of five years to analyze trends and establish benchmarks.

Headcount information is reported by the following segments:

- 1) Overall
- 2) Gender
- 3) Ethnicity
- 4) Age
- 5) Service Area of Residence
- 6) Income Level
- 7) Educational objective
- 8) Primary Language
- 9) DSPS
- 10) Day, Evening, and Online Status

Continuing Education Fact Book 2012

Overall Headcount: Unduplicated student headcount for Continuing Education showed a 40% decrease, from 26,259 in Summer 2007 to 15,757 in Summer 2011. Unduplicated student headcount for Continuing Education showed a 21% decrease between Fall 2007 and Fall 2011. In particular, the student headcount between Fall 2007 and Fall 2008 remained relatively steady and subsequently decreased the following three fall terms. Finally, unduplicated student headcount for Continuing Education showed a 14% decrease between Spring 2008 and Spring 2012.

Figure 1.1. Continuing Education Overall Headcount (Fall)

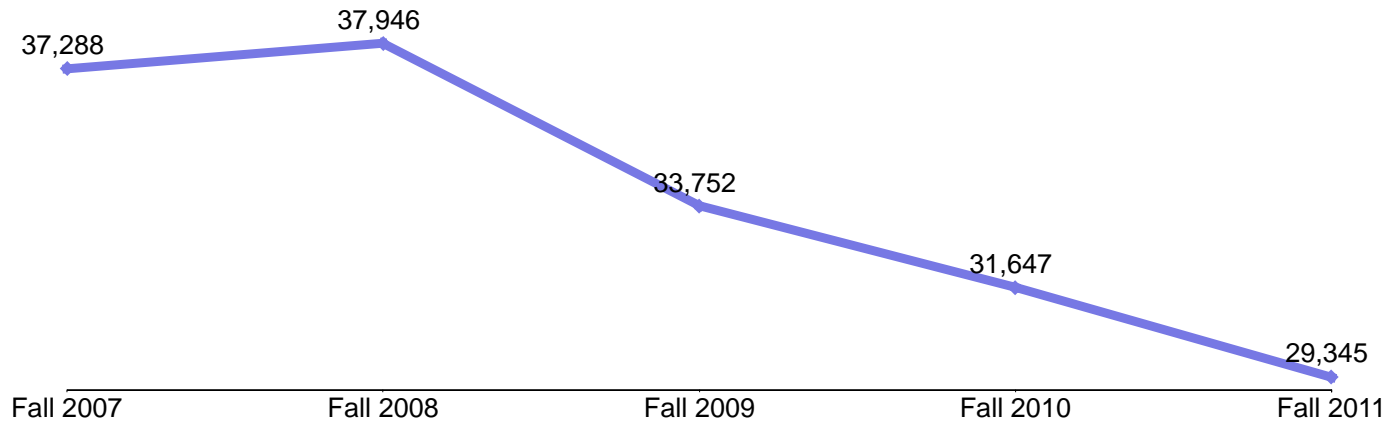


Table 1.1. Continuing Education Overall Headcount (Summer, Fall, and Spring)

	Summer 07	Summer 08	Summer 09	Summer 10	Summer 11	% Change Summer 07-11
Total	26,259	26,333	21,674	19,312	15,757	-40%

	Fall 07	Fall 08	Fall 09	Fall 10	Fall 11	% Change Fall 07-11
Total	37,288	37,946	33,752	31,647	29,345	-21%

	Spring 08	Spring 09	Spring 10	Spring 11	Spring 12	% Change Spring 08-12
Total	38,086	37,497	33,445	32,829	28,988	-14%

Source: SDCCD Information System

Continuing Education Fact Book 2012

Headcount by Gender: On average, the female student headcount (61%) was higher than their male student counterpart (36%). Both the female and male student headcounts remained consistent for the most part between Fall 2007 and Fall 2008. However, while male student headcount stayed steady at 37% in Fall 2009 and 36% in Fall 2010 and 2011, female student headcount increased to 63% in Fall 2009, 2010, and 2011. Both the female and male student headcounts decreased 14% and 21%, respectively, between Fall 2007 and Fall 2011.

Figure 1.2. Continuing Education Headcount by Gender

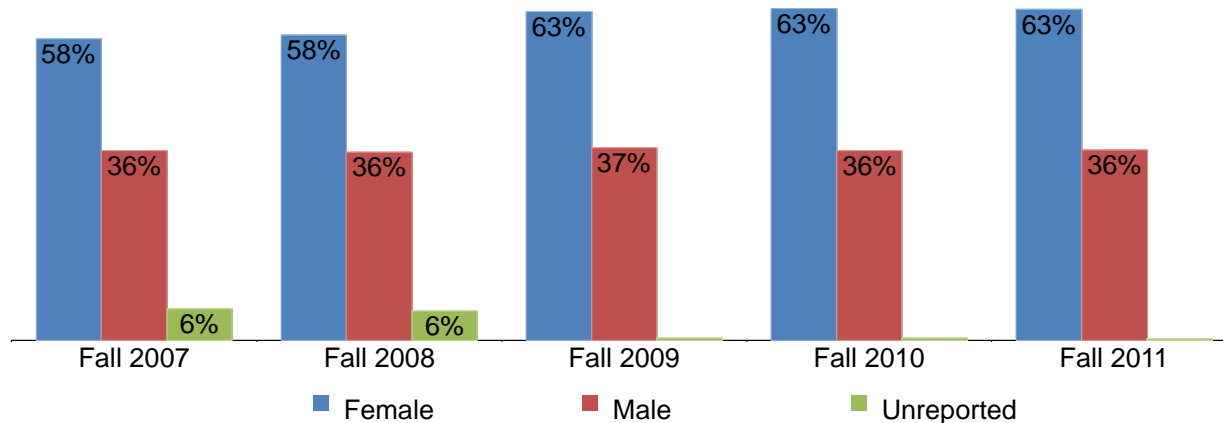


Table 1.2. Continuing Education Headcount by Gender

	Fall 07	Fall 08	Fall 09	Fall 10	Fall 11	% Change Fall 07-11	CE Average Fall 07-11	Districtwide Average Fall 07-11
Female	21,529	22,151	21,205	20,061	18,591	-14%	61%	55%
Male	13,524	13,673	12,417	11,472	10,683	-21%	36%	44%
Unreported	2,235	2,122	130	114	71	-97%	3%	1%
Total	37,288	37,946	33,752	31,647	29,345	-21%	100%	100%

Source: SDCCD Information System

Continuing Education Fact Book 2012

Headcount by Ethnicity: The ethnic groups that comprised the largest headcounts between Fall 2007 and Fall 2011 were White students (34%), Latino students (33%), and Asian/Pacific Islander students (13%) on average. Within Continuing Education, students that were categorized as ‘Other’ ethnicities increased 30% between Fall 2007 and Fall 2011. In contrast, African American students declined 26% between Fall 2007 and Fall 2011. The Latino student headcount within Continuing Education (33%) was overrepresented compared to the districtwide Latino student population headcount (29%).

Figure 1.3. Continuing Education Headcount by Ethnicity

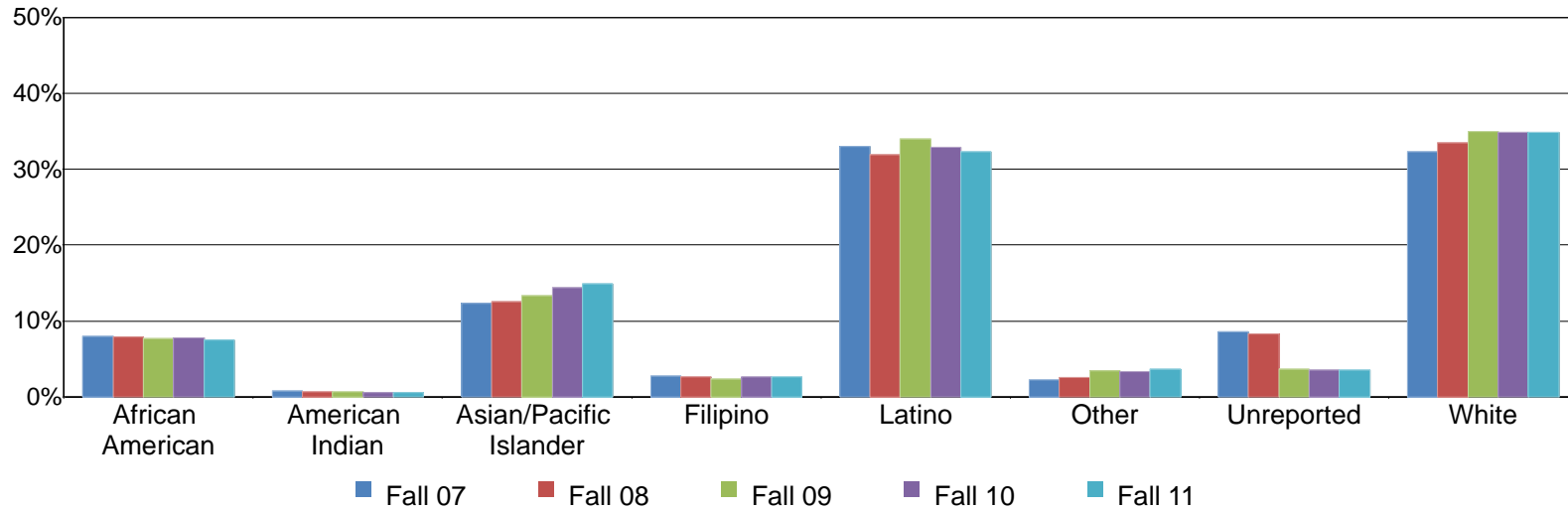


Table 1.3. Continuing Education Headcount by Ethnicity

	Fall 07		Fall 08		Fall 09		Fall 10		Fall 11		% Change Fall 07-11	CE Average Fall 07-11	Districtwide Average Fall 07-11
African American	2,985	8%	3,009	8%	2,583	8%	2,474	8%	2,203	8%	-26%	8%	8%
American Indian	291	1%	258	1%	213	1%	178	1%	184	1%	-37%	1%	1%
Asian/Pacific Islander	4,603	12%	4,770	13%	4,490	13%	4,556	14%	4,363	15%	-5%	13%	12%
Filipino	1,011	3%	1,004	3%	805	2%	829	3%	773	3%	-24%	3%	4%
Latino	12,312	33%	12,088	32%	11,471	34%	10,417	33%	9,482	32%	-23%	33%	29%
White	12,059	32%	12,715	34%	11,818	35%	11,023	35%	10,220	35%	-15%	34%	35%
Other	826	2%	962	3%	1,146	3%	1,050	3%	1,070	4%	30%	3%	3%
Unreported	3,201	9%	3,140	8%	1,226	4%	1,120	4%	1,050	4%	-67%	6%	7%
Total	37,288	100%	37,946	100%	33,752	100%	31,647	100%	29,345	100%	-21%	100%	100%

Source: SDCCD Information System

Continuing Education Fact Book 2012

Headcount by Age: From Fall 2007 to Fall 2011, the age groups with the largest headcounts within Continuing Education were students age 50 and older (39%) and students between ages 30 and 39 (19%) on average. Between Fall 2007 and Fall 2011, decreases in headcount were displayed across all age groups; however, the decrease occurred at a greater magnitude for younger groups than for older groups (e.g., students under age 18 decreased 64% and students 50 and older decreased 7%). Student headcount for those ages 18 to 24 years old displayed the greatest disparity within Continuing Education when compared to the districtwide student headcount for the same age group (14% & 36%, respectively). However, the headcount for those students age 50 and older (39%) was overrepresented when compared to the districtwide student headcount for the same age group (19%).

Figure 1.4 Continuing Education Headcount by Age

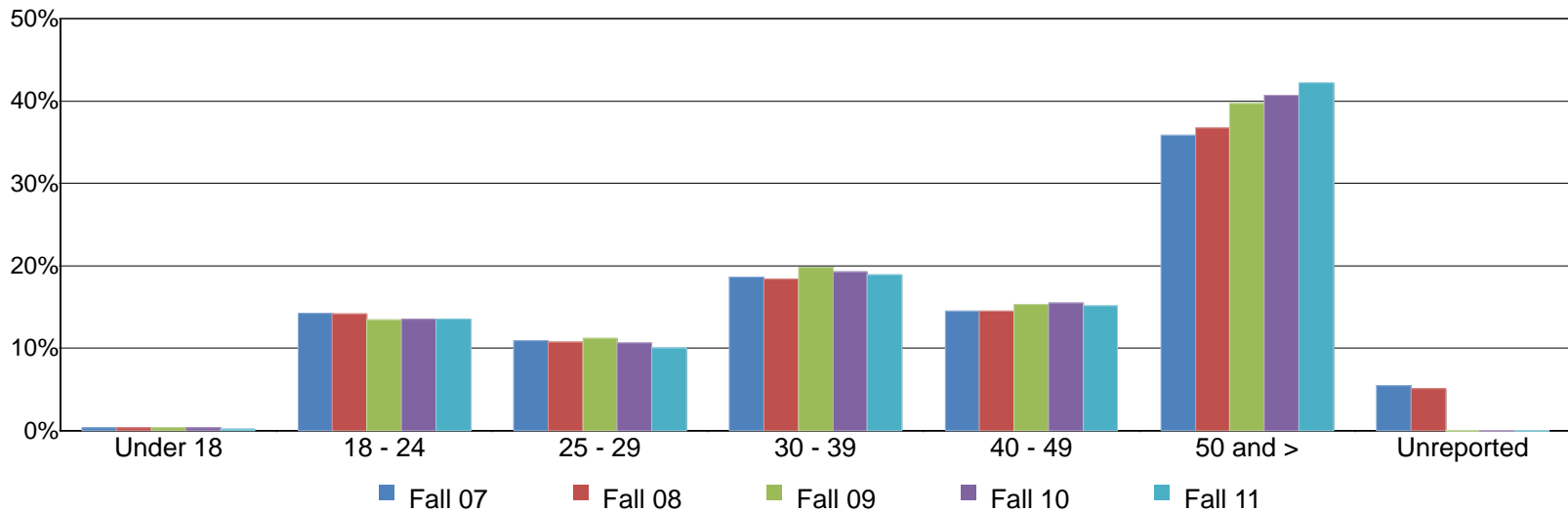


Table 1.4 Continuing Education Headcount by Age

	Fall 07		Fall 08		Fall 09		Fall 10		Fall 11		% Change Fall 07-11	CE Average Fall 07-11	Districtwide Average Fall 07-11
Under 18	148	0%	140	0%	133	0%	114	0%	53	0%	-64%	0%	2%
18 - 24	5,321	14%	5,364	14%	4,545	13%	4,270	13%	3,962	14%	-26%	14%	36%
25 - 29	4,069	11%	4,080	11%	3,778	11%	3,375	11%	2,950	10%	-28%	11%	15%
30 - 39	6,945	19%	6,964	18%	6,697	20%	6,091	19%	5,538	19%	-20%	19%	16%
40 - 49	5,400	14%	5,524	15%	5,175	15%	4,913	16%	4,438	15%	-18%	15%	11%
50 and >	13,359	36%	13,933	37%	13,417	40%	12,881	41%	12,403	42%	-7%	39%	19%
Unreported	2,046	5%	1,941	5%	7	0%	3	0%	1	0%	-100%	2%	1%
Total	37,288	100%	37,946	100%	33,752	100%	31,647	100%	29,345	100%	-21%	100%	100%

Source: SDCCD Information System

Continuing Education Fact Book 2012

Headcount by Service Area of Residence: Between Fall 2007 and Fall 2011, on average, 21% of students within the Continuing Education population resided within the West City service area, 19% of students resided within the Mid-City service area, 16% of students resided within the Centre City service area, 13% of students resided within the North City service area, 6% of students resided within the Cesar Chavez service area, and 5% of students resided within the ECC service area. Seventeen percent of students who attended a Continuing Education site resided outside the Continuing Education service area.

Figure 1.5 Continuing Education Headcount by Service Area of Residence

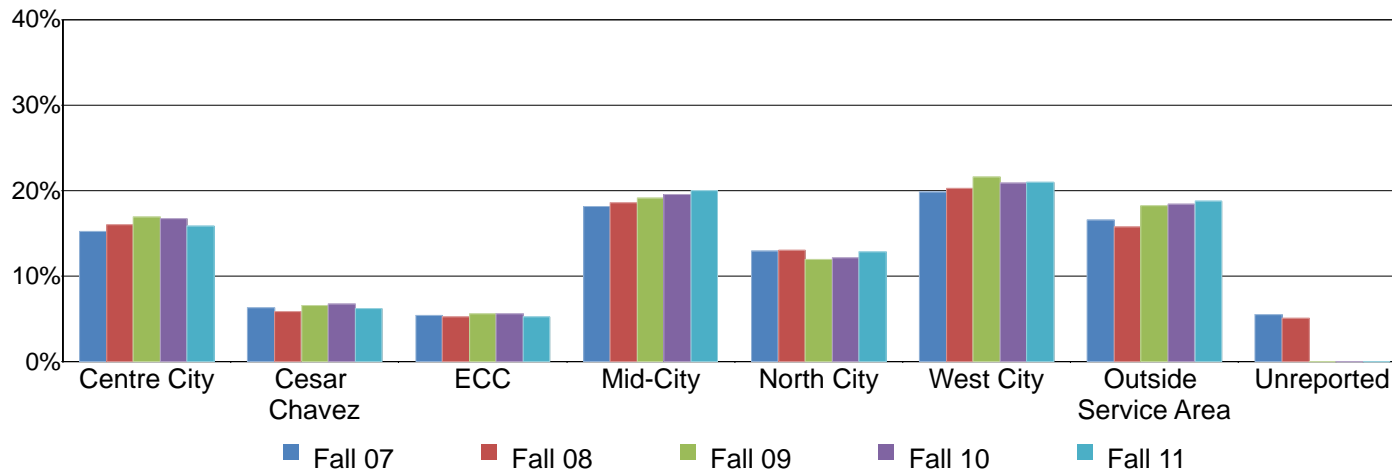


Table 1.5. Continuing Education Headcount by Service Area of Residence

	Fall 07	Fall 08	Fall 09	Fall 10	Fall 11	% Change Fall 07-11	CE Average Fall 07-11
Centre City	5,680 15%	6,101 16%	5,709 17%	5,291 17%	4,664 16%	-18%	16%
Cesar Chavez	2,362 6%	2,238 6%	2,207 7%	2,129 7%	1,818 6%	-23%	6%
ECC	2,028 5%	1,987 5%	1,900 6%	1,760 6%	1,545 5%	-24%	5%
Mid-City	6,782 18%	7,066 19%	6,462 19%	6,196 20%	5,881 20%	-13%	19%
North City	4,832 13%	4,948 13%	4,034 12%	3,831 12%	3,770 13%	-22%	13%
West City	7,387 20%	7,702 20%	7,281 22%	6,613 21%	6,155 21%	-17%	21%
Outside Service Area	6,173 17%	5,968 16%	6,159 18%	5,827 18%	5,512 19%	-11%	17%
Unreported	2,044 5%	1,936 5%	0 0%	0 0%	0 0%	-100%	2%
Total	37,288 100%	37,946 100%	33,752 100%	31,647 100%	29,345 100%	-21%	100%

Source: SDCCD Information System

Continuing Education Fact Book 2012

Headcount by Income Level: Between Fall 2007 and Fall 2011, on average, close to one quarter of students within the Continuing Education student population reported making \$33,000 or more a year (23%) and over one third of students reported making between \$0 and 2,999 (38%). The number of students who reported making between \$0 and 2,999 a year, on average, displayed the greatest disparity within Continuing Education when compared to the districtwide average (38% & 22%, respectively).

Figure 1.6. Continuing Education Headcount by Income Level

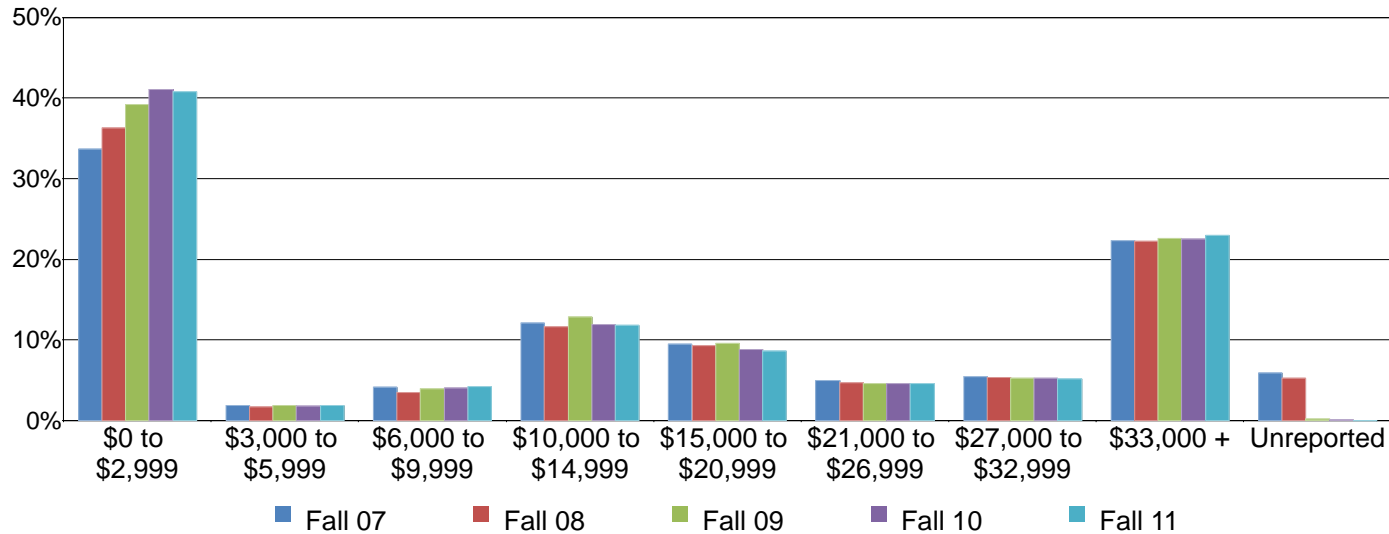


Table 1.6. Continuing Education Headcount by Income Level

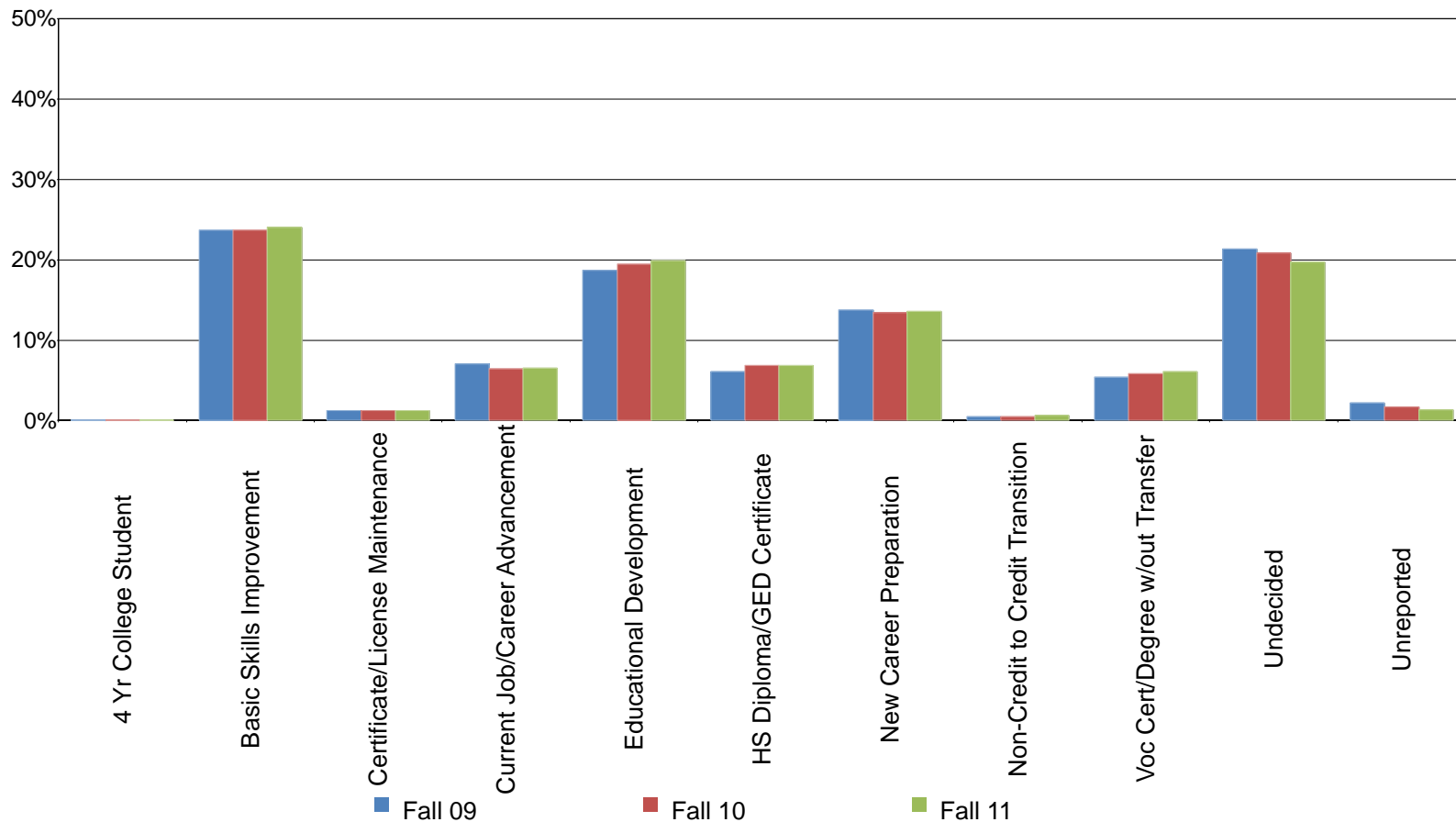
	Fall 07		Fall 08		Fall 09		Fall 10		Fall 11		% Change Fall 07-11	CE Average Fall 07-11	Districtwide Average Fall 07-11
\$0 to \$2,999	12,551	34%	13,777	36%	13,228	39%	12,982	41%	11,974	41%	-5%	38%	22%
\$3,000 to \$5,999	716	2%	640	2%	633	2%	567	2%	541	2%	-24%	2%	3%
\$6,000 to \$9,999	1,552	4%	1,336	4%	1,319	4%	1,273	4%	1,234	4%	-20%	4%	4%
\$10,000 to \$14,999	4,502	12%	4,412	12%	4,337	13%	3,760	12%	3,457	12%	-23%	12%	9%
\$15,000 to \$20,999	3,540	9%	3,531	9%	3,219	10%	2,784	9%	2,521	9%	-29%	9%	9%
\$21,000 to \$26,999	1,849	5%	1,773	5%	1,549	5%	1,460	5%	1,364	5%	-26%	5%	6%
\$27,000 to \$32,999	2,044	5%	2,025	5%	1,769	5%	1,671	5%	1,508	5%	-26%	5%	6%
\$33,000 +	8,329	22%	8,448	22%	7,637	23%	7,108	22%	6,731	23%	-19%	23%	23%
Unreported	2,205	6%	2,004	5%	61	0%	42	0%	15	0%	-99%	3%	18%
Total	37,288	100%	37,946	100%	33,752	100%	31,647	100%	29,345	100%	-21%	100%	100%

Source: SDCCD Information System

Continuing Education Fact Book 2012

Headcount by Educational Objective: Nearly one quarter of the Continuing Education student population (24%) selected basic skills improvement as their educational objective during the three terms being reported. Other frequently cited educational objectives were undecided (21%), educational development (19%), and new career preparation (14%). Between Fall 2009 and Fall 2011, the educational objective that made the most gains in popularity was non-credit to credit transition (increased by 19%).

Figure 1.7. Continuing Education Headcount by Educational Objective



Continuing Education Fact Book 2012

Table 1.7. Continuing Education Headcount by Educational Objective

	Fall 09		Fall 10		Fall 11		% Change Fall 09-11	CE Average Fall 09-11
4 Yr College Student	1	0%	1	0%	0	0%	-100%	0%
Basic Skills Improvement	7,986	24%	7,501	24%	7,058	24%	-12%	24%
Certificate/License Maintenance	434	1%	398	1%	356	1%	-18%	1%
Current Job/Career Advancement	2,381	7%	2,048	6%	1,915	7%	-20%	7%
Educational Development	6,306	19%	6,154	19%	5,841	20%	-7%	19%
HS Diploma/GED Certificate	2,057	6%	2,176	7%	2,013	7%	-2%	7%
New Career Preparation	4,659	14%	4,251	13%	4,000	14%	-14%	14%
Non-Credit to Credit Transition	156	0%	151	0%	186	1%	19%	1%
Voc Cert/Degree w/out Transfer	1,818	5%	1,837	6%	1,795	6%	-1%	6%
Undecided	7,208	21%	6,599	21%	5,794	20%	-20%	21%
Unreported	746	2%	531	2%	387	1%	-48%	2%
Total	33,752	100%	31,647	100%	29,345	100%	-13%	100%

Source: SDCCD Information System

Continuing Education Fact Book 2012

Headcount by Primary Language: On average, 65% of the Continuing Education student population spoke English as their primary language, which was smaller than the average districtwide student population (82%). Between Fall 2009 and Fall 2011, there was a decrease in the number of students who reported speaking English and in the number of students who spoke a language other than English (12% & 15%, respectively).

Figure 1.8. Continuing Education Headcount by Primary Language

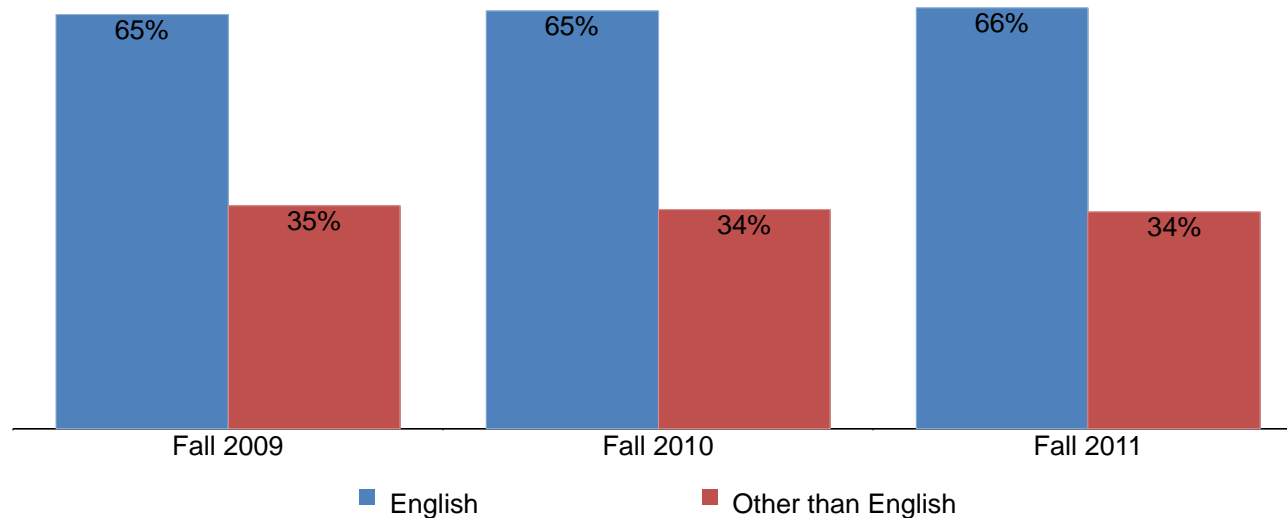


Table 1.8. Continuing Education Headcount by Primary Language

	Fall 09		Fall 10		Fall 11		% Change Fall 09-11	CE Average Fall 09-11	Districtwide Average Fall 09-11
English	21,813	65%	20,644	65%	19,292	66%	-12%	65%	82%
Other than English	11,720	35%	10,835	34%	9,943	34%	-15%	34%	18%
Unreported	219	1%	168	1%	110	0%	-50%	1%	0%
Total	33,752	100%	31,647	100%	29,345	100%	-13%	100%	100%

Source: SDCCD Information System

Continuing Education Fact Book 2012

Headcount by Disability Support Programs and Services (DSPS): Between Fall 2009 and Fall 2011, 4% of the Continuing Education student population received DSPS services on average. This is comparable to the percentage of students served by DSPS within the district. Between Fall 2009 and Fall 2011, there was a greater percentage decrease in the number of students who did not receive DSPS services than students who had received DSPS services (13% & 6%, respectively).

Figure 1.9. Continuing Education Headcount by Disability Support Programs and Services (DSPS)

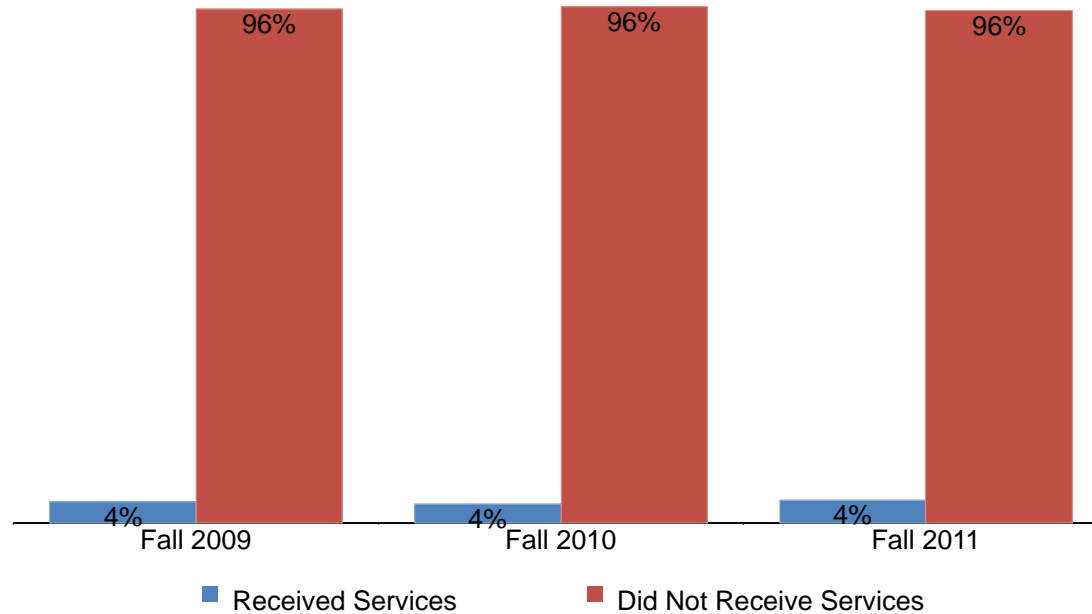


Table 1.9. Continuing Education Headcount by Disability Support Programs and Services (DSPS)

	Fall 09		Fall 10		Fall 11		% Change Fall 09-11	CE Average Fall 09-11	Districtwide Average Fall 09-11
Received Services	1,325	4%	1,150	4%	1,244	4%	-6%	4%	3%
Did Not Receive Services	32,427	96%	30,497	96%	28,101	96%	-13%	96%	97%
Total	33,752	100%	31,647	100%	29,345	100%	-13%	100%	100%

Source: SDCCD Information System

Continuing Education Fact Book 2012

Headcount by Day, Evening, & Online Status: On average, between Fall 2007 and Fall 2011, a majority of the Continuing Education student population attended daytime courses exclusively (68%). Approximately, one quarter of the student population attended evening courses exclusively (24%). Students that take evening courses exclusively decreased 30%, from 9,285 in Fall 2007 to 6,463 in Fall 2011. However, students that take online courses exclusively increased 75%, from 118 in Fall 2007 to 206 in Fall 2011.

Figure 1.10. Continuing Education Headcount by Day, Evening, & Online Status

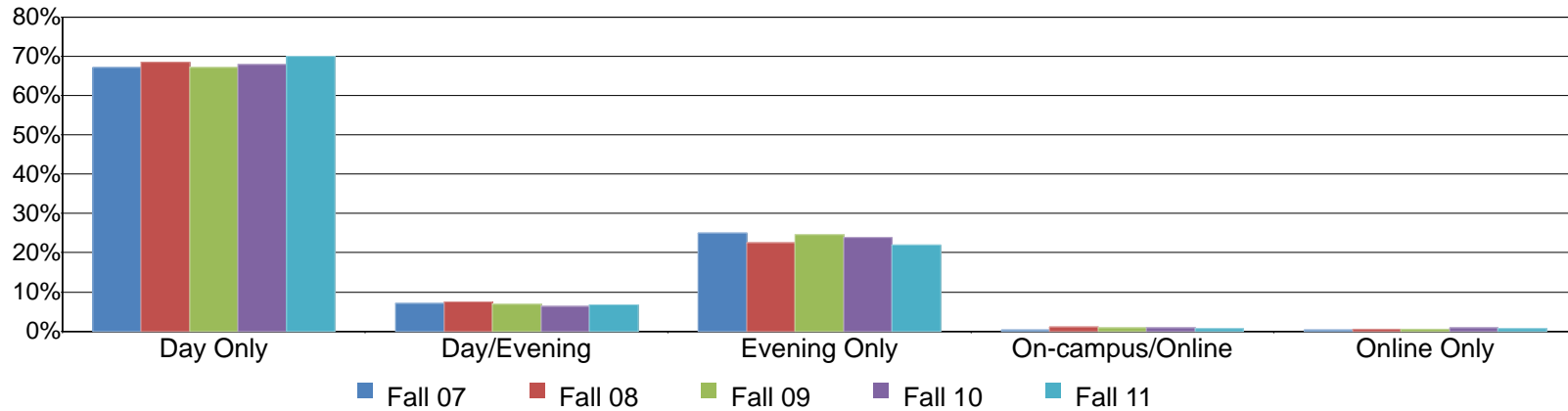


Table 1.10. Continuing Education Headcount by Day, Evening, & Online Status

	Fall 07		Fall 08		Fall 09		Fall 10		Fall 11		% Change Fall 07-11	CE Average Fall 07-11	Districtwide Average Fall 07-11
Day Only	25,051	67%	25,937	68%	22,669	67%	21,505	68%	20,501	70%	-18%	68%	53%
Day/Evening	2,683	7%	2,836	7%	2,343	7%	2,037	6%	1,959	7%	-27%	7%	15%
Evening Only	9,285	25%	8,582	23%	8,277	25%	7,528	24%	6,463	22%	-30%	24%	19%
On-campus/Online	151	0%	397	1%	315	1%	294	1%	216	1%	43%	1%	8%
Online Only	118	0%	194	1%	148	0%	283	1%	206	1%	75%	1%	5%
Total	37,288	100%	37,946	100%	33,752	100%	31,647	100%	29,345	100%	-21%	100%	100%

Source: SDCCD Information System

**Section II
Annual Awards Conferred**

Continuing Education Fact Book 2012

This section of the Fact Book contains information on student annual awards which may be considered an indirect assessment of student learning. For purposes of this report, the annual awards conferred are the total number of certificates, diplomas, and GEDs awarded in a single academic year (summer, fall, and spring). Note that the annual awards conferred that are reported in this Fact Book are considered preliminary data. Please see the upcoming Awards Conferred Supplement report for final annual awards conferred numbers. All of the information in this section is reported by the following segments:

- 1) Overall
- 2) Gender
- 3) Ethnicity
- 4) Age

Continuing Education Fact Book 2012

Annual Awards Conferred: On average, over two thirds of the total awards conferred at Continuing Education were certificates of completion (70%), approximately one fifth of the awards conferred were high school diplomas (19%), and 12% of the awards conferred were GED certificates between 2007/08 and 2011/12. The number of certificates of completion awarded increased 142%, from 581 in 2007/08 to 1,407 in 2011/12.

Figure 2.1. Continuing Education Overall Annual Awards Conferred

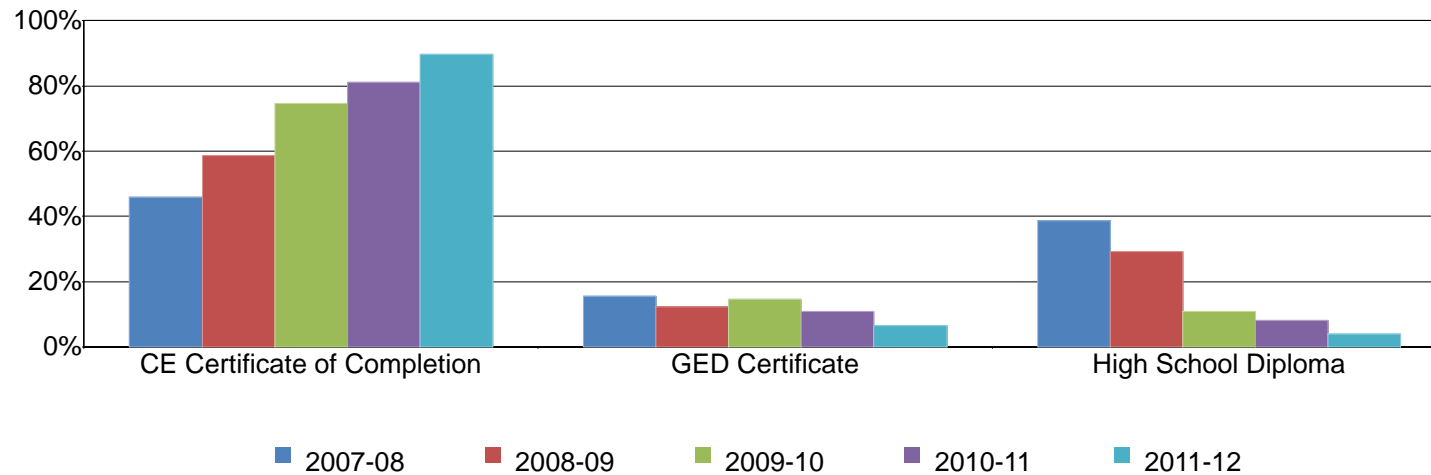


Table 2.1. Continuing Education Overall Annual Awards Conferred

	2007-08		2008-09		2009-10		2010-11		2011-12		% Change 07/08-11/12	CE Average 07/08-11/12
CE Certificate of Completion	581	46%	1,177	58%	942	75%	1,113	81%	1,407	90%	142%	70%
GED Certificate	196	15%	248	12%	184	15%	148	11%	103	7%	-47%	12%
High School Diploma	489	39%	588	29%	137	11%	111	8%	60	4%	-88%	19%
Total	1,266	100%	2,013	100%	1,263	100%	1,372	100%	1,570	100%	24%	100%

Source: SDCCD Information System

Note. In 2009/10, reporting procedures for high school diplomas were revised to correspond with MIS reporting requirements.

Continuing Education Fact Book 2012

Annual Awards Conferred by Gender: Of the total certificates of completion conferred within Continuing Education, male students (54%) received more certificates of completion, on average, than their female student counterpart (46%) between 2007/08 and 2011/12. In regard to the number of GED certificates conferred within Continuing Education, both male and female students received a comparable amount of GED certificates (50% each). On average, male students (52%) received a greater proportion of high school diplomas awarded than their female student counterpart (48%). While both male and female students displayed an increasing trend in the number of certificates of completion awarded (164% & 120%, respectively) between 2007/08 and 2011/12, the number of GED certificates awarded to both males and females decreased (50% & 45%, respectively) during the same reporting period.

Figure 2.2.1. Continuing Education Annual Certificates of Completion by Gender

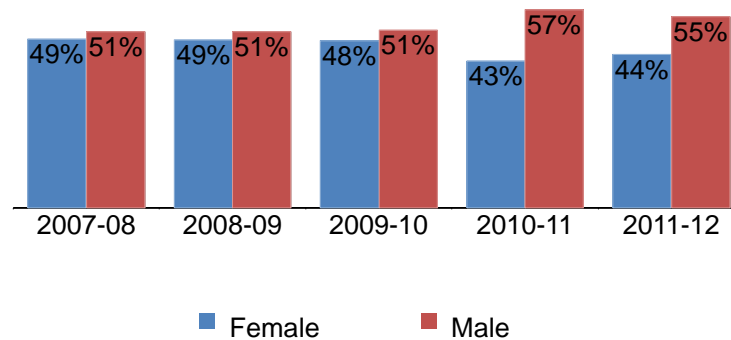


Figure 2.2.2. Continuing Education Annual GED Certificates by Gender

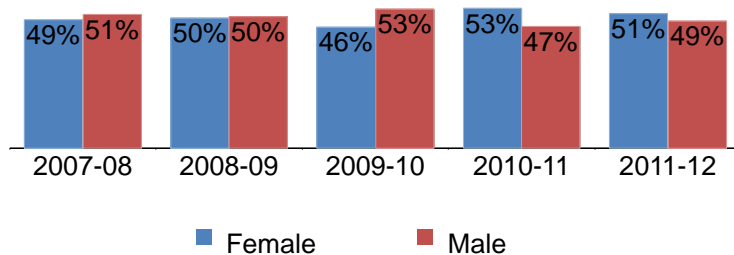
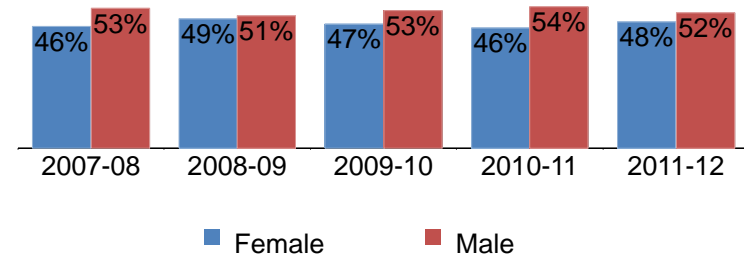


Figure 2.2.3. Continuing Education Annual High School Diplomas by Gender



Continuing Education Fact Book 2012

Table 2.2. Continuing Education Annual Awards Conferred by Gender

		2007-08		2008-09		2009-10		2010-11		2011-12		% Change 07/08-11/12	CE Average 07/08-11/12
CE Certificate of Completion	Female	284	49%	572	49%	455	48%	474	43%	626	44%	120%	46%
	Male	296	51%	600	51%	485	51%	638	57%	780	55%	164%	54%
	Unreported	1	0%	5	0%	2	0%	1	0%	1	0%	0%	0%
	Total	581	100%	1,177	100%	942	100%	1,113	100%	1,407	100%	142%	100%
GED Certificate	Female	96	49%	123	50%	85	46%	79	53%	53	51%	-45%	50%
	Male	100	51%	125	50%	98	53%	69	47%	50	49%	-50%	50%
	Unreported	0	0%	0	0%	1	1%	0	0%	0	0%	---	0%
	Total	196	100%	248	100%	184	100%	148	100%	103	100%	-47%	100%
High School Diploma	Female	227	46%	290	49%	65	47%	51	46%	29	48%	-87%	48%
	Male	261	53%	298	51%	72	53%	60	54%	31	52%	-88%	52%
	Unreported	1	0%	0	0%	0	0%	0	0%	0	0%	-100%	0%
	Total	489	100%	588	100%	137	100%	111	100%	60	100%	-88%	100%
Grand Total	1,266	100%	2,013	100%	1,263	100%	1,372	100%	1,570	100%	24%	100%	

Source: SDCCD Information System

Note. In 2009/10, reporting procedures for high school diplomas were revised to correspond with MIS reporting requirements.

Continuing Education Fact Book 2012

Annual Awards Conferred by Ethnicity: Between 2007/08 and 2011/12, Latino students received the greatest amount of certificates of completion (32%), followed by White students (27%), African American students (13%), and Asian/Pacific Islander students (11%) on average. Latino students received the most GED certificates awarded within Continuing Education (41%), followed by White students (29%), and African American students (12%) between 2007/08 and 2011/12. With the exception of Filipino students, all ethnic groups displayed an increased trend of receiving certificates of completion from 2007/08 to 2011/12.

Figure 2.3.1. Continuing Education Annual Certificates of Completion by Ethnicity

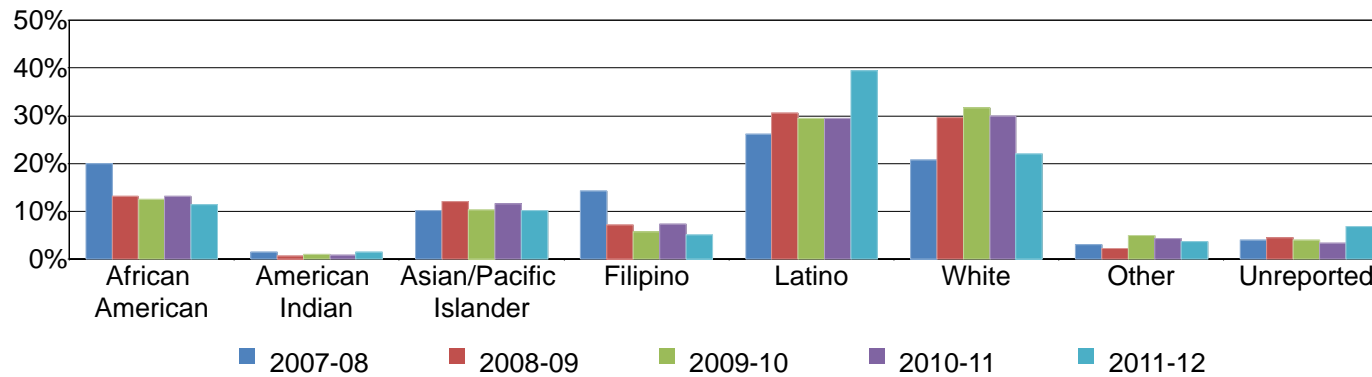
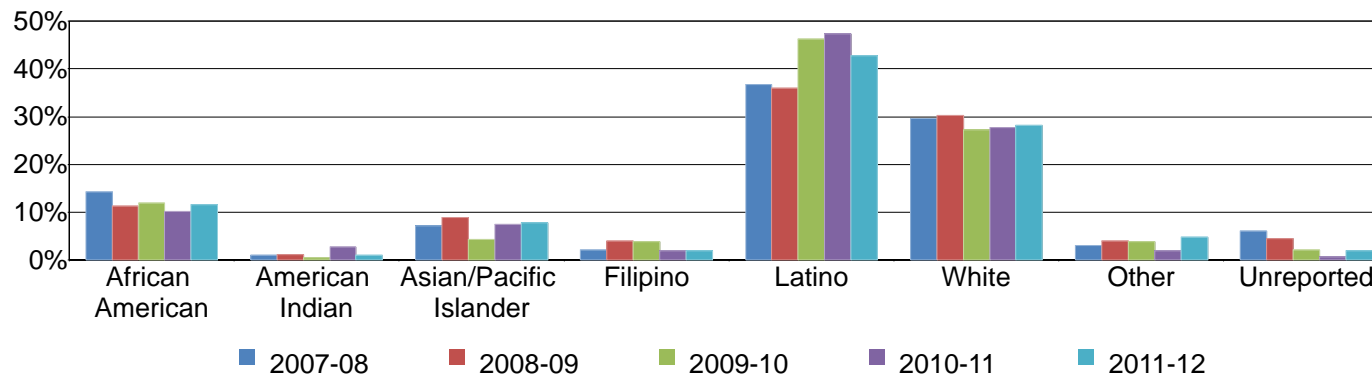
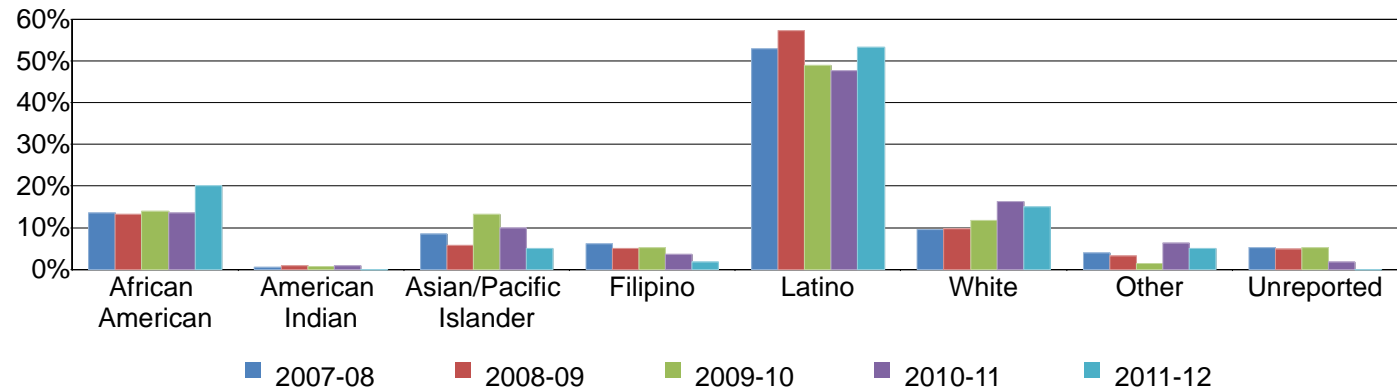


Figure 2.3.2. Continuing Education Annual GED Certificates by Ethnicity



Continuing Education Fact Book 2012

Figure 2.3.3. Continuing Education Annual High School Diploma by Ethnicity



Continuing Education Fact Book 2012

Table 2.3. Continuing Education Annual Awards Conferred by Ethnicity

		2007-08		2008-09		2009-10		2010-11		2011-12		% Change 07/08-11/12	CE Average 07/08-11/12
CE Certificate of Completion	African American	116	20%	156	13%	118	13%	147	13%	160	11%	38%	13%
	American Indian	9	2%	9	1%	10	1%	9	1%	20	1%	122%	1%
	Asian/Pacific Islander	59	10%	142	12%	98	10%	129	12%	144	10%	144%	11%
	Filipino	83	14%	84	7%	54	6%	82	7%	71	5%	-14%	7%
	Latino	152	26%	360	31%	278	30%	327	29%	555	39%	265%	32%
	White	121	21%	348	30%	299	32%	333	30%	309	22%	155%	27%
	Other	18	3%	26	2%	47	5%	48	4%	52	4%	189%	4%
	Unreported	23	4%	52	4%	38	4%	38	3%	96	7%	317%	5%
	Total	581	100%	1,177	100%	942	100%	1,113	100%	1,407	100%	142%	100%
GED Certificate	African American	28	14%	28	11%	22	12%	15	10%	12	12%	-57%	12%
	American Indian	2	1%	3	1%	1	1%	4	3%	1	1%	-50%	1%
	Asian/Pacific Islander	14	7%	22	9%	8	4%	11	7%	8	8%	-43%	7%
	Filipino	4	2%	10	4%	7	4%	3	2%	2	2%	-50%	3%
	Latino	72	37%	89	36%	85	46%	70	47%	44	43%	-39%	41%
	White	58	30%	75	30%	50	27%	41	28%	29	28%	-50%	29%
	Other	6	3%	10	4%	7	4%	3	2%	5	5%	-17%	4%
	Unreported	12	6%	11	4%	4	2%	1	1%	2	2%	-83%	3%
	Total	196	100%	248	100%	184	100%	148	100%	103	100%	-47%	100%
High School Diploma	African American	66	13%	78	13%	19	14%	15	14%	12	20%	-82%	14%
	American Indian	2	0%	5	1%	1	1%	1	1%	0	0%	-100%	1%
	Asian/Pacific Islander	41	8%	34	6%	18	13%	11	10%	3	5%	-93%	8%
	Filipino	30	6%	30	5%	7	5%	4	4%	1	2%	-97%	5%
	Latino	259	53%	337	57%	67	49%	53	48%	32	53%	-88%	54%
	White	47	10%	57	10%	16	12%	18	16%	9	15%	-81%	11%
	Other	19	4%	19	3%	2	1%	7	6%	3	5%	-84%	4%
	Unreported	25	5%	28	5%	7	5%	2	2%	0	0%	-100%	4%
	Total	489	100%	588	100%	137	100%	111	100%	60	100%	-88%	100%
Grand Total	1,266	100%	2,013	100%	1,263	100%	1,372	100%	1,570	100%	24%	100%	

Source: SDCCD Information System

Note. In 2009/10, reporting procedures for high school diplomas were revised to correspond with MIS reporting requirements.

Continuing Education Fact Book 2012

Annual Awards Conferred by Age: On average, students ages 30-39 years old received the most certificates of completion (27%), followed by students ages 40-49 years old (24%), and students ages 50 and older (20%). Students ages 18-24 years old received the greatest percentages of GEDs (46%), followed by students ages 30-39 years old (21%), and students ages 25-29 years old (19%). Apart from students under age 18, an upward trend was noted among all age groups who received certificates of completion between 2007/08 and 2011/12.

Figure 2.4.1. Continuing Education Annual Certificates of Completion by Age

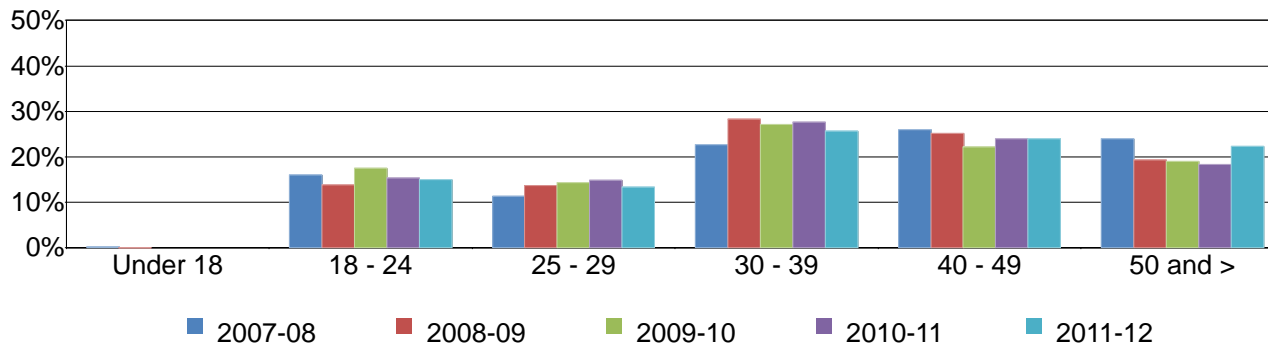
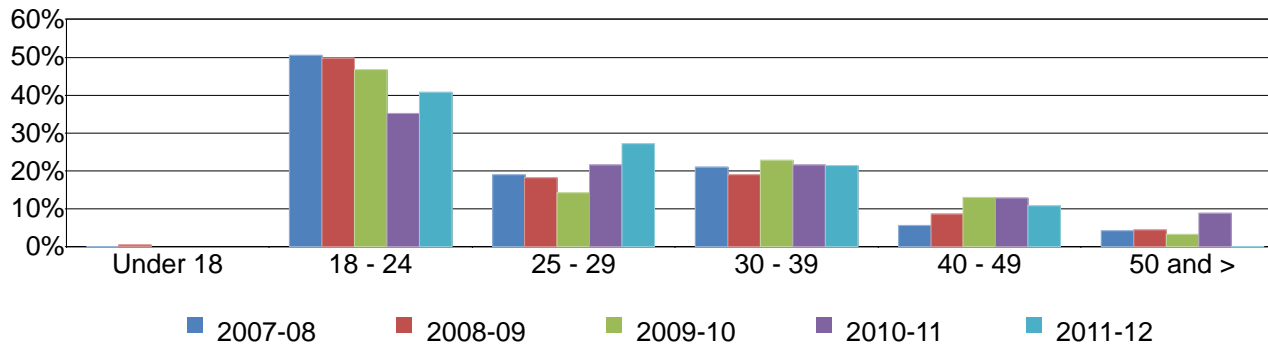
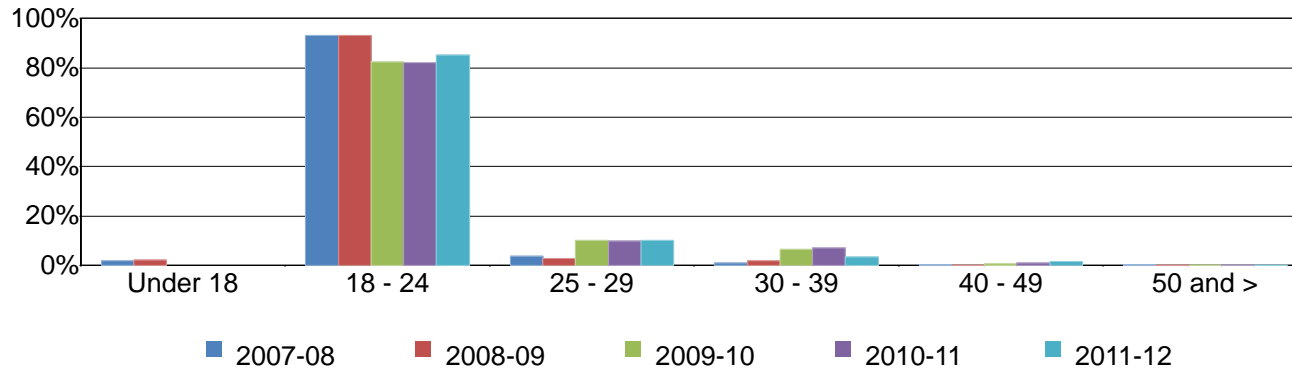


Figure 2.4.2. Continuing Education Annual GED Certificates by Age



Continuing Education Fact Book 2012

Figure 2.4.3. Continuing Education Annual High School Diplomas by Age



Continuing Education Fact Book 2012

Table 2.4. Continuing Education Annual Awards Conferred by Age

		2007-08		2008-09		2009-10		2010-11		2011-12		% Change 07/08-11/12	CE Average 07/08-11/12
CE Certificate of Completion	Under 18	1	0%	0	0%	0	0%	0	0%	0	0%	-100%	0%
	18 - 24	93	16%	162	14%	165	18%	171	15%	210	15%	126%	15%
	25 - 29	66	11%	161	14%	134	14%	165	15%	187	13%	183%	14%
	30 - 39	131	23%	332	28%	256	27%	307	28%	361	26%	176%	27%
	40 - 49	151	26%	295	25%	209	22%	266	24%	336	24%	123%	24%
	50 and >	139	24%	227	19%	178	19%	204	18%	313	22%	125%	20%
	Total	581	100%	1,177	100%	942	100%	1,113	100%	1,407	100%	142%	100%
GED Certificate	Under 18	0	0%	1	0%	0	0%	0	0%	0	0%	---	0%
	18 - 24	99	51%	123	50%	86	47%	52	35%	42	41%	-58%	46%
	25 - 29	37	19%	45	18%	26	14%	32	22%	28	27%	-24%	19%
	30 - 39	41	21%	47	19%	42	23%	32	22%	22	21%	-46%	21%
	40 - 49	11	6%	21	8%	24	13%	19	13%	11	11%	0%	10%
	50 and >	8	4%	11	4%	6	3%	13	9%	0	0%	-100%	4%
	Total	196	100%	248	100%	184	100%	148	100%	103	100%	-47%	100%
High School Diploma	Under 18	9	2%	13	2%	0	0%	0	0%	0	0%	-100%	2%
	18 - 24	455	93%	547	93%	113	82%	91	82%	51	85%	-89%	91%
	25 - 29	18	4%	17	3%	14	10%	11	10%	6	10%	-67%	5%
	30 - 39	5	1%	11	2%	9	7%	8	7%	2	3%	-60%	3%
	40 - 49	1	0%	0	0%	1	1%	1	1%	1	2%	0%	0%
	50 and >	1	0%	0	0%	0	0%	0	0%	0	0%	-100%	0%
	Total	489	100%	588	100%	137	100%	111	100%	60	100%	-88%	100%
Grand Total	1,266	100%	2,013	100%	1,263	100%	1,372	100%	1,570	100%	24%	100%	

Source: SDCCD Information System

Note. In 2009/10, reporting procedures for high school diplomas were revised to correspond with MIS reporting requirements.

**Section III
Productivity**

Continuing Education Fact Book 2012

This section of the Fact Book contains information on productivity measures. The following describes in detail each of the measures:

- 1) Annual FTES. The first measure reported in this section is a measure of productivity. Annual FTES is a calculation of full-time equivalent students and is based on the total number of attendance hours during the fall, summer, and spring terms of a given academic year.
- 2) Enrollments. The second measure in this section of the report is also a measure of productivity. Enrollments are duplicated counts of students. Enrollments and headcount differ in that enrollments count all of the classes in which a single student is enrolled, while unduplicated headcount counts the student only once regardless of the number of classes he/she may be enrolled in.

Continuing Education Fact Book 2012

Annual FTES: Continuing Education showed an increase in total FTES between 2007/08 and 2008/09 and then a steady decline in FTES between 2009/10 and 2011/12. Continuing Education non-credit FTES displayed a 20% decrease, from approximately 9,987 FTES in 2007/08 to 7,942 FTES in 2011/12. There was no credit FTES for Continuing Education.

Figure 3.1. Continuing Education Resident & Non Resident Annual FTES

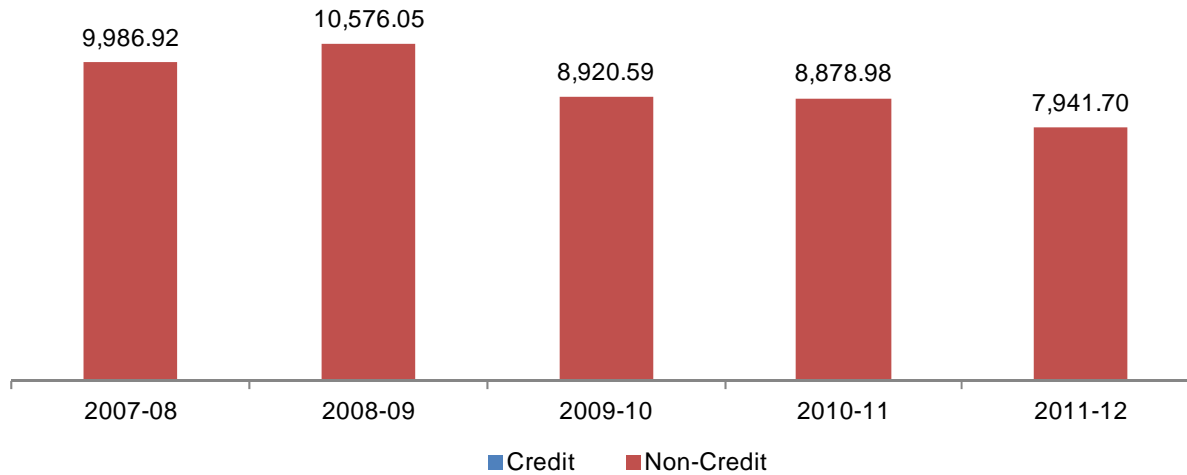


Table 3.1. Continuing Education Resident & Non Resident Annual FTES

	2007-08	2008-09	2009-10	2010-11	2011-12
Credit	0.00	0.00	0.00	0.00	0.00
Non-Credit	9,986.92	10,576.05	8,920.59	8,878.98	7,941.70
Total	9,986.92	10,576.05	8,920.59	8,878.98	7,941.70

Source: SDCCD Information System

Continuing Education Fact Book 2012

Enrollments: The enrollment trend for the on campus mode of instruction decreased for the summer (55%), fall (27%), and spring (31%) terms between 2007/08 and 2011/12. The enrollment trend for the online mode of instruction increased for the summer (114%), fall (83%), and spring (132%) terms between 2007/08 and 2011/12.

Figure 3.2.1. Continuing Education Enrollments (Summer)

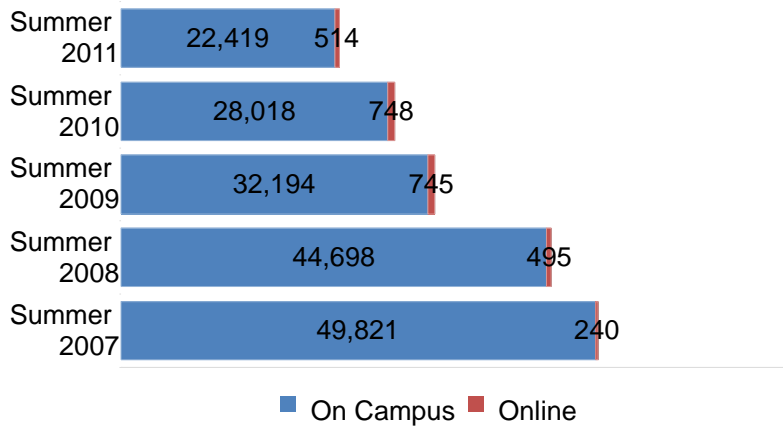


Figure 3.2.2. Continuing Education Enrollments (Fall)

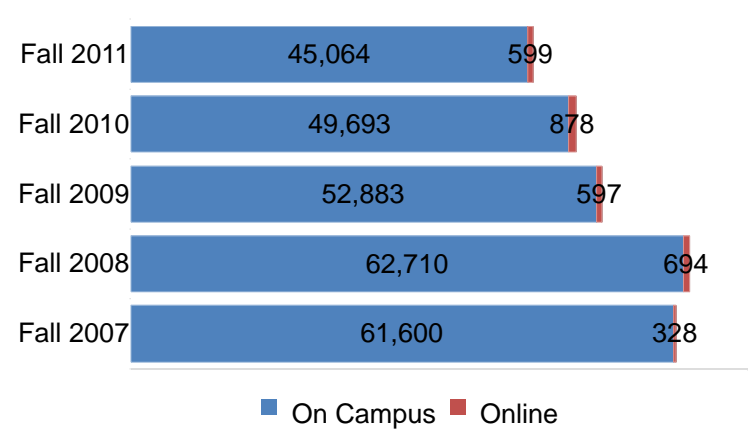
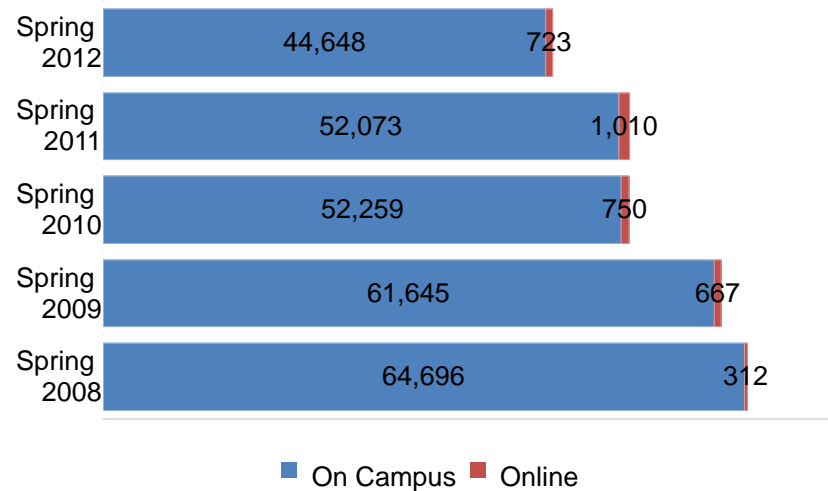


Figure 3.2.3. Continuing Education Enrollments (Spring)



Continuing Education Fact Book 2012

Table 3.2. Continuing Education Enrollments

	On Campus	Online	Total
Summer 2007	49,821	240	50,061
Summer 2008	44,698	495	45,193
Summer 2009	32,194	745	32,939
Summer 2010	28,018	748	28,766
Summer 2011	22,419	514	22,933
Total	177,150	2,742	179,892

	On Campus	Online	Total
Fall 2007	61,600	328	61,928
Fall 2008	62,710	694	63,404
Fall 2009	52,883	597	53,480
Fall 2010	49,693	878	50,571
Fall 2011	45,064	599	45,663
Total	271,950	3,096	275,046

	On Campus	Online	Total
Spring 2008	64,696	312	65,008
Spring 2009	61,645	667	62,312
Spring 2010	52,259	750	53,009
Spring 2011	52,073	1,010	53,083
Spring 2012	44,648	723	45,371
Total	275,321	3,462	278,783

Source: SDCCD Information System

**Section IV
Human Resources**

Continuing Education Fact Book 2012

This section of the Fact Book contains information on the number and classification of employees during the Fall 2011 semester. The information is reported as follows:

- 1) Gender
- 2) Ethnicity
- 3) Employment Type

Continuing Education Fact Book 2012

Fall 2011 Employee Breakdown: There were a total of 649 employees working at Continuing Education during Fall 2011. The largest group, over half of the Continuing Education employees (58%), comprised adjunct faculty, followed by contract faculty (15%), classified staff (14%), and non-academic hourly (9%). Supervisory staff and management constituted the smallest proportions of Continuing Education employees at 1% and 2%, respectively.

The ethnic breakdown showed that White employees comprised 54% of the total employee population, followed by Latino employees (18%), and African American employees constituted 10% of the Continuing Education workforce. Latino employees comprised approximately one third of the classified staff and non-academic hourly positions (32% & 34%, respectively). White employees constituted 26% of the classified staff positions and made up nearly two-thirds of the contract and adjunct faculty positions (64% & 65%, respectively) compared to all other ethnic groups. White employees comprised 40% of the management positions and 67% of the supervisory positions. Latino employees constituted 10% of the management positions and 11% of the supervisory positions. African American employees comprised 10% of the management positions and 11% of the supervisory positions.

Figure 5.1. Continuing Education Fall 2011 Employees by Employment Type

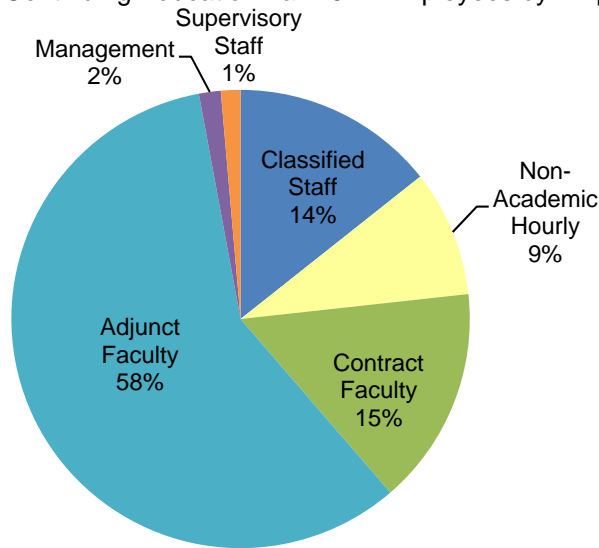
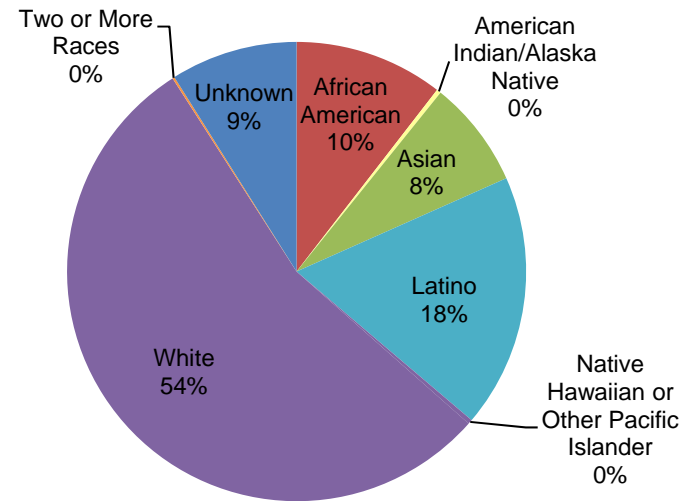


Figure 5.2. Continuing Education Fall 2011 Employees by Ethnicity



Continuing Education Fact Book 2012

Table 5.1. Continuing Education Fall 2011 Employees by Ethnicity

	African American		American Indian/ Alaska Native		Asian		Latino		Native Hawaiian or Other Pacific Islander		White		Two or More Races		Unreported		Total
Total Employees:	68	10%	2	0%	49	8%	116	18%	2	0%	353	54%	1	0%	58	9%	649
Male:	25	13%	0	0%	16	9%	32	17%	2	1%	86	46%	1	1%	26	14%	188
Female:	43	9%	2	0%	33	7%	84	18%	0	0%	267	58%	0	0%	32	7%	461
Classified Staff :	16	17%	1	1%	10	11%	30	32%	0	0%	24	26%	0	0%	12	13%	93
Male:	3	13%	0	0%	2	9%	6	26%	0	0%	9	39%	0	0%	3	13%	23
Female:	13	19%	1	1%	8	11%	24	34%	0	0%	15	21%	0	0%	9	13%	70
Non-Academic Hourly:	17	29%	0	0%	8	14%	20	34%	1	2%	7	12%	0	0%	5	9%	58
Male:	10	38%	0	0%	5	19%	4	15%	1	4%	2	8%	0	0%	4	15%	26
Female:	7	22%	0	0%	3	9%	16	50%	0	0%	5	16%	0	0%	1	3%	32
Contract Faculty:	4	4%	1	1%	3	3%	16	16%	0	0%	64	64%	0	0%	12	12%	100
Male:	1	4%	0	0%	1	4%	4	15%	0	0%	14	54%	0	0%	6	23%	26
Female:	3	4%	1	1%	2	3%	12	16%	0	0%	50	68%	0	0%	6	8%	74
Adjunct Faculty:	29	8%	0	0%	27	7%	48	13%	1	0%	248	65%	1	0%	25	7%	379
Male:	11	10%	0	0%	7	7%	17	16%	1	1%	60	56%	1	1%	10	9%	107
Female:	18	7%	0	0%	20	7%	31	11%	0	0%	188	69%	0	0%	15	6%	272
Management:	1	10%	0	0%	1	10%	1	10%	0	0%	4	40%	0	0%	3	30%	10
Male:	0	0%	0	0%	1	25%	0	0%	0	0%	1	25%	0	0%	2	50%	4
Female:	1	17%	0	0%	0	0%	1	17%	0	0%	3	50%	0	0%	1	17%	6
Supervisory Staff:	1	11%	0	0%	0	0%	1	11%	0	0%	6	67%	0	0%	1	11%	9
Male:	0	0%	0	0%	0	0%	1	50%	0	0%	0	0%	0	0%	1	50%	2
Female:	1	14%	0	0%	0	0%	0	0%	0	0%	6	86%	0	0%	0	0%	7

Source: SDCCD Information System

Table 5.2. Continuing Education Employees by Gender and Employment Status

Gender		Employment Status	
Female	71%	Full-Time/Contract	33%
Male	29%	Hourly/Adjunct	67%

Source: SDCCD Information System