

2012

Fact Book

Mesa College



Prepared by:
Office of Institutional Research and Planning
September 2012

Mesa College Fact Book 2012

Overview.....	1	Annual Retention Rates	
Section I.I. Headcount and Student Characteristics	2	Overall.....	35
Section Overview	3	By Gender	36
Overall	4	By Ethnicity	37
By Gender.....	5	By Age.....	38
By Ethnicity.....	6	Annual GPA	
By Age.....	7	Overall.....	39
By Enrollment Status	8	By Gender	40
By Educational Objective	9	By Ethnicity	41
By Primary Language.....	11	By Age.....	42
By Prior Education Level	12	Annual Awards Conferred	
By Service Area of Residence	13	Overall.....	43
By First Generation	14	By Gender	44
By Income Level	15	By Ethnicity	46
By DSPS	16	By Age.....	50
By EOPS.....	17	Annual Transfer Volume	
By Day, Evening, and Online Status	18	Overall.....	53
By Units Attempted by Units Earned	19	By Gender	54
Section II. Fall to Spring Term Persistence Rates	21	By Ethnicity	55
Section Overview	22	By Age.....	56
Overall	23	By CSU-UC/Private (In-state)/Out-of-State	57
By Gender.....	24	By CSU/UC	58
By Ethnicity.....	25	By Institution Type (Private vs. Public).....	59
By Age.....	27	Section IV. Productivity and Efficiency	60
Section III. Student Outcomes	29	Section Overview.....	61
Section Overview	30	Annual FTES	62
Annual Success Rates		Enrollments: Online and On Campus	63
Overall	31	Fill Rates.....	64
By Gender.....	32	Load	66
By Ethnicity.....	33	Section V. Human Resources	67
By Age.....	34	Section Overview	68
		Fall 2011 Employee Breakdown	69

Mesa College Fact Book 2012

OVERVIEW

This Fact Book is a publication of the Office of Institutional Research and Planning for the San Diego Community College District. It is designed to serve the information needs of the community with a primary focus on student enrollment, demographics, and outcomes.

The Fact Book is a rich source of districtwide trend information that may be used for planning and decision making. The book contains the following five sections:

- 1) **Headcount and Student Characteristics.** Provides information on student demographic characteristics (e.g., age, ethnicity, and education objective) over five years.
- 2) **Term Persistence Rates.** Provides information about first-time to college students who complete a fall term and enroll in the subsequent spring term. The information is also reported by demographic characteristics of interest.
- 3) **Student Outcomes.** Provides information on students' successful course completion rates, retention rates, GPA, awards conferred, and transfer volume. All of the information is provided in summary form, as well as demographic characteristics of interest.
- 4) **Productivity and Efficiency.** Provides information on annual FTES, enrollment, fill rates, and Load (WSCH/FTEF).
- 5) **Human Resources.** Provides information on the number of employees by ethnicity, gender and employment type.

Each section contains the following benchmarks: 1) The percentage change over the five year period being reported, 2) The collegewide average, and 3) The "All Colleges" averages includes all three colleges.

Section I
Headcount and Student Characteristics

Mesa College Fact Book 2012

This section of the Fact Book contains student headcount by various student characteristics. The headcount figures are single student counts (unduplicated headcount) based on official census counts at the end of the semester (all students who dropped or never attended prior to the class census date were not included). Furthermore, all cancelled classes are excluded from analyses. The headcount information is reported over a period of five years to analyze trends and establish benchmarks. Headcount information is reported by the following segments:

- 1) Overall
- 2) Gender
- 3) Ethnicity
- 4) Age
- 5) Enrollment Status
- 6) Educational Objective
- 7) Primary Language
- 8) Prior Education Level
- 9) Service Area of Residence
- 10) First Generation
- 11) Income Level
- 12) DSPS
- 13) EOPS
- 14) Day, Evening, and Online Status
- 15) Units Attempted by Units Earned

Mesa College Fact Book 2012

Overall Headcount: Mesa College unduplicated student headcount increased 10%, from 22,441 in Fall 2007 to 24,667 in Fall 2011. From Spring 2008 to Spring 2012, unduplicated student headcount also increased (15%). Finally, summer unduplicated headcount decreased 94%, from 10,875 in Summer 2007 to 660 in Summer 2011.

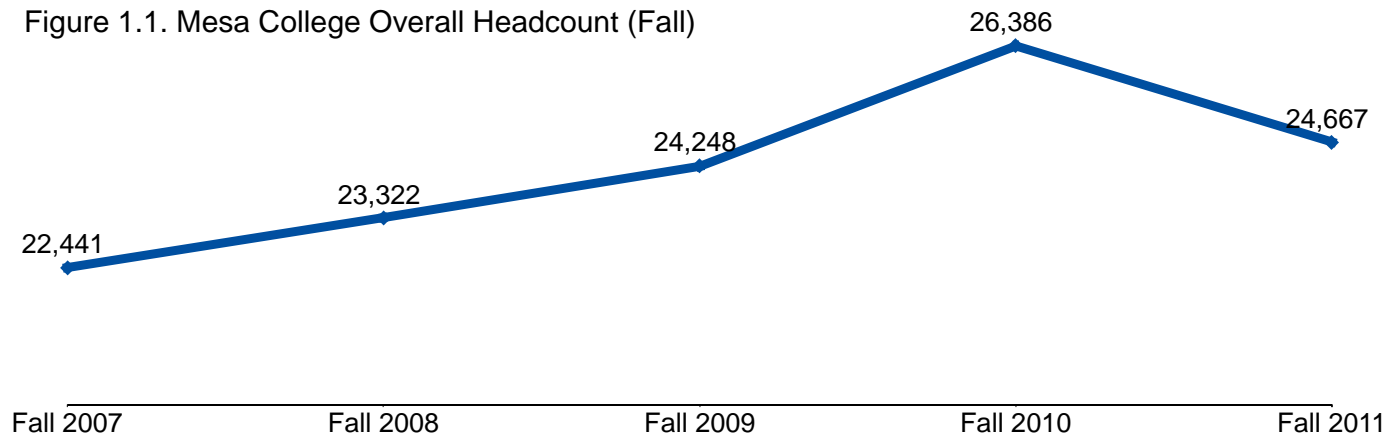


Table 1.1. Mesa College Overall Headcount (Summer, Fall, and Spring)

	Summer 07	Summer 08	Summer 09	Summer 10	Summer 11	% Change Summer 07-11
Total	10,875	12,003	11,505	9,582	660	-94%

	Fall 07	Fall 08	Fall 09	Fall 10	Fall 11	% Change Fall 07-11
Total	22,441	23,322	24,248	26,386	24,667	10%

	Spring 08	Spring 09	Spring 10	Spring 11	Spring 12	% Change Spring 08-12
Total	22,755	23,967	24,751	26,994	26,244	15%

Source: SDCCD Information System

Mesa College Fact Book 2012

Headcount by Gender: On average, the female student headcount (53%) was higher than their male student counterpart (47%). Both the male and female student headcounts increased (14% & 6%, respectively) between Fall 2007 and Fall 2011.

Figure 1.2. Mesa College Headcount by Gender

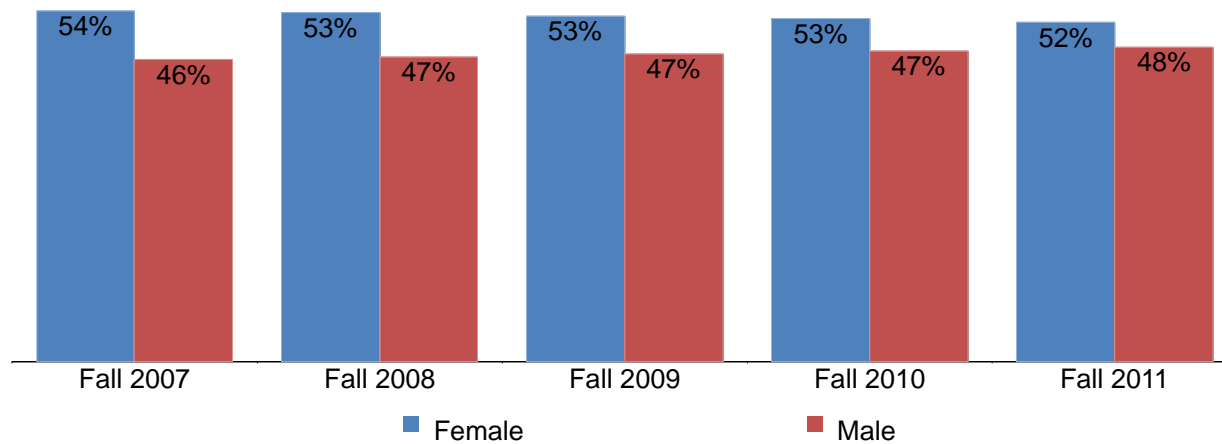


Table 1.2. Mesa College Headcount by Gender

	Fall 07		Fall 08		Fall 09		Fall 10		Fall 11		% Change Fall 07-11	College Average Fall 07-11	All Colleges Average Fall 07-11
Female	12,045	54%	12,449	53%	12,822	53%	13,856	53%	12,797	52%	6%	53%	51%
Male	10,374	46%	10,863	47%	11,424	47%	12,529	47%	11,869	48%	14%	47%	49%
Unreported	22	0%	10	0%	2	0%	1	0%	1	0%	-95%	0%	0%
Total	22,441	100%	23,322	100%	24,248	100%	26,386	100%	24,667	100%	10%	100%	100%

Source: SDCCD Information System

Mesa College Fact Book 2012

Headcount by Ethnicity: From Fall 2007 to Fall 2011, White students comprised the largest percentage of the Mesa College student population (38%), followed by Latino students (23%), and Asian/Pacific Islander students (15%). Both Latino and African American student headcounts increased (62% & 27%, respectively), as did the headcount for students categorized as ‘Other’ ethnicities (95%). Both White and Asian/Pacific Islander students at Mesa College (38% & 15%, respectively) were overrepresented compared to the same ethnic groups for all colleges in the district (36% & 12%, respectively). However, Latino student headcount at Mesa (23%) was underrepresented relative to the same ethnic group for all colleges in the district (26%).

Figure 1.3. Mesa College Headcount by Ethnicity

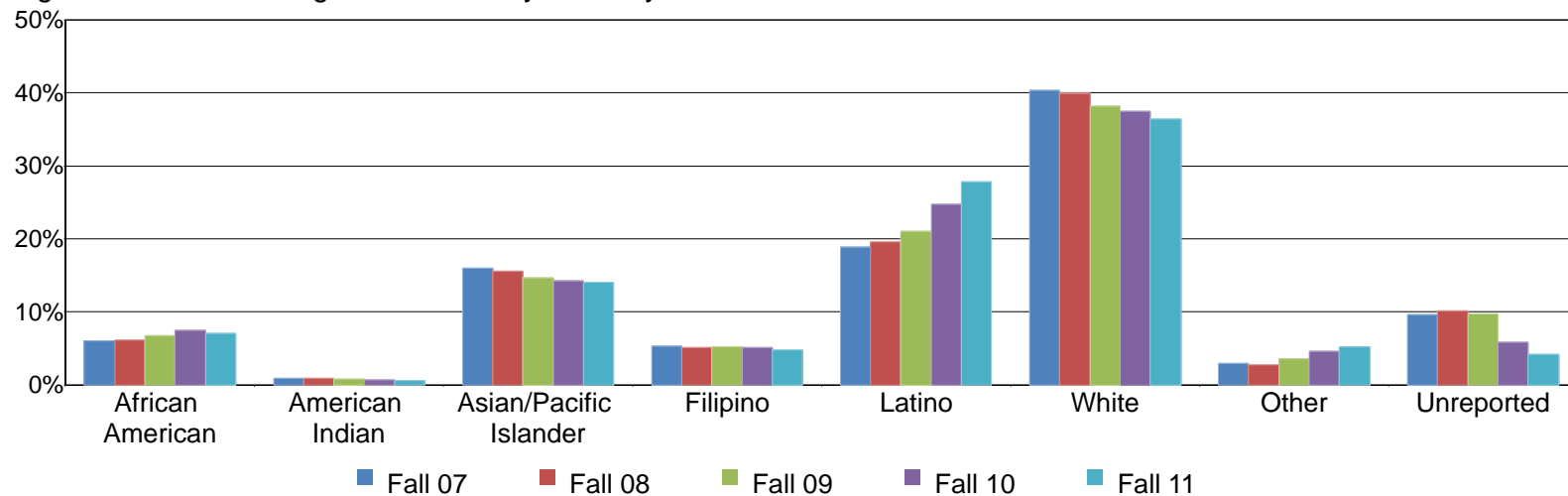


Table 1.3. Mesa College Headcount by Ethnicity

	Fall 07		Fall 08		Fall 09		Fall 10		Fall 11		% Change Fall 07-11	College Average Fall 07-11	All Colleges Average Fall 07-11
African American	1,362	6%	1,436	6%	1,640	7%	1,971	7%	1,729	7%	27%	7%	8%
American Indian	204	1%	208	1%	195	1%	174	1%	152	1%	-25%	1%	1%
Asian/Pacific Islander	3,583	16%	3,623	16%	3,558	15%	3,756	14%	3,470	14%	-3%	15%	12%
Filipino	1,191	5%	1,183	5%	1,257	5%	1,350	5%	1,184	5%	-1%	5%	6%
Latino	4,243	19%	4,574	20%	5,101	21%	6,522	25%	6,861	28%	62%	23%	26%
White	9,052	40%	9,318	40%	9,271	38%	9,876	37%	8,977	36%	-1%	38%	36%
Other	653	3%	627	3%	870	4%	1,199	5%	1,275	5%	95%	4%	4%
Unreported	2,153	10%	2,353	10%	2,356	10%	1,538	6%	1,019	4%	-53%	8%	7%
Total	22,441	100%	23,322	100%	24,248	100%	26,386	100%	24,667	100%	10%	100%	100%

Source: SDCCD Information System

Mesa College Fact Book 2012

Headcount by Age: Students between ages 18 and 24 years old, on average, comprised over half (57%) of the Mesa student population. Of the total Mesa student population, students age 50 and older increased 36%, from 699 in Fall 2007 to 948 in Fall 2011. However, students under 18 years old displayed a decreased trend in headcount (77%). Mesa College student headcount for those who were between ages 18 and 24 years old were overrepresented compared to the student headcount of the same age group for all colleges in the district (57% & 52%, respectively).

Figure 1.4. Mesa College Headcount by Age

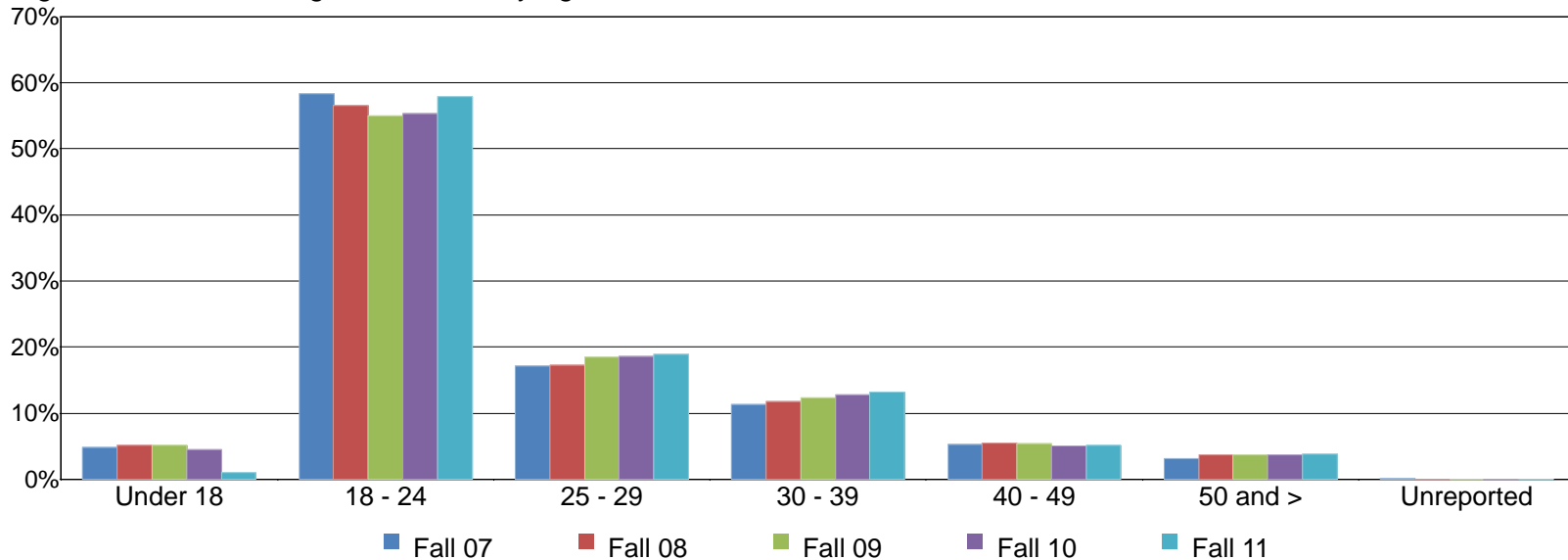


Table 1.4. Mesa College Headcount by Age

	Fall 07		Fall 08		Fall 09		Fall 10		Fall 11		% Change Fall 07-11	College Average Fall 07-11	All Colleges Average Fall 07-11
Under 18	1,078	5%	1,205	5%	1,253	5%	1,174	4%	245	1%	-77%	4%	3%
18 - 24	13,086	58%	13,188	57%	13,324	55%	14,611	55%	14,277	58%	9%	57%	52%
25 - 29	3,841	17%	4,034	17%	4,475	18%	4,915	19%	4,657	19%	21%	18%	18%
30 - 39	2,537	11%	2,749	12%	2,983	12%	3,378	13%	3,261	13%	29%	12%	15%
40 - 49	1,179	5%	1,269	5%	1,304	5%	1,342	5%	1,279	5%	8%	5%	7%
50 and >	699	3%	869	4%	908	4%	964	4%	948	4%	36%	4%	5%
Unreported	21	0%	8	0%	1	0%	2	0%	0	0%	-100%	0%	0%
Total	22,441	100%	23,322	100%	24,248	100%	26,386	100%	24,667	100%	10%	100%	100%

Source: SDCCD Information System

Mesa College Fact Book 2012

Headcount by Enrollment Status: On average, continuing students accounted for nearly two thirds (64%) of the Mesa College student population. Student headcount increased for first-time students (26%), returning transfer students (24%), and returning students (21%). However, the number of current high school student enrolled at Mesa College declined 79%, from 1,389 in Fall 2007 to 298 in Fall 2011.

Figure 1.5. Mesa College Headcount by Enrollment Status

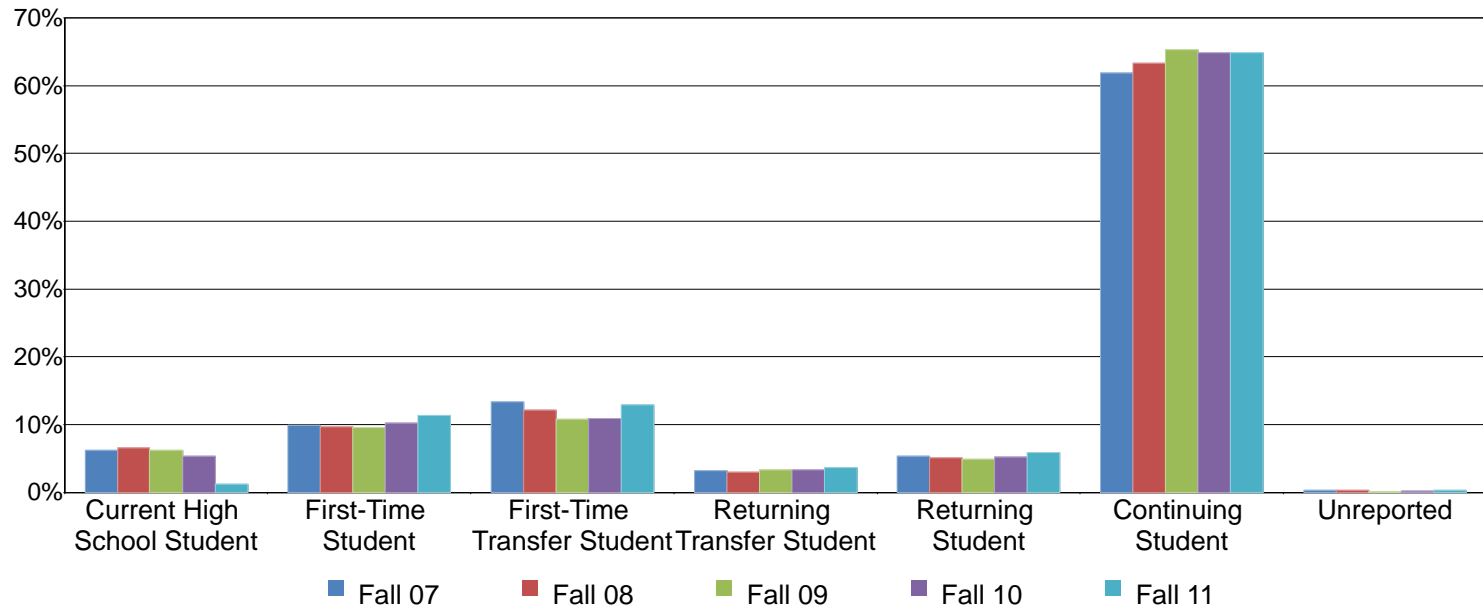


Table 1.5. Mesa College Headcount by Enrollment Status

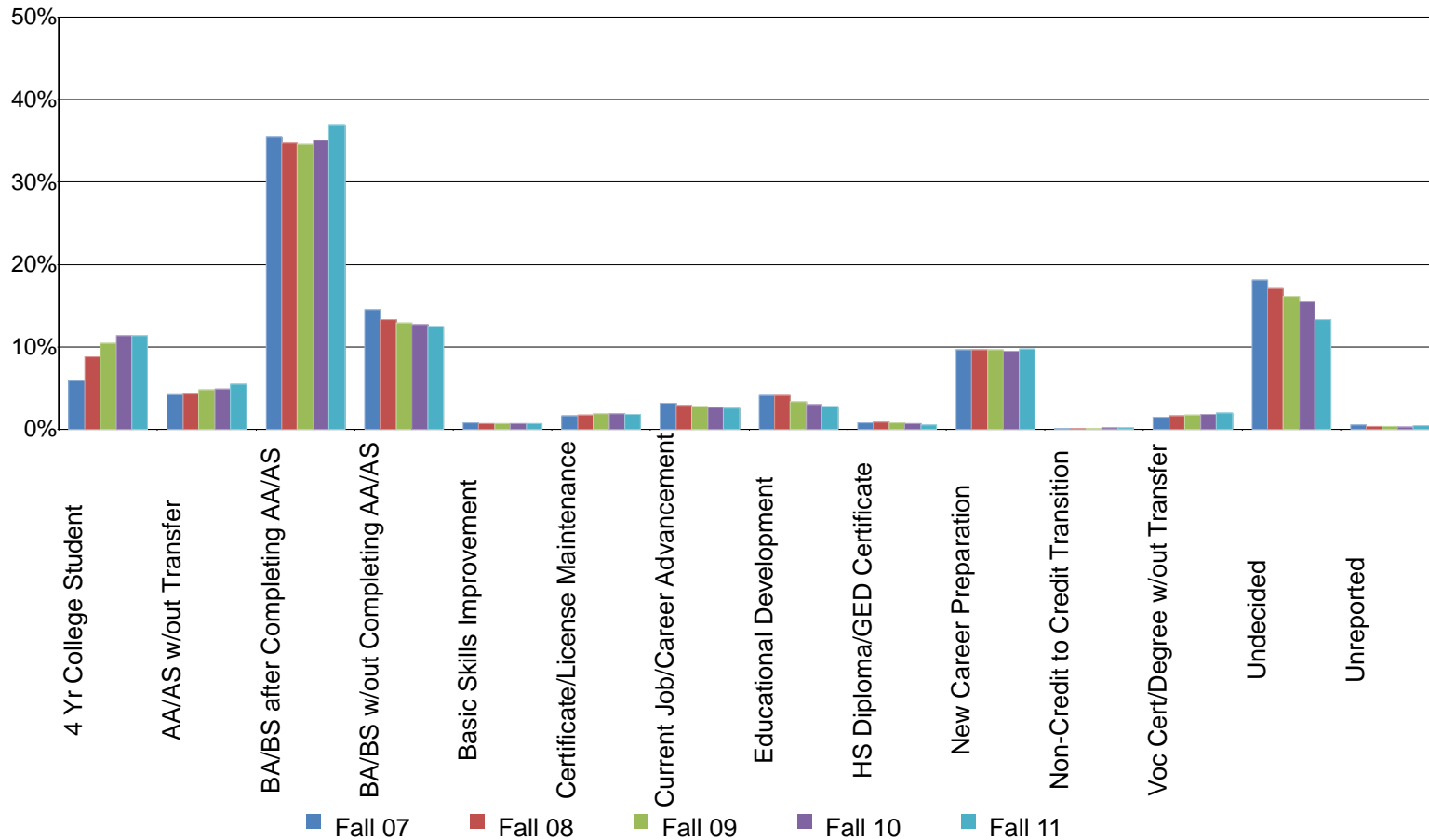
	Fall 07		Fall 08		Fall 09		Fall 10		Fall 11		% Change Fall 07-11	College Average Fall 07-11	All Colleges Average Fall 07-11
Current High School Student	1,389	6%	1,522	7%	1,499	6%	1,395	5%	298	1%	-79%	5%	3%
First-Time Student	2,206	10%	2,260	10%	2,302	9%	2,708	10%	2,790	11%	26%	10%	11%
First-Time Transfer Student	2,984	13%	2,822	12%	2,612	11%	2,872	11%	3,167	13%	6%	12%	12%
Returning Transfer Student	725	3%	698	3%	788	3%	862	3%	902	4%	24%	3%	4%
Returning Student	1,188	5%	1,193	5%	1,178	5%	1,378	5%	1,438	6%	21%	5%	7%
Continuing Student	13,892	62%	14,770	63%	15,841	65%	17,122	65%	16,009	65%	15%	64%	62%
Unreported	57	0%	57	0%	28	0%	49	0%	63	0%	11%	0%	0%
Total	22,441	100%	23,322	100%	24,248	100%	26,386	100%	24,667	100%	10%	100%	100%

Source: SDCCD Information System

Mesa College Fact Book 2012

Headcount by Educational Objective: From Fall 2007 to Fall 2011, nearly half of Mesa student population (48%) declared transfer to obtain a BA/BS with or without completing an AA/AS degree as their educational objective. Between Fall 2007 and Fall 2011, the educational objectives that made the most gains in popularity were transit from non-credit to credit (increased by 217%) and to be a four-year college student (increased by 113%). In contrast, students who selected educational development and to obtain high school diploma/GED certificate as educational objectives decreased 27% and 28%, respectively.

Figure 1.6. Mesa College Headcount by Educational Objective



Mesa College Fact Book 2012

Table 1.6. Mesa College Headcount by Educational Objective

	Fall 07		Fall 08		Fall 09		Fall 10		Fall 11		% Change Fall 07-11	College Average Fall 07-11	All Colleges Average Fall 07-11
4 Yr College Student	1,316	6%	2,056	9%	2,530	10%	2,997	11%	2,808	11%	113%	10%	8%
AA/AS w/out Transfer	934	4%	989	4%	1,153	5%	1,288	5%	1,350	5%	45%	5%	5%
BA/BS after Completing AA/AS	7,961	35%	8,090	35%	8,386	35%	9,245	35%	9,104	37%	14%	35%	34%
BA/BS w/out Completing AA/AS	3,263	15%	3,098	13%	3,128	13%	3,361	13%	3,072	12%	-6%	13%	11%
Basic Skills Improvement	162	1%	150	1%	161	1%	166	1%	173	1%	7%	1%	1%
Certificate/License Maintenance	356	2%	394	2%	445	2%	498	2%	446	2%	25%	2%	2%
Current Job/Career Advancement	707	3%	670	3%	658	3%	689	3%	620	3%	-12%	3%	4%
Educational Development	911	4%	961	4%	811	3%	788	3%	668	3%	-27%	3%	3%
HS Diploma/GED Certificate	162	1%	204	1%	194	1%	188	1%	116	0%	-28%	1%	1%
New Career Preparation	2,161	10%	2,240	10%	2,344	10%	2,494	9%	2,402	10%	11%	10%	11%
Non-Credit to Credit Transition	12	0%	27	0%	23	0%	37	0%	38	0%	217%	0%	0%
Voc Cert/Degree w/out Transfer	321	1%	383	2%	412	2%	481	2%	487	2%	52%	2%	2%
Undecided	4,063	18%	3,973	17%	3,915	16%	4,081	15%	3,285	13%	-19%	16%	16%
Unreported	112	0%	87	0%	88	0%	73	0%	98	0%	-13%	0%	1%
Total	22,441	100%	23,322	100%	24,248	100%	26,386	100%	24,667	100%	10%	100%	100%

Source: SDCCD Information System

Mesa College Fact Book 2012

Headcount by Primary Language: On average, the majority of the Mesa College student population (93%) indicated English as their primary language. This figure mirrored the average for all colleges in the district. During the same time period, the number of Mesa College students who indicated they spoke a language other than English increased 31% as well as those students who indicated English as their primary language (9%).

Figure 1.7. Mesa College Headcount by Primary Language

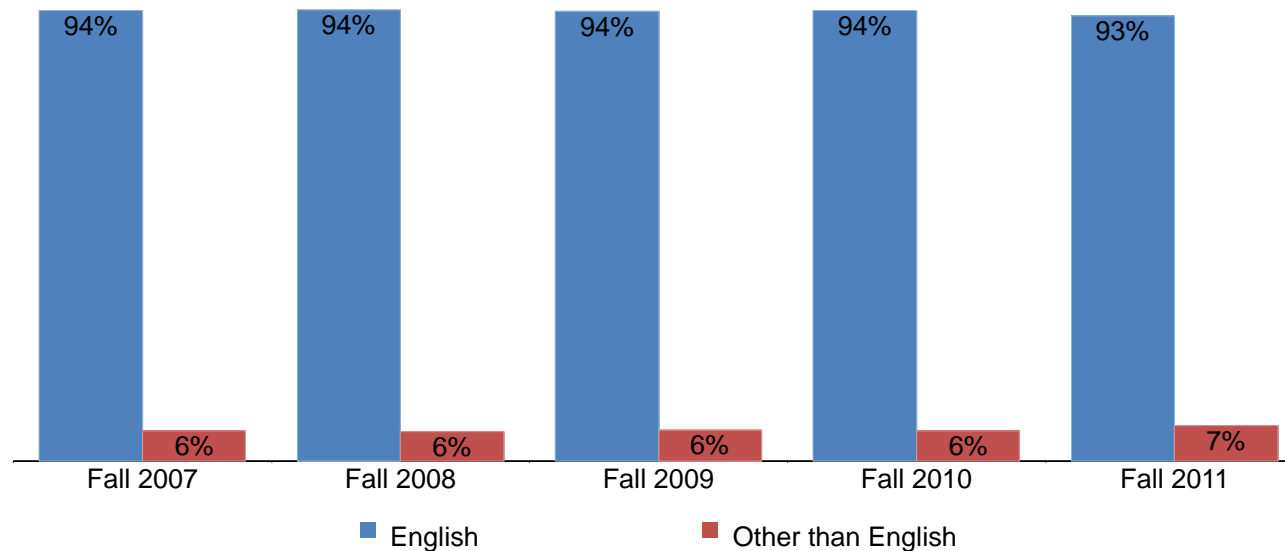


Table 1.7. Mesa College Headcount by Primary Language

	Fall 07		Fall 08		Fall 09		Fall 10		Fall 11		% Change Fall 07-11	College Average Fall 07-11	All Colleges Average Fall 07-11
English	21,021	94%	21,882	94%	22,684	94%	24,755	94%	22,842	93%	9%	93%	93%
Other than English	1,386	6%	1,424	6%	1,562	6%	1,627	6%	1,821	7%	31%	6%	7%
Unreported	34	0%	16	0%	2	0%	4	0%	4	0%	-88%	0%	0%
Total	22,441	100%	23,322	100%	24,248	100%	26,386	100%	24,667	100%	10%	100%	100%

Source: SDCCD Information System

Mesa College Fact Book 2012

Headcount by Prior Education Level: For the past five fall terms, a majority of the Mesa College student population (68%) were high school graduates on average. Mesa College students who had a GED/HS certificate increased 40%, from 743 in Fall 2007 to 1,041 in Fall 2011. On average, 11% of the Mesa student population had a bachelor's degree or higher and 4% had an associate degree.

Figure 1.8. Mesa College Headcount by Prior Education Level

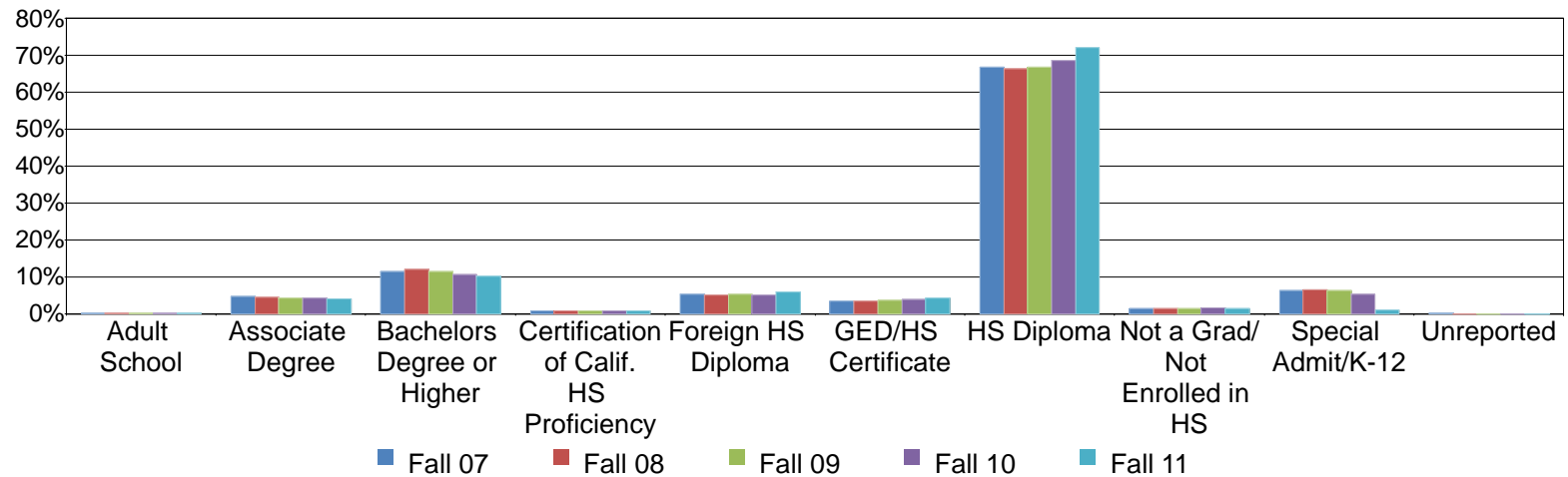


Table 1.8. Mesa College Headcount by Prior Education Level

	Fall 07	Fall 08	Fall 09	Fall 10	Fall 11	% Change Fall 07-11	College Average Fall 07-11	All Colleges Average Fall 07-11
Adult School	43	53	54	50	43	0%	0%	0%
Associate Degree	1,018	1,012	1,040	1,124	992	-3%	4%	5%
Bachelors Degree or Higher	2,572	2,791	2,777	2,776	2,527	-2%	11%	11%
Certification of Calif. HS Proficiency	167	186	205	219	198	19%	1%	1%
Foreign HS Diploma	1,192	1,167	1,251	1,338	1,459	22%	5%	5%
GED/HS Certificate	743	815	889	1,013	1,041	40%	4%	5%
HS Diploma	15,002	15,457	16,181	18,086	17,805	19%	68%	68%
Not a Grad/Not Enrolled in HS	297	313	350	392	350	18%	1%	2%
Special Admit/K-12	1,385	1,519	1,501	1,387	252	-82%	5%	3%
Unreported	20	7	0	0	0	-100%	0%	0%
Total	22,439	23,320	24,248	26,385	24,667	10%	100%	100%

Source: SDCCD Information System

Mesa College Fact Book 2012

Headcount by Service Area of Residence: Between Fall 2007 and Fall 2011, on average, one in three Mesa College students (33%) resided within the Mesa service area. Among the three college service areas, the greatest proportion of Mesa students resided within its service area. Thirty-one percent of the students who attended Mesa College resided outside of the Mesa service area.

Figure 1.9. Mesa College Headcount by Service Area of Residence

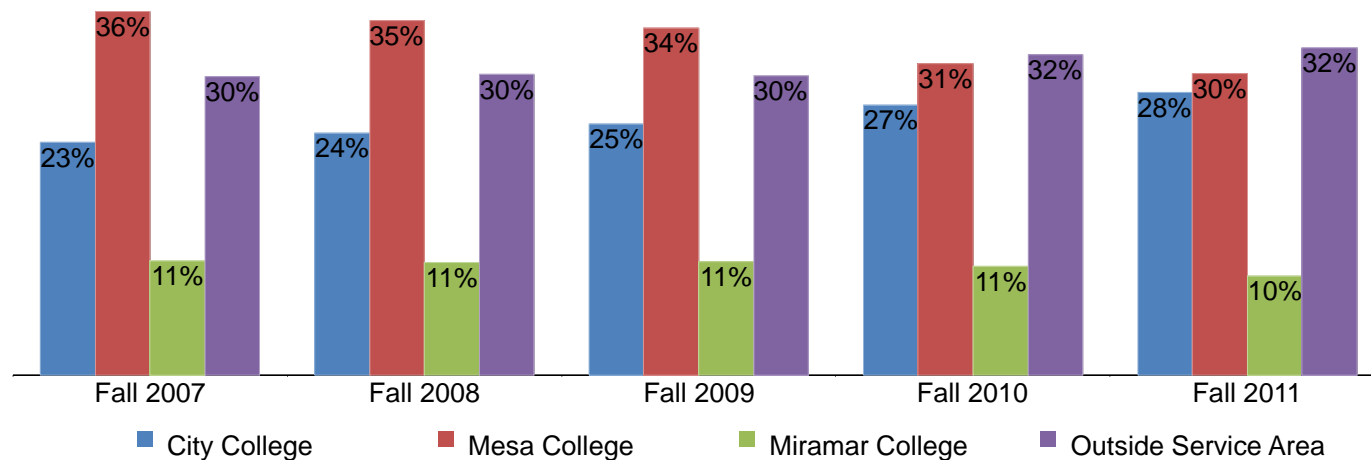


Table 1.9. Mesa College Headcount by Service Area of Residence

	Fall 07		Fall 08		Fall 09		Fall 10		Fall 11		% Change Fall 07-11	College Average Fall 07-11	All Colleges Average Fall 07-11
City College	5,168	23%	5,582	24%	6,017	25%	7,055	27%	6,902	28%	34%	25%	30%
Mesa College	8,079	36%	8,177	35%	8,323	34%	8,123	31%	7,364	30%	-9%	33%	22%
Miramar College	2,541	11%	2,604	11%	2,719	11%	2,832	11%	2,408	10%	-5%	11%	11%
Outside Service Area	6,631	30%	6,950	30%	7,189	30%	8,375	32%	7,993	32%	21%	31%	37%
Unreported	20	0%	7	0%	0	0%	0	0%	0	0%	-100%	0%	0%
Total	22,439	100%	23,320	100%	24,248	100%	26,385	100%	24,667	100%	10%	100%	100%

Source: SDCCD Information System

Mesa College Fact Book 2012

Headcount by First Generation: From Fall 2007 to Fall 2011, on average, about one quarter (24%) of the Mesa College student population indicated they were first generation college students. During the same time frame, both students who indicated they were first generation college students and were not first generation college students displayed increases in headcount (27% & 6%, respectively).

Figure 1.10. Mesa College Headcount by First Generation

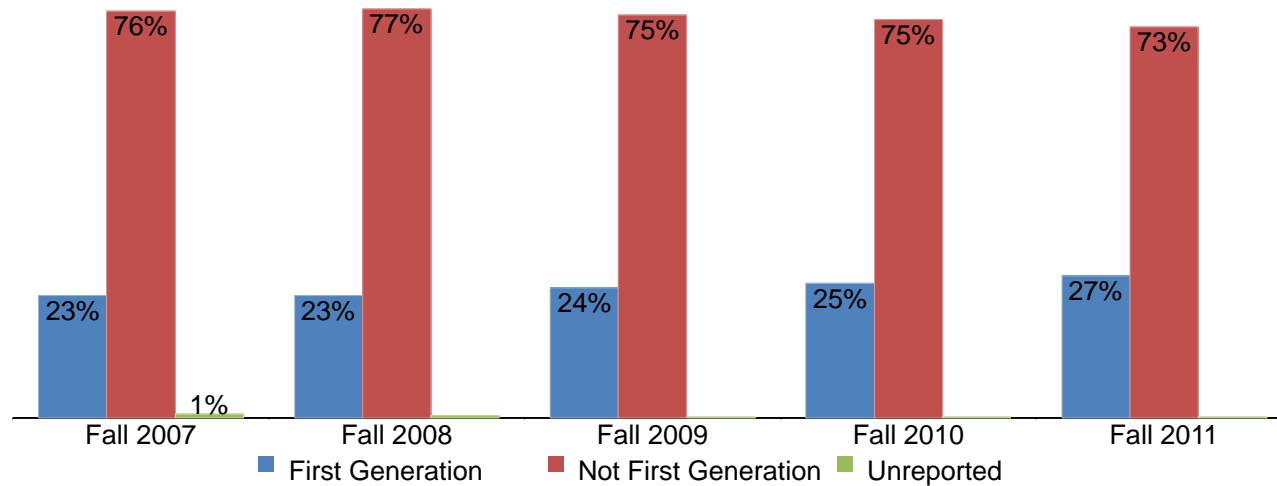


Table 1.10. Mesa College Headcount by First Generation

	Fall 07	Fall 08	Fall 09	Fall 10	Fall 11	% Change Fall 07-11	College Average Fall 07-11	All Colleges Average Fall 07-11
First Generation	5,163	5,352	5,898	6,646	6,560	27%	24%	27%
Not First Generation	17,119	17,877	18,301	19,698	18,076	6%	75%	73%
Unreported	157	91	49	41	31	-80%	0%	0%
Total	22,439	23,320	24,248	26,385	24,667	10%	100%	100%

Source: SDCCD Information System

Mesa College Fact Book 2012

Headcount by Income Level: Between Fall 2007 and Fall 2011, one quarter (25%) of the Mesa College student population reported an annual income of \$33,000 or more on average. During the same time period, the number of Mesa students with an annual income of less than \$3,000 increased substantially (63%). It should be noted that nearly one-third of students (28%) did not report their income level. Consequently, the data may not be representative of the actual income level of students at Mesa College.

Figure 1.11. Mesa College Headcount by Income Level

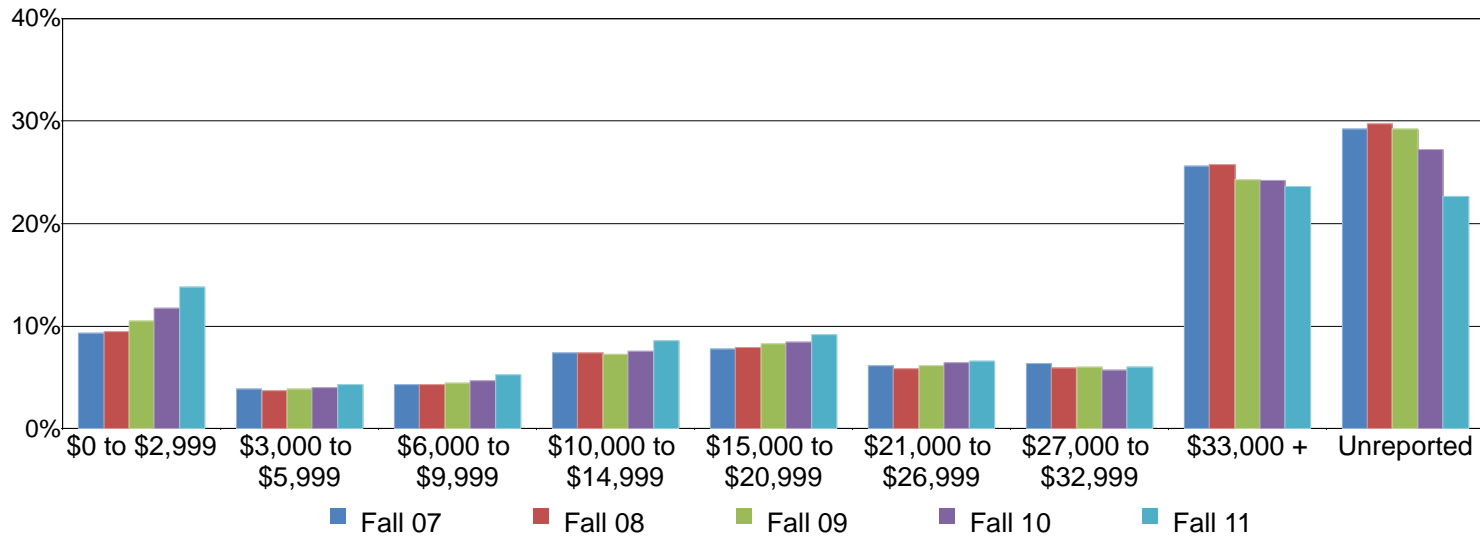


Table 1.11. Mesa College Headcount by Income Level

	Fall 07		Fall 08		Fall 09		Fall 10		Fall 11		% Change Fall 07-11	College Average Fall 07-11	All Colleges Average Fall 07-11
\$0 to \$2,999	2,090	9%	2,207	9%	2,539	10%	3,091	12%	3,409	14%	63%	11%	11%
\$3,000 to \$5,999	860	4%	864	4%	935	4%	1,052	4%	1,062	4%	23%	4%	4%
\$6,000 to \$9,999	972	4%	1,005	4%	1,076	4%	1,227	5%	1,293	5%	33%	5%	4%
\$10,000 to \$14,999	1,657	7%	1,718	7%	1,759	7%	1,991	8%	2,110	9%	27%	8%	8%
\$15,000 to \$20,999	1,746	8%	1,842	8%	2,012	8%	2,234	8%	2,268	9%	30%	8%	9%
\$21,000 to \$26,999	1,383	6%	1,370	6%	1,492	6%	1,701	6%	1,622	7%	17%	6%	6%
\$27,000 to \$32,999	1,428	6%	1,384	6%	1,456	6%	1,514	6%	1,488	6%	4%	6%	6%
\$33,000 +	5,741	26%	6,003	26%	5,895	24%	6,388	24%	5,833	24%	2%	25%	24%
Unreported	6,562	29%	6,927	30%	7,084	29%	7,187	27%	5,582	23%	-15%	28%	28%
Total	22,439	100%	23,320	100%	24,248	100%	26,385	100%	24,667	100%	10%	100%	100%

Source: SDCCD Information System

Mesa College Fact Book 2012

Headcount by Disability Support Programs and Services (DSPS): On average, 3% of the Mesa College student population received disability support services between Fall 2007 and Fall 2011. This was comparable to the percentage of students served by DSPS for all colleges in the district. Moreover, the number of student who had received and had not received disability services increased 44% and 9%, respectively, from Fall 2007 to Fall 2011.

Figure 1.12. Mesa College Headcount by Disability Support Programs and Services (DSPS)

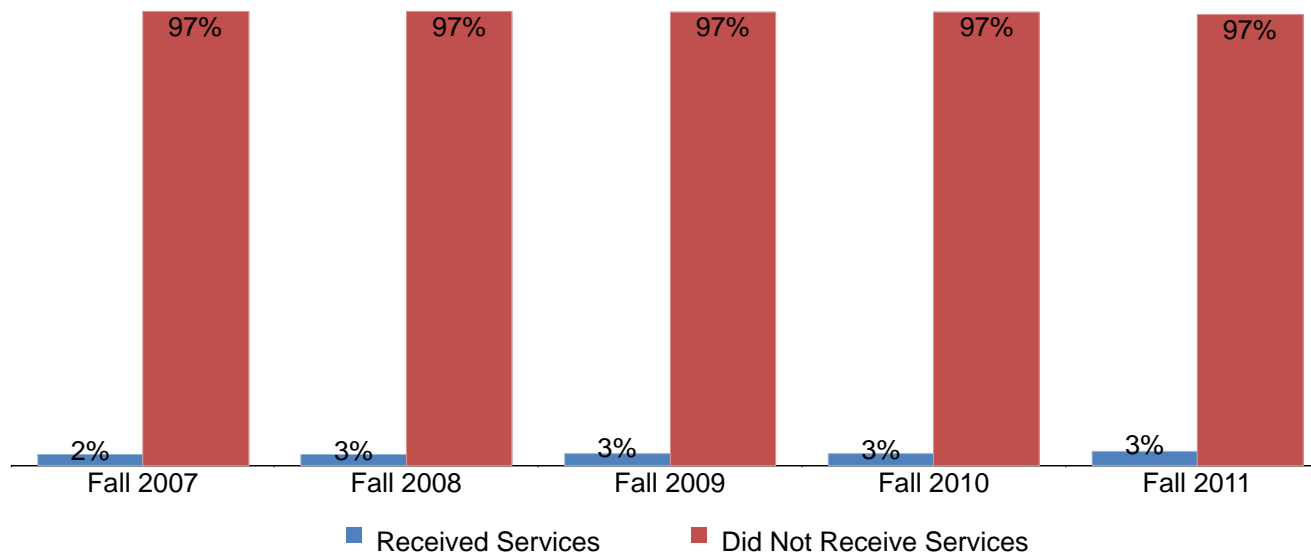


Table 1.12. Mesa College Headcount by Disability Support Programs and Services (DSPS)

	Fall 07	Fall 08	Fall 09	Fall 10	Fall 11	% Change Fall 07-11	College Average Fall 07-11	All Colleges Average Fall 07-11
Received Services	545	588	638	710	785	44%	3%	3%
Did Not Receive Services	21,874	22,725	23,610	25,675	23,882	9%	97%	97%
Unreported	20	7	0	0	0	-100%	0%	0%
Total	22,439	23,320	24,248	26,385	24,667	10%	100%	100%

Source: SDCCD Information System

Mesa College Fact Book 2012

Headcount by Extended Opportunity Programs and Services (EOPS): On average, 3% of the Mesa student population received EOPS services. This was comparable to the percentage of students served by EOPS for all colleges in the district. Furthermore, students who received EOPS services decreased 7%, while those students who had not received EOPS services increased 11% between Fall 2007 and Fall 2011.

Figure 1.13. Mesa College Headcount by Extended Opportunity Programs and Services (EOPS)

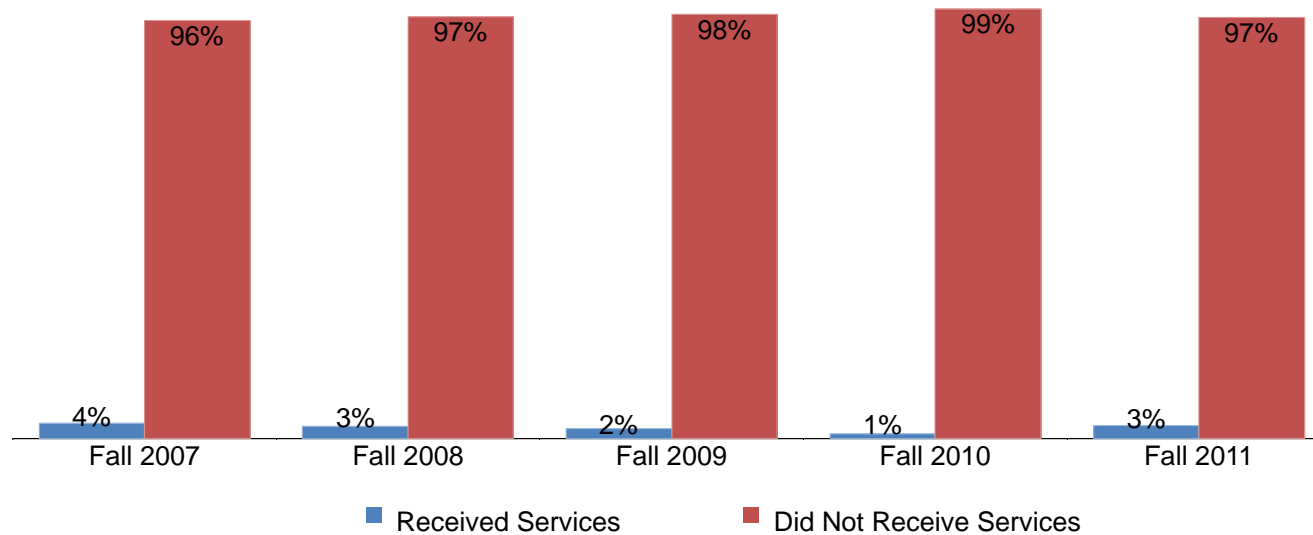


Table 1.13. Mesa College Headcount by Extended Opportunity Programs and Services (EOPS)

	Fall 07		Fall 08		Fall 09		Fall 10		Fall 11		% Change Fall 07-11	College Average Fall 07-11	All Colleges Average Fall 07-11
Received Services	797	4%	660	3%	577	2%	289	1%	745	3%	-7%	3%	3%
Did Not Receive Services	21,622	96%	22,653	97%	23,671	98%	26,096	99%	23,922	97%	11%	97%	97%
Unreported	20	0%	7	0%	0	0%	0	0%	0	0%	-100%	0%	0%
Total	22,439	100%	23,320	100%	24,248	100%	26,385	100%	24,667	100%	10%	100%	100%

Source: SDCCD Information System

Mesa College Fact Book 2012

Headcount by Day, Evening, & Online Status: On average, nearly half of Mesa College student population (46%) takes day courses exclusively. Approximately one in five students (18%) takes day/evening courses. Students that take evening courses exclusively decreased 10%. In contrast, students that take both on-campus and online courses as well as online courses exclusively increased 57% and 56%, respectively, between Fall 2007 and Fall 2011.

Figure 1.14. Mesa College Headcount by Day, Evening, & Online Status

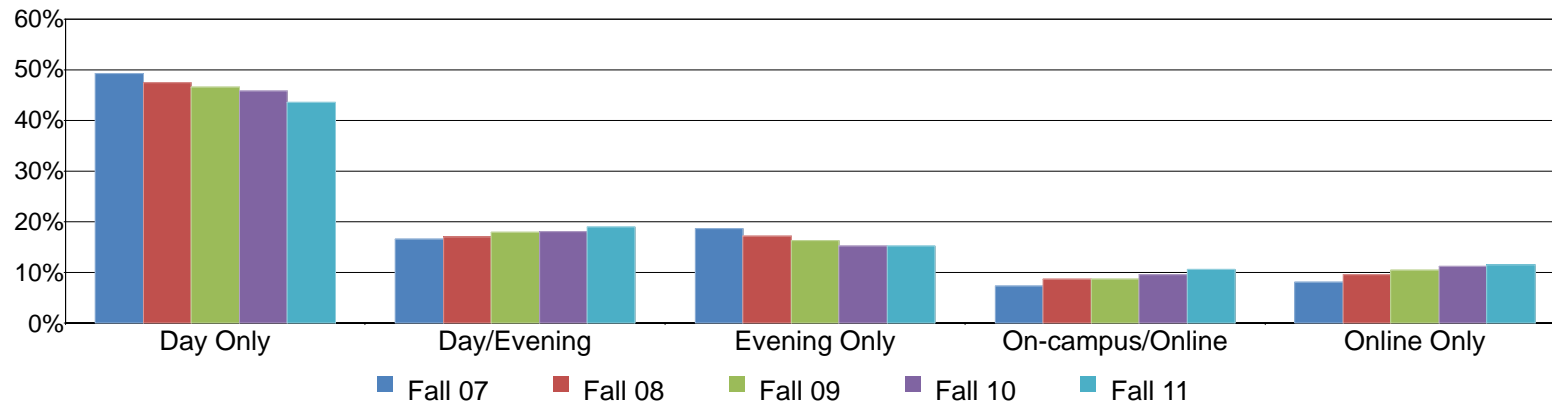


Table 1.14. Mesa College Headcount by Day, Evening, & Online Status

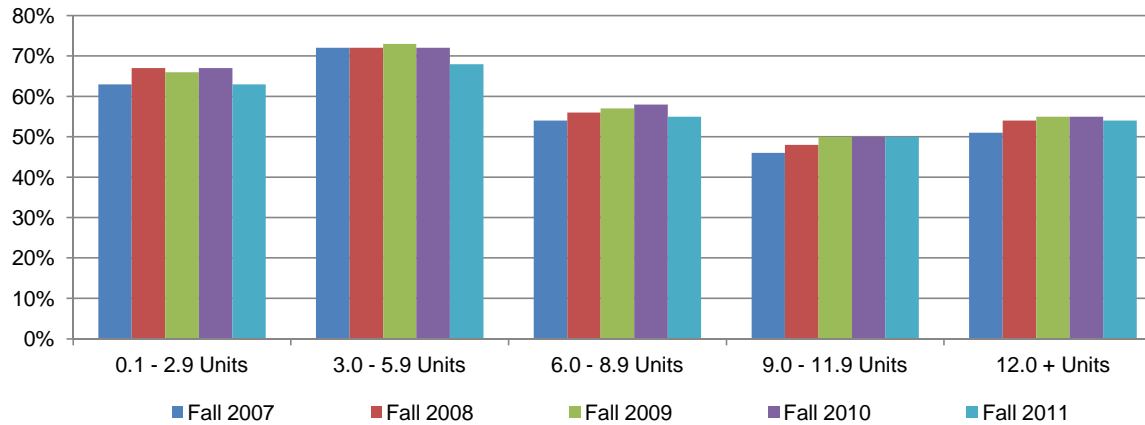
	Fall 07		Fall 08		Fall 09		Fall 10		Fall 11		% Change Fall 07-11	College Average Fall 07-11	All Colleges Average Fall 07-11
Day Only	11,058	49%	11,058	47%	11,309	47%	12,081	46%	10,768	44%	-3%	46%	42%
Day/Evening	3,714	17%	3,971	17%	4,362	18%	4,786	18%	4,678	19%	26%	18%	20%
Evening Only	4,178	19%	4,013	17%	3,935	16%	4,020	15%	3,763	15%	-10%	16%	16%
On-campus/Online	1,659	7%	2,036	9%	2,097	9%	2,545	10%	2,607	11%	57%	9%	14%
Online Only	1,830	8%	2,242	10%	2,545	10%	2,953	11%	2,851	12%	56%	10%	8%
Total	22,439	100%	23,320	100%	24,248	100%	26,385	100%	24,667	100%	10%	100%	100%

Source: SDCCD Information System

Mesa College Fact Book 2012

Headcount by Units Attempted by Units Earned: Table 1.15 shows the interplay between units attempted (in rows) and units earned (in columns). The greatest proportion of students who earned all of their units attempted were those in the 3.0-5.9 unit range on average (71%). The smallest proportion of students who earned all of their units attempted were those in the 9.0-11.9 unit range on average (49%). The number of students who attempted and earned 9.0-11.9 units increased 44%, while students who attempted and earned between 0.1 and 2.9 units decreased 8% between Fall 2007 and Fall 2011.

Figure 1.15. Mesa College Headcount by Units Attempted by Units Earned



Mesa College Fact Book 2012

Table 1.15. Mesa College Headcount by Units Attempted by Units Earned

		Units Earned						
		0 Units	0.1 - 2.9 Units	3.0 - 5.9 Units	6.0 - 8.9 Units	9.0 - 11.9 Units	12.0 + Units	
Units Attempted	Fall 2007	0.1 - 2.9 Units	37%	63%				
		3.0 - 5.9 Units	26%	1%	72%			
		6.0 - 8.9 Units	21%	2%	23%	54%		
		9.0 - 11.9 Units	16%	1%	15%	22%	46%	
		12.0 + Units	8%	1%	8%	12%	20%	51%
Fall 2008	0.1 - 2.9 Units	33%	67%					
	3.0 - 5.9 Units	27%	1%	72%				
	6.0 - 8.9 Units	19%	2%	23%	56%			
	9.0 - 11.9 Units	15%	2%	15%	20%	48%		
	12.0 + Units	8%	1%	8%	12%	19%	54%	
Fall 2009	0.1 - 2.9 Units	34%	66%					
	3.0 - 5.9 Units	26%	1%	73%				
	6.0 - 8.9 Units	19%	2%	23%	57%			
	9.0 - 11.9 Units	14%	1%	14%	21%	50%		
	12.0 + Units	7%	1%	7%	12%	18%	55%	
Fall 2010	0.1 - 2.9 Units	33%	67%					
	3.0 - 5.9 Units	27%	2%	72%				
	6.0 - 8.9 Units	19%	2%	21%	58%			
	9.0 - 11.9 Units	15%	2%	13%	20%	50%		
	12.0 + Units	8%	1%	7%	11%	18%	55%	
Fall 2011	0.1 - 2.9 Units	37%	63%					
	3.0 - 5.9 Units	31%	2%	68%				
	6.0 - 8.9 Units	20%	2%	23%	55%			
	9.0 - 11.9 Units	14%	1%	14%	20%	50%		
	12.0 + Units	8%	1%	7%	12%	18%	54%	
% Change Fall 07-11		--	-8%	-6%	24%	44%	14%	
College Average Fall 07-11		--	65%	71%	56%	49%	54%	

Source: SDCCD Information System

Note. Percent change and average were based on counts.

Section II
Term Persistence Rates

Mesa College Fact Book 2012

This section of the Fact Book contains information on first-time to college student term persistence rates. For purposes of this report, term persistence rate is the measure of first-time to college students who were enrolled in a fall term as of census (eliminating drops and never attends prior to census) and who completed the term with a grade of A, B, C, P (Pass), D, F, I, NP (Not-Pass), or RD (Report Delayed), then were enrolled as of census in the subsequent spring term and received a grade notation for that term. Note that SDSU and UCSD students are excluded from analyses. The information in this section includes five years of data and is reported as follows:

- 1) Overall
- 2) Gender
- 3) Ethnicity
- 4) Age

Mesa College Fact Book 2012

Overall Term Persistence: Over the past five fall terms, an average of 70% of first-time students persisted to the subsequent spring term. A slightly lower percentage than the average term persistence rate of first-time students enrolled in all colleges in the district (72%). Furthermore, Mesa first-time student persistence rates increased 9% from the Fall 2007 cohort to the Fall 2011 cohort.

Figure 2.1. Mesa College First-Time Student Overall Term Persistence

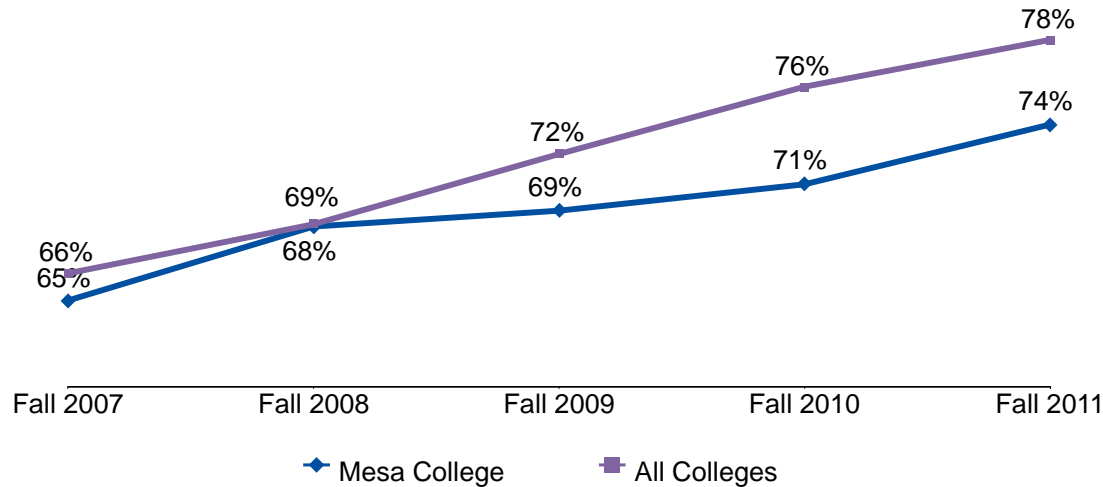


Table 2.1. Mesa College First-Time Student Overall Term Persistence

Cohort	Fall	Spring	Persistence	All Colleges Persistence Fall to Spring
Fall 2007	1,638	1,057	65%	66%
Fall 2008	1,697	1,161	68%	69%
Fall 2009	1,809	1,253	69%	72%
Fall 2010	2,219	1,568	71%	76%
Fall 2011	2,319	1,711	74%	78%
Average			70%	72%

Source: SDCCD Information System

Note. SDSU and UCSD students are excluded.

Mesa College Fact Book 2012

Term Persistence by Gender: Between the Fall 2007 and Fall 2011 cohorts, persistence rates were higher, on average, for female students (72%) than male students (68%). Persistence rates increased for both groups from the Fall 2007 cohort to the Fall 2011 cohort. In particular, increases were slightly greater for female students than male students (11% & 8%, respectively).

Figure 2.2. Mesa College First-Time Student Term Persistence by Gender

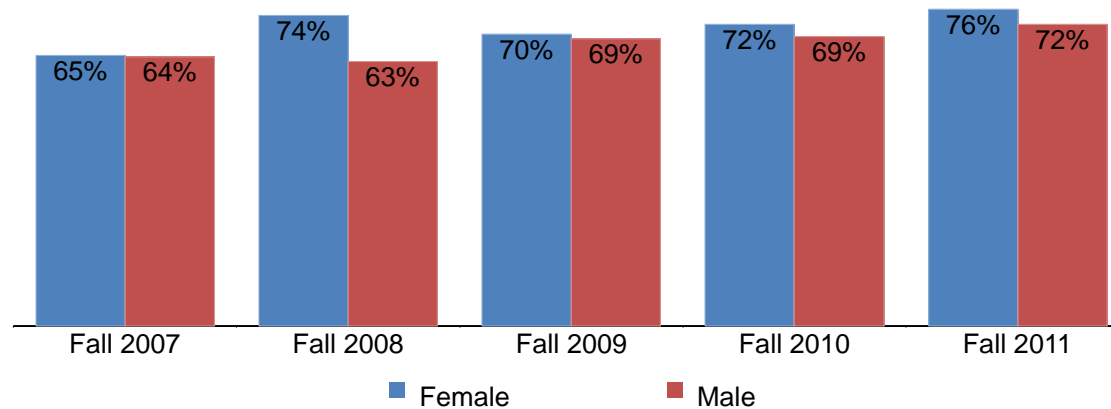


Table 2.2. Mesa College First-Time Student Term Persistence by Gender

Cohort	Female			Male		
	Fall	Spring	Persistence	Fall	Spring	Persistence
Fall 2007	803	520	65%	835	537	64%
Fall 2008	799	594	74%	897	567	63%
Fall 2009	851	594	70%	958	659	69%
Fall 2010	1,056	763	72%	1,163	805	69%
Fall 2011	1,034	783	76%	1,285	928	72%
Average			72%			68%

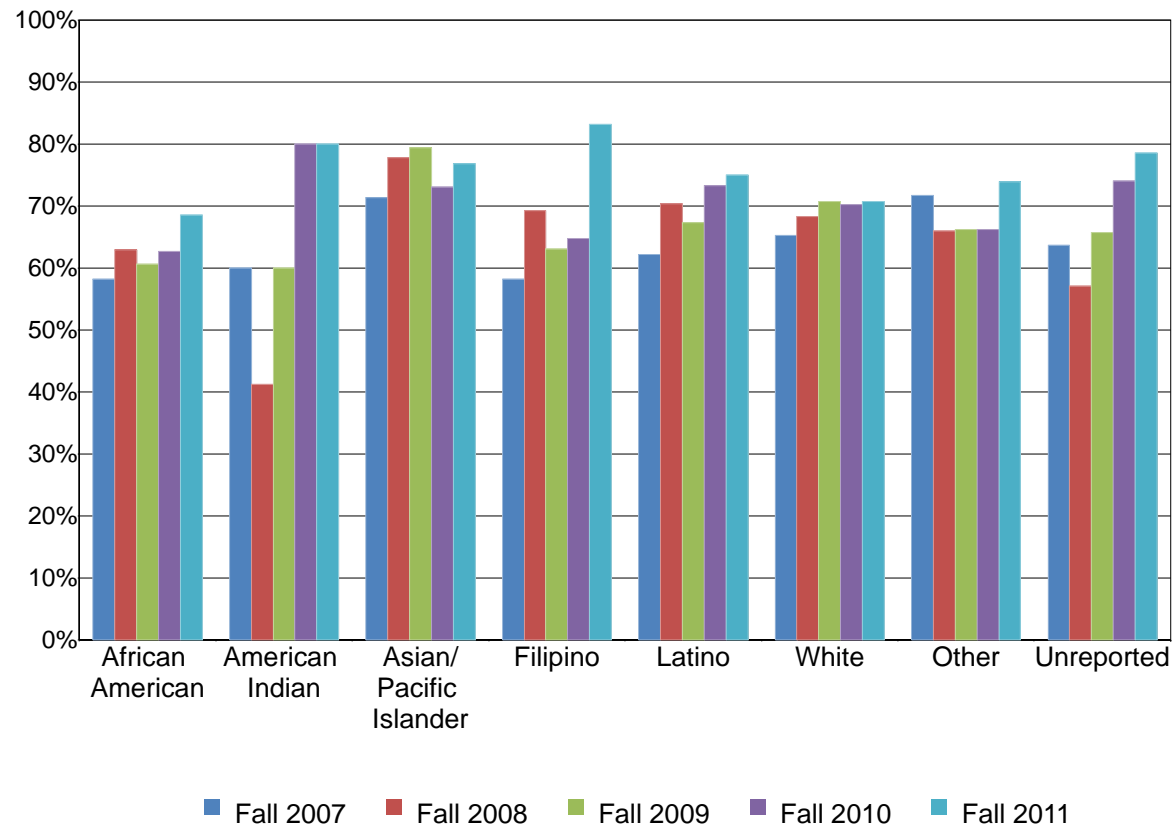
Source: SDCCD Information System

Note. SDSU and UCSD students are excluded.

Mesa College Fact Book 2012

Term Persistence by Ethnicity: The ethnic groups with the highest term persistence rates, on average, were Asian/Pacific Islander students (76%), Latino students (71%), and students categorized as 'Other' ethnicities (70%). From the Fall 2007 cohort to the Fall 2011 cohort, persistence rates increased for all ethnic groups. Specifically, Filipino and American Indian students saw the greatest increases in persistence rates (25% & 20%, respectively).

Figure 2.3. Mesa College First-Time Student Term Persistence by Ethnicity



Mesa College Fact Book 2012

Table 2.3. Mesa College First-Time Student Term Persistence by Ethnicity

Cohort	African American			American Indian			Asian/Pacific Islander			Filipino		
	Fall	Spring	Persistence	Fall	Spring	Persistence	Fall	Spring	Persistence	Fall	Spring	Persistence
Fall 2007	134	78	58%	15	9	60%	220	157	71%	67	39	58%
Fall 2008	108	68	63%	17	7	41%	203	158	78%	78	54	69%
Fall 2009	160	97	61%	10	6	60%	247	196	79%	73	46	63%
Fall 2010	174	109	63%	10	8	80%	234	171	73%	88	57	65%
Fall 2011	143	98	69%	10	8	80%	264	203	77%	89	74	83%
Average			63%			61%			76%			68%

Cohort	Latino			White			Other			Unreported		
	Fall	Spring	Persistence	Fall	Spring	Persistence	Fall	Spring	Persistence	Fall	Spring	Persistence
Fall 2007	394	245	62%	645	421	65%	53	38	72%	110	70	64%
Fall 2008	408	287	70%	703	480	68%	47	31	66%	133	76	57%
Fall 2009	490	330	67%	650	460	71%	74	49	66%	105	69	66%
Fall 2010	804	589	73%	743	522	70%	139	92	66%	27	20	74%
Fall 2011	881	661	75%	720	509	71%	184	136	74%	28	22	79%
Average			71%			69%			70%			64%

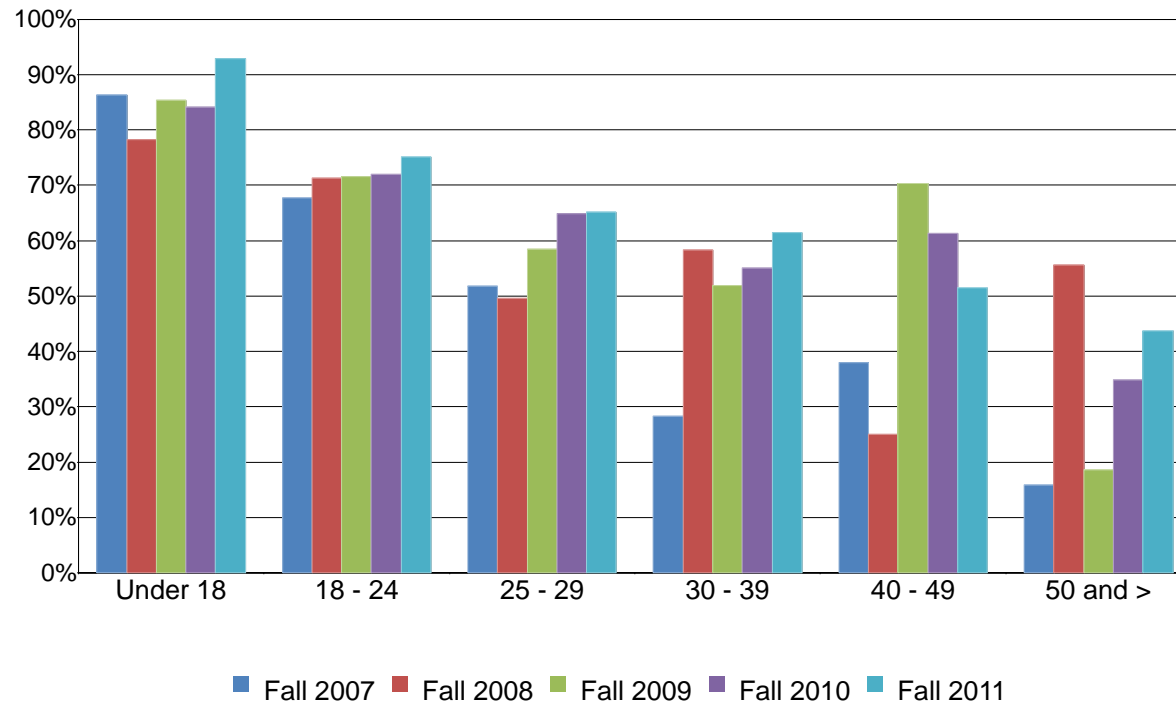
Source: SDCCD Information System

Note. SDSU and UCSD students are excluded.

Mesa College Fact Book 2012

Term Persistence by Age: A general trend showed as persistence rates decreased, age increased. Term persistence rates were greatest, on average, for students under 18 years of age and between 18 and 24 years of age (86% & 72%, respectively). Moreover, persistence rates increased for all age groups between the Fall 2007 and Fall 2011 cohorts. Students age 30 to 39 showed the greatest improvement in persistence rates (33%), followed by students age 50 years and over (28%).

Figure 2.4. Mesa College First-Time Student Term Persistence by Age



Mesa College Fact Book 2012

Table 2.4. Mesa College First-Time Student Term Persistence by Age

Cohort	Under 18			18 - 24			25 - 29		
	Fall	Spring	Persistence	Fall	Spring	Persistence	Fall	Spring	Persistence
Fall 2007	22	19	86%	1,421	962	68%	87	45	52%
Fall 2008	23	18	78%	1,434	1,023	71%	113	56	50%
Fall 2009	48	41	85%	1,491	1,067	72%	137	80	58%
Fall 2010	44	37	84%	1,910	1,375	72%	131	85	65%
Fall 2011	42	39	93%	2,004	1,505	75%	152	99	65%
Average			86%			72%			59%

Cohort	30 - 39			40 - 49			50 and >		
	Fall	Spring	Persistence	Fall	Spring	Persistence	Fall	Spring	Persistence
Fall 2007	60	17	28%	29	11	38%	19	3	16%
Fall 2008	72	42	58%	28	7	25%	27	15	56%
Fall 2009	79	41	52%	27	19	70%	27	5	19%
Fall 2010	80	44	55%	31	19	61%	23	8	35%
Fall 2011	70	43	61%	35	18	51%	16	7	44%
Average			52%			49%			34%

Source: SDCCD Information System

Note. SDSU and UCSD students are excluded.

Section III
Student Outcomes

Mesa College Fact Book 2012

This section of the Fact Book contains information on various student outcomes which may be considered indirect assessments of student learning. The outcomes included in this section are: 1) Annual Successful Course Completion Rates, 2) Annual Retention Rates, 3) Annual GPA, 4) Annual Awards Conferred, and 5) Annual Transfer Volume. All of the information in this section includes five years of data by gender, age, and ethnicity. The following describes in detail each of the outcomes listed.

- 1) Successful Course Completion Rates. The first outcome reported in this section is successful course completion, or student success rate. For purposes of this report, the success rate is the percentage of students who completed a course with a grade of A, B, C, or P out of total enrollments as of census. *Note: Tutoring, non-credit, and cancelled classes are excluded.*
- 2) Retention Rates. The second outcome reported in this section is retention rate. For purposes of this report, the retention rate is the percentage of students who completed a course with a grade of A, B, C, D, F, P, NP, I, or RD out of total enrollments as of census. *Note: Tutoring and cancelled classes are excluded.*
- 3) Annual GPA. The third outcome reported in this section is annual GPA. For purposes of this report, the annual GPA is the cumulative term grade point average of all courses taken for a grade in one academic year.
- 4) Annual Awards Conferred. The fourth outcome reported in this section is the annual awards conferred. For purposes of this report, the annual awards conferred are the total number of associate degrees and certificates awarded in a single academic year (summer, fall, and spring). *Note: Annual awards conferred that are reported in this Fact Book are considered preliminary data. Please see the upcoming Awards Conferred Supplement report for final annual awards conferred numbers.*
- 5) Annual Transfer Volume. The last outcome reported in this section is the number of students who transfer annually. For the purposes of this report, the annual transfer volume represents the total number of students who transferred to a 4-year institution and were enrolled at an SDCCD college at any time within three semesters prior to transferring (including stop outs). The student must also have completed 12 or more transferrable units within six years prior to transferring to a 4-year institution. *Note: Transfer volume that is reported in this Fact Book is considered preliminary data. Please see the upcoming Spring 2013 SDCCD Transfer Report: A Longitudinal Perspective for final transfer volume numbers.*

Mesa College Fact Book 2012

Overall Success Rates: Mesa College annual success rates increased slightly from 2007/08 to 2011/12, with a five-year average of 67%. This success rate average was comparable to the success rate average of all colleges in the district (67%). The Mesa College annual success rates were somewhat higher, on average, compared to the annual success rates of all colleges in the district between 2007/08 and 2010/11.

Figure 3.1. Mesa College Overall Success Rates

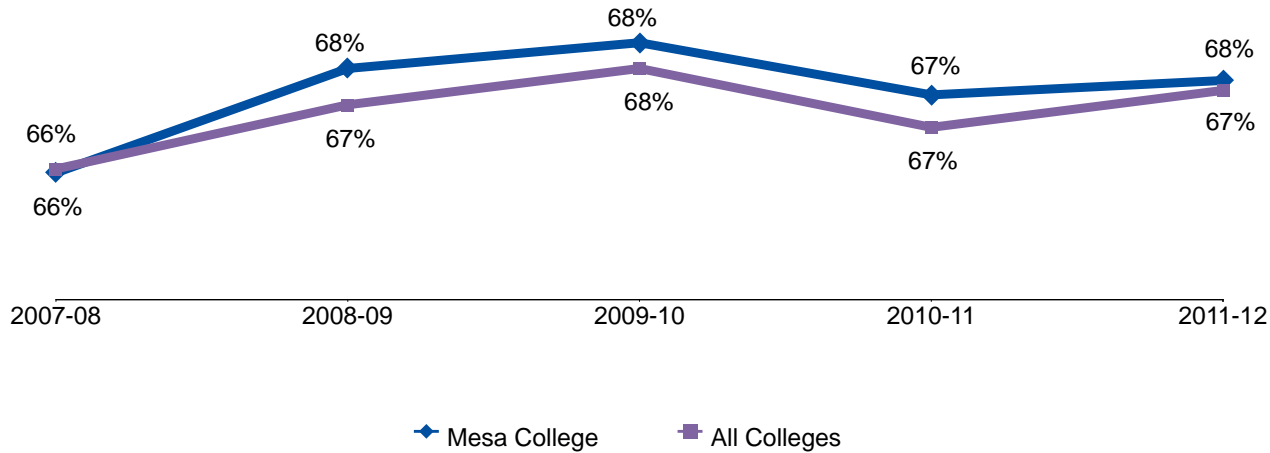


Table 3.1. Mesa College Overall Success Rates

	2007-08	2008-09	2009-10	2010-11	2011-12	% Change 07/08 - 11/12	College Average 07/08 - 11/12	All Colleges Average 07/08 - 11/12
Average	66%	68%	68%	67%	68%	2%	67%	67%

Source: SDCCD Information System

Note. Tutoring, non-credit, and cancelled classes are excluded.

Mesa College Fact Book 2012

Success Rates by Gender: On average, female students had higher success rates (69%) than their male student counterpart (66%). At Mesa College, both male and female student average success rates were comparable to the average success rates of the males and female population of all colleges in the district (67% & 68%, respectively). Female students at Mesa College had an average success rate higher than the average success rates of both the general student populations for Mesa and all colleges in the district (67% each). Male students at Mesa College average success rate was comparable to the same averages.

Figure 3.2. Mesa College Success Rates by Gender

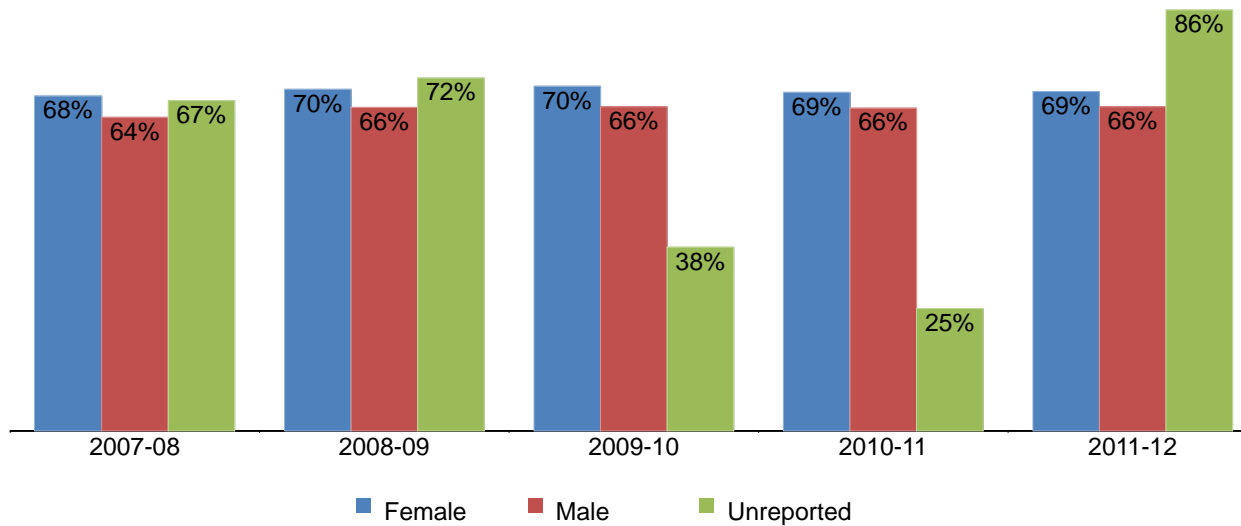


Table 3.2. Mesa College Success Rates by Gender

	2007-08	2008-09	2009-10	2010-11	2011-12	% Change 07/08 - 11/12	College Average 07/08 - 11/12	All Colleges Average 07/08 - 11/12
Female	68%	70%	70%	69%	69%	1%	69%	68%
Male	64%	66%	66%	66%	66%	2%	66%	67%
Unreported	67%	72%	38%	25%	86%	19%	65%	77%
Average	66%	68%	68%	67%	68%	2%	67%	67%

Source: SDCCD Information System

Note. Tutoring, non-credit, and cancelled classes are excluded.

Mesa College Fact Book 2012

Success Rates by Ethnicity: On average, the ethnic groups with the highest success rates between 2007/08 and 2011/12 were Asian/Pacific Islander students (72%), White students (71%), and Filipino students (68%). The average success rates of African American (56%), American Indian (64%), and Latino students (62%) were lower compared to the average success rates of both the general student populations of Mesa College and all colleges in the district (67% each). The average success rates of Asian/Pacific Islander, White, and Filipino students exceeded the same averages.

Figure 3.3. Mesa College Success Rates by Ethnicity

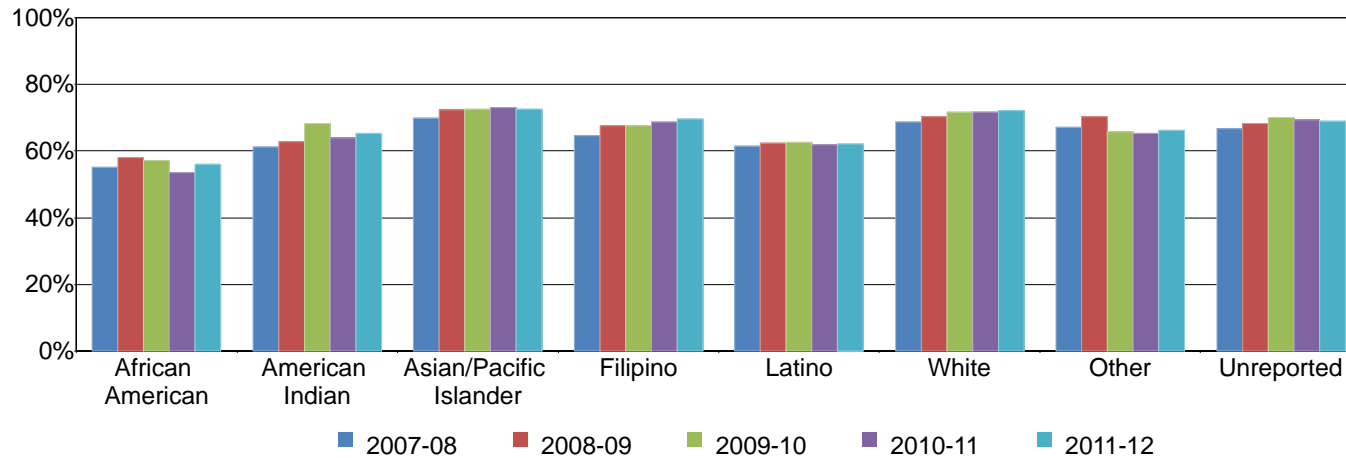


Table 3.3. Mesa College Success Rates by Ethnicity

	2007-08	2008-09	2009-10	2010-11	2011-12	% Change 07/08 - 11/12	College Average 07/08 - 11/12	All Colleges Average 07/08 - 11/12
African American	55%	58%	57%	54%	56%	1%	56%	55%
American Indian	61%	63%	68%	64%	65%	4%	64%	65%
Asian/Pacific Islander	70%	72%	73%	73%	73%	3%	72%	72%
Filipino	65%	68%	68%	69%	70%	5%	68%	68%
Latino	62%	62%	63%	62%	62%	1%	62%	62%
White	69%	70%	72%	72%	72%	4%	71%	72%
Other	67%	70%	66%	65%	66%	-1%	67%	66%
Unreported	67%	68%	70%	69%	69%	2%	69%	69%
Average	66%	68%	68%	67%	68%	2%	67%	67%

Source: SDCCD Information System

Note. Tutoring, non-credit, and cancelled classes are excluded.

Mesa College Fact Book 2012

Success Rates by Age: With the exception of students who were under age 18, a general trend between 2007/08 and 2011/12 showed as age increase so did the average success rates. Students under age 18 had the highest success rate in average (88%). With the exception of students ages 18-24, the average success rates of all other age groups were higher than the average success rates of both the general student populations at Mesa College and all colleges in the district (67%).

Figure 3.4. Mesa College Success Rates by Age

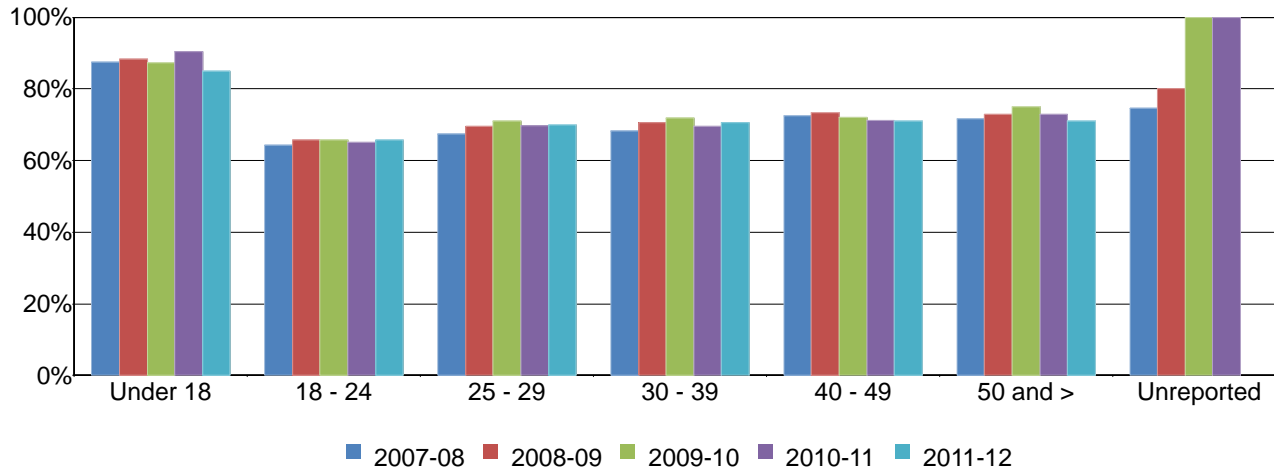


Table 3.4. Mesa College Success Rates by Age

	2007-08	2008-09	2009-10	2010-11	2011-12	% Change 07/08 - 11/12	College Average 07/08 - 11/12	All Colleges Average 07/08 - 11/12
Under 18	88%	88%	87%	90%	85%	-3%	88%	85%
18 - 24	64%	66%	66%	65%	66%	2%	65%	64%
25 - 29	67%	70%	71%	70%	70%	3%	70%	69%
30 - 39	68%	71%	72%	70%	71%	2%	70%	71%
40 - 49	73%	73%	72%	71%	71%	-2%	72%	73%
50 and >	72%	73%	75%	73%	71%	-1%	73%	73%
Unreported	75%	80%	100%	100%	---	---	78%	81%
Average	66%	68%	68%	67%	68%	2%	67%	67%

Source: SDCCD Information System

Note. Tutoring, non-credit, and cancelled classes are excluded.

Mesa College Fact Book 2012

Overall Retention Rates: Mesa College’s annual retention rates increased 3% from 2007/08 to 2011/12, with an average of 83%. This retention rate average was slightly lower than the retention rate average of all colleges in the district (84%). The Mesa College annual retention rates were lower, on average, compared to the annual retention rates of all colleges in the district between 2007/08 and 2011/12.

Figure 3.5. Mesa College Overall Retention Rates

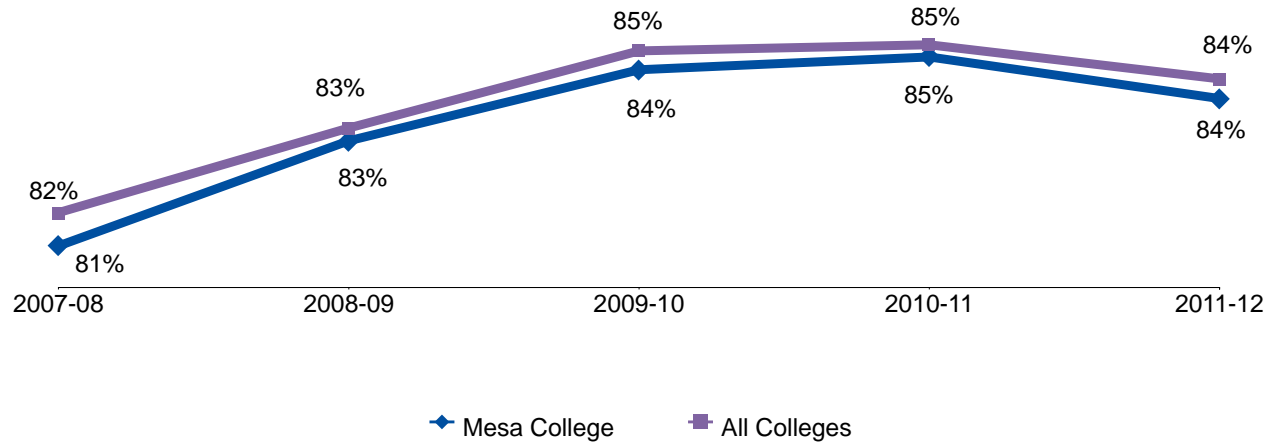


Table 3.5. Mesa College Overall Retention Rates

	2007-08	2008-09	2009-10	2010-11	2011-12	% Change 07/08 - 11/12	College Average 07/08 - 11/12	All Colleges Average 07/08 - 11/12
Average	81%	83%	84%	85%	84%	3%	83%	84%

Source: SDCCD Information System

Note. Tutoring and cancelled classes are excluded.

Mesa College Fact Book 2012

Retention Rates by Gender: From 2007/08 to 2011/12, average retention rates for both female and male students were similar to one another (84% & 83%, respectively). The average retention rates of both male and female students at Mesa College were comparable to the average retention rates of the male and female student population of all colleges in the district (84% each). Furthermore, both male and female students at Mesa College have average retention rates comparable to the average retention rates of both the general student populations at Mesa College and all colleges in the district (84% & 84%, respectively) between 2007/08 and 2011/12.

Figure 3.6. Mesa College Retention Rates by Gender

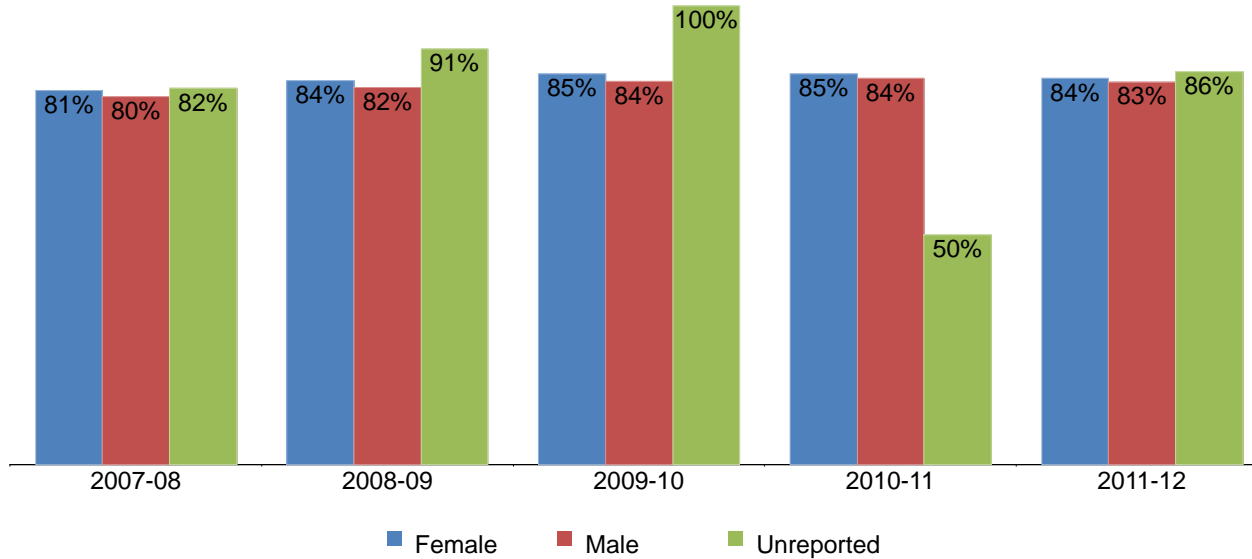


Table 3.6. Mesa College Retention Rates by Gender

	2007-08	2008-09	2009-10	2010-11	2011-12	% Change 07/08 - 11/12	College Average 07/08 - 11/12	All Colleges Average 07/08 - 11/12
Female	81%	84%	85%	85%	84%	3%	84%	84%
Male	80%	82%	84%	84%	83%	3%	83%	84%
Unreported	82%	91%	100%	50%	86%	4%	84%	89%
Average	81%	83%	84%	85%	84%	3%	83%	84%

Source: SDCCD Information System

Note. Tutoring and cancelled classes are excluded.

Mesa College Fact Book 2012

Retention Rates by Ethnicity: The ethnic groups with the highest retention rates, on average, were Asian/Pacific Islander students (86%), Filipino students (84%), White students (84%), and students categorized as 'Other' ethnicities (84%). The average retention rates of African American (80%), American Indian (80%), and Latino students (82%) were lower than the average retention rates of both the general student populations at Mesa College (83%) and all colleges in the district (84%). The average retention rates of Asian/Pacific Islander, Filipino, White students, and students categorized as 'Other' ethnicities exceeded the same averages.

Figure 3.7. Mesa College Retention Rates by Ethnicity

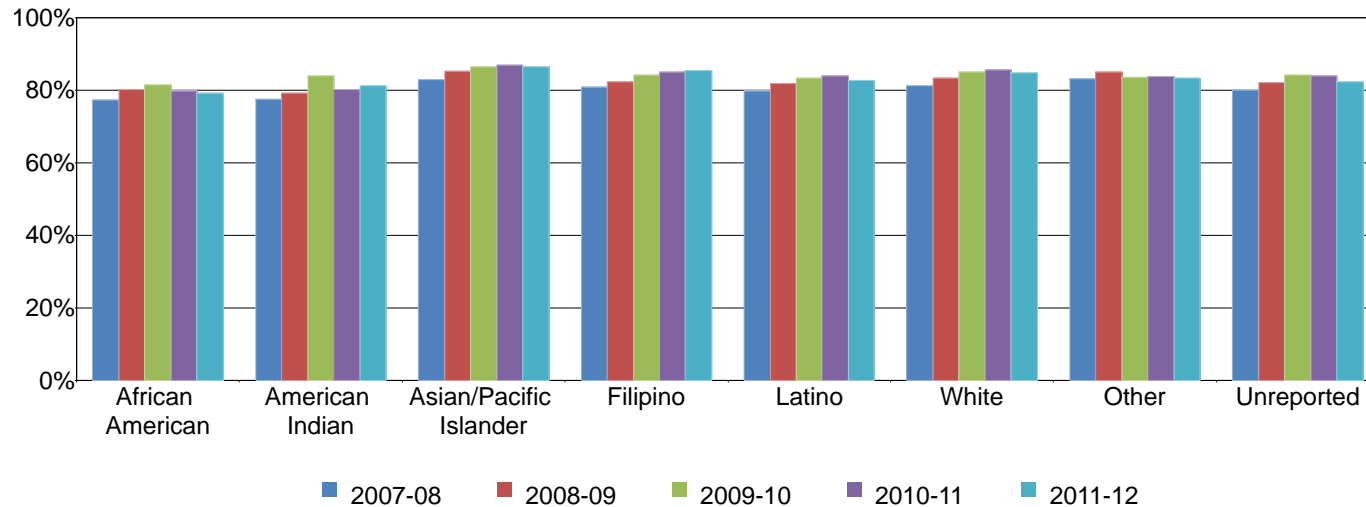


Table 3.7. Mesa College Retention Rates by Ethnicity

	2007-08	2008-09	2009-10	2010-11	2011-12	% Change 07/08 - 11/12	College Average 07/08 - 11/12	All Colleges Average 07/08 - 11/12
African American	77%	80%	81%	80%	79%	2%	80%	79%
American Indian	78%	79%	84%	80%	81%	4%	80%	81%
Asian/Pacific Islander	83%	85%	86%	87%	86%	4%	86%	86%
Filipino	81%	82%	84%	85%	85%	4%	84%	84%
Latino	80%	82%	83%	84%	83%	3%	82%	83%
White	81%	83%	85%	86%	85%	3%	84%	85%
Other	83%	85%	83%	84%	83%	0%	84%	84%
Unreported	80%	82%	84%	84%	82%	2%	82%	83%
Average	81%	83%	84%	85%	84%	3%	83%	84%

Source: SDCCD Information System

Note. Tutoring and cancelled classes are excluded.

Mesa College Fact Book 2012

Retention Rates by Age: Between 2007/08 and 2011/12, annual retention rates were greatest for students under 18 years of age (95%). For all other age groups, retention rates matched the collegewide average of 83%. With the exception of students under age 18, the average retention rates of all other age groups were comparable to or lower than the average retention rate of both the general student populations at Mesa College (83%) and all colleges in the district (84%).

Figure 3.8. Mesa College Retention Rates by Age

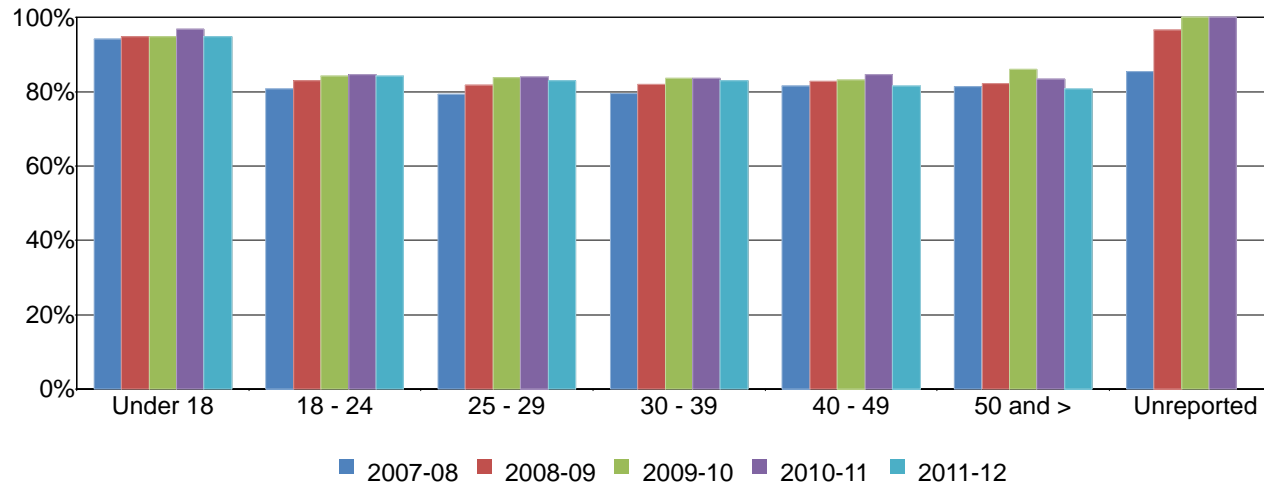


Table 3.8. Mesa College Retention Rates by Age

	2007-08	2008-09	2009-10	2010-11	2011-12	% Change 07/08 - 11/12	College Average 07/08 - 11/12	All Colleges Average 07/08 - 11/12
Under 18	94%	95%	95%	97%	95%	1%	95%	95%
18 - 24	81%	83%	84%	85%	84%	3%	83%	84%
25 - 29	79%	82%	84%	84%	83%	4%	83%	83%
30 - 39	80%	82%	84%	84%	83%	3%	83%	84%
40 - 49	81%	83%	83%	85%	82%	0%	83%	84%
50 and >	81%	82%	86%	83%	81%	-1%	83%	84%
Unreported	85%	97%	100%	100%	---	---	---	91%
Average	81%	83%	84%	85%	84%	3%	83%	84%

Source: SDCCD Information System

Note. Tutoring and cancelled classes are excluded.

Mesa College Fact Book 2012

Overall Annual GPA: The annual GPAs for Mesa College remained relatively consistent, with an average of 2.64. Mesa’s collegewide annual GPA average was comparable to the annual GPA average of all colleges in the district (2.65). The Mesa College annual GPAs were comparable, on average, to the annual GPAs of all colleges in the district between 2007/08 and 2011/12.

Figure 3.9. Mesa College Overall Annual GPA

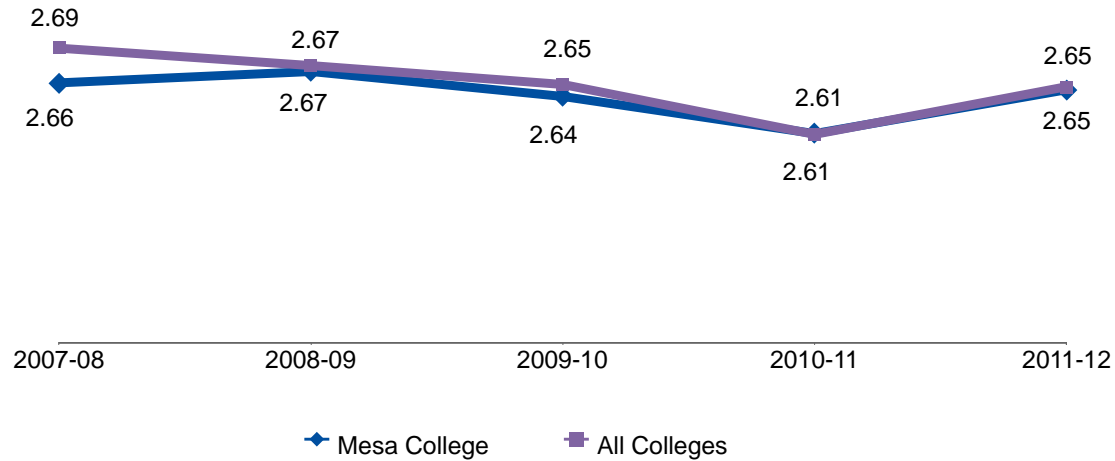


Table 3.9. Mesa College Overall Annual GPA

	2007-08	2008-09	2009-10	2010-11	2011-12	College Average 07/08 - 11/12	All Colleges Average 07/08 - 11/12
Average	2.66	2.67	2.64	2.61	2.65	2.64	2.65

Source: SDCCD Information System

Mesa College Fact Book 2012

Annual GPA by Gender: Between 2007/08 and 2011/12, female students, on average, had higher GPAs compared to their male student counterpart (2.73 & 2.55, respectively). The average annual GPA of female students at Mesa was higher than the average annual GPA of the female student population of all college in the district (2.69). However, the opposite trend was true for the male students at Mesa when compared to the male student population for all colleges in the district (2.55 & 2.61, respectively). The average annual GPA of female students at Mesa was higher than the average annual GPAs of both the student populations at Mesa (2.64) and all colleges in the district (2.65). However, the opposite trend was true for the male students at Mesa when compared to the same averages.

Figure 3.10. Mesa College Annual GPA by Gender

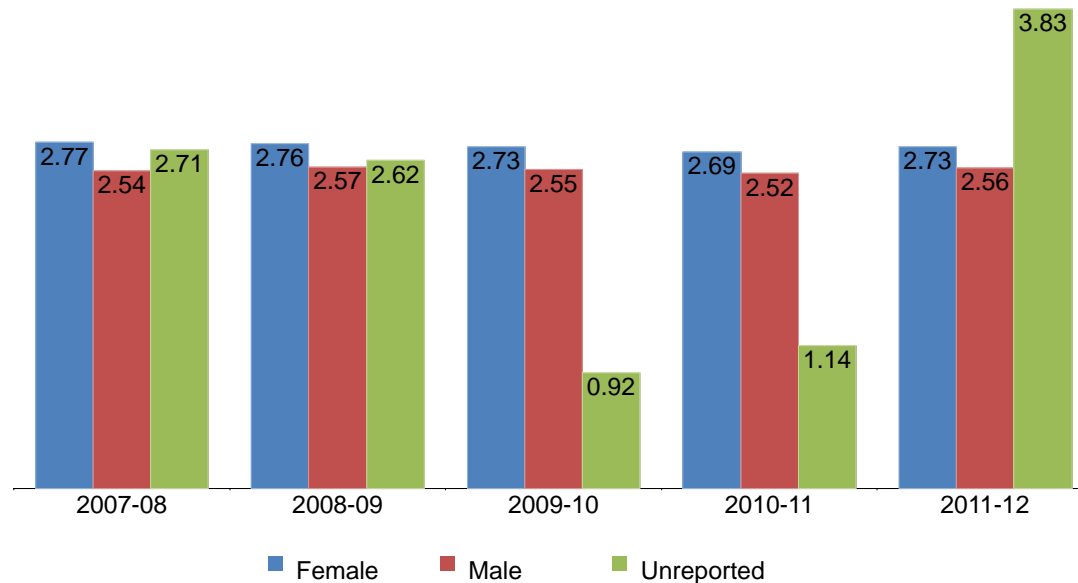


Table 3.10. Mesa College Annual GPA by Gender

	2007-08	2008-09	2009-10	2010-11	2011-12	College Average 07/08 - 11/12	All Colleges Average 07/08 - 11/12
Female	2.77	2.76	2.73	2.69	2.73	2.73	2.69
Male	2.54	2.57	2.55	2.52	2.56	2.55	2.61
Unreported	2.71	2.62	0.92	1.14	3.83	2.51	2.76
Average	2.66	2.67	2.64	2.61	2.65	2.64	2.65

Source: SDCCD Information System

Mesa College Fact Book 2012

Annual GPA by Ethnicity: Both Asian/Pacific Islander and White students had the highest GPAs (2.82 & 2.80, respectively) on average between 2007/08 and 2011/12. The average annual GPAs of African American, American Indian, Filipino, Latino students, and student categorized as 'Other' ethnicities were lower than the average annual GPAs of both the general student populations at Mesa College (2.64) and all colleges in the district (2.65). Asian/Pacific Islander and White students exceeded the same averages.

Figure 3.11. Mesa College Annual GPA by Ethnicity

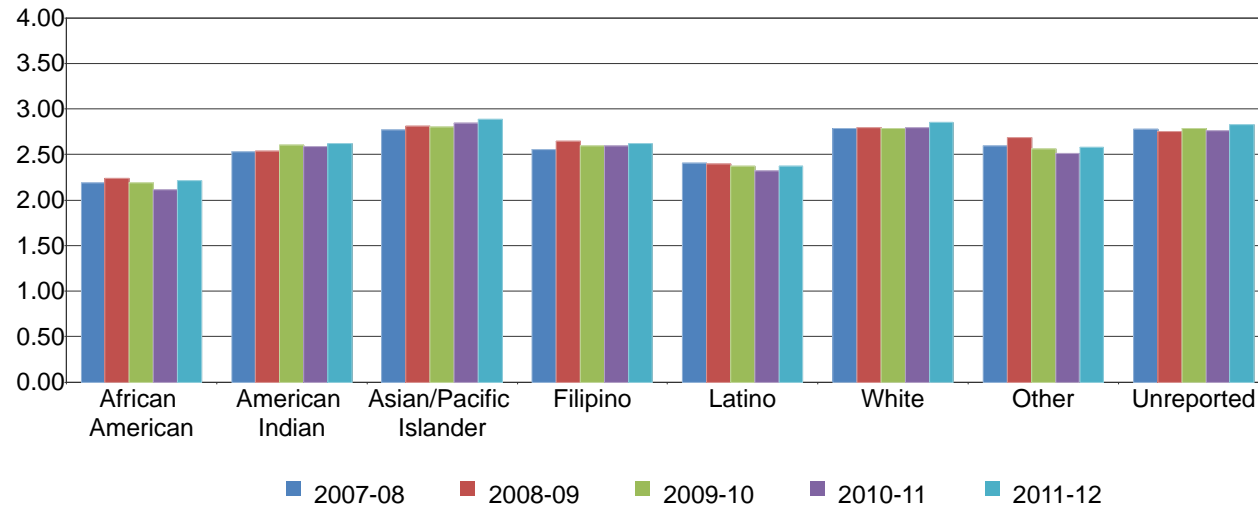


Table 3.11. Mesa College Annual GPA by Ethnicity

	2007-08	2008-09	2009-10	2010-11	2011-12	College Average 07/08 - 11/12	All Colleges Average 07/08 - 11/12
African American	2.19	2.24	2.19	2.12	2.21	2.18	2.21
American Indian	2.53	2.54	2.60	2.59	2.62	2.57	2.61
Asian/Pacific Islander	2.77	2.81	2.80	2.84	2.88	2.82	2.82
Filipino	2.55	2.64	2.60	2.59	2.62	2.60	2.62
Latino	2.41	2.40	2.37	2.32	2.37	2.37	2.41
White	2.78	2.79	2.79	2.79	2.85	2.80	2.87
Other	2.59	2.68	2.56	2.51	2.58	2.57	2.58
Unreported	2.78	2.76	2.78	2.76	2.82	2.78	2.81
Average	2.66	2.67	2.64	2.61	2.65	2.64	2.65

Source: SDCCD Information System

Mesa College Fact Book 2012

Annual GPA by Age: With the exception of students under age 18, a general trend between 2007/08 and 2011/12 showed as age increased, so did the average GPAs. The average annual GPA of students ages 18-24 (2.49) was lower than both the general student populations at Mesa College (2.64) and all colleges in the district (2.65). However, all other age groups exceeded the same averages.

Figure 3.12. Mesa College Annual GPA by Age

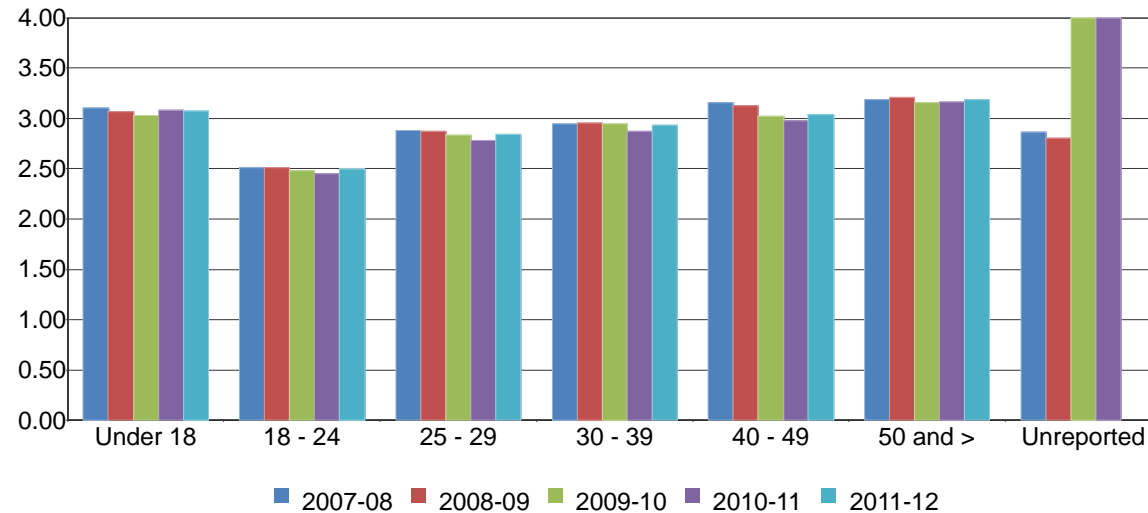


Table 3.12. Mesa College Annual GPA by Age

	2007-08	2008-09	2009-10	2010-11	2011-12	College Average 07/08 - 11/12	All Colleges Average 07/08 - 11/12
Under 18	3.10	3.07	3.03	3.08	3.07	3.07	3.02
18 - 24	2.51	2.51	2.48	2.45	2.50	2.49	2.47
25 - 29	2.88	2.87	2.84	2.78	2.85	2.84	2.85
30 - 39	2.95	2.96	2.95	2.87	2.93	2.93	2.93
40 - 49	3.16	3.12	3.02	2.98	3.03	3.06	3.01
50 and >	3.19	3.21	3.16	3.16	3.18	3.18	3.08
Unreported	2.86	2.81	4.00	4.00	---	---	3.03
Average	2.66	2.67	2.64	2.61	2.65	2.64	2.65

Source: SDCCD Information System

Mesa College Fact Book 2012

Annual Awards Conferred: On average, 75% of the total awards conferred at Mesa College were associate degrees. The number of certificates requiring 29 or fewer units showed the greatest increase over the five-year period (33%), from 106 in 2007/08 to 141 in 2011/12. In contrast, certificates requiring 60 or more units decreased 100%, from 22 in 2007/08 to 0 in 2011/12. On average, associate degrees comprised a greater percentage of awards conferred at Mesa College (75%) than all colleges in the district (66%).

Figure 3.13. Mesa College Overall Annual Awards Conferred

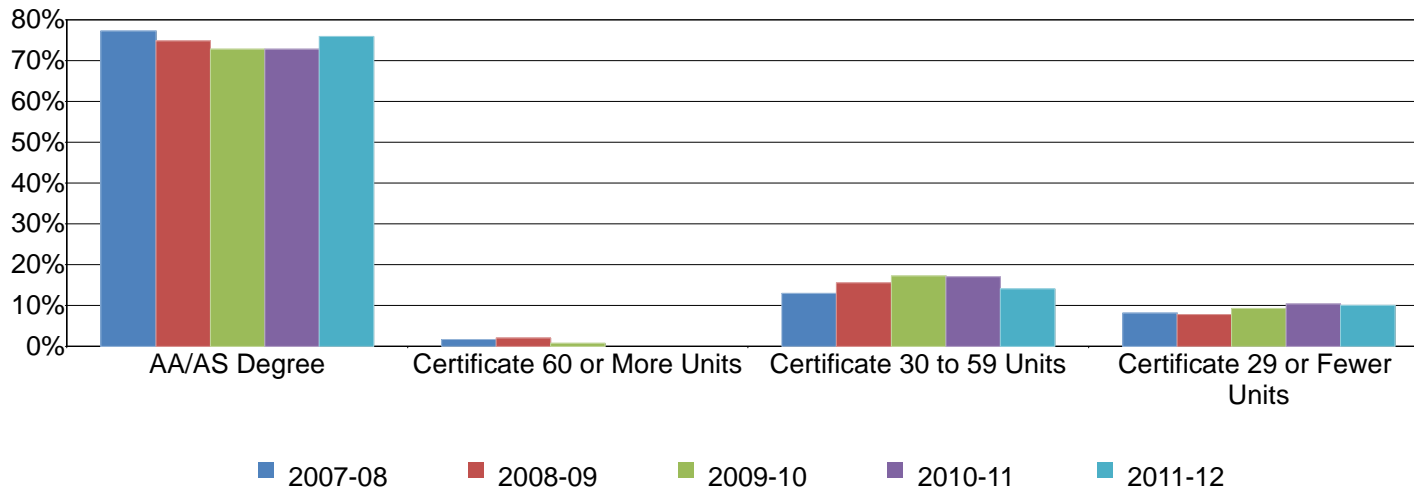


Table 3.13. Mesa College Overall Annual Awards Conferred

	2007-08		2008-09		2009-10		2010-11		2011-12		% Change 07/08-11/12	College Average 07/08-11/12	All Colleges Average 07/08-11/12
AA/AS Degree	1,005	77%	917	75%	874	73%	907	73%	1,064	76%	6%	75%	66%
Certificate 60 or More Units	22	2%	24	2%	9	1%	0	0%	0	0%	-100%	1%	0%
Certificate 30 to 59 Units	168	13%	191	16%	206	17%	211	17%	196	14%	17%	15%	17%
Certificate 29 or Fewer Units	106	8%	94	8%	112	9%	128	10%	141	10%	33%	9%	17%
Total	1,301	100%	1,226	100%	1,201	100%	1,246	100%	1,401	100%	8%	100%	100%

Source: SDCCD Information System

Mesa College Fact Book 2012

Annual Awards Conferred by Gender: On average, female students received a greater proportion of associate degrees awarded at Mesa College than their male student counterpart (56% & 44%, respectively). Between 2007/08 and 2011/12, the number of associate degrees awarded increased 15% for male students, while it decreased by 1% for female students. The number of certificates requiring 30 to 59 units also increased for male students (64%), however decreased slightly for female students (3%). From 2007/08 to 2011/12, male students consistently earned a disproportionately low number of certificates at Mesa College compared to the male student population at all colleges in the district. Female students exhibited the opposite pattern.

Figure 3.14.1. Mesa College Annual AA/AS Degrees by Gender

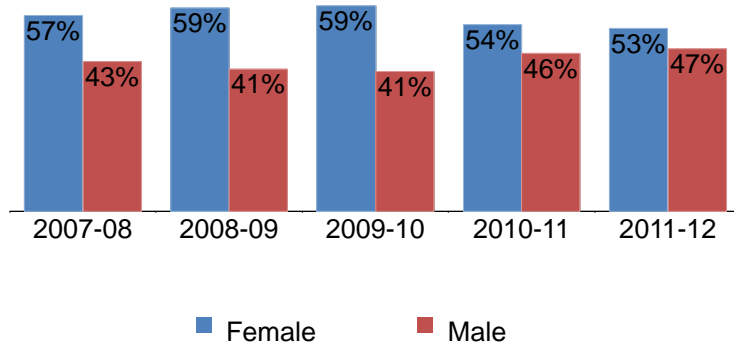


Figure 3.14.2. Mesa College Annual Certificates 60 or More Units by Gender

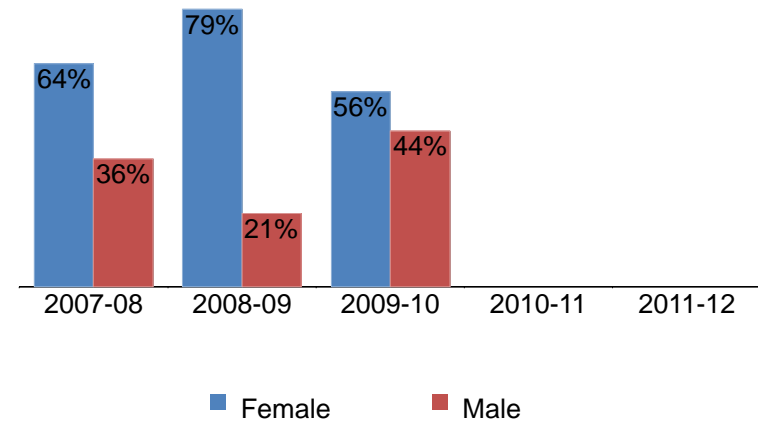


Figure 3.14.3. Mesa College Annual Certificates 30 to 59 Units by Gender

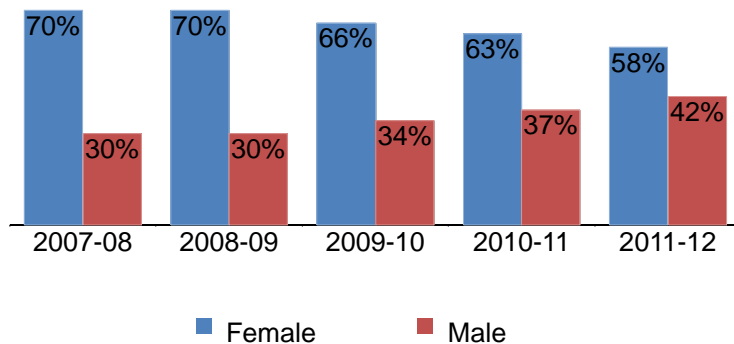
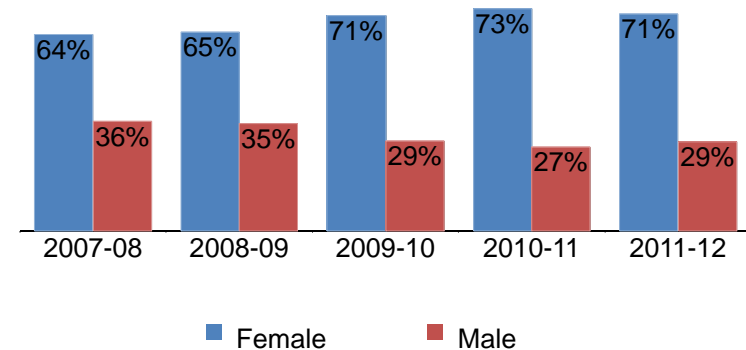


Figure 3.14.4. Mesa College Annual Certificates 29 or Fewer Units by Gender



Mesa College Fact Book 2012

Table 3.14. Mesa College Annual Awards Conferred by Gender

		2007-08		2008-09		2009-10		2010-11		2011-12		% Change 07/08-11/12	College Average 07/08-11/12	All Colleges Average 07/08-11/12
AA/AS Degree	Female	570	57%	540	59%	520	59%	491	54%	564	53%	-1%	56%	56%
	Male	435	43%	377	41%	354	41%	416	46%	500	47%	15%	44%	44%
	Total	1,005	100%	917	100%	874	100%	907	100%	1,064	100%	6%	100%	100%
Certificate 60 or More Units	Female	14	64%	19	79%	5	56%	0	0%	0	0%	-100%	69%	51%
	Male	8	36%	5	21%	4	44%	0	0%	0	0%	-100%	31%	49%
	Total	22	100%	24	100%	9	100%	0	0%	0	0%	-100%	100%	100%
Certificate 30 to 59 Units	Female	118	70%	134	70%	136	66%	132	63%	114	58%	-3%	65%	51%
	Male	50	30%	57	30%	70	34%	79	37%	82	42%	64%	35%	49%
	Total	168	100%	191	100%	206	100%	211	100%	196	100%	17%	100%	100%
Certificate 29 or Fewer Units	Female	68	64%	61	65%	79	71%	93	73%	100	71%	47%	69%	43%
	Male	38	36%	33	35%	33	29%	35	27%	41	29%	8%	31%	57%
	Total	106	100%	94	100%	112	100%	128	100%	141	100%	33%	100%	100%
Grand Total		1,301	100%	1,226	100%	1,201	100%	1,246	100%	1,401	100%	8%	100%	100%

Source: SDCCD Information System

Mesa College Fact Book 2012

Annual Awards Conferred by Ethnicity: The number of associate degrees conferred at Mesa College increased for most ethnic groups between 2007/08 and 2011/12. During the same time period, White students received the greatest number of awards conferred, followed by Latino students, and Asian/Pacific Islander students. These trends reflect the fact that these three ethnic groups (White, Latino, & Asian/Pacific Islander students) constitute the greatest proportions of the student population at Mesa College. Latino students at Mesa College were slightly underrepresented across most award categories when compared to the ethnic population of all colleges in the district, while White and Asian/Pacific Islander students were overrepresented when compared to the same ethnic student populations of all colleges in the district.

Figure 3.15.1. Mesa College Annual AA/AS Degrees by Ethnicity

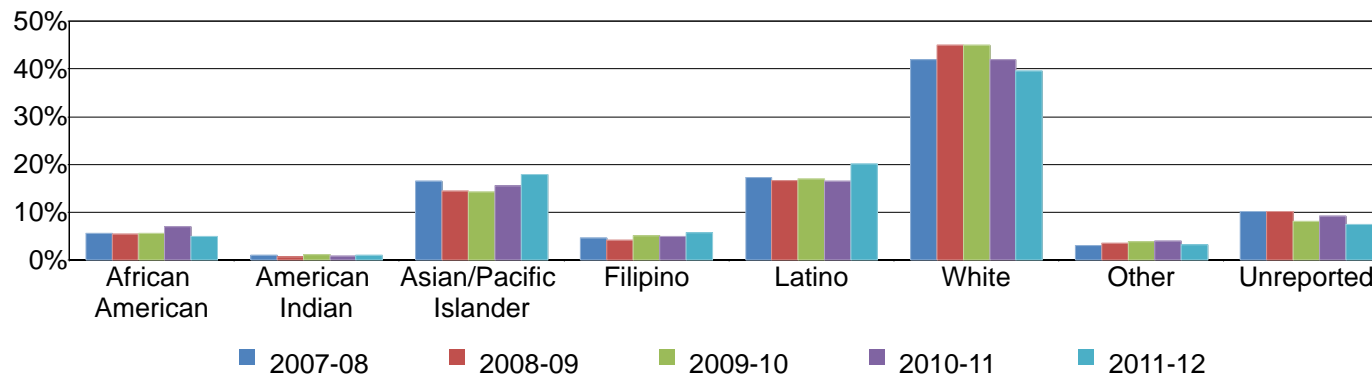
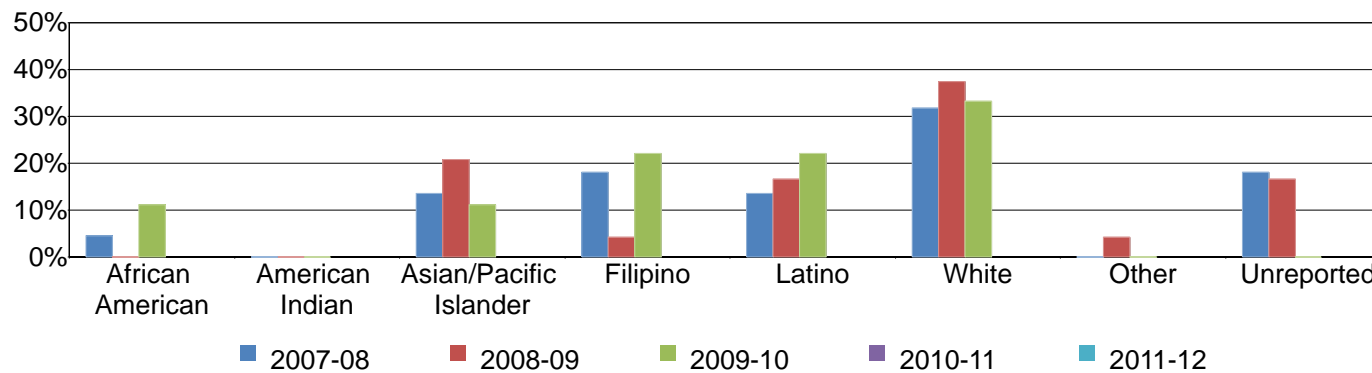


Figure 3.15.2. Mesa College Annual Certificates 60 or More Units by Ethnicity



Mesa College Fact Book 2012

Figure 3.15.3. Mesa College Annual Certificates 30 to 59 Units by Ethnicity

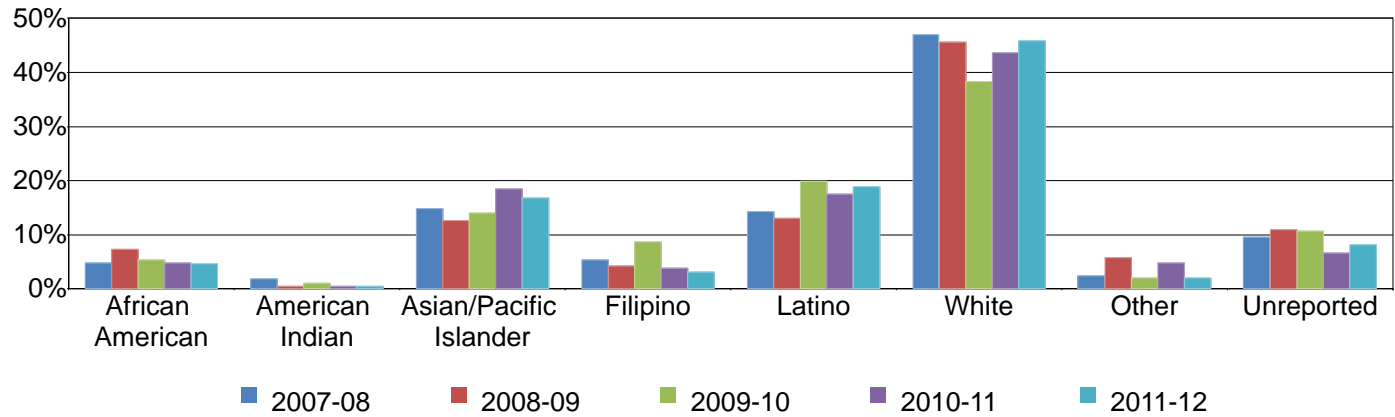
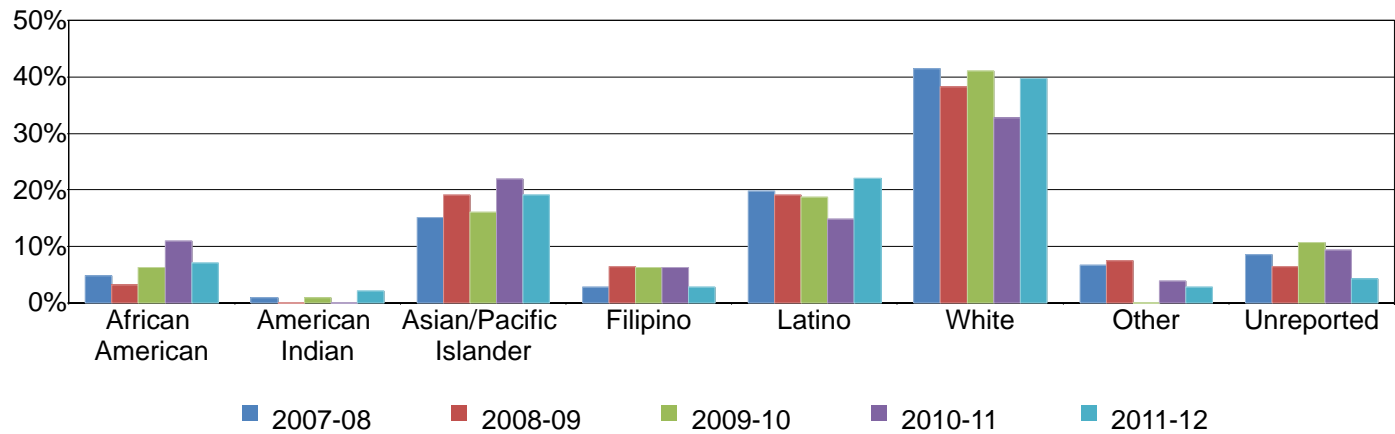


Figure 3.15.4. Mesa College Annual Certificates 29 or Fewer Units by Ethnicity



Mesa College Fact Book 2012

Table 3.15. Mesa College Annual Awards Conferred by Ethnicity

		2007-08		2008-09		2009-10		2010-11		2011-12		% Change 07/08-11/12	College Average 07/08-11/12	All Colleges Average 07/08-11/12
AA/AS Degree	African American	56	6%	50	5%	49	6%	63	7%	52	5%	-7%	6%	8%
	American Indian	10	1%	6	1%	10	1%	7	1%	10	1%	0%	1%	1%
	Asian/Pacific Islander	165	16%	133	15%	125	14%	141	16%	190	18%	15%	16%	13%
	Filipino	47	5%	38	4%	45	5%	45	5%	61	6%	30%	5%	7%
	Latino	173	17%	153	17%	148	17%	150	17%	215	20%	24%	18%	21%
	White	421	42%	412	45%	393	45%	381	42%	421	40%	0%	43%	38%
	Other	30	3%	32	3%	33	4%	37	4%	35	3%	17%	4%	4%
	Unreported	103	10%	93	10%	71	8%	83	9%	80	8%	-22%	9%	8%
Total	1,005	100%	917	100%	874	100%	907	100%	1,064	100%	6%	100%	100%	
Certificate 60 or More Units	African American	1	5%	0	0%	1	11%	0	0%	0	0%	-100%	4%	4%
	Asian/Pacific Islander	3	14%	5	21%	1	11%	0	0%	0	0%	-100%	16%	14%
	Filipino	4	18%	1	4%	2	22%	0	0%	0	0%	-100%	13%	12%
	Latino	3	14%	4	17%	2	22%	0	0%	0	0%	-100%	16%	14%
	White	7	32%	9	38%	3	33%	0	0%	0	0%	-100%	35%	39%
	Other	0	0%	1	4%	0	0%	0	0%	0	0%	---	2%	3%
	Unreported	4	18%	4	17%	0	0%	0	0%	0	0%	-100%	15%	14%
	Total	22	100%	24	100%	9	100%	0	0%	0	0%	-100%	100%	100%

Source: SDCCD Information System

Mesa College Fact Book 2012

Table 3.15. Mesa College Annual Awards Conferred by Ethnicity (continued)

		2007-08		2008-09		2009-10		2010-11		2011-12		% Change 07/08-11/12	College Average 07/08-11/12	All Colleges Average 07/08-11/12
Certificate 30 to 59 Units	African American	8	5%	14	7%	11	5%	10	5%	9	5%	13%	5%	8%
	American Indian	3	2%	1	1%	2	1%	1	0%	1	1%	-67%	1%	1%
	Asian/Pacific Islander	25	15%	24	13%	29	14%	39	18%	33	17%	32%	15%	12%
	Filipino	9	5%	8	4%	18	9%	8	4%	6	3%	-33%	5%	5%
	Latino	24	14%	25	13%	41	20%	37	18%	37	19%	54%	17%	20%
	White	79	47%	87	46%	79	38%	92	44%	90	46%	14%	44%	42%
	Other	4	2%	11	6%	4	2%	10	5%	4	2%	0%	3%	4%
	Unreported	16	10%	21	11%	22	11%	14	7%	16	8%	0%	9%	8%
	Total	168	100%	191	100%	206	100%	211	100%	196	100%	17%	100%	100%
Certificate 29 or Fewer Units	African American	5	5%	3	3%	7	6%	14	11%	10	7%	100%	7%	7%
	American Indian	1	1%	0	0%	1	1%	0	0%	3	2%	200%	1%	1%
	Asian/Pacific Islander	16	15%	18	19%	18	16%	28	22%	27	19%	69%	18%	12%
	Filipino	3	3%	6	6%	7	6%	8	6%	4	3%	33%	5%	4%
	Latino	21	20%	18	19%	21	19%	19	15%	31	22%	48%	19%	25%
	White	44	42%	36	38%	46	41%	42	33%	56	40%	27%	39%	41%
	Other	7	7%	7	7%	0	0%	5	4%	4	3%	-43%	4%	4%
	Unreported	9	8%	6	6%	12	11%	12	9%	6	4%	-33%	8%	6%
	Total	106	100%	94	100%	112	100%	128	100%	141	100%	33%	100%	100%
Grand Total	1,301	100%	1,226	100%	1,201	100%	1,246	100%	1,401	100%	8%	100%	100%	

Source: SDCCD Information System

Mesa College Fact Book 2012

Annual Awards Conferred by Age: On average, 70% of all associate degrees awarded and approximately half of all certificates awarded between 2007/08 and 2011/12 were to students between ages 18 and 29. Students between ages 25 and 29 consistently received one-quarter or more of the awards within each award category. Students between ages 18 and 24 were overrepresented in the number of associate degrees received at Mesa College (42%) when compared to the same age groups of all colleges in the district (38%).

Figure 3.16.1. Mesa College Annual AA/AS Degrees by Age

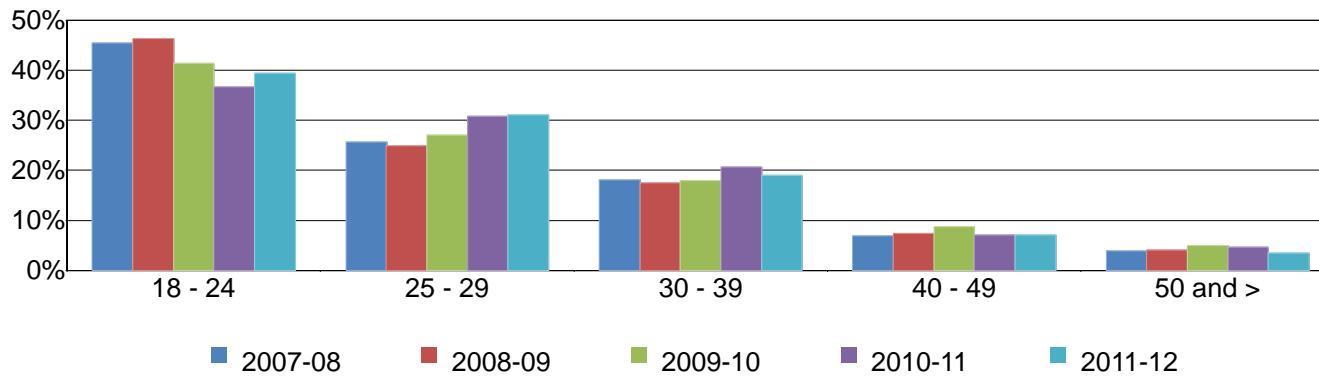


Figure 3.16.2. Mesa College Annual Certificates 60 or More Units by Age

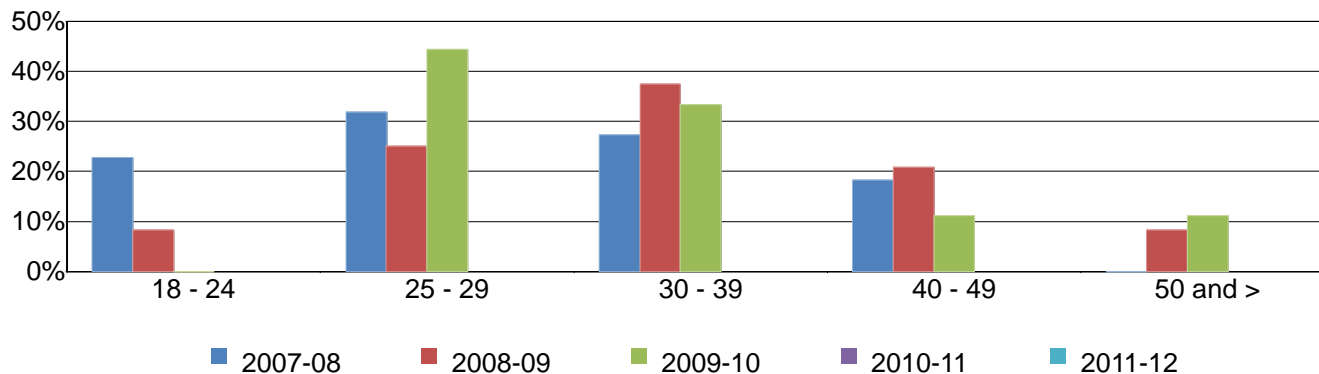


Figure 3.16.3. Mesa College Annual Certificates 30 to 59 Units by Age

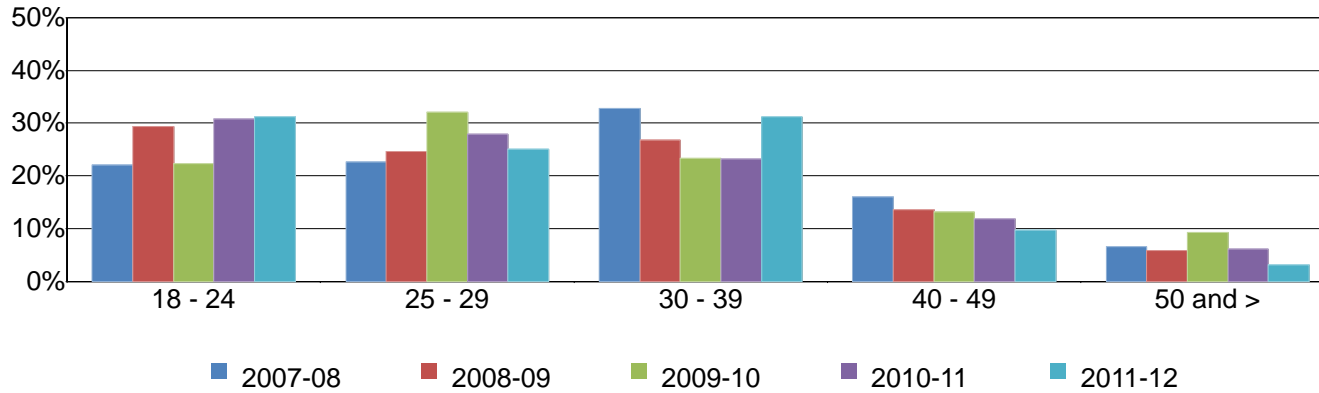
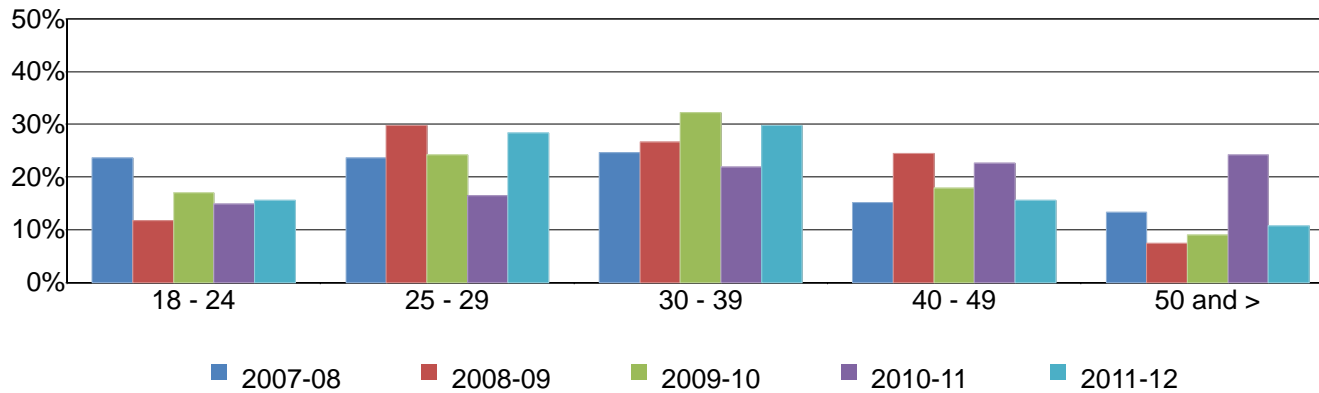


Figure 3.16.4. Mesa College Annual Certificates 29 or Fewer Units by Age



Mesa College Fact Book 2012

Table 3.16. Mesa College Annual Awards Conferred by Age

		2007-08		2008-09		2009-10		2010-11		2011-12		% Change 07/08-11/12	College Average 07/08-11/12	All Colleges Average 07/08-11/12
AA/AS Degree	18 - 24	457	45%	425	46%	362	41%	333	37%	419	39%	-8%	42%	38%
	25 - 29	258	26%	228	25%	236	27%	280	31%	331	31%	28%	28%	27%
	30 - 39	182	18%	160	17%	157	18%	188	21%	202	19%	11%	19%	21%
	40 - 49	69	7%	67	7%	76	9%	64	7%	75	7%	9%	7%	9%
	50 and >	39	4%	37	4%	43	5%	42	5%	37	3%	-5%	4%	5%
	Total	1,005	100%	917	100%	874	100%	907	100%	1,064	100%	6%	100%	100%
Certificate 60 or More Units	18 - 24	5	23%	2	8%	0	0%	0	0%	0	0%	-100%	13%	12%
	25 - 29	7	32%	6	25%	4	44%	0	0%	0	0%	-100%	31%	32%
	30 - 39	6	27%	9	38%	3	33%	0	0%	0	0%	-100%	33%	30%
	40 - 49	4	18%	5	21%	1	11%	0	0%	0	0%	-100%	18%	16%
	50 and >	0	0%	2	8%	1	11%	0	0%	0	0%	---	5%	10%
	Total	22	100%	24	100%	9	100%	0	0%	0	0%	-100%	100%	100%
Certificate 30 to 59 Units	18 - 24	37	22%	56	29%	46	22%	65	31%	61	31%	65%	27%	25%
	25 - 29	38	23%	47	25%	66	32%	59	28%	49	25%	29%	27%	24%
	30 - 39	55	33%	51	27%	48	23%	49	23%	61	31%	11%	27%	25%
	40 - 49	27	16%	26	14%	27	13%	25	12%	19	10%	-30%	13%	15%
	50 and >	11	7%	11	6%	19	9%	13	6%	6	3%	-45%	6%	10%
	Total	168	100%	191	100%	206	100%	211	100%	196	100%	17%	100%	100%
Certificate 29 or Fewer Units	18 - 24	25	24%	11	12%	19	17%	19	15%	22	16%	-12%	17%	22%
	25 - 29	25	24%	28	30%	27	24%	21	16%	40	28%	60%	24%	26%
	30 - 39	26	25%	25	27%	36	32%	28	22%	42	30%	62%	27%	28%
	40 - 49	16	15%	23	24%	20	18%	29	23%	22	16%	38%	19%	16%
	50 and >	14	13%	7	7%	10	9%	31	24%	15	11%	7%	13%	10%
	Total	106	100%	94	100%	112	100%	128	100%	141	100%	33%	100%	100%
Grand Total	1,301	100%	1,226	100%	1,201	100%	1,246	100%	1,401	100%	8%	100%	100%	

Source: SDCCD Information System

Mesa College Fact Book 2012

Annual Transfer Volume: The annual transfer volume for Mesa College decreased by 23%, from 1,823 in 2007/08 to 1,399 in 2011/12.

Figure 3.17. Mesa College Overall Annual Transfers

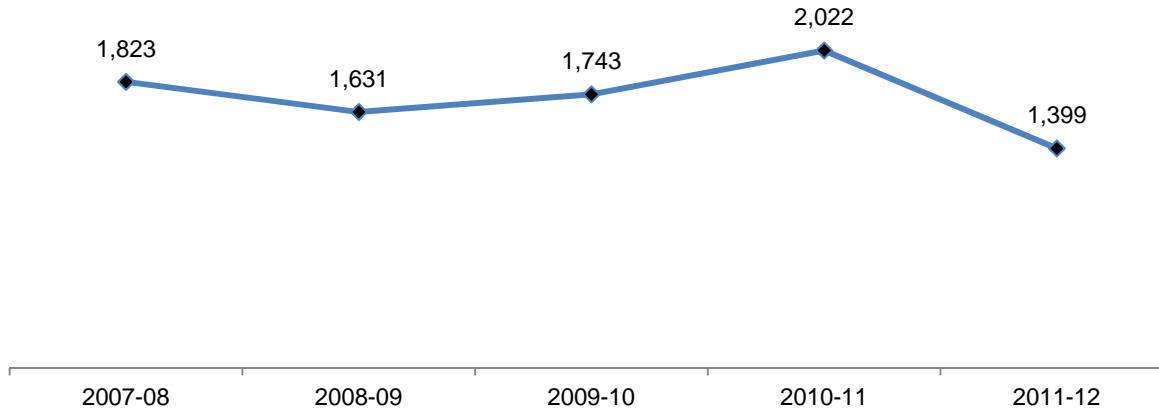


Table 3.17. Mesa College Overall Annual Transfers

	2007-08	2008-09	2009-10	2010-11	2011-12	% Change 07/08-11/12
Total	1,823	1,631	1,743	2,022	1,399	-23%

Source: SDCCD Information System

Mesa College Fact Book 2012

Annual Transfer Volume by Gender: Between 2007/08 and 2011/12, female students had a higher transfer volume (52%), on average, than their male student counterpart (48%). The transfer volumes for both female and male students decreased between 2007/08 and 2011/12 (29% & 16%, respectively).

Figure 3.18. Mesa College Annual Transfers by Gender

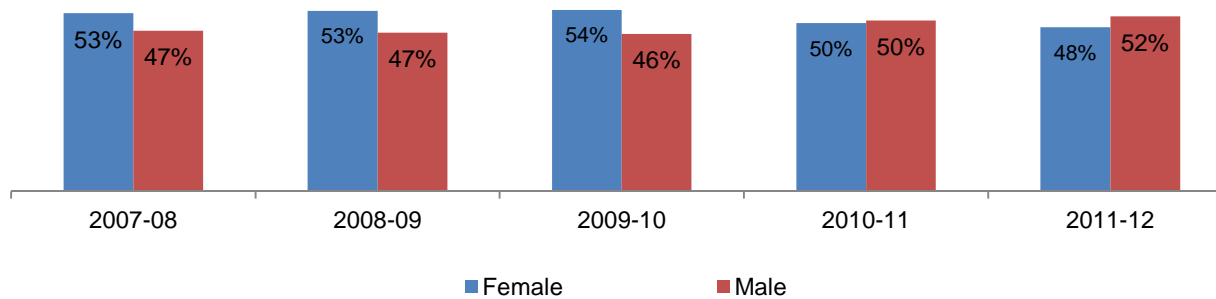


Table 3.18. Mesa College Annual Transfers by Gender

	2007-08		2008-09		2009-10		2010-11		2011-12		% Change 07/08-11/12	College Average 07/08-11/12	All Colleges Average 07/08-11/12
Female	959	53%	868	53%	933	54%	1,003	50%	677	48%	-29%	52%	52%
Male	864	47%	763	47%	810	46%	1,019	50%	722	52%	-16%	48%	48%
Unreported	0	0%	0	0%	0	0%	0	0%	0	0%	---	0%	0%
Total	1,823	100%	1,631	100%	1,743	100%	2,022	100%	1,399	100%	-23%	100%	100%

Source: SDCCD Information System

Mesa College Fact Book 2012

Annual Transfer Volume by Ethnicity: Of all the students who transferred from Mesa College, almost half were White students (49%) on average. Together, Latino students and Asian/Pacific Islander students accounted for more than one-quarter of the transfer volume (15% & 14%, respectively) between 2007/08 and 2011/12. Transfer volume decreased for all groups except students categorized as ‘Other’ ethnicities between 2007/08 and 2011/12.

Figure 3.19. Mesa College Annual Transfers by Ethnicity

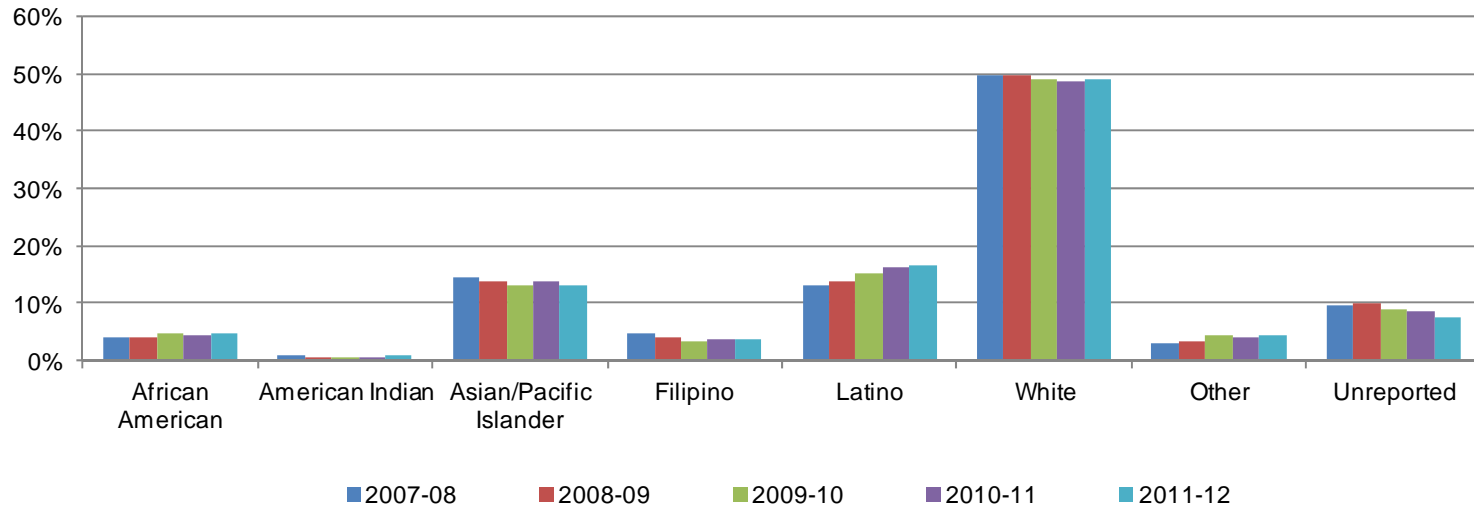


Table 3.19. Mesa College Annual Transfers by Ethnicity

	2007-08		2008-09		2009-10		2010-11		2011-12		% Change 07/08-11/12	College Average 07/08-11/12	All Colleges Average 07/08-11/12
African American	71	4%	69	4%	85	5%	88	4%	67	5%	-6%	4%	6%
American Indian	17	1%	11	1%	12	1%	13	1%	12	1%	-29%	1%	1%
Asian/Pacific Islander	266	15%	227	14%	230	13%	278	14%	184	13%	-31%	14%	13%
Filipino	86	5%	68	4%	57	3%	72	4%	54	4%	-37%	4%	5%
Latino	242	13%	223	14%	268	15%	331	16%	234	17%	-3%	15%	18%
White	910	50%	813	50%	858	49%	987	49%	684	49%	-25%	49%	45%
Other	54	3%	55	3%	77	4%	81	4%	60	4%	11%	4%	4%
Unreported	177	10%	165	10%	156	9%	172	9%	104	7%	-41%	9%	8%
Total	1,823	100%	1,631	100%	1,743	100%	2,022	100%	1,399	100%	-23%	100%	100%

Source: SDCCD Information System

Mesa College Fact Book 2012

Annual Transfer Volume by Age: The age groups with the highest transfer volume, on average, were students ages 18 to 24 (65%), students between ages 25 and 29 years old (21%), and students ages 30 to 39 years old (10%) between 2007/08 and 2011/12. Transfer volume decreased 30% for students age 18 to 24, from 1,233 in 2007/08 to 864 in 2011/12.

Figure 3.20. Mesa College Annual Transfers by Age

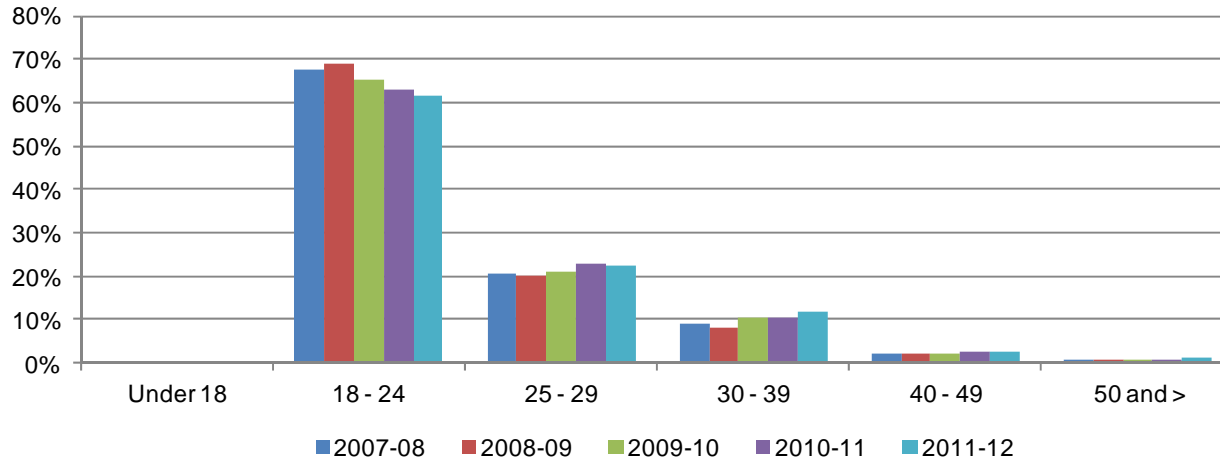


Table 3.20. Mesa College Annual Transfers by Age

	2007-08		2008-09		2009-10		2010-11		2011-12		% Change 07/08-11/12	College Average 07/08-11/12	All Colleges Average 07/08-11/12
Under 18	2	0%	0	0%	4	0%	8	0%	3	0%	50%	0%	0%
18 - 24	1,233	68%	1,124	69%	1,136	65%	1,273	63%	864	62%	-30%	65%	58%
25 - 29	372	20%	325	20%	369	21%	459	23%	315	23%	-15%	21%	25%
30 - 39	162	9%	135	8%	182	10%	215	11%	163	12%	1%	10%	13%
40 - 49	41	2%	34	2%	40	2%	56	3%	37	3%	-10%	2%	3%
50 and >	13	1%	13	1%	12	1%	11	1%	17	1%	31%	1%	1%
Unreported	0	0%	0	0%	0	0%	0	0%	0	0%	---	0%	0%
Total	1,823	100%	1,631	100%	1,743	100%	2,022	100%	1,399	100%	-23%	100%	100%

Source: SDCCD Information System

Mesa College Fact Book 2012

Annual Transfer Volume by CSU-UC/Private (In-State)/Out-of-State: On average, nearly half of the Mesa College transfer volume comprised students who transferred into the California State University system (CSU) (48%), followed by the University of California system (UC) (20%), Out-of-State institutions (18%), and In-State private institutions (13%). Transfer volume for students who transferred from Mesa College to an Out-of-State institution increased 22%, from 265 in 2007/08 to 323 in 2011/12. However, transfer volume for students who transferred from Mesa College into the CSU system decreased 44%, from 997 in 2007/08 to 555 in 2011/12.

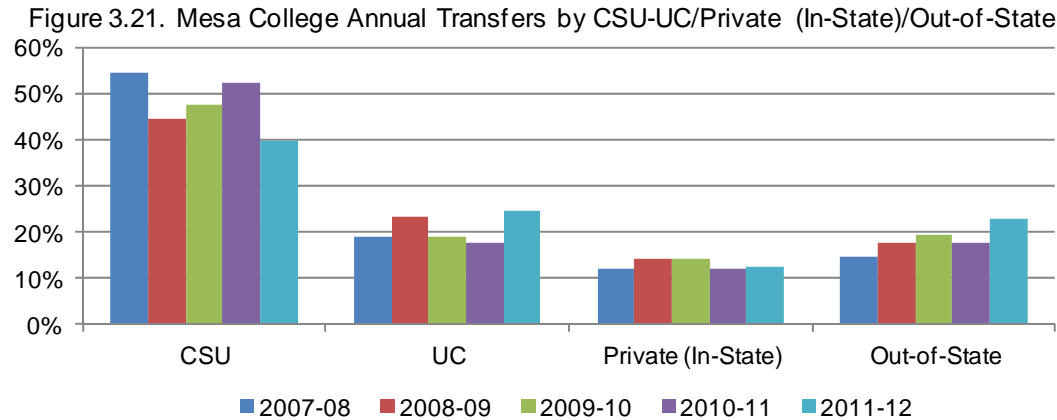


Table 3.21. Mesa College Annual Transfers by CSU-UC/Private (In-State)/Out-of-State

	2007-08		2008-09		2009-10		2010-11		2011-12		% Change 07/08-11/12	College Average 07/08-11/12	All Colleges Average 07/08-11/12
CSU	997	55%	730	45%	826	47%	1,061	52%	555	40%	-44%	48%	48%
UC	344	19%	380	23%	330	19%	361	18%	343	25%	0%	20%	19%
Private (In-State)	217	12%	235	14%	251	14%	244	12%	178	13%	-18%	13%	14%
Out-of-State	265	15%	286	18%	336	19%	356	18%	323	23%	22%	18%	20%
Total	1,823	100%	1,631	100%	1,743	100%	2,022	100%	1,399	100%	-23%	100%	100%

Source: SDCCD Information System

Note. Out-of-State included both public and private 4-year institutions.

Mesa College Fact Book 2012

Annual Transfer Volume by CSU/UC: Of the total Mesa College transfer volume (see table 3.17), 69% transferred into either the California State University (CSU) or University of California (UC) systems on average (48% & 20%, respectively). Of the students who transferred to CSU or UC systems, the majority went to CSU (70%) and the remainder went to UC (30%) on average. The number of students who transferred from Mesa College to the CSU system decreased 44%, from 997 in 2007/08 to 555 in 2011/12, while the transfer volume for the UC system remained stable.

Figure 3.22. Mesa College Annual Transfers by CSU/UC

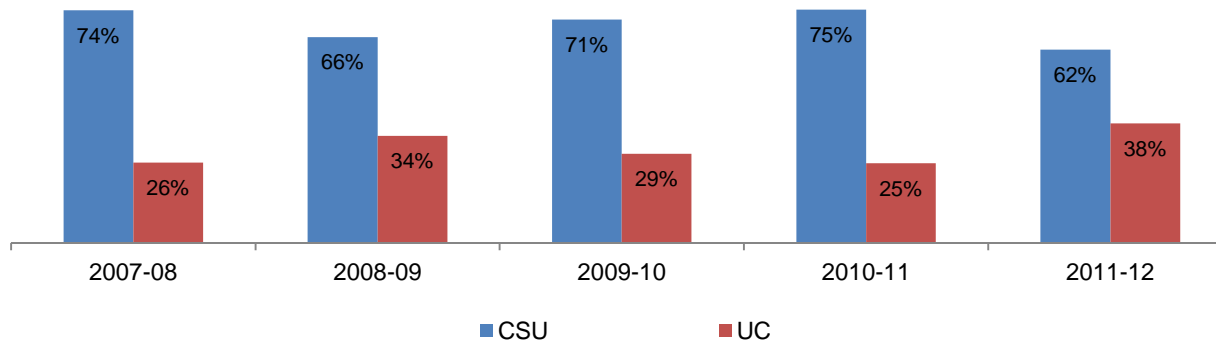


Table 3.22. Mesa College Annual Transfers by CSU/UC

	2007-08		2008-09		2009-10		2010-11		2011-12		% Change 07/08-11/12	College Average 07/08-11/12	All Colleges Average 07/08-11/12
CSU	997	74%	730	66%	826	71%	1,061	75%	555	62%	-44%	70%	72%
UC	344	26%	380	34%	330	29%	361	25%	343	38%	0%	30%	28%
Total	1,341	100%	1,110	100%	1,156	100%	1,422	100%	898	100%	-33%	100%	100%

Source: SDCCD Information System

Mesa College Fact Book 2012

Annual Transfer Volume by Institution Type: Of all the students who transferred from Mesa College, on average, 22% transferred to a private institution and 78% transferred to a public institution. The number of students who transferred from Mesa to public institutions decreased 27%, from 1,488 in 2007/08 to 1,085 in 2011/12.

Figure 3.23. Mesa College Annual Transfers by Institution Type

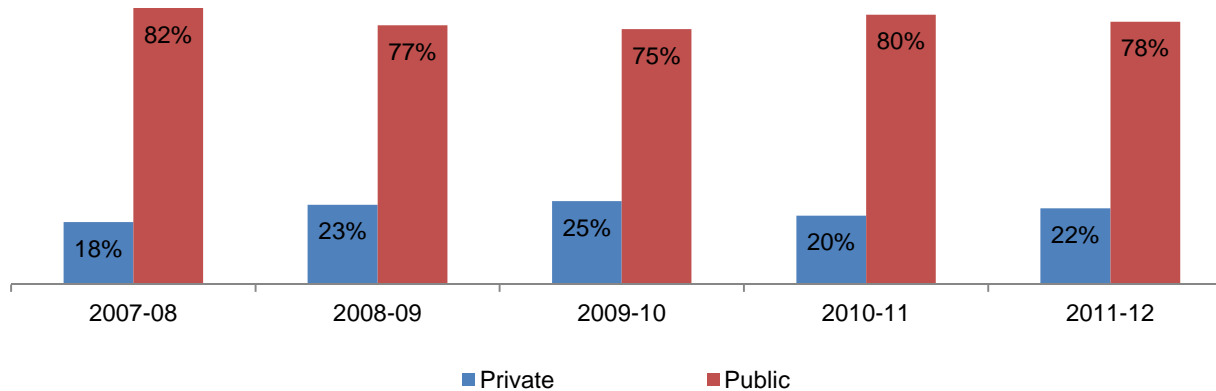


Table 3.23. Mesa College Annual Transfers by Institution Type

	2007-08		2008-09		2009-10		2010-11		2011-12		% Change 07/08-11/12	College Average 07/08-11/12	All Colleges Average 07/08-11/12
Private	335	18%	383	23%	429	25%	411	20%	314	22%	-6%	22%	24%
Public	1,488	82%	1,248	77%	1,314	75%	1,611	80%	1,085	78%	-27%	78%	76%
Total	1,823	100%	1,631	100%	1,743	100%	2,022	100%	1,399	100%	-23%	100%	100%

Source: SDCCD Information System

Note. Public and Private included both Out-of-State and In-State 4-year institutions.

Section IV
Productivity and Efficiency

Mesa College Fact Book 2012

This section of the Fact Book contains information on productivity and efficiency measures. The following describes in detail each of the measures:

- 1) FTES. The first measure reported in this section is a measure of productivity. FTES is a calculation of full-time equivalent students enrolled as of official census and is based on the total number of student contact hours. Starting in 2009-10 tutoring hours (course number 044) can only be claimed for Basic Skills classes at the credit colleges.
- 2) Enrollments. The second measure in this section of the report is also a measure of productivity. Enrollments are the number of seats enrolled or duplicated headcount as of a class census day (excludes those students who dropped or never attended prior to census day). Cancelled and tutoring classes are excluded. The measure counts all of the classes in which a single student is enrolled compared to unduplicated headcount which counts the student only once regardless of the number of classes he/she may be enrolled in.
- 3) Fill Rates. The third measure reported in this section is a measure of efficiency. Fill rates are the enrollment divided by the capacity or enrollment maximum defined in the curriculum as Cap. Apprenticeship, non-state supported, in-service, cancelled, tutoring, and classes with fewer than two enrollment capacity are excluded from the Fill Rate calculation.
- 4) Load. The fourth measure reported in this section is a measure of efficiency. Load is a calculation of the ratio of Weekly Student Contact Hours (WSCH) to Full-time Equivalent Faculty (WSCH/FTEF).

Mesa College Fact Book 2012

Annual FTES: Between 2007/08 and 2011/12, total FTES increased slightly by 2%. For credit FTES, there was 2% increase, from 14,880 in 2007/08 to 15,198 in 2011/12. Mesa College did not claim any FTES for tutoring in 2009/10, 2010/11, and 2011/12, thus, non-credit FTES was reported as 0 for these years.

Figure 4.1. Mesa College Resident & Non Resident Annual FTES

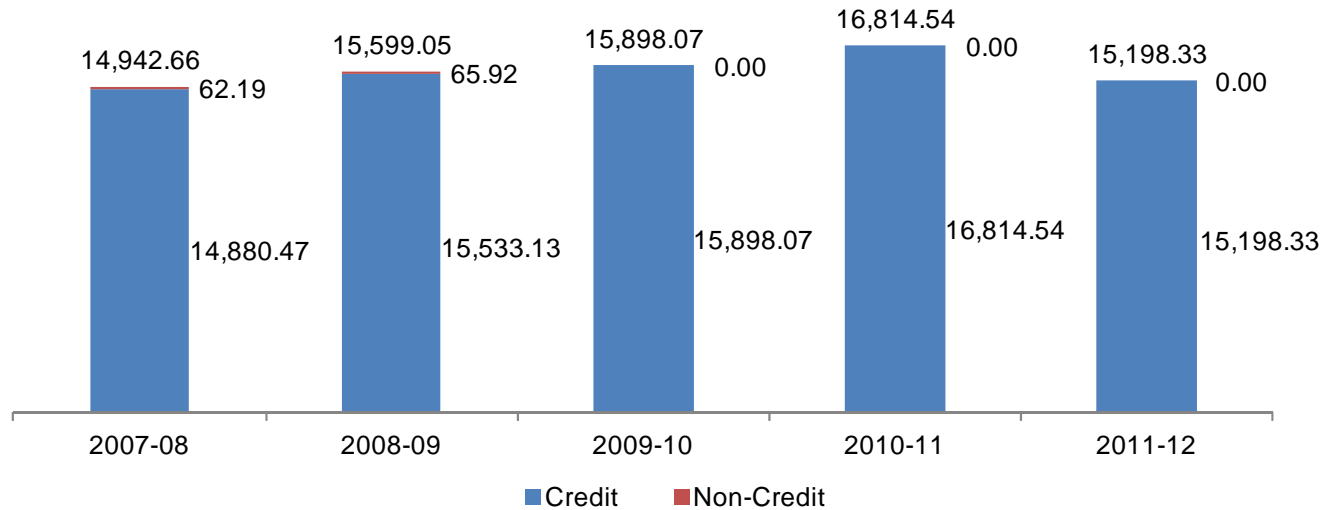


Table 4.1. Mesa College Resident & Non Resident Annual FTES

	2007-08	2008-09	2009-10	2010-11	2011-12
Credit	14,880.47	15,533.13	15,898.07	16,814.54	15,198.33
Non-Credit	62.19	65.92	0.00	0.00	0.00
Total	14,942.66	15,599.05	15,898.07	16,814.54	15,198.33

Source: SDCCD Information System

Mesa College Fact Book 2012

Enrollments: From Summer 2007 to Summer 2010, enrollment fluctuated from year to year; however, in Summer 2011, enrollment decreased dramatically, mirroring the trend for all colleges in the district. From Fall 2007 to Fall 2011, overall enrollment increased 12%. During the same time period, Mesa’s online course enrollment increased 59%. From Spring 2008 to Spring 2012, overall college enrollment increased 16%, and both the on-campus and online course enrollments increased 15% and 20%, respectively. With the exception of the summer term, Mesa College’s overall fall and spring enrollment trends increased at a greater rate than that of all colleges in the district.

Figure 4.2.1. Mesa College Enrollments (Summer)

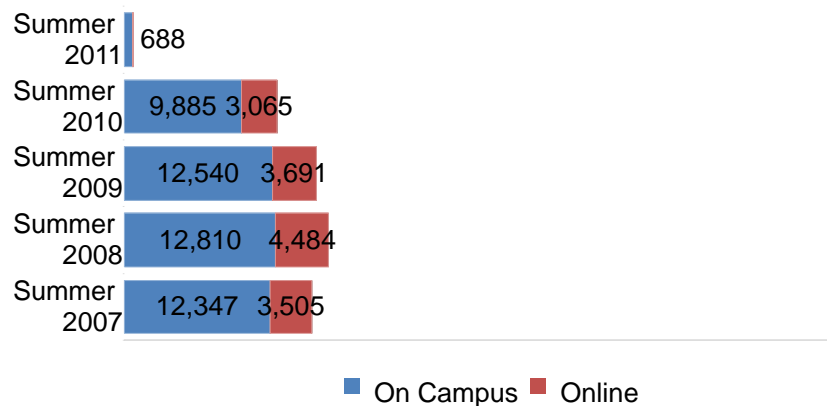


Figure 4.2.2. Mesa College Enrollments (Fall)

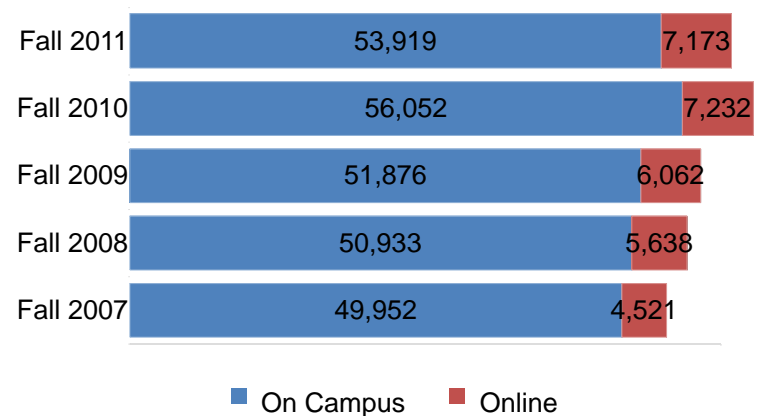
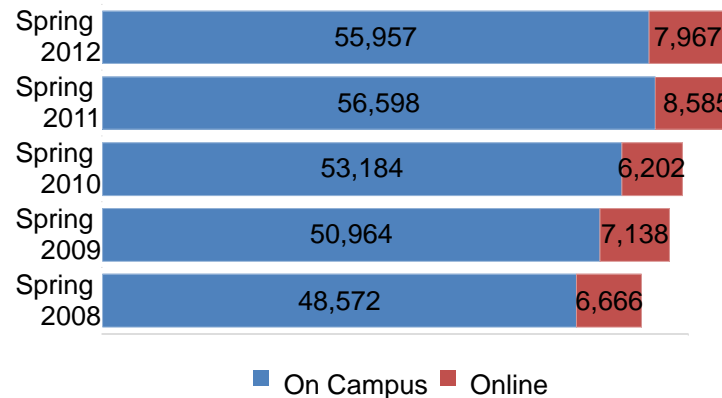


Figure 4.2.3. Mesa College Enrollments (Spring)



Mesa College Fact Book 2012

Fill Rates: On average, Mesa College overall fill rates were higher in fall (90%) and spring (88%) than in summer (80%) terms between 2007/08 and 2011/12. Over the past five years, fill rates increased for summer, fall, and spring terms. In summer terms, online courses had slightly higher fill rates than on-campus courses (83% vs. 79%), while the opposite trend was observed for fall and spring terms. On average, Mesa College had higher overall fill rates for the fall term and the overall summer and spring fill rates were comparable to the overall fill rates of all colleges in the district.

Figure 4.3.1. Mesa College Fill Rates (Summer)

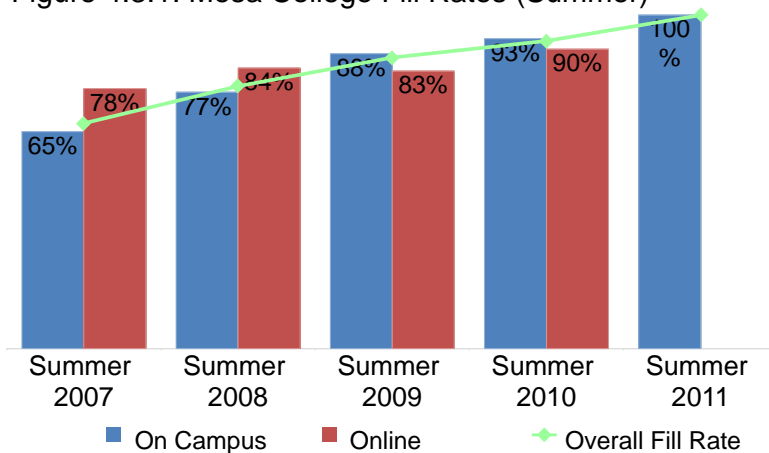


Figure 4.3.2. Mesa College Fill Rates (Fall)

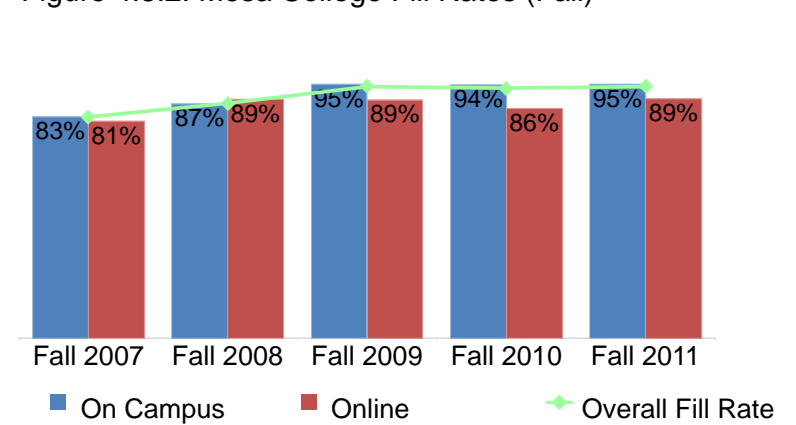
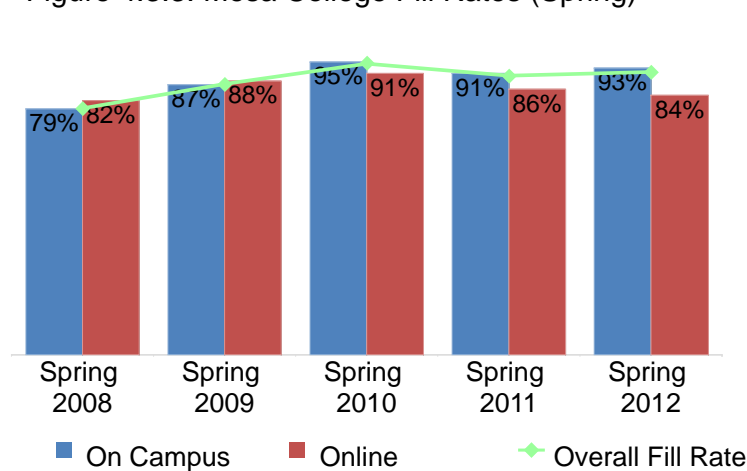


Figure 4.3.3. Mesa College Fill Rates (Spring)



Mesa College Fact Book 2012

Table 4.2. Mesa College Enrollments and Fill Rates

	On Campus			Online			Mesa College Total			All Colleges Total		
	Enrollment	Capacity	Fill Rate	Enrollment	Capacity	Fill Rate	Enrollment	Capacity	Fill Rate	Enrollment	Capacity	Fill Rate
Summer 2007	12,347	18,991	65%	3,505	4,501	78%	15,852	23,492	67%	37,414	56,523	65%
Summer 2008	12,810	16,561	77%	4,484	5,329	84%	17,294	21,890	79%	39,398	52,086	77%
Summer 2009	12,540	14,176	88%	3,691	4,439	83%	16,231	18,615	87%	39,262	45,761	88%
Summer 2010	9,885	10,564	93%	3,065	3,415	90%	12,950	13,979	92%	35,729	39,947	91%
Summer 2011	688	70	100%	63	0	---	751	70	100%	3,806	3,176	100%
Total	48,270	60,362	79%	14,808	17,684	83%	63,078	78,046	80%	155,609	197,493	79%

	On Campus			Online			Mesa College Total			All Colleges Total		
	Enrollment	Capacity	Fill Rate	Enrollment	Capacity	Fill Rate	Enrollment	Capacity	Fill Rate	Enrollment	Capacity	Fill Rate
Fall 2007	49,952	59,175	83%	4,521	5,597	81%	54,473	64,772	82%	117,881	149,637	79%
Fall 2008	50,933	56,004	87%	5,638	6,301	89%	56,571	62,305	87%	122,665	143,013	85%
Fall 2009	51,876	53,224	95%	6,062	6,840	89%	57,938	60,064	94%	123,429	133,381	92%
Fall 2010	56,052	57,797	94%	7,232	8,454	86%	63,284	66,251	93%	131,415	141,921	92%
Fall 2011	53,919	56,611	95%	7,173	7,991	89%	61,092	64,602	94%	126,421	138,386	91%
Total	262,732	282,811	91%	30,626	35,183	87%	293,358	317,994	90%	621,811	706,338	87%

	On Campus			Online			Mesa College Total			All Colleges Total		
	Enrollment	Capacity	Fill Rate	Enrollment	Capacity	Fill Rate	Enrollment	Capacity	Fill Rate	Enrollment	Capacity	Fill Rate
Spring 2008	48,572	59,529	79%	6,666	8,116	82%	55,238	67,645	80%	121,196	153,400	79%
Spring 2009	50,964	56,675	87%	7,138	8,067	88%	58,102	64,742	87%	126,372	143,639	87%
Spring 2010	53,184	55,076	95%	6,202	6,820	91%	59,386	61,896	94%	123,528	132,520	93%
Spring 2011	56,598	60,723	91%	8,585	10,006	86%	65,183	70,729	90%	133,644	147,340	90%
Spring 2012	55,957	58,628	93%	7,967	9,459	84%	63,924	68,087	91%	130,394	141,973	91%
Total	265,275	290,631	89%	36,558	42,468	86%	301,833	333,099	88%	635,134	718,872	88%

Source: SDCCD Information System

Note. The Enrollment and Capacity in the above table are not part of the Fill Rate calculation.

Mesa College Fact Book 2012

Load: From Fall 2007 to Fall 2011, Mesa College’s load values increased steadily. Between Spring 2008 and Spring 2012, Mesa’s load values also increased. Most of the Mesa College Load values were lower compared to the all colleges in the district Load values across the fall and spring terms. The statewide benchmark for Load is 525 for a 17.5 week semester. SDCCD has set an internal benchmark of 557, which is commensurate to its 16.5 week semester.

Figure 4.4.1. Mesa College Load (Fall)

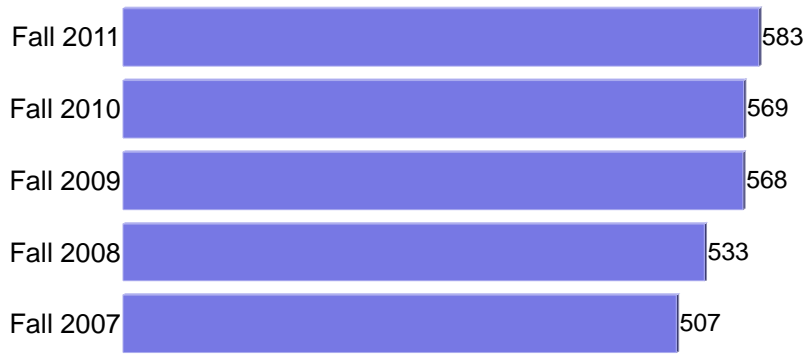


Figure 4.4.2. Mesa College Load (Spring)



Table 4.4. Mesa College Load

	Mesa College Load	All Colleges Load
Fall 2007	507	496
Fall 2008	533	533
Fall 2009	568	575
Fall 2010	569	572
Fall 2011	583	578
Spring 2008	495	495
Spring 2009	536	544
Spring 2010	577	582
Spring 2011	552	553
Spring 2012	568	571

Source: SDCCD Information System

Section V
Human Resources

Mesa College Fact Book 2012

This section of the Fact Book contains information on the number and classification of employees during the Fall 2011 semester. The information is reported as follows:

- 1) Gender
- 2) Ethnicity
- 3) Employment Type

Mesa College Fact Book 2012

Fall 2011 Employee Breakdown: There were a total of 1,345 employees working at Mesa College in Fall 2011. Adjunct faculty comprised the largest percentage of Mesa employees (54%), followed by contract faculty (17%), non-academic hourly (15%), and classified staff (11%). Supervisory staff and management constituted the smallest proportions of Mesa employees at 2% and 1%, respectively.

The ethnic breakdown showed that White employees constituted 57% of the total employee population, followed by Asian and Latino employees (13% & 12%, respectively), and African American employees (6%). Among classified staff, White employees constituted nearly half of the employees (48%) and made up approximately two-thirds of the teaching faculty positions (59% of contract and 65% of adjunct faculty) at Mesa. White employees constituted the majority (58%) of management positions, while Latino and African American employees held a combined 16% of the management positions (8% each), although the number of management positions was very small (n = 12). Among supervisory staff positions, White employees constituted 36% of this group, while African American, Asian, and Latino employees constituted more than half (54% at 18% each) of this group, while again, the number of supervisory positions was relatively small (n = 22).

Figure 5.1. Mesa College Fall 2011 Employees by Employment Type

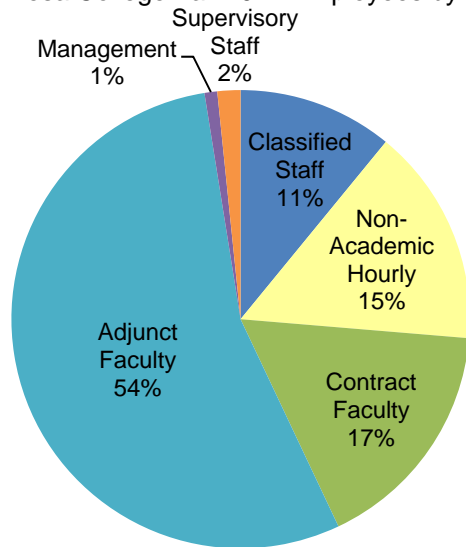
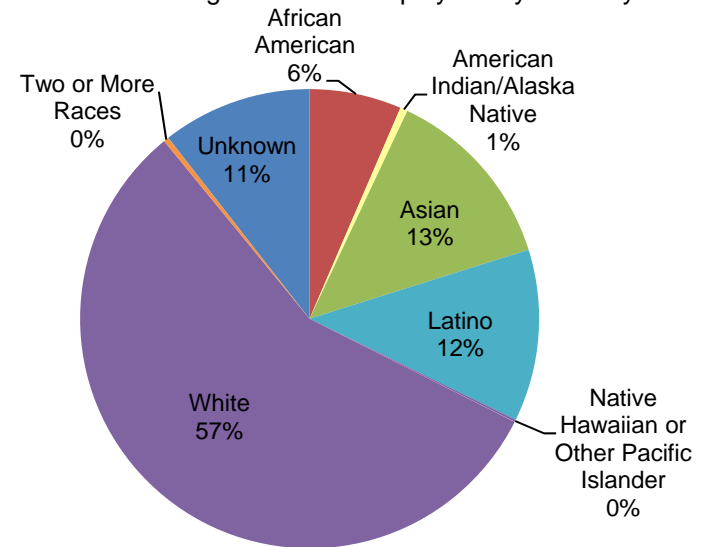


Figure 5.2. Mesa College Fall 2011 Employees by Ethnicity



Mesa College Fact Book 2012

Table 5.1. Mesa College Fall 2011 Employees by Ethnicity

	African American	American Indian/ Alaska Native	Asian	Latino	Native Hawaiian or Other Pacific Islander	White	Two or More Races	Unreported	Total								
Total Employees:	87	6%	7	1%	177	13%	163	12%	2	0%	762	57%	5	0%	142	11%	1,345
Male:	44	7%	5	1%	66	11%	76	12%	2	0%	353	57%	1	0%	73	12%	620
Female:	43	6%	2	0%	111	15%	87	12%	0	0%	409	56%	4	1%	69	10%	725
Classified Staff :	15	10%	0	0%	20	14%	29	20%	1	1%	70	48%	0	0%	12	8%	147
Male:	4	9%	0	0%	6	13%	11	24%	1	2%	18	39%	0	0%	6	13%	46
Female:	11	11%	0	0%	14	14%	18	18%	0	0%	52	51%	0	0%	6	6%	101
Non-Academic Hourly:	12	6%	0	0%	62	30%	29	14%	1	0%	70	34%	3	1%	30	14%	207
Male:	8	9%	0	0%	26	28%	10	11%	1	1%	29	31%	0	0%	19	20%	93
Female:	4	4%	0	0%	36	32%	19	17%	0	0%	41	36%	3	3%	11	10%	114
Contract Faculty:	17	8%	2	1%	21	9%	26	12%	0	0%	132	59%	0	0%	26	12%	224
Male:	9	9%	1	1%	7	7%	12	11%	0	0%	64	61%	0	0%	12	11%	105
Female:	8	7%	1	1%	14	12%	14	12%	0	0%	68	57%	0	0%	14	12%	119
Adjunct Faculty:	38	5%	5	1%	70	10%	74	10%	0	0%	475	65%	2	0%	69	9%	733
Male:	21	6%	4	1%	27	7%	41	11%	0	0%	235	65%	1	0%	34	9%	363
Female:	17	5%	1	0%	43	12%	33	9%	0	0%	240	65%	1	0%	35	9%	370
Management:	1	8%	0	0%	0	0%	1	8%	0	0%	7	58%	0	0%	3	25%	12
Male:	0	0%	0	0%	0	0%	1	13%	0	0%	5	63%	0	0%	2	25%	8
Female:	1	25%	0	0%	0	0%	0	0%	0	0%	2	50%	0	0%	1	25%	4
Supervisory Staff:	4	18%	0	0%	4	18%	4	18%	0	0%	8	36%	0	0%	2	9%	22
Male:	2	40%	0	0%	0	0%	1	20%	0	0%	2	40%	0	0%	0	0%	5
Female:	2	12%	0	0%	4	24%	3	18%	0	0%	6	35%	0	0%	2	12%	17

Source: SDCCD Information System

Table 5.2. Mesa College Employees by Gender and Employment Status

Gender	Employment Status
Female	54%
Male	46%
Full-Time/Contract	30%
Hourly/Adjunct	70%

Source: SDCCD Information System