

Fact Book

Mesa College



Prepared by:
Office of Institutional Research and Planning
August 2014

Mesa College Fact Book 2014

Overview & Mission	1	Annual Retention Rates	
Section I. Headcount and Student Characteristics	3	Overall	37
Section Overview	4	By Gender.....	38
Overall	5	By Ethnicity.....	39
By Gender.....	6	By Age.....	40
By Ethnicity.....	7	Annual GPA	
By Age.....	8	Overall	41
By Enrollment Status	9	By Gender.....	42
By Educational Objective	10	By Ethnicity	43
By Primary Language.....	12	By Age.....	44
By Prior Education Level	13	Annual Awards Conferred	
By Service Area of Residence	14	Overall	45
By First Generation	15	By Gender.....	46
By Residency Status.....	16	By Ethnicity.....	48
By DSPS	17	By Age.....	52
By EOPS.....	18	Annual Transfer	
By Day, Evening, & Online Status	19	Overall	55
By Military Status.....	20	By Gender.....	56
By Units Attempted by Units Earned	21	By Ethnicity.....	57
Section II. Persistence Rates	23	By Age.....	58
Section Overview	24	By CSU-UC/Private (In-state)/Out-of-State	59
Overall	25	By CSU/UC.....	60
By Gender.....	26	By Institution Type (Private vs. Public)	61
By Ethnicity.....	27	Section IV. Productivity and Efficiency	62
By Age.....	29	Section Overview	63
Section III. Student Completion	31	FTES (Resident, Nonresident, and Overall)	64
Section Overview	32	Enrollments (Online and On Campus)	67
Annual Success Rates		Fill Rates	68
Overall	33	Load	70
By Gender.....	34	Section V. Human Resources	71
By Ethnicity.....	35	Section Overview	72
By Age.....	36	Fall 2013 Employee Breakdown.....	73

Mesa College Fact Book 2014

OVERVIEW

This Fact Book is a publication of the Office of Institutional Research and Planning for the San Diego Community College District. It is designed to serve the information needs of the college community with a primary focus on student enrollment, demographics, and outcomes.

The Fact Book is a rich source of collegewide trend information that may be used for planning and decision making. The book contains the following five sections:

- 1) **Headcount and Student Characteristics.** Provides information on student demographic characteristics (e.g., age, ethnicity, and educational objective) over five years.
- 2) **Persistence Rates.** Provides information about first-time to college students who complete a fall term and enroll in the subsequent spring and fall terms. The information is also reported by demographic characteristics of interest.
- 3) **Student Completion.** Provides information on students' successful course completion rates, retention rates, GPA, awards conferred, and transfer volume. All of the information is provided in summary form, as well as by demographic characteristics of interest.
- 4) **Productivity and Efficiency.** Provides information on annual FTES, enrollment and fill rates, and Load (WSCH/FTEF).
- 5) **Human Resources.** Provides information on the number of employees by ethnicity, gender, and employment type.

Each section contains the following benchmarks: 1) The percentage change over the five year period being reported, 2) The collegewide average, and 3) The "All Colleges" in the district averages (excludes Continuing Education).

Mesa College Fact Book 2014

Vision

San Diego Mesa College shall be a key force in our community to educate our students to shape the future.

Mission

San Diego Mesa College empowers our diverse student body to reach their educational goals and shape the future. As a comprehensive community college committed to access and success, we promote student learning and achievement leading to degrees and certificates in support of transfer education, workforce training, and lifelong learning opportunities. Faculty and staff collaborate with our students to foster scholarship, leadership, and responsibility to effect positive change within our community.

Strategic Directions

1. Deliver, advance, and support an inclusive teaching and learning environment that enables all students to achieve their educational goals.
2. Build and sustain a sense of community that extends across campus and constituencies, nurturing collaboration, learning, growth, and diversity.
3. Build and sustain pathways in support of the comprehensive community college mission.
4. Support innovation in our practices.
5. Support personal growth and professional development of our employees.
6. Serve as stewards of our resources and advance effective practices in support of accountability.

Section I

Headcount and Student Characteristics

Mesa College Fact Book 2014

This section of the Fact Book contains student headcount by various student characteristics. The headcount figures are individual counts of students, or unduplicated headcount, based on official census counts at the end of the semester. Drops, never attends, and cancelled classes are excluded. The headcount information is reported over a period of five years to analyze trends and establish benchmarks. Headcount information is reported by the following segments:

- 1) Overall
- 2) Gender
- 3) Ethnicity
- 4) Age
- 5) Enrollment Status
- 6) Educational Objective
- 7) Primary Language
- 8) Prior Education Level
- 9) Service Area of Residence
- 10) First Generation
- 11) Residency Status
- 12) DSPS
- 13) EOPS
- 14) Day, Evening, and Online Status
- 15) Military Status
- 16) Units Attempted by Units Earned

Mesa College Fact Book 2014

Overall Headcount: Unduplicated headcount for Mesa College decreased 94%, from 11,505 in Summer 2009 to 702 in Summer 2013. Unduplicated headcount for Mesa College increased 4%, from 24,248 in Fall 2009 to 25,280 in Fall 2013. Finally, unduplicated student headcount for Mesa College decreased very slightly (<1%) from 24,751 in Spring 2010 to 24,702 in Spring 2014.

Figure 1.1. Mesa College Overall Headcount (Fall)

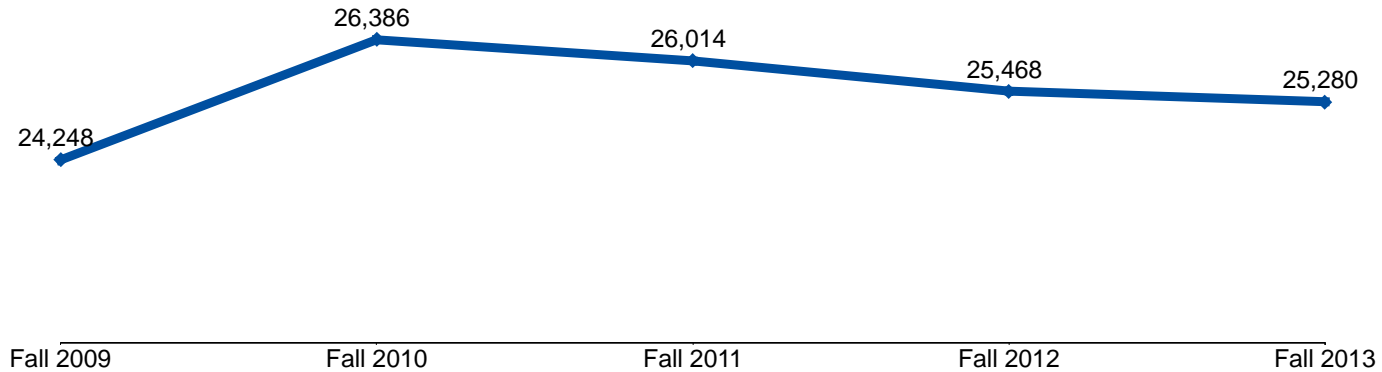


Table 1.1. Mesa College Overall Headcount (Summer, Fall, and Spring)

	Summer 09	Summer 10	Summer 11	Summer 12	Summer 13	% Change Summer 09-13
Total	11,505	9,582	660	613	702	-94%

	Fall 09	Fall 10	Fall 11	Fall 12	Fall 13	% Change Fall 09-13
Total	24,248	26,386	26,014	25,468	25,280	4%

	Spring 10	Spring 11	Spring 12	Spring 13	Spring 14	% Change Spring 10-14
Total	24,751	26,994	26,245	25,783	24,702	0%

Source: SDCCD Information System

Mesa College Fact Book 2014

Headcount by Gender: On average, female student headcount (52%) was higher than their male student counterpart (48%). Both the male and female student headcounts increased (6% & 2%, respectively) between Fall 2009 and Fall 2013.

Figure 1.2. Mesa College Headcount by Gender

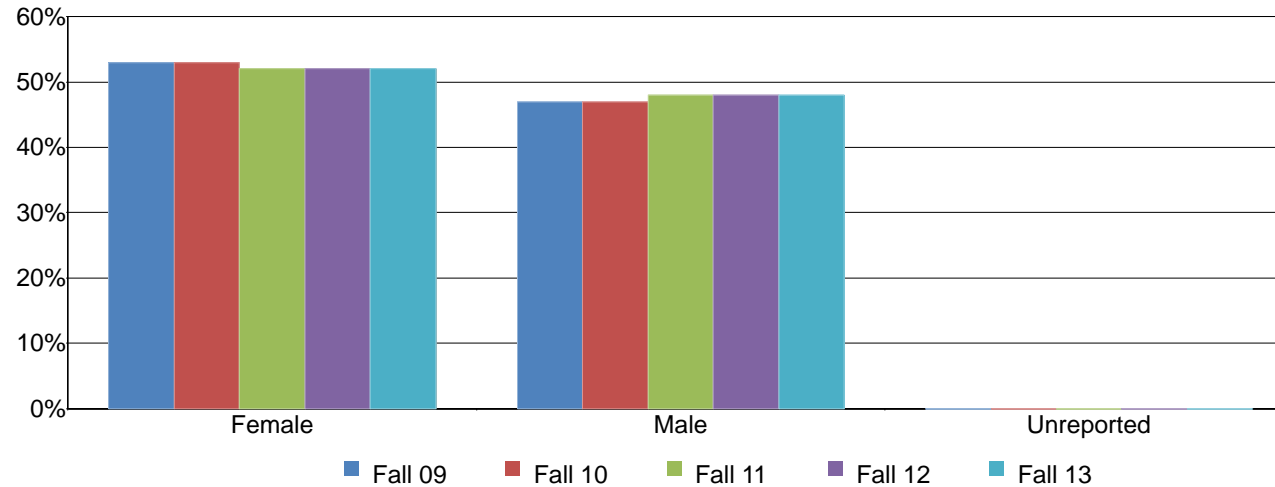


Table 1.2. Mesa College Headcount by Gender

	Fall 09		Fall 10		Fall 11		Fall 12		Fall 13		% Change Fall 09-13	College Average Fall 09-13	All Colleges Average Fall 09-13
Female	12,822	53%	13,856	53%	13,544	52%	13,271	52%	13,116	52%	2%	52%	50%
Male	11,424	47%	12,529	47%	12,469	48%	12,193	48%	12,162	48%	6%	48%	50%
Unreported	2	0%	1	0%	1	0%	4	0%	2	0%	0%	0%	0%
Total	24,248	100%	26,386	100%	26,014	100%	25,468	100%	25,280	100%	4%	100%	100%

Source: SDCCD Information System

Mesa College Fact Book 2014

Headcount by Ethnicity: From Fall 2009 to Fall 2013, on average, White students comprised the largest percentage of the Mesa College student population (36%), followed by Latino students (27%), and Asian/Pacific Islander students (14%). Both Latino and African American student headcounts increased (61% & 7%, respectively), as did the headcount for students categorized as "Other" ethnicities (73%). On average, White and Asian/Pacific Islander students were overrepresented at Mesa College (36% & 14%, respectively) compared to the same ethnic groups for all colleges in the District (34% & 12%, respectively). However, Latino students (27%) were underrepresented at Mesa compared to the same ethnic group for all colleges in the District (31%).

Figure 1.3. Mesa College Headcount by Ethnicity

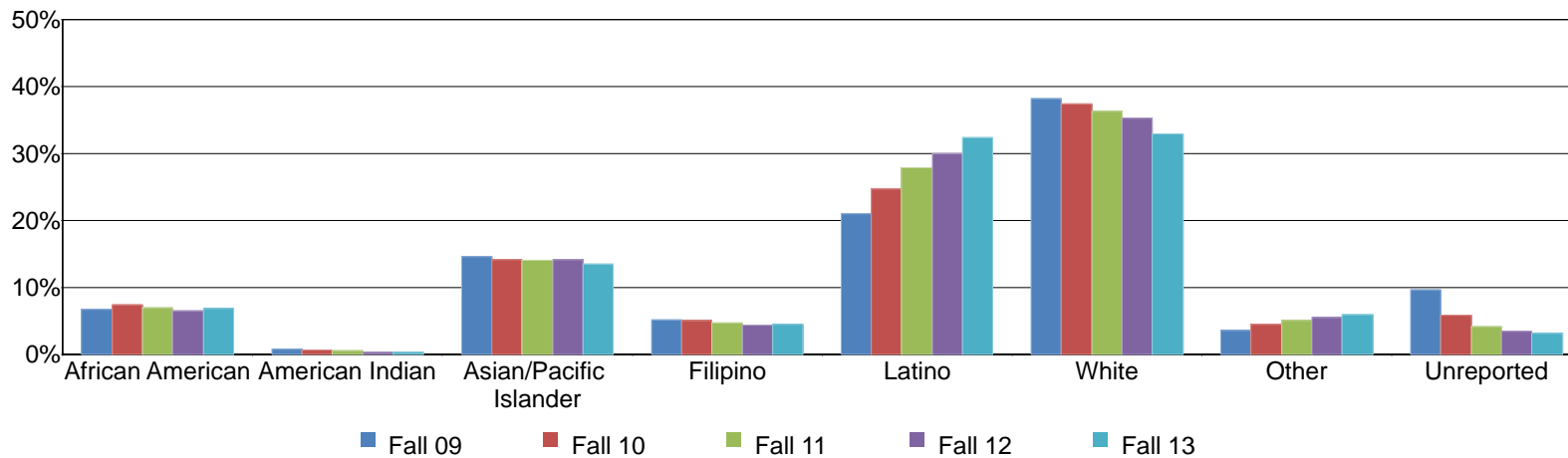


Table 1.3. Mesa College Headcount by Ethnicity

	Fall 09		Fall 10		Fall 11		Fall 12		Fall 13		% Change Fall 09-13	College Average Fall 09-13	All Colleges Average Fall 09-13
African American	1,640	7%	1,971	7%	1,828	7%	1,664	7%	1,750	7%	7%	7%	8%
American Indian	195	1%	174	1%	156	1%	105	0%	101	0%	-48%	1%	1%
Asian/Pacific Islander	3,559	15%	3,756	14%	3,660	14%	3,611	14%	3,427	14%	-4%	14%	12%
Filipino	1,257	5%	1,349	5%	1,237	5%	1,126	4%	1,157	5%	-8%	5%	5%
Latino	5,102	21%	6,522	25%	7,245	28%	7,659	30%	8,196	32%	61%	27%	31%
White	9,272	38%	9,877	37%	9,454	36%	8,986	35%	8,336	33%	-10%	36%	34%
Other	870	4%	1,200	5%	1,332	5%	1,409	6%	1,503	6%	73%	5%	5%
Unreported	2,353	10%	1,537	6%	1,102	4%	908	4%	810	3%	-66%	5%	5%
Total	24,248	100%	26,386	100%	26,014	100%	25,468	100%	25,280	100%	4%	100%	100%

Source: SDCCD Information System

Mesa College Fact Book 2014

Headcount by Age: Students between ages 18 and 24, on average, constituted over half of the Mesa student population (56%). The number of Mesa students 18 to 24 years of age increased 11%, between Fall 2009 and Fall 2013. However, students ages 40 to 49 displayed a decrease in headcount of 17% during the same time frame. At Mesa, students under 18 and between ages 18 and 24 were overrepresented (5% & 56%, respectively) compared to the student headcount of the same age group for all colleges in the District (3% & 53%, respectively).

Figure 1.4. Mesa College Headcount by Age

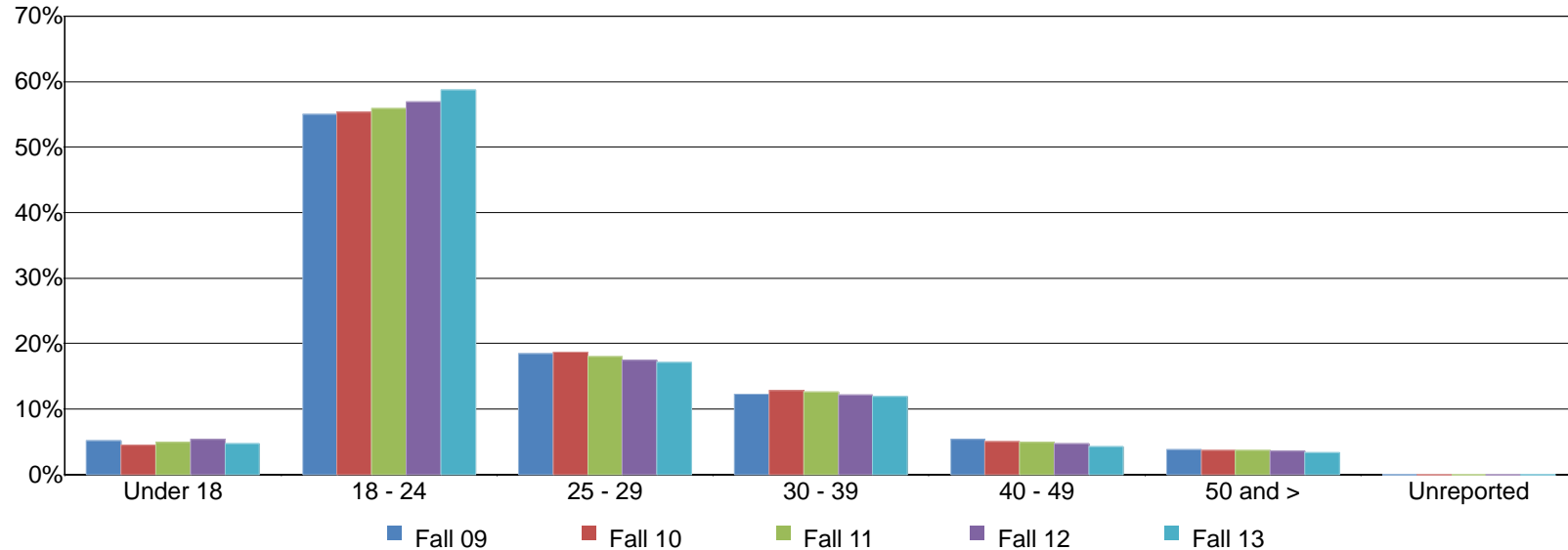


Table 1.4. Mesa College Headcount by Age

	Fall 09		Fall 10		Fall 11		Fall 12		Fall 13		% Change Fall 09-13	College Average Fall 09-13	All Colleges Average Fall 09-13
Under 18	1,253	5%	1,174	4%	1,283	5%	1,378	5%	1,178	5%	-6%	5%	3%
18 - 24	13,324	55%	14,611	55%	14,545	56%	14,486	57%	14,840	59%	11%	56%	53%
25 - 29	4,475	18%	4,915	19%	4,672	18%	4,427	17%	4,316	17%	-4%	18%	18%
30 - 39	2,983	12%	3,378	13%	3,274	13%	3,078	12%	3,023	12%	1%	12%	14%
40 - 49	1,304	5%	1,342	5%	1,288	5%	1,192	5%	1,084	4%	-17%	5%	7%
50 and >	908	4%	964	4%	952	4%	903	4%	836	3%	-8%	4%	5%
Unreported	1	0%	2	0%	0	0%	4	0%	3	0%	200%	0%	0%
Total	24,248	100%	26,386	100%	26,014	100%	25,468	100%	25,280	100%	4%	100%	100%

Source: SDCCD Information System

Mesa College Fact Book 2014

Headcount by Enrollment Status: On average, 64% of the student population comprised continuing students. The number of returning transfer students and current high school students who were enrolled at Mesa College declined 13% and 2%, respectively. Student headcount increased most notably for first-time students (18%) and first-time transfer students (16%).

Figure 1.5. Mesa College Headcount by Enrollment Status

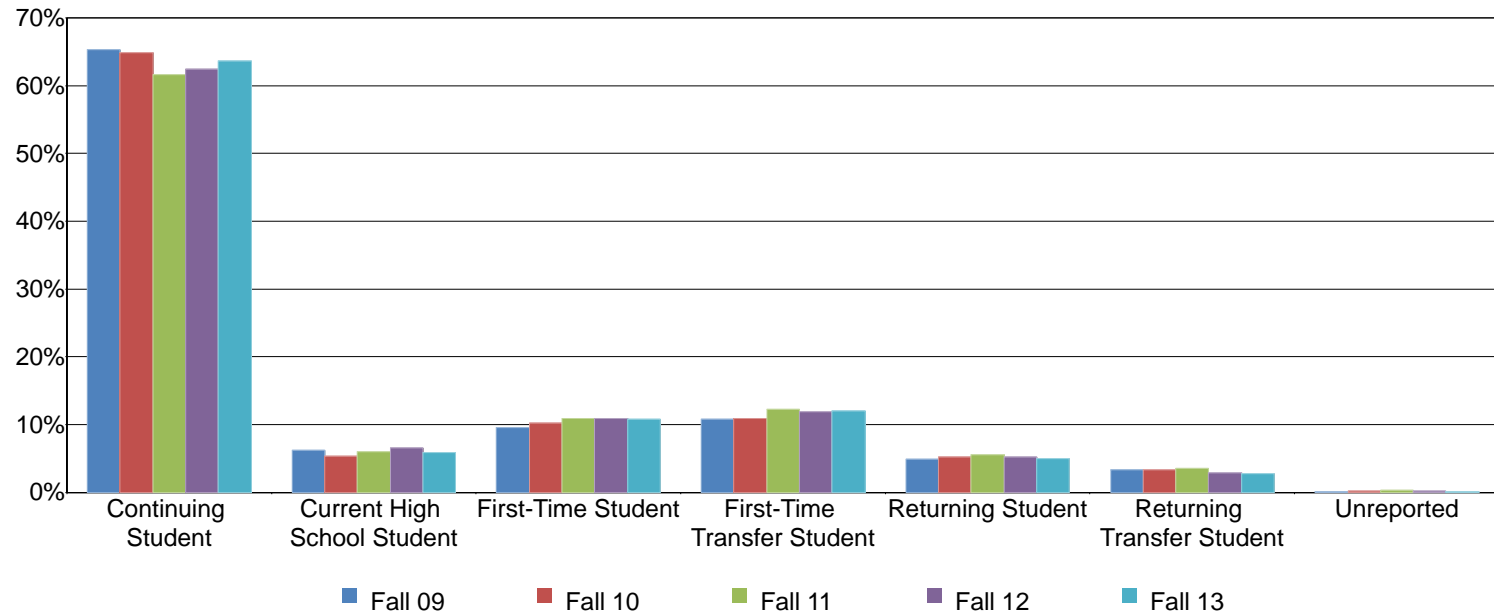


Table 1.5. Mesa College Headcount by Enrollment Status

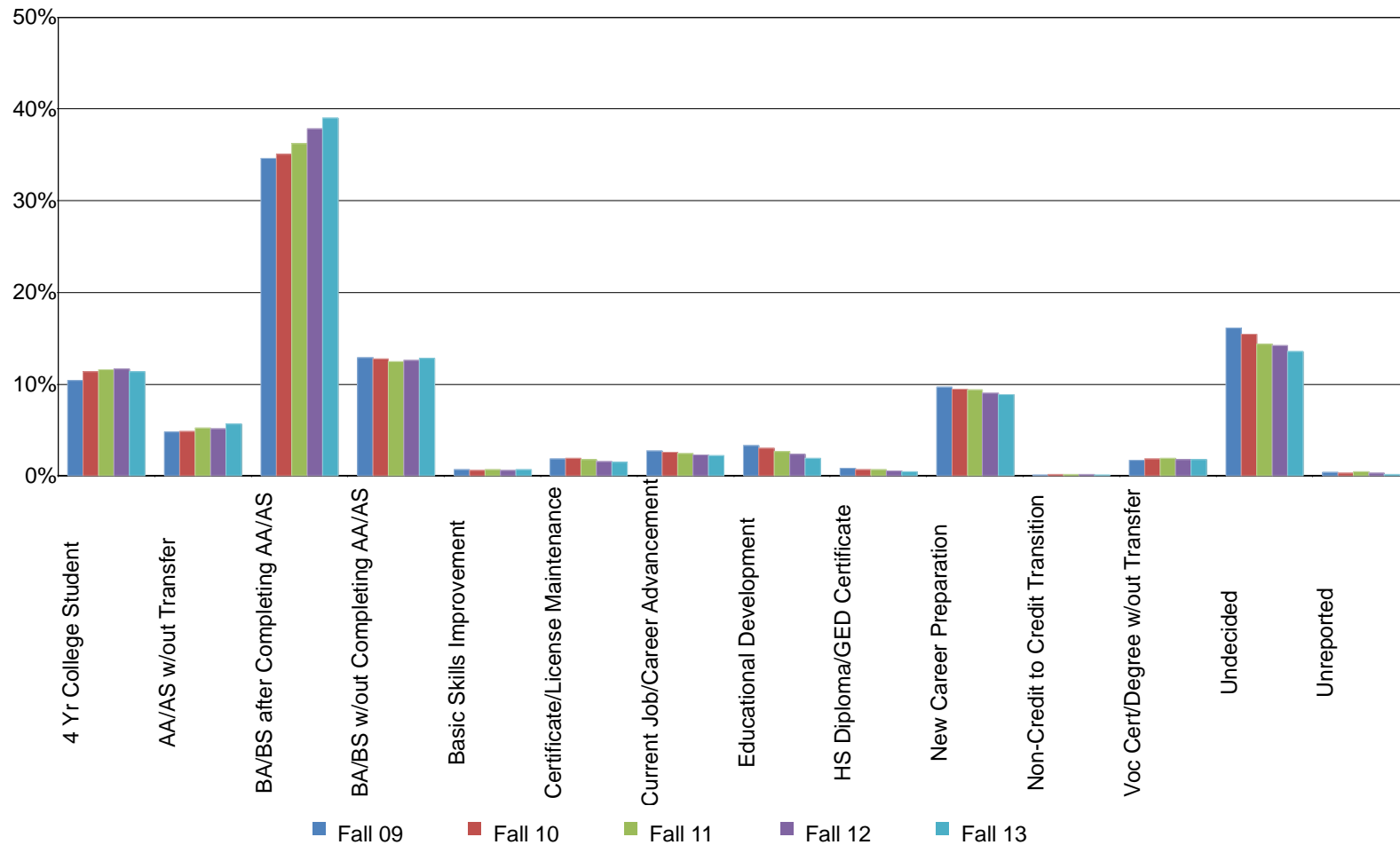
	Fall 09		Fall 10		Fall 11		Fall 12		Fall 13		% Change Fall 09-13	College Average Fall 09-13	All Colleges Average Fall 09-13
Continuing Student	15,841	65%	17,122	65%	16,054	62%	15,900	62%	16,089	64%	2%	64%	63%
Current High School Student	1,499	6%	1,395	5%	1,539	6%	1,661	7%	1,473	6%	-2%	6%	4%
First-Time Student	2,302	9%	2,708	10%	2,823	11%	2,771	11%	2,715	11%	18%	10%	11%
First-Time Transfer Student	2,612	11%	2,872	11%	3,178	12%	3,024	12%	3,042	12%	16%	12%	11%
Returning Student	1,178	5%	1,378	5%	1,451	6%	1,332	5%	1,254	5%	6%	5%	7%
Returning Transfer Student	788	3%	862	3%	906	3%	733	3%	682	3%	-13%	3%	3%
Unreported	28	0%	49	0%	63	0%	47	0%	25	0%	-11%	0%	0%
Total	24,248	100%	26,386	100%	26,014	100%	25,468	100%	25,280	100%	4%	100%	100%

Source: SDCCD Information System

Mesa College Fact Book 2014

Headcount by Educational Objective: Half of the Mesa student population (50%) selected transfer to obtain a BA/BS, with or without completing an AA/AS degree, as their educational objective during the five terms being reported. Between Fall 2009 and Fall 2013, the educational objectives that increased the most in selection were AA/AS degree without transfer and BA/BS after completing an AA/AS (24% & 18%, respectively). In contrast, students who selected educational development and high school diploma/GED certificate as educational objectives decreased 41% and 43%, respectively.

Figure 1.6. Mesa College Headcount by Educational Objective



Mesa College Fact Book 2014

Table 1.6. Mesa College Headcount by Educational Objective

	Fall 09		Fall 10		Fall 11		Fall 12		Fall 13		% Change Fall 09-13	College Average Fall 09-13	All Colleges Average Fall 09-13
4 Yr College Student	2,530	10%	2,997	11%	3,017	12%	2,969	12%	2,865	11%	13%	11%	10%
AA/AS w/out Transfer	1,153	5%	1,288	5%	1,359	5%	1,314	5%	1,424	6%	24%	5%	6%
BA/BS after Completing AA/AS	8,386	35%	9,245	35%	9,426	36%	9,634	38%	9,869	39%	18%	37%	35%
BA/BS w/out Completing AA/AS	3,128	13%	3,361	13%	3,235	12%	3,203	13%	3,245	13%	4%	13%	11%
Basic Skills Improvement	161	1%	166	1%	179	1%	152	1%	163	1%	1%	1%	1%
Certificate/License Maintenance	445	2%	498	2%	464	2%	399	2%	382	2%	-14%	2%	2%
Current Job/Career Advancement	658	3%	689	3%	638	2%	588	2%	558	2%	-15%	2%	4%
Educational Development	811	3%	788	3%	696	3%	605	2%	480	2%	-41%	3%	2%
HS Diploma/GED Certificate	194	1%	188	1%	169	1%	132	1%	110	0%	-43%	1%	1%
New Career Preparation	2,344	10%	2,494	9%	2,443	9%	2,287	9%	2,232	9%	-5%	9%	11%
Non-Credit to Credit Transition	23	0%	37	0%	41	0%	34	0%	24	0%	4%	0%	0%
Voc Cert/Degree w/out Transfer	412	2%	481	2%	490	2%	458	2%	453	2%	10%	2%	3%
Undecided	3,915	16%	4,081	15%	3,743	14%	3,620	14%	3,433	14%	-12%	15%	15%
Unreported	88	0%	73	0%	114	0%	73	0%	42	0%	-52%	0%	1%
Total	24,248	100%	26,386	100%	26,014	100%	25,468	100%	25,280	100%	4%	100%	100%

Source: SDCCD Information System

Mesa College Fact Book 2014

Headcount by Primary Language: On average, the majority of the Mesa College student population (93%) spoke English as their primary language. This was the same as all colleges in the District (93%). There was an increase for those who spoke a language other than English (33%), as well as for those who reported English as their primary language (2%).

Figure 1.7. Mesa College Headcount by Primary Language

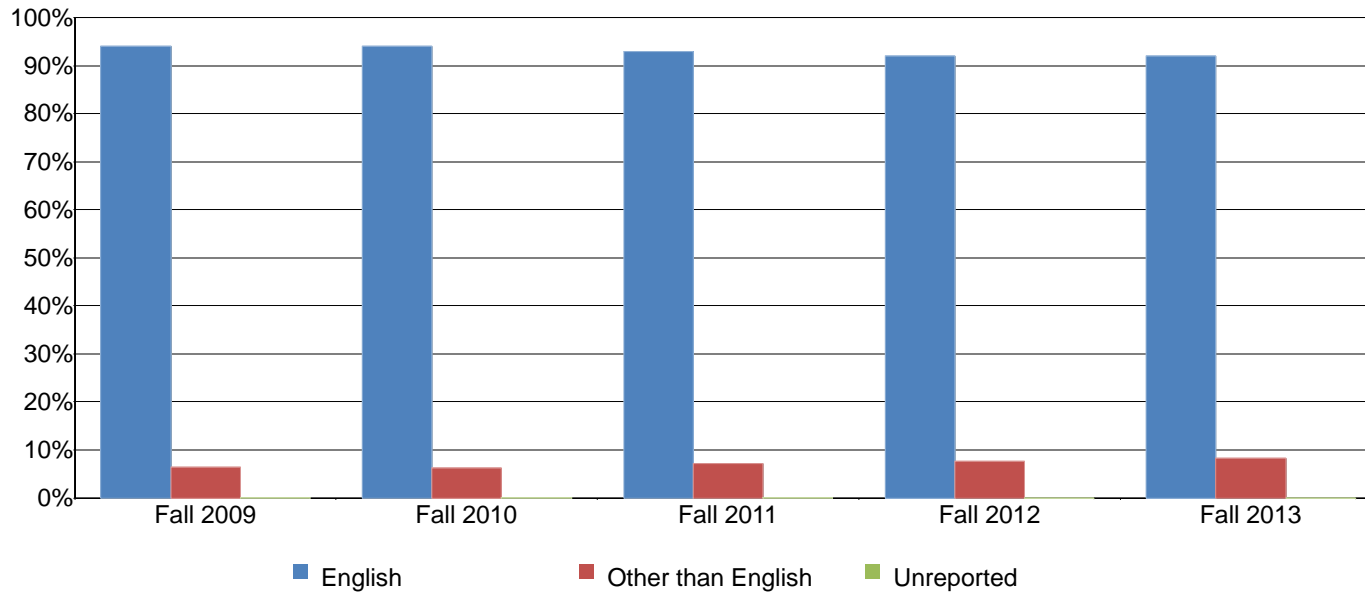


Table 1.7. Mesa College Headcount by Primary Language

	Fall 09		Fall 10		Fall 11		Fall 12		Fall 13		% Change Fall 09-13	College Average Fall 09-13	All Colleges Average Fall 09-13
English	22,684	94%	24,756	94%	24,158	93%	23,528	92%	23,199	92%	2%	93%	93%
Other than English	1,562	6%	1,626	6%	1,852	7%	1,939	8%	2,080	8%	33%	7%	7%
Unreported	2	0%	4	0%	4	0%	1	0%	1	0%	-50%	0%	0%
Total	24,248	100%	26,386	100%	26,014	100%	25,468	100%	25,280	100%	4%	100%	100%

Source: SDCCD Information System

Mesa College Fact Book 2014

Headcount by Prior Education Level: From Fall 2009 to Fall 2013, a majority of the Mesa College student population were high school graduates (69%), on average. Mesa students who had a foreign high school diploma, a high school diploma, or a GED/high school certificate increased 38%, 10%, and 9%, respectively, between Fall 2009 and Fall 2013.

Figure 1.8. Mesa College Headcount by Prior Education Level

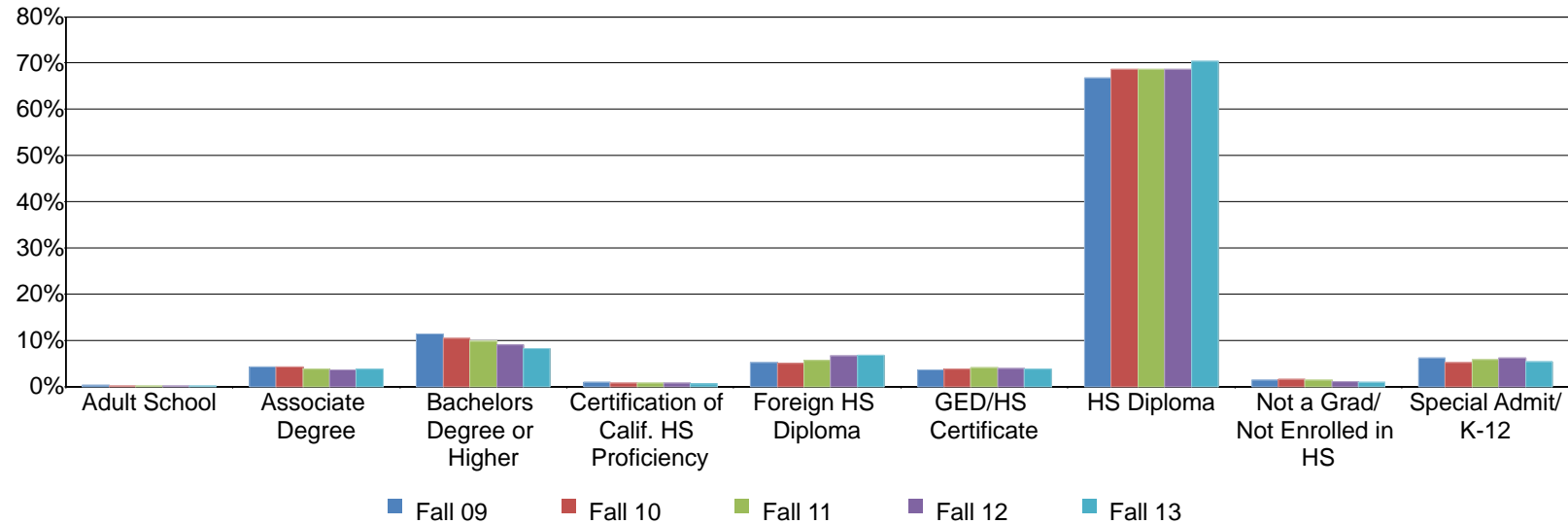


Table 1.8. Mesa College Headcount by Prior Education Level

	Fall 09		Fall 10		Fall 11		Fall 12		Fall 13		% Change Fall 09-13	College Average Fall 09-13	All Colleges Average Fall 09-13
Adult School	54	0%	50	0%	43	0%	35	0%	20	0%	-63%	0%	0%
Associate Degree	1,040	4%	1,125	4%	997	4%	926	4%	965	4%	-7%	4%	5%
Bachelors Degree or Higher	2,777	11%	2,777	11%	2,546	10%	2,302	9%	2,071	8%	-25%	10%	10%
Certification of Calif. HS Proficiency	205	1%	219	1%	199	1%	195	1%	160	1%	-22%	1%	1%
Foreign HS Diploma	1,251	5%	1,338	5%	1,461	6%	1,674	7%	1,731	7%	38%	6%	6%
GED/HS Certificate	887	4%	1,013	4%	1,046	4%	1,004	4%	971	4%	9%	4%	5%
HS Diploma	16,198	67%	18,096	69%	17,868	69%	17,465	69%	17,784	70%	10%	69%	68%
Not a Grad/Not Enrolled in HS	350	1%	392	1%	351	1%	290	1%	222	1%	-37%	1%	2%
Special Admit/K-12	1,486	6%	1,376	5%	1,503	6%	1,577	6%	1,356	5%	-9%	6%	4%
Total	24,248	100%	26,386	100%	26,014	100%	25,468	100%	25,280	100%	4%	100%	100%

Source: SDCCD Information System

Mesa College Fact Book 2014

Headcount by Service Area of Residence: Between Fall 2009 and Fall 2013, about one in three Mesa College students (31%) resided within the Mesa service area, on average. Another 27% resided in the City College service area. Thirty-two percent of the students who attended Mesa College resided outside of the SDCCCD service area.

Figure 1.9. Mesa College Headcount by Service Area of Residence

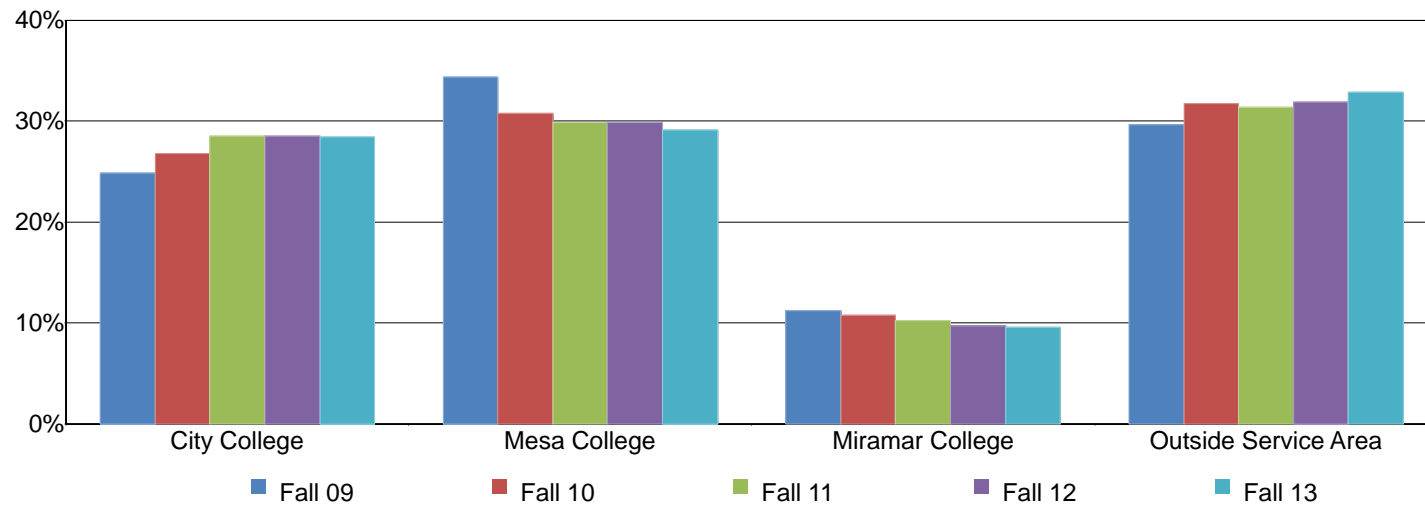


Table 1.9. Mesa College Headcount by Service Area of Residence

	Fall 09		Fall 10		Fall 11		Fall 12		Fall 13		% Change Fall 09-13	College Average Fall 09-13	All Colleges Average Fall 09-13
City College	6,016	25%	7,059	27%	7,424	29%	7,269	29%	7,196	28%	20%	27%	31%
Mesa College	8,326	34%	8,121	31%	7,774	30%	7,610	30%	7,356	29%	-12%	31%	21%
Miramar College	2,719	11%	2,834	11%	2,654	10%	2,478	10%	2,414	10%	-11%	10%	11%
Outside Service Area	7,187	30%	8,372	32%	8,162	31%	8,111	32%	8,314	33%	16%	32%	37%
Total	24,248	100%	26,386	100%	26,014	100%	25,468	100%	25,280	100%	4%	100%	100%

Source: SDCCD Information System

Mesa College Fact Book 2014

Headcount by First Generation: Between Fall 2009 and Fall 2013, on average, just over one quarter of Mesa students reported being first generation college students (26%). Those who were first generation college students displayed a 15% increase in headcount. By comparison, the number of students who indicated they were not first generation college students displayed a 1% increase.

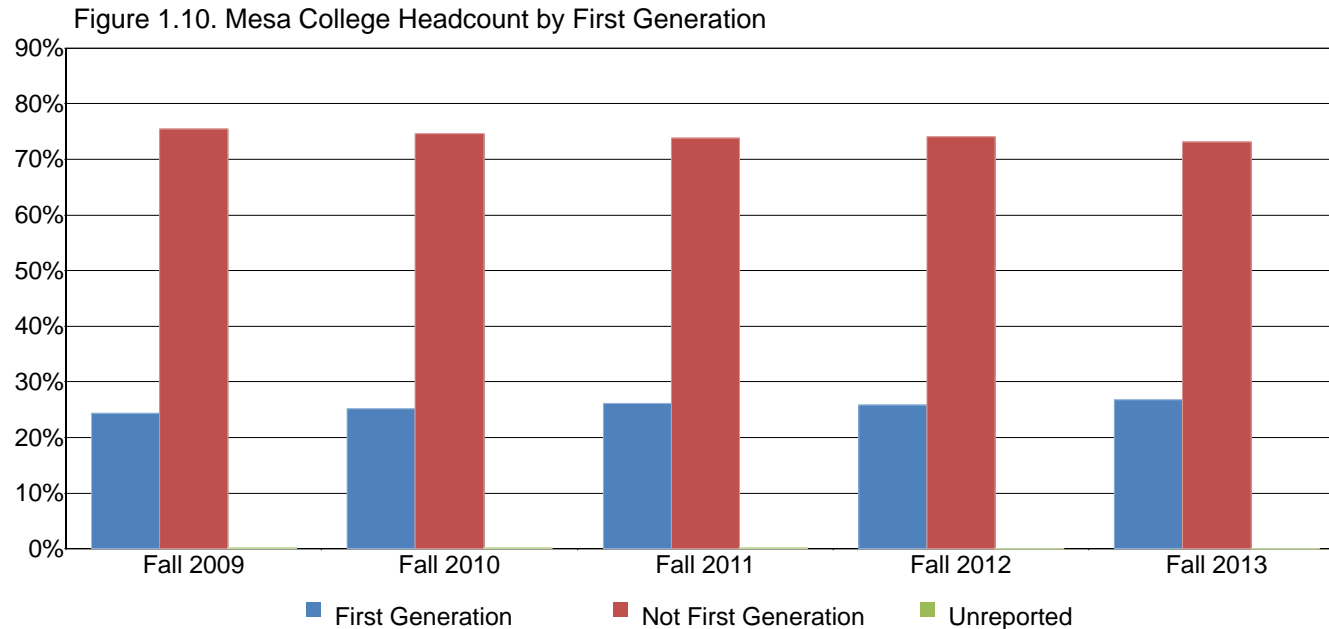


Table 1.10. Mesa College Headcount by First Generation

	Fall 09		Fall 10		Fall 11		Fall 12		Fall 13		% Change Fall 09-13	College Average Fall 09-13	All Colleges Average Fall 09-13
First Generation	5,898	24%	6,646	25%	6,795	26%	6,578	26%	6,780	27%	15%	26%	28%
Not First Generation	18,301	75%	19,699	75%	19,188	74%	18,865	74%	18,487	73%	1%	74%	72%
Unreported	49	0%	41	0%	31	0%	25	0%	13	0%	-73%	0%	0%
Total	24,248	100%	26,386	100%	26,014	100%	25,468	100%	25,280	100%	4%	100%	100%

Source: SDCCD Information System

Mesa College Fact Book 2014

Headcount by Residency Status: Between Fall 2009 and Fall 2013, on average, 95% of Mesa College's students were California residents and just 5% were non-residents. Between the five fall terms, the number of students who were non-residents increased 60%, and the number of students who were residents increased 2%.

Figure 1.11. Mesa College Headcount by Residency Status

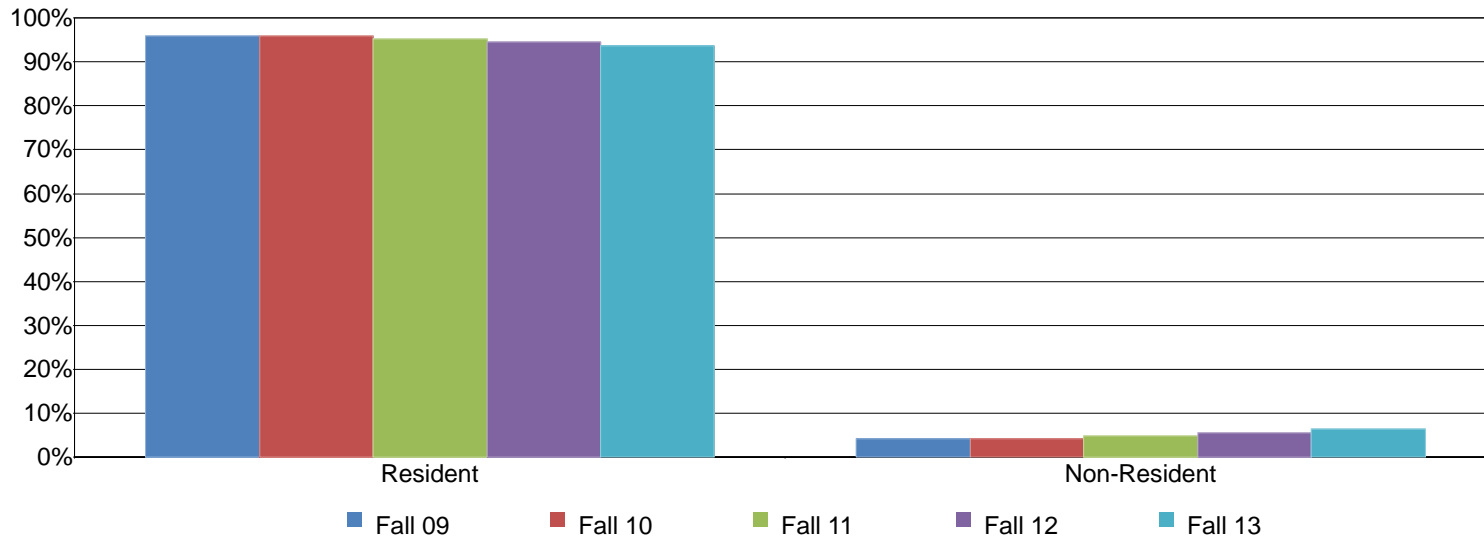


Table 1.11. Mesa College Headcount by Residency Status

	Fall 09		Fall 10		Fall 11		Fall 12		Fall 13		% Change Fall 09-13	College Average Fall 09-13	All Colleges Average Fall 09-13
Resident	23,259	96%	25,314	96%	24,766	95%	24,086	95%	23,697	94%	2%	95%	96%
Non-Resident	989	4%	1,072	4%	1,248	5%	1,382	5%	1,583	6%	60%	5%	4%
Total	24,248	100%	26,386	100%	26,014	100%	25,468	100%	25,280	100%	4%	100%	100%

Source: SDCCD Information System

Mesa College Fact Book 2014

Headcount by Disability Support Programs and Services (DSPS): On average, 3% of the Mesa College student population received disability support services between Fall 2009 and Fall 2013. This was comparable to the percentage of students served by DSPS for all colleges in the District. Moreover, the number of students who received disability services increased (43%) between Fall 2009 and Fall 2013, as did the number of students who did not receive services (3%).

Figure 1.12. Mesa College Headcount by Disability Support Programs and Services (DSPS)

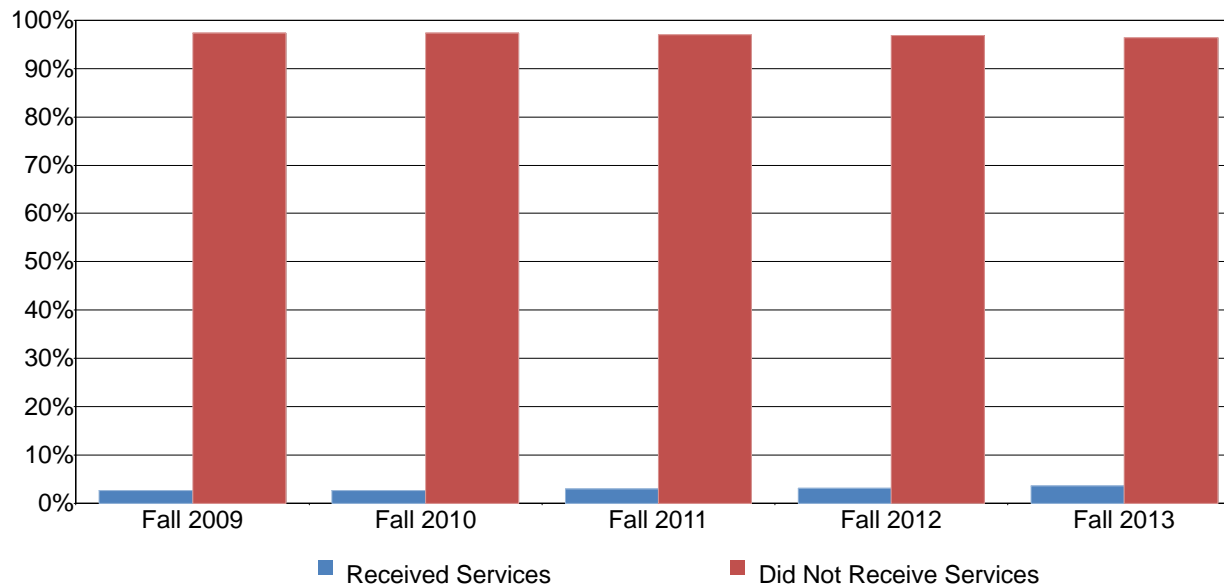


Table 1.12. Mesa College Headcount by Disability Support Programs and Services (DSPS)

	Fall 09		Fall 10		Fall 11		Fall 12		Fall 13		% Change Fall 09-13	College Average Fall 09-13	All Colleges Average Fall 09-13
Received Services	638	3%	710	3%	785	3%	808	3%	911	4%	43%	3%	3%
Did Not Receive Services	23,610	97%	25,676	97%	25,229	97%	24,660	97%	24,369	96%	3%	97%	97%
Total	24,248	100%	26,386	100%	26,014	100%	25,468	100%	25,280	100%	4%	100%	100%

Source: SDCCD Information System

Mesa College Fact Book 2014

Headcount by Extended Opportunity Programs and Services (EOPS): On average, 3% of the Mesa student population received EOPS services between Fall 2009 and Fall 2013. This was comparable to the percentage of students served by EOPS for all colleges in the District (3%). While students who received EOPS services decreased (7%), students who did not receive EOPS services increased (5%) between Fall 2009 and Fall 2013.

Figure 1.13. Mesa College Headcount by Extended Opportunity Programs and Services (EOPS)

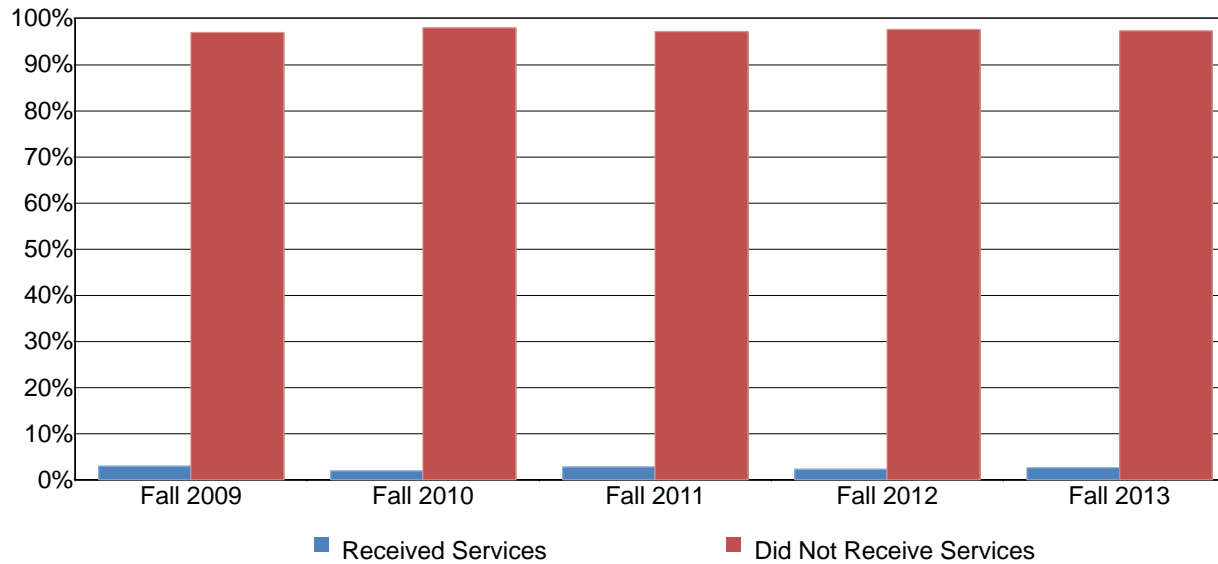


Table 1.13. Mesa College Headcount by Extended Opportunity Programs and Services (EOPS)

	Fall 09		Fall 10		Fall 11		Fall 12		Fall 13		% Change Fall 09-13	College Average Fall 09-13	All Colleges Average Fall 09-13
Received Services	728	3%	554	2%	732	3%	595	2%	679	3%	-7%	3%	3%
Did Not Receive Services	23,520	97%	25,832	98%	25,282	97%	24,873	98%	24,601	97%	5%	97%	97%
Total	24,248	100%	26,386	100%	26,014	100%	25,468	100%	25,280	100%	4%	100%	100%

Source: SDCCD Information System

Mesa College Fact Book 2014

Headcount by Day, Evening, & Online Status: On average, nearly half of Mesa College student population (47%) took day courses exclusively. Approximately one in five students (18%) took day and evening courses. From Fall 2009 to Fall 2013, the number of students that took evening courses exclusively decreased 16%. In contrast, students that took day and evening classes increased 6%, students who took both on-campus and online courses increased 32%, and students who took online courses only increased 7%.

Figure 1.14. Mesa College Headcount by Day, Evening, & Online Status

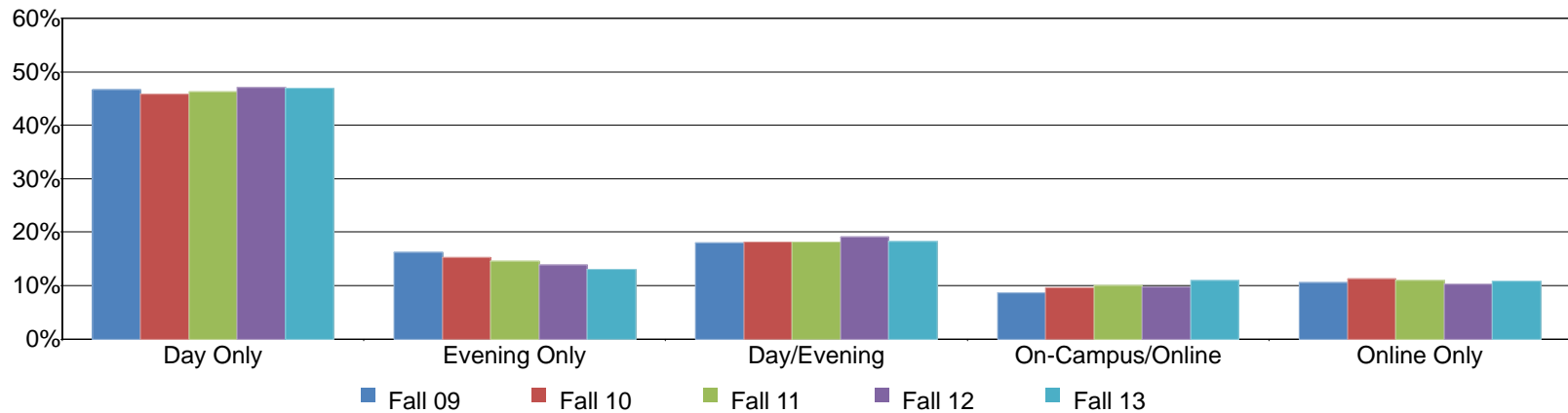


Table 1.14. Mesa College Headcount by Day, Evening, & Online Status

	Fall 09		Fall 10		Fall 11		Fall 12		Fall 13		% Change Fall 09-13	College Average Fall 09-13	All Colleges Average Fall 09-13
Day Only	11,309	47%	12,082	46%	12,026	46%	11,980	47%	11,860	47%	5%	47%	41%
Evening Only	3,935	16%	4,020	15%	3,784	15%	3,540	14%	3,298	13%	-16%	15%	14%
Day/Evening	4,362	18%	4,786	18%	4,735	18%	4,846	19%	4,621	18%	6%	18%	22%
On-Campus/Online	2,097	9%	2,545	10%	2,619	10%	2,471	10%	2,768	11%	32%	10%	15%
Online Only	2,545	10%	2,953	11%	2,850	11%	2,631	10%	2,733	11%	7%	11%	8%
Total	24,248	100%	26,386	100%	26,014	100%	25,468	100%	25,280	100%	4%	100%	100%

Source: SDCCD Information System

Mesa College Fact Book 2014

Headcount by Military Status: Over the past five fall terms, on average, 8% of Mesa College students were active duty military or veterans, and another 4% were dependents. Between Fall 2009 and Fall 2013, the number of active duty military and veteran students increased 75%, while the number of non-military students increased 2%, and the number of dependents decreased 34%.

Figure 1.15. Mesa College Headcount by Military Status

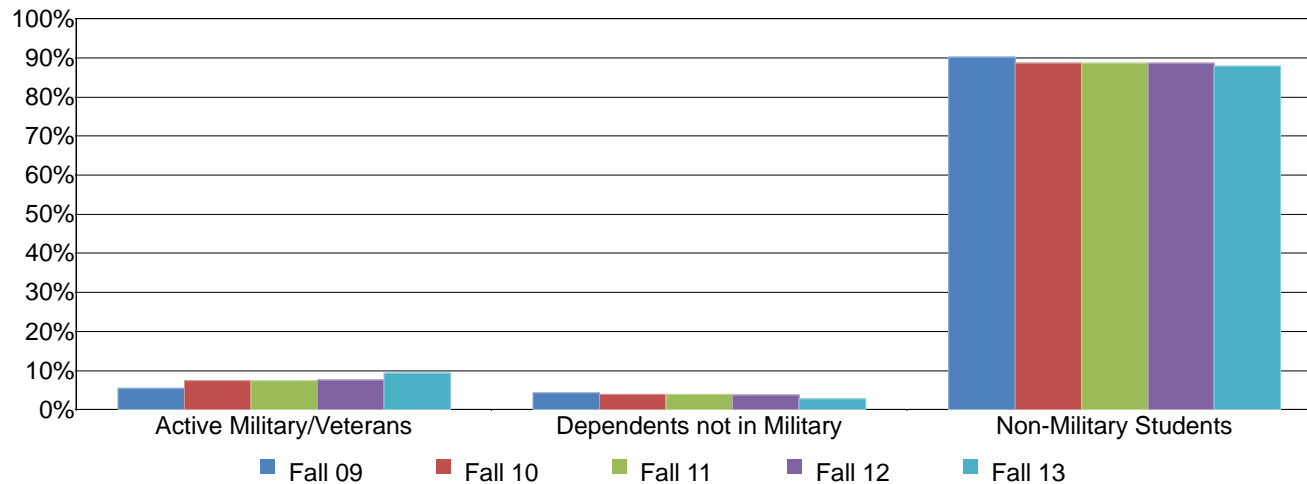


Table 1.15. Mesa College Headcount by Military Status

	Fall 09		Fall 10		Fall 11		Fall 12		Fall 13		% Change Fall 09-13	College Average Fall 09-13	All Colleges Average Fall 09-13
Active Military/Veterans	1,350	6%	1,963	7%	1,953	8%	1,958	8%	2,365	9%	75%	8%	8%
Dependents not in Military	1,038	4%	1,040	4%	1,023	4%	965	4%	690	3%	-34%	4%	3%
Non-Military Students	21,860	90%	23,383	89%	23,038	89%	22,545	89%	22,225	88%	2%	89%	89%
Total	24,248	100%	26,386	100%	26,014	100%	25,468	100%	25,280	100%	4%	100%	100%

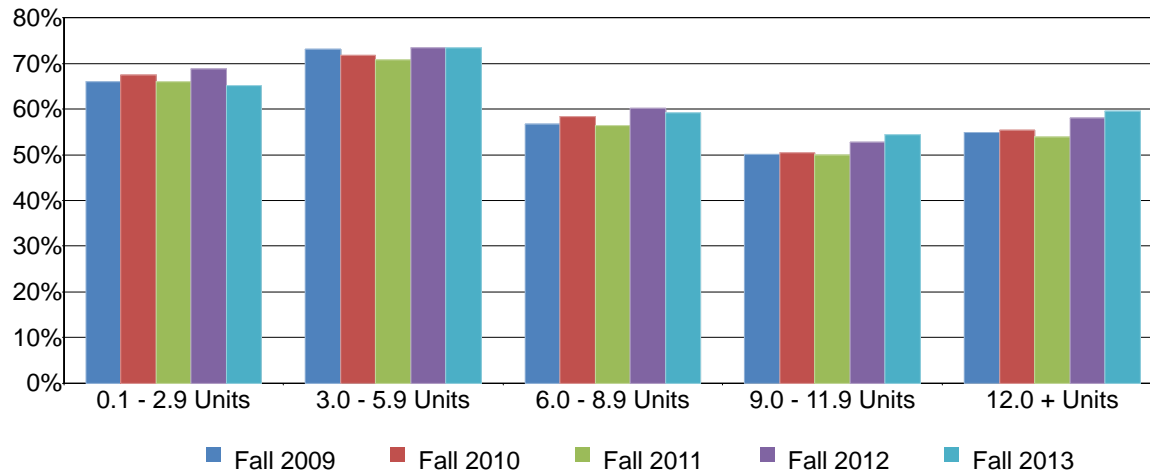
Source: SDCCD Information System

Note. The Dependents not in Military category consists of dependents/spouses of military personnel that are not an active military/veteran.

Mesa College Fact Book 2014

Headcount by Units Attempted by Units Earned: Table 1.16 shows the interplay between units attempted (in rows) and units earned (in columns). On average, the greatest proportion of students who earned all of the units they attempted were those students in the 3.0 to 5.9 unit range (73%). The smallest proportion of students who earned all the units they attempted were those students in the 9.0 to 11.9 unit range (52%). The number of students who attempted and earned 9.0 to 11.9 units increased 23% and the number of students who attempted and earned 12.0 or more units increased 22%, while the number of students who attempted and earned between 0.1 and 2.9 units decreased 40% between Fall 2009 and Fall 2013.

Figure 1.16. Mesa College Headcount by Units Attempted by Units Earned



Mesa College Fact Book 2014

Table 1.16. Mesa College Headcount by Units Attempted by Units Earned

		Units Earned						
		0 Units	0.1 - 2.9 Units	3.0 - 5.9 Units	6.0 - 8.9 Units	9.0 - 11.9 Units	12.0 + Units	
Units Attempted	Fall 2009	0.1 - 2.9 Units	34%	66%				
		3.0 - 5.9 Units	26%	1%	73%			
		6.0 - 8.9 Units	19%	2%	23%	57%		
		9.0 - 11.9 Units	14%	1%	14%	21%	50%	
		12.0 + Units	7%	1%	7%	12%	18%	55%
Fall 2010	0.1 - 2.9 Units	33%	67%					
	3.0 - 5.9 Units	27%	2%	72%				
	6.0 - 8.9 Units	19%	2%	21%	58%			
	9.0 - 11.9 Units	15%	2%	13%	20%	50%		
	12.0 + Units	8%	1%	7%	11%	18%	55%	
Fall 2011	0.1 - 2.9 Units	34%	66%					
	3.0 - 5.9 Units	28%	1%	71%				
	6.0 - 8.9 Units	19%	2%	23%	56%			
	9.0 - 11.9 Units	14%	1%	14%	20%	50%		
	12.0 + Units	7%	1%	7%	12%	18%	54%	
Fall 2012	0.1 - 2.9 Units	31%	69%					
	3.0 - 5.9 Units	25%	1%	73%				
	6.0 - 8.9 Units	17%	1%	21%	60%			
	9.0 - 11.9 Units	13%	1%	13%	20%	53%		
	12.0 + Units	6%	1%	6%	11%	18%	58%	
Fall 2013	0.1 - 2.9 Units	35%	65%					
	3.0 - 5.9 Units	25%	1%	73%				
	6.0 - 8.9 Units	18%	1%	21%	59%			
	9.0 - 11.9 Units	12%	1%	13%	20%	54%		
	12.0 + Units	6%	1%	6%	11%	17%	60%	
% Change Fall 09-13		---	-40%	1%	15%	23%	22%	
Average Fall 09-13		---	67%	73%	58%	52%	56%	

Source: SDCCD Information System

Note. Percent change and average were based on counts.

Section II Persistence Rates

Mesa College Fact Book 2014

This section of the Fact Book contains information on the term and annual persistence rates for first-time to college students. For purposes of this report, the term persistence rate is the percentage of first-time to college students who enrolled in a fall term as of official census who received a grade notation of A, B, C, D, F, P, NP, I, or RD and who enrolled in at least one course in the subsequent spring term and received a grade notation of A, B, C, D, F, P, NP, I, or RD (SDSU and UCSD-only students and sections are excluded. Intersession, tutoring, in-service, and cancelled classes are excluded). Annual persistence follows the same operational definition; however, student enrollments are tracked from fall to spring to fall.

The information in this section includes five years of data and is reported as follows:

- 1) Overall
- 2) Gender
- 3) Ethnicity
- 4) Age

Mesa College Fact Book 2014

Overall Persistence: The average term persistence rates of first-time students at Mesa College was 72% among the Fall 2008 to Fall 2013 cohorts, and the average annual persistence rate among the Fall 2008 to Fall 2012 cohorts was 49%. Overall, term persistence rates increased six percentage points, from 68% in Fall 2008 to 74% in Fall 2013. Annual persistence rates increased six percentage points, from 47% in Fall 2008 to 53% in Fall 2012. The average term and annual persistence rates of first-time Mesa College students were lower compared to the average term and annual persistence rate of first-time students enrolled in all colleges in the District (76% & 54%, respectively).

Figure 2.1. Mesa College First-Time Student Overall Annual Persistence

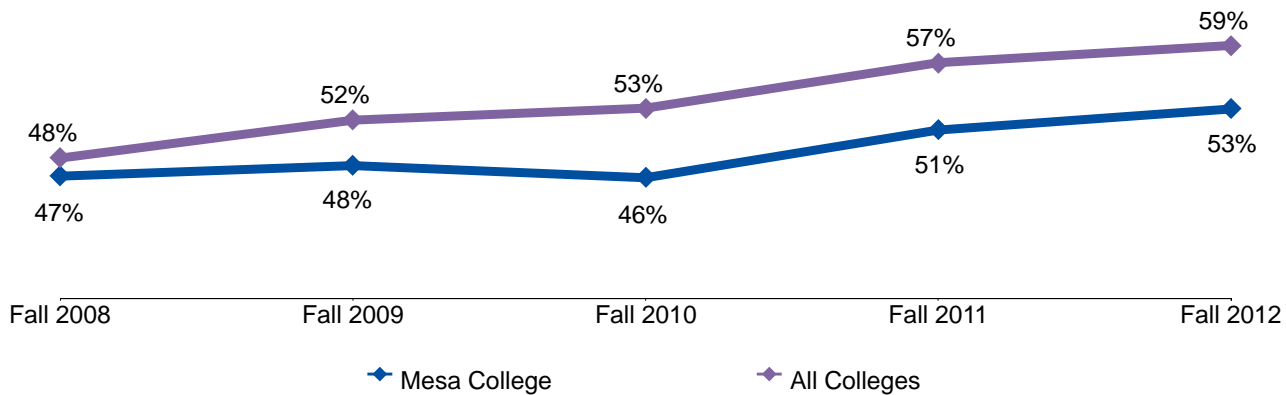


Table 2.1. Mesa College First-Time Student Overall Term and Annual Persistence

Cohort	Fall Enrolled Cohort	Term Persistence Counts	Term Persistence Rates	Annual Persistence Counts	Annual Persistence Rates	All Colleges Term Persistence	All Colleges Annual Persistence
Fall 2008	1,658	1,134	68%	772	47%	69%	48%
Fall 2009	1,787	1,240	69%	850	48%	72%	52%
Fall 2010	2,200	1,555	71%	1,021	46%	76%	53%
Fall 2011	2,293	1,697	74%	1,167	51%	78%	57%
Fall 2012	2,296	1,708	74%	1,215	53%	79%	59%
Fall 2013	2,223	1,647	74%	---	---	78%	---
Total/Average	12,457	8,981	72%	5,025	49%	76%	54%

Source: SDCCD Information System

Note. Overall annual persistence counts and rates exclude the Fall 2013 cohort due to the unavailability of Fall 2014 data.

Mesa College Fact Book 2014

Annual Persistence by Gender: On average, annual persistence rates of female students (51%) were higher than their male student counterpart (47%) between the Fall 2008 and Fall 2012 cohorts. Persistence rates for both female and male students increased three percentage points and 10 percentage points, respectively, between the Fall 2008 and Fall 2012 cohorts.

Figure 2.2. Mesa College First-Time Student Annual Persistence by Gender

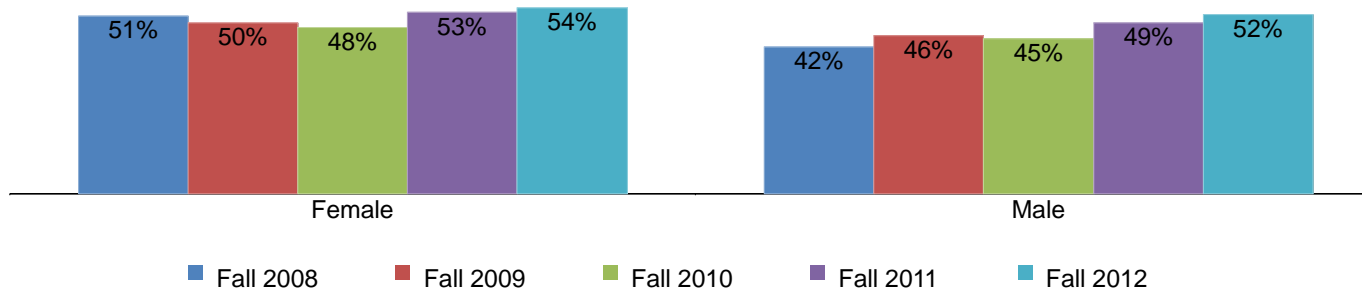


Table 2.2. Mesa College First-Time Student Annual Persistence by Gender

Cohort	Female			Male		
	Fall Enrolled Cohort	Annual Persistence Counts	Annual Persistence Rates	Fall Enrolled Cohort	Annual Persistence Counts	Annual Persistence Rates
Fall 2008	777	399	51%	880	373	42%
Fall 2009	842	417	50%	945	433	46%
Fall 2010	1,049	504	48%	1,151	517	45%
Fall 2011	1,022	538	53%	1,271	629	49%
Fall 2012	1,148	618	54%	1,147	596	52%
Total/Average	4,838	2,476	51%	5,394	2,548	47%

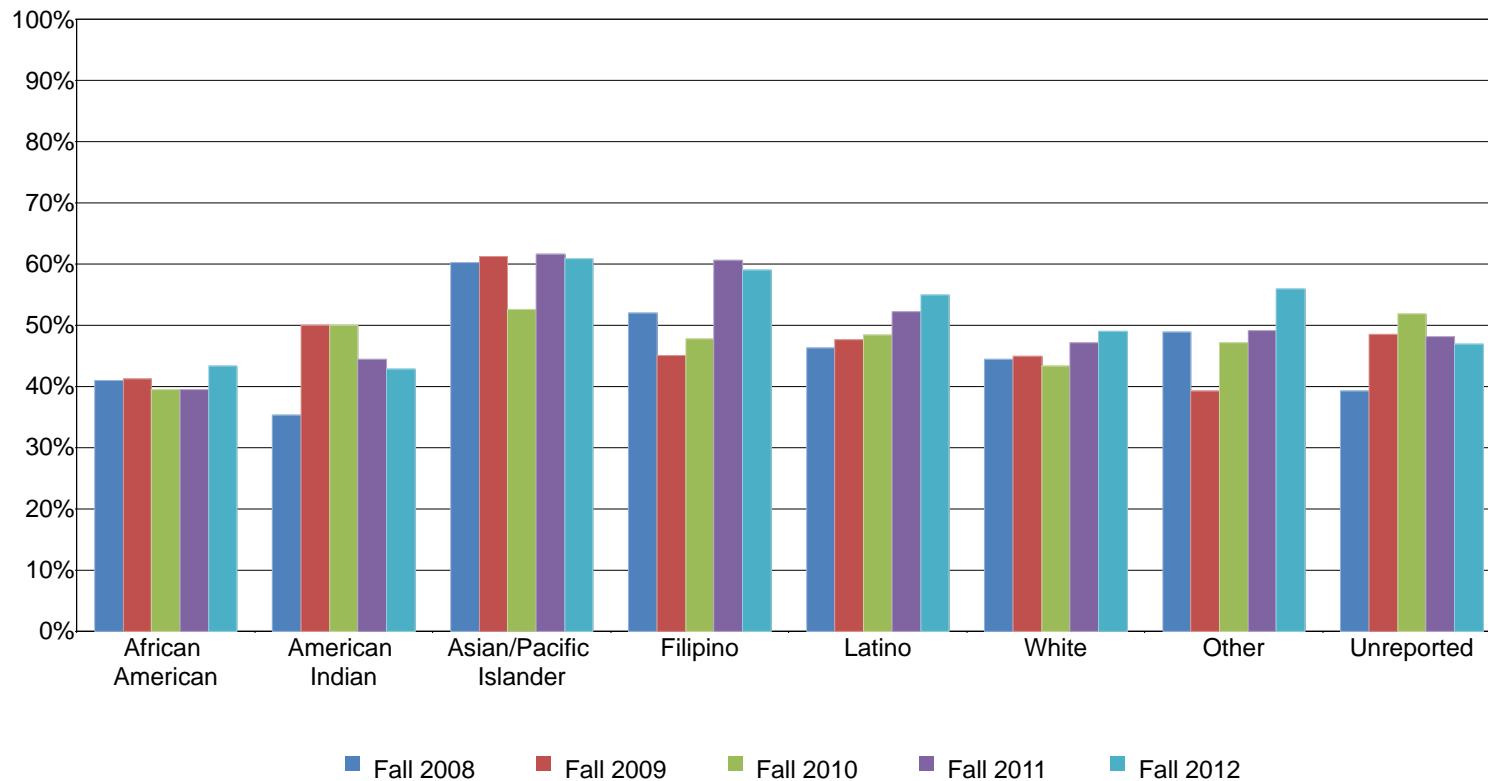
Source: SDCCD Information System

Note. Due to a low student cohort count, 'Unreported' students are excluded from the analysis.

Mesa College Fact Book 2014

Annual Persistence by Ethnicity: The ethnic groups with the highest annual persistence rates, on average, were Asian/Pacific Islander students (59%), Filipino students (53%), and Latino students (51%). Annual persistence rates increased for all ethnic groups between Fall 2008 and Fall 2012. Latino and American Indian student persistence rates had the greatest increase over this five year period, increasing nine percentage points, and eight percentage points, respectively.

Figure 2.3. Mesa College First-Time Student Annual Persistence by Ethnicity



Mesa College Fact Book 2014

Table 2.3. Mesa College First-Time Student Annual Persistence by Ethnicity

Cohort	African American			American Indian			Asian/Pacific Islander			Filipino		
	Fall Enrolled Cohort	Annual Persistence Counts	Annual Persistence Rates	Fall Enrolled Cohort	Annual Persistence Counts	Annual Persistence Rates	Fall Enrolled Cohort	Annual Persistence Counts	Annual Persistence Rates	Fall Enrolled Cohort	Annual Persistence Counts	Annual Persistence Rates
Fall 2008	105	43	41%	17	6	35%	199	120	60%	77	40	52%
Fall 2009	160	66	41%	10	5	50%	245	150	61%	71	32	45%
Fall 2010	172	68	40%	10	5	50%	234	123	53%	88	42	48%
Fall 2011	142	56	39%	9	4	44%	258	159	62%	89	54	61%
Fall 2012	171	74	43%	7	3	43%	243	148	61%	78	46	59%
Total/Average	750	307	41%	53	23	43%	1,179	700	59%	403	214	53%

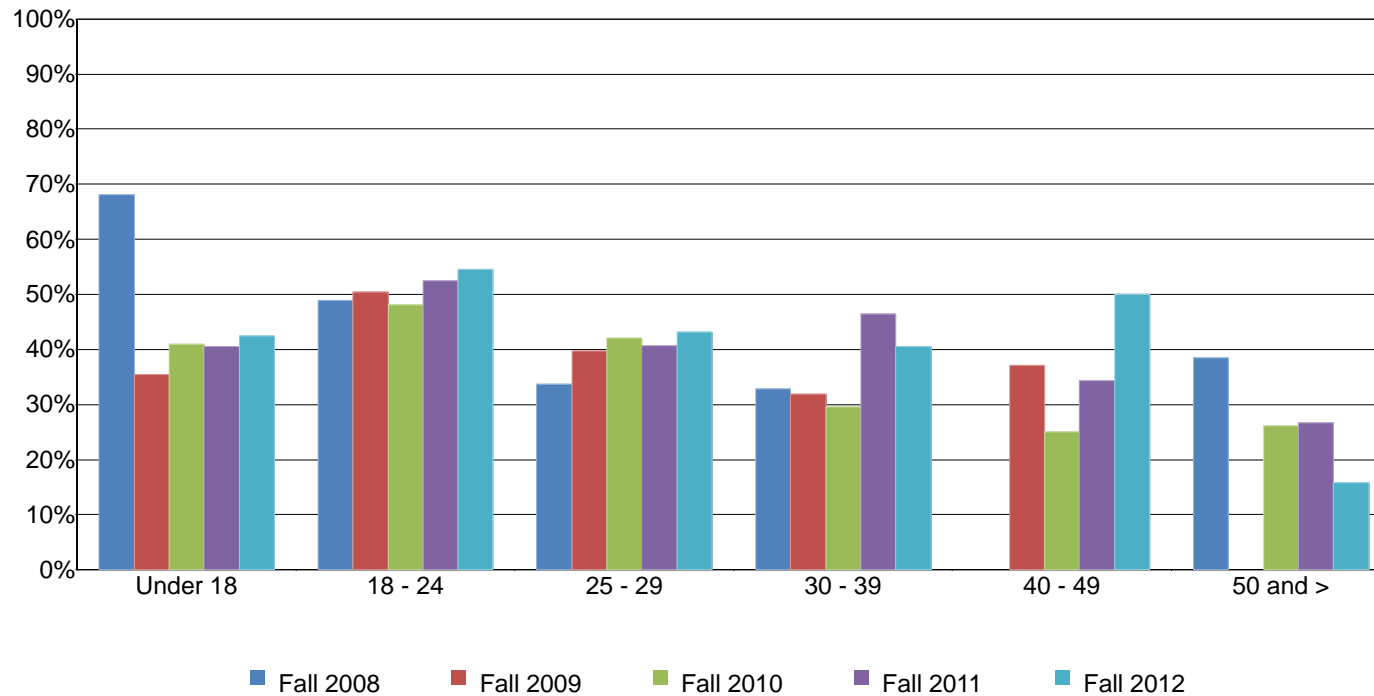
Cohort	Latino			White			Other			Unreported		
	Fall Enrolled Cohort	Annual Persistence Counts	Annual Persistence Rates	Fall Enrolled Cohort	Annual Persistence Counts	Annual Persistence Rates	Fall Enrolled Cohort	Annual Persistence Counts	Annual Persistence Rates	Fall Enrolled Cohort	Annual Persistence Counts	Annual Persistence Rates
Fall 2008	395	183	46%	688	306	44%	47	23	49%	130	51	39%
Fall 2009	489	233	48%	639	287	45%	74	29	39%	99	48	48%
Fall 2010	798	386	48%	733	318	43%	138	65	47%	27	14	52%
Fall 2011	876	457	52%	709	334	47%	183	90	49%	27	13	48%
Fall 2012	909	499	55%	704	345	49%	152	85	56%	32	15	47%
Total/Average	3,467	1,758	51%	3,473	1,590	46%	594	292	49%	315	141	45%

Source: SDCCD Information System

Mesa College Fact Book 2014

Annual Persistence by Age: A general trend among the Fall 2008 to the Fall 2012 cohorts showed as age increased, annual persistence rates decreased. On average, annual persistence rates for students between ages 18 and 24 and students under age 18 had the highest persistence rates (51% & 43%, respectively). Annual persistence rates increased by 50 percentage points between the Fall 2008 and Fall 2012 cohorts for students ages 40-49, and nine percentage points for those in the 25-29 age group.

Figure 2.4. Mesa College First-Time Student Annual Persistence by Age



Mesa College Fact Book 2014

Table 2.4. Mesa College First-Time Student Annual Persistence by Age

Cohort	Under 18			18 - 24			25 - 29		
	Fall Enrolled Cohort	Annual Persistence Counts	Annual Persistence Rates	Fall Enrolled Cohort	Annual Persistence Counts	Annual Persistence Rates	Fall Enrolled Cohort	Annual Persistence Counts	Annual Persistence Rates
Fall 2008	22	15	68%	1,410	689	49%	104	35	34%
Fall 2009	48	17	35%	1,482	748	50%	131	52	40%
Fall 2010	44	18	41%	1,901	914	48%	126	53	42%
Fall 2011	42	17	40%	1,987	1,043	52%	145	59	41%
Fall 2012	40	17	43%	2,019	1,101	55%	123	53	43%
Total/Average	196	84	43%	8,799	4,495	51%	629	252	40%

Cohort	30 - 39			40 - 49			50 and >		
	Fall Enrolled Cohort	Annual Persistence Counts	Annual Persistence Rates	Fall Enrolled Cohort	Annual Persistence Counts	Annual Persistence Rates	Fall Enrolled Cohort	Annual Persistence Counts	Annual Persistence Rates
Fall 2008	70	23	33%	26	0	0%	26	10	38%
Fall 2009	72	23	32%	27	10	37%	27	0	0%
Fall 2010	78	23	29%	28	7	25%	23	6	26%
Fall 2011	69	32	46%	35	12	34%	15	4	27%
Fall 2012	69	28	41%	26	13	50%	19	3	16%
Total/Average	358	129	36%	142	42	30%	110	23	21%

Source: SDCCD Information System

Section III Student Completion

Mesa College Fact Book 2014

This section of the Fact Book contains information on various student completion outcomes which may be considered indirect assessments of student learning. The outcomes included in this section are: 1) Annual Successful Course Completion Rates, 2) Annual Retention Rates, 3) Annual GPA, 4) Annual Awards Conferred, and 5) Annual Transfer Volume. All of the information in this section includes five years of data by gender, age, and ethnicity. The following describes in detail each of the outcomes listed.

- 1) Successful Course Completion Rates. The first outcome reported in this section is successful course completion, or student success rate. For purposes of this report, the success rate is the percentage of students who complete a course with a grade of A, B, C, or P out of total official census enrollments. Tutoring, non-credit, and cancelled classes are excluded.
- 2) Retention Rates. The second outcome reported in this section is retention rate. For purposes of this report, the retention rate is the percentage of students who complete a course with a grade of A, B, C, D, F, P, NP, I or RD out of total official census enrollments. Tutoring and cancelled classes are excluded.
- 3) Annual GPA. The third outcome reported in this section is annual GPA. For purposes of this report, the annual GPA is the total grade point average of all students for a given academic year.
- 4) Annual Awards Conferred. The fourth outcome reported in this section is the annual awards conferred. For purposes of this report, the annual awards conferred are the total number of associate degrees and certificates awarded in a single academic year (summer, fall, and spring). *Note. Annual awards conferred that are reported in this Fact Book are considered preliminary data. Please see the upcoming Awards Conferred Supplement report for final annual awards conferred numbers.*
- 5) Annual Transfer Volume. The last outcome reported in this section is the number of students who transferred annually. For the purposes of this report, the annual transfer volume represents the total number of students who transferred to a 4-year institution and were enrolled at an SDCCD college at any time within six semesters prior to transferring (including stop outs). The student must also have completed 12 or more transferrable units from any one of the SDCCD credit colleges within six years prior to transferring to a 4-year institution. *Note. Transfer volume parameters were changed for this report. Final data is now reported for 2008/09 – 2012/13. Additionally, due to entry requirements at the CSU/UCs that delay transferring, the number of semesters prior to transferring was increased from three to six. Thus, totals will be different when comparing historical terms to previous editions of the Fact Book. Please see the 2014 SDCCD Transfer Report: A Longitudinal Perspective for comparable transfer volume numbers.*

Mesa College Fact Book 2014

Overall Success Rates: Mesa College annual success rates increased by two percentage points from 2009/10 to 2013/14, with a five-year average of 69%. This success rate average was slightly higher than the success rate average of all colleges in the District (68%). The Mesa College annual success rates were the same in each year compared to the annual success rates of all colleges in the District.

Figure 3.1. Mesa College Overall Success Rates

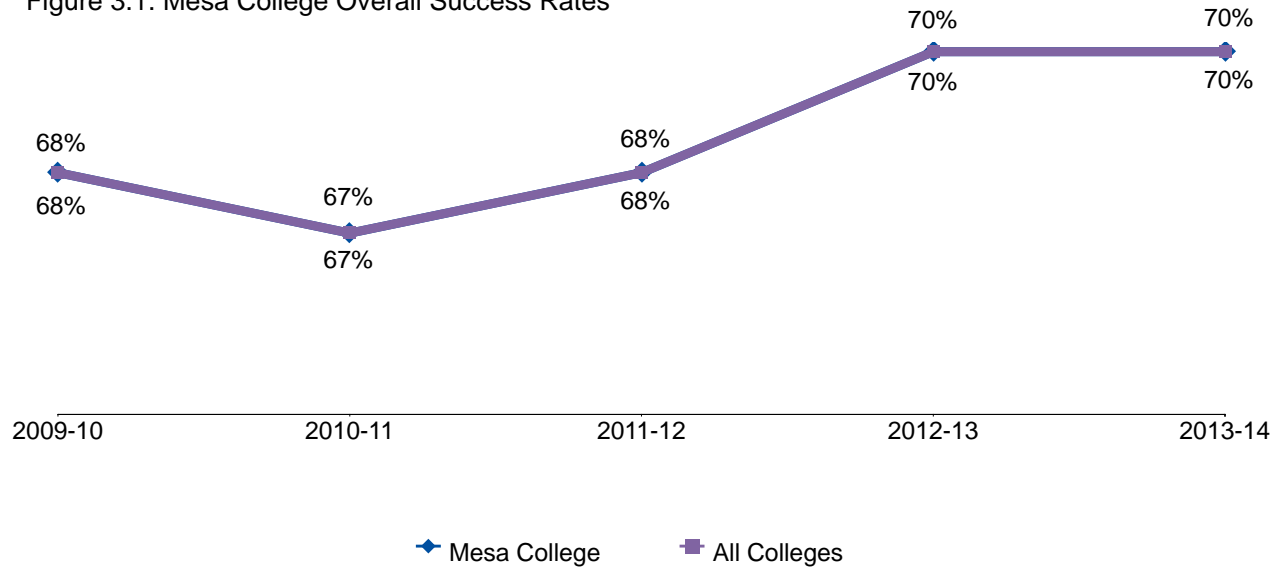


Table 3.1. Mesa College Overall Success Rates

	2009-10	2010-11	2011-12	2012-13	2013-14	% Difference 09/10 - 13/14	College Average 09/10 - 13/14	All Colleges Average 09/10 - 13/14
Average	68%	67%	68%	70%	70%	2%	69%	68%

Source: SDCCD Information System

Mesa College Fact Book 2014

Success Rates by Gender: On average, female students had higher success rates (70%) than their male student counterpart (67%) between 2009/10 and 2013/14. At Mesa College, female and male student average success rates were comparable to the average success rates of the female and male student populations of all colleges in the District (69% & 68%, respectively). The success rates for female and male students at Mesa College increased between 2009/10 and 2013/14 by one percentage point and two percentage points, respectively.

Figure 3.2. Mesa College Success Rates by Gender

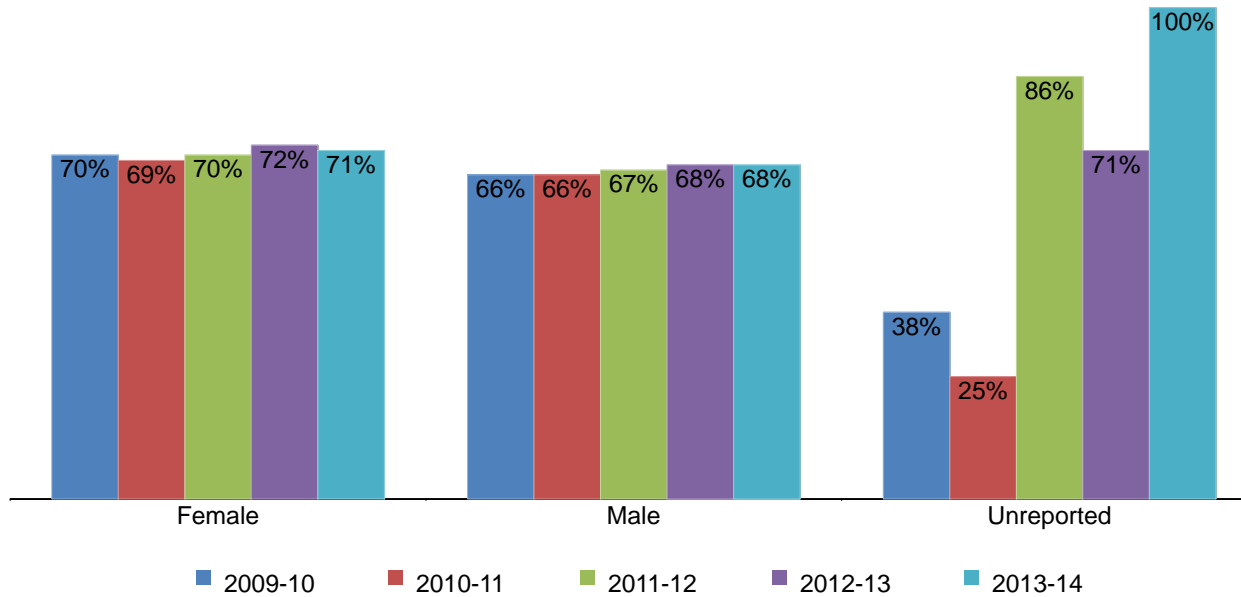


Table 3.2. Mesa College Success Rates by Gender

	2009-10	2010-11	2011-12	2012-13	2013-14	% Difference 09/10 - 13/14	College Average 09/10 - 13/14	All Colleges Average 09/10 - 13/14
Female	70%	69%	70%	72%	71%	1%	70%	69%
Male	66%	66%	67%	68%	68%	2%	67%	68%
Unreported	38%	25%	86%	71%	100%	62%	66%	75%
Average	68%	67%	68%	70%	70%	2%	69%	68%

Source: SDCCD Information System

Note. Unreported cells may have fewer than 25 students in a given year.

Mesa College Fact Book 2014

Success Rates by Ethnicity: On average, the ethnic groups with the highest success rates between 2009/10 and 2013/14 were Asian/Pacific Islander students (74%), White students (73%), and Filipino students (70%). The average success rates of African American students (57%), Latino students (64%), and students categorized as "Other" ethnicities (67%) were lower than the average success rates of the general student populations at Mesa College and all colleges in the District (69% & 68%, respectively). All reported ethnic groups showed increases in success rates between 2009/10 and 2013/14.

Figure 3.3. Mesa College Success Rates by Ethnicity

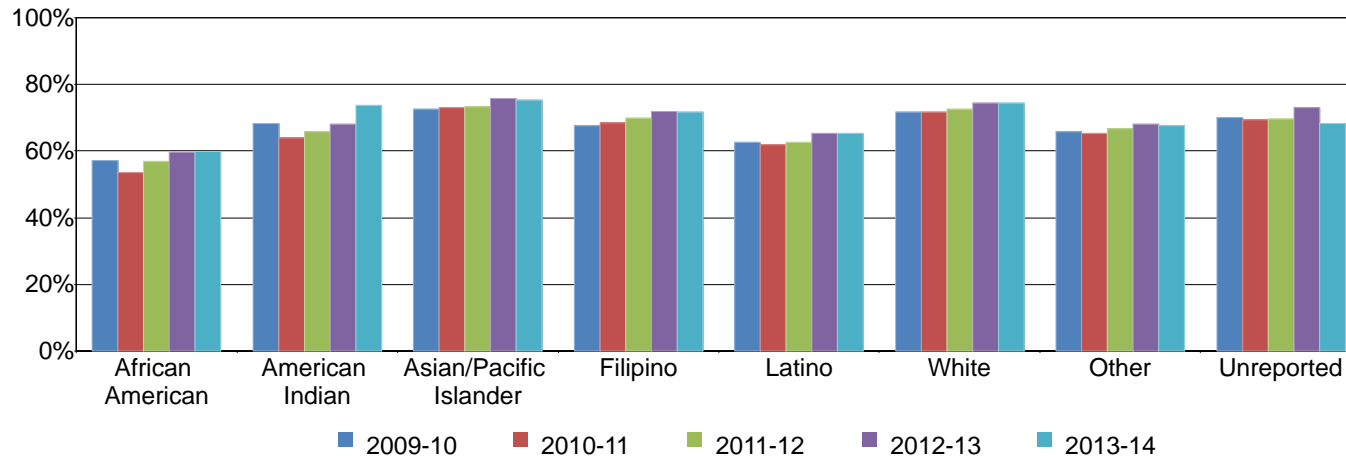


Table 3.3. Mesa College Success Rates by Ethnicity

	2009-10	2010-11	2011-12	2012-13	2013-14	% Difference 09/10 - 13/14	College Average 09/10 - 13/14	All Colleges Average 09/10 - 13/14
African American	57%	54%	57%	60%	60%	3%	57%	57%
American Indian	68%	64%	66%	68%	74%	6%	68%	68%
Asian/Pacific Islander	73%	73%	73%	76%	75%	2%	74%	74%
Filipino	68%	69%	70%	72%	72%	4%	70%	71%
Latino	63%	62%	63%	65%	65%	2%	64%	64%
White	72%	72%	73%	74%	74%	2%	73%	74%
Other	66%	65%	67%	68%	68%	2%	67%	67%
Unreported	70%	69%	70%	73%	68%	-2%	70%	70%
Average	68%	67%	68%	70%	70%	2%	69%	68%

Source: SDCCD Information System

Mesa College Fact Book 2014

Success Rates by Age: With the exception of students under age 18, a general trend between 2009/10 and 2013/14 showed as age increased, so did the average success rate. Students under age 18 had the highest success rate on average (87%). The average success rates of most age groups were higher than the average success rates of the general student populations at Mesa College and all colleges in the District (69% & 68%, respectively).

Figure 3.4. Mesa College Success Rates by Age

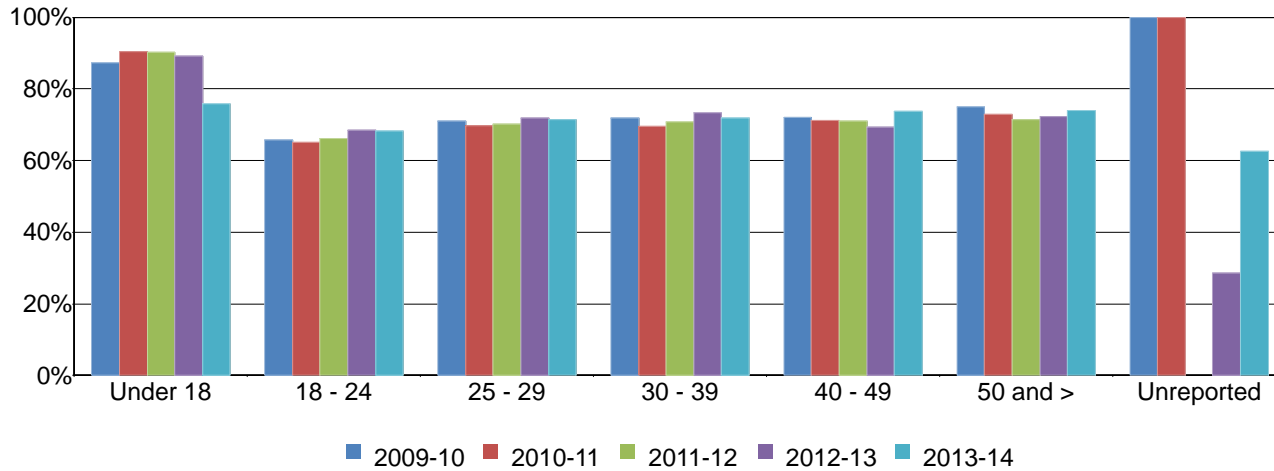


Table 3.4. Mesa College Success Rates by Age

	2009-10	2010-11	2011-12	2012-13	2013-14	% Difference 09/10 - 13/14	College Average 09/10 - 13/14	All Colleges Average 09/10 - 13/14
Under 18	87%	90%	90%	89%	76%	-11%	87%	85%
18 - 24	66%	65%	66%	68%	68%	2%	67%	66%
25 - 29	71%	70%	70%	72%	72%	1%	71%	71%
30 - 39	72%	70%	71%	73%	72%	0%	72%	72%
40 - 49	72%	71%	71%	69%	74%	2%	71%	73%
50 and >	75%	73%	71%	72%	74%	-1%	73%	74%
Unreported	100%	100%	---	29%	63%	-37%	---	63%
Average	68%	67%	68%	70%	70%	2%	69%	68%

Source: SDCCD Information System

Note. Unreported cells may have fewer than 25 students in a given year.

Mesa College Fact Book 2014

Overall Retention Rates: Mesa College's annual retention rates increased two percentage points between 2009/10 and 2013/14, with a five-year average of 85%. This retention rate average was equal to the retention rate average of all colleges in the District (85%). The Mesa College annual retention rates generally mirrored the annual retention rates of all colleges in the District between 2009/10 and 2013/14.

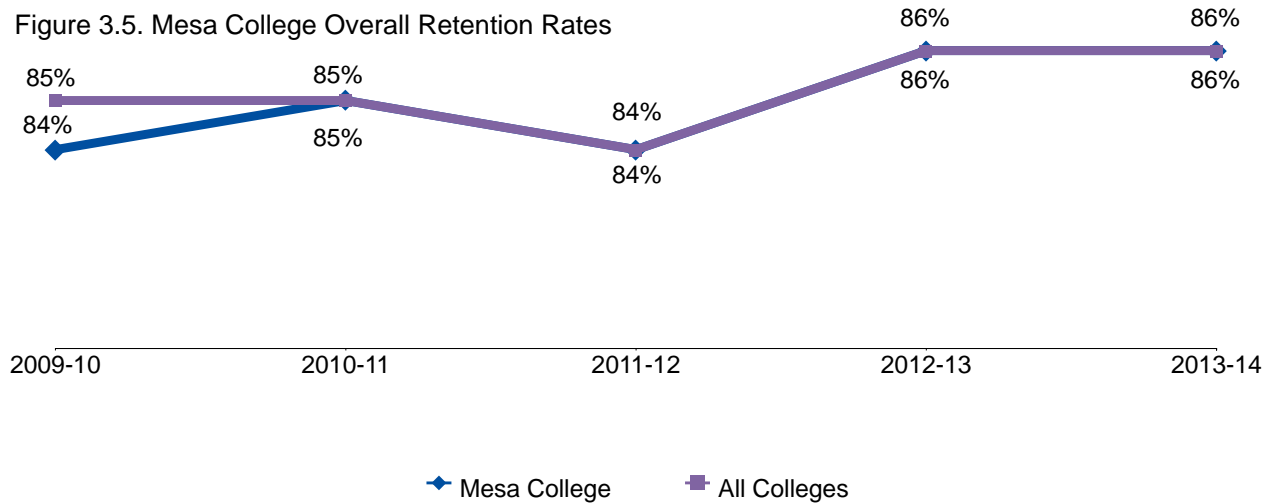


Table 3.5. Mesa College Overall Retention Rates

	2009-10	2010-11	2011-12	2012-13	2013-14	% Difference 09/10 - 13/14	College Average 09/10 - 13/14	All Colleges Average 09/10 - 13/14
Average	84%	85%	84%	86%	86%	2%	85%	85%

Source: SDCCD Information System

Mesa College Fact Book 2014

Retention Rates by Gender: On average, female student retention rates were comparable to their male student counterpart (85% & 84%, respectively) between 2009/10 and 2013/14. The average retention rates of both female and male students at Mesa College were comparable to the average retention rates of the female and male student populations of all colleges in the District (85% each). Furthermore, both female and male students at Mesa College had average retention rates comparable to the average retention rates of the general student populations of both Mesa College and all colleges in the District (85% each) between 2009/10 and 2013/14.

Figure 3.6. Mesa College Retention Rates by Gender

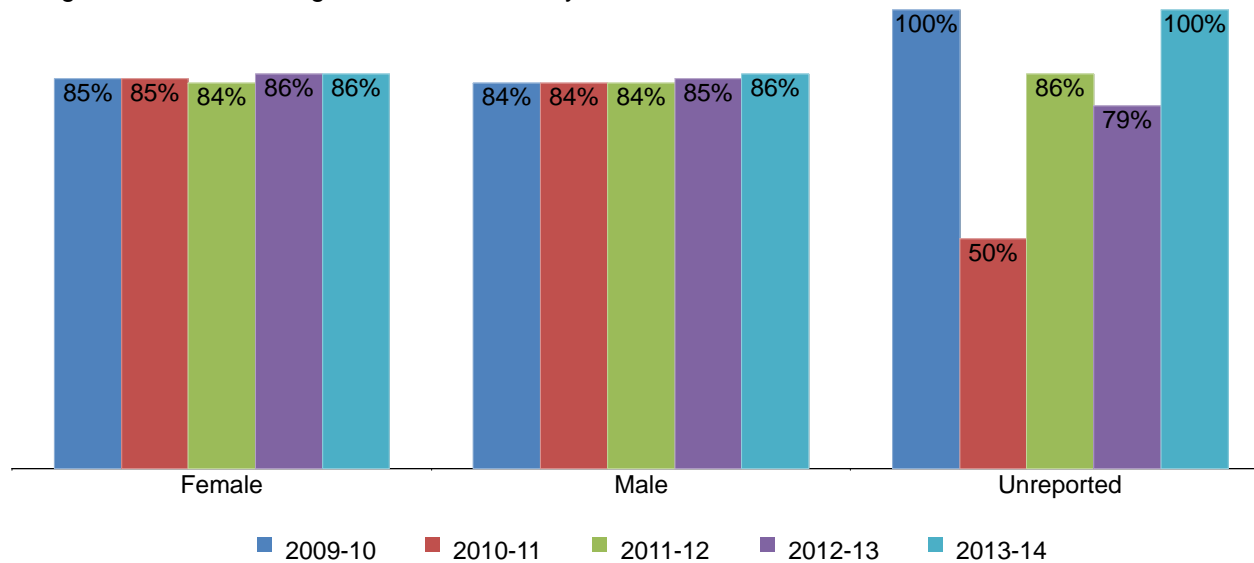


Table 3.6. Mesa College Retention Rates by Gender

	2009-10	2010-11	2011-12	2012-13	2013-14	% Difference 09/10 - 13/14	College Average 09/10 - 13/14	All Colleges Average 09/10 - 13/14
Female	85%	85%	84%	86%	86%	1%	85%	85%
Male	84%	84%	84%	85%	86%	2%	84%	85%
Unreported	100%	50%	86%	79%	100%	0%	83%	86%
Average	84%	85%	84%	86%	86%	2%	85%	85%

Source: SDCCD Information System

Note. Unreported cells may have fewer than 25 students in a given year.

Mesa College Fact Book 2014

Retention Rates by Ethnicity: The ethnic groups with the highest retention rates, on average, were Asian/Pacific Islander students (87%), Filipino students (86%), and White students (86%). The average retention rates of African American students (81%), American Indian students (83%), Latino students (84%), and students categorized as "Other" ethnicities (84%) were lower than the average retention rates of the general student populations at Mesa College and all colleges in the District (85% each). All ethnic groups showed an increase in retention rates between 2009/10 and 2013/14.

Figure 3.7. Mesa College Retention Rates by Ethnicity

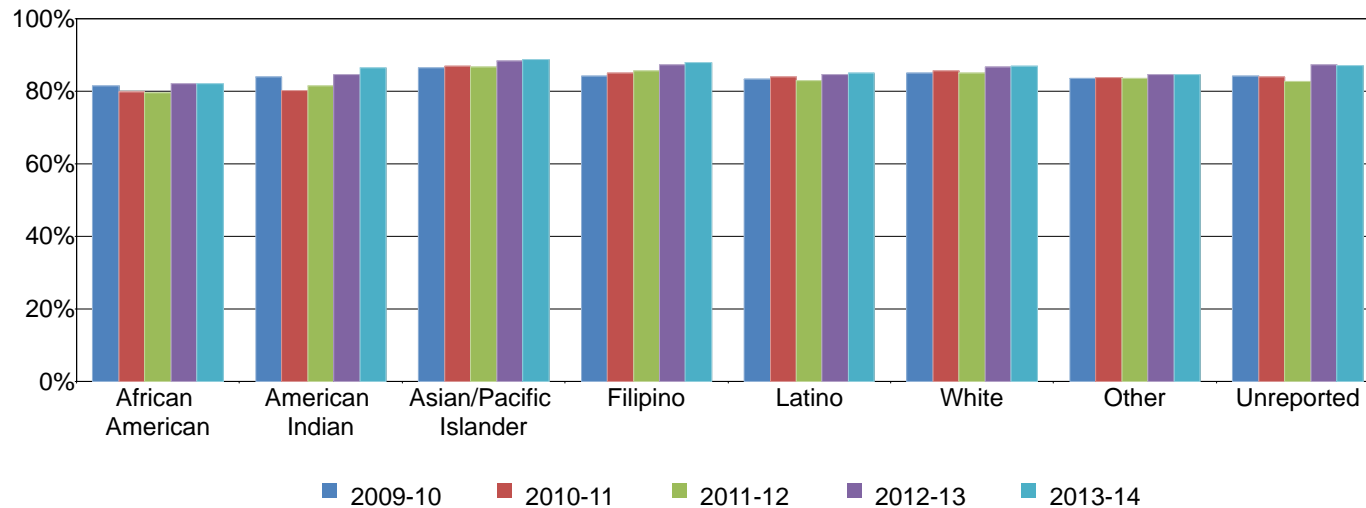


Table 3.7. Mesa College Retention Rates by Ethnicity

	2009-10	2010-11	2011-12	2012-13	2013-14	% Difference 09/10 - 13/14	College Average 09/10 - 13/14	All Colleges Average 09/10 - 13/14
African American	81%	80%	80%	82%	82%	1%	81%	81%
American Indian	84%	80%	82%	84%	86%	2%	83%	84%
Asian/Pacific Islander	86%	87%	87%	88%	89%	3%	87%	88%
Filipino	84%	85%	85%	87%	88%	4%	86%	87%
Latino	83%	84%	83%	85%	85%	2%	84%	84%
White	85%	86%	85%	87%	87%	2%	86%	87%
Other	83%	84%	83%	85%	85%	2%	84%	84%
Unreported	84%	84%	83%	87%	87%	3%	85%	85%
Average	84%	85%	84%	86%	86%	2%	85%	85%

Source: SDCCD Information System

Mesa College Fact Book 2014

Retention Rates by Age: Between 2009/10 and 2013/14, students under age 18 had the highest retention rates, on average (96%). With the exception of students under age 18, the average retention rates of all other age groups were comparable to or lower than the average retention rate of the general student populations at both Mesa College and all colleges in the District (85% each).

Figure 3.8. Mesa College Retention Rates by Age

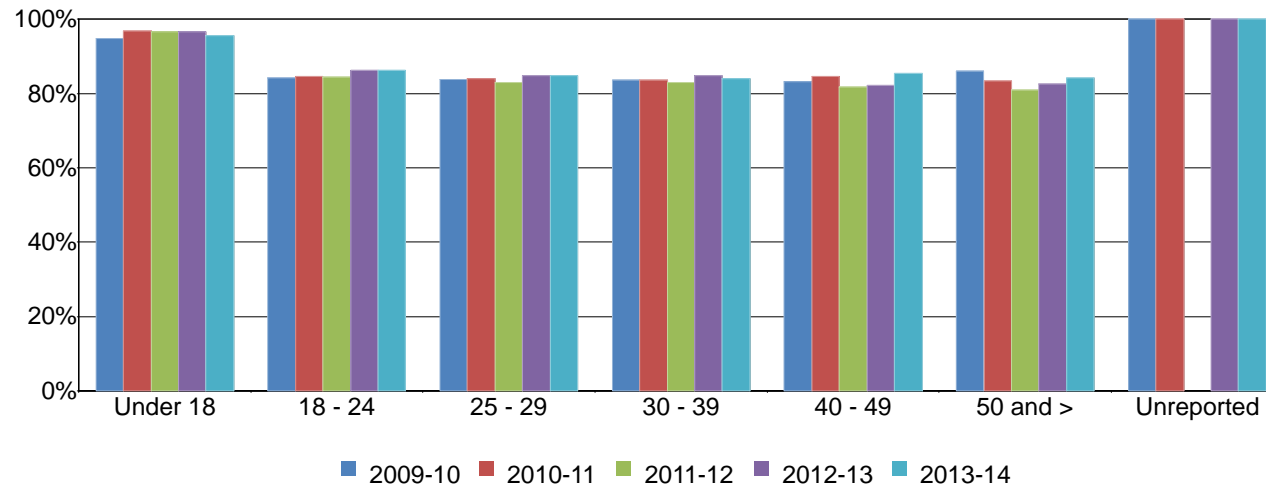


Table 3.8. Mesa College Retention Rates by Age

	2009-10	2010-11	2011-12	2012-13	2013-14	% Difference 09/10 - 13/14	College Average 09/10 - 13/14	All Colleges Average 09/10 - 13/14
Under 18	95%	97%	97%	97%	96%	1%	96%	96%
18 - 24	84%	85%	84%	86%	86%	2%	85%	85%
25 - 29	84%	84%	83%	85%	85%	1%	84%	85%
30 - 39	84%	84%	83%	85%	84%	0%	84%	85%
40 - 49	83%	85%	82%	82%	86%	3%	83%	85%
50 and >	86%	83%	81%	83%	84%	-2%	83%	85%
Unreported	100%	100%	---	100%	100%	0%	---	100%
Average	84%	85%	84%	86%	86%	2%	85%	85%

Source: SDCCD Information System

Note. Unreported cells may have fewer than 25 students in a given year.

Mesa College Fact Book 2014

Overall Annual GPA: The annual GPAs for Mesa College students remained relatively consistent, with a five-year average of 2.65. Mesa's collegewide average annual GPA was equal to the annual average GPA of all colleges in the District (2.65). The Mesa College annual GPAs were comparable in each year to the annual GPAs of all colleges in the District between 2009/10 and 2013/14.

Figure 3.9. Mesa College Overall Annual GPA

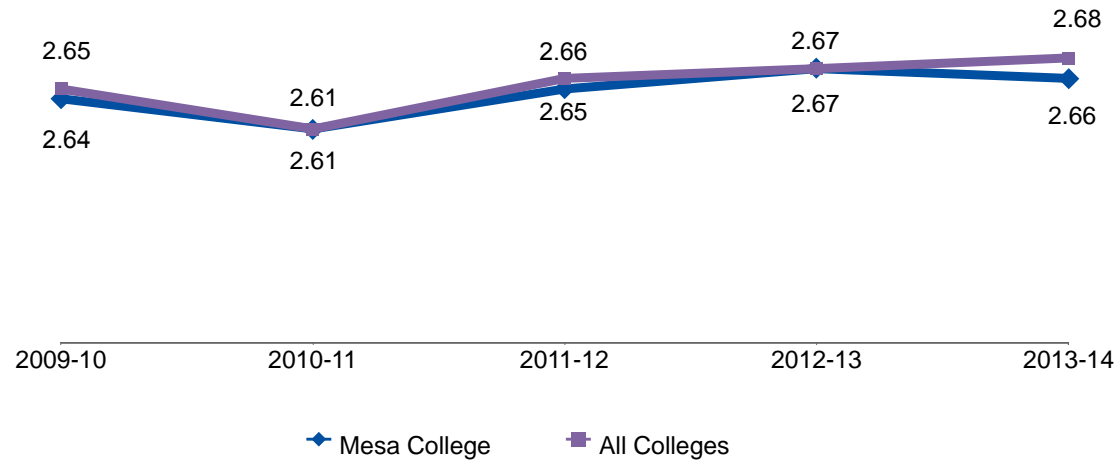


Table 3.9. Mesa College Overall Annual GPA

	2009-10	2010-11	2011-12	2012-13	2013-14	College Average 09/10 - 13/14	All Colleges Average 09/10 - 13/14
Average	2.64	2.61	2.65	2.67	2.66	2.65	2.65

Source: SDCCD Information System

Mesa College Fact Book 2014

Annual GPA by Gender: Between 2009/10 and 2013/14, female students, on average, had higher GPAs compared to their male student counterpart (2.73 & 2.55, respectively). The average annual GPA of female students at Mesa was slightly higher than the average annual GPA of the female students at all colleges in the District (2.70). However, the opposite trend was true for the male students at Mesa when compared to the male student population for all colleges in the District (2.55 & 2.61, respectively). The average annual GPA of female students at Mesa was higher than the average annual GPAs of the student populations at both Mesa and all colleges in the District (2.65 each). However, the opposite trend was true for the male students at Mesa College when compared to the same averages.

Figure 3.10. Mesa College Annual GPA by Gender

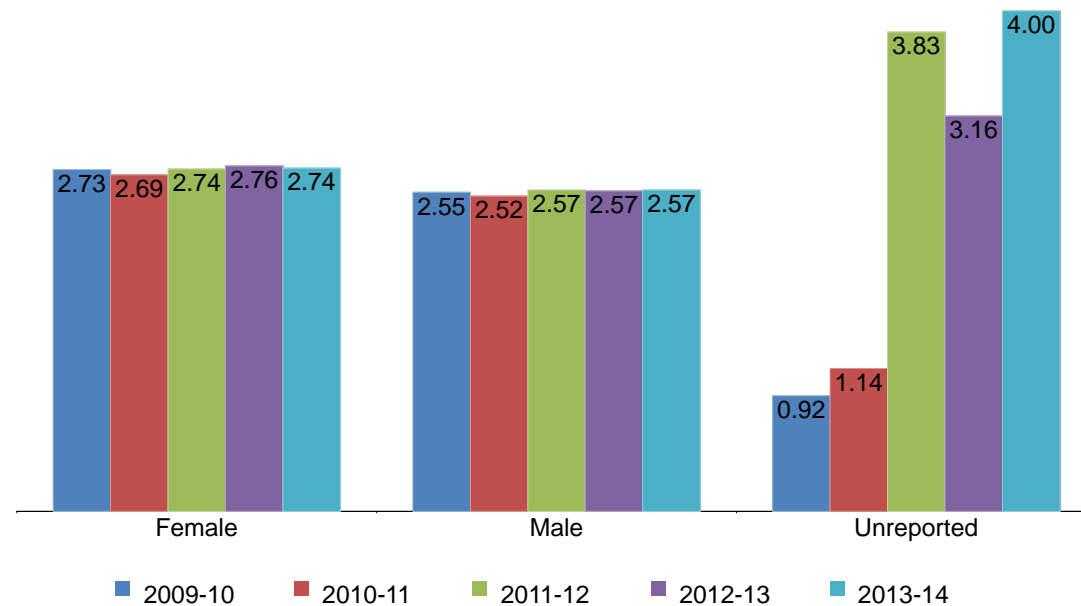


Table 3.10. Mesa College Annual GPA by Gender

	2009-10	2010-11	2011-12	2012-13	2013-14	College Average 09/10 - 13/14	All Colleges Average 09/10 - 13/14
Female	2.73	2.69	2.74	2.76	2.74	2.73	2.70
Male	2.55	2.52	2.57	2.57	2.57	2.55	2.61
Unreported	0.92	1.14	3.83	3.16	4.00	2.78	2.91
Average	2.64	2.61	2.65	2.67	2.66	2.65	2.65

Source: SDCCD Information System

Note. Unreported cells may have fewer than 25 students in a given year.

Mesa College Fact Book 2014

Annual GPA by Ethnicity: Between 2009/10 and 2013/14, Asian/Pacific Islander students and White students had the highest GPAs, on average (2.88 & 2.83, respectively). The average annual GPAs of all other ethnic groups were lower than the average annual GPAs of the general student populations of Mesa College and all colleges in the District (2.65 each).

Figure 3.11. Mesa College Annual GPA by Ethnicity

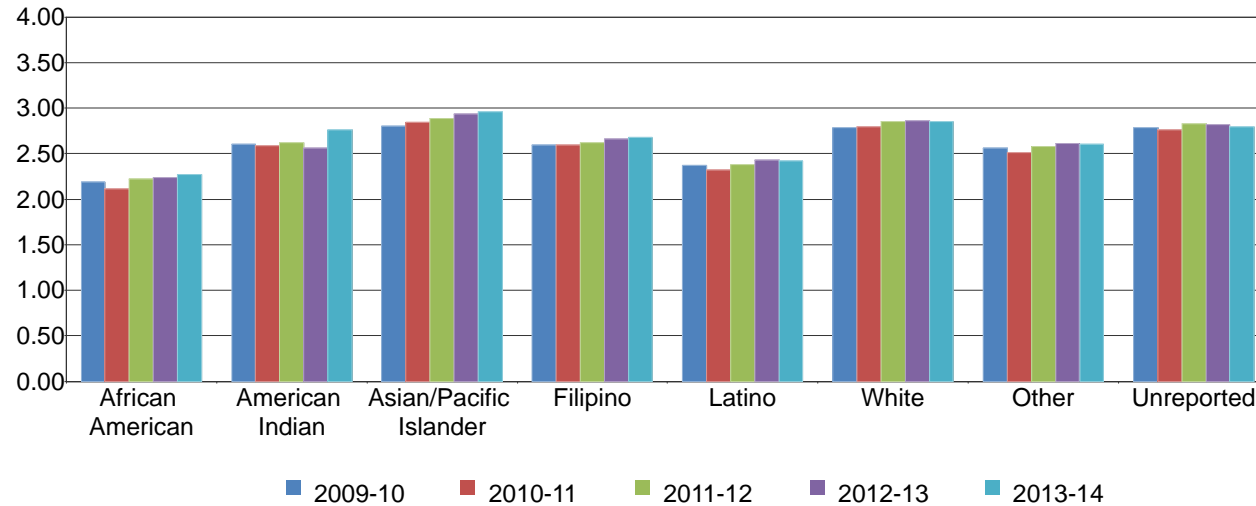


Table 3.11. Mesa College Annual GPA by Ethnicity

	2009-10	2010-11	2011-12	2012-13	2013-14	College Average 09/10 - 13/14	All Colleges Average 09/10 - 13/14
African American	2.19	2.12	2.22	2.24	2.27	2.20	2.25
American Indian	2.60	2.59	2.62	2.56	2.76	2.62	2.68
Asian/Pacific Islander	2.80	2.84	2.89	2.93	2.96	2.88	2.88
Filipino	2.60	2.59	2.62	2.66	2.68	2.63	2.65
Latino	2.37	2.32	2.38	2.43	2.42	2.39	2.41
White	2.79	2.79	2.85	2.86	2.85	2.83	2.89
Other	2.56	2.51	2.58	2.61	2.61	2.58	2.60
Unreported	2.78	2.76	2.83	2.82	2.79	2.79	2.82
Average	2.64	2.61	2.65	2.67	2.66	2.65	2.65

Source: SDCCD Information System

Mesa College Fact Book 2014

Annual GPA by Age: With the exception of students under age 18, a general trend between 2009/10 and 2013/14 showed as age increased, so did the average GPAs. The average annual GPA of students between ages 18 and 24 (2.50) was lower than the general student populations of both Mesa College and all colleges in the District (2.65 each).

Figure 3.12. Mesa College Annual GPA by Age

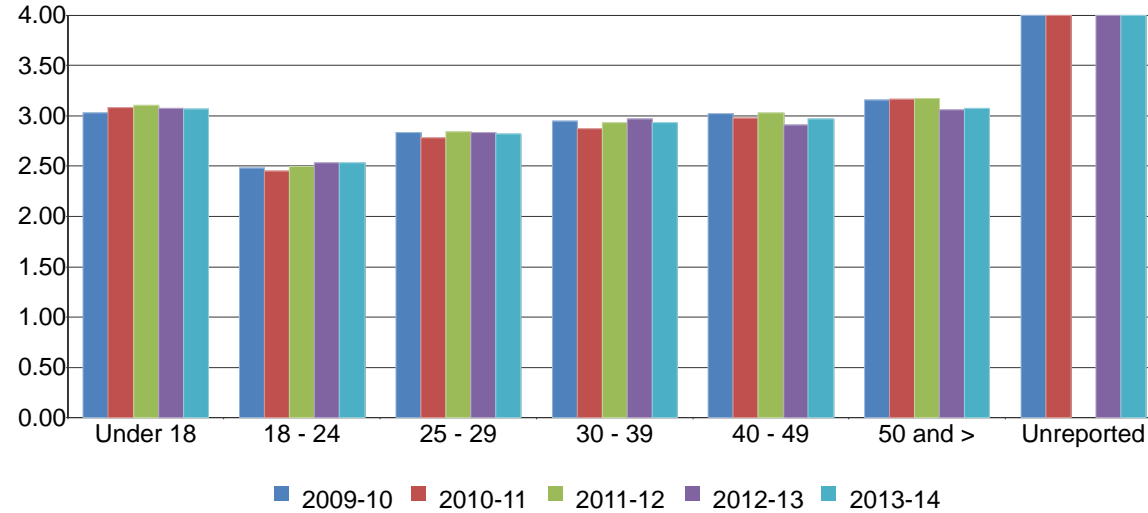


Table 3.12. Mesa College Annual GPA by Age

	2009-10	2010-11	2011-12	2012-13	2013-14	College Average 09/10 - 13/14	All Colleges Average 09/10 - 13/14
Under 18	3.03	3.08	3.11	3.07	3.06	3.07	3.05
18 - 24	2.48	2.45	2.50	2.53	2.53	2.50	2.48
25 - 29	2.84	2.78	2.84	2.83	2.82	2.82	2.83
30 - 39	2.95	2.87	2.93	2.97	2.93	2.93	2.93
40 - 49	3.02	2.98	3.03	2.91	2.97	2.98	2.98
50 and >	3.16	3.16	3.17	3.06	3.07	3.12	3.04
Unreported	4.00	4.00	---	4.00	4.00	---	4.00
Average	2.64	2.61	2.65	2.67	2.66	2.65	2.65

Source: SDCCD Information System

Note. Unreported cells may have fewer than 25 students in a given year.

Mesa College Fact Book 2014

Annual Awards Conferred: On average, 75% of the total awards conferred at Mesa College were associate degrees. Associate degrees also showed the greatest increase over the five-year period (15%), from 874 in 2009/10 to 1,003 in 2013/14. In contrast, certificates requiring 60 or more units decreased 100%, from nine in 2009/10 to zero in 2013/14. On average, associate degrees comprised a greater percentage of awards conferred at Mesa College (75%) than within all colleges in the District (65%).

Figure 3.13. Mesa College Overall Annual Awards Conferred

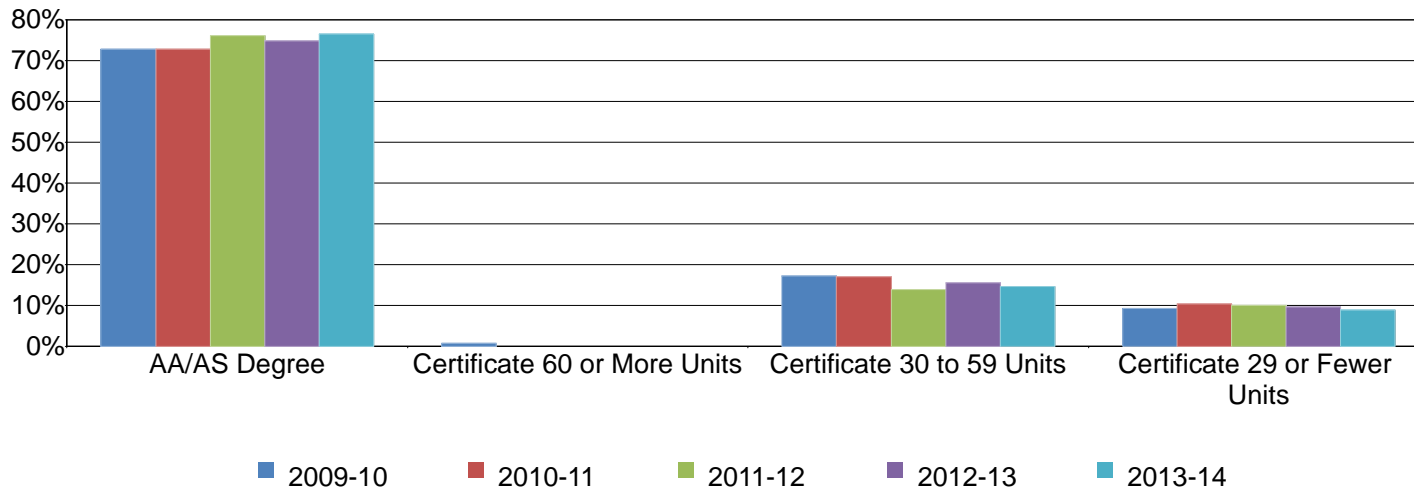


Table 3.13. Mesa College Overall Annual Awards Conferred

	2009-10		2010-11		2011-12		2012-13		2013-14		% Change 09/10-13/14	College Average 09/10-13/14	All Colleges Average 09/10-13/14
AA/AS Degree	874	73%	907	73%	1,073	76%	992	75%	1,003	77%	15%	75%	65%
Certificate 60 or More Units	9	1%	0	0%	0	0%	0	0%	0	0%	-100%	0%	0%
Certificate 30 to 59 Units	206	17%	211	17%	196	14%	206	16%	192	15%	-7%	16%	18%
Certificate 29 or Fewer Units	112	9%	128	10%	141	10%	127	10%	116	9%	4%	10%	16%
Total	1,201	100%	1,246	100%	1,410	100%	1,325	100%	1,311	100%	9%	100%	100%

Source: SDCCD Information System

Mesa College Fact Book 2014

Annual Awards Conferred by Gender: On average, female students received a greater number of associate degrees at Mesa College than their male counterpart (56% & 44%, respectively). Between 2009/10 and 2013/14, the number of associate degrees awarded increased 23% for male students and 9% for female students. Female students also received a greater number of all certificate types. However, the number of certificates requiring 30 to 59 units increased for male students (13%) and decreased for female students (17%). From 2009/10 to 2013/14, male students consistently earned a lower percentage of certificates at Mesa College compared to the male student population within all colleges in the District. Female students exhibited the opposite pattern.

Figure 3.14.1. Mesa College Annual AA/AS Degrees by Gender

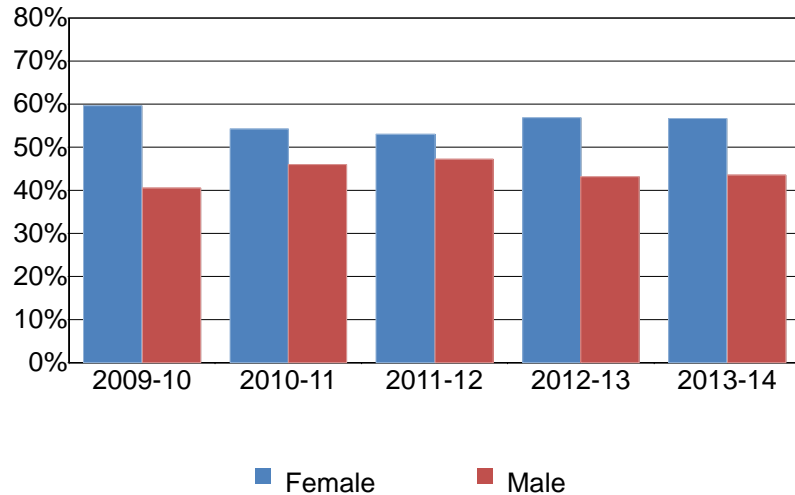


Figure 3.14.2. Mesa College Annual Certificates 60 or More Units by Gender

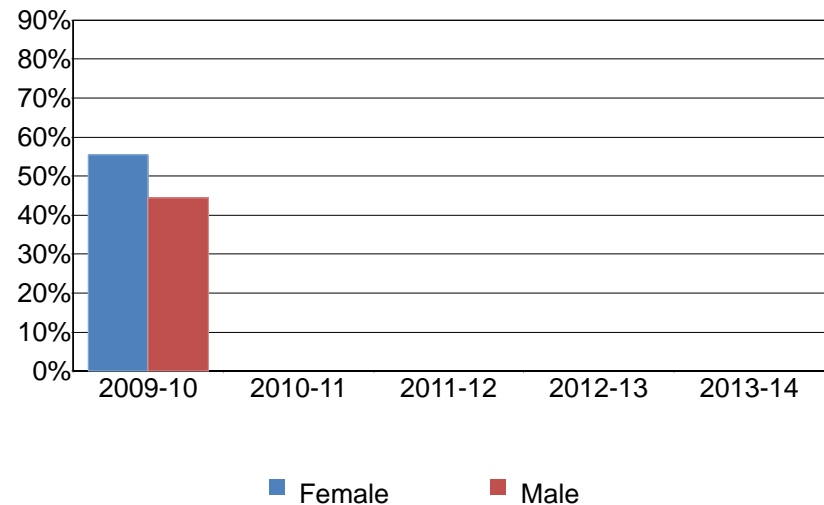


Figure 3.14.3. Mesa College Annual Certificates 30 to 59 Units by Gender

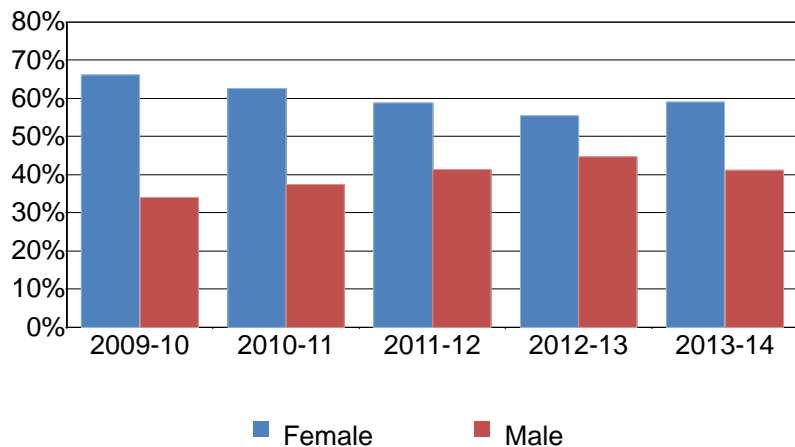
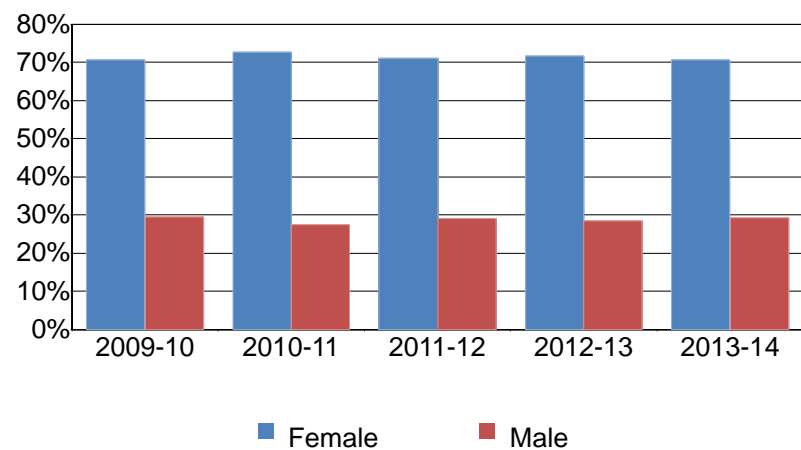


Figure 3.14.4. Mesa College Annual Certificates 29 or Fewer Units by Gender



Mesa College Fact Book 2014

Table 3.14. Mesa College Annual Awards Conferred by Gender

		2009-10		2010-11		2011-12		2012-13		2013-14		% Change 09/10-13/14	College Average 09/10-13/14	All Colleges Average 09/10-13/14
AA/AS Degree	Female	520	59%	491	54%	568	53%	564	57%	568	57%	9%	56%	55%
	Male	354	41%	416	46%	505	47%	428	43%	435	43%	23%	44%	45%
	Total	874	100%	907	100%	1,073	100%	992	100%	1,003	100%	15%	100%	100%
Certificate 60 or More Units	Female	5	56%	0	0%	0	0%	0	0%	0	0%	-100%	56%	16%
	Male	4	44%	0	0%	0	0%	0	0%	0	0%	-100%	44%	84%
	Total	9	100%	0	0%	0	0%	0	0%	0	0%	-100%	100%	100%
Certificate 30 to 59 Units	Female	136	66%	132	63%	115	59%	114	55%	113	59%	-17%	60%	48%
	Male	70	34%	79	37%	81	41%	92	45%	79	41%	13%	40%	52%
	Total	206	100%	211	100%	196	100%	206	100%	192	100%	-7%	100%	100%
Certificate 29 or Fewer Units	Female	79	71%	93	73%	100	71%	91	72%	82	71%	4%	71%	45%
	Male	33	29%	35	27%	41	29%	36	28%	34	29%	3%	29%	55%
	Total	112	100%	128	100%	141	100%	127	100%	116	100%	4%	100%	100%
Grand Total		1,201	100%	1,246	100%	1,410	100%	1,325	100%	1,311	100%	9%	100%	100%

Source: SDCCD Information System

Mesa College Fact Book 2014

Annual Awards Conferred by Ethnicity: Between 2009/10 and 2013/14, White students received the greatest number of awards conferred, followed by Latino students, and Asian/Pacific Islander students. It should be noted that these three ethnic groups (White, Latino, & Asian/Pacific Islander students) constitute the greatest proportions of the student population at Mesa College. The number of associate degrees conferred at Mesa College increased for Latino students (83%), Asian/Pacific Islander students (10%), White students (5%), and students categorized as "Other" ethnicities (67%) between 2009/10 and 2013/14. Latino students and African American students at Mesa College were underrepresented across most award categories when compared to the same ethnic groups within all colleges in the District, while White and Asian/Pacific Islander students were overrepresented when compared to the same ethnic groups within all colleges in the District.

Figure 3.15.1. Mesa College Annual AA/AS Degrees by Ethnicity

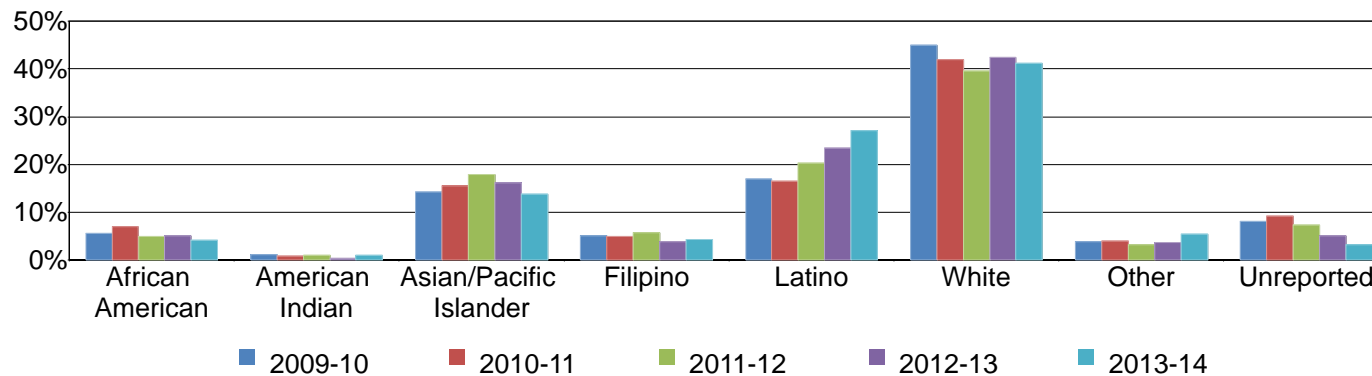
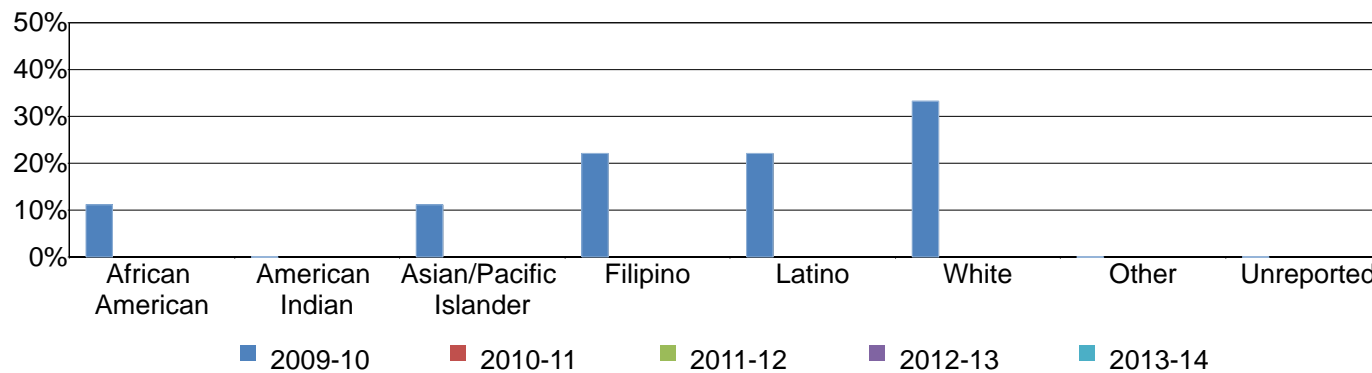


Figure 3.15.2. Mesa College Annual Certificates 60 or More Units by Ethnicity



Mesa College Fact Book 2014

Figure 3.15.3. Mesa College Annual Certificates 30 to 59 Units by Ethnicity

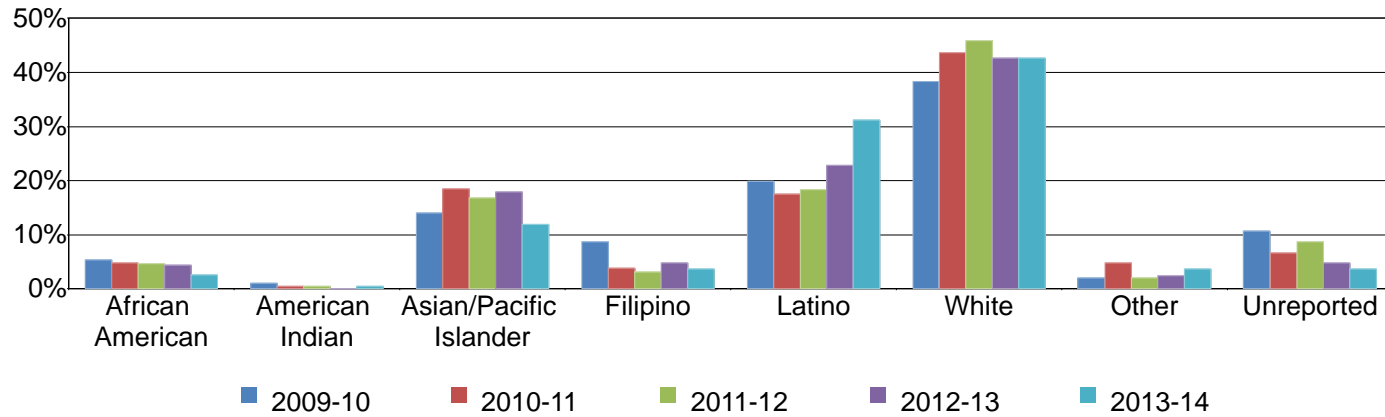
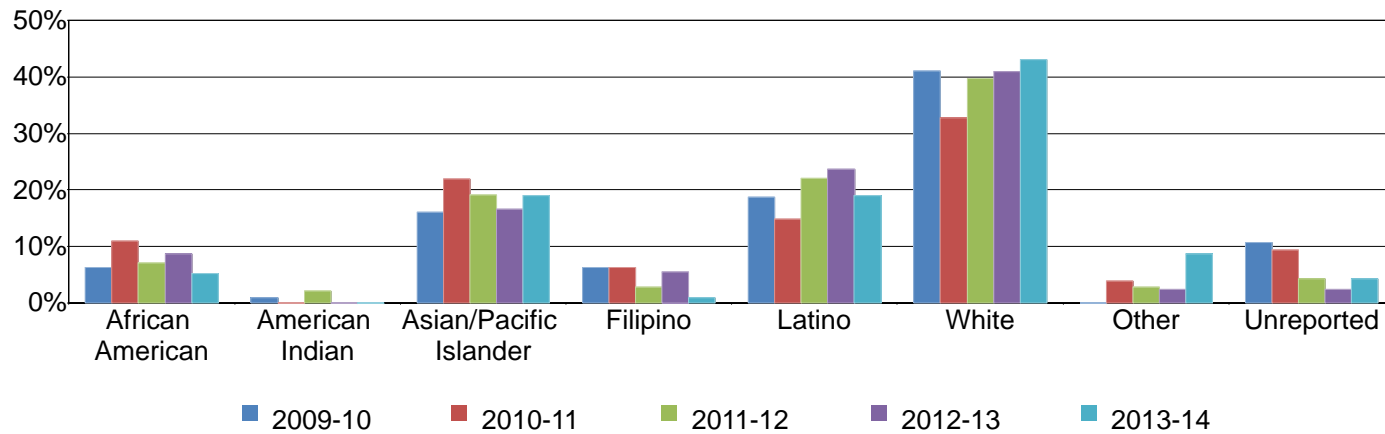


Figure 3.15.4. Mesa College Annual Certificates 29 or Fewer Units by Ethnicity



Mesa College Fact Book 2014

Table 3.15. Mesa College Annual Awards Conferred by Ethnicity

		2009-10		2010-11		2011-12		2012-13		2013-14		% Change 09/10-13/14	College Average 09/10-13/14	All Colleges Average 09/10-13/14
AA/AS Degree	African American	49	6%	63	7%	54	5%	50	5%	41	4%	-16%	5%	7%
	American Indian	10	1%	7	1%	10	1%	4	0%	10	1%	0%	1%	1%
	Asian/Pacific Islander	125	14%	141	16%	192	18%	161	16%	138	14%	10%	16%	13%
	Filipino	45	5%	45	5%	62	6%	38	4%	43	4%	-4%	5%	6%
	Latino	148	17%	150	17%	217	20%	232	23%	271	27%	83%	21%	24%
	White	393	45%	381	42%	425	40%	421	42%	412	41%	5%	42%	37%
	Other	33	4%	37	4%	35	3%	36	4%	55	5%	67%	4%	4%
	Unreported	71	8%	83	9%	78	7%	50	5%	33	3%	-54%	6%	6%
	Total	874	100%	907	100%	1,073	100%	992	100%	1,003	100%	15%	100%	100%
Certificate 60 or More Units	African American	1	11%	0	0%	0	0%	0	0%	0	0%	-100%	11%	8%
	Asian/Pacific Islander	1	11%	0	0%	0	0%	0	0%	0	0%	-100%	11%	10%
	Filipino	2	22%	0	0%	0	0%	0	0%	0	0%	-100%	22%	13%
	Latino	2	22%	0	0%	0	0%	0	0%	0	0%	-100%	22%	18%
	White	3	33%	0	0%	0	0%	0	0%	0	0%	-100%	33%	51%
	Total	9	100%	0	0%	0	0%	0	0%	0	0%	-100%	100%	100%

Source: SDCCD Information System

Mesa College Fact Book 2014

Table 3.15. Mesa College Annual Awards Conferred by Ethnicity (continued)

		2009-10		2010-11		2011-12		2012-13		2013-14		% Change 09/10-13/14	College Average 09/10-13/14	All Colleges Average 09/10-13/14
Certificate 30 to 59 Units	African American	11	5%	10	5%	9	5%	9	4%	5	3%	-55%	4%	7%
	American Indian	2	1%	1	0%	1	1%	0	0%	1	1%	-50%	0%	1%
	Asian/Pacific Islander	29	14%	39	18%	33	17%	37	18%	23	12%	-21%	16%	11%
	Filipino	18	9%	8	4%	6	3%	10	5%	7	4%	-61%	5%	5%
	Latino	41	20%	37	18%	36	18%	47	23%	60	31%	46%	22%	23%
	White	79	38%	92	44%	90	46%	88	43%	82	43%	4%	43%	42%
	Other	4	2%	10	5%	4	2%	5	2%	7	4%	75%	3%	4%
	Unreported	22	11%	14	7%	17	9%	10	5%	7	4%	-68%	7%	7%
	Total	206	100%	211	100%	196	100%	206	100%	192	100%	-7%	100%	100%
Certificate 29 or Fewer Units	African American	7	6%	14	11%	10	7%	11	9%	6	5%	-14%	8%	9%
	American Indian	1	1%	0	0%	3	2%	0	0%	0	0%	-100%	1%	1%
	Asian/Pacific Islander	18	16%	28	22%	27	19%	21	17%	22	19%	22%	19%	13%
	Filipino	7	6%	8	6%	4	3%	7	6%	1	1%	-86%	4%	5%
	Latino	21	19%	19	15%	31	22%	30	24%	22	19%	5%	20%	26%
	White	46	41%	42	33%	56	40%	52	41%	50	43%	9%	39%	38%
	Other	0	0%	5	4%	4	3%	3	2%	10	9%	---	4%	4%
	Unreported	12	11%	12	9%	6	4%	3	2%	5	4%	-58%	6%	5%
	Total	112	100%	128	100%	141	100%	127	100%	116	100%	4%	100%	100%
Grand Total	1,201	100%	1,246	100%	1,410	100%	1,325	100%	1,311	100%	9%	100%	100%	

Source: SDCCD Information System

Mesa College Fact Book 2014

Annual Awards Conferred by Age: On average, 48% of all associate degrees awarded were to students between ages 25 and 39, and 42% were awarded to students between ages 18 and 24. Approximately half of all certificates awarded between 2009/10 and 2013/14 were to students between ages 18 and 29. Students between ages 18 and 24 were overrepresented in the number of associate degrees received at Mesa College (42%) when compared to the same age group within all colleges in the District (39%).

Figure 3.16.1. Mesa College Annual AA/AS Degrees by Age

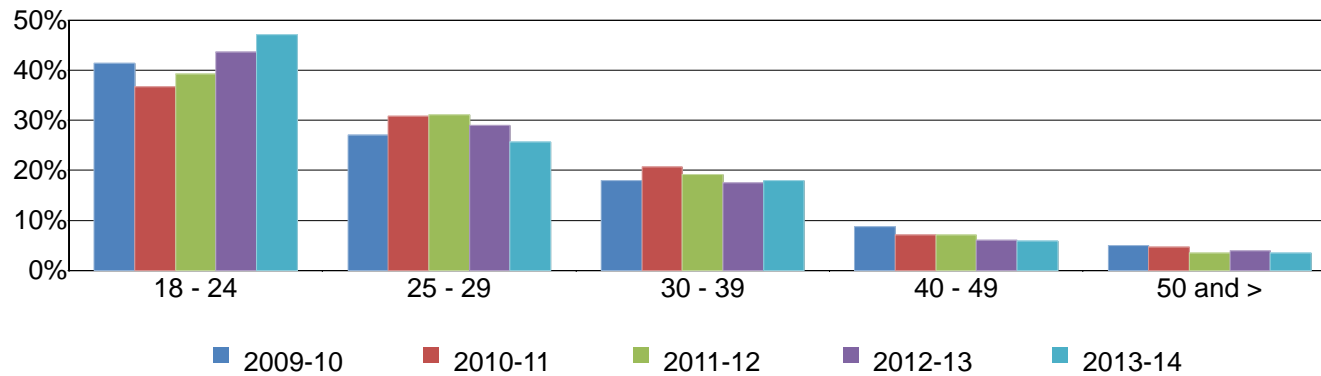
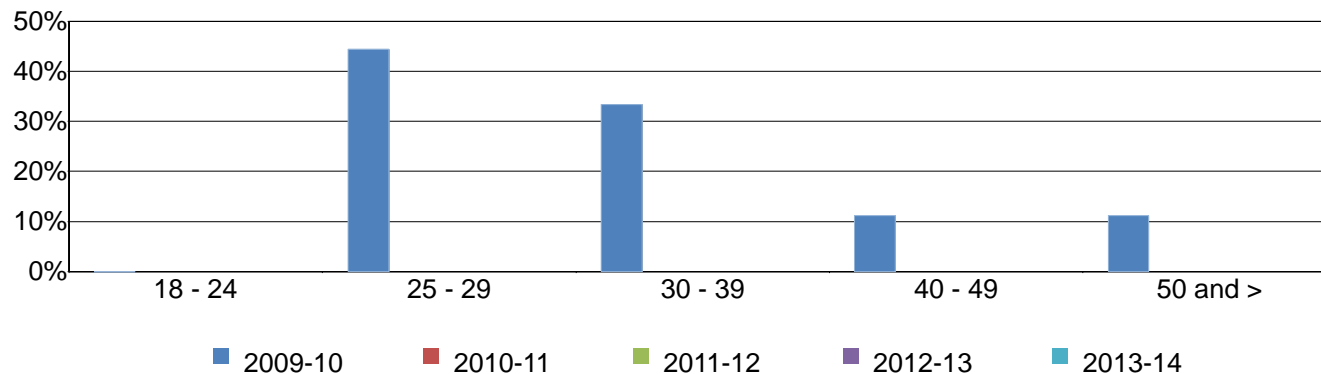


Figure 3.16.2. Mesa College Annual Certificates 60 or More Units by Age



Mesa College Fact Book 2014

Figure 3.16.3. Mesa College Annual Certificates 30 to 59 Units by Age

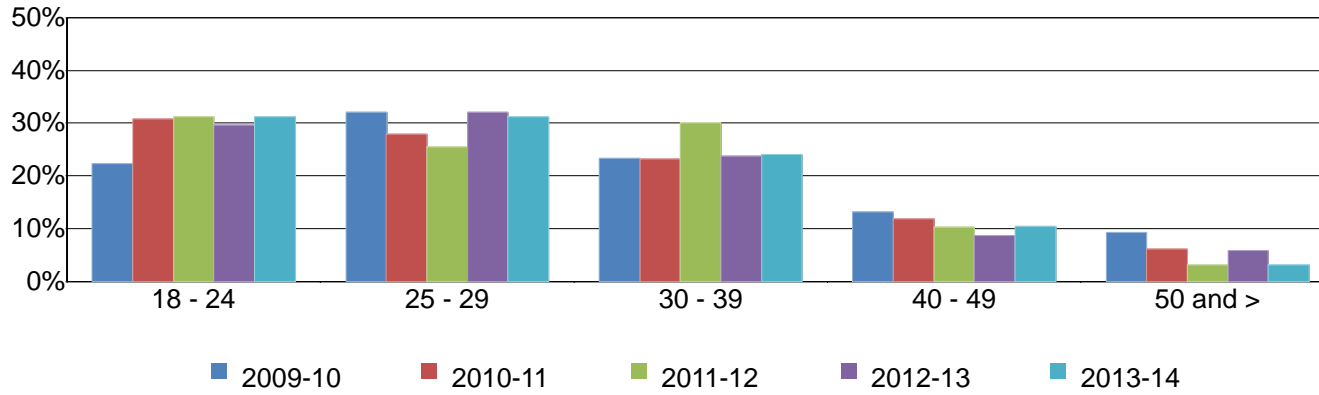
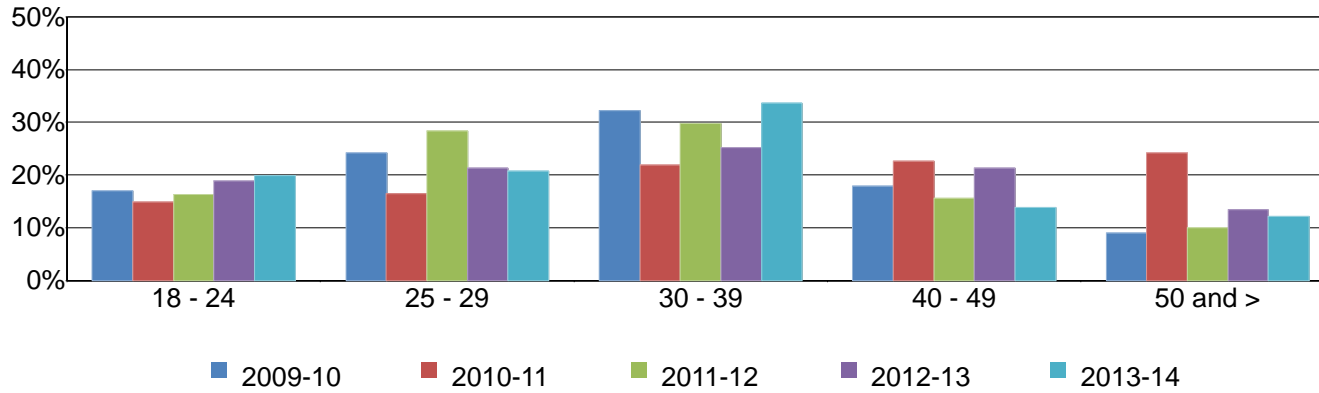


Figure 3.16.4. Mesa College Annual Certificates 29 or Fewer Units by Age



Mesa College Fact Book 2014

Table 3.16. Mesa College Annual Awards Conferred by Age

		2009-10		2010-11		2011-12		2012-13		2013-14		% Change 09/10-13/14	College Average 09/10-13/14	All Colleges Average 09/10-13/14
AA/AS Degree	18 - 24	362	41%	333	37%	421	39%	433	44%	473	47%	31%	42%	39%
	25 - 29	236	27%	280	31%	333	31%	288	29%	257	26%	9%	29%	27%
	30 - 39	157	18%	188	21%	206	19%	173	17%	180	18%	15%	19%	21%
	40 - 49	76	9%	64	7%	76	7%	59	6%	58	6%	-24%	7%	8%
	50 and >	43	5%	42	5%	37	3%	39	4%	35	3%	-19%	4%	5%
	Total	874	100%	907	100%	1,073	100%	992	100%	1,003	100%	15%	100%	100%
Certificate 60 or More Units	25 - 29	4	44%	0	0%	0	0%	0	0%	0	0%	-100%	44%	38%
	30 - 39	3	33%	0	0%	0	0%	0	0%	0	0%	-100%	33%	33%
	40 - 49	1	11%	0	0%	0	0%	0	0%	0	0%	-100%	11%	10%
	50 and >	1	11%	0	0%	0	0%	0	0%	0	0%	-100%	11%	20%
	Total	9	100%	0	0%	0	0%	0	0%	0	0%	-100%	100%	100%
Certificate 30 to 59 Units	18 - 24	46	22%	65	31%	61	31%	61	30%	60	31%	30%	29%	27%
	25 - 29	66	32%	59	28%	50	26%	66	32%	60	31%	-9%	30%	25%
	30 - 39	48	23%	49	23%	59	30%	49	24%	46	24%	-4%	25%	24%
	40 - 49	27	13%	25	12%	20	10%	18	9%	20	10%	-26%	11%	14%
	50 and >	19	9%	13	6%	6	3%	12	6%	6	3%	-68%	6%	10%
	Total	206	100%	211	100%	196	100%	206	100%	192	100%	-7%	100%	100%
Certificate 29 or Fewer Units	18 - 24	19	17%	19	15%	23	16%	24	19%	23	20%	21%	17%	22%
	25 - 29	27	24%	21	16%	40	28%	27	21%	24	21%	-11%	22%	23%
	30 - 39	36	32%	28	22%	42	30%	32	25%	39	34%	8%	28%	27%
	40 - 49	20	18%	29	23%	22	16%	27	21%	16	14%	-20%	18%	16%
	50 and >	10	9%	31	24%	14	10%	17	13%	14	12%	40%	14%	11%
	Total	112	100%	128	100%	141	100%	127	100%	116	100%	4%	100%	100%
Grand Total	1,201	100%	1,246	100%	1,410	100%	1,325	100%	1,311	100%	9%	100%	100%	

Source: SDCCD Information System

Mesa College Fact Book 2014

Annual Transfer Volume: The annual transfer volume for Mesa College increased 2%, from 1,794 in 2008/09 to 1,823 in 2012/13.

Figure 3.17. Mesa College Overall Annual Transfers

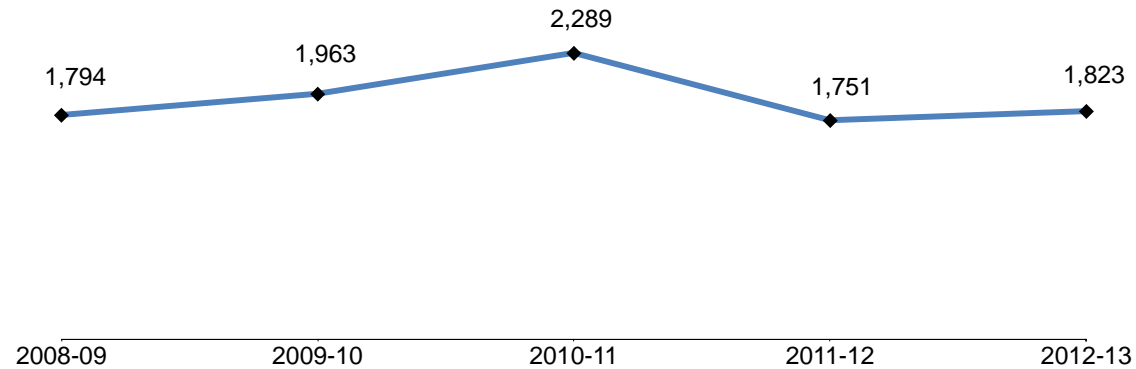


Table 3.17. Mesa College Overall Annual Transfers

	2008-09	2009-10	2010-11	2011-12	2012-13	% Change 08/09-12/13
Total	1,794	1,963	2,289	1,751	1,823	2%

Source: National Student Clearinghouse

Mesa College Fact Book 2014

Annual Transfer Volume by Gender: Between 2008/09 and 2012/13, female students (51%) had a higher transfer volume, on average, compared to their male student (49%) counterpart. The transfer volume for female students decreased 5%, while the transfer volume for male students increased 9% between 2008/09 and 2012/13.

Figure 3.18. Mesa College Annual Transfers by Gender

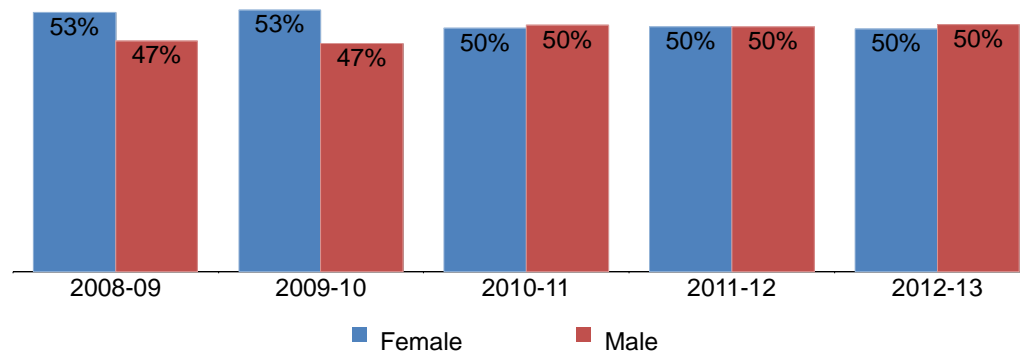


Table 3.18. Mesa College Annual Transfers by Gender

	2008-09		2009-10		2010-11		2011-12		2012-13		% Change 08/09-12/13	College Average 08/09-12/13	All Colleges Average 08/09-12/13
Female	950	53%	1,047	53%	1,137	50%	875	50%	903	50%	-5%	51%	52%
Male	844	47%	916	47%	1,152	50%	876	50%	920	50%	9%	49%	48%
Total	1,794	100%	1,963	100%	2,289	100%	1,751	100%	1,823	100%	2%	100%	100%

Source: National Student Clearinghouse

Mesa College Fact Book 2014

Annual Transfer Volume by Ethnicity: Among those students who transferred from Mesa College, almost half were White students (49%), on average. Together, Latino students and Asian/Pacific Islander students accounted for more than one quarter of the transfer volume (17% & 13%, respectively) between 2008/09 and 2012/13. Transfer volume increased for Latino students (45%), African American students (10%), Asian/Pacific Islander students (3%), and students categorized as "Other" ethnicities (52%) between 2008/09 and 2012/13.

Figure 3.19. Mesa College Annual Transfers by Ethnicity

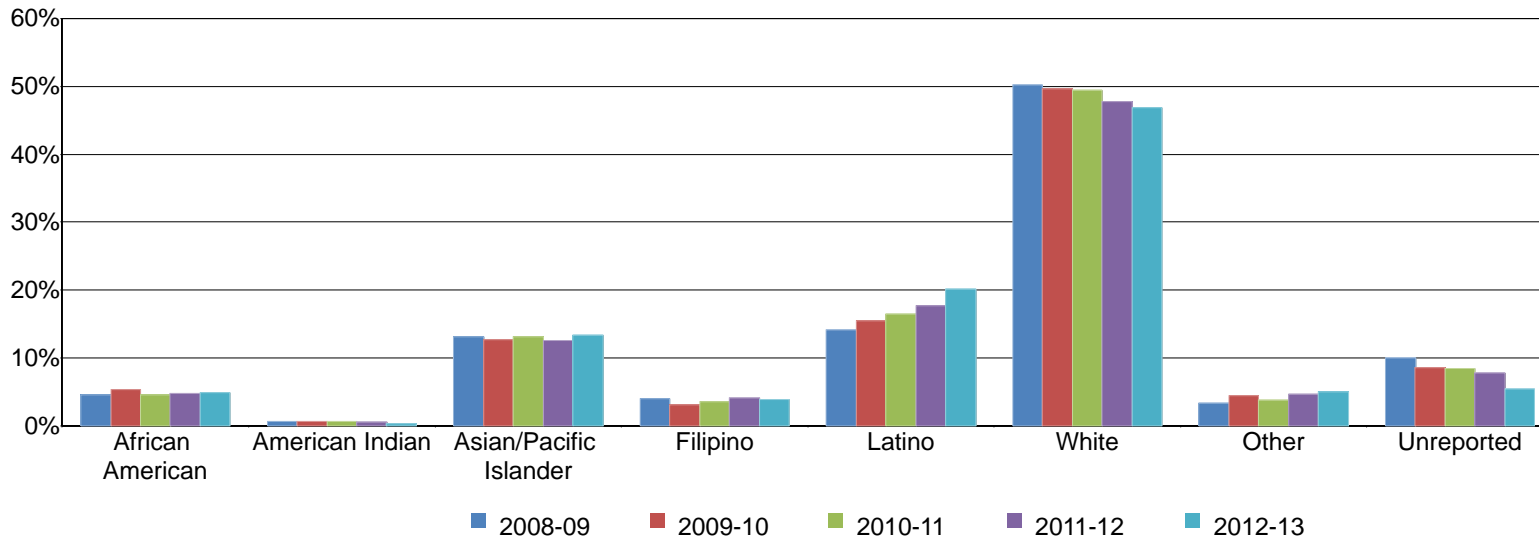


Table 3.19. Mesa College Annual Transfers by Ethnicity

	2008-09		2009-10		2010-11		2011-12		2012-13		% Change 08/09-12/13	College Average 08/09-12/13	All Colleges Average 08/09-12/13
African American	82	5%	105	5%	104	5%	83	5%	90	5%	10%	5%	7%
American Indian	12	1%	13	1%	14	1%	10	1%	5	0%	-58%	1%	1%
Asian/Pacific Islander	236	13%	249	13%	301	13%	221	13%	244	13%	3%	13%	12%
Filipino	71	4%	62	3%	81	4%	73	4%	71	4%	0%	4%	5%
Latino	253	14%	304	15%	376	16%	309	18%	368	20%	45%	17%	19%
White	900	50%	974	50%	1,132	49%	837	48%	855	47%	-5%	49%	44%
Other	60	3%	88	4%	87	4%	82	5%	91	5%	52%	4%	5%
Unreported	180	10%	168	9%	194	8%	136	8%	99	5%	-45%	8%	8%
Total	1,794	100%	1,963	100%	2,289	100%	1,751	100%	1,823	100%	2%	100%	100%

Source: National Student Clearinghouse

Mesa College Fact Book 2014

Annual Transfer Volume by Age: The age groups with the highest transfer volume, on average, were students between ages 18 and 24 (61%), students between ages 25 and 29 (24%), and students between ages 30 and 39 (11%). Transfer volume decreased 10% for students between ages 18 and 24, and 13% for students between ages 40 and 49 years old. However, transfer volume increased for all other age groups during the same time period.

Figure 3.20. Mesa College Annual Transfers by Age

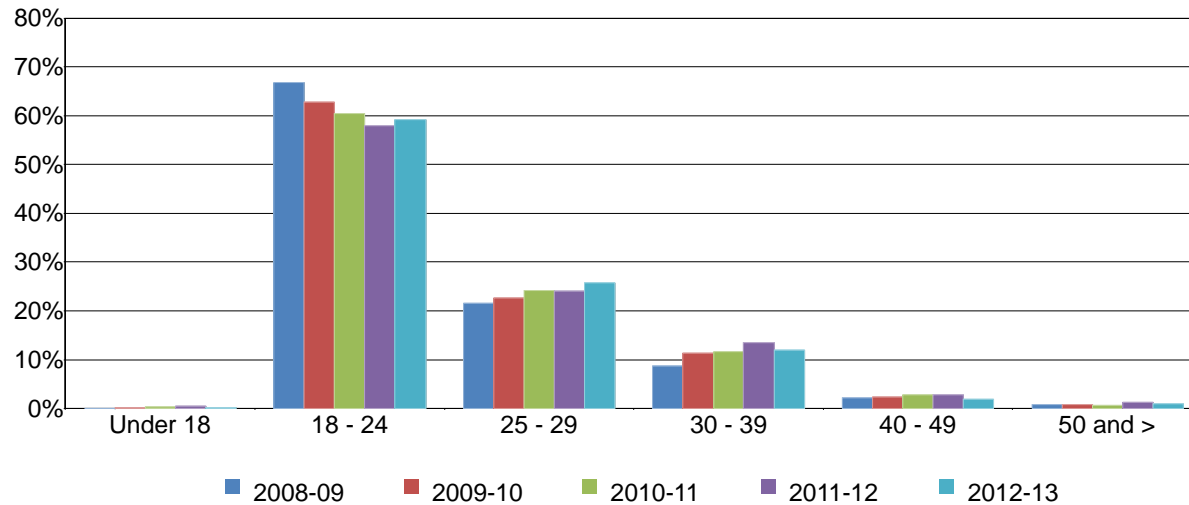


Table 3.20. Mesa College Annual Transfers by Age

	2008-09		2009-10		2010-11		2011-12		2012-13		% Change 08/09-12/13	College Average 08/09-12/13	All Colleges Average 08/09-12/13
Under 18	0	0%	4	0%	8	0%	7	0%	4	0%	---	0%	0%
18 - 24	1,197	67%	1,232	63%	1,382	60%	1,016	58%	1,080	59%	-10%	61%	54%
25 - 29	387	22%	444	23%	554	24%	421	24%	469	26%	21%	24%	27%
30 - 39	157	9%	222	11%	266	12%	236	13%	218	12%	39%	11%	14%
40 - 49	40	2%	45	2%	65	3%	50	3%	35	2%	-13%	2%	4%
50 and >	13	1%	16	1%	14	1%	21	1%	17	1%	31%	1%	1%
Total	1,794	100%	1,963	100%	2,289	100%	1,751	100%	1,823	100%	2%	100%	100%

Source: National Student Clearinghouse

Mesa College Fact Book 2014

Annual Transfer Volume by CSU-UC/Private (In-State)/Out-of-State: On average, between 2008/09 and 2012/13, nearly half of the Mesa College transfer volume was comprised of students who transferred into the California State University system (CSU) (44%), followed by students who transferred to out-of-state institutions (21%), the University of California system (UC) (19%), and in-state private institutions (16%). Transfer volume for students who transferred from Mesa College to an in-state private institution increased 16%, and transfer volume increased 9% for students transferring to out-of-state institutions between 2008/09 and 2012/13. Transfer volume decreased for students who transferred from Mesa College into the CSU system and UC system (4% each).

Figure 3.21. Mesa College Annual Transfers by CSU-UC/Private (In-State)/Out-of-State

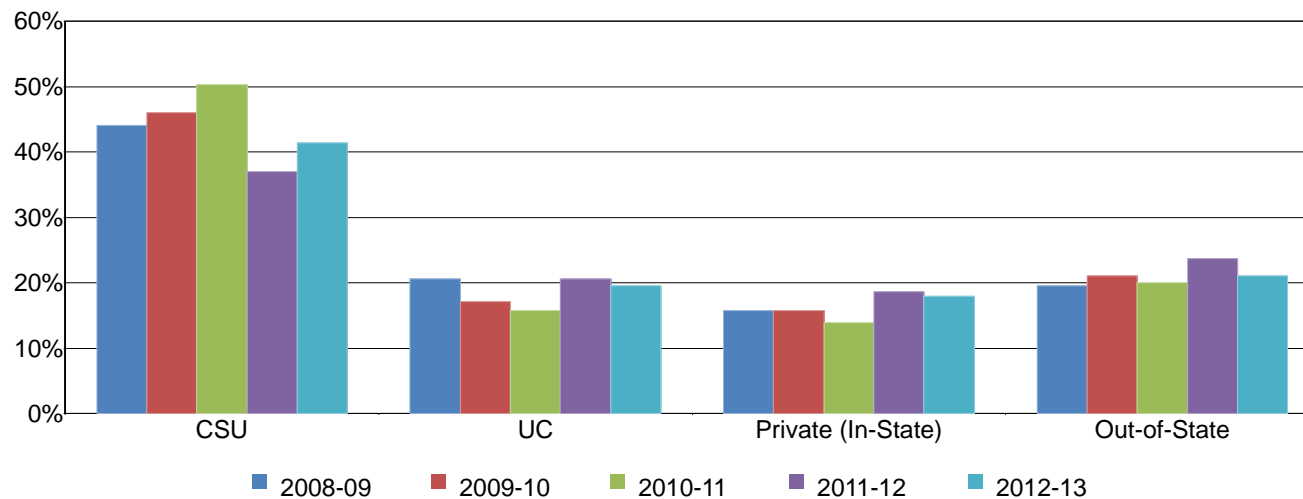


Table 3.21. Mesa College Annual Transfers by CSU-UC/Private (In-State)/Out-of-State

	2008-09		2009-10		2010-11		2011-12		2012-13		% Change 08/09-12/13	College Average 08/09-12/13	All Colleges Average 08/09-12/13
CSU	790	44%	903	46%	1,152	50%	648	37%	755	41%	-4%	44%	43%
UC	370	21%	337	17%	360	16%	361	21%	357	20%	-4%	19%	17%
Private (In-State)	282	16%	309	16%	319	14%	327	19%	327	18%	16%	16%	17%
Out-of-State	352	20%	414	21%	458	20%	415	24%	384	21%	9%	21%	23%
Total	1,794	100%	1,963	100%	2,289	100%	1,751	100%	1,823	100%	2%	100%	100%

Source: National Student Clearinghouse

Note. Out-of-State included both public and private 4-year institutions.

Mesa College Fact Book 2014

Annual Transfer Volume by CSU/UC: Of the total Mesa College transfer volume between 2008/09 and 2012/13, 63% of students transferred into either the California State University (CSU) or University of California (UC) systems on average (44% & 19%, respectively; see Table 3.21). Of the total number of students who transferred to CSU or UC systems, the majority went to the CSU (70%), and fewer than one third went to the UC (30%), on average. There was a decreased trend in the number of students who transferred from Mesa to both the CSU and UC systems (4% each) between 2008/09 and 2012/13.

Figure 3.22. Mesa College Annual Transfers by CSU/UC

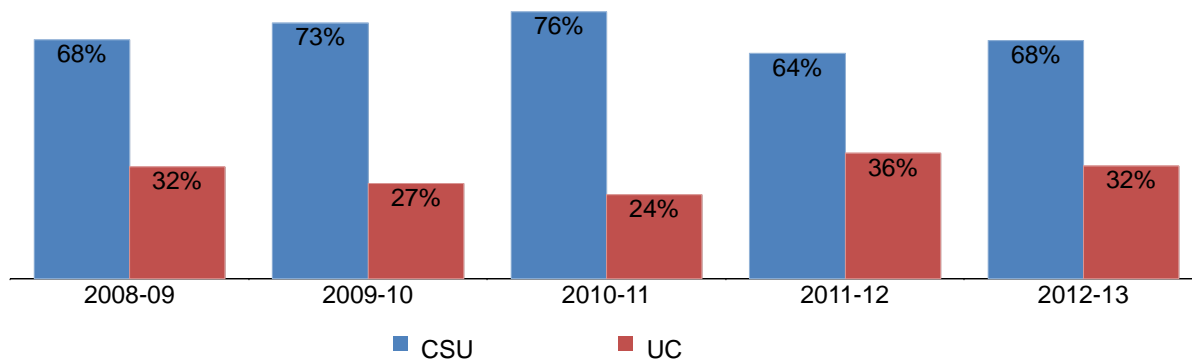


Table 3.22. Mesa College Annual Transfers by CSU/UC

	2008-09		2009-10		2010-11		2011-12		2012-13		% Change 08/09-12/13	College Average 08/09-12/13	All Colleges Average 08/09-12/13
CSU	790	68%	903	73%	1,152	76%	648	64%	755	68%	-4%	70%	72%
UC	370	32%	337	27%	360	24%	361	36%	357	32%	-4%	30%	28%
Total	1,160	100%	1,240	100%	1,512	100%	1,009	100%	1,112	100%	-4%	100%	100%

Source: National Student Clearinghouse

Mesa College Fact Book 2014

Annual Transfer Volume by Institution Type: Of those students who transferred from Mesa College, on average, 26% transferred to a private institution, and 74% transferred to a public institution. Transfers to public institutions decreased 3%, while transfers to private institutions increased 15% between 2008/09 and 2012/13.

Figure 3.23. Mesa College Annual Transfers by Institution Type

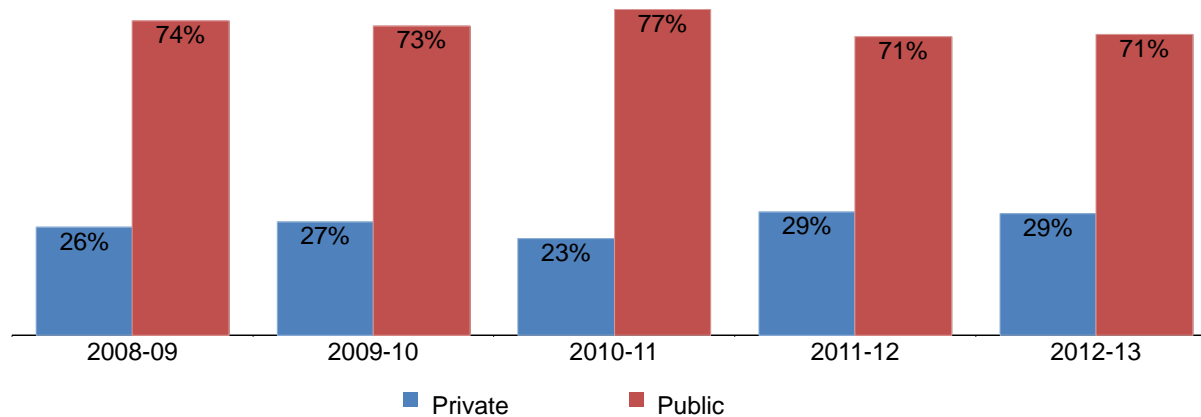


Table 3.23. Mesa College Annual Transfers by Institution Type

	2008-09		2009-10		2010-11		2011-12		2012-13		% Change 08/09-12/13	College Average 08/09-12/13	All Colleges Average 08/09-12/13
Private	458	26%	527	27%	525	23%	512	29%	525	29%	15%	26%	29%
Public	1,336	74%	1,436	73%	1,764	77%	1,239	71%	1,298	71%	-3%	74%	71%
Total	1,794	100%	1,963	100%	2,289	100%	1,751	100%	1,823	100%	2%	100%	100%

Source: National Student Clearinghouse

Note. Public and Private included both Out-of-State and In-State 4-year institutions.

**Section IV
Productivity and Efficiency**

Mesa College Fact Book 2014

This section of the Fact Book contains information on productivity and efficiency measures. The following describes in detail each of the measures:

- 1) FTES. The first measure reported in this section is a measure of productivity. FTES is the total number of full-time equivalent students enrolled. (Includes non-residents. Excludes non-state supported, cancelled, and tutoring classes.) F-Factor is included when reported annually.
- 2) Enrollments. The second measure in this section of the report is also a measure of productivity. Enrollments are the number of seats enrolled, or duplicated headcount, based on official census. Drops, never attends, cancelled, and tutoring classes are excluded.
- 3) Fill Rates. The third measure reported in this section is a measure of efficiency. Fill rates are the enrollment divided by the course enrollment capacity as set in the curriculum outline. Apprenticeship, in-service, cancelled, tutoring classes, and classes with a capacity of 0 or 1 are excluded.
- 4) Load. The fourth measure reported in this section is a measure of efficiency. Load is the ratio of Weekly Student Contact Hours (WSCH) to Full-time Equivalent Faculty (FTEF). Tutoring, positive attendance, and cancelled sections are excluded.

Mesa College Fact Book 2014

Annual Resident FTES: Mesa College resident FTES increased 1%, from 15,229 FTES in 2009/10 to 15,361 FTES in 2013/14. Resident credit FTES also increased 1% between 2009/10 and 2013/14. Mesa College did not claim any FTES for tutoring from 2009/10 to 2013/14; thus, resident noncredit FTES was reported as zero for these years.

Figure 4.1.1 Mesa College Annual Resident FTES

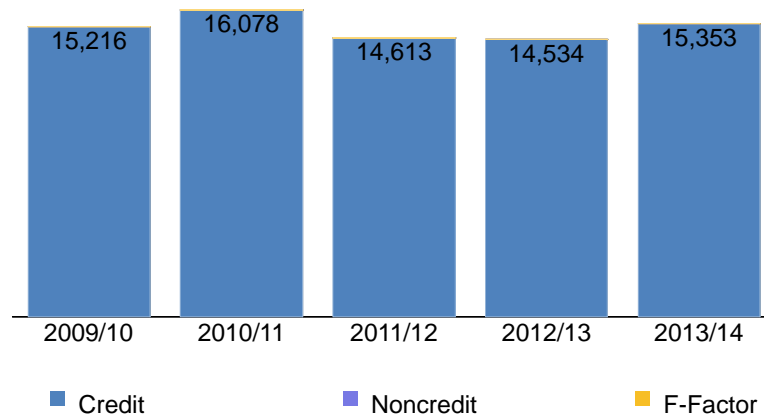


Table 4.1.1 Mesa College Annual Resident FTES

	2009/10	2010/11	2011/12	2012/13	2013/14
Credit	15,216.06	16,078.44	14,613.15	14,533.78	15,352.88
Noncredit	0.00	0.00	0.00	0.00	0.00
F-Factor	12.53	14.28	11.02	10.62	8.59
Total	15,228.59	16,092.72	14,624.17	14,544.40	15,361.47

Source: SDCCD Information System

Mesa College Fact Book 2014

Annual Nonresident FTES: Nonresident FTES increased 2%, from 681 FTES in 2009/10 to 696 FTES in 2013/14. Mesa College did not claim any FTES for tutoring from 2009/10 to 2013/14; thus, nonresident noncredit FTES was reported as zero for these years.

Figure 4.1.2 Mesa College Annual Nonresident FTES

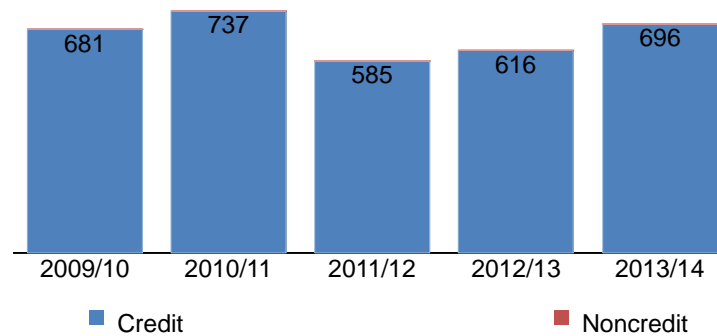


Table 4.1.2 Mesa College Annual Nonresident FTES

	2009/10	2010/11	2011/12	2012/13	2013/14
Credit	681.39	736.90	584.74	616.09	696.22
Noncredit	0.00	0.00	0.00	0.00	0.00
Total	681.39	736.90	584.74	616.09	696.22

Source: SDCCD Information System

Mesa College Fact Book 2014

Annual Overall FTES: Between 2009/10 and 2013/14, total FTES increased slightly (1%). Credit FTES increased 1%, from 15,897 FTES in 2009/10 to 16,049 FTES in 2013/14. Mesa College did not claim any FTES for tutoring from 2009/10 to 2013/14; thus, overall noncredit FTES was reported as zero for these years.

Figure 4.1.3 Mesa College Resident & Nonresident Annual Overall FTES

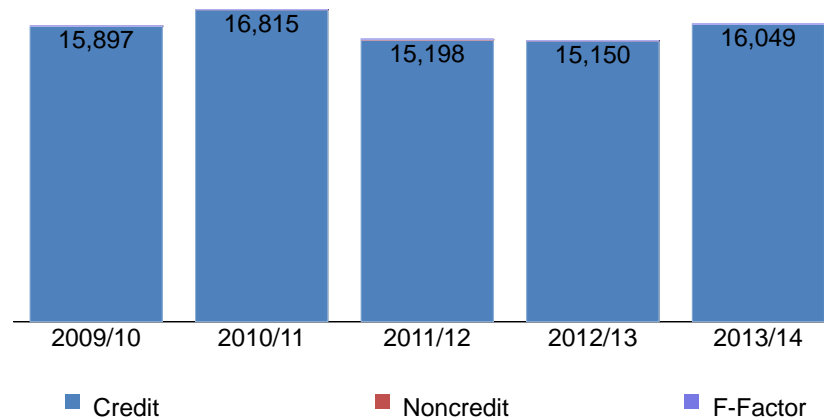


Table 4.1.3 Mesa College Resident & Nonresident Annual Overall FTES

	2009/10	2010/11	2011/12	2012/13	2013/14
Credit	15,897.44	16,815.34	15,197.89	15,149.87	16,049.10
Noncredit	0.00	0.00	0.00	0.00	0.00
F-Factor	12.53	14.28	11.02	10.62	8.59
Total	15,909.97	16,829.62	15,208.91	15,160.49	16,057.69

Source: SDCCD Information System

Mesa College Fact Book 2014

Enrollments: From Summer 2009 to Summer 2013, enrollment steadily decreased, with the most dramatic decrease occurring in Summer 2011. This mirrored the trend for all colleges in the District. From Fall 2009 to Fall 2013, overall enrollment increased 8%. During the same time period, Mesa’s online course enrollment increased 21%. From Spring 2010 to Spring 2014, overall college enrollment increased 2%, and online course enrollment increased 21%. Mesa College’s overall fall enrollment increased at a greater rate than that of all colleges in the District.

Figure 4.2.1 Mesa College Enrollments (Summer)

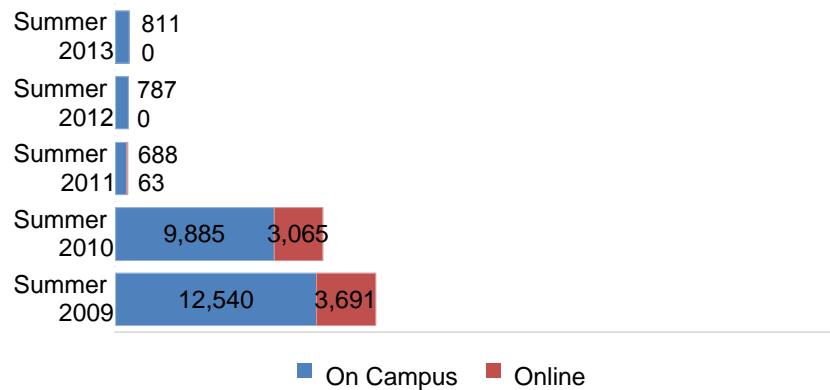


Figure 4.2.2 Mesa College Enrollments (Fall)

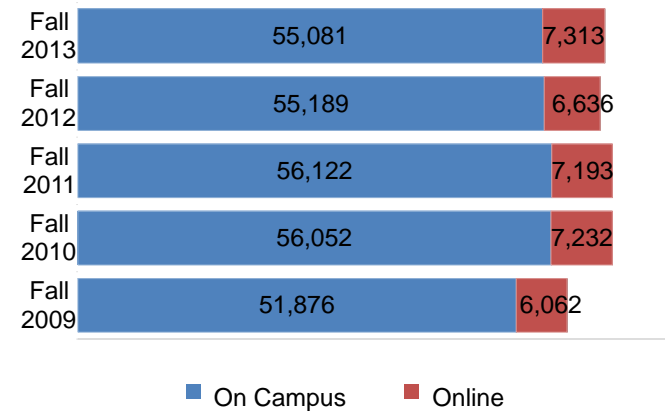
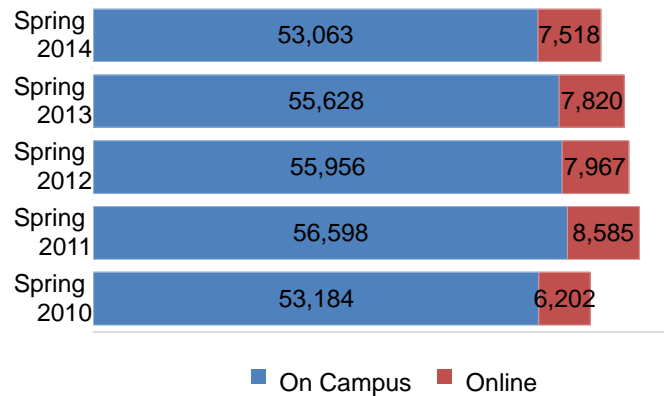


Figure 4.2.3. Mesa College Enrollments (Spring)



Mesa College Fact Book 2014

Fill Rates: On average, Mesa College overall fill rates were higher in fall (93%) and spring (90%) than in summer (89%) between 2009/10 and 2013/14. Over the past five years, fill rates decreased for summer, fall, and spring terms. In fall terms, on-campus courses had slightly higher fill rates than online courses (94% & 87%, respectively). A similar trend was observed for spring term on-campus and online course fill rates (90% & 85%, respectively). On average, Mesa College fill rates for the fall and spring terms were slightly higher than those for all colleges in the District.

Figure 4.3.1. Mesa College Fill Rates (Summer)

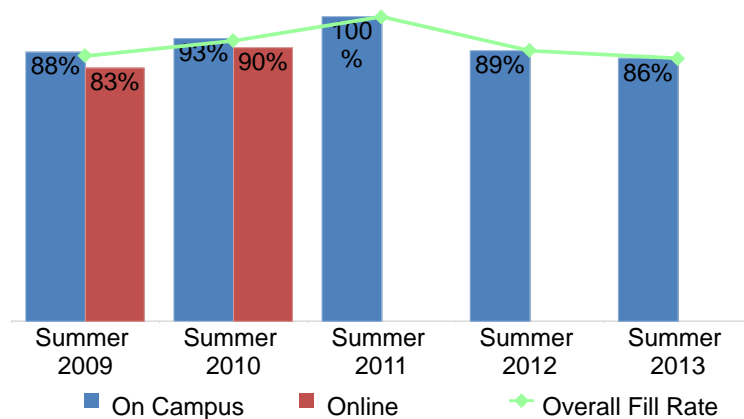


Figure 4.3.2. Mesa College Fill Rates (Fall)

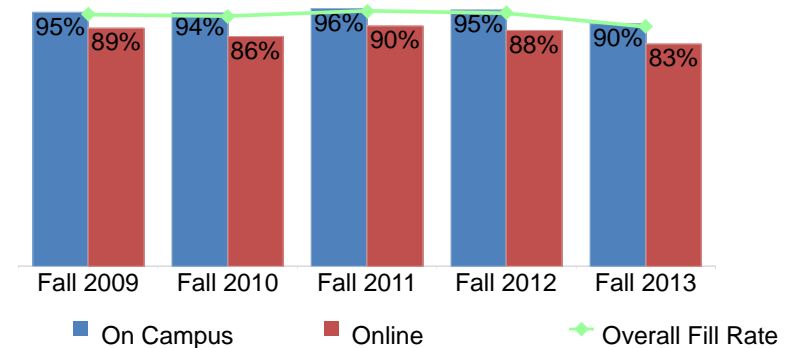
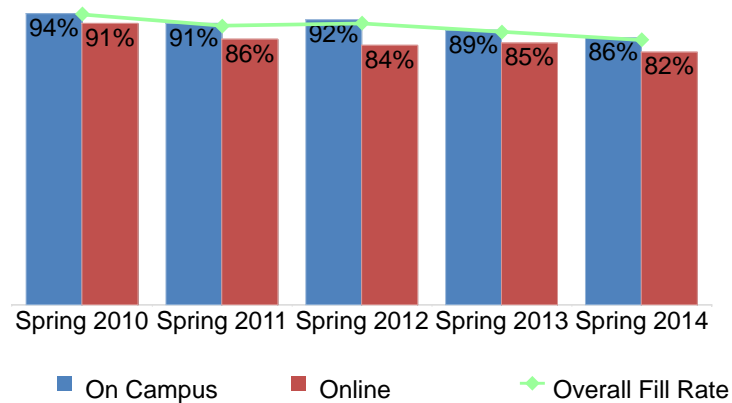


Figure 4.3.3. Mesa College Fill Rates (Spring)



Mesa College Fact Book 2014

Table 4.2. Mesa College Enrollments and Fill Rates

	On Campus			Online			Mesa College Total			All Colleges Total		
	Enrollment	Capacity	Fill Rate	Enrollment	Capacity	Fill Rate	Enrollment	Capacity	Fill Rate	Enrollment	Capacity	Fill Rate
Summer 2009	12,540	14,176	88%	3,691	4,439	83%	16,231	18,615	87%	39,262	45,761	88%
Summer 2010	9,885	10,564	93%	3,065	3,415	90%	12,950	13,979	92%	35,729	39,947	91%
Summer 2011	688	70	100%	63	0	---	751	70	100%	3,806	3,146	87%
Summer 2012	787	54	89%	0	0	---	787	54	89%	3,587	2,860	70%
Summer 2013	811	73	86%	0	0	---	811	73	86%	3,102	2,061	81%
Total/5-Yr Avg	24,711	24,937	90%	6,819	7,854	86%	31,530	32,791	89%	85,486	93,775	89%

	On Campus			Online			Mesa College Total			All Colleges Total		
	Enrollment	Capacity	Fill Rate	Enrollment	Capacity	Fill Rate	Enrollment	Capacity	Fill Rate	Enrollment	Capacity	Fill Rate
Fall 2009	51,876	53,224	95%	6,062	6,840	89%	57,938	60,064	94%	123,429	133,381	92%
Fall 2010	56,052	57,797	94%	7,232	8,454	86%	63,284	66,251	93%	131,415	141,921	92%
Fall 2011	56,122	56,610	96%	7,193	7,991	90%	63,315	64,601	95%	131,166	138,385	93%
Fall 2012	55,189	56,026	95%	6,636	7,559	88%	61,825	63,585	94%	125,198	130,635	94%
Fall 2013	55,081	59,134	90%	7,313	8,832	83%	62,394	67,966	89%	126,840	139,548	89%
Total/5-Yr Avg	274,320	282,791	94%	34,436	39,676	87%	308,756	322,467	93%	638,048	683,870	92%

	On Campus			Online			Mesa College Total			All Colleges Total		
	Enrollment	Capacity	Fill Rate	Enrollment	Capacity	Fill Rate	Enrollment	Capacity	Fill Rate	Enrollment	Capacity	Fill Rate
Spring 2010	53,184	55,076	94%	6,202	6,820	91%	59,386	61,896	94%	123,527	132,520	93%
Spring 2011	56,598	60,723	91%	8,585	10,006	86%	65,183	70,729	90%	133,643	147,340	90%
Spring 2012	55,956	58,628	92%	7,967	9,459	84%	63,923	68,087	91%	130,393	141,973	90%
Spring 2013	55,628	60,017	89%	7,820	9,242	85%	63,448	69,259	88%	126,807	139,170	89%
Spring 2014	53,063	59,530	86%	7,518	9,209	82%	60,581	68,739	86%	124,305	143,062	85%
Total/5-Yr Avg	274,429	293,974	90%	38,092	44,736	85%	312,521	338,710	90%	638,675	704,065	89%

Source: SDCCD Information System

Note. Using the figures in the tables will give approximate fill rates since additional parameters are used to calculate the fill rate.

Mesa College Fact Book 2014

Load: From Fall 2009 to Fall 2013, Mesa College’s load values displayed fluctuation. Between Spring 2010 and Spring 2014, Mesa’s load values saw a moderate decrease. Mesa College Load values were generally lower than those of all the colleges in the District. The statewide benchmark for Load is 525 for a 17.5 week semester. SDCCD has set an internal benchmark of 557, which is commensurate to its 16.5 week semester.

Figure 4.4.1. Mesa College Load (Fall)



Figure 4.4.2. Mesa College Load (Spring)



Table 4.4. Mesa College Load

	Mesa College Load	All Colleges Load
Fall 2009	568	575
Fall 2010	570	574
Fall 2011	588	584
Fall 2012	586	583
Fall 2013	556	558
Spring 2010	577	583
Spring 2011	553	554
Spring 2012	575	576
Spring 2013	562	562
Spring 2014	521	527

Source: SDCCD Information System

**Section V
Human Resources**

Mesa College Fact Book 2014

This section of the Fact Book contains information on the number and classification of employees during the Fall 2013 semester. The information is reported as follows:

- 1) Gender
- 2) Ethnicity
- 3) Employment Type

Mesa College Fact Book 2014

Fall 2013 Employee Breakdown: There were a total of 1,345 employees working at Mesa College in Fall 2013. Adjunct faculty comprised the largest percentage of Mesa employees (55%), followed by contract faculty (17%), non-academic hourly (15%), and classified staff (10%). Supervisory staff and management constituted the smallest proportions of Mesa employees at 2% and 1%, respectively.

The ethnic breakdown showed that White employees constituted 56% of the total employee population, followed by Asian and Latino employees (13% each), and African American employees (7%). Among classified staff, White employees constituted nearly half of the employees (45%) and made up approximately two thirds of the faculty positions (60% of contract and 65% of adjunct faculty) at Mesa. White employees constituted the majority (60%) of management positions, while Latino and African American employees held a combined 26% of the management positions (13% each), although the number of management positions was very small (n = 15). Among supervisory staff positions, White employees constituted 36% of this group, while African American, Asian, and Latino employees together comprised 54% (18% each) of this group. Again, the number of supervisory positions was relatively small (n = 22).

Figure 5.1. Mesa College Fall 2013 Employees by Employment Type

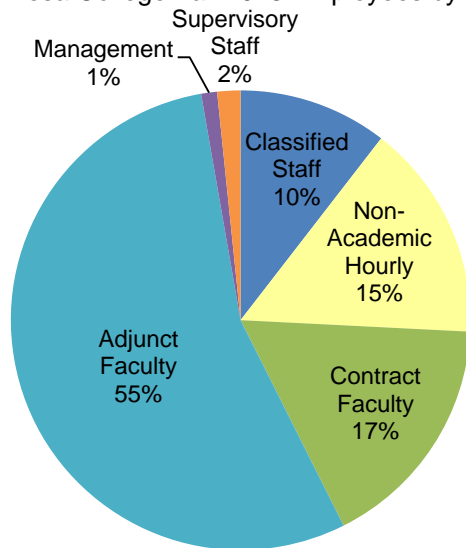
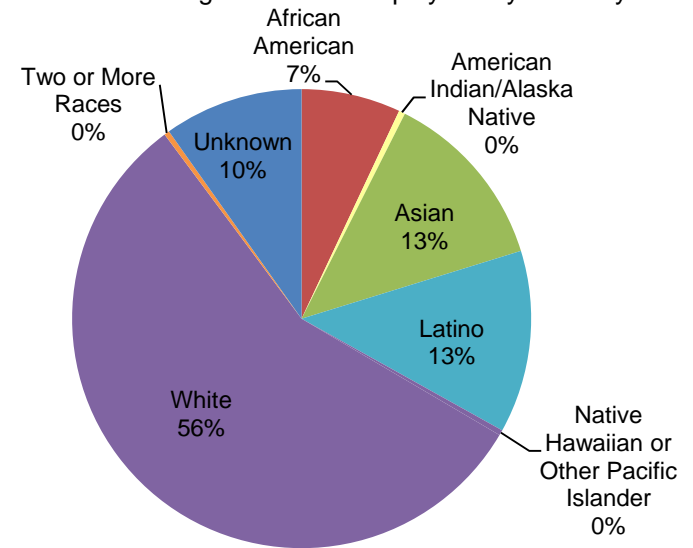


Figure 5.2. Mesa College Fall 2013 Employees by Ethnicity



Mesa College Fact Book 2014

Table 5.1. Mesa College Fall 2013 Employees by Ethnicity

	African American		American Indian/ Alaska Native		Asian		Latino		Native Hawaiian or Other Pacific Islander		White		Two or More Races		Unreported		Total
Total Employees:	94	7%	6	0%	172	13%	173	13%	5	0%	758	56%	5	0%	132	10%	1,345
Female:	52	7%	2	0%	114	15%	93	13%	0	0%	403	55%	3	0%	71	10%	738
Male:	42	7%	4	1%	58	10%	80	13%	5	1%	355	58%	2	0%	61	10%	607
Classified Staff :	13	9%	0	0%	19	13%	31	22%	1	1%	63	45%	0	0%	14	10%	141
Female:	9	9%	0	0%	13	14%	20	21%	0	0%	47	49%	0	0%	6	6%	95
Male:	4	9%	0	0%	6	13%	11	24%	1	2%	16	35%	0	0%	8	17%	46
Non-Academic Hourly:	24	12%	1	0%	57	28%	35	17%	3	1%	64	31%	2	1%	20	10%	206
Female:	12	10%	1	1%	37	32%	18	16%	0	0%	37	32%	1	1%	10	9%	116
Male:	12	13%	0	0%	20	22%	17	19%	3	3%	27	30%	1	1%	10	11%	90
Contract Faculty:	14	6%	1	0%	21	9%	28	12%	0	0%	135	60%	0	0%	27	12%	226
Female:	7	6%	0	0%	14	12%	14	12%	0	0%	69	58%	0	0%	15	13%	119
Male:	7	7%	1	1%	7	7%	14	13%	0	0%	66	62%	0	0%	12	11%	107
Adjunct Faculty:	37	5%	4	1%	71	10%	73	10%	1	0%	479	65%	3	0%	67	9%	735
Female:	20	5%	1	0%	46	12%	36	9%	0	0%	238	63%	2	1%	37	10%	380
Male:	17	5%	3	1%	25	7%	37	10%	1	0%	241	68%	1	0%	30	8%	355
Management:	2	13%	0	0%	0	0%	2	13%	0	0%	9	60%	0	0%	2	13%	15
Female:	2	20%	0	0%	0	0%	2	20%	0	0%	5	50%	0	0%	1	10%	10
Male:	0	0%	0	0%	0	0%	0	0%	0	0%	4	80%	0	0%	1	20%	5
Supervisory Staff:	4	18%	0	0%	4	18%	4	18%	0	0%	8	36%	0	0%	2	9%	22
Female:	2	11%	0	0%	4	22%	3	17%	0	0%	7	39%	0	0%	2	11%	18
Male:	2	50%	0	0%	0	0%	1	25%	0	0%	1	25%	0	0%	0	0%	4

Source: SDCCD Information System

Table 5.2. Mesa College Employees by Gender and Employment Status

	Gender		Employment Status	
	Female	55%	Full-Time/Contract	30%
Male	45%	Hourly/Adjunct	70%	

Source: SDCCD Information System