



The San Diego Community College District

# **ANNUAL HIGH SCHOOL TO COMMUNITY COLLEGE PIPELINE REPORT**

## **Volume I Districtwide**

**Fall 2007 Reporting Period**

Prepared by:  
Office of Institutional Research and Planning  
The San Diego Community College District

# Table of Contents

Introduction.....	1
Populations of Interest .....	2
Chapter 1: San Diego County High School Seniors: Class of 2007.....	3
Section 1.1 District and Non-District Feeders.....	3
Section 1.2 2007 High School Senior Class Portrait.....	5
Section 1.3 2007 High School Senior Class Accomplishments .....	9
Chapter 2: Entering the Community College Pipeline .....	12
Section 2.1 SDCCD Enrollees – Direct and Delayed Entry.....	12
Section 2.2 Demographic Characteristics of Entering High School Graduates .....	17
Chapter 3: College Placement .....	20
Section 3.1 Reading Placement Outcomes .....	21
Section 3.2 Writing Placement Outcomes.....	22
Section 3.3 Math Placement Outcomes.....	23
Chapter 4: First-Semester Outcomes .....	24
Section 4.1 Setting the Context .....	24
Section 4.2 Average Unit Completion.....	26
Section 4.3 Retention.....	27
Section 4.4 Successful Course Completion.....	29
Section 4.5 Course Outcomes.....	31
Chapter 5: Conclusion .....	35
Section 5.1 Summary of Findings .....	35
Section 5.2 Reflective Questions for Further Inquiry.....	36

## Introduction

The Annual High School to Community College Pipeline Report provides the San Diego Community College District (SDCCD) community a comprehensive and descriptive analysis of recent high school graduates from local area high schools attending one of the district colleges for the first time. The report is part of a larger initiative to provide the colleges and the district with information for integrating plans and strategies that support student success and enrollment management. The report is intended to inform college and district decision-making, instructional programs and support services planning, and outreach and marketing.

This report is presented in four volumes. Volume 1 provides data for the entire district and the remaining three volumes contain information specific to the district's three colleges: City College, Volume 2; Mesa College, Volume 3; and Miramar College, Volume 4. Each volume contains five chapters. Figure 1 depicts the flow of the pipeline as presented in the first four chapters. Chapter 1 provides a descriptive profile of the high schools included in the report. Chapter 2 focuses on the demographic characteristics of the pipeline students and their entry into the San Diego Community College District. College placement is examined in Chapter 3, while first-semester performance in the district is reported in Chapter 4. Finally, Chapter 5 provides a concluding summary.

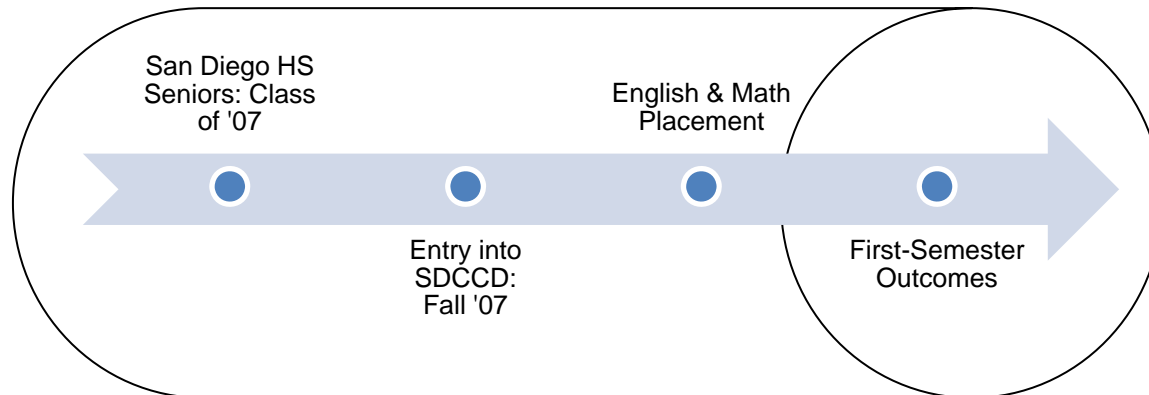


Figure 1. *High school to community college pipeline framework.*

## Populations of Interest

**2007 Feeder High School Cohort:** This cohort is defined as students who graduated from high school in June 2007 and enrolled in the district as first-time college students in fall 2007. The students in this cohort were selected from the district's student database using the following three criteria: (1) the student reported on their admissions application that they graduated from high school in 2007, (2) the student reported on their application that they received a high school diploma, and (3) the student enrolled in at least 0.5 units in fall 2007.

**Direct Entry Students:** Students who graduate from high school in the term preceding the fall term of the reporting year, thus enrolling in an SDCCD college directly after high school. The direct entrants in the 2007 Annual High School to Community College Pipeline Report graduated from high school in June 2007, thus enrolling in City, Mesa, or Miramar College for the first time in fall 2007 directly after high school.

**Delayed Entry Students:** Students who graduate from high school one to three years prior to the reporting year, thus delaying enrollment in an SDCCD college one to three years after high school graduation. The delayed entrants in the 2007 Annual High School to Community College Pipeline Report graduated from high school during the period of June 2004 to June 2006, thus delaying enrollment for one to three years and enrolling in City, Mesa, or Miramar College for the first time in fall 2007.

## Chapter 1: San Diego County High School Seniors: Class of 2007

This chapter comprises two sections, each of which provides a different aspect of the feeder high schools described in this report. In Section 1.1, the feeder high schools selected for this report are categorized as either district or non-district feeders. Section 1.2 focuses on the demographic and academic characteristics of the 2007 senior class for each high school.

### Section 1.1 District and Non-District Feeders

This report provides information on two types of feeder high schools: (1) district feeder –those high schools located within the district’s service area zip codes, and (2) non-district feeder –San Diego County area public high schools located outside of the district’s service area zip codes. Only those non-district feeder high schools that had 10 or more first-time students enrolled at SDCCD were included. A list of the 19 district feeder and 27 non-district feeder high schools described in this report is provided in Table 1.

Table 1  
*High Schools Reported: District and Non-District Feeders*

District Feeder High Schools		Non-District Feeder High Schools
Feeder High School	Service Area College	Abraxas
Clairemont	Mesa	Bonita
Crawford	City	Castle Park
Garfield	City	Chula Vista
Gompers	City	Coronado
Henry	Mesa	El Cajon Valley
Hoover	City	El Capitan
Kearny	Mesa	Escondido
La Jolla	Mesa	Granite Hills
Madison	Mesa	Grossmont
Mark Twain	Mesa	Helix
Mira Mesa	Miramar	Hilltop
Mission Bay	Mesa	Mar Vista
Morse	City	Monte Vista
Point Loma	City	Montgomery
San Diego	City	Mount Miguel
Scripps Ranch	Miramar	Mt. Carmel
SDC&PA	City	Poway
Serra	Mesa	Ramona
University City	Mesa	Rancho Bernardo
		Santana
		Southwest
		Sweetwater
		Torrey Pines
		Valhalla
		West Hills
		Westview

## Section 1.2 2007 High School Senior Class Portrait

Table 2 (district and non-district feeders) shows the gender compositions of the high school senior classes while Tables 3 (district feeders) and 4 (non-district feeders) disaggregate the high school senior classes by race/ethnicity.

### 2007 Senior Class Portrait: Feeder High Schools (Tables 2 and 3)

- The average senior class size among the district feeders was 351 students.
- The average percent of females and males was 52% and 48%, respectively.
- In terms of ethnic composition, on average, high school seniors from the district feeders were 34% Latino, 30% white, 14% African American, 13% Asian / Pacific Islander, 9% Filipino, and <1% American Indian, with Latinos constituting the largest proportion of students.

### 2007 Senior Class Portrait: Non-District Feeder High Schools (Tables 2 and 4)

- The average senior class enrollment for the non-district feeders was 552 students.
- The average percent of females and males was 49% and 51%, respectively.
- In terms of ethnic composition, on average, high school seniors from the non-district feeders were 45% white, 37% Latino, 6% Asian / Pacific Islander, 5% African American, 4% Filipino, and <1% American Indian, with whites constituting the largest proportion of students.

Table 2  
2007 High School Senior Class Portrait: GENDER (District and Non-District Feeders)

District Feeder High Schools						Non-District Feeder High Schools					
High School	Senior Class 2007	Gender				High School	Senior Class 2007	Gender			
		Female N	%	Male N	%			Female N	%	Male N	%
Clairemont	283	135	48%	148	52%	Abraxas	298	100	34%	198	66%
Crawford	286	135	47%	151	53%	Bonita	649	318	49%	331	51%
Garfield	179	105	59%	74	41%	Castle Park	545	255	47%	290	53%
Gompers	145	79	54%	66	46%	Chula Vista	667	372	56%	295	44%
Henry	502	260	52%	242	48%	Coronado	256	132	52%	124	48%
Hoover	348	173	50%	175	50%	El Cajon Valley	468	233	50%	235	50%
Kearny	327	144	44%	183	56%	El Capitan	419	192	46%	227	54%
La Jolla	363	191	53%	172	47%	Escondido	503	255	51%	248	49%
Madison	305	160	52%	145	48%	Granite Hills	663	334	50%	329	50%
Mark Twain	250	117	47%	133	53%	Grossmont	582	294	51%	288	49%
Mira Mesa	554	257	46%	297	54%	Helix	572	282	49%	290	51%
Mission Bay	279	142	51%	137	49%	Hilltop	606	312	51%	294	49%
Morse	506	251	50%	255	50%	Mar Vista	563	267	47%	296	53%
Point Loma	344	165	48%	179	52%	Monte Vista	436	219	50%	217	50%
San Diego	479	292	61%	187	39%	Montgomery	640	288	45%	352	55%
Scripps Ranch	531	292	55%	239	45%	Mount Miguel	455	223	49%	232	51%
SDC&PA	190	120	63%	70	37%	Mt. Carmel	568	264	46%	304	54%
Serra	388	208	54%	180	46%	Poway	727	346	48%	381	52%
University City	416	220	53%	196	47%	Ramona	400	195	49%	205	51%
TOTAL	6,675	3,446	52%	3,229	48%	Rancho Bernardo	688	352	51%	336	49%
						Santana	413	200	48%	213	52%
						Southwest	557	281	50%	276	50%
						Sweetwater	712	358	50%	354	50%
						Torrey Pines	912	447	49%	465	51%
						Valhalla	481	236	49%	245	51%
						West Hills	562	321	57%	241	43%
						Westview	564	279	49%	285	51%
						TOTAL	14,906	7,355	49%	7,551	51%

Data Source: California Department of Education



Table 3  
2007 High School Senior Class Portrait: ETHNICITY (District Feeders)

High School	Senior Class 2007	Race/Ethnicity														
		American Indian		African American		Asian / Pac Islander		Filipino		Latino		White		Unreported		
		N	%	N	%	N	%	N	%	N	%	N	%	N	%	
Clairemont	283	0	0%	16	6%	17	6%	3	1%	100	35%	147	52%	0	0%	
Crawford	286	1	0%	85	30%	72	25%	1	0%	110	38%	17	6%	0	0%	
Garfield	179	0	0%	33	18%	6	3%	4	2%	115	64%	20	11%	1	1%	
Gompers	145	0	0%	36	25%	28	19%	1	1%	79	54%	1	1%	0	0%	
Henry	502	5	1%	57	11%	57	11%	10	2%	123	25%	249	50%	1	0%	
Hoover	348	0	0%	58	17%	62	18%	2	1%	212	61%	14	4%	0	0%	
Kearny	327	0	0%	57	17%	79	24%	18	6%	114	35%	59	18%	0	0%	
La Jolla	363	0	0%	4	1%	41	11%	4	1%	79	22%	235	65%	0	0%	
Madison	305	2	1%	43	14%	31	10%	7	2%	128	42%	94	31%	0	0%	
Mark Twain	250	3	1%	42	17%	13	5%	28	11%	124	50%	39	16%	1	0%	
Mira Mesa	554	1	0%	46	8%	127	23%	175	32%	62	11%	143	26%	0	0%	
Mission Bay	279	1	0%	55	20%	28	10%	3	1%	119	43%	73	26%	0	0%	
Morse	506	2	0%	100	20%	38	8%	241	48%	101	20%	24	5%	0	0%	
Point Loma	344	1	0%	20	6%	13	4%	4	1%	121	35%	185	54%	0	0%	
San Diego	479	1	0%	79	16%	14	3%	5	1%	330	69%	50	10%	0	0%	
Scripps Ranch	531	2	0%	45	8%	108	20%	37	7%	82	15%	257	48%	0	0%	
SDC&PA	190	0	0%	47	25%	10	5%	18	9%	52	27%	63	33%	0	0%	
Serra	388	4	1%	64	16%	55	14%	23	6%	105	27%	137	35%	0	0%	
University City	416	4	1%	53	13%	54	13%	41	10%	100	24%	164	39%	0	0%	
<b>TOTAL</b>	<b>6,675</b>	<b>27</b>	<b>0%</b>	<b>940</b>	<b>14%</b>	<b>853</b>	<b>13%</b>	<b>625</b>	<b>9%</b>	<b>2,256</b>	<b>34%</b>	<b>1,971</b>	<b>30%</b>	<b>3</b>	<b>0%</b>	
<b>AVERAGE</b>	<b>351</b>															
<u>Data Source.</u> California Department of Education																

Table 4  
2007 High School Senior Class Portrait: ETHNICITY (Non-District Feeders)

High School	Senior Class 2007	American Indian		African American		Asian / Pac Islander		Filipino		Latino		White		Unreported	
		N	%	N	%	N	%	N	%	N	%	N	%	N	%
Abraxas	298	2	1%	13	4%	18	6%	13	4%	61	20%	181	61%	10	3%
Bonita	649	5	1%	31	5%	43	7%	61	9%	347	53%	161	25%	1	0%
Castle Park	545	3	1%	20	4%	4	1%	15	3%	457	84%	46	8%	0	0%
Chula Vista	667	4	1%	30	4%	16	2%	16	2%	550	82%	50	7%	1	0%
Coronado	256	1	0%	6	2%	1	0%	12	5%	40	16%	193	75%	3	1%
El Cajon Valley	468	1	0%	49	10%	13	3%	9	2%	196	42%	197	42%	3	1%
El Capitan	419	14	3%	5	1%	4	1%	5	1%	45	11%	337	80%	9	2%
Escondido	503	6	1%	17	3%	24	5%	18	4%	229	46%	202	40%	7	1%
Granite Hills	663	27	4%	16	2%	17	3%	7	1%	112	17%	476	72%	8	1%
Grossmont	582	13	2%	48	8%	18	3%	2	0%	136	23%	336	58%	29	5%
Helix	572	7	1%	120	21%	47	8%	7	1%	176	31%	202	35%	13	2%
Hilltop	606	6	1%	14	2%	20	3%	14	2%	410	68%	142	23%	0	0%
Mar Vista	563	6	1%	24	4%	12	2%	36	6%	365	65%	117	21%	3	1%
Monte Vista	436	8	2%	67	15%	21	5%	8	2%	176	40%	145	33%	11	3%
Montgomery	640	2	0%	23	4%	14	2%	69	11%	498	78%	30	5%	4	1%
Mount Miguel	455	13	3%	105	23%	25	5%	19	4%	185	41%	93	20%	15	3%
Mt. Carmel	568	0	0%	17	3%	88	15%	84	15%	47	8%	320	56%	12	2%
Poway	727	4	1%	17	2%	34	5%	17	2%	73	10%	553	76%	29	4%
Ramona	400	5	1%	6	2%	2	1%	1	0%	74	19%	312	78%	0	0%
Rancho Bernardo	688	4	1%	21	3%	116	17%	37	5%	65	9%	432	63%	13	2%
Santana	413	5	1%	5	1%	5	1%	3	1%	54	13%	338	82%	3	1%
Southwest	557	1	0%	20	4%	5	1%	46	8%	468	84%	17	3%	0	0%
Sweetwater	712	4	1%	24	3%	12	2%	89	13%	559	79%	22	3%	2	0%
Torrey Pines	912	3	0%	9	1%	149	16%	7	1%	79	9%	660	72%	5	1%
Valhalla	481	3	1%	24	5%	15	3%	4	1%	70	15%	346	72%	19	4%
West Hills	562	11	2%	9	2%	12	2%	1	0%	70	12%	441	78%	18	3%
Westview	564	1	0%	21	4%	132	23%	46	8%	51	9%	291	52%	22	4%
TOTAL	14,906	159	1%	761	5%	867	6%	646	4%	5,593	37%	6,640	45%	240	2%
AVERAGE	552														
Data Source: California Department of Education															

### Section 1.3 2007 High School Senior Class Accomplishments

Tables 5 and 6 show the percentages of the senior class that: (1) graduated from high school, and (2) completed all A-G requirements. In addition, for the students who took the Scholastic Aptitude Test (SAT) in 2006-07, the average verbal, math, writing, and total scores are presented.

#### 2007 Senior Class Accomplishments: District Feeder High Schools (Table 5)

- On average, 86% of the district feeder high school seniors successfully graduated from high school.
- 29% of the district feeder seniors completed their A-G requirements.
- The average SAT verbal, math, and writing scores were 450, 425, and 458 respectively.

#### 2007 Senior Class Accomplishments: Non-District Feeder High Schools (Table 6)

- 81% of the seniors from the non-district feeder high schools successfully graduated from high school.
- 34% percent completed their A-G requirements.
- Non-district feeder seniors had average SAT verbal, math, and writing scores of 491, 509, and 487 respectively.

Please note that a subsequent report will be issued by the San Diego Community College District containing information on SAT scores as they relate to placement scores.

Table 5  
Academic Profile of 2007 High School Seniors (District Feeders)

High School	Senior Class 2007	Senior Class Graduates 2007		A - G Completers		2006-07 SAT Scores		
		N	%	N	%	Mean SAT Verbal	Mean SAT Math	Mean SAT Writing
Clairemont	283	249	88%	129	52%	471	471	474
Crawford	286	217	76%	54	25%	398	405	389
Garfield	179	172	96%	0	0%	---	---	---
Gompers	145	117	81%	41	35%	376	380	365
Henry	502	444	88%	189	43%	521	520	501
Hoover	348	285	82%	93	33%	393	429	394
Kearny	327	264	81%	87	33%	434	453	423
La Jolla	363	358	99%	234	65%	574	593	572
Madison	305	239	78%	74	31%	446	435	436
Mark Twain	250	44	18%	3	7%	---	---	---
Mira Mesa	554	519	94%	239	46%	476	504	469
Mission Bay	279	261	94%	79	30%	459	470	458
Morse	506	453	90%	167	37%	442	468	436
Point Loma	344	309	90%	113	37%	495	514	495
San Diego	479	411	86%	149	36%	407	416	405
Scripps Ranch	531	483	91%	274	57%	532	553	523
SDC&PA	190	174	92%	73	42%	473	461	461
Serra	388	360	93%	159	44%	477	482	472
University City	416	387	93%	154	40%	524	541	519
<b>TOTAL</b>	<b>6,675</b>	<b>5,746</b>	<b>86%</b>	<b>1,948</b>	<b>29%</b>			
<b>AVERAGE</b>	<b>351</b>					<b>450</b>	<b>425</b>	<b>458</b>
<u>Data Source.</u> California Department of Education								
<u>Note.</u> A to G completers are defined as students who complete a defined set of courses required for CSU/UC admission.								

Table 6  
Academic Profile of 2007 High School Seniors (Non-District Feeders)

High School	Senior Class 2007	Senior Class Graduates 2007		A - G Completers		2006-07 SAT Scores		
		N	%	N	%	Mean SAT Verbal	Mean SAT Math	Mean SAT Writing
Abraxas	298	139	47%	0	0%	NA	NA	NA
Bonita	649	544	84%	253	47%	483	512	484
Castle Park	545	377	69%	155	41%	424	445	420
Chula Vista	667	522	78%	179	34%	456	460	450
Coronado	256	247	96%	121	49%	555	557	550
El Cajon Valley	468	302	65%	68	23%	442	458	451
El Capitan	419	347	83%	85	25%	506	527	494
Escondido	503	450	89%	128	28%	494	509	483
Granite Hills	663	546	82%	205	38%	501	529	502
Grossmont	582	467	80%	196	42%	528	535	523
Helix	572	460	80%	264	57%	477	493	480
Hilltop	606	462	76%	163	35%	472	478	463
Mar Vista	563	404	72%	122	30%	449	457	439
Monte Vista	436	343	79%	117	34%	473	500	466
Montgomery	640	400	63%	143	36%	431	433	415
Mount Miguel	455	307	67%	91	30%	440	465	435
Mt. Carmel	568	537	95%	334	62%	531	566	518
Poway	727	666	92%	361	54%	545	566	541
Ramona	400	366	92%	193	53%	514	517	509
Rancho Bernardo	688	646	94%	442	68%	541	577	545
Santana	413	340	82%	103	30%	490	515	498
Southwest	557	383	69%	101	26%	439	451	430
Sweetwater	712	559	79%	127	23%	435	449	427
Torrey Pines	912	883	97%	573	65%	576	613	582
Valhalla	481	397	83%	180	45%	525	530	522
West Hills	562	505	90%	196	39%	504	527	500
Westview	564	534	95%	377	71%	545	566	543
<b>TOTAL</b>	<b>14,906</b>	<b>12,133</b>	<b>81%</b>	<b>5,033</b>	<b>34%</b>			
<b>AVERAGE</b>	<b>552</b>					<b>491</b>	<b>509</b>	<b>487</b>

Data Source: California Department of Education  
 Note: A to G completers are defined as students who complete a defined set of courses required for CSU/UC admission.

## Chapter 2: Entering the Community College Pipeline

This chapter consists of two sections that describe the enrollment patterns and demographic characteristics of the high school to community college pipeline students. In particular, Section 2.1 shows the high school enrollment rates disaggregated by direct and delayed entry, while Section 2.2 examines demographic characteristics (gender, ethnicity, first-generation college student status).

### Section 2.1 SDCCD Enrollees – Direct and Delayed Entry

#### SDCCD Enrollees: District Feeder High Schools

- Approximately 35% of the 2007 district feeder high school graduates directly entered SDCCD in fall 2007 (see Table 7).
- The percent of SDCCD fall 2007 direct entry enrollees from the 2007 graduating high school senior classes of the district feeders ranged from 18% (Henry High School) to 54% (Clairemont High School) (see Table 7).
- On average, from 2003 to 2007 the percent change in the number of SDCCD direct entry enrollees from district feeder high schools was 12% (see Table 7).
- Although the graduating senior class sizes decreased slightly over the five-year period, the number of high school graduates enrolling at SDCCD, as well as the percent capture rate, increased slightly yet steadily over the five years with the exception of a dip in 2005 (see Table 9 and Figures 2 and 3). Percent capture rate is the proportion of high school graduates enrolling at SDCCD.
- Approximately 5% of the district feeder high school graduates who enrolled at SDCCD in fall 2007 were delayed entry students (see Table 9).

#### SDCCD Enrollees: Non-District Feeder High Schools

- Approximately 11% of the 2007 non-district feeder high school graduates directly entered SDCCD in fall 2007 (see Table 8).
- The percents of SDCCD fall 2007 direct entry enrollees from the 2007 graduating high school senior classes of the non-district feeders ranged from 4% (Ramona and Valhalla High Schools) to 26% (Mt. Carmel High School) (see Table 8).
- On average, from 2003 to 2007 the percent change in the number of SDCCD direct entry enrollees from non-district feeder high schools was 42% (Table 8).
- Although the graduating senior class sizes remained rather stable, the number of high school graduates enrolling at SDCCD, as well as the percent capture rate, increased slightly yet steadily over the five years with the exception of a dip in 2005 (see Table 10 and Figures 4 and 5). Percent capture rate is the proportion of high school graduates enrolling at SDCCD.
- Approximately 7% of the non-district feeder high school graduates who enrolled at SDCCD in fall 2007 were delayed entry students (see Table 10).

Table 7  
SDCCD Enrollees - Direct Entry (District Feeders)

	FALL 03			FALL 04			FALL 05			FALL 06			FALL 07			2003 to 2007 % Change	
	HS Grads	Direct Entrants N	Direct Entry %	HS Grads	Direct Entrants N	Direct Entry %	HS Grads	Direct Entrants N	Direct Entry %	HS Grads	Direct Entrants N	Direct Entry %	HS Grads	Direct Entrants N	Direct Entry %	HS Grads	Direct Entrants %
Clairemont	226	72	32%	236	104	44%	254	107	42%	226	117	52%	249	135	54%	10%	88%
Crawford	267	73	27%	266	82	31%	259	73	28%	213	87	41%	217	77	35%	-19%	5%
Garfield	168	56	33%	174	44	25%	187	37	20%	169	51	30%	172	55	32%	2%	-2%
Gompers	88	20	23%	106	20	19%	105	22	21%	101	27	27%	117	36	31%	33%	80%
Henry	422	34	8%	407	53	13%	448	52	12%	443	56	13%	444	82	18%	5%	141%
Hoover	269	100	37%	262	97	37%	306	112	37%	276	110	40%	285	111	39%	6%	11%
Kearny	298	134	45%	285	128	45%	290	148	51%	251	121	48%	264	127	48%	-11%	-5%
La Jolla	364	71	20%	381	88	23%	349	65	19%	371	86	23%	358	96	27%	-2%	35%
Madison	267	108	40%	235	106	45%	255	95	37%	247	99	40%	239	109	46%	-10%	1%
Mark Twain	77	9	12%	59	9	15%	88	10	11%	96	12	13%	44	23	52%	-43%	156%
Mira Mesa	585	279	48%	511	222	43%	538	242	45%	510	255	50%	519	247	48%	-11%	-11%
Mission Bay	299	93	31%	304	105	35%	281	99	35%	249	101	41%	261	110	42%	-13%	18%
Morse	585	120	21%	607	115	19%	609	94	15%	548	115	21%	453	97	21%	-23%	-19%
Point Loma	377	112	30%	364	121	33%	396	118	30%	326	122	37%	309	116	38%	-18%	4%
San Diego	439	131	30%	423	136	32%	437	133	30%	382	151	40%	411	143	35%	-6%	9%
Scripps Ranch	437	133	30%	459	155	34%	453	125	28%	483	150	31%	483	143	30%	11%	8%
SDC&PA	177	32	18%	170	22	13%	163	46	28%	179	31	17%	174	40	23%	-2%	25%
Serra	352	109	31%	340	94	28%	319	80	25%	329	107	33%	360	131	36%	2%	20%
University City	319	101	32%	410	126	31%	407	114	28%	395	145	37%	387	124	32%	21%	23%
<b>Total</b>	<b>6,016</b>	<b>1,787</b>	<b>30%</b>	<b>5,999</b>	<b>1,827</b>	<b>30%</b>	<b>6,144</b>	<b>1,772</b>	<b>29%</b>	<b>5,794</b>	<b>1,943</b>	<b>34%</b>	<b>5,746</b>	<b>2,002</b>	<b>35%</b>	<b>-4%</b>	<b>12%</b>

Data Sources: High School Graduate Data- California Department of Education (CDE) and Enrollment Data- SDCCD Information Systems

Note. The CDE did not provide Garfield graduate counts for 2004 and 2007. The 2004 Garfield graduate count was estimated by taking the mean of the Garfield graduate counts for 2003-2007, and the 2007 graduate count was provided by the Garfield High School Registrar's Office.

Table 8  
SDCCD Enrollees - Direct Entry (Non-District Feeders)

	FALL 03			FALL 04			FALL 05			FALL 06			FALL 07			2003 to 2007 % Change	
	HS Grads	Direct Entrants N	Direct Entry %	HS Grads	Direct Entrants N	Direct Entry %	HS Grads	Direct Entrants N	Direct Entry %	HS Grads	Direct Entrants N	Direct Entry %	HS Grads	Direct Entrants N	Direct Entry %	HS Grads	Direct Entrants N
Abraxas	66	7	11%	97	5	5%	97	18	19%	77	6	8%	139	12	9%	111%	71%
Bonita	615	22	4%	632	39	6%	598	40	7%	610	64	10%	544	63	12%	-12%	186%
Castle Park	414	18	4%	384	25	7%	411	24	6%	394	49	12%	377	53	14%	-9%	194%
Chula Vista	556	51	9%	519	59	11%	483	55	11%	462	79	17%	522	79	15%	-6%	55%
Coronado	212	41	19%	244	40	16%	217	41	19%	218	41	19%	247	50	20%	17%	22%
El Cajon Valley	302	8	3%	312	13	4%	365	13	4%	334	13	4%	302	18	6%	0%	125%
El Capitan	385	8	2%	394	7	2%	338	6	2%	367	22	6%	347	17	5%	-10%	113%
Escondido	368	11	3%	396	18	5%	405	7	2%	474	15	3%	450	21	5%	22%	91%
Granite Hills	614	19	3%	458	19	4%	521	29	6%	567	41	7%	546	34	6%	-11%	79%
Grossmont	413	13	3%	428	23	5%	459	13	3%	401	27	7%	467	27	6%	13%	108%
Helix	415	33	8%	444	47	11%	412	36	9%	413	45	11%	460	63	14%	11%	91%
Hilltop	470	25	5%	479	14	3%	501	25	5%	431	37	9%	462	52	11%	-2%	108%
Mar Vista	473	44	9%	489	47	10%	491	40	8%	421	36	9%	404	51	13%	-15%	16%
Monte Vista	399	17	4%	340	15	4%	383	20	5%	333	22	7%	343	28	8%	-14%	65%
Montgomery	542	32	6%	532	45	8%	611	69	11%	402	52	13%	400	64	16%	-26%	100%
Mount Miguel	407	31	8%	272	25	9%	337	20	6%	326	26	8%	307	31	10%	-25%	0%
Mt. Carmel	779	213	27%	788	190	24%	524	108	21%	429	93	22%	537	138	26%	-31%	-35%
Poway	639	71	11%	654	72	11%	628	62	10%	636	74	12%	666	73	11%	4%	3%
Ramona	375	15	4%	436	22	5%	423	21	5%	375	11	3%	366	16	4%	-2%	7%
Rancho Bernardo	701	89	13%	749	95	13%	671	74	11%	690	65	9%	646	86	13%	-8%	-3%
Santana	373	10	3%	366	8	2%	337	10	3%	297	10	3%	340	16	5%	-9%	60%
Southwest	470	31	7%	474	33	7%	500	44	9%	342	42	12%	383	39	10%	-19%	26%
Sweetwater	648	57	9%	604	45	7%	567	49	9%	502	63	13%	559	87	16%	-14%	53%
Torrey Pines	675	23	3%	749	17	2%	772	30	4%	784	36	5%	883	41	5%	31%	78%
Valhalla	564	16	3%	326	18	6%	397	26	7%	356	24	7%	397	17	4%	-30%	6%
West Hills	478	14	3%	481	22	5%	478	28	6%	446	27	6%	505	32	6%	6%	129%
Westview	-	-	-	-	-	-	356	39	11%	526	86	16%	534	96	18%	-	-
<b>Total</b>	<b>12,353</b>	<b>919</b>	<b>7%</b>	<b>12,047</b>	<b>963</b>	<b>8%</b>	<b>12,282</b>	<b>947</b>	<b>8%</b>	<b>11,613</b>	<b>1,106</b>	<b>10%</b>	<b>12,133</b>	<b>1,304</b>	<b>11%</b>	<b>-2%</b>	<b>42%</b>

Data Sources: High School Graduate Data- California Department of Education (CDE) and Enrollment Data- SDCCD Information Systems  
 Note: Data are unavailable for the following high schools: Horizon, Marian Catholic, Our Lady of Peace, St. Augustine, and USD.



Table 9  
SDCCCD Enrollees - Direct and Delayed Entry (District Feeders)

SDCCCD Term	FALL 03		FALL 04		FALL 05		FALL 06		FALL 07	
Graduation Year	# of Grads	Percent	# of Grads	Percent	# of Grads	Percent	# of Grads	Percent	# of Grads	Percent
2000	16	1%								
2001	28	1%	7	1%						
2002	49	3%	23	1%	5	0%				
2003	<b>1,787</b>	95%	63	3%	15	1%	6	0%		
2004			<b>1,827</b>	95%	54	3%	19	1%	4	0%
2005					<b>1,772</b>	96%	62	3%	32	2%
2006							<b>1,943</b>	96%	64	3%
2007									<b>2,002</b>	95%
<b>TOTAL</b>	<b>1,880</b>	<b>100%</b>	<b>1,920</b>	<b>100%</b>	<b>1,846</b>	<b>100%</b>	<b>2,030</b>	<b>100%</b>	<b>2,102</b>	<b>100%</b>

Data Source. SDCCCD Information Systems

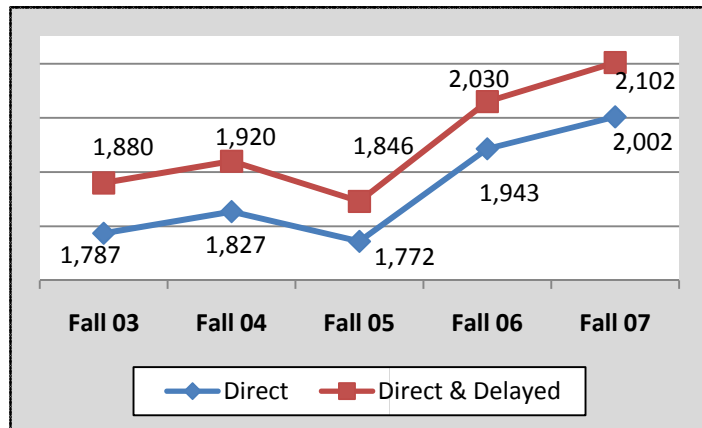


Figure 2. SDCCCD enrollees – 5-years of direct and delayed (District Feeders).

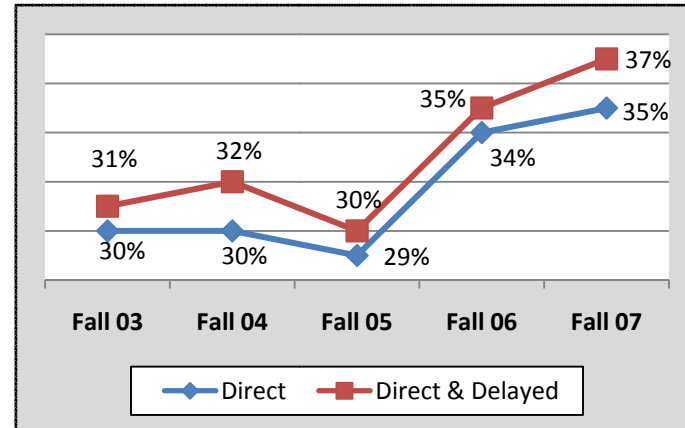


Figure 3. SDCCCD percent capture rate – 5-years of direct and delayed (District Feeders).

Data Source for Figures 2 and 3. SDCCCD Information Systems

Table 10  
SDCCCD Enrollees - Direct and Delayed Entry (Non-District Feeders)

SDCCCD Term	FALL 03		FALL 04		FALL 05		FALL 06		FALL 07	
Graduation Year	# of Grads	Percent	# of Grads	Percent	# of Grads	Percent	# of Grads	Percent	# of Grads	Percent
2000	12	1%								
2001	21	2%	21	2%						
2002	54	5%	27	3%	13	1%				
2003	<b>919</b>	91%	56	5%	30	3%	11	1%		
2004			<b>963</b>	90%	53	5%	39	3%	7	1%
2005					<b>947</b>	91%	75	6%	18	1%
2006							<b>1,106</b>	90%	67	5%
2007									<b>1,304</b>	93%
<b>TOTAL</b>	<b>1,006</b>	<b>100%</b>	<b>1,067</b>	<b>100%</b>	<b>1,043</b>	<b>100%</b>	<b>1,231</b>	<b>100%</b>	<b>1,396</b>	<b>100%</b>

Data Source. SDCCCD Information Systems

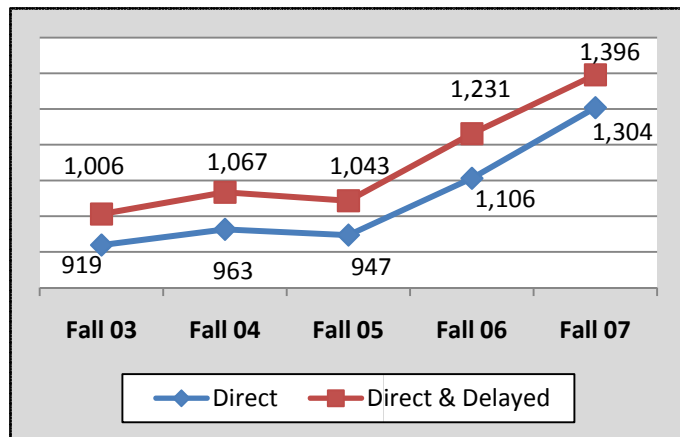


Figure 4. SDCCCD enrollees – 5-years of direct and delayed (Non-District Feeders).

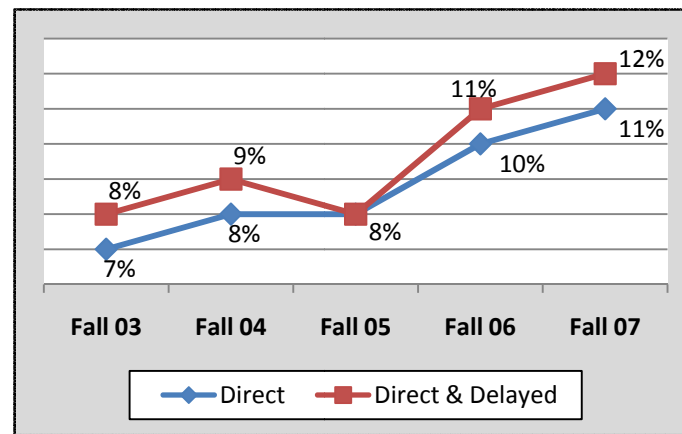


Figure 5. SDCCCD percent capture rate – 5-years of direct and delayed (Non-District Feeders).

Data Source for Figures 4 and 5. SDCCCD Information Systems

## Section 2.2 Demographic Characteristics of Entering High School Graduates

This section provides data on the demographic characteristics of the high school graduates who enrolled in the district in fall 2007. Data reflect combined direct and delayed entry district feeder high school students only.

### GENDER:

- Of the combined direct and delayed entry district feeder high school graduates enrolled at SDCCD in fall 2007, 54% were female and 46% male (see Table 11).

### RACE/ETHNICITY:

- The racial/ethnic composition of the fall 2007 SDCCD cohort of combined direct and delayed entry district feeder high school graduates was: 34% Latino, 20% white, 17% Asian / Pacific Islander, 11% African American, 9% Filipino, and 1% American Indian. For the remainder, 2% were reported as other and 6% were unreported (see Table 11 and Figure 6). The racial/ethnic composition of the 2007 high school senior class was: 34% Latino, 30% white, 14% African American, 13% Asian / Pacific Islander, 9% Filipino, and <1% American Indian (see Table 3). A comparison of the two populations suggests that Latinos, Filipinos, and American Indians are proportionately represented, whites and African Americans are under-represented, and Asians are slightly over-represented at SDCCD. (Please note that the former population comprises both direct and delayed entry students, which include the Classes of 2004 through 2007, whereas the senior class portrait examines only the Class of 2007. The two populations are comparable as only 5% of the former population consists of delayed entry students from the Classes of 2004 through 2006.)
- The percent of Latino students increased steadily over the five fall terms, from 27% in 2003 to 34% in 2007 (see Table 11).

### FIRST GENERATION COLLEGE STUDENT:

- In 2007, 35% of the combined direct and delayed district feeder high school graduates were first generation college students (see Table 11).
- The percent of first generation college students increased slightly and steadily over the five-year period from 29% in 2003 to 35% in 2007 (see Table 11).

Table 11  
*Race/Ethnicity of SDCCD Direct and Delayed Entry High School Graduates (District Feeders)*

	FALL 03	FALL 04	FALL 05	FALL 06	FALL 07
<b>Total N of Students</b>	<b>1,880</b>	<b>1,920</b>	<b>1,846</b>	<b>2,030</b>	<b>2,102</b>
<b>GENDER</b>					
Female	52%	52%	52%	53%	54%
Male	48%	48%	48%	47%	46%
Unreported	<1%	<1%	<1%	0%	0%
<b>ETHNICITY</b>					
American Indian	1%	1%	1%	1%	1%
African American	9%	10%	10%	11%	11%
Asian / Pacific Islander	18%	18%	18%	17%	17%
Filipino	11%	11%	11%	9%	9%
Latino	27%	29%	29%	32%	34%
White	23%	22%	23%	21%	20%
Other	6%	3%	3%	3%	2%
Unreported	5%	6%	5%	6%	6%
<b>FIRST GENERATION</b>					
Not first generation	71%	69%	69%	67%	65%
First generation	29%	31%	31%	33%	35%

Data Source. SDCCD Information Systems

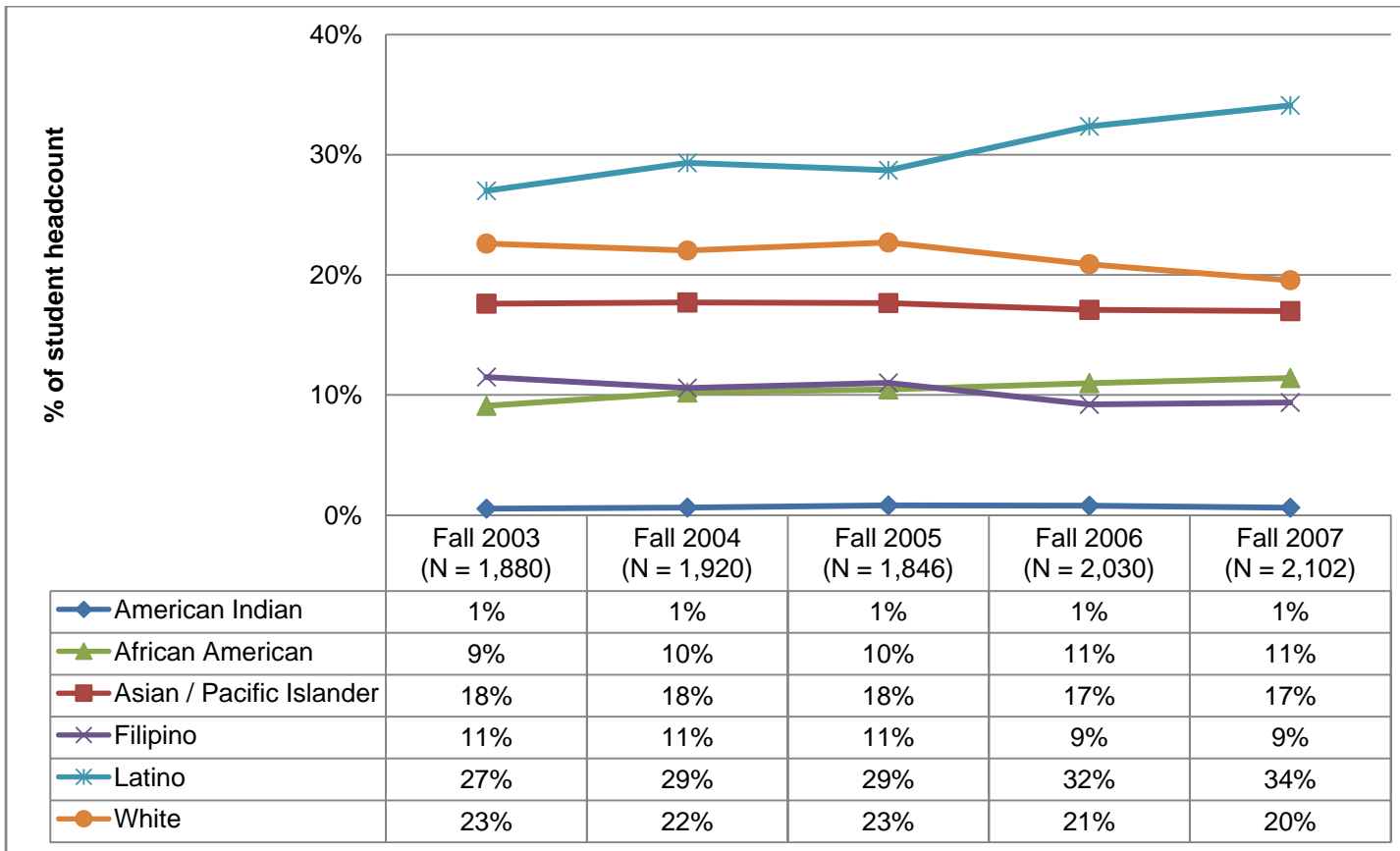


Figure 6. Race/ethnicity of SDCCCD direct and delayed entry high school graduates (District Feeders).

Data Source. SDCCCD Information Systems

Note. Although excluded from the figure above, “Other” and “Unreported” ethnic groups are included in the total denominator.

## Chapter 3: College Placement

The assessment tests used in the district help determine which levels of English and math courses would offer students the greatest opportunities for learning, academic challenge, and success. Students are encouraged to take the assessment tests as they matriculate in the college. For the high school graduates who took an assessment test prior to their fall enrollment in the district, this section summarizes what levels of courses these students qualified to enroll in (i.e., transfer level, associate degree-level, basic skills) for reading, writing, and math courses. Although students can also obtain a placement level by successful completion of prerequisite courses, the data in this section reflect only students who qualified for a particular placement level based on the assessment test score. Course sequences in relation to placement scores are displayed for English in Figure 7 and math in Figure 8.

The data described in Sections 3.1 through 3.4 reflect combined direct and delayed entry district feeder high school graduates enrolled at SDCCD in fall 2007. Data are provided for district feeder high schools only since the majority of non-district feeder high school students did not take placement tests during most terms.

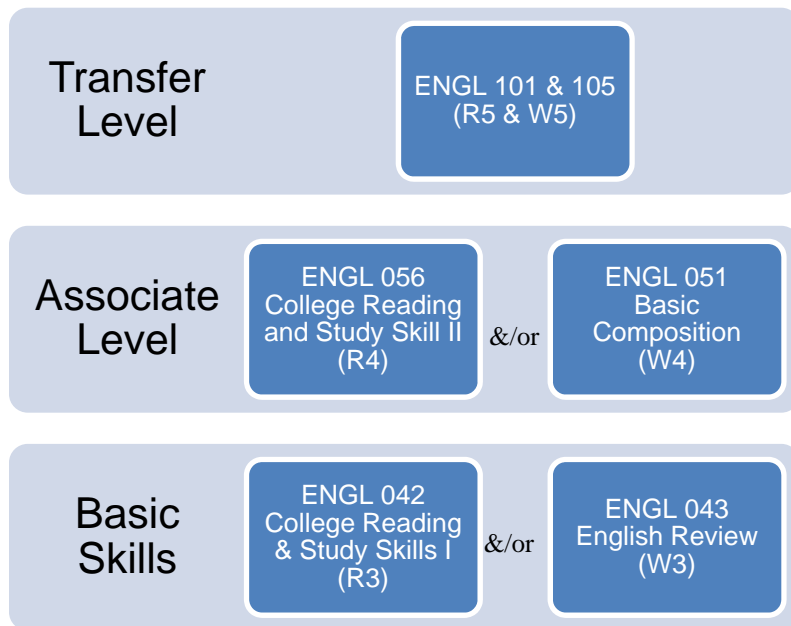


Figure 7. English course sequence relative to placement.

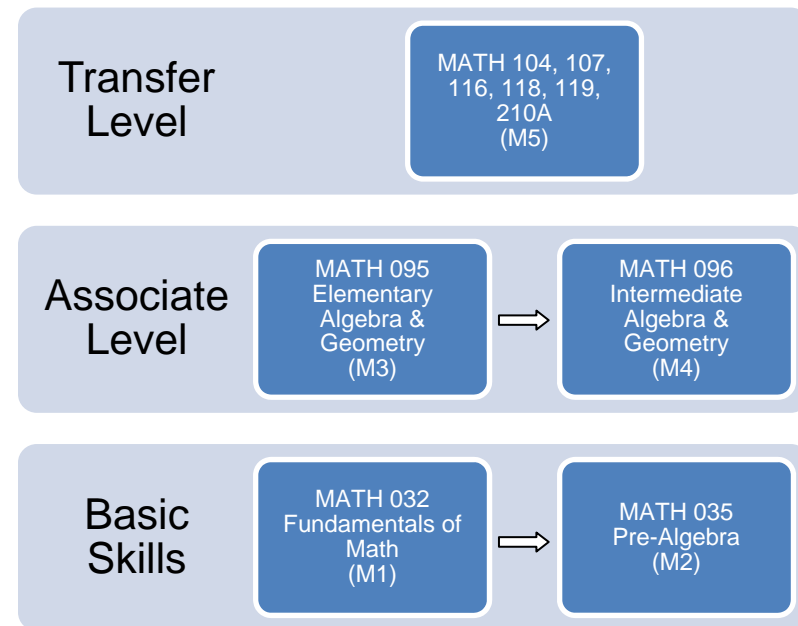


Figure 8. Math course sequence relative to placement.

### Section 3.1 Reading Placement Outcomes

- In fall 2007, of the combined direct and delayed entry students from district feeder high schools, approximately one-third did not take a placement test, 9% “Need Advising” which means that their test scores were very low and warranted a meeting with a counselor, 10% placed at Basic Skills (up from 4% in 2003), 19% placed at the Associate degree-level (up from 15% in 2003), and 30% placed at the Transfer level (down from 52% in 2003).
- Transfer level placements exhibited a dramatic decline from fall 2003 to fall 2005 and then leveled off.
- The percentage of Associate degree-level placements varied within the range of 14% and 19% over the five-year period of 2003 to 2007.
- Although Basic Skills constitutes the smallest proportion of the three course placement levels, it has seen the most growth in terms of percent change over the five-year period of 2003 to 2007, increasing from 4% in 2003 to 10% in 2007. See Figure 9 for an illustration of the aforementioned points.

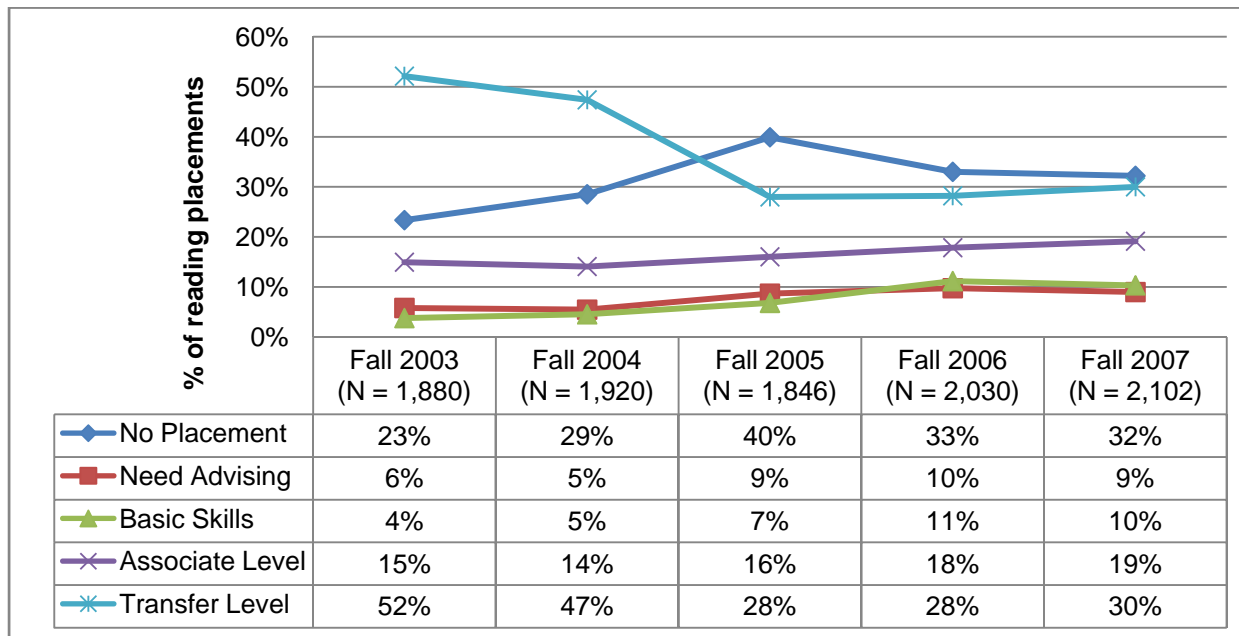


Figure 2. SDCCCD reading placement outcomes of combined direct and delayed entry students over a five-year period (District Feeders).  
 Data Source. SDCCCD Information Systems

### Section 3.2 Writing Placement Outcomes

- Writing placement scores exhibited the same general trends seen in the Reading placement scores (see Figures 9 and 10).
- In fall 2007, of the combined direct and delayed entry students from district feeder high schools, approximately one-third did not take a placement test, 9% “Needed Advising” which means that their test scores were very low and warranted a meeting with a counselor, 16% placed at Basic Skills (up from 11% in 2003), 27% placed at the Associate degree-level (up from 24% in 2003), and 16% placed at the Transfer level (down from 36% in 2003).
- Transfer level placements exhibited a dramatic decline and then leveled off during the five-year period of 2003 to 2007.
- The percentage of Associate degree-level placements varied slightly within the range of 23% and 27% over the five-year period of 2003 to 2007.
- Although Basic Skills constitutes the smallest proportion of the three course placement levels, it has seen the most growth in terms of percent change over the five-year period of 2003 to 2007, increasing from 11% in 2003 to 16% in 2007. See Figure 10 for an illustration of the aforementioned points.

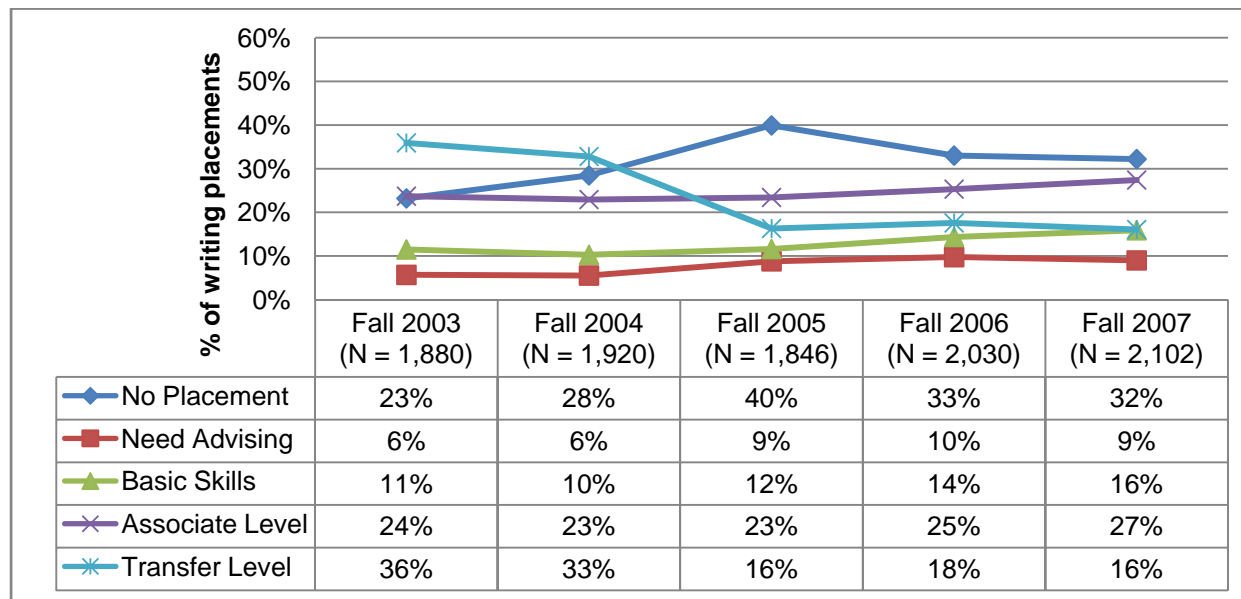


Figure 10. SDCCCD writing placement outcomes of combined direct and delayed entry students over a five-year period (District Feeders)  
 Data Source. SDCCCD Information Systems



### Section 3.3 Math Placement Outcomes

- In fall 2007, of the combined direct and delayed entry students from district feeder high schools, approximately one-third did not take a placement test, 2% needed to “Take Algebra Readiness Test”, 29% placed at Basic Skills, 24% placed at the Associate degree-level, and 13% placed at the Transfer level.
- Among the three placement levels, Transfer level placements consistently constituted the smallest proportion of placements during the five-year period of 2003 to 2007.
- The percentage of Associate degree-level placements varied within the range of 23% and 31% over the five-year period of 2003 to 2007.
- Over the five-year period of 2003 to 2007, Basic Skills grew to be the most prevalent of the math placement levels. See Figure 11 for an illustration of the aforementioned points.

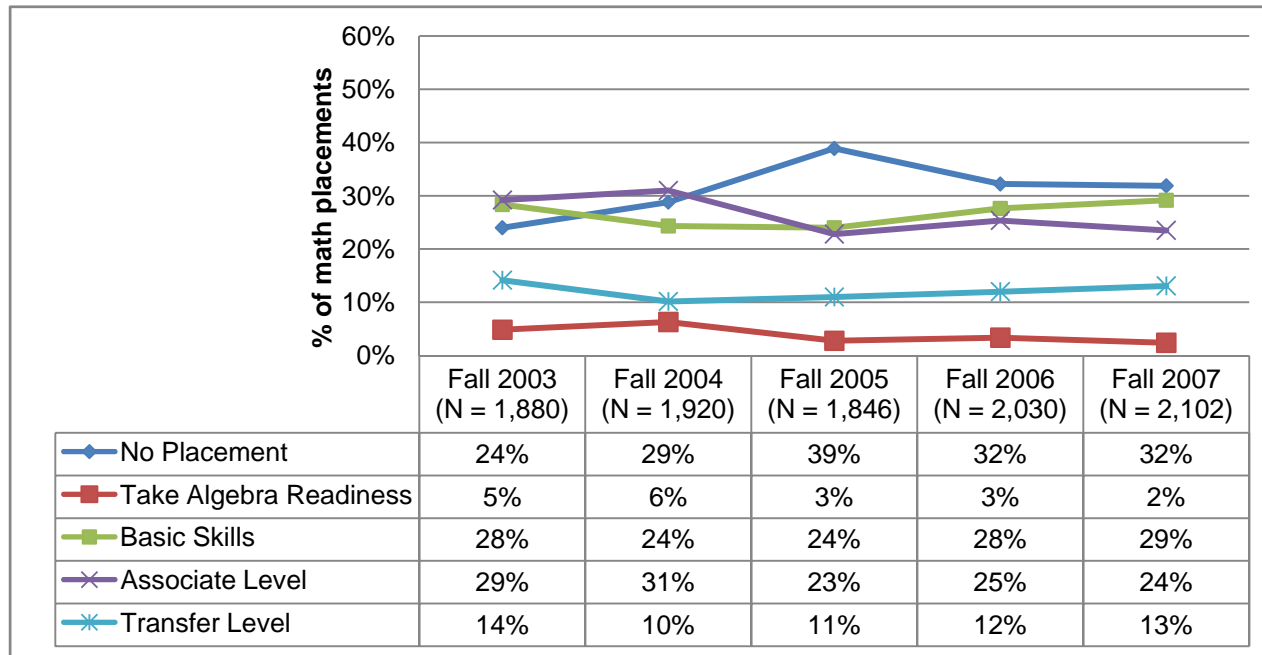


Figure 11. SDCCD math placement outcomes of combined direct and delayed entry students over a five-year period (District Feeders)  
 Data Source. SDCCD Information Systems

## Chapter 4: First-Semester Outcomes

Chapter 4 describes how first-time students from the district feeder high schools performed during their first academic term. This chapter is divided into five sections: Setting the Context, Average Unit Completion, Retention, Successful Course Completion, and Course Outcomes.

### Section 4.1 Setting the Context

Valid enrollments include all course enrollments in which the grade notation is A, B, C, D, F, CR (Credit Received), NC (No Credit Received), I (Incomplete), W (Withdrawal), or RD (Report Delayed). Valid enrollments for combined direct and delayed entry district feeder high school students disaggregated by race/ethnicity are shown in Table 12 for fall 2003 to 2007.

- For combined direct and delayed district feeder high school students in 2007, the valid enrollments by race/ethnicity mirror the racial/ethnic composition of the student population (note the similarities between Tables 11 and 12 as well as Figures 6 and 12).
- Enrollments by Latino students climbed from 26% in 2003 to 34% in 2007 (see Figure 12).

Table 12

*SDCCD Valid Enrollment by Race/Ethnicity – 5 Years of Combined Direct and Delayed Entry (District Feeders)*

Valid Enrollments	Fall 2003		Fall 2004		Fall 2005		Fall 2006		Fall 2007	
	N	%	N	%	N	%	N	%	N	%
American Indian	34	1%	48	1%	51	1%	60	1%	43	1%
African American	598	9%	750	12%	703	12%	771	12%	736	11%
Asian / Pacific Islander	1,165	18%	1,126	17%	1,031	17%	1,073	16%	1,102	17%
Filipino	748	11%	619	10%	665	11%	565	9%	585	9%
Latino	1,698	26%	1,889	29%	1,695	28%	2,068	32%	2,246	34%
White	1,517	23%	1,437	22%	1,395	23%	1,412	22%	1,384	21%
Other	406	6%	234	4%	228	4%	200	3%	142	2%
Unreported	366	6%	403	6%	278	5%	369	6%	423	6%
<b>Total</b>	<b>6,532</b>	<b>100%</b>	<b>6,506</b>	<b>100%</b>	<b>6,046</b>	<b>100%</b>	<b>6,518</b>	<b>100%</b>	<b>6,661</b>	<b>100%</b>

Data Source: SDCCD Information Systems

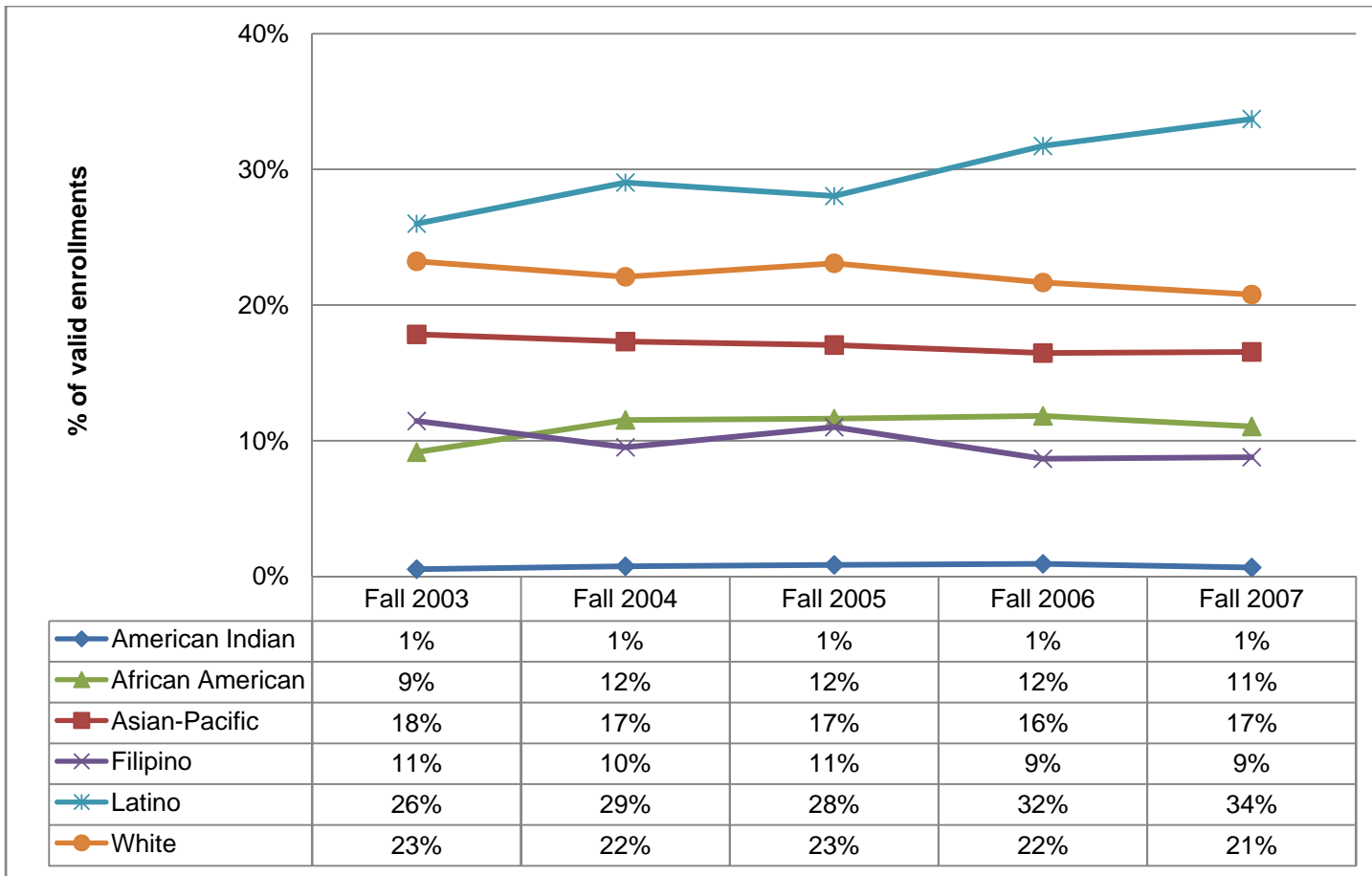


Figure 12. SDCCCD valid enrollment by race/ethnicity of combined direct and delayed entry students over a five-year period (District Feeders)

Data Source. SDCCCD Information Systems

Note. Although excluded from the figure above, “Other” and “Unreported” ethnic groups are included in the total denominator.

## Section 4.2 Average Unit Completion

Table 13 shows the average number of units completed by combined direct and delayed entry district feeder high school students enrolled at SDCCCD from fall 2003 to fall 2007.

Table 13

*SDCCCD Units Completed by Race/Ethnicity – 5 Years of Combined Direct and Delayed Entry (District Feeders)*

Average Unit Completion	Fall 2003	Fall 2004	Fall 2005	Fall 2006	Fall 2007
American Indian	5.8	6.8	6.9	7.9	5.9
African American	6.8	7.6	6.5	6.2	6.2
Asian / Pacific Islander	7.6	7.9	7.4	7.1	7.9
Filipino	8.6	7.3	7.8	7.3	6.9
Latino	6.9	7.4	7.3	6.5	7.3
White	7.7	7.9	7.2	6.8	7.9
Other	7.8	7.5	7.9	6.9	8.6
Unreported	7.9	8.6	6.8	6.8	7.0
<b>Overall Average</b>	<b>7.5</b>	<b>7.7</b>	<b>7.3</b>	<b>6.7</b>	<b>7.3</b>

Data Source. SDCCCD Information Systems

## Section 4.3 Retention

Table 14 shows retention rates disaggregated by entry (direct v. delayed) for district high school feeders, while Figure 13 displays retention rates for combined direct and delayed entry district feeder high schools disaggregated by race/ethnicity. Both Table 14 and Figure 13 take a longitudinal look at the five-year period of fall 2003 to fall 2007.

Retention rates were calculated by dividing the numerator comprising grade notations of A, B, C, D, F, CR, NC, I, RD by the denominator comprising grade notations of A, B, C, D, F, CR, NC, I, RD, and W.

- The overall retention rate for combined direct and delayed entry district feeder high school students increased slightly and then remained steady: 83% in fall 2003, 85% in fall 2004, and 86% from fall 2005 through fall 2007.
- The retention rates for delayed entry students were consistently lower than those for students who entered SDCCD directly following high school graduation.
- The retention rates for the high school feeder students were slightly higher than those for the overall SDCCD general population.

Table 14  
SDCCD Retention Rates – 5 Years of Direct and Delayed Entry (District Feeders)

Retention Rate	Fall 2003	Fall 2004	Fall 2005	Fall 2006	Fall 2007
Direct Only	84%	86%	86%	86%	86%
Delayed Only	78%	75%	75%	79%	80%
Direct & Delayed Total	83%	85%	86%	86%	86%
Overall SDCCD	81%	82%	82%	82%	81%

Data Source. SDCCD Information Systems

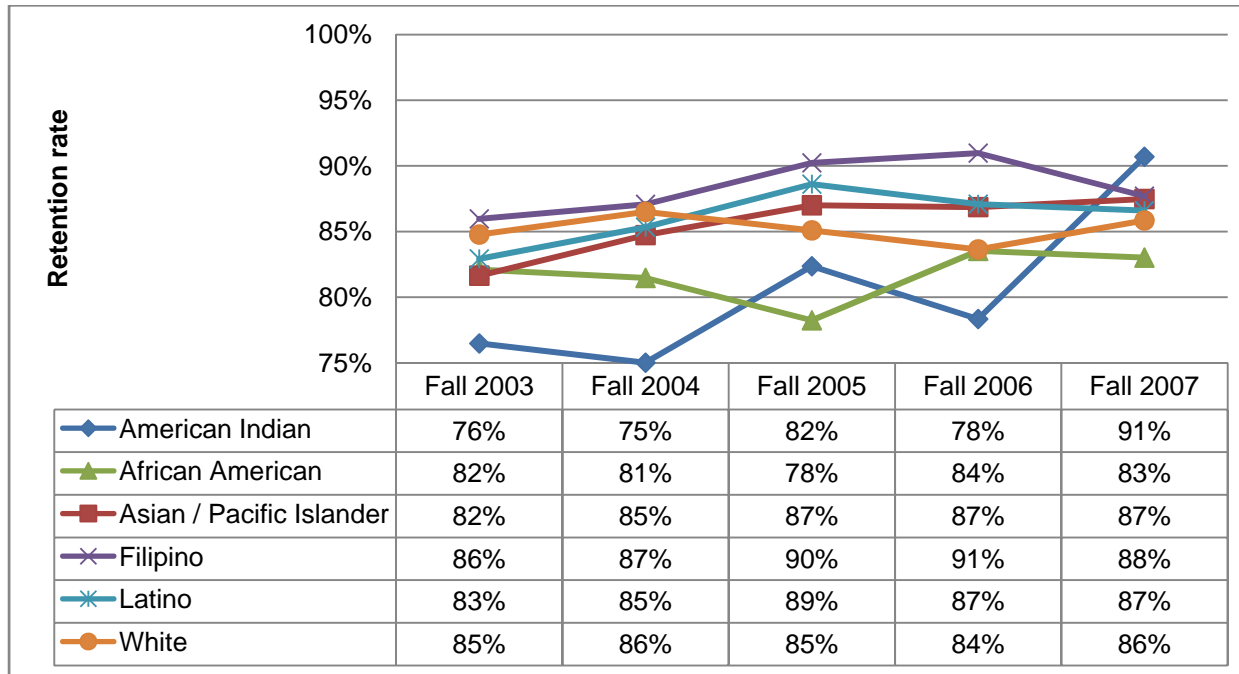


Figure13. SDCCD retention rates by race/ethnicity for combined direct and delayed entry students over a five-year period (District Feeders)

Data Source. SDCCD Information Systems

Note. Percents for American Indians should be regarded with caution due to their relatively small numbers.

## Section 4.4 Successful Course Completion

Table 15 shows successful course completion rates disaggregated by entry (direct v. delayed) for district high school feeders, while Figure 14 displays successful course completion rates for combined direct and delayed entry district feeder high schools disaggregated by race/ethnicity. Both Table 15 and Figure 14 take a longitudinal look at the five-year period of fall 2003 to fall 2007.

Successful course completion rates were calculated by dividing the numerator comprising grade notations of A, B, C, CR by the denominator comprising grade notations of A, B, C, D, F, CR, NC, I, W, and RD.

- The overall successful course completion rates for combined direct and delayed entry district feeder high school students were fairly stable over the five-year period, remaining within the range of 58% to 61%.
- The successful course completion rates for delayed entry students were consistently lower than those for students who entered SDCCD directly following high school graduation.
- The successful course completion rates for the high school feeder students were slightly lower than those for the overall SDCCD general population.

Table 15  
SDCCCD Successful Completion Rates – 5 Years of Direct and Delayed Entry (District Feeders)

Success Rate	Fall 2003	Fall 2004	Fall 2005	Fall 2006	Fall 2007
Direct Only	60%	60%	59%	59%	61%
Delayed Only	56%	47%	44%	46%	55%
Direct & Delayed	60%	59%	58%	59%	61%
Overall SDCCCD	65%	65%	64%	65%	64%

Data Source. SDCCCD Information Systems

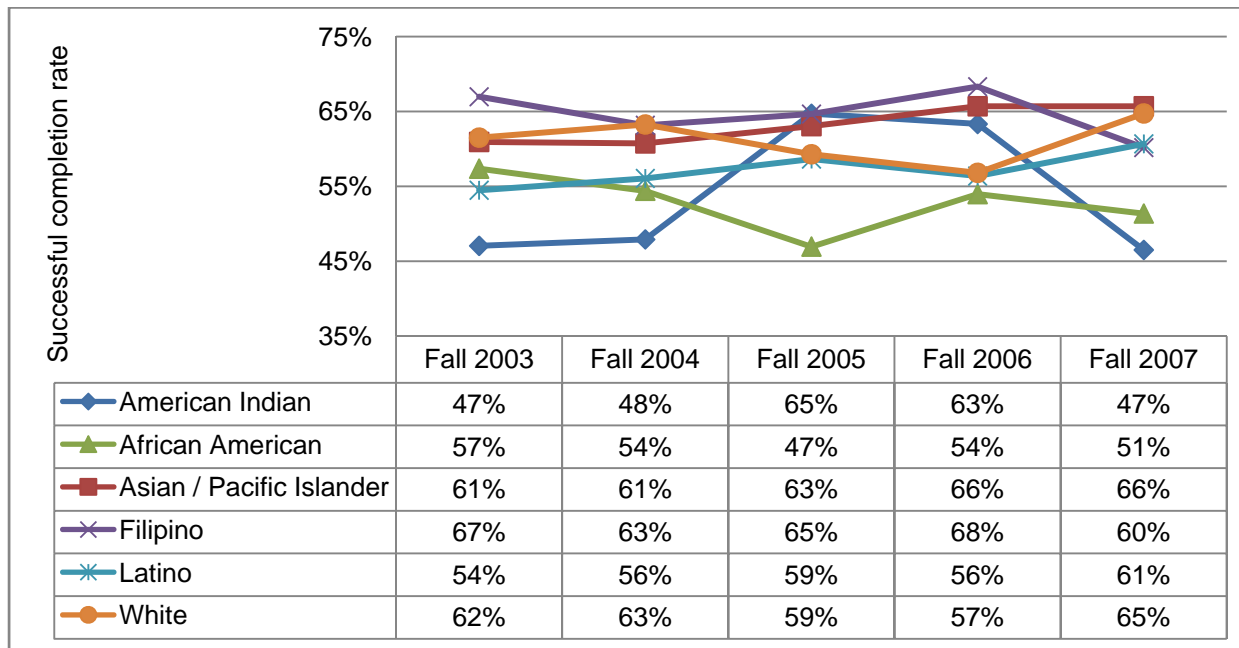


Figure 14. SDCCCD successful completion rates by race/ethnicity for combined direct and delayed entry students over a five-year period (District Feeders)

Data Source. SDCCCD Information Systems

Note. Percents for American Indians should be regarded with caution due to their relatively small numbers.



## Section 4.5 Course Outcomes

Table 16 shows the grade distributions for combined direct and delayed entry district high school feeder students disaggregated by race/ethnicity for the most recent five fall terms, 2003 to 2007.

Table 17 shows term grade point averages (term GPAs) disaggregated by entry (direct v. delayed) for district high school feeders, while Figure 15 displays term GPAs for combined direct and delayed entry district feeder high schools disaggregated by race/ethnicity. Both Table 17 and Figure 15 take a longitudinal look at the five-year period of fall 2003 to fall 2007.

- Over the five-year period, the overall term GPA of direct and delayed students fell from 2.30 in fall 2003 to 2.21 in fall 2004, further down to 2.16 in fall 2005, and then rose back up to 2.21 in fall 2006 and increased to 2.34 in fall 2007.
- The average term GPAs for delayed entry students were consistently lower than those for students who entered SDCCD directly following high school graduation.
- The average term GPAs for the high school feeder students were lower than those for the overall SDCCD general population.

Table 16  
SDCCD Grade Distribution – 5 Years of Combined Direct and Delayed Entry (District Feeders)

Fall 2007	A	B	C	CR	D	F	I	I*	NC	RD	W	Total
American Indian	14%	14%	14%	5%	12%	26%	--	--	7%	--	9%	43
African American	11%	16%	17%	7%	11%	15%	1%	--	5%	<1%	17%	736
Asian-Pacific	22%	20%	16%	8%	7%	8%	<1%	--	6%	1%	13%	1102
Filipino	15%	21%	14%	11%	9%	11%	1%	--	6%	1%	12%	585
Latino	20%	19%	17%	5%	8%	13%	<1%	--	5%	<1%	13%	2246
White	23%	21%	16%	5%	6%	12%	1%	--	3%	<1%	14%	1384
Other	13%	24%	24%	5%	4%	11%	2%	--	5%	1%	11%	142
Decline	15%	17%	19%	5%	8%	14%	1%	--	2%	<1%	18%	423
<b>Total</b>	<b>1,257</b>	<b>1,297</b>	<b>1,099</b>	<b>414</b>	<b>507</b>	<b>799</b>	<b>34</b>	<b>--</b>	<b>301</b>	<b>24</b>	<b>929</b>	<b>6,661</b>

Data Source. SDCCD Information Systems

Note. Percents for American Indians should be regarded with caution due to their relatively small numbers.

Table 16 (cont'd)  
 SDCCD Grade Distribution – 5 Years of Combined Direct and Delayed Entry (District Feeders)

Fall 2006	A	B	C	CR	D	F	I	I*	NC	RD	W	Total
American Indian	23%	20%	15%	5%	3%	10%	--	--	2%	--	22%	60
African American	14%	16%	18%	6%	7%	17%	<1%	--	4%	1%	16%	771
Asian-Pacific	18%	21%	18%	8%	6%	11%	<1%	--	4%	1%	13%	1,073
Filipino	20%	22%	18%	8%	7%	10%	<1%	--	5%	1%	9%	565
Latino	15%	16%	19%	6%	10%	16%	<1%	--	4%	1%	13%	2,068
White	19%	19%	15%	4%	8%	15%	1%	--	2%	1%	16%	1,412
Other	17%	19%	13%	5%	11%	15%	--	--	3%	2%	18%	200
Decline	13%	20%	21%	5%	6%	11%	1%	--	5%	1%	16%	369
<b>Total</b>	<b>1,084</b>	<b>1,202</b>	<b>1,157</b>	<b>396</b>	<b>506</b>	<b>930</b>	<b>25</b>	<b>--</b>	<b>238</b>	<b>55</b>	<b>925</b>	<b>6,518</b>

Fall 2005	A	B	C	CR	D	F	I	I*	NC	RD	W	Total
American Indian	25%	20%	14%	6%	2%	14%	--	--	2%	--	18%	51
African American	12%	14%	18%	3%	11%	19%	<1%	--	1%	<1%	22%	703
Asian-Pacific	17%	20%	20%	5%	7%	13%	<1%	--	3%	--	13%	1,031
Filipino	17%	22%	20%	6%	8%	12%	<1%	--	5%	--	10%	665
Latino	17%	20%	18%	4%	9%	18%	<1%	--	3%	<1%	11%	1,695
White	17%	22%	17%	3%	7%	15%	1%	--	3%	<1%	15%	1,395
Other	13%	16%	23%	3%	7%	17%	<1%	--	4%	<1%	16%	228
Decline	16%	19%	14%	3%	10%	13%	<1%	--	6%	<1%	17%	278
<b>Total</b>	<b>985</b>	<b>1,191</b>	<b>1,110</b>	<b>250</b>	<b>500</b>	<b>943</b>	<b>25</b>	<b>--</b>	<b>188</b>	<b>7</b>	<b>847</b>	<b>6,046</b>

Data Source. SDCCD Information Systems

Note. Percents for American Indians should be regarded with caution due to their relatively small numbers.

Table 16 (cont'd)  
 SDCCD Grade Distribution – 5 Years of Combined Direct and Delayed Entry (District Feeders)

Fall 2004	A	B	C	CR	D	F	I	I*	NC	RD	W	Total
American Indian	17%	19%	13%	--	4%	19%	--	--	--	4%	25%	48
African American	17%	14%	20%	3%	6%	18%	1%	--	1%	1%	19%	750
Asian-Pacific	17%	20%	18%	5%	6%	15%	<1%	--	1%	<1%	15%	1,126
Filipino	15%	19%	19%	9%	6%	15%	1%	--	2%	1%	13%	619
Latino	14%	21%	17%	4%	9%	16%	1%	--	2%	1%	15%	1,889
White	19%	23%	18%	3%	8%	13%	1%	--	2%	1%	14%	1,437
Other	19%	17%	17%	4%	9%	14%	<1%	--	2%	<1%	18%	234
Decline	21%	20%	18%	3%	8%	13%	1%	--	2%	1%	13%	403
<b>Total</b>	<b>1,102</b>	<b>1,302</b>	<b>1,181</b>	<b>270</b>	<b>497</b>	<b>982</b>	<b>47</b>	<b>--</b>	<b>102</b>	<b>56</b>	<b>967</b>	<b>6,506</b>

Fall 2003	A	B	C	CR	D	F	I	I*	NC	RD	W	Total
American Indian	21%	3%	24%	--	12%	15%	--	--	3%	--	24%	34
African American	19%	18%	19%	2%	7%	15%	1%	--	1%	1%	18%	598
Asian-Pacific	22%	19%	16%	3%	7%	12%	<1%	--	1%	1%	18%	1,165
Filipino	17%	23%	24%	3%	7%	9%	1%	--	<1%	2%	14%	748
Latino	16%	20%	17%	2%	9%	17%	1%	<1%	1%	1%	17%	1,698
White	21%	22%	17%	2%	7%	14%	<1%	<1%	<1%	1%	15%	1,517
Other	19%	17%	19%	4%	9%	13%	1%	--	2%	1%	16%	406
Decline	24%	17%	18%	2%	9%	11%	<1%	--	1%	1%	17%	366
<b>Total</b>	<b>1,255</b>	<b>1,306</b>	<b>1,175</b>	<b>155</b>	<b>525</b>	<b>885</b>	<b>38</b>	<b>2</b>	<b>46</b>	<b>65</b>	<b>1,080</b>	<b>6,532</b>

Data Source. SDCCD Information Systems

Note. Percents for American Indians should be regarded with caution due to their relatively small numbers.

Table 17  
SDCCCD Mean Term GPA – 5 Years of Direct and Delayed Entry (District Feeders)

Mean Term GPA	Fall 2003	Fall 2004	Fall 2005	Fall 2006	Fall 2007
Direct Entry	2.30	2.22	2.17	2.22	2.35
Delayed Entry	2.27	1.96	1.93	1.89	2.15
Direct & Delayed Total	2.30	2.21	2.16	2.21	2.34
Overall SDCCCD	2.75	2.72	2.71	2.72	2.74

Data Source: SDCCCD Information Systems

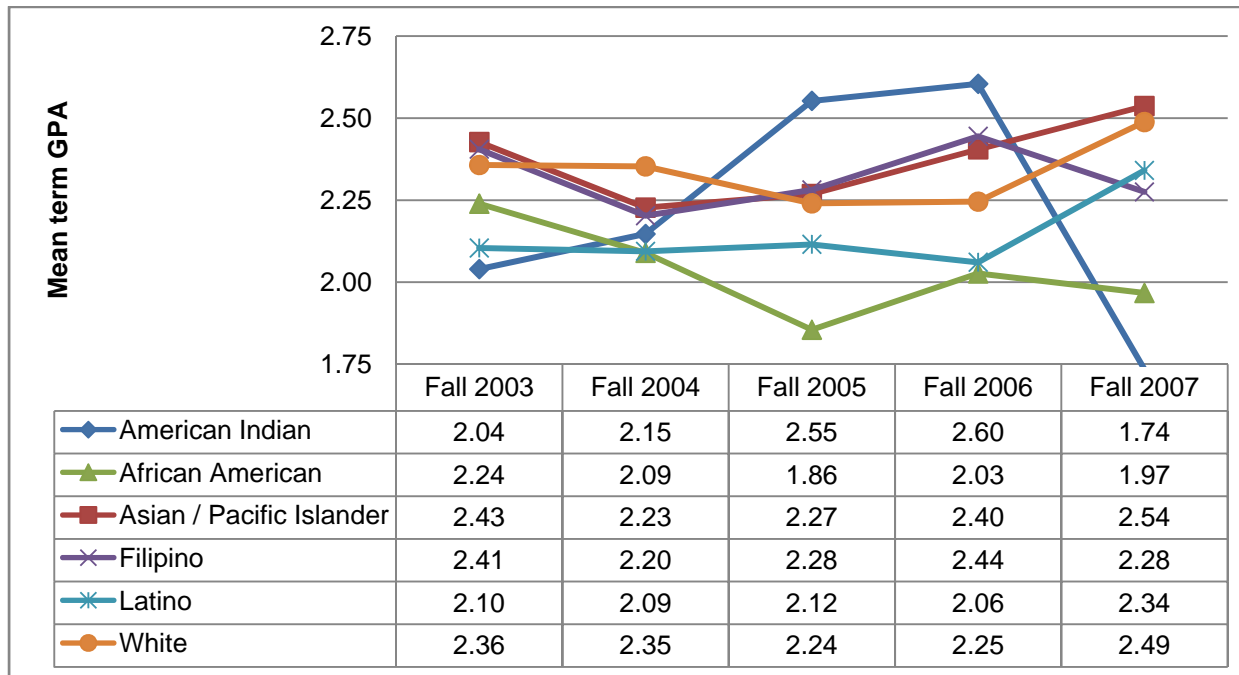


Figure 3. SDCCCD mean term GPA by race/ethnicity for combined direct and delayed entry students over a five-year period (District Feeders)

Data Source: SDCCCD Information Systems

Note: Percents for American Indians should be regarded with caution due to their relatively small numbers.

## Chapter 5: Conclusion

The concluding chapter offers a narrative summary of the major findings in the High School to Community College Pipeline Report. The report closes with a list of questions for consideration and reflection.

### Section 5.1 Summary of Findings

In 2007, 86% of district feeder high school seniors graduated, while 29% completed their A – G requirements. Although the number of high school graduates decreased by 4% over the past five years, the number of these graduates directly entering SDCCD has increased by 12%. Approximately one-third of the high school graduating Class of 2007 directly entered the San Diego Community College District in fall 2007.

In comparison with the racial/ethnic composition of the high school Class of 2007, the demographic profile of the fall 2007 SDCCD cohort of combined direct and delayed entry district feeder high school graduates indicates that whites and African Americans are under-represented, Asians are slightly over-represented, and Latinos, Filipinos, and American Indians are proportionately represented.

For reading and writing placement outcomes, Transfer level placements exhibited a dramatic decline from 2003 to 2005 and then leveled off, while Associate degree-level placements showed little variation over the five-year period. Although Basic Skills constituted the smallest proportion of placements, it has seen the most growth in terms of percent change over the past five years. In math, Transfer level placements consistently constituted the smallest proportion of placements from 2003 through 2007. Associate degree-level placements varied within the range of 23% and 31% over the five-year period, while Basic Skills grew to be the most prevalent of the math placement outcomes.

From 2003 through 2007, when the rates for the overall SDCCD population are set as the benchmark, the combined direct and delayed entry district feeder high school students showed higher retention rates and lower successful course completion rates and term GPAs. All outcomes were lower for delayed entry district feeder high school students, suggesting that high school graduates who put off college for one to three years experience less success than those students who enter college directly after high school graduation.

## Section 5.2 Reflective Questions for Further Inquiry

Please consider the following questions as you reflect on the information presented in this report.

- What major trends emerged over the past five fall terms?
- Where, if anywhere, are there performance gaps?
- What are the conditions surrounding these trends and/or gaps?
- What specific actions can we take to enhance conditions for students in order to achieve equity?
- What will YOU do to help students from area high schools achieve equitable outcomes?